

## Glebe Society 50<sup>th</sup> Annual General Meeting

The 50<sup>th</sup> AGM of the Glebe Society was held on the afternoon of Sunday 25 August at the Glebe Town Hall.

This was a landmark AGM, being the 50<sup>th</sup> since the Society was founded in 1969. It was wonderful to see so many people in attendance (around 80), with a good number of new members. Outgoing Glebe Society President Verity Firth invited new members to stand up and introduce themselves and they were made welcome by existing members.

### Election of Management Committee

The following office-bearers were elected:

President:	Brian Fuller
Vice President:	Mark Stapleton
Secretary:	Jude Paul
Treasurer:	Jane Gatwood
Ordinary	Dorothy Davis
Members:	Michael Morrison
	Ted McKeown
	Robert Hannan

Verity explained that the Management Committee has decided to experiment with having four presidents over the year in order to share the onerous tasks associated with the role and to prepare younger and less experienced members for the role. After Brian Fuller's three-month term as President, the role will be taken over by Virginia Simpson-Young, followed by Janet Walquist and then Mark Stapleton.

All Convenors of Subcommittees are automatically members of the Management Committee; these people are listed on the back of the *Bulletin*.

### New constitution adopted

A new constitution was put to the meeting for approval. All members will have received a copy of the draft constitution as well as an explanation for the proposed changes. The meeting was satisfied with the detailed explanation provided by Ted McKeown from the drafting committee and the motion to adopt the new constitution was passed.

### Life members elected

A very moving part of the AGM was the nomination of Jack Munday for Life Membership. The nomination was spoken to by Meredith Burgmann. In the next *Bulletin* we will bring you more details from Meredith's speech but most members would be aware of the pivotal role Jack Munday and the Builder's Labourers' Federation played in saving Glebe from impending destruction from the radial freeways.



*Meredith Bergmann speaks to the nomination of Jack Munday as a Life Member of the Glebe Society (photo: Phil Young)*

Dennis McManus, the convenor of the first Planning Subcommittee was also nominated for life membership. Neil Macindoe described Denis' contribution to Glebe including his mentorship of Neil who is the current Convenor of the Planning Subcommittee. Again, more details will come in the next *Bulletin*.

The final nominee for Life Membership (*and clearly the least deserving by a country mile – Editor*) was Virginia Simpson-Young. Again, more details to follow in the next *Bulletin*.

### Commendations

Commendations were presented for a large number of members – too many to name here – who were involved with the incredibly successful Glebe Society Community Festival held at the end of June to celebrate the Society's 50<sup>th</sup> anniversary. As pointed out at the end of the AGM, Judy

Vergison (who was on the Festival Steering Committee with Dorothy Davis and Virginia Simpson-Young) was the mastermind behind the Festival and a great deal of its success can be attributed to her creative genius.



*Glebe Society President, Verity Firth, with guest speaker, Dennis McManus (photo: Phil Young)*

### Guest speaker

The final major piece of the AGM was an interview by Verity Firth with Dennis McManus. Dennis elaborated on his article, 'Recollections of a Glebe Society founding member' which appeared in *Bulletin* 3/2019. Dennis made an interesting observation during the interview that drew a fascinating connection between the '50 Years – the Bulletin Editors' View' documentary played before the AGM and an incident he had written about in his article. During the Fig St demonstration in 1974, Dennis had positioned his car in front of a bulldozer, an incident that was reported in *The Sun*:

*Police booked a motorist who parked his car in the path of a bulldozer. The man locked his car and refused to let police in. Later, he drove towards the police and refused to stop. His car pushed Superintendent Gill over.*



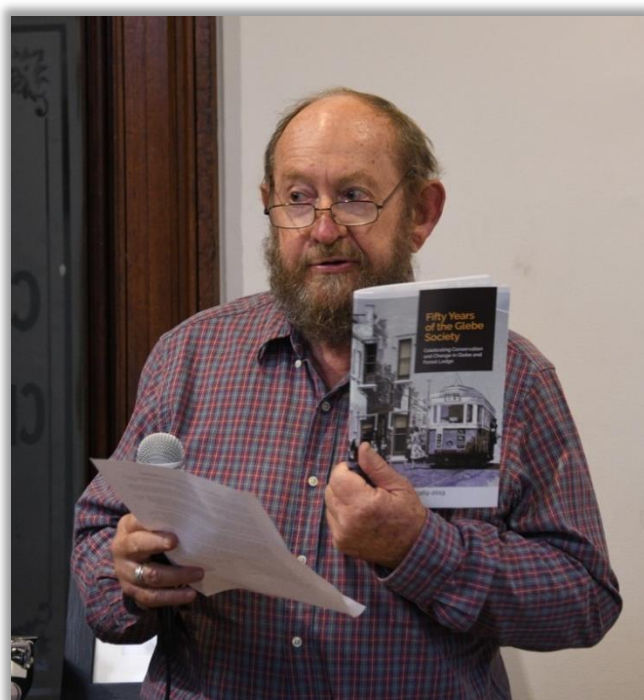
*Screenshot from the Glebe Society's Bulletin Editors documentary showing Dennis McManus' car blocking the path of a bulldozer at the Fig St demonstration in 1974. (source: <https://youtu.be/Qe7N7I4CxUA>)*

(For the record, Dennis denies he had attempted to run over the Superintendent.) Dennis was very surprised to see this incident appear in the documentary screened earlier in the afternoon!

A video of Dennis' and Verity's conversation will be uploaded to the Society's YouTube account.

### Release of Glebe Society History Book

All members who attended the AGM received their free copy of the 68-page full-colour booklet: *Fifty Years of the Glebe Society: Celebrating Conservation and Change in Glebe and Forest Lodge*. The booklet brings up to date the 40<sup>th</sup> anniversary history booklet. All members will have the opportunity to get their own free copy over the coming months.



*Neil Macindoe spruiking the hot-off-the-press Glebe Society history, Fifty Years of the Glebe Society: Celebrating Conservation and Change in Glebe and Forest Lodge. The book was written by Jeanette Knox, Neil Macindoe, Jan Macindoe and Ted McKeown with assistance from Virginia Simpson-Young and Dorothy Davis. (photo: Phil Young)*

### Second Screening of the Glebe Society 50<sup>th</sup> documentary

Prior to the AGM was a second screening of the Glebe Society's documentary made by Allan Hogan, *50 Years – the Bulletin Editors' View*, which was well-attended with around 65 people, most of whom were members. The film is now available on the Glebe Society's YouTube channel: <https://youtu.be/Qe7N7I4CxUA>. You can't watch it without coming away very proud to be a member of the Glebe Society – or wanting to become one!

# Annual Reports from the Glebe Society Subcommittees

---

## The President's Annual Report 2018-19 – Verity Firth

I feel very privileged to have been the President of The Glebe Society in its 50<sup>th</sup> anniversary year. The week-long community festival in late June was a wonderful example of the capacity of the Glebe Society to organise, mobilise and throw a good party.

The launch of the Glebe Community Festival was held in the Tramsheds on 23 June. The hall was packed with Glebe Society members, local residents, representatives of community organisations and local government agencies, founding members of the Society and local politicians. All of the Councillors from the City of Sydney Council, bar one, attended the launch, alongside our Federal Member Tanya Plibersek, State Member Jamie Parker and Lord Mayor Clover Moore.

The Glebe Society's Management Committee wanted to use this milestone anniversary as an opportunity to capture the legacy of the great work done by the Society over the past 50 years. We wanted to celebrate the history of community activism in Glebe and garner momentum for the building of a future vision for our area. I am confident that we succeeded in this mission.

Over 2,500 people attended the Festival's exhibition and 1,100 people attended a series of events throughout the week. Events included panels and talks; audio-visual displays; photographic exhibitions; a local school competition; walking tours of the suburb; and the exhibition in the community room at the Tramsheds. This exhibition consisted of 11 different displays covering all areas of the Glebe Society's activism and the history of our suburb.

The Festival also saw the launch of two new publications – the beautiful *The Villas of Glebe & Forest Lodge pre-1870*, documenting early villas of the Glebe Forest Lodge area, lovingly compiled by Robert Hannan, Peter Crawshaw and Lyn Collingwood. The second publication was launched by John Faulkner and documents the life story of Glebe identity, Sadie King – *From Glasgow to Glebe – Sadie King's story* by Glebe Society member Janice Challinor.

All of the displays in the exhibition were fantastic, but there are two that I would like to highlight. The first was the display dedicated to Glebe's Indigenous heritage and that examined the pre-settlement history of Glebe. The display identified the remaining physical evidence of the Wangal people of the Eora nation – including middens that

can be seen today around Blackwattle Bay and Johnstons Creek near Annandale.

Alongside the Gadigal people, the Wangal people were the first to experience the brutal effects of British colonisation, and they were decimated in the first few decades after invasion. Those who did not die were forced from this land and evidence of their culture and connection to the local area was destroyed by the new settlers.

However, in the 19<sup>th</sup> century Glebe became the home of other Aboriginal people moving to Sydney from the west and north to work in the shipyards and timberyards along Blackwattle Bay. Many Indigenous workers lived on the foreshores near where they worked, until they too were forcibly evicted by the government of the day.

Glebe then played a significant role in the Aboriginal Civil Rights movement, with the Freedom Ride of the late 1960s ending at Charles Perkins' house in Catherine St Glebe. Tranby Aboriginal College in Glebe is a meeting place for senior community members and has been the scene of key issues in the history of Indigenous activism, including meetings which led to the Royal Commission into Black Deaths in Custody and the move towards land rights legislation in the 1980s.

But Glebe isn't just the home of Indigenous political movements – Glebe has hosted the birth of significant cultural and sporting icons – the Bangarra Dance Company started in St James' Church Hall, and the famous boxer Dave Sands trained in a Glebe gym.

Glebe today has many Aboriginal residents and a strong tradition of community-wide NAIDOC events. The Yabun Festival is held on Glebe's doorstep at Victoria Park every January on Invasion Day, and is well attended and supported by Indigenous and non-Indigenous residents of Glebe.

The 'Glebe Society in Action: 1969-2019' display was a fabulous record of the Glebe Society's 50 years of activism and the timeline that formed the main part of the display was available for members at the 2019 AGM.

The timeline summarises the Glebe Society's major actions since its inception. The 1960s saw the start of organised resident action in the inner city. The Balmain Association was formed in 1965 and the Annandale Association in 1969. At this same time Glebe was threatened by two major proposals which would destroy the distinctive Victorian character of the suburb by demolition of terrace

houses to make way for three-storey flats; cut the suburb into three to make way for expressways; and destroy *Lyndhurst*, a fine Regency villa.

The Glebe Society was formed in March 1969 to fight these proposals. Our Society, led by the eminent art historian from the University of Sydney, Professor of Fine Arts Professor Bernard Smith (1916-2012) and his talented wife, a teacher, Kate (Challis) Smith (1915-1989), successfully opposed these threats.

Since its inauguration, the Glebe Society has achieved significant successes by lobbying, conducting local campaigns and collaborating with council and other bodies.

In the early 1970s the Society prepared a Master Plan for the area which resulted in the National Trust's listing of Glebe with the Heritage Council of NSW in 1974 as a Conservation Area. Also in the 1970s the NSW government abandoned its proposal for expressways and the Glebe Estate was preserved and refurbished as public housing.

The Glebe Society was active in the development of the concept of a light rail link through Glebe utilising a former railway goods line. We lobbied for the gradual acquisition of major waterfront parks – Bicentennial Park and Blackwattle Bay Park. We succeeded in gaining the extension of the foreshore walk and cycleway from the northern end of Glebe Point Rd to Bridge Rd near the Blackwattle Bay campus of the Sydney Secondary College. We fought for a Glebe Point Rd revitalisation project and the Council's restorations of *Bellevue* and the restoration and interpretation of the Walter Burley Griffin incinerator on Blackwattle Bay. Society members are active on social justice issues for our community, running a kitchen pack program for women leaving *Elsie* Women's Refuge and men re-establishing their lives after prison, providing other support for women's refuges in our area and supporting *Centipede*, the Before and After School Program at Glebe Public School.

The Festival was a massive volunteer effort. Special thanks must be paid to the 50<sup>th</sup> Anniversary Steering Committee consisting of Judy Vergison, Dorothy Davis and Virginia Simpson-Young. They

were supported by a larger working group consisting of Janice Challinor, Lyn Collingwood, Jane Gatwood, Jude Paul, Allan Hogan, Ted and Alison McKeown, Lyn Milton, Robert Hannan, Neil Macindoe, Asa Wahlquist, Peter Crawshaw, Jan Macindoe, Janet Wahlquist and Sarah Fogg.

In addition to these key people were dozens of community volunteers who can't be thanked separately but who know who they are.

On top of the work of the Festival, The Glebe Society has continued to do its 'business as usual' activities throughout the year. Our subcommittees (Bays and Foreshores; Blue Wrens; Communications; Community; Environment; Heritage; Transport and Traffic, and Planning;) have been working hard, meeting with stakeholders, creating plans of action and preparing detailed submissions for Council in relevant areas. The Society has continued to represent the opinions of its members to Council and other government authorities and we have been updating members with our monthly *Bulletin*, thanks to the hard work of our editor, Virginia Simpson-Young.

The plans for next year are big. The Society wants to campaign around the new Sydney Fish Market proposal, ensuring that there is no further alienation of public land. We are also keen to help revitalise Glebe Point Rd and support local businesses and to contribute to the Council's strategic planning process for its 2050 vision. Alongside our work around public amenity, we are committed to continuing our social justice focus, helping out with community projects and supporting Glebe Public School.

I have enjoyed my time as President of The Glebe Society enormously. Working alongside passionate, committed and community-driven people has been an inspiring experience. I am blown away by the professionalism and quality of the work of the Society and aim to be a very committed (ordinary) member from now on.

Verity Firth  
President

## Planning Subcommittee Annual Report 2018-19 – Neil Macindoe

In 1969 the fledgling Glebe Society faced enormous problems. Glebe was about to be shredded by major expressways. A corrupt Council was determined to knock down heritage buildings and replace them with cheap three (or more) storey blocks of units or similar dwellings. The waterfront was lined with derelict buildings, mostly ex-industrial but some ex-residential, all zoned for industrial use. Although Glebe was a waterfront suburb, you could barely see the water, except from a small reserve at the end of Glebe Point Rd.

The bays were often choked with logs. The White Bay Power Station belched out noxious and dirty fumes. The bays and watercourses were contaminated with poisonous heavy metals. The whole suburb had unusually high levels of lead in the soil from many years of paint manufacture and the operation of foundries in residential areas. The areas available for recreation were either tiny or alienated for various kinds of racing.



The housing was often in a state of disrepair. Many had seen no maintenance for decades. Plumbing was primitive, and electricity do-it-yourself and hazardous. Dwellings had few bathrooms, or one to be shared by many residents, and toilets outside were common. A kitchen was often a gas ring in the corner. Termites had been untreated, so there were houses, especially older ones, whose floors had rotted away, so the unfortunate inhabitants trod on the bare earth. Others just had holes to fall through. There was overcrowding and a lack of fire safety on one hand, and uninhabitable houses on the other.

With great courage and no resources except themselves, the Society drew up very practical strategies to tackle most of these problems. To the casual bystander it must have seemed wildly optimistic, and daunting even to the most sanguine. But the Society faced them with intelligence, careful planning and great energy, and within a few years many were overcome. After a couple of decades most goals were achieved and the suburb transformed. You can discover the story of these campaigns (more or less) in the 50th Anniversary booklet, *Fifty Years of the Glebe Society: Celebrating Conservation and Change in Glebe and Forest Lodge*.

### **The City's 2050 Strategic Plan**

By contrast, on 15 August I attended a function to tell community stakeholders about the City's new plan proposed for 2050, 30 years hence. Apparently the existing Plan, due to run until 2030, will need replacing. How many people at the function will be there in 30 years?

Sydney is the best resourced Council in NSW. The staff drew on these formidable resources to seek the views of 5,000 people, not just residents but workers, students, business owners and visitors as well. It should not surprise you to learn they discovered most people were anxious about the same things, such as public and affordable housing and climate change. This is a very political outcome to a very political strategy.

Don't get me wrong. I have a high opinion of the City, and strongly supported the takeover of Glebe in 2003 and the City's performance since. And, of course, the support and advocacy of local government is always worth having. However, the main issues identified by the survey are primarily matters for the State and Federal Governments, and the City's role is minor. NSW is one State that needs to consult its voters and carry out their wishes, as does the Federal Government.

The Glebe Society's achievements would have been much more limited without the occasional and

timely support of reforming governments at Federal and State level, which helps to explain why they were so unexpected. We may believe the City reflects our values, but our job is to convince the levels of government that have the power to make changes to share them as well.

There is a similar problem with New Democracy's Citizen Jury, selected at random to choose 15 issues from 500 proposed. Would you give your decision about the future to someone randomly selected from the street? Would anyone? The Glebe Society certainly didn't.

### **Planning Today**

It would be clear to anyone watching or reading the news (ABC2 *Four Corners* 19 August) that the planning system in NSW has serious problems. In the past, we have looked patronisingly at developing countries and said, as their buildings collapsed, that we have rules that prevent such disasters. Since the evacuation of Opal Tower at Olympic Park and the Mascot Tower we have had to revise our attitude, as more examples come to light.

The root of the problem lies more than 20 years ago when the State Government decided the building industry would not be able to keep up with the demand for new housing without special incentives. One of these incentives was to introduce a system of private certification, whereby a developer was able to choose whoever it liked to decide whether standards were being met. This was not the only measure taken on behalf of developers, but it was the most serious.

The Society objected from the beginning to this measure, and so has the Better Planning Network, the Statewide organisation to which we belong. Finally, an Upper House enquiry into this issue began on 12 August this year. One other problem among many is that flammable cladding has been used on several hundred high-rise buildings.

Fortunately, Glebe has not had many such problems, but the deregulation of the industry means that they can arise at any time, wherever Local Government is excluded from oversight.

Also problematic is that provision for affordable housing is limited, so despite the amount of building taking place, inadequate housing and homelessness are increasing. Public or social housing is also insufficient. The Society supports moves to remedy this situation, especially in the Bays Precinct.

*Neil Macindoe*  
Convenor, Planning Subcommittee

### Fish Market saga

The last 12 months have been dominated by issues relating to the planned relocation of the Sydney Fish Market and the future use of the current site. It has been a frustrating year in that, whatever the Government is planning, little has been shared with the community.

Having made a unilateral decision to relocate the new Fish Market (FM) to the head of Blackwattle Bay the Government released its grand design for the new building and surrounds in late 2018. I did an initial analysis of this concluding that it seemed a smart design by the Dutch architects responding to the constraints and opportunities of the site – but that the site remained a terrible choice (*Bulletin* 9/2018).

The problems with the site include the logistical and technical difficulties of construction over and under the waters of the Bay and resulting high-build cost, exacerbation of congestion from trucks, cars and buses on and around Bridge Rd (based on a planned six million annual visitors to FM) lack of parking, impact on Blackwattle Senior College, unresolved issues about disturbance of toxic pollutants on the Bay floor and width constraints that make the foreshore promenade inadequate for the mix of pedestrians and commuter and recreation cyclists. Building the FM at the head of the Bay breaches an important principle of opening heads of Sydney Harbour bays to the public and deprives the community of the long anticipated opening up of the view of Blackwattle Bay from Wentworth Park.

The unexplained relocation decision by the Government raises the fundamental question as to whether this is in the public interest. On the basis of the little information available, the Glebe Society is highly sceptical. It is now said that it was necessary to permit the FM to continue trading during the construction period. We note that could have been accommodated on the very large current site. The strong indicators are that the decision was driven by the desire for developers to have access to as much as possible of the current publicly owned site.

A formal DA is needed to provide accurate detail on the released design. This was ready for release in November 2018 but has not yet appeared – no explanation has been given.

In March 2019, the Glebe Society decided to take the initiative in the context of the NSW election and lobby for a rethink of the location of the new FM and push for a firm commitment that a significant proportion of any residential development (30-50%)

on the old site be allocated to affordable and social housing. NSW has a recognised crisis in the lack of such housing – particularly in the inner city. The publicly-owned FM site provides Government with an excellent opportunity to provide affordable accommodation to compensate for that which they have removed from the inner city. Candidates were lobbied on this.

Like others, we anticipated a change of Government and were pleased that the Opposition improved its affordable housing policy with a strong target for residential development on publicly-owned land. We also considered it possible that they would be open to rethinking the location of the new FM.



*View of Blackwattle Bay and the Anzac Bridge from beneath the viaduct in Wentworth park – a glimpse of what is possible if the waterfront is returned to the public (source: Fifty Years of the Glebe Society: Celebrating Conservation and Change in Glebe and Forest Lodge)*

**Post-election:** It is not likely that the Berejiklian Government will reverse its relocation decision. With the breaking up of Urban Growth NSW in 2018, there is currently no consultation mechanism on the FM or the overall Bays Precinct with Government. Even when the DA does appear, we will be responding to a development application

emanating from a government agency (Infrastructure NSW) which will be subject to approval by the Planning Minister. Not a lot of room here for an independent response to community objections.

The FM sites (new and old) are part of a declared 'State Significant' site and so all decisions are at the discretion of the Minister. The City of Sydney Council – which opposed the relocation – therefore has no authority. In such a context, we either campaign directly – as well as responding to the DA when we are eventually invited to do so – or give up. The mood at the 50<sup>th</sup> anniversary celebrations was not for giving up.

**TGSI campaign.** The Glebe Society has therefore recently determined (June 2019 meeting) to mount a campaign opposing the relocation of the FM and the opportunity to provide a significant boost to inner city affordable and social housing as part of any residential development of the current site – without waiting for the missing DA. Details of this will be publicised soon.

**Government agenda.** The Government moved quickly after the election and signed an agreement with the FM management to relinquish their lease on the current FM site which ran until 2044 in return for the future right to an extended lease on the new building. The new lease will extend beyond 2044 by three 10 year options for renewal – this will guarantee an effective 50 year lease to 2074. This was clearly a preemptive move by Government to forestall any opposition. My understanding is that this agreement has a life of 12 months. The ongoing delay in the releasing of the DA has therefore been puzzling.

---

*We either campaign directly – as well as responding to the DA when we are eventually invited to do so – or give up. The mood at the 50<sup>th</sup> anniversary celebrations was not for giving up.*

---

It now appears that the reason may be related to the Government budget situation and lack of certainty about the pending sale (or 99-year lease) to developers of the current site which is needed to generate funds for the expensive build on the new FM. This could just signal an emerging problem

which might give the community some space to exercise influence.

**Trial on-demand ferry.** A trial for an on-demand ferry stopping at Barangaroo (the hub), Fish Market, Blackwattle Bay and Pirrama Park is scheduled for late-September as a joint venture between Transdev and Government Transport. The ferry will accommodate 60 persons. There is disappointment from Annandale residents that Rozelle Bay is not included. More details soon.

### Key activity this year

- A number of articles in the *Bulletin* updating members on developments re the FM and the Bays Precinct more generally.
- Meeting with Barry Mann, CEO Urban Growth and Fred Holt 3XN architects on 30 November 2018. An opportunity for the ex-Community Consultation Group to discuss the FM design with the architect. It was envisaged the DA would be available within the week and construction commence mid-2019.
- Bays Precinct Community Meeting 30 May 2019. Attended the third meeting with City of Sydney and Inner West Councillors, MPs Jamie Parker and Alex Greenwich and community representatives from Glebe, Pyrmont, Rozelle and Annandale. Discussion on possible campaign strategies and contributions from MPs and Councillors as well as community groups. This group will meet again when either the FM DA or the overall Masterplan is released.
- Meetings with the Fish Market Management: Attended three meetings with the Manager of the FM and other community representatives to discuss the relocation and related issue. This useful forum was initiated by the FM management and facilitated by John Faulkner. The FM is very keen for the relocation to proceed and is currently worried about the delay in releasing the DA.

*Lesley Lynch*  
Convenor, Bays and Foreshores

[Editor's Note: The Fish Market is the current key issue for the Bays and Foreshores Subcommittee. If you would like to be involved in the campaign, you should contact [bays@glebesociety.org.au](mailto:bays@glebesociety.org.au).]

## Heritage Subcommittee Annual Report 2018-19 – Brian Fuller

### Membership

Members of the Heritage Subcommittee are: Lydia Bushell, Fiona Campbell, Margaret Cody, Lyn Collingwood, Peter Crawshaw, Brian Fuller,

Rodney Hammett, Robert Hannan, Allan Hogan, Joseph King, Ted McKeown and Jude Paul.

During the year Ted relinquished the role of convenor and the Subcommittee is indebted to his dedication and expertise, both as convenor and as a continuing member of the group.

Andrew Botros recently relocated to New York. We know he will be very successful in the Big Apple and we thank him for his valuable contribution to the Society. We welcome new member Joseph King.

I wish to express my appreciation to all Subcommittee members for their passion, dedication and collaboration together with their welcoming spirit. They contribute wholeheartedly to what we do to the extent that it makes the role of convenor a much more enjoyable one.

---

*Given the success of the entire Festival, the Subcommittee is looking to enter it into a category of the National Trust Awards 2020.*

---

### **50<sup>th</sup> anniversary Festival**

There is no doubt that the 50<sup>th</sup> Birthday celebrations absorbed much of our focus during the past year, particularly for the working party within the Subcommittee.

The working party curated over 120 prints, paintings, maps and illustrations of Glebe and Forest Lodge, some of which had not been previously displayed in publicly. . We produced *Villas Glebe & Forest Lodge pre-1870*, a beautiful 44-page book that catalogued the significance of many early buildings in Glebe and Forest Lodge. Regrettably some of those buildings have not been saved. We printed 600 copies, sold 479 and gave another 29 to dignitaries and donating institutions. We are still selling!!

An exceptional one-hour documentary video gave an appreciation of the changes that have occurred in Glebe Point Rd between 1991 and now. On the surface it may look the same, but it has changed considerably.

History and Heritage was also presented via two stage productions; *The Mayoral Procession* and *Glebe's Colourful Characters A to Z* – both sold out performances.

The calibre of these productions and presentations is a result of the talents and persistence of some very special people. They know who they are and we are exceptionally privileged to have them.

The working party worked closely with the 50<sup>th</sup> Steering Group, and all of us are so indebted to that Steering Group of Virginia Simpson-Young, Judy Vergison and Dorothy Davis. These three people raised the bar and we applaud them.

Given the success of the entire Festival, the Subcommittee is looking to enter it into a category of the National Trust Awards 2020.

### **Reinstatement of the WW1 Tramsheds Memorial**

On 8 November 2018 a dedication ceremony was held at The Tramshed gardens to mark the occasion of the return of the WWI Memorial Statue to its rightful place. Ted McKeown officiated as Master of Ceremonies, with speeches by Max Solling, Rev Father Dominic Murphy, Pastor Ray Minniecon and Lord Mayor Clover Moore.

The ceremony was the culmination of many Society members working together, and with the City of Sydney, to bring the Memorial Statue back.

The Subcommittee has requested that the City list the statue as a local Heritage item. It will take the City a good 12 months or more to process the listing.

Some may recall that the DA for the Tramsheds required that the original Water Tower be reinstated. It is conspicuous by its absence and we are chasing the developer for a response and call to action on this issue.

### **Office of NSW Minister for Heritage**

The State Government announced that it was closing the Office of Environment and Heritage with effect from 1 July 2019 and that it would be restructured in some form and potentially fall within the control of the Department of the Premier and Cabinet.

Notwithstanding that move, the Minister responsible for Heritage is not the Premier, but The Hon Don Harwin MLC, Special Minister of State, Minister for the Public Service and Employee Relations, Aboriginal Affairs, and the Arts.

The President has written to the Minister seeking clarification, and until a response demonstrates otherwise, it would appear that the administration of Heritage in NSW, both at Departmental and Ministerial level, does not have a cohesive approach.

In an environment of zealous approaches to new infrastructure and developments, the protection of Heritage assets now requires greater vigilance.

We await a meeting with the Minister to seek a satisfactory outcome.

### **Community Engagement**

The Subcommittee continues to work with the community, be they local or relatives of locals past or present. In the past year we have processed some 55 enquiries from the community seeking information on earlier



generations of current families and/or of the homes they may have lived in.

Some enquiries are readily answerable, whilst others bring forward new information that assists our historians, Lyn and Rodney, to add to the already significant data base of local history.

Our task is to collate all the information we have, index it for future reference and store it digitally.

### **Future Glebe**

To quote the Historic Houses Association, 'Our heritage is about our future as well as our past'.

I recently attended the Sydney 2050 Conversation Day sponsored by the City of Sydney, and in a previous report within the *Bulletin*, highlighted the issues facing Sydney, and by implication Glebe and Forest Lodge, as we head towards 2050.

The impact of a growing population on infrastructure, affordable housing, suburban economies and climate change will have an undeniable pressure on the heritage assets that we are privileged to have within Glebe and Forest Lodge. This means there is much work to do.

One significant issue is the revitalisation of Glebe Point Rd retail. This has been the subject of an earlier Glebe Point Rd Study in 1991, now out-of-date. The Subcommittee has commenced a review of all retail properties between Parramatta Rd and Bridge Rd, capturing heritage value, current condition and usage. The Subcommittee monitors DA activity to record trends in change of use.

Numerous vacant shops are appearing, many in heritage value buildings, and whilst within the local conservation area these are best-preserved if occupied with sustainable usage before they succumb to either demolition by neglect or demolition by developers.

Broadway Shopping Centre and The Tramsheds are successful retail alternatives to shopping on Glebe Point Rd. Together with Internet shopping, the degree of retailing along Glebe Point Rd as we know it is changing.

The challenge is how do we maintain these valuable buildings and under what circumstances? It's early days, but discussions are commencing with Sydney City Councillor(s) and the local Chamber of Commerce.

### **Shared Issues**

Modern life is not siloed, and occasionally neither are the activities of a Subcommittee. Areas of shared concern with other

Subcommittees and like-minded groups have included the following:

#### ***Ernest Pedersen Reserve***

The City of Sydney recently released plans to upgrade this reserve, located on Ferry Rd and adjacent to State Heritage listed *Rothwell Lodge*.

There are three areas of concern to the local community and the Blue Wrens and Heritage Subcommittees.

The local community is exceptionally upset that the reserve is to extend the playground offer for children up to eight years of age, notwithstanding that the existing patronage is by residents of all ages. The community seeks a more intuitive and creative design approach for the benefit of all users of the reserve.

The Blue Wren Subcommittee has worked for many years with the Ferry Rd Bushcare group to establish native flora and birdlife within the park. Their efforts are paying dividends and they are understandably very concerned about the proposed introduction of new and additional unnatural surfaces to the reserve.

If the Council were to observe the controls contained in its own LEP and Heritage DCP, the design proposals so far fail to conserve the heritage significance of a heritage item (*Rothwell Lodge*) and of a heritage conservation area, including associated fabric, settings and views.

The two Subcommittees have worked together, with the City of Sydney committing to undertake another review of their proposals.

#### ***Fish Market***

All Subcommittees have expressed their opposition to the relocation of the Fish Market. The Society's policy statement that acknowledges, amongst other things, that the Fish Market does require redevelopment, and that we adhere to the Society's constitution in relation to 'achieving public access, both pedestrian and cycle, to the entire waterfront of Glebe' essentially confines the Society's fight to the current site, preserving the water front and Wentworth Park amenities and heritage value for all.

#### ***Paddington Society, Millers Point Residents' Association and the Glebe Society***

The Heritage groups within each organisation are united in the common initiative that the City of Sydney take a leading role in educating the owners of heritage properties and developers in best practice in maintaining, altering or adaptively reusing those properties, and assisting them in choosing appropriate materials

and finding (without recommending anyone in particular) relevant experts and tradespeople.

Despite a quasi-early commitment from Council, budget priorities have slowed the initiative considerably. Nonetheless we remain optimistic

that the Council will re-prioritise the initiative within 12 to 18 months.

*Brian Fuller*  
Convenor, Heritage Subcommittee

## **Blue Wren Subcommittee Annual Report 2018-19 – Andrew Wood**

---

The objectives of the Blue Wren Subcommittee include increasing the diversity, abundance and distribution of indigenous fauna and flora in our suburb and also to involve the local community in habitat creation and enhancement activities. We work with the five bushcare/landcare groups in Glebe and on an annual basis hundreds of local residents spend time caring for our local parks. Members are always welcome to join the Subcommittee and to help on planting days and in our annual bird survey as well as attending our annual biodiversity talk and other events. Please feel free to contact us at [bluewrens@glebesociety.org.au](mailto:bluewrens@glebesociety.org.au) if you would like to attend an activity.

The Subcommittee has 12 members and during the past year met on six occasions. National Tree Day (Sunday, 29 July 2018) was celebrated with a very successful planting day in Paddy Gray Reserve, Hereford St and 70 which adults and children attended. Other regular plantings of native flora by volunteers were held by the Friends of Orphan School Creek Bushcare Group, Glebe Palmerston and Surrounds Landcare Group, and the Ferry Rd Bushcare Group.

Jan Craney, a much-loved and respected former Convenor of the Subcommittee left us a bequest in her will, and the funds were used to establish the Craney Small Grants program, which supports biodiversity projects in Glebe's preschools, primary schools and high schools. In 2018, a grant was given to Glebe Public School entitled 'Glebe Public School gets a native bee buzz' and this year a grant was awarded to Sydney Secondary College, Blackwattle Bay, for their project entitled 'Blackwattle Bay', which proposes the establishment by the school's Environment Committee of a native tree garden. In each case the grant had a value of \$1,000.

The Society's sixth annual spring bird survey was led by Judy Christie and commenced at 7am on Sunday 28 October. It was conducted by 18 enthusiastic volunteers and in total 30 different bird species were recorded, which equals the highest number of species recorded. The overall number of 459 birds seen was also a great achievement. The dominant species were the same as in previous years – Rainbow Lorikeets followed by Noisy Miners. Species seen for the first time included the Tawny Frogmouth, the red-rumped Parrot and Galahs, the latter two possibly an indication of birds

more commonly seen inland coming to the coastal areas due to drought conditions. Once again, our target species, the Superb Fairy-Wren, was not sighted in Glebe or Forest Lodge.

The issue of accident insurance provided by the City for its bushcare volunteers remains of concern. The initial unsatisfactory insurance policy required an individual bushcare group to pay the first \$500 of any accident claim. In March this year, the City instituted a new policy without such a requirement, however, the policy does not fully cover volunteers over 75 years of age.

There will have to be a future article in the *Bulletin* about the saga over the past three years of the Glebe Palmerston and Surrounds Landcare Group's repeated requests for a tap in the lower part of the Palmerston Ave park for watering the new native flora. The City says the site for the tap is not on their land, which Sydney Water says is owned by Transdev, the operators of the light rail, but they will not give permission to access the land to install the tap, despite the Group working there regularly to plant native flora!

The year ended with the Society's 50<sup>th</sup> celebrations which included the Subcommittee's annual biodiversity talk. It was entitled *Fighting Back: Restoring Australia's Unique Biodiversity* and was given by Shauna Chadloe, Chief Development Officer, from the Australian Wildlife Conservancy. The Conservancy is especially interested in saving Australia's endangered wildlife – 31 mammals have become extinct in our country since European settlement. Using fencing (at times electrified) to keep out foxes and cats, removing the feral herbivores and having small controlled burnings to reduce the chance of a major bushfire all lead to a protected habitat where the native fauna and flora can thrive. Further, threatened species can be translocated into these protected environments where they are able to breed and significantly increase in numbers. The Subcommittee also prepared a poster (about 2x3 m) for the 50<sup>th</sup> celebrations to demonstrate photographically the thriving native flora in our parks that has been planted and cared for by the volunteers. Of special interest were the photos dating from the 1920s that demonstrated dramatic 'before and after' comparisons – for example, in a 1950s photo of Ernest Pederson Park in Ferry Rd looking south across Glebe there is not a single tree in sight.

In concluding, we would like to acknowledge the assistance the bushcare groups and the Subcommittee have received during the past year from the City of Sydney. We have worked closely with Daniel Harris and the late Rae Broadfoot (Community Garden and Volunteer Coordinators)

and Sophie Golding (Urban Ecology Coordinator), as well as Joel Johnson, Manager, City Greening and Leisure.

*Andrew Wood*  
Convenor, Blue Wren Subcommittee

---

## Environment Subcommittee Annual Report 2018-19 – Asa Walquist

---

The Environment Subcommittee has many and varied areas of interest.

In August 2018 we received reports that a fox had killed pet chickens that were also a popular attraction on the foreshore walk. The City of Sydney Council's initial response was to claim there were no reported sightings of foxes in Glebe, and to suggest the bereaved owners contact the State Government. The Glebe Society, through its Facebook page and word of mouth, soon collected an astonishing array of sightings of foxes across Glebe, including a photo of a fox strolling down Leichhardt St.

The Glebe Society then wrote to Council citing the number of foxes seen in Glebe, and requesting a fox control program for Glebe. The Director of City Services, David Riordan, wrote back, referencing a 2016 fox control program that City of Sydney had been involved in, and expressing possible support for a future program in Glebe. He requested that members continue to report fox sightings to Fox Scan (<https://www.feralscan.org.au/foxscan/>).

The main task of the year was mounting the display on the Glebe Society's fight to open the foreshores to public access, and to turn them into parkland.

When the Glebe Society was founded 50 years ago, there was just one waterfront park in Glebe,

what is now Pope Paul VI Park at the end of Glebe Point Rd.

The rest of the foreshore was covered with timberyards and associated factories. As the yards and factories closed down, the Glebe Society lobbied for the formerly industrial area to become a foreshore park. There were many campaigns over the years. The result is a 2.2km walk through four parks, from Bridge Rd to Chapman Rd, planted with over 400 trees and 8,500 shrubs, herbs and grasses.

This history will be featured in upcoming *Bulletins*.

The foreshore walk is a significant achievement, one of inestimable benefit to the people of Glebe. The environment principles espoused by the Glebe Society – that access to the waterfront should be open to all, that every effort should be made to green our suburb, and that waterfront industries that no longer actually use waterfront access should be moved away – will all inform our upcoming battle against the building of the proposed Fish Market on the new site in Blackwattle Bay. (Over 90% of the produce sold at the Sydney Fish Market is reportedly transported to the site by road. Commercial fishing is banned in Sydney Harbour).

*Asa Wahlquist*  
Convenor, Environment Subcommittee

---

## Traffic and Transport Subcommittee Annual Report 2018-19 – Janet Walquist

---

### Separated Cycle Ways

We have made submissions to the City that there need to be separated cycle ways running north and south, and east and west, through Glebe and Forest Lodge. Essentially the City has said it cannot act because Roads and Maritime Services (RMS) does not have the funds for this work. Before the last state election, the Coalition promised that more funding would be provided for cycling infrastructure.

### New Fish Markets

The current proposal to relocate the Fish Markets to Bridge Rd opposite Wentworth Park will result in major traffic challenges (including construction traffic). We will need to ensure that proper traffic studies are commissioned as part of the DA

process. We will make submissions on the traffic issues when the DA is released. We anticipate that parking being provided at the site and not in the streets will be an issue. Appropriate public transport will need to be provided to the new site.

### Forest Lodge School Pedestrian Crossing

There are safety concerns about the corner of the Pyrmont Bridge Rd and Ross St. A meeting was held involving all stakeholders and the RMS undertook to remove some unnecessary signage and replace damaged safety barriers (this has been done). The RMS said they would look into reducing the speed limit from 60km on Bridge Rd and Ross St. The proposal from parents for a pedestrian crossing on Ross St near Charles St and across Charles St was ruled out by the RMS,

firstly due to Ross St being four lanes and on Charles St because it would reduce parking.

### **Shared Foreshore Path**

We have tried to persuade the City of Sydney to recognise the problem of speeding and reckless cycling that happens along the shared foreshore path. The path is not suitable for speeding cyclists, who put the safety of pedestrians in jeopardy. The city is very pro-cyclist so has not been prepared to do anything other than occasionally having Rangers there to ask cyclists to slow down.

### **Glebe Bus Services**

From 1 July 2018 the 431, 433 and 470 bus services were contracted to a private operator appointed by NSW Transport. They have a contract for seven years, with a review to take place after five years. They have recently advertised a change in timetable and we need members to advise us of any adverse effects from these changes.

### **Traffic on Glebe Point Rd on Saturday as a result of the Markets**

The traffic on Glebe Point Rd on a Saturday is significantly affected by the increased foot traffic attending the markets. We have made representations to the relevant authorities that the markets engage a 'lollipop' person to manage the pedestrian traffic in front of the school .

### **WestConnex**

The WestConnex Community Reference Group was set up to represent the interests of communities affected by the WestConnex project with the objective of trying to alleviate the impact of WestConnex on those communities. The Glebe

Society has a representative on that Committee. Recently a plan has been released for the Rozelle Interchange which involves a series of modifications to the plan accepted by the State Government. There is to be a raised overpass so vehicles can access Victoria Rd and Anzac Bridge avoiding the lights at the intersection of The Crescent and City West link. There is to be a shared pedestrian and cycling bridge from the Crescent over the City West link to Rozelle Rail Yards. Burawan Park, next to Rozelle Bay Light Rail stop, which provides not only a park but also access between Railway Parade, the light Rail and the Crescent for cyclists and pedestrians will disappear. An upgrade to the Crescent, Johnson St, Chapman Rd intersection is proposed to allow for better and greater traffic flow. The current pedestrian crossing across The Crescent to get to Bicentennial Park is to be relocated. Under the new plan, crossing The Crescent will require crossing Johnson St, crossing the left entry road from The Crescent and then crossing The Crescent proper and then crossing Chapman Rd, four roads instead of one. While the extra distance may only be 200 metres the inconvenience of waiting at lights to cross will be significant. Pedestrians are clearly the last priority in this proposal. This plan also prohibits right-hand turns from Johnson St to The Crescent which will disadvantage local traffic. These modifications are now on public exhibition with submissions to be lodged with the State Government by 18 September. The concern for Glebe is the increased traffic that the Rozelle Interchange will bring and inconvenience to local vehicular traffic and pedestrians.

*Janet Wahlquist*  
Convenor, Traffic and Transport Convenor

## **History & Heritage**

---

### **Mystery photos**

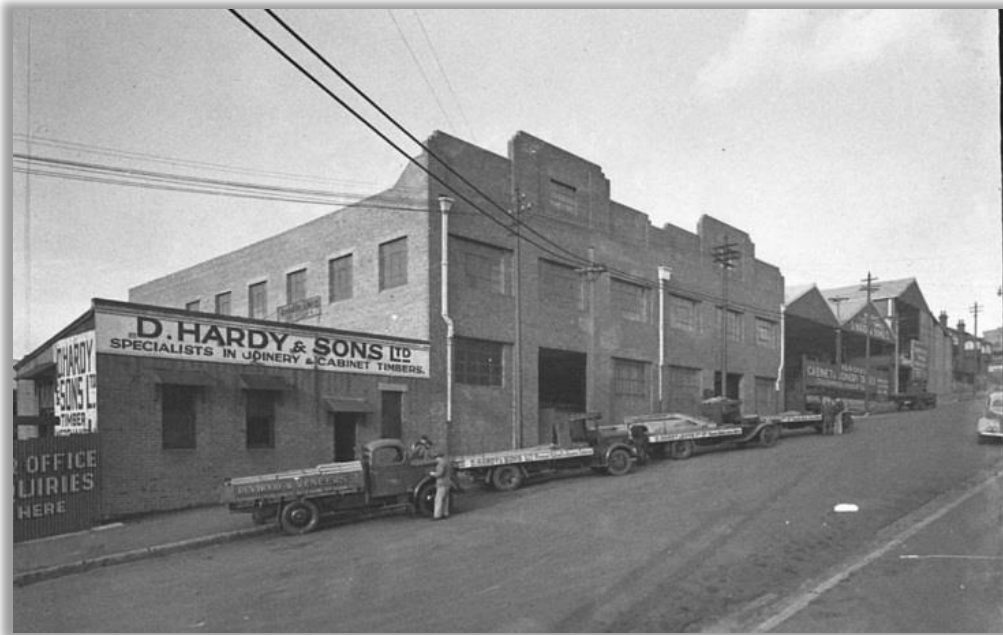
#### **The last mystery photo**

John Lagerlow identified June's mystery picture as the Art Deco auditorium of Grace Bros Broadway, a popular venue for dances, fashion parades, children's parties and pantomimes. The photo was taken in 1937.





## This month's mystery photo



### Where are we?

Please send your suggestions to [history@glebesociety.org.au](mailto:history@glebesociety.org.au)

## Who Lived in Your Street? By Lyn Collingwood: Ernest Pedersen (1910-74)

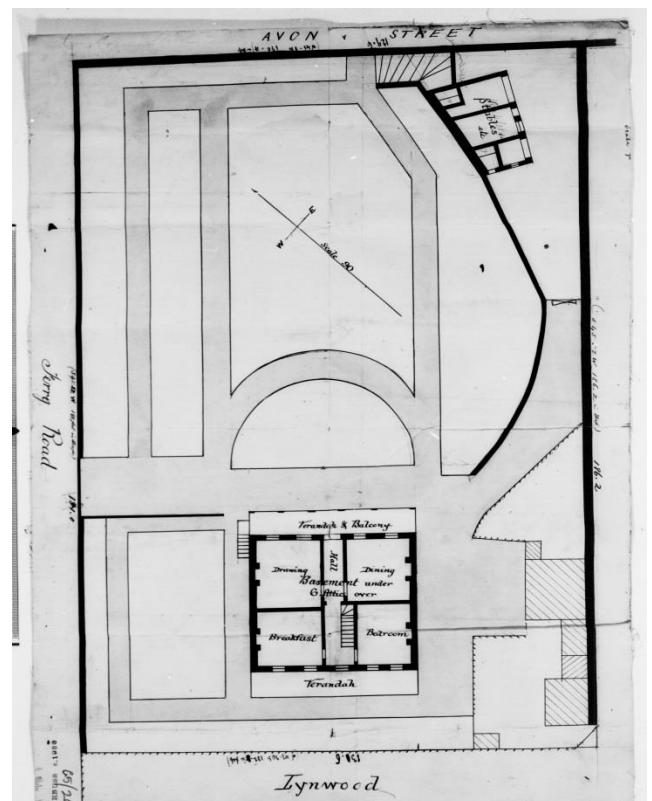
Ever since Sydney's first elected mayor John Hosking got his name on the city's ward markers in 1843, it has been common for local identities to be similarly rewarded. In Glebe many landmarks commemorate past aldermen: Foley Park, Seamer St, Chapman Steps, Walsh Ave and Millard Reserve. Ernest Pedersen's name is preserved by steep steps linking Avon and Burton Sts, and a reserve on Ferry Rd.

Ernest Francis Pedersen was born in Ultimo on 13 February 1910, the son of Danish-born seaman William Neils Pedersen who had migrated from Hamburg ca 1878 and married Margaret Patricia Keogh in 1901. Ernest's siblings: William Neil (1901-55), Martin who died soon after his birth in 1903, Daisy Josephine (1905-71), Herbert James (1907-57), Ena Veronica (1912-73), and Conlon born in 1916. The family were Catholic and keen Labor Party supporters, members of its Pyrmont branch and of the Pyrmont League. A large number of ALP politicians and Party organisers attended the funeral of Margaret Pedersen in 1937, an event written up in the *Labor Daily*. Her widower moved from 74 Bulwara Rd Ultimo to Glebe; at the time of his death in 1945 his address was 65 Lombard St.

In the 1920s Ernie Pedersen joined the Naval Reserve and the Citizen Naval Forces. In 1931 he stood unsuccessfully as a Lang candidate in municipal elections. By 1939 he was living in Glebe at 69 Westmoreland St, a JP and secretary of the Glebe ALP Municipal Assembly. When the Toxteth branch of the ALP was formed in 1940, Pedersen became its dominant member.

After enlisting in the RAAF in 1944, Pedersen served in Borneo and Balikpapan as Leading

Aircraftman with the 2nd Squadron before his discharge in 1946. Post-war he worked as a storeman at the University of NSW. He was an organiser for the Miscellaneous Workers' Union and later an executive member of the Storemen and Packers' Union.



Ernest Pedersen Reserve was originally Rothwell Lodge's front garden (image: Mitchell Library subdivision plan G5/203)

An alderman from 1941, Pedersen was Glebe Council's last deputy mayor before the municipality was amalgamated with Sydney in 1948. Elected to the City of Sydney in 1950, he was a proponent of light rail for the inner city and chaired its finance committee which oversaw reduced spending. In 1952 he was appointed a trustee of Wentworth Park in place of retiring Glebe alderman bookmaker William Walsh.

1953 was an eventful year for Councillor Pedersen, no longer in office by its end. In February he was trying to have something done about the pigeons roosting on Sydney Town Hall and luring pedigree racing pigeons off their course. Glebe's pigeon fancier and Council driver Bill Doherty had a plan to get rid of them by luring them into their nests and then wiring them in. A counter suggestion was to plant trees near the Town Hall. In April Pedersen pledged that Council would make land available for a rebuilt Glebe Rowing Club following its destruction by fire. In May he supported the demolition of the Exhibition Building, an 'eyesore' in Prince Alfred Park, and censured Sydney University students for their behaviour on Commem Day. In July he threatened to resign from Council over a draft master plan for Sydney involving the demolition of 2000 Glebe houses to make way for an expressway. Throughout the year he was involved in plans to build the swimming pool in Victoria Park, controversial because its site was an unspoiled secluded area.

Pedersen came under scrutiny following Arthur Bridge's allegations in State Parliament that he had accepted 'tributes' from Council employees, and claims in journalist Frank Browne's newsletter *Things I Hear* that he had profited from his office. Lord Mayor Pat Hills conducted an inquiry, and boarding-house owner Pedersen was questioned about his finances by the ALP State Executive. He explained that his success as a gambler accounted for his ability to buy, in addition to his residence in Glebe Point Rd, two other houses in Bridge Rd and Arcadia Rd.

In November 1953 Ernie Pedersen was one of three Glebe aldermen rejected by the ALP's State executive for re-election after the Local Government Act was amended, reducing the number of City aldermen. In December he resigned as secretary of the Toxteth branch. He later stood unsuccessfully for the City Council as a Democratic Labor Party candidate. Pedersen died at Glebe on 8 August 1974. That year his name was given to a recreation centre in Sydney Hospital where he had been a director.

In 1949 Stanley Ernest Elliott, who had inherited *Rothwell Lodge*, transferred 18 perches of the property to the City of Sydney Council. Following Stanley's death in 1952 his widow transferred the residue and *Rothwell Lodge's* front garden became

the Ernest Pedersen Reserve. There was opposition from some locals when Pedersen's name was also given to nearby steps on 'Monkey Hill'. Today there is similar disquiet about City of Sydney plans to 'upgrade' the pocket park, used primarily for passive recreation but in danger of over-development.

Lyn Collingwood,  
Local Historian

**Sources:** Australian War Memorial; City of Sydney Archives; Hogan, Michael *Local Labor: A History of the Labor Party in Glebe 1891-2003*; NSW electoral rolls; NSW Land Titles Office; NSW registry of births, deaths & marriages; Sands *Directories*; Trove website.



Ernest Pedersen Reserve today (image: Lyn Collingwood)

## Back by popular demand! A Glebe Walk with Max Solling

Max Solling (who needs no introduction) has agreed to lead a walk on Saturday 12 October at 2pm, meeting at the corner of Wentworth Park Rd and Mitchell St. Bookings via Eventbrite: <https://www.eventbrite.com.au/e/max-solling-history-walk-of-glebe-tickets-70484841057>.

## Position Vacant

Looking for a writer to pen about 300 words once every five weeks or so for the *Times Past* page of the *Inner West Courier*. The slot is shared with other historic/heritage societies. It's a good means of getting information about Glebe to a wider community, and some surprising readers make contact.

Lively copy, short paragraphs. One or two strong images. Unpaid. I can let you see the dozen or so I've written. Upcoming deadlines for the rest of 2019 are 30 September, 4 November.

Lyn Collingwood: [history@glebesociety.org.au](mailto:history@glebesociety.org.au)



## Pendrill Street, Glebe: The story behind the name, by Rodney Hammett

Once a track created for access to part of Alexander Brodie Spark's ill-fated Village of Eglintoun in the 1840s, Pendrill Street became a designated road in the mid-1880s. Today it leads from Glebe Point Rd to the entrance of the Sze Yup Temple.

Named after the Rev John Pendrill, the first principal of Glebe's Primary Classical School for Boys, but where was this school and who was the Rev Pendrill?



*Pendrill St Glebe (photo: Rodney Hammett)*

The son of surgeon and apothecary Dr John Pendrill of Clifton, Gloucester, England John was educated at Eton then graduated with a BA from St John's College, Oxford when he was 25 in 1835<sup>1</sup>. At the 1841 English census John is an Anglican clergyman married to Margaret Cassels (in 1837) with a two year old daughter Ella and living near Southampton, England with 3 servants. At some stage he was the British clergyman at Ghent, Belgium.

Next found officiating at the 25 July 1855 marriage of W H Glover Esq of San Francisco at St James Church, Sydney John was in Australia without Margaret and Elle. They in 1851 were living with Margaret's parents in Somerset, England, her father Robert a successful Scottish born merchant.

John was more than just a clergyman his vision for teaching gaining the support of a number of prominent Sydney leaders including the Rev John Woolley (Principal of Sydney University), Sir Alfred Stephen (Chief Justice of NSW), and Edmund T Blackett (Architect). This led to the establishment of a primary school for boys under 10 years of age at Eglinton House, Glebe Point in July 1858<sup>2</sup>. Located at current No 268 Glebe Point Rd, Eglinton House demolished in the late 1940s. Pendrill St runs beside No 270.

Over the years pupil numbers grew from the initial two, the school expanding to provide the education required to enter the Public Service and Sydney University. The Primary Classical School for Boys

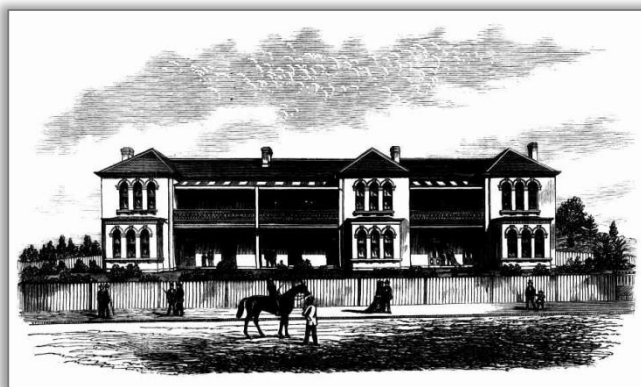
became the Glebe Grammar School and finally the Collegiate School. Teaching methods and results were held in high regard, pupils coming from Glebe families such as the Blacketts and the Allens and boarders from further afield.

Rev Pendrill also maintained close ties with Sydney University 1867 being a year of note. He was admitted to the degree of MA from the University in July then in November elected clerical Fellow of St Paul's College, at the University.

Unexpectedly he died aged 62 on 21 January 1872 at Eglinton House. A number of Rev Pendrill's ex-pupils wanted to record their gratitude and today we can see it in his memorial, the three stained-glass panels above the communion table at St John's Church, Glebe.

Margaret had died in 1866, a year after Ella married clergyman George Woodyatt at Paddington, England. In his will where he appointed George Wigram Allen, Arthur Hill Macfee and Edmund Thomas Blacket as executors John left a sizable portion of his £3,500 estate to Ella<sup>3</sup>.

The school continued to succeed under the previous second master Thomas James Bowyer, assisted by a legacy from the Rev Pendrill, so much so that by 1878 it had outgrown Eglinton House and a new school was constructed at the corner of Glebe Point Rd and Wigram Rd. Located on part of the Toxteth Estate, we know the site today as the Glebe Library.



*Collegiate School, Glebe Point in 1878 (source: Australian Town and Country Journal<sup>4</sup>)*

These grand plans unfortunately came to naught with T J Bowyer becoming insolvent in 1879<sup>5</sup> the building then being converted to the Glebe Children's Hospital which opened on 1 January 1880<sup>6</sup>.

<sup>1</sup> Oxford University Alumni, 1500-1886; <sup>2</sup> Empire (Sydney); Fri 23 Jul 1858, p1; <sup>3</sup> New South Wales Will Books 1800-1952; <sup>4</sup> Australian Town and Country Journal; Sat 20 Apr 1878, p24; <sup>5</sup> SMH; Tue 28 Oct 1879, p6; <sup>6</sup> Freda MacDonnell; 'The Glebe: Portraits and Places', p85

## Glebe, Naturally

---

### 2018 Craney Grant Report: 'Glebe Public Has a Native Bee Buzz'

Glebe Public School's Parents' and Citizens' Association thanks the Glebe Society's Blue Wren Subcommittee for the award of a 2018 Craney Grant to fund a native beehive for the playground at the school.

The beehive has generated a lot of curiosity – not least because the physical appearance of the native bees has challenged the kids' (and adults') preconceived ideas of what a bee looks like! With the funds awarded, we were also able to purchase *Natives Bees of NSW* poster, *The Bee Book* (Dorling Kindersley) for the library, and six copies of *Nifty Native Bees* (a Steve Parish Kids Story Book) as classroom resources. The Steve Parish book is supplemented by downloadable worksheets that are great for engaging the kids: <https://www.pascalpress.com.au/content/worksheets/Nifty-Native-Bees.pdf>.

In August/September, we will be holding a working bee to plant some native flowering plants in the school grounds to supplement the bees' existing foraging, which we are told by the City of Sydney's Biodiversity Officer extends to Victoria Park and the University of Sydney. Funding for the plants has been provided by both the Craney Grant and a NSW Teachers Federation tree levy grant.

In Term 4, Glebe Public will host a 'Meet the Bees' event to provide an opportunity for visitors including Glebe Society/Blue Wren Subcommittee guests to meet staff, students and members of the Parents' and Citizens' Association.



Year 1 and Year 3 students from Glebe Public School with the native beehive and books purchased with funds from the Craney Grant (photo: Glebe Public School Parents' and Citizens' Association)

## Community Matters

---

### Forest Lodge School students represent Australia at International Robotics Competition

Pallavi Singhal reported in a *Sydney Morning Herald* article (25 August) that Year 6 students from Forest Lodge School won an Australian robotics competition, enabling them to represent Australia at the World Final Universal Robotics Challenge in Japan. The team was the only primary school team in the competition. The Herald reports: Most of the students had not had lessons in robotics before they entered the competition and their teamwork was a big part of the win, the school's relieving assistant principal Fiona Sannen said. 'They only had two weeks to plan and put the robot together and code it but they had a lot of fun, and that's part of why they won I think, just being really curious and having a vested interest in the robot,' Ms Sannen said. 'We have STEM and STEAM in our classes, it's embedded into the curriculum and we're also teaching a lot of those collaboration and critical thinking skills they need to work together as a team.'



Forest Lodge School's Year 6 students Jett Wilson, Caleb Jeremy, Sirapuk Wateesatogkij and Monty Rooney representing Australia Universal Robotics Challenge in Japan. (photo: supplied)



The robotics which the students took to Japan were a mechanical arm, programmed to move up and down and a mechanical cog that can shoot rubber bands at different angles with the aim of hitting given targets.

Flavia Morello, Glebe Society website content manager and President of Forest Lodge School's P&C, reports that the team competed on 24 August at Osaka University in Japan, and although they didn't place, 'they had a great time and it's been a fantastic experience for the kids.'

No doubt these kids will go on to do great things!

## Kitchen Pack Project Update – Retrospect and Future

In its first 18 months to July 31 2019, the Glebe Society's Kitchen Pack Project provided 35 packs of essential (and mostly refurbished) tableware and cookware to *Elsie* and *Rainbow Lodge* residents when they moved into their new homes. We achieved this total because Glebe Society members and the wider community embraced the project and donated generously. We also had the luxury of a City of Sydney matching grant, to help fund purchases of new jugs and toasters and other new items we needed to cover shortfalls in donations. In fact, though, we bought a far smaller number of new items than expected. There were times when we had shortages, but we relied much more on op-shopping than new purchases to fill the gaps. And now, thanks to a growth in donations, we hold a good to excellent stock of most pack items. This puts the project in a strong position to weather seasonal shortfalls in donations such as occurred last summer. We have clearly established the viability of our project as a socially and environmentally beneficial initiative. It also proved a community-building initiative, strengthening existing relationships and encouraging us to build new ones, most recently with PUG Men's Shed which has begun making the cutting boards for our packs.

While the project has demonstrated value on many counts, there will be changes to ensure it is sustainable. First, with our City of Sydney grant fully expended, we need to rely on internal fund-raising to purchase electrical goods and other new items. Our raffle, to be drawn at the first meeting of the new management committee on 11 September, is the first step in this fundraising. To hold stock to cover seasonal donation shortfalls, we also need more storage space. And with an estimated 30 packs for the coming year, we need extra hands to clean and refurbish donated items and help with packing. In May we began to investigate the use of the St Helen's kitchen twice per month for co-operative cleaning and packing, as well as storage. We hope to have good news on this front by the next all-member email, so keep an eye out.

Finally, please keep the donations coming. At the moment, the items we most need are tumblers and frypans, so please check your cupboards for surplus. For more information on the project and what items go in the packs, see our webpage (<https://www.glebesociety.org.au/about-glebe/community-directory/kitchen-starter-pack-project/>.) Over the next month this page will be re-vamped and will include a regularly up-dated box with a list of items currently most needed. But, as always, we welcome donations of all the items included in packs. The donation drop-off venue remains the Aboriginal Cultural Space at Glebe Town Hall, 10-1pm, 2<sup>nd</sup> and 4th Friday of each month. Or for a pick-up, please call me on 0407207177, or email me at the new address, [kitchenpack@glebesociety.org.au](mailto:kitchenpack@glebesociety.org.au).

Diane Hutchinson  
Kitchen Packs Project Coordinator

### Raffle to raise funds for the Kitchen Starter Pack project

To be drawn 11 September at Management Committee Meeting.

**First Prize:** Original Jenny Coopes Cartoon.

**Second Prize:** Esstele Per vita 5.2 l covered Sauteuse. Stainless steel, copper base, made in Italy. Suitable all cooktops and ovens to 260 degrees.

Tickets: \$10 each or 3 for \$20.

Contact [community@glebesociety.org.au](mailto:community@glebesociety.org.au) or 0401 505 657 or 0407 207 177 to purchase.

## Save The Date! Glebe Youth Service Gala Fundraiser

Celebrating 30 years of service to the Glebe community.

When: 3 October 2019, from 6pm

Where: Tramsheds, Forest Lodge

An evening of food, drink, information and speakers

Booking details coming soon. Keep an eye on the GYS website or Facebook page for details <https://glebeyouth.org.au/>; <https://www.facebook.com/Glebe-Youth-Service-Inc-154207308008260/>

## Rotary Event – support the PCYC

Our Police Community Youth Club (PCYC) Glebe/Leichhardt urgently needs a small bus to transport young people at risk to various programs. Come join your Community, Sydney Inner West Rotary and Spring into our Spring Dinner Dance. Champagne on arrival, and canapés under the

stars, followed by a two course gourmet dinner with specially selected table wine and live music. Win the Best Spring Dressed and much more. Come support our youth and make a difference.

Saturday, 21 September, 6.30pm at the Balmain Bowling Club, 156 Darling St, Balmain.

BOOK: \$75 per person and let's party! <https://www.trybooking.com/BEID> OR all donations are welcome <https://www.trybooking.com/BEID> Further information: 0418 602 014.

## Creative Glebe & Forest Lodge

### Players in the Pub


A 2016 production back by popular demand!

**PLAYERS IN THE PUB**  
presents

**WITNESS  
FOR  
AN ALIBI**

directed by **NICHOLAS PAPADEMETRIOU**

<b>C A S T</b>	ALEX BRYANT-SMITH	ALISON CHAMBERS
	CHRISTOPHER DIBB	SUSAN JORDAN
	KIM KNUCKEY	JEROME MEYER
	CASSADY MADDOX	NICHOLAS PAPADEMETRIOU
	ADELE QUEROL	KIM SAVILLE
	ANNIE STAFFORD	PETER TALMACS
	SHAN-REE TAN	JENNIFER WHITE



**WEDNESDAY**  
**18 SEPTEMBER 2019**  
**7PM**  
UPSTAIRS at the  
**TOXTETH HOTEL**  
Cnr GLEBE PT RD & FERRY RD  
GLEBE

**FREE ADMISSION**  
(donation box optional)

KITCHEN OPENS 5 PM  
WEDNESDAY BEER & BURGER SPECIAL \$20  
ORDER EARLY - WE AIM TO START ON TIME

### Calling for entries for the Glebe Art Show

The Glebe Society has long been a supporter of the annual Glebe Art Show.

We are pleased to announce that in recognition of the 50<sup>th</sup> anniversary of the Glebe Society, the Glebe Art Show is matching our sponsorship of the annual *Character of Glebe* prize, making the prize now \$1000.

Aspiring artists are encouraged to submit an artwork that somehow represents Glebe and shows what makes Glebe special. It could be a photo, a painting or some other work on paper. You are only limited by your imagination!

Last year's winner was titled *Juno Jump* and was created by Nicole Eggers. We loved the simplicity and the light-heartedness of this engaging montage of photos.

Entries for the *Character of Glebe* prize are also eligible for other prizes.

To find out more check out the website [www.glebeartshow.org.au](http://www.glebeartshow.org.au)

The Glebe Art Show will be held at the Tramsheds from 24 to 27 October.

Mark the date in your calendar now. It is a show not to be missed.

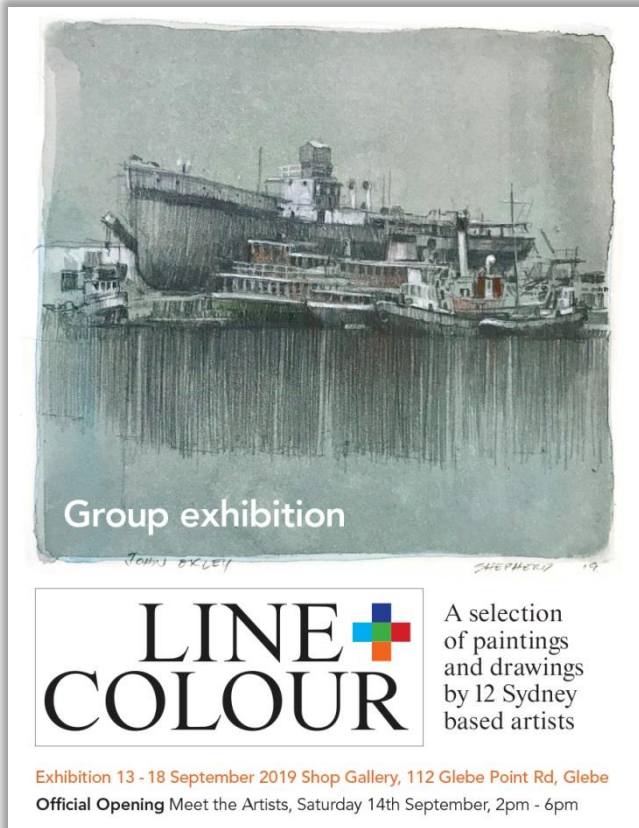


*Character of Glebe Prize winner, Glebe Art Show 2018. Nicole Eggers' Juno Jump. Photomontage, 830 x 440 mm (image: V. Simpson-Young)*



## Shop Gallery exhibition

Rob Shepherd is a Glebe Society member who was one of the designers involved with the Glebe Society Community Festival. Rob is one of the artists exhibiting at the Shop Gallery, 112 Glebe Point Rd on 13-18 September.



## Artisans Market Glebe – Spring Market 14 September 2019

Artisans Market Glebe will be held in Foley Park, Glebe on Saturday 14 September 2019 from 10am to 3pm with more than 60 stallholders. All work is original and nothing is mass produced. Stalls range from fashion and ceramics to jewellery and homewares. One thing you can be certain of is that each piece has been handmade and is in its own way unique.

Now in its fourth year, the market is not to be missed. At this carefully curated market there is a huge range of products to tempt you with a selection of new stallholders at each market.

As well as checking out the goods and talking to the stallholders, you can relax and listen to live music.

Held only every three months this is an opportunity not to be missed.

Foley Park is on the corner of Bridge Rd and Glebe Point Rd. The market will be open from 10am to 3pm.

For more information go to [artisansmarketglebe.org.au](http://artisansmarketglebe.org.au) or [facebook.com/ArtisansMarketGlebe](https://facebook.com/ArtisansMarketGlebe)



*A find from the Glebe Artisans Market (photo: Mike Ody)*

## 30th Annual Glebe Music Festival, 1 to 24 November 2019

Artistic Director: Dr E. David McIntosh AM

[www.glebemusicfestival.com](http://www.glebemusicfestival.com)

Chill out on Friday evening 15 November at 6.30pm (note earlier-than-usual start time) at Gleebooks, 49 Glebe Point Rd, Glebe (tickets all \$10 including food/drinks):

Award-winning Canadian Guitarist Wolf Mail teams up with Australia's queen of soul Milena Barrett, who has been described by Glenn A Baker as 'One of Australia's most talented Blues female vocalists.'

2019 Nominee and finalist of the prestigious International Blues Challenge awards in Memphis, TN the duo has created a not-to-be-missed Soul Blues acoustic musical experience, which brings together old and contemporary in its own unique way. They will perform songs made famous by Aretha Franklin and BB King as well their own material.

Tickets can be purchased in advance at TryBooking: <https://www.trybooking.com/BEAXD>. Or at [www.glebemusicfestival.com](http://www.glebemusicfestival.com). Tickets will also be available at the door.



*Jazz vocalist, Milena Barret, is performing at the Glebe Music Festival (photo: supplied)*

## Big Sing Under the Big Tree

Let's All Come Together

Come and join the Hilda Booler Pre-School annual family picnic; the Glebe Public School choir and community; and the Glebe Community Choir; family and friends. Whole community welcome.

On Sunday 8 September, 11am

At the BIG TREE in Jubilee Park Playground, Federal Rd, Glebe.

Let's sing and connect our *Let's Sing Good Dreaming* Song, under the trees together.

Feel free to bring a plate, (don't have to), have a play. Stay for as long, or as little as you like.

## Glebe Society Events

### Sunset Soirée for Centipede

We would like to invite you to join us on Friday 11 October at 6pm at the Glebe Rowing Club in Ferry Rd for this year's Sunset Soirée for Centipede.

For those who don't know it, Centipede at Glebe Public School is an Out of School Hours Care Centre providing a safe space with enriching play-based learning for children within our diverse community. It aims to provide respite and care for the Glebe community – regardless of circumstances or backgrounds.

The Centipede program includes Before School Care, After School Care and Vacation Care programs, with special additional initiatives such as *The Food Pantry*, Glebe Public School *Breakfast Club*, and *Programs for Children At-Risk*.

This annual event is sponsored by the Glebe Society as part of our Community outreach policy. This year our support is particularly needed because changing circumstances have led to an increase in the number of children attending Centipede, as well as an increased financial contribution required of Centipede for the use of their dedicated premises at Glebe Public School.



So, if you'd like a fun night with live music, an auction of original art works of several different mediums, a multi-prize raffle, a well-known local guest speaker, games, valued door prize, beverages and canapés do come along.

Bookings may be made through Eventbrite ([www.eventbrite.com.au/e/sunset-soiree-for-centipede-tickets-66823513929](http://www.eventbrite.com.au/e/sunset-soiree-for-centipede-tickets-66823513929)), via email at

[community@glebesociety.org.au](mailto:community@glebesociety.org.au) or by phone, 0401 505 657.

Tickets are \$25 which will be credited to your annual membership of Friends of Centipede for guests who join/rejoin this support group.

See you there!

Janice Challinor

Convenor, Community Development Subcommittee

### SAVE THE DATE: 2019 Christmas Gathering

Glebe Society 2019 Christmas Gathering

When: Sunday 8 December 2019 (4-7 pm)

Where: Gardens & surrounds of historic *Rothwell Lodge*, Ferry Rd Glebe

More details in the next *Bulletin*.

### Thirsty Thursday

Glebe Society members and friends are invited to meet in restaurants in and around Glebe, usually on the first Thursday of each month, to eat and talk with other people who live in Glebe.



We try to pick places where we can share dishes, and have eight or so people at each table. Put these details in your diary now.

- On Thursday 5 September at 7pm we will go to *Spicy Sichuan*, 1-9 Glebe Point Rd.
- On Thursday 3 October at 7pm we will go to *Baja Cantina*, 43-45 Glebe Point Rd.
- And on Thursday 7 November at 7pm we will go to *Butcher and the Farmer* at the Tramsheds.

Please email me at [thirstythursday@glebesociety.org.au](mailto:thirstythursday@glebesociety.org.au) or ring me on 9660 7066 by 6pm on the Tuesday before to let me know if you are coming, or if you are likely to be late.

Edwina Doe



## For Your Calendar

Thursday 5 September, 7pm. Thirsty Thursday @ *Spicy Sichuan*, 1-9 Glebe Point Rd.  
 14 September. Artisans Market Glebe – Spring Market. Foley Park.  
 Wednesday 18 September, 7pm. Players in the Pub. Upstairs, Toxteth Hotel.  
 Saturday, 21 September, 6.30pm at the, Rotary Event for the PCYC, Balmain Bowling Club 156 Darling St, Balmain.  
 Thursday 3 October, 7pm Thirsty Thursday @ *Baja Cantina*, 43-45 Glebe Point Rd.  
 Thursday 3 October, 6pm. Glebe Youth Service Gala Fundraiser. Tramsheds Forest Lodge.  
 Friday 11 October, 6-8.30pm. Sunset Soirée for *Centipede*, Glebe Rowing Club.  
 Saturday 12 October, 2 pm. History Walk with Max Solling.  
 Sunday 20 October, 6.45am. *Spring Bird Survey*, Paddy Gray Reserve, contact Judy Christie – 0437 693 372.  
 24 – 27 October, The Glebe Art Show. Tramsheds.  
 1 to 24 November. *30th Annual Glebe Music Festival*, <http://www.glebemusicfestival.com/>.  
 Friday 1 November, 6.30pm. *Nathan Cox @ Glebe Music Festival*. Gleebooks, 49 Glebe Point Rd.  
 Thursday 7 November 7pm Thirsty Thursday@ *Butcher and the Farmer*, Tramsheds,  
 Saturday 23 November, 3pm. *Evgeny Genchev @ Glebe Music Festival*. Glebe Town Hall.  
 Sunday 8 December, 4-7 pm. Glebe Society 2019 Christmas Gathering. Rothwell Lodge, Ferry Rd Glebe.  
 2nd & 4th Friday of the month, 10am-1pm. *Sewing 4 Good, Kitchen Starter Pack drop-off*, Aboriginal Space, Glebe Town Hall.



## Glebe Society Inc. Established 1969

### Management Committee

President	Brian Fuller	0409 035 418	president@glebesociety.org.au
Vice President	Mark Stapleton	0417 238 158	vicepresident@glebesociety.org.au
Past President	Verity Firth		pastpresident@glebesociety.org.au
Secretary	Jude Paul	0438 600 882	secretary@glebesociety.org.au
Minutes Secretary	Mark Stapleton	0417 238 158	minutes@glebesociety.org.au
Treasurer	Jane Gatwood	0488 118 355	treasurer@glebesociety.org.au
Ordinary member	Dorothy Davis	0417 240 603	dorothy@glebesociety.org.au
Ordinary member	Ted McKeown	02 9660 3917	ted@glebesociety.org.au
Ordinary member	Michael Morrison		michael@glebesociety.org.au
Ordinary member	Robert Hannan	0423 111 365	robert@glebesociety.org.au
Bays & Foreshores	Lesley Lynch	02 9660 5084	bays@glebesociety.org.au
Blue Wrens	Andrew Wood	02 9660 6104	bluewrens@glebesociety.org.au
Communications	Virginia Simpson-Young	0402 153 074	communications@glebesociety.org.au
Community	Janice Challinor	0401 505 657	community@glebesociety.org.au
Environment	Asa Wahlquist	02 9660 8261	environment@glebesociety.org.au
Heritage	Brian Fuller	0409 035 418	heritage@glebesociety.org.au
Planning	Neil Macindoe	02 9660 0208	planning@glebesociety.org.au
Transport & Traffic	Janet Wahlquist		transport@glebesociety.org.au

### Working Groups & Contacts

Glebe Island Bridge	<i>Vacant</i>		transport@glebesociety.org.au
Archivist	Lyn Milton	02 9660 7930	milton.lyn@gmail.com
<i>Bulletin</i> Editor	Virginia Simpson-Young	0402 153 074	editor@glebesociety.org.au
Events	Judy Vergison	0417 446 425	events@glebesociety.org.au
Local History	Lyn Collingwood	02 9660 5817	history@glebesociety.org.au
History of Glebe	Max Solling	02 9660 1160	
Glebe Voices	Fiona Campbell	02 9660 0185	glebevoices@glebesociety.org.au
Thirsty Thursdays	Edwina Doe	02 9660 7066	thirstythursday@glebesociety.org.au
Web content	Flavia Morello		webmaster@glebesociety.org.au
Website technical	Peter Thorogood	0404 801 947	support@glebesociety.org.au
Facebook	Virginia Simpson-Young	0402 153 074	facebook@glebesociety.org.au
Twitterer			twitter@glebesociety.org.au

## Highlights this Issue

GLEBE SOCIETY 50 <sup>TH</sup> ANNUAL GENERAL MEETING .....	1
ANNUAL REPORTS FROM THE GLEBE SOCIETY SUBCOMMITTEES .....	3
HISTORY & HERITAGE: MYSTERY PHOTOS.....	12
WHO LIVED IN YOUR STREET? BY LYN COLLINGWOOD: ERNEST PEDERSEN (1910-74) .....	13
BACK BY POPULAR DEMAND! A GLEBE WALK WITH MAX SOLLING; POSITION VACANT .....	14
PENDRILL STREET, GLEBE: THE STORY BEHIND THE NAME, BY RODNEY HAMMETT .....	15
GLEBE, NATURALLY: 2018 CRANEY GRANT REPORT: 'GLEBE PUBLIC HAS A NATIVE BEE BUZZ' .....	16
COMMUNITY MATTERS: FOREST LODGE SCHOOL STUDENTS REPRESENT AUSTRALIA AT INTERNATIONAL ROBOTICS COMPETITION .....	16
KITCHEN PACK PROJECT UPDATE – RETROSPECT AND FUTURE; SAVE THE DATE! GLEBE YOUTH SERVICE GALA FUNDRAISER.....	17
ROTARY EVENT – SUPPORT THE PCYC.....	17
CREATIVE GLEBE & FOREST LODGE: PLAYERS IN THE PUB; CALLING FOR ENTRIES FOR THE GLEBE ART SHOW .....	18
SHOP GALLERY EXHIBITION; ARTISANS MARKET GLEBE; 30TH ANNUAL GLEBE MUSIC FESTIVAL .....	19
BIG SING UNDER THE BIG TREE .....	20
GLEBE SOCIETY EVENTS; SUNSET SOIRÉE FOR CENTIPEDE; 2019 CHRISTMAS GATHERING; THIRSTY THURSDAY .....	20



PO Box 100 GLEBE NSW 2037 No 7 of 2019 (September 2019)

### Membership of the Glebe Society

- Individual member: \$45
- Joint (2 people, one address): \$55
- Household: \$60
- Concession (student or pensioner): \$20
- Institution or corporate: \$110

### How to join

- Join online: complete the Membership Application on our website under 'Membership'
- Download a membership form from [www.glebesociety.org.au](http://www.glebesociety.org.au); or
- Write to the Secretary at PO Box 100 Glebe 2037; or  
Email [secretary@glebesociety.org.au](mailto:secretary@glebesociety.org.au)



*Walter Burley Griffin incinerator (year and source unknown)*

Views expressed in this *Bulletin* are not necessarily those of the Glebe Society Inc. Articles and photos submitted for any of the Glebe Society's publications, including the website and *Bulletin*, may also be used in the Glebe Society's other publications.