



Minister must keep Blackwattle Bay a safe place for passive boating

By Åsa Wahlquist

Glebe Society member (and Environment subcommittee convenor) Åsa Wahlquist has written to the NSW Minister for Planning, Anthony Roberts, about NSW Roads and Maritime Services' (RMS) plans for the Sydney Heritage Fleet facility at Bank St, Pyrmont. The plans can be viewed at: http://www.majorprojects.planning.nsw.gov.au/index.pl?action=view_job&job_id=8338.

Although Åsa's letter is not written on behalf of the Glebe Society, it addresses serious concerns that are likely to be of great interest to our members.

Dear Minister,

Re: MP 11 0001, Maritime facility (former Sydney Heritage Fleet) – Modification 3

I am writing to object to the proposed modification to the Sydney Heritage Fleet facility at Bank St, Pyrmont. I ask that the State Government honour its promise, made through consultation on the Bays Precinct, to turn the site into open space that would enable passive recreation of the Bays.

The proposed modification is misnamed. It is an entirely new proposal.

Not only has Blackwattle Bay Marina failed to fulfil the conditions of its lease, the current BBM site consists of decrepit containers and a demountable office building, with rubbish strewn about the site. ... Surely these are grounds to terminate the lease, not move it to a prime position where it would be a detriment to the Bay and the local community.

I object on a number of grounds including lack of transparency and consultation; alienation of public land for private benefit; the compromised nature of the promised waterfront walkway; the

increased noise, pollution and water turbulence; and the increased risk to passive water users.

I have lived 150 metres from Blackwattle Bay for the past 35 years. Over the decades I have seen waterfront industrial sites shut down and replaced with waterfront parks and walkways around the Glebe side of Blackwattle Bay. The Bay has become more accessible, the parks and walking path are very well utilised and they are a great asset to the local community and to visitors.



One of the vessels in the Sydney Heritage Fleet, the James Craig, under sail in May 2012 (image: Wikimedia)

I also have a strong interest in the history of sailing of open boats, or skiffs, in the region and in the maritime history of the Bays, particularly wooden boat building.

I am the author of 'Snails Bay Sabot Sailing Club, 1962-1973, a sailing club for children in Balmain', and a booklet on the first woman skiff skipper on Sydney Harbour, Irene Pritchard, for Balmain Sailing Club (<http://asawahlquist.com/?p=316>). I currently have a grant from the Inner-West Council to

research and write a book about the history of open-boat sailing in Balmain, which includes the waters of Rozelle and Blackwattle Bays. I am also a keen sailor.

There are very few bays in Sydney Harbour where passive boating, such as sailing, rowing, dragon boating and canoeing, can be undertaken in safety. Blackwattle Bay has historically been one of the few bays in Sydney Harbour that has provided a comparatively safe space. It is currently zoned for passive recreation. It is home to Glebe Rowing Club, which has been there since 1879, the third oldest rowing club in the country. Dragon boats have a base on Bank St, while others are based at the Blackwattle Campus of the Sydney Secondary College. A number of locals go canoeing in the Bay. It is a common sight to see a number of rowing boats, dragon boats, canoes and tenders (the small dinghies used by moored yachts) on the water at Blackwattle Bay.

It must be maintained as a safe place for passive boating.

The proposed Sydney Heritage Fleet (SHF) development at Banks St was in keeping with the maritime heritage of the area. It would have provided a public museum, a community space, heritage boat restoration workshops, as well as berths for 12 boats, which would only be used occasionally.

Frankly, it is hard to know where to begin in objecting to the proposal to move Blackwattle Bay Marina Pty. Ltd. (BBM), which operates All Occasion Cruises

Blackwattle Bay Marina's history

The lease for the site was granted in 2010. NSW Maritime (now part of Roads and Maritime Services NSW) then owned all the dry land at the southern end of Blackwattle Bay. According to the NSW Maritime Annual Report 2010 a request for proposals for 'the redevelopment and long-term lease for most of the site for maritime industry use' was completed in July 2009.

The Report said:

Letter to the editor

Dear Virginia,

I would like to reinforce my appreciation of The Glebe Society's generous contribution to the Glebe Art Show and its support for local artists. It was of course a great surprise to be the lucky beneficiary of the prize this year, but more than

On 6 May 2010, both an Agreement to Lease and an Access and Works Licence were signed with Blackwattle Bay Marina Pty Ltd to carry out a \$26 million redevelopment of the site under a 35-year lease. The redevelopment will include:

- *A new permanent charter vessel facility which will contain berthing space for a minimum of 18 vessels together with a two-storey building for storage and charter vessel operational support*
- *Reconstruction of the former coal bunker wharf and its redevelopment into a three-storey maritime commercial/retail building that will incorporate many historic features of the site*
- *Foreshore access along the development which will also feature a new over-water pedestrian link to the Sydney Fish Market.*

Blackwattle Bay Marina expects to lodge a development application with the consent authority in 2011. The precinct will be progressively opened in three stages and is expected to be fully operational by the end of 2014.¹

It is now three years since the date at which it was expected to be fully operational. There is no two-storey building for operational support, no three-storey commercial retail building, no over-water pedestrian link. Blackwattle Bay Marina Pty. Ltd has not honoured the terms of its lease, as outlined in the Annual Report.

Not only has BBM failed to fulfil the conditions of its lease, the current BBM site consists of decrepit containers and a demountable office building, with rubbish strewn about the site. I enclose a recent photo of their site.

Surely these are grounds to terminate the lease, not move it to a prime position where it would be a detriment to the Bay and the local community.

Continued next page

that, the Society's role in contributing to local events such as this is of great value in encouraging participation by the community and in highlighting the role of the Society.

In appreciation,

Vicky Marquis

The lease was also made under circumstances that raise a number of questions. Several of the key individuals, including then Chief Executive of NSW Maritime, Steve Dunn, and then Ports Minister Joe Tripodi, have been found to have acted corruptly in other contexts, as outlined in this report from the *Sydney Morning Herald*, published November 7, 2016:

A \$250 million plan by the NSW government to build a new Sydney Fish Market may deliver a windfall to an associate of the family of corrupt former Labor powerbroker Eddie Obeid.

[BBM principal] Joe Elias, a friend of Mr Obeid's son Eddie Obeid jnr, is locked in negotiations with the Roads and Maritime Services (RMS) about surrendering a lease on land the government needs for the development....

Mr Elias was controversially awarded a tender to redevelop the [Bridge Rd] site into a marina in 2009 by then Labor ports minister Joe Tripodi.

In August 2009, Mr Tripodi announced that Mr Elias had won the \$15 million to \$20 million tender for a maritime development on the Blackwattle Bay site.

A two-stage tender process had been recommended, but NSW Maritime's then chief executive Steve Dunn dismissed all other bidders, including major property developer Lend Lease, after the first stage and declared All Occasion Cruises the winner.

The Elias bid was higher than its competitors, but partly because it included a non-conforming function centre.

Since then, and in an unrelated matter, Mr Dunn was found to have acted corruptly by scrapping a policy that would have put the Obeid family's Circular Quay leases out to competitive tender.

Mr Tripodi, who appointed Mr Dunn to his position at NSW Maritime at the behest of Mr Obeid, was also found to be corrupt.²

The Banks St site

The Banks St site is a rare thing in Sydney in 2017 – undeveloped waterfront land. Under the Bays Precinct planning, the consensus was that this site should be used for public benefit, to provide public open space and recreation opportunities. The promise was that the public would be consulted on the development of the

site, a promise that was honoured by the SHF, but not under the current modification.

The area is currently used by dragon boaters. At a public meeting on the development, held in Pyrmont on July 24, the CEO of Dragon Boats NSW, Glenn Tasker, said the development would not just affect the local dragon boat community, but it would hurt dragon boating in Australia.



The Blackwattle Bay Marina site at Bridge Rd as it stands today. More a slum than an appropriate development for its prime harbourside position. (image: Åsa Wahlquist)

The move

The move to Banks St was prompted by the State Government decision to move the Sydney Fish Markets to the BBM site on Bridge Rd. I object strongly to this move, the selling or leasing of government-owned land and the development of over 2,700 units in an area that is already poorly served by transport and community services.

Pyrmont is one of the most densely populated areas in Australia, with very limited open space. In 2013 Roads and Maritime Services promised to transfer the site to the City of Sydney for a park, and UrbanGrowth promised it would be a public recreation area. The move of BBM to Banks St dishonours these promises.

MP 11_0001 Maritime facility (former Sydney Heritage Fleet) – Modification 3 is an audacious and unprincipled act. BBM could hardly be a more different operation than the SHF. One of the most succinct comments made at the public meeting on July 24, by a local resident, was that Sydney had a world-class harbour, but the BBM site was more like something from the third world.

The significant and unacceptable differences between the original proposal and Mod 3

The SHF proposal was to construct a public museum. BBM, a private business, appears

committed only to moving its collection of ageing shipping containers and its demountable.

The SHF site would have operated within standard office hours, with some weekend activity, and occasional boat use. The BBM site will operate from 7am to 1am, seven days a week.

The SHF planned to have 12 boats. BBM will have 22 boats ranging from 15 to 48 metres long.

The application admits the number of boat movements under BBM would be greater, and 'regular and frequent ... unlike the approved SHF museum use'.

Other problems

The BBM site will have a sewage pump-out facility. There was no such facility under the SHF plan. It will also store up to 50 empty and full gas bottles (used for barbecues on the boats) on site.

There will be food and beverage deliveries up to six times a week (two for drinks, four for food and perishables).

Garbage from the cruise boats will accumulate on the site, and be collected just once a week for 11 months of the year, and twice a week in December.

In addition under the BBM proposal the site will generate noise through the handling of vessels (noise carries well across water) and the disposal of garbage, particularly bottles, and the handling of gas bottles.

The current site, on Bridge Rd, is well away from housing. The Banks St site is close to a large residential population. In addition the location, under the Anzac Bridge, could lead to an amplification of noise.

BBM's current site has parking for 80 cars, the proposed will have parking for only two cars. How will the other workers travel to it?

Although the Environmental Impact Statement states there will be no passenger access at the site, the Plan of Management allows for signage 'on the wharves and at the promenade level of the gangways to assist the public and patrons in embarking and disembarking from the vessels'.

Currently, BBM's boats enter the Bay and turn south to berth at the Bridge Rd facility. But manoeuvring large boats to berth adjacent to the

entry of Blackwattle Bay will require more movements, including the use of bow thrusters, creating engine noise and associated turbulence. The movements will also place passive boaters at risk, as well as creating wash that will impact the sea wall of the Bay and on Glebe Island Bridge.

The proposed timber walkway is severely compromised, and not just because it is too narrow and away from the waterfront. What should be a wonderful Harbourside walk will pass a collection of decrepit shipping containers, rubbish and the sewage pump out facility.

The statement that this will only be in place for 10 years cannot be trusted. The Sydney Superyacht Marina in Rozelle Bay was supposed to provide temporary accommodation for just 15 superyachts for the duration of the Sydney Olympics in the year 2000. Last year the company announced a \$30 million investment to increase the number of berths to 43, and to 'create an exclusive yacht club, several new eateries and 7,000 square metres of retail and commercial space'.³

Finally, what is the point of building a beautiful new fish market, designed by world-class architects, when the view down the Bay will be of BBM's collection of ageing containers and its fleet, with its visual and noise pollution.

The proposed modification must be rejected

It will not enhance the Bay, or benefit the local community and visitors. The process has been appalling. The community's aspirations for the Bay have been ignored. In place of the open public space and access to the waters of the Bay that the community desires, the proposal will move a business that has failed to honour its lease conditions and which currently operates on a site that can best be described as an eyesore, onto prime publicly-owned land.

I urge you to support the community, and instead turn the Banks St site into an accessible waterfront park.

Yours sincerely,

Åsa Wahlquist

1. <http://www.rms.nsw.gov.au/documents/about/corporatepublications/nsw-maritime-annual-report-2010.pdf> (pages 31, 32);

2. <http://www.smh.com.au/nsw/obed-family-associate-joe-elias-in-line-for-sydney-fish-market-windfall-20161107-gsjmrw.html>

3. <https://www.yachtcharterfleet.com/news/sydneys-superyacht-marina-confirms-dollar30m-development-6331.htm>

History & Heritage

Who lived in these houses? Victoria Rd – the first owners and occupants. By Rodney Hammett



Source: <http://maps.six.nsw.gov.au/>

Victoria Rd, now widely known to residents and visitors alike due to the Jubilee stop on the Light Rail and the access to the Tramsheds, was created in the subdivision by George Boyce Allen in the period 1894-96 (south side) and 1902 (north side).¹

The street's elevated proximity to Jubilee Park and Oval was an attraction. However from 1922 the goods line to Darling Harbour with steam engines became operational following a four year construction period. The Glebe tunnel has been discussed in the *Bulletin* previously.² Tenders for the manufacture and supply of stonework for the viaduct over Jubilee Park were called in November 1918.³ Goods traffic ceased in January 1996.⁴



The park was also a place for entertainment – as exemplified by the advertisement in *The Sun* of Friday 6 Feb 1920.

Architect **Edward Rumsey** was 73 years old and four years into retirement⁵ when he purchased No 2, the first lot to be sold.

The son of Nathaniel and Lavinia, he married Octavia Yockey in the St Pancras Parish Church, London on 1 August 1848 then immigrated to Melbourne with two children, arriving in December 1853.⁶

In Melbourne Edward continued his architectural career winning in 1858 first prize for the plans of arrangements in the new Melbourne GPO.⁷

House No	Purchased	Purchaser
2	2 Nov 1897	Edward Rumsey of Summer Hill, gentleman
4	6 Sep 1901	Henry Gibbons of Leichhardt, builder
6= 8	20 Aug 1902	Charles Albert Muller of Sydney, physician and surgeon
10	31 Jan 1903	Charles Albert Muller of Sydney, physician and surgeon
12	15 Aug 1904	Charles Albert Muller of Sydney, physician and surgeon
14- 24	6 Nov 1911	Emma Louisa Rogers of Newtown, widow
26- 32	6 Oct 1911	Anne Jane McMahon of The Glebe, spinster
34- 44	6 Apr 1914	James Alexander Brodie of Balmain, gentleman
3	24 Apr 1906	Henry Beeson of Turramurra, builder
5	30 Apr 1910	Eugene Augustine Boyle of Glebe Point, civil servant

Also No 1 Alexandra Lane purchased by George Roberts of Annandale, salesman on 30 Apr 1906.

Source: *Certificates of Title*

With an expanded family now living in Sydney, 1873 was a year for Edward Rumsey to remember. In May he was appointed Clerk of Works in the Government Architect's Branch⁸; in June he applied unsuccessfully for the position of City Architect⁹ but did in the same year receive acclaim for his architectural drawings from the NSW Academy of Art.¹⁰ At this time the family was living at 513 Crown St.

There were two daughters and four sons, the youngest of which, James Herbert, became the owner of No2 in January 1898 living there with his family. Following his early death aged 43 in 1903 the ownership transferred to his wife Grace. She remained the owner for 11 years but didn't live there.

Edward died in September 1909 aged 85. The original house no longer exists replaced by a block of units possibly in the 1960s.

Henry Gibbons (1857-1939) born at Bethnal Green, London, married Mary Jane Landsbury in

Sydney in 1879. The son of Phillip a silk warehouseman then tailor, and Sarah he was one of nine children and only 10 when his mother died. Travelling alone Henry possibly arrived in Sydney via Queensland in 1875.

Sands Directory records show him living at 37 Elswick St, Leichhardt, occupation carpenter, from the mid 1880s until about 1905.

Henry was the owner of No 4 for only 3 months before he sold it to Margaret Muller, the wife of Charles and purchaser of Nos 6-12. Was it because Henry was having cash flow problems? Payment was stopped on one of his cheques in March 1903.¹¹

These troubles were behind him by May 1908 when Henry, now a builder of Stanmore, purchased two lots at Smith St, Manly. Here he created three lots where he built the family house and two others for his children. A builder in the expanding nearby suburbs until late in his life Henry died aged 81 in 1939.

Henry and Mary had five daughters and two sons. Henry, the oldest son, was also a carpenter.

Charles Albert Muller (1866-1932), born in Toowoomba in Queensland, became a registered medical practitioner in NSW in August 1891, having graduated from Melbourne University in 1889.¹² By 1900 he went under the title of Physician and Surgeon and was living at 263 Elizabeth St, Sydney.

The purchase of Nos 6-12 and subsequently No 4 by his wife Margaret between 1901 and 1904 may not have been a financial success. The Railway Commissioners for NSW acquired these lots in May 1918 for the construction of the goods line so it is likely no dwellings were allowed to be constructed on the lots until after the goods line was completed.

Whether it was to get away from this complication we will never know, but what we do know is that Charles and Margaret travelled to Honolulu on the ship *Makura* for a holiday in March and April 1913.¹³ Also memorable was the cyclone they encountered soon after leaving Sydney.¹⁴

Charles was house surgeon at St Vincent's Hospital, Sydney 1891-93 then entered private practice but remained an honorary surgeon for over 15 years.¹⁵ He had three sons, Raymond, Harold and Charles. Margaret predeceased him in 1931. Charles died in September 1932 aged 66. His estate was valued at £16,474 4s 0d.

Widow **Emma Louisa Rogers** (1873-1949) purchased Nos 14-24 in 1911, soon after her husband Robert had died.

Robert and Emma, born respectively in Forest Lodge and Redfern, had married at St Stephens, Newtown in May 1894 then had two daughters and a son. Together they operated the Town Hall Hotel at 333 King St, Newtown he also being the proprietor of Wilce's cordial factory, Newtown.¹⁶

Robert died aged only 31 in March 1909 so his entrepreneurial talents had not had time to bear fruit. It was Emma, daughter of designer Joseph Morelli and Elizabeth Maybury who in the next 40 years amassed a sizeable number of assets.

When she died aged 75 in February 1949, her estate was valued at £15, 489 1s 1d. Robert's had been valued at £874 17s 0d with debts of £1,055 10s 2d.



Emma Rogers
(Source:
Ancestry.com)

Emma sold the row of six terraces to George Fischer of London, an export buyer, in June 1914.

James Alexander Brodie, a successful businessman, hotel owner, landowner and in 1891 Mayor of Balmain, purchased Nos 34-44 in 1914 then arranged for the existing row of six terraces to be

constructed. James died in 1916 aged 74 at which time the properties were transferred to his sons Gordon and Malcolm.

When they were offered for sale to investors in 1920 the returns were stated as 2s 6d per week each or £300 per annum¹⁷.

Annie Jane McMahon (1865-1945) was the youngest of eight children born to Terence McMahon and Annie (nee Jennings), both born in Ireland. The family lived at 40 Upper Fort St, Sydney from the 1850s until Annie's mother died in 1884. Terence was a Shipping Officer attached to the General Post Office. This at the time was an important role as in 1855 a number of the merchants of Sydney gave him a testimonial of 'a massive gold watch and a purse of 80 sovereigns'¹⁸. Terence retired in 1868 and died in 1870 aged 50.

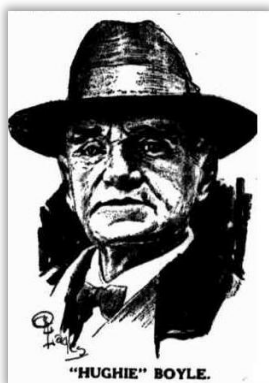
When Annie bought Nos 26-32 in 1911 she was already a resident and had been a landowner in Glebe since 1909. She lived close by at No 1 Alexandra Rd with her brother William. The year

after William died Annie, now 50, married Patrick Joseph McNamara in September 1916.

Annie died aged 79 in 1945 while still living at 1 Alexandra Rd. The Victoria Rd properties were sold after she died.

Builder **Henry Beeson** would have built No3 between April 1907 and December 1909 when he sold to Herbert Henry Cush, a manager of Annandale. Henry built a number of houses in Alexandra Rd, Allen St, Arcadia Rd, Avenue Rd and Wigram Rd between 1890 and 1910. See also details in The Glebe Society *Bulletin* Issue 4 of 2017.

Eugene Augustine Boyle (1859- 1932) was appointed a clerk in the NSW Public Service in June 1878¹⁹. Born in Ireland to Eugene and Isabella (née O'Brien) the family arrived in Sydney on 27 March 1864, eventually living in Annandale.



Eugene Augustine Boyle (Source: Truth; Sun 8 Jul 1928, p6)

Eugene Jnr married Elizabeth Mozelle in 1886. Sands Directory records suggest they were living in one of the Edith Cottages, Darling St in 1890 and by 1900 they were living at 61 Boyce St. Two daughters and three sons had been born by 1906, however only Hilda and Archibald survived to adulthood. Hilda became an operatic soprano travelling widely including overseas. Archibald became a solicitor living in Bellevue Hill where he died in 1984 aged 85.

Working in the Sales Division of the Department of Lands Eugene would have known of developments in Glebe. In 1897 his salary was £225 per annum rising to £365 by 1921. He purchased No 5 in 1911 then lived in the new house until it was sold in 1925 when the family relocated to Bellevue Hill Rd, Bellevue Hill.

In his spare time 'Hughie', as he was known to the keen billiard players in Sydney, was the State amateur champion in 1882 and 1883. For over 21 years he was the honorary secretary of the NSW Billiards Association. He died in 1932 aged 73.

Little is currently known about **George Roberts**. He lived in Annandale at Young St and Wells St from 1897 to 1906 after which details have not been found.

No 1 Alexandra Lane was sold to William Stone (of Waratah Stoves fame) in 1910 then retained by the Stone family until at least 1960.

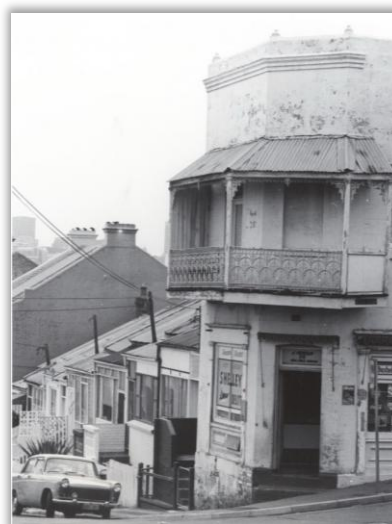
Rodney Hammett

Sources: ¹ Land & Property Information; Certificates of Title 1133-182, 1181-18 & 1432-9. ² 'Who lived in your street?' by Lyn Collingwood: 1 Allen St and the Glebe railway tunnel (Glebe Society Bulletin Issue 5 of 2016). ³ SMH; Wed 27 Nov 1918, p9 [Tenders]. ⁴ Lost Railways: Metropolitan goods line (Source: <http://www.visitsydneyaustralia.com.au>). ⁵ Ancestry.com; New South Wales, Australia, Government Gazettes, 1853-1899. ⁶ Ancestry.com; Victoria, Australia, Assisted and Unassisted Passenger Lists, 1839-1923. ⁷ SMH; Wed 19 May 1858, p10 [Post Office Designs]. ⁸ Ancestry.com; New South Wales, Australia, Public Service Lists, 1858-1960. ⁹ SMH; Tue 17 Jun 1873, p5 [Municipal Council of Sydney]. ¹⁰ SMH; Thu 17 Apr 1873, p5. ¹¹ SMH; Tue 3 Mar 1903, p2. ¹² NSW Government Gazette; Supplement, dated 9 Jan 1894. ¹³ Orange Leader; Mon 14 Apr 1913, p3 [Fire and Cyclone]. ¹⁴ Ancestry.com; Passenger List. ¹⁵ SMH; Fri 23 Sep 1932, p10 [Obit]. ¹⁶ Evening News; Mon 5 Feb 1906, p3 [Troublesome Dealer]. ¹⁷ SMH; Wed 21 Jan 1920, p4 [Advertising]. ¹⁸ Empire; Sat 10 Feb 1855, p4 [Testimonial]. ¹⁹ Ancestry.com; NSW Public Service Lists.

Mystery photo



Last month's mystery house is 8 Leichhardt St, once owned by kite-maker and swimsuit designer Peter Travis. The fibro cladding has been removed to reveal the double-storey stone facade, and the unkempt garden has been replaced by a lawn and tended shrubs. Originally *Leichhardt Lodge*, it had been christened *Glebe Lodge* by the 1970s when this photo was taken.



This month's puzzle: Where's this building? Email your suggestions to heritage@glebe.society.org.au.

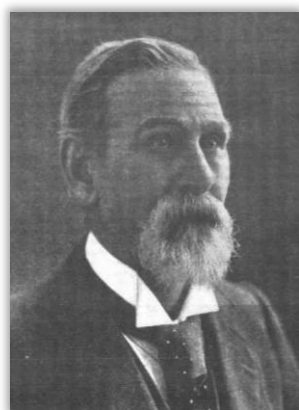
Lyn Collingwood

Who lived in your street? by Lyn Collingwood Thomas Harris (1831- 1906) and Eva Elizabeth Harris (1869-1952) Rainford

After his touring days were over, opera singer Thomas Rainford lived in Glebe until his death. His daughter Eva also had a long association with the suburb.

Born in Leicester, England, Thomas was reputed to have swum ashore after being shipwrecked as a young man off the African coast, and to have sung five times before Queen Victoria. In 1863 he arrived in Melbourne with Christy's Minstrels, a blackface troupe (his numbers included *My Home in Kentuck [sic]* and *Poor Old Jeff*). Deciding to stay in Australia, he then performed with Frank Weston's Minstrels and Frank Hussey's Minstrels and in 1868 sang in a concert for the visiting Duke of Edinburgh.

In 1870 Rainford was stage manager and solo performer at Melbourne's Theatre Comique and consolidated his reputation as an audience favourite. The next year he was given special billing with moving panoramas staged in Victorian gold rush towns. A precursor of cinema, the panorama was a series of elaborately painted scenes rolled out on stage accompanied by spoken commentary, musical interludes and the occasional theatrical effect such as the sudden transformation of day to night or the blowing up of a bridge. Rainford created mood changes for *The Franco-Prussian War* with his renditions of *The Watch on the Rhine*, *La Parisienne* and *My Loved and Native Home*.



Tom Rainford (Image: *The Sydney Mail and NSW Advertiser* 29 July 1899)

By 1873 Rainford was concentrating on opera. He received glowing reviews as Count Arnheim in the English Opera Troupe's *The Bohemian Girl*. As principal basso with William Saurin Lyster's company his repertoire of 16 works included *Faust* (Mephistopheles) and *The Grand Duchess* (General Boum). In 1874 he toured with visiting pianist Mme Arabella

Goddard. The next year he sang with Mme Christian (who taught a teenaged Melba) and with Croatian soprano Ilma de Murska on her Australian tour, and joined Alice May's opera

company which toured India (in Calcutta he sang before the Prince of Wales). Thomas Rainford also went to China with Howard Vernon's company. In comic opera his most celebrated role was Dick Deadeye in *HMS Pinafore* with Maggie Moore as Josephine. His last stage appearance was in this part, at Sydney's Theatre Royal. Rainford was also a composer and arranger. Among his known works are a song *Christmas Bells* (1894) and the piano music for *Beneath the Southern Cross* (1888).

By January 1879 when he sang at the NSW Highland Society's celebration of Robert Burns' birthday, Tom Rainford was living permanently in Sydney. For the next two years he was landlord of the Forest Lodge Hotel where he hosted meetings of the Derwent Cricket Club and the Glebe Cricket Association. In June 1880 his brother-in-law Henry Charles Farley, a wealthy Queensland gold prospector, was staying at the hotel but failed to return after a night out. Farley died after being found unconscious on a Newtown street, minus his £60 watch ripped from its chain and pawned by an opportunistic thief.

Rainford moved from Forest Lodge into the newly built *Palmerston Terrace*. Here his wife Marian Jane 'Jennie' (born at Whitstable, Kent, 39 years earlier) died on Boxing Day 1887.

After giving up his professional singing career, Rainford became a music teacher. At the time of his death on 9 November 1906 his address was *Doreen*, 168 (now 204) Glebe Rd. *The Long Day Closes* was sung at his funeral service at St John's Glebe where he had been an occasional choir member. He was buried in Waverley Cemetery with his wife and brother-in-law.

Thomas' daughter Eva was born on 1 April 1869 and christened at Richmond, Victoria. After her father's death she remained at *Doreen* with the house's other occupants William Henry Webb and his daughter Madeline Lilian 'Lily', a masseuse.

William Webb, who had migrated from England in 1867, was assistant secretary, librarian and bookkeeper with the NSW Royal Society, and for 25 years honorary treasurer of St Barnabas' Sunday School. He died at *Doreen* on 29 August 1916, survived by Lily and his married daughter Florence Emily, then living at Bathurst, and was

buried in Waverley Cemetery with his wife Emily who had died, aged 33, on 12 October 1881.



Eva Rainford's home, 12 Toxteth Rd (image: Phil Young)

A supporter of the Wentworth Free Kindergarten, Eva Rainford during the First World War ran patriotic concerts at Glebe Town Hall in aid of the Belgian Fund and the Red Cross, organised a Christmas gift evening in the Record Reign Hall for the 5th Field Artillery, and was treasurer of the 45-member Glebe branch of the Red Cross (not formed until the war was near its

end). With other volunteers she sold buttons on Red Cross Day, and became a Commandant with the VAD (Voluntary Aid Detachment).

Eva and Lily remained at *Doreen* until 1920 when they both moved to 12 Toxteth Rd, Eva's address at the time of her death on 11 February 1952. Unmarried, she was buried in the family grave at Waverley Cemetery.

In 1952 the Toxteth Rd house was bought by Jack Stitt who lived there for over six decades until his death. An employee and union organiser at the Max Factor cosmetics factory (now Sydney University's *Woolcock* building), Jack was a renowned collector of boxing memorabilia. The story of his acquisition of Les Darcy's sparring gloves was the subject of an article in the *Melbourne Age* on 1 July 2009.

Lyn Collingwood
Historian

Sources: *Argus* (Melbourne) 10.2.1863; *Australian Town and Country Journal* 21.11.1906; *Evening News* 10.11.1906; NSW cemetery records; NSW electoral rolls; NSW registry of births, deaths, marriages; personal information; *Sands Directories*; *Sunday Times* (Sydney) 17.1.1909, 14.4.1918, 30.6.1918; *Sydney Mail and NSW Advertiser* 29.7.1899; *Sydney Morning Herald* various issues including 27.12.1887, 19.12.1890, 19.11.1906.

Glebe, Naturally

Blue Tongue at Orphan School Creek

Here is a blue tongue with my son Vincent at Orphan School Creek. He and his friend Karel came rushing home from Orphan School Creek bush (across the road) screaming that they had seen a snake. I called Judy Christie and she set us straight. The following week Judy noticed it and Vincent introduced himself! How wonderful to have such encounters in Forest Lodge.

Chris Blair



Amateur herpetologist, Vincent Blair, and his friendly neighbourhood Blue Tongue Lizard (image: Chris Blair)

Annual Spring Bird Survey

All members and friends are welcome to attend the Society's fifth annual spring bird survey at 6.45am on Sunday 8 October 2017 commencing in Paddy Gray Reserve, Hereford St. It will be organised by Judy Christie (0437 693 372) and please telephone her if you would like to come. Afterwards, at 8am, we will have breakfast at *Esca*, 333 Glebe Point Rd. Please bring your binoculars, a pen, camera and clipboard (if you have one) and wear walking shoes.

Andrew Wood



The holy grail for the annual spring bird survey – the blue wren (image: City of Sydney)

How WestConnex will affect you

By Jan Wilson, on behalf of StopWestConnex-Glebe Forest Lodge



(Image: Jan Wilson)

We are a group of concerned locals campaigning against the \$17 billion+ WestConnex toll road and for better public and active transport.

WestConnex stage 3 will bring eight lanes of polluting toll road and exhaust stacks to suburbs between Haberfield, Rozelle and St Peters unless we all come together and say 'NO!' Experts agree that building more urban motorways just induces more traffic. We need fast, frequent and efficient public transport to get cars off the road.

We oppose WestConnex because it:

- won't fix congestion
- won't reduce car dependence
- will induce more trips by car
- will delay investment in public transport
- will increase traffic on local roads
- will lead to local road widenings
- will increase toxic air pollution at tunnel entries and exits, and unfiltered exhaust stacks
- will increase truck movements through the inner west to Port Botany

- will create havoc for years during construction
- will increase the tolls you pay by 4% every year
- will increase greenhouse gas emissions contributing to climate change

Stage 3 of WestConnex is not a done deal. It's not too late to stop. Here are some things you can do:

- Sign up here for our email updates at www.westconnex.info/join.
- Make a submission to the Environmental Impact Statement (EIS) for Stage 3 (http://www.majorprojects.planning.nsw.gov.au/index.pl?action=view_job&job_id=7485), open for public comment until 16 October 2017.
- Write to the Premier, Gladys Berejiklian. Demand that work on WestConnex is halted, a public inquiry held, and public transport options be put back on the table. (use the easy form at: www.fixwestconnex.com.au).

Jan Wilson

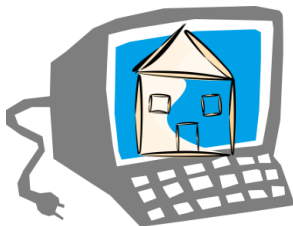
Coordinator, StopWestConnex-Glebe Forest Lodge (email: janwil@bigpond.com to get update information).

Creative & Connected

Glebe Society
Event

How to Research Your House Online

This Glebe Society event is a wonderful opportunity for members (and non-members) to find out a whole lot more about how to research the history of their house online.



A panel of Glebeites who have recently researched their own homes will share their experience and provide useful guidance to neophyte house researchers.

You will learn about using online resources to help answer such questions as:

- What is the architectural style of your property?
- When was your house built and by whom?
- How has the property been used over time – commercial, residential, educational?
- Who owned your house and who lived in it? What did they do for work, who are their family members and their local connections?
- How was the land used prior to it being developed?
- What were the previous land uses? Demolished buildings? Farming, recreational, sporting?
- Where can you find old photos of your house?
- Where can you find historical maps and plans of your street or estate?

When? Saturday 4 November from 11am to 1pm

Where? Main hall, Glebe Town Hall

Cost? \$10 for members; \$30 for non-members, but \$45 if they join on the night, for which they receive 18 months' membership.

Booking and further information: Registration is essential via

<https://www.eventbrite.com.au/e/how-to-research-your-house-online-tickets-38280088776>. If you are unable to book online, please phone Virginia on 0402 153 074, or email her at communications@glebesociety.org.au.

Virginia Simpson-Young

Join us at the next *Our House* event – Rothwell Lodge

Glebe Society Event

A special opportunity for Glebe Society members to be a guest in a wonderful Glebe residence, where the owners generously share the stories of their home and surrounds, while you also enjoy socialising with other Glebe residents.

Robert and Peter have kindly offered to be our hosts for the second *Our House* visit.

Sunday 12 November 2017 2.30-4.00pm

Rothwell Lodge, 24 Ferry Rd Glebe

Tickets: \$20 pp (Includes refreshments and a tasty selection of cheese/sweet treats)

Bookings and pre-payment are essential as numbers are limited. Bookings via <https://www.eventbrite.com.au/e/our-house-tickets-38279178052>. If you can't use the Society's online Eventbrite booking system call Judy M: 0417 446 425.

About Rothwell Lodge, c.1847

One of the earliest surviving houses in Glebe, Rothwell Lodge was built by George Allen for the Methodist minister, Rev William Binnington Boyce who was appointed as general superintendent for Wesleyan Mission in Australia in 1846. Rev Boyce also conducted services at the Toxteth Chapel in the grounds of Toxteth Park. The Boyces and the Allens were related by marriage.

Rothwell Lodge is a two storey house with loft rooms. The ground floor was originally the kitchens and staff quarters but today is a separate dwelling. The middle floor and loft form the main residence.

Rothwell Lodge is adjoined to the south by a two storey building, a former warehouse (c.1890) and more recently an architect's office. It is about to be converted into a spacious two bedroom apartment with city views.

Ernest Pederson Reserve, 20-20a and 22-22a Ferry Rd were once part of the grounds. Rothwell Lodge originally had sweeping views of the city and harbour, a shingle roof and even a milking cow up until 1920. The house is unique in that it has not been built in by inner city units and still borrows the park in front to instil an impression of a time lost.

Judy Vergison. Events Coordinator



Rothwell Lodge, c. 1847 – the location of the Society's next Our House event. (image: propertyobserver.com.au)

Centipede Soiree

Don't forget the annual fundraiser for the Centipede Before and After School Care Centre based at Glebe Public School.



Enjoy drinks and canapés on the verandah of the Glebe Rowing Club as the sun goes down on Blackwattle Bay. Live music and exciting auctions.

The guest speaker is the ABC's Leigh Sales.

When? 6pm, Friday 13 October.

Where? Glebe Rowing Club

Cost? \$25

Bookings & further information?

<https://www.eventbrite.com.au/e/sunset-soiree-for-centipede-tickets-36371590406>. If you cannot book online, please contact me on 0401 505 657; or community@glebesociety.org.au to make alternative arrangements.

Janice Challinor
Convenor, Community Development

Mental Health Month – Meditation station @ Glebe Library

During Mental Health Month this October, each City of Sydney library branch will host a guided meditation station. The meditation stations will have an iPad loaded with self-directed, anti-anxiety meditations from our e-audiobook collection. Sit down and make yourself comfortable for a five minute meditation to slow down your busy day.

Guided meditations are widely recognised as effective strategies for managing anxiety and nurturing positive mental health.

This free meditation activity is suitable for all ages. There's an iPad available at each branch and headphones are provided.

Where? Glebe Library.

When? From Tuesday 3 October to Tuesday 31 October 2017: Hours: Mondays and Wednesdays, 9am to 7pm; Tuesdays, Thursdays and Fridays, 9am to 6pm; Saturdays, 10am to 4pm,

Bookings and more details: <https://whatson.cityofsydney.nsw.gov.au/events/meditation-station-glebe-library>. Bookings aren't required – drop in at any time during library opening hours and see branch staff if you have any questions. Meditations can also be borrowed by Library members from our e-audiobook collection, so you can meditate using your own device, anywhere and any time.

Players in the pub



Spies, Lies & Private Lives
A comic look at espionage
Directed by Richard Cotter

When? 7pm WEDNESDAY 18 October 2017

Where? Upstairs Toxteth Hotel Ferry Rd/Glebe Point Rd Glebe (entry via Ferry Rd stairs)

Cost: Free admission.

The kitchen is open from 5pm. Please order your food early. We always start on time!

Lyn Collingwood

Thirsty Thursday



Glebe Society members and friends are invited to meet in restaurants in and around Glebe, usually on the first Thursday of each month, to eat and talk with other people who live in Glebe.

We try to pick places where we can share dishes, and have eight or so people at each table.

Put these details in your diary now:

- On Thursday 5 October at 7pm we will go to *Despaña*, 101 Glebe Point Rd.
- On Thursday 2 November at 7pm we will go to the Tramsheds, to *Bekya – Middle Eastern Kitchen*, Tramsheds, Forest Lodge.
- And on Thursday 7 December at 7pm we will go to Tommy's Beer Café, 123 Glebe Point Rd,

Please email or ring Edwina on 9660 7066 by 6pm on the Wednesday before to let us know if you are coming, or if you are likely to be late.

Edwina Doe

A few works on the walls of my home, Glebe: Barry Canham exhibition

Barry Canham's next art exhibition runs from 5 to 11 October at the Shop Gallery 112 Glebe Point Rd. Opening hours: noon to 6pm.

On display will be Barry's poems, sculptures and CDs along with paintings and drawings from the 20 years since he attended art school at TAFE Meadowbank (including portraits of friends and fellow artists and musicians such as Jann Rutherford and Joe Lane).

Entering his 80th year, Barry is keeping the prices down. As he says: 'I would like to place a few works on to the walls of my 'home' for 21 years – Glebe', referring to the Gallery in Glebe.

Lyn Collingwood



Sculpture by Barry Canham (image supplied)

For your calendar

Sunday 30 September, 10am. Working bee Orphan School Creek Park, contact Judy Christie 0437 693 372

Thursday 5 October, 7pm. *Thirsty Thursday @ Despaña*, 101 Glebe Point Rd.

Sunday 8 October, 6.45am. *Spring Bird Survey*, Paddy Gray Reserve, Hereford St, contact Judy Christie: 0437 693 372

Friday 13 October, 6-8.30pm. *Sunset Soirée for Centipede*. Glebe Rowing Club.

25 October to 25 November. *Annual Glebe Music Festival*, <http://www.glebemusicfestival.com/>.

Thursday 2 November, 7pm. *Thirsty Thursday @ Bekya Middle Eastern Kitchen*, Tramsheds.

Saturday 4 November, 11am-1pm. *Researching Your House Online*. Glebe Town Hall.

Sunday 12 November, 2.30-4pm. *Our House* – Rothwell House in Ferry Rd.

Sunday 3 December, 5.30-8pm. *Christmas Party*, Glebe Town Hall. Thursday 7 December, 7pm. *Thirsty Thursday @ Tommy's Beer Café*, 123 Glebe Point Rd,

Wednesday mornings from 8.30am. *Glebe Bushcare Group*, near Jubilee Park. Contact Sue – 9692 9161.

Glebe Society Inc. Established 1969

Management Committee

President	Allan Hogan	0411 607 813	president@glebesociety.org.au
Vice President	Diane Hutchinson	0407 207 177	vicepresident@glebesociety.org.au
Past President	Ted McKeown	02 9660 3917	pastpresident@glebesociety.org.au
Secretary	Jude Paul	0438 600 882	secretary@glebesociety.org.au
Minutes Secretary	Jane Gatwood (temp)	0488 118 355	minutes@glebesociety.org.au
Treasurer	Jane Gatwood	0488 118 355	treasurer@glebesociety.org.au
Ordinary member	Nick Hespe	0401 453 992	nick@glebesociety.org.au
Ordinary member	Janet Wahlquist		janet@glebesociety.org.au
Ordinary member	Murray Jewell	0405 921 945	transport@glebesociety.org.au
Ordinary member	(vacancy)		
Bays & Foreshores	Lesley Lynch	02 9660 5084	bays@glebesociety.org.au
Blue Wrens	Andrew Wood	02 9660 6104	bluewrens@glebesociety.org.au
Communications	Virginia Simpson-Young	0402 153 074	communications@glebesociety.org.au
Community	Janice Challinor	0401 505 657	community@glebesociety.org.au
Environment	Asa Wahlquist	02 9660 8261	environment@glebesociety.org.au
Heritage	Ted McKeown	02 9660 3917	heritage@glebesociety.org.au
Planning	Neil Macindoe	02 9660 0208	planning@glebesociety.org.au
Transport & Traffic	Murray Jewell	0405 921 945	transport@glebesociety.org.au

Working Groups & Contacts

Glebe Island Bridge	Murray Jewell	0405 921 945	transport@glebesociety.org.au
Archivist	Lyn Milton	02 9660 7930	milton.lyn@gmail.com
<i>Bulletin</i> Editor	Virginia Simpson-Young	0402 153 074	editor@glebesociety.org.au
Events	Judy Vergison	02 9692 9200	events@glebesociety.org.au
History	Lyn Collingwood	02 9660 5817	lyncol1@optusnet.com.au
History of Glebe	Max Solling	02 9660 1160	
Webmaster	Andrew Botros	0402 112 106	webmaster@glebesociety.org.au
Website technical	Peter Thorogood	0404 801 947	support@glebesociety.org.au
Chief Twit	Allan Hogan	0411 607 813	twitter@glebesociety.org.au

Highlights this Issue

MINISTER MUST KEEP BLACKWATTLE BAY A SAFE PLACE FOR PASSIVE BOATING	1
LETTER TO THE EDITOR	2
WHO LIVED IN THESE HOUSES? VICTORIA RD – THE FIRST OWNERS AND OCCUPANTS	5
MYSTERY PHOTO	7
WHO LIVED IN YOUR STREET? THOMAS HARRIS AND EVA ELIZABETH HARRIS RAINFORD	8
BLUE TONGUE AT ORPHAN SCHOOL CREEK; ANNUAL SPRING BIRD SURVEY	9
HOW WESTCONNEX WILL AFFECT YOU, BY JAN WILSON	10
GLEBE SOCIETY EVENT: HOW TO RESEARCH YOUR HOUSE ONLINE	10
GLEBE SOCIETY EVENT: <i>OUR HOUSE</i> – ROTHWELL LODGE; CENTIPEDE SOIREE	11
MEDITATION STATION @ GLEBE LIBRARY; THIRSTY THURSDAY; PLAYERS IN THE PUB	12
‘A FEW WORKS ON THE WALLS OF MY HOME, GLEBE’: BARRY CANHAM EXHIBITION	12



PO Box 100 GLEBE NSW 2037

No.8 of 2017 (October)

Membership of the Glebe Society

- Individual member: \$45
- Joint (2 people, one address): \$55
- Household: \$60
- Concession (student or pensioner): \$20
- Institution or corporate: \$110

How to join

- Join online: complete the Membership Application on our website under 'Membership'
- Download a membership form from www.glebesociety.org.au; or
- Write to the Secretary at PO Box 100 Glebe 2037; or
- Email secretary@glebesociety.org.au



Mural in the St Phillip's Estate, Glebe. (Image: VSY)