

Invitation to the Glebe Society's 48th AGM

Sunday 20 August 2017 11am-1pm
Glebe Town Hall

YOU ARE INVITED

All members of the Society, and especially new members, are cordially invited to attend the Annual General Meeting of the Society at Glebe Town Hall, St Johns Rd Glebe on Sunday 20 August at 11am.

In addition to the usual business activities of the AGM, we will be addressed by guest speakers Senior Constable Renee Fortuna, Youth Liaison Officer, and Detective Inspector Gavin Beck, Crime Manager, of the Leichhardt Local Area Command. They will speak about the work they do with youth programs in the Glebe area. Renee is a talented amateur boxer and works closely with Indigenous youth in the Glebe area. Members might remember hearing her speak at the Centipede fundraiser last year.

Office bearers of the Society and other members of the Management Committee will be elected at the AGM and members are warmly encouraged to consider the benefits of active involvement in your Society. The positions open for election are President, Vice-President, Treasurer and Secretary, as well as five other member positions.

Nominations will close on Sunday 13 August at 11am. A nomination form is enclosed with this *Bulletin* and is also available on our website.

Nomination forms must be signed by two members of the Society and accompanied by the written consent of the candidate.

I invite you to get in touch with me (president@glebesociety.org.au) to discuss your interest in joining the Management Committee and to learn more about what is involved. We will be happy to provide information about the Management Committee and our very active subcommittees, which are open to any member to join.

Allan Hogan
President

Agenda for the AGM

- Welcome and acknowledgement of country (Allan Hogan)
- Apologies
- Minutes of 2016 Annual General Meeting for confirmation
- Treasurer's report for 2016-2017 (Jane Gatwood)
- Subcommittee reports (including questions on reports already published)
- President's report (Allan Hogan)
- Election of Management Committee for 2017-2018 (Allan Hogan)
- Guest speakers: Senior Constable Renee Fortuna and Detective Inspector Gavin Beck
- Close of meeting & refreshments

Public meeting tonight (Thursday 27 July): If you received your *Bulletin* today – Thursday 27 July – it's not too late to get along to the Public Meeting at Record Reign Hall to discuss a proposal to establish a Childcare Centre at this historic building. Record Reign Hall is on the corner of St John's Rd and Derwent St. Meeting starts at 6pm. Note that the July *Bulletin* listed an incorrect date for this event.

Letters to the Editor



Dear Virginia,

Congratulations to Asa Wahlquist on her excellent article on the harm done to our aquatic cousins by the ingestion of non-biodegradable plastics, the result of our careless disposal of single use plastic bags. We are lucky to have her as the convenor of our Environment subcommittee as we are also fortunate to have Jamie Parker, MLA, as our local member of state parliament.

Since the publication of Asa's article Woolworths, Coles and Harris Farm have decided to phase out the use of plastic bags. The next logical step would be legislation to outlaw them but it looks as if on this issue as on others, such as WestConnex, we are likely to be disappointed. I can't help wondering what I'm going to use as a bin liner when the withdrawal happens but perhaps we all need to make some sacrifices for the future of life on our planet.

Yours faithfully,
Ian Edwards

Hello Virginia

I so enjoyed the story about the Palms at Darling Harbour ... but I think you must have gone to press just as the palms moved again!

Do you or anyone else in the Society know what's happened to them?

After enduring so long it would be a travesty if they've been felled (as have some of the palms in the Rozelle Goods Yard).

I look forward to hearing further.

Kind regards
Roslyn Burge

I don't know what has happened to them – perhaps someone else does? Virginia



History & Heritage

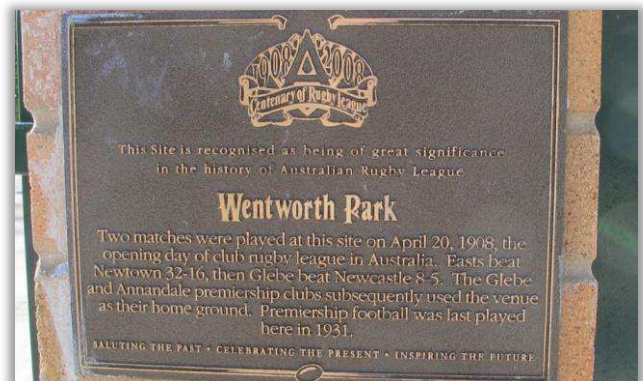
The Dirty Red lineage of our Vice President, John Gray



John Gray at the first game of the re-formed Dirty Reds (image: Michael Magee)

John Gray writes on how it feels and what it means to him to have the Dirty Reds back.

During a meeting at the Glebe Town Hall on 8 January 1908, the Glebe District Rugby League Football Club was formed – the first Rugby League Club in Australia. It played from 1908 to 1928 with Wentworth Park as its home ground. There are memorial plaques at both sites.



Memorial plaque for the Dirty Reds at the tower at Wentworth Park. This plaque is one of hundreds in the searchable Plaques database on our website (https://www.glebesociety.org.au/?post_type=plaques)

The Club never won a first grade premiership but had a fine record. In 2017 they were re-formed and currently play in the Ron Massey Cup in a coalition with Burwood and Concord. My father and uncles played for Glebe, the Dirty Reds, so let me tell you how this feels.

For me, it starts with that photo of my uncles and Dad in their Dirty Reds outfit challenging the camera (photo, this page). They represented a team of Glebe's essence: working class, parochial; in it together. Max Solling showed me the photo and kindly allowed my cousins and me to talk about the Gray Brothers with him. Bert played for Australia as an incredibly fit, talented, quick but light (67kg) second row forward. He played with finesse. Paddy's playing style is best described by his own comment when appearing before yet another disciplinary meeting, 'We all know how this ends. Let's toss, 'double or nothing' and get it over with.' Frank and Tom knew that to be a Dirty Red was to be one of 'our players' with the hopes and duties that came with it. As Max explains in his book, *An Act of Bastardy*¹, everyone took it very seriously. The Dirty Reds were part of the glue of Glebe.



The Gray Brothers. Bert Gray, Tom Gray, Arthur 'Paddy' Gray and Frank Gray (Source: the Dirty Reds)

If you are very lucky, you may hear Max Solling talk about the Dirty Reds. During 'that speech' he becomes one of the players he talks about. You can watch him swerve, pass and tackle as he recalls their actions. Then you see Max's passion and hear the strong argument showing how important – and how shabbily treated – was Glebe. It infected the group led by Darren Flynn² so mightily that it went through years of effort to get the Dirty Reds back into the League.

And they are back. I attended their inaugural lunch and saw a small tear as my cousin, Vince, received recognition that his Father, Bert, had been named as a Glebe Immortal. I was at Leichhardt Oval in 2017 for their first game when the Dirty Reds defeated Wests. Their previous match had been in 1928. I will be there when the Dirty Reds return to their home ground at Wentworth Park. I will be there with all of Glebe. I will be barracking for the Dirty Reds so loudly they'll think Yabba³ is back.

John Gray
Glebe Society Vice President

¹ *An Act of Bastardy: The Axing of the Glebe Club – History of Glebe Rugby League Football Club 1908 – 1929* by Max Solling, 2014, Walla Walla Press. Available from Gleebooks.

² Darren wrote a great article about the Dirty Reds, past and present, for our May *Bulletin*. It can also be accessed on our website here: <https://www.glebesociety.org.au/?p=12567>.

³ Yabba was a famous barracker, for whom there is a statue at the Sydney Cricket Ground (photo, this page). His real name was Stephen Harold Gascoigne. His comments so upset a Glebe player that at half time he reportedly claimed that he would murder Yabba if it continued. Yabba left. T'was a Gray wot shut 'im up!

Editor's Note: To find out more about the Dirty Reds, see their Facebook page:
<https://www.facebook.com/GlebeDirtyReds/>

REARVIEW with Carmel Vanny (née Pye) by Margaret Cody

Your background

My paternal grandparents and two of their children (including my father) moved from Coolamon to Glebe in 1927. They moved to Boyce St in 1930 and my parents left there in 1974.

Your earliest memory of Glebe

Apart from sitting on my Dad's knee on the front veranda of our house, my earliest memory of

Glebe is playing in Boyce St and Boyce Lane with lots of other children – dinky rides, skipping and piggy-backs, for example: we were also free to wander a long way from home, provided we returned by dusk. I also remember the sound of the race-caller from Harold Park Paceway, going shopping for Mum at the age of four and the Clothes Props man in his horse and cart, announcing 'Props for sale'.

The Street where you lived then

In terms of aesthetics Boyce St was quite stark, with rundown and unpainted houses and very little in the way of gardens. The road surface was gravel and devoid of cars. In terms of community, Boyce St was full of life with a constant flow of adults and children walking along the street and others sitting on their front verandas well into the evening. Despite its shabbiness, Boyce St had a healthy social feel, with the constant experience of connection, care and friendliness.

The Street where you lived now

I left Boyce St in 1970. However, I have been a regular visitor to Glebe since, through my connection with an ex-students committee and several friends. Now the street is aesthetically attractive, with the restoration and extension of many homes and also the development of front gardens and the planting of trees on the footpaths. I notice an increase in dog ownership and an almighty increase in car ownership. I also observe a decrease in resident numbers, in particular children. As a non-resident now I don't really know how it feels socially to live in Boyce St.

Transport – how you got about?

As a baby I travelled by pram! Walking was a regular way to move around and walking long distances was commonplace and accepted. For significant distances the tram system was a reliable service and children were competent users by school age. The tram stopped at Central, so this enabled easy access to train travel. Occasionally we caught the 459 bus at Bridge Rd and travelled to York St in the city, which was close to the State Library: a great resource for school projects. Very few people owned cars.

Biggest Changes

I observe the following significant changes – gentrification of the suburb and the development of the streetscape in Glebe Rd with coffee shops and restaurants, and the general greening of the area. I observe the fast pace of life, along with the congestion caused by cars and buses. The demographic seems to include more people living alone, more professional workers, more University students and a more culturally diverse community.

Socio economic mix – shifts

Economic disadvantage was very much part of life during my time in Glebe. Many fathers were low-paid workers and some were unemployed.



Carmel Vanny (image: supplied by Carmel)

Single mothers suffered great hardship and with a lack of childcare couldn't get work. Most houses were rented and some divided into flats, housing several families, with access to one bathroom and one toilet only. Problems with rising damp, fleas and poor heating were common. I recall many older people living in one room: a bed, a commode, a sink and one gas cooker. Fortunately many parents were creative when it came to survival and protected their children from the reality of hardship. I knew a few families only, where fathers had professions and owned homes.

Now – The cost of housing in Glebe is now very high, which means that only those with significant wealth can afford to buy in the area. Leasers struggle with high rents and long-term residents struggle with high land valuations and subsequent increased costs. I know that some social housing still exists in Glebe.

Colourful characters

My father was a tram conductor for a while, so I heard many stories about Bea Miles.

I recall the delightful Mrs Comerford, who lived in one room in Boyce St, but welcomed visitors, loved children and supplied them with boiled lollies. My own great-uncle Mr Terry O'Leary was a local barber, who serenaded his customers with Irish songs in his light tenor voice. I recall the politician Mr Dan Minogue, who was a well known local Irishman and the Labor member for West Sydney until 1969. He was also very dedicated to supporting social welfare charities.

What do you miss?

As a non-resident now, I can only comment on what appears to be a decrease in the strong sense of neighbourhood and community that existed in my time. From my early life perspective, Catholic families in the large parish of St James enjoyed the social scene of lots of children, dances, concerts and picnics. I do

realise that there was a big difference between local Social Catholicism and the harshness of Catholic teaching. And of course I miss the civilised feel of the tram system.

What do you welcome?

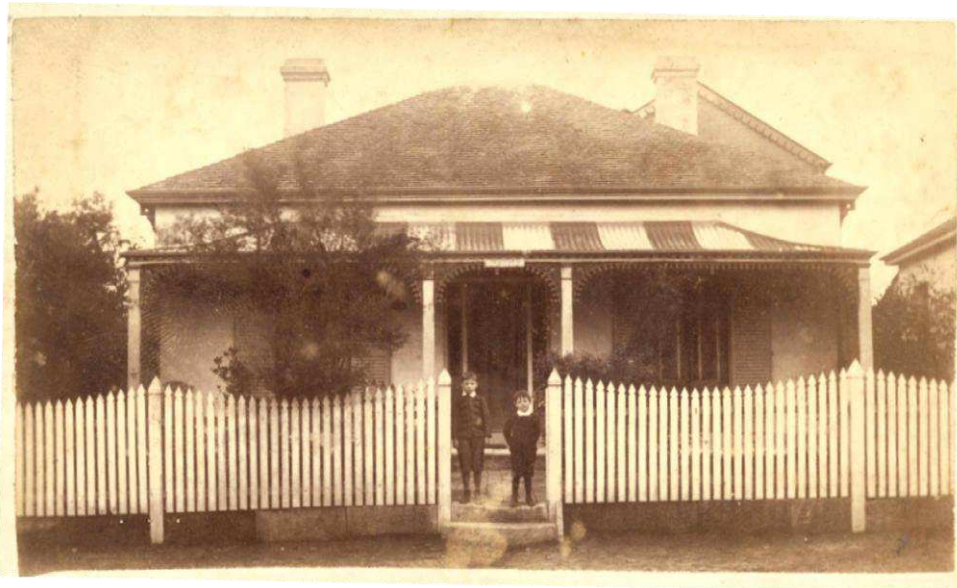
The development of Glebe Point and the Bay into lovely community spaces for people of all ages and of course their canine companions. I welcome the wonderful variety of eateries and delicatessens, which provide National dishes and many healthy Vegetarian options. I welcome

the sight of the Anzac Bridge and think it is a wonderful engineering masterpiece, which looks perfect from every angle. I welcome the modernisation of the schools I attended, in appearance and curriculum.

Any other observations?

My life observation, coloured by my years of living in Glebe, is that Social Capital is as crucial to a good life as Economic Capital. That is not to idealise poverty or to say that of itself it is a good thing.

This month's mystery photograph



This month's puzzle ... Where's this house? Email your suggestions to heritage@glebesociety.org.au

Community Matters

An Exchange Platform for Glebe? by Janice Challinor

Have you been wondering what to do about those many useful items we all seem to accumulate in our homes but no longer have a need for? Donations to Charity shops such as Vinnies and our own Glebe St Op Shop are certainly an avenue through which to 'recycle' good functional items, but sometimes the effort of getting them there seems too difficult. If you're like me they often go into the attic or the garage and gather dust until, in absolute frustration, you throw them out in a council clean-up where they are sometimes retrieved from the pavement, or worse still, cast them straight into the rubbish bin.

It is my belief that many people would willingly donate useful goods to others who could use them if a relatively easy way of doing so could be

found. To this end, I've been investigating how it might be done.

'Pyrmont Cares' (www.pyrmontcares.org.au) operates a service through which items of furniture and white goods may be recycled and given to those people who obtain unfurnished property but are unable to furnish it themselves. This includes refugees, ex-homeless persons, victims of domestic violence and those released from detention. GIVIT (<http://www.givit.org.au/>) is a national not-for-profit organisation connecting those who have with those who need, in a private and safe way. GIVIT supports all agencies, services and charities in Australia who work directly with impoverished, marginalised and vulnerable people and makes it easier for organisations to empower their clients and improve quality of life by obtaining the items they

require through the website, at no cost. It has grown into an Australia-wide organisation which also responds to disasters.



Pyrmont Cares volunteers (image: Pyrmont Cares)

However it occurred to me that it may be possible to achieve **a community process right here in Glebe**. We could assist our near neighbours to acquire items they may need, while at the same time benefiting through the donation of functional things we no longer have a use for. To that end a preliminary approach has been made to many of the service providers in Glebe outlining an idea for a local initiative. Replies from several agencies indicate that they would consider using the process.

Concept

- To create a process through which people could offer to donate goods they no longer need to others who need /want such items, but may be unable to purchase them, eg. TV, baby cot, walking frame, etc.
- Items must be in good condition, in working order, legal, safe to use, manageable by one person and capable of fitting into a car or hatchback.
- No large furniture, clothing, footwear, consumables, mattresses or damaged goods will be accepted.
- No money would change hands. Items must be offered and received freely.
- The Platform will essentially target Glebe agencies and residents.

Rationale

- Very positive response to Christmas gift collection from Glebe Society members.

- Suggestion in Glebe Society survey that more could be achieved in this manner.
- Many items have been offered to me in my 'community role' by individuals and the volunteer manager at Chris O'Brien Lifehouse (things given to the hospital which they can't use) for 're-housing' with a local charity, eg. suitcases, small furniture items, make-up items etc.
- I have been able to distribute these to Elsie Refuge, the Asylum Seekers Centre in Newtown and Glebe Public School; but there may be others locally in Glebe who could benefit.
- Donors could de-clutter while at the same time supporting others in our community.

Examples of the type of items visualised are educational toys, vaporiser, baby gate, laptop, microwave, baby bouncer, high chair, clean blankets, pram, stroller, portable cot, vacuum cleaner, child's car seat, sewing machine, kitchen items such as pots and pans, toaster, jug, cutlery and crockery sets, fan, heater, radio, lamp, small TV, bean bag, small occasional table, tools, cleaning items – bucket, mop, broom, brush and pan, mobility aids – crutches, folding walker, Zimmer frame, cane, suitcase, usable towels, etc.

Of course, as well as donated items, such a process also requires personnel to make it work.

(A full explanation of the process can be found on the Glebe Society website at <https://www.glebesociety.org.au/?p=12943>.)

I am therefore keen to hear from society members on two counts. Please email me at community@glebesociety.org.au if you are likely and able to donate items, and secondly, if you have a vehicle and time to assist in the pick-up and delivery process I'd love to hear from you too.

If you have other comments or suggestions for improving the plan please forward those to me as well. I really believe that if this can be put into action the whole Glebe community could benefit.

Janice Challinor

Convenor, Community Development

Robyn Kemmis Indigenous Student Scholarship: If you would like to donate to the Robyn Kemmis Indigenous Student Scholarship you can do so here: <https://www.giving.uts.edu.au/projects-and-causes/robyn-kemmis-indigenous-student-scholarship>. The scholarship will fully fund a three year undergraduate scholarship for a young Indigenous woman's fees, academic expenses, transport and accommodation for study at UTS.

Glebe, Naturally

Our greenest greengrocer – Glebe's Galluzzos *by Asa Wahlquist*

The well-known Glebe institution, Galluzzo Fruiterers, is arguably the greenest greengrocer in Sydney.

From buying the produce and serving the customers to dealing with the inevitable waste, Joe and Damien Galluzzo are striving to be as green as possible.

Joe and Damien are the third generation of the family to run the shop. Joe said 'we are always trying to work out a way to reduce the packaging, reduce the carry bags being used.' After watching the 'War on Waste'¹ series on ABC TV, Joe was inspired to go one step further and ask customers to recycle the plastic containers that produce like berries is sold in. 'The odd person would do it previously, but a lot more are doing it now.'

Joe admits that reducing the use of plastic is challenging. 'The produce comes packaged from the markets, you can't stop that. What they can do is clean the plastic containers and use them for their seconds stock. People aren't worried so much what it looks like, it is just selling the stock. We are using up the packaging that way and it is working.'

At the front counter, customers are encouraged to use paper bags, or to pack their purchases in boxes or their own carry bags. Galluzzos also sell 'Fruity Sacks'², reusable bags for fruit and vegetables, that were designed by a customer. Damien said 'she was one of the originals. After that show ['War on Waste'] a couple of weeks ago we can't keep up with them. Everyone is interested.'

They do stock single-use plastic bags. 'We have to, but we discourage people from using them.' Joe admits there is a fine line between serving the customers and reducing the use of plastic. 'I can't say, 'No you can't have it', because then they will say, 'Oh, I can get it down the road'. I can encourage it, I can explain why it is a better thing not to use plastic but at the end of the day if the person is adamant about it they will get one.'

'I had a customer the other day go 'I need it for my rubbish bin, if I don't take this I have to buy plastic' so I am supplying rubbish bin bags!' Joe laughs, adding 'At least she is reusing it.'³

In the past the Galluzzos have given customers calico bags as Christmas presents.

Joe is reluctant to make money from something he saw as a gift, but he is reconsidering stocking and selling them.

Galluzzos' environmental consciousness begins at the wholesale markets, with the personal relationships the family has built with growers over the generations. They prefer to buy produce grown in the larger Sydney region. 'Because A. you know it hasn't travelled far and B. you know the person growing it, so you can ask them questions you can't ask a market agent.'

'We know 99 per cent of our local market growers, we speak to them, you are constantly on the phone to them or talking face to face.'

The shop is currently stocking local silver beet and leafy greens, root vegetables, including beetroot, parsnips and dutch carrots, pumpkins and lemons.

In the 'War on Waste' program the presenter, Craig Reucassel, visited a banana farm where a huge quantity of bananas was being mulched because they didn't fit the tight supermarket specifications. Under their contract, the farmer was not permitted to sell them elsewhere.

But it is a different situation with the growers Joe deals with, who have far more flexibility. He also has customers who are less concerned about the appearance. 'We have outlets, like restaurants, who are only going to chop something up, who are after something that is cost effective. If you have a couple of days up your sleeve (after talking to the grower about the less-than-perfectly-shaped product) before that stock comes along, you can talk to the restaurants and say that is coming.'

Galluzzos used to put out five or six Sulo bins overloaded with rubbish every day. But that is now down to one and a half or two. 'We have a compacter for the cardboard, so all our cardboard gets taken away for free. And we have a vegetable mulcher'. The mulcher processes all their green waste, then pumps it into a holding tank. The whole process is computerised. 'Every so often a truck turns up and pumps it out and they use it for fertiliser.'

Wax and foam cartons are returned to the growers, and the restaurants also return them.

'We are always looking to see how we can fix things up,' Joe says. 'Even the way you talk to a

customer makes a difference. Instead of saying, 'Would you like a bag?' I say 'Are you OK with that?' In other words I make them make the choice. They go, "No thanks, I'm OK".'

Asa Wahlquist

Convenor, Environment

¹ The three episodes of the ABC's War on Waste can be watched on iview: <http://iview.abc.net.au>

² Fruity Sacks: www.fruitysacks.com

³ Handy hint. If you compost all your green waste, you don't need plastic rubbish bags. A paper bag, or wrapping it in newspaper will do.



Joe Galluzzo outside Galluzzo's (image: gippslantimes.com.au)

Connected, Creative Glebe

Glenlea: First 'Our House' event was a sell out success!

The first 'Our House' event was held at *Glenlea*, 4 Mary St Glebe on Sunday 9 July. It was a great success with 50 members enjoying the view across Blackwattle Bay on a beautiful sunshine filled Sunday afternoon in the beautifully restored *Glenlea*. The lovely afternoon tea and 'bubbles' made it a very social event.

Members really appreciated being able to see the interior of the home 'up close', having access to the different and impressive vistas of Blackwattle Bay on offer from the vantage points of the garden and balconies.



Members enjoying Louis and Patty Patsalos' hospitality at the inaugural 'Our House' event at *Glenlea* in Mary St Glebe. (image: Philip Vergison)

We were also very pleased that some new members were able to join us at this event.

Special thanks to our generous hosts, Louis and Patty Patsalos, who opened their home and shared some stories on their renovation experience. Patty said

*It was our pleasure hosting the Glebe Society and members and we were happy that we could lift some of the mystery surrounding the build and renovation of *Glenlea*.*

Next 'Our House': 12 November 2017 (2.30-4pm) at another very special Glebe home. More details in the next *Bulletin* – bookings will be limited.

Judy Vergison
Events Coordinator

Report on latest *Glebe Voices*

On Wednesday 19 July, Andrew Botros gave us an introduction to signals, neurons and aspects of artificial intelligence (AI).

Among many points, he touched on the future of work, the transience of careers and the control of many areas of endeavour by a few very rich individuals or companies. He also talked about the application of AI in processing signals in cochlear implants.

There was animated discussion on driverless cars and the potential and responsibility for accidents, machine reading and character recognition and the loss of appreciation for font design.

Yuga café hosted our *Glebe Voices* session – our thanks to them as always.

Carole Herriman

100 + 150 = 250

- ♦ One hundred years since the birth (in November) of the late University Organist Norman Johnston.
- ♦ One hundred and fifty years since the founding of St Andrew's College within the University of Sydney.



- ♦ Two hundred and fifty years since the death of Georg Philipp Telemann.

All this will be celebrated at the 28th Annual Glebe Music Festival.

Peter Meyer in his *SMH* obituary of Johnston wrote:

He ... enlisted in the second Australian Imperial Force after the fall of France, and served in Egypt and Palestine, but transferred to the RAAF in 1943 in order to serve in Europe. Ever the pessimist, he did not expect to survive, but fate had other plans for him.

Those plans, his life and his work will be remembered in a free organ recital by Amy Johansen at the Great Hall, University of Sydney, on Sunday 5 November 2017 at 3.30pm (preceded by a carillon recital in the quadrangle at 2pm, an optional tour of the carillon at 2.45pm and afternoon tea at 3pm).

St Andrew's College will host a solo flute recital by Professor Ashley Solomon, Director and co-founder of *Florilegium*, on Wednesday evening 25th October at 7.30pm in the College Chapel (19 Carillon Ave, Newtown NSW 2042). Solomon will perform a flute recital entitled *Father, Son and Godfather*, with works by JS Bach, CPE Bach and Georg Philipp Telemann (1681-1767). The recital marks the release of his solo CD recording of the Telemann flute fantasies. Entry is free – but please register at: <https://www.trybooking.com/book/event?eid=278736>

Dr E. David McIntosh AM AMusA
Artistic Director, Glebe Music Festival
www.glebemusicfestival.com

Glebe Art Show returns in August

Calling all artists from the Glebe area. Enter your work for a chance to win one of eight prizes as well as have your work for sale, to be held from Saturday 12 August to Saturday 19 August at Glebe Library and *Benledi House*.

The Character of Glebe prize, initiated and sponsored by The Glebe Society, encourages artists to celebrate Glebe's heritage. Other prizes are offered for painting, photography and works on paper and a prize to encourage young artists (18-30 yrs)



This is an incredible opportunity to have your work on display for the public.

For more information go to www.glebeartshow.org.au or pick up an application form from any City of Sydney Library.

We also need volunteers to help run the show, whether it be staffing for a couple of hours or assisting with the hanging of the artworks. Please email Margaret on mailto:glebeartshow.volunteers@gmail.com if you have some spare time between 6 and 20 August.

Opening hours for the show are: Monday to Friday 10am-6pm; Saturday 10am-4pm; Closed Sunday.

Benledi/Glebe Library is located at 186 Glebe Point Rd (corner of Wigram Rd), Glebe.

Fiona Verge

Players in the Pub

Two one-act comedies directed by Peter Talmacs:

One old – *How He Lied to Her Husband* by George Bernard Shaw.



One new – *Circus* by Mark Langham.

7pm Wednesday 23 August at the Toxteth Hotel Ferry Rd/Glebe Point Rd (first floor, entry via Ferry Rd stairs).

Free admission. Donations box. The kitchen is open from 5pm. Please order early. We always start on time!

Lyn Collingwood

Thirsty Thursday



Glebe Society members and friends are invited to meet in restaurants in and around Glebe, usually on the first Thursday of each month, to eat and talk with other people who live in Glebe.

We try to pick places where we can share dishes, and have eight or so people at each table.

Put these details in your diary now:

On Thursday 3 August at 7pm we will go to *Himalayan Char Grill*, 41 Glebe Point Rd.

On Thursday 7 September at 7pm we will share an Indian meal at *Darbar*, 134 Glebe Point Rd.

And on Thursday 5 October at 7pm we will share a Spanish meal at *Despaña*, 101 Glebe Point Rd.

Please email or ring Edwina on 9660 7066 by 6pm on the Wednesday before to let us know if you are coming, or if you are likely to be late.

Edwina Doe

Have you renewed your membership?

Membership in The Glebe Society is now due. Renewal letters were posted to all members (except Life Members) about a month ago. If you haven't already renewed, you can use that form to renew, or you can renew on our website, here: https://www.glebesociety.org.au/?page_id=9542. Don't leave it too late or you will miss out on future *Bulletins*!

2016-2017 Annual Reports

Planning Subcommittee Annual Planning Report 2016-2017

Overview

Some of the most significant changes of 2017 have had no direct impact on Glebe, though they will certainly have flow-on effects. WestConnex will not go near Glebe, though its impact on some nearby suburbs is already obvious. We have opposed the proposal from the beginning, as it is clearly just another version of the radial inner city expressways that threatened such destruction in the 1960s-1970s. Improved public transport is the only lasting and satisfactory answer to the needs of commuters.

The Greater Sydney Planning Commission plans also suffer from lack of detail about transport and infrastructure, but it looks as though the City of Sydney already meets most of the requirements for future development. However, it remains a concern that the increasing costs associated with the extension of Light Rail appear to be having an impact on the capacity of the City to meet its obligations as far as the masterplan for the Johnston's Valley parklands are concerned. It is puzzling that Light Rail in Sydney is so expensive. It has been provided faster and cheaper in other cities.

We are also lucky to have escaped the shambles resulting from forced council amalgamations. Though some councils have been amalgamated, often without sufficient regard for consequences, others have successfully appealed against amalgamation, so the overall situation is probably at least as inequitable as before, and possibly more confused and chaotic, while major decisions are being made before the council elections due in two month's time, while the people are unrepresented. City of Sydney has been through this process once before, in 2003, and one can only feel for our

previous municipality, Leichhardt, in having to go through it.



Artist's impression of Federal Park in the Johnstons Creek Parklands Masterplan (image: City of Sydney)

Major developments

The last Harold Park housing block is nearing completion, though work on the affordable housing block has not yet begun. The Tramsheds continues to gather awards and plaudits, but the City is dragging its feet on completion of the park and community space.

Work on the former Government Garage site on Wentworth Park Rd is well advanced, including footpath widening and planting, and there are final approvals for the controversial mixture of private/affordable/social housing (total 500 dwellings) on the adjacent Cowper St and Bay St site. The decision to replace the former Remand Centre at the rear of *Bidura* with 82 dwellings is now in the hands of the Court.

Proposals for a revamped Fish Market are a regular occurrence. Nevertheless, there is at least

a chance that the most recent announcement may come to fruition. The important thing to watch out for is actual plans, which have previously never eventuated. Watch Lesley Lynch's column to see what their impacts are likely to be.

The future

The fact that proposals for the Bays, including the Fish Markets, are taking such a long time to emerge should not distract us from their dominance

in future development. The sheer area involved, sixty hectares, dwarves even nearby future development along Parramatta Rd, which is also more distant in time and location. Meanwhile the State Government's push for greater high rise apartment development will have repercussions over large areas of Sydney.

Neil Macindoe
Convenor, Planning Subcommittee

Blue Wren Subcommittee Annual Report 2016-2017

Five landcare/bushcare groups worked in Glebe throughout the year to support the establishment and maintenance of biodiversity in our suburb's parks. The Subcommittee has 12 members, including representatives from each of these groups, and met on seven occasions during the year; all members of the Society are always welcome to join the Subcommittee and attend our meetings. Of special importance has been the involvement of so many local residents in the general care of their neighbourhood parks and in the planting of native flora. We were able to provide financial support for the groups, eg by purchasing wooden stakes to help protect the new native shrubs in John St Reserve. During the year, the Subcommittee valued its collaborations with Sophie Golding, the City of Sydney Urban Ecologist and Nick Criniti, the City of Sydney Parks Coordinator, as we worked to increase the diversity, abundance and distribution of indigenous fauna and flora.

Inadequate insurance cover for the volunteer members of the bushcare groups in Glebe is a continuing problem. Should a claim be made against the City's public liability insurance policy related to the work of a bushcare group, the City expects the volunteer members of the group to pay the first \$500 of any successful claim (even though each group has no financial assets). In a letter to the City, the Society stated 'It seems quite unreasonable to expect group members to pay this cost personally when their role is to work voluntarily for no personal profit or gain to improve their local neighbourhood environment.' In another ongoing matter the Palmerston and Surrounds Landcare Group has been asking since 2015 that the City install a tap in the lower section of Palmerston Avenue Park near the Glebe Light Rail stop so that their plantings of native flora can be watered. Hopefully both issues will be resolved in the coming year! On a more positive note, the City agreed to the Society's request that a dying *Ficus obliqua* (Morten Bay Fig) in Jubilee Park near the light rail stop not be removed but heavily pruned and retained as a 'habitat' or 'stag' tree. The tree will provide an important resource for Glebe's wildlife.

The Society's fourth annual spring bird survey was held at 7am on Sunday 23 October – we saw 466 birds of 30 different species in eight of Glebe's foreshore and pocket parks. The most common bird was the Rainbow Lorikeet followed by the Noisy Miner, but unfortunately no Blue Wrens were found. However, Willy Wagtails who enjoy the same habitat were seen in Johnstons Creek near the Tramsheds. A highlight was the sighting of an unidentified raptor (Peregrine Falcon or Brown Goshawk) in weedy trees near the Jubilee Park Light Rail stop. This year's survey will be on Sunday 24 September and all Society members with an interest in birds are invited to attend.

For a third year the Subcommittee organised a talk about an aspect of biodiversity that was important for Glebe. On 24 May, Professor Chris Dickman, Professor in Ecology from the University of Sydney, spoke to 34 Society members and their friends about the 'Impacts and local management of cats, dogs and foxes'. He described the results of research studies on the predatory habits of cats in the eastern suburbs of Sydney which showed that domestic and stray cats are very efficient hunters of small native fauna and rats, and tend to specialise in a particular species eg some will hunt and kill small birds while others are very successful at hunting lizards or rodents. If you allow your cat to spend time in the garden, recent studies at Murdoch University in Perth have shown that fitting a small brightly coloured vest/bib to cats when they are outdoors stopped over 80% of cats killing wild birds and reduced small animal predation by almost half. The main impact of dogs on our local wildlife is one of fear and even a leashed dog will cause birds to fly away to a safer area. Despite the lack of sightings, it would not be a surprise to find that foxes are living in Glebe as they have found safe habitats in parks and golf courses in other inner city regions. As far as their diet is concerned, foxes compete with cats by feeding on rodents and native fauna.

To celebrate World Environment Day, Sophie Golding, Urban Ecology Coordinator with City of Sydney, facilitated a guided walk through Orphan School Creek, Forest Lodge on Sunday 4 June. Judy Christie led the walk which was attended by

about 25 people including the City's Coordinator of Glebe's local parks, Nick Criniti.

The Subcommittee gratefully acknowledges a generous bequest it received from the estate of the late Jan Craney, a former convenor, as well as a further donation from Mary Holt. These funds will be used to organise planting days and other events, which actively promote the enhancement of biodiversity in our parks, school grounds, light rail corridor, and private gardens. They will also be used to foster the education of residents, school children, businesses and others leading to an increased awareness of the value of native plants and animals in our suburb.

Andrew Wood

Convenor, Blue Wrens Subcommittee



Orphan School Creek (image: City of Sydney)

Heritage Subcommittee Annual Report 2016-2017

In Sydney, we are currently mired in an era of rush-to-build. It is a given that arguments for better public transport and more social and affordable housing in Sydney are not disputed. And yes, the issues are complex. But the problem is the abject willingness of government to abandon their own heritage principles and conservation areas and displace long-standing communities in order to 'cut through'. Such a Hausmann-esque approach demonstrates an unwillingness to work around and seek solutions to the preservation of items valued by the community.

the problem is the abject willingness of government to abandon their own heritage principles and conservation areas and displace long-standing communities in order to 'cut through'.

The irony is that the implementation of the NSW Heritage Act 1977 is being celebrated this year. Doubtless the legislation has achieved much in the past 40 years but one is left with the uncomfortable feeling that the fox is in charge of the hen-house. Whilst the NSW Heritage Council labours mightily, other government agencies appear hell-bent on undoing their efforts, either overtly or covertly.

The Glebe Society's Heritage Subcommittee has watched these hostile developments as the year in review unfolded. We strongly objected to the proposal by WestConnex for a 'contained portal' which would have impacted *inter alia* the heritage-listed sandstone retaining wall along Parramatta Rd. We were relieved that this concept was eventually abandoned. The Subcommittee is

waiting to assess the heritage impacts of finalised plans for the WestConnex M4-M5 Link. On a far smaller scale and despite our appeals, it appears that RMS will proceed with its plans to install a massive electronic traffic sign on Parramatta Rd near the corner of Ross St.



Bidura (image: Peter Thorogood)

In relation to Blacket's *Bidura* (1857), the Heritage Subcommittee's focus remains to ensure that the history, fabric, curtilage and integrity of the original building, in its setting, is maintained and respected. The Land & Environment Court's rejection of the Stage 1 plans (building envelope) for the redevelopment of the rear of the *Bidura* site centred on concerns regarding the overshadowing of the heritage-listed building. The Heritage Subcommittee contributed to the Glebe Society's submission to the Heritage Council supporting the listing on the State Heritage Register of *Bidura* and its ballroom.

Also with long gestations, are the final outcomes of our discussions with Council regarding the damage to the Edmund Barton plaque and its remediation or replacement, the restoration and installation of the soldier memorial at the Tramsheds and the installation of a plaque to identify and contextualise

the Lone Pine (*Pinus halepensis*) which is planted adjacent to the Diggers' Memorial in Foley Park. On a related matter, the Glebe Society has sought assurances that the Lone Pine sapling which we donated to the University of Sydney will not be disturbed by the proposed new museum to be built on the old tennis courts.

The Heritage Subcommittee has continued to arrange, during the WWI Centenary years, the Remembrance (Armistice) Day service at the Diggers Memorial. Given the noise of increased traffic on Glebe Point Rd, we may need to move part of the service to a quieter location further into Foley Park, although the wreath-laying will still take place at the Memorial.

Subcommittee members have been active in contributing to the *Bulletin* with valuable articles on building histories, aspects of decorative arts and social history. Subcommittee members continue to respond to heritage and history related enquiries which come in via the Glebe Society website.

At his invitation, we provided input on a number of heritage-related issues to Neil Macindoe, the Glebe Society's Planning Convenor. Subcommittee members have also been able to flag heritage concerns where unauthorised or inappropriate work in our conservation areas has been identified.

The Subcommittee continued its reflections on ways in which it might contribute to the Society's 50th year celebrations, pending the finalisation of overall plans by the Management Committee.

Liz Simpson-Booker stepped down as Heritage Convenor in April 2017. Ted McKeown has taken up the cudgels. Both wish to thank the members of the Heritage Subcommittee who have made significant contributions to achieving our objectives of providing advocacy, information and insights into Glebe's past.

By *Liz Simpson-Booker* (former convenor) and *Ted McKeown* (current convenor), Heritage Subcommittee

Transport and Traffic Subcommittee Annual Report 2016-2017

This has been a busy year for the Transport and Traffic Group. We have been involved with several matters including working to limit the adverse impact of the WestConnex project on Glebe and Forest Lodge, seeking improvements to the cycle amenities in our suburb and making our concerns known to the State Government about its proposal to privatise our bus services.

WestConnex

The focus this year of our opposition to this hugely expensive and flawed road project has been on Stage 3, the so called M4-M5 Link, which has the most direct impact on Glebe and Forest Lodge. We made submissions to the Sydney Motorway Corporation objecting to aspects of the project that had an adverse impact on our suburb, we worked with the No WestConnex Glebe and Forest Lodge Group to organise public meetings in opposition to the project and meet with the M4-M5 Link Project Manager to voice our concerns. The Stage 3 section of the WestConnex project links the M4 at Haberfield with the M5 at St Peters and involves road tunnels running east from Haberfield and then south beneath Annandale and emerging near Sydney Park with tunnel links to the Rozelle Goods Yards, the Anzac Bridge and Victoria Rd. WestConnex spent much of the year refining the proposed route of the tunnels and the associated infrastructure in consultation with the community. The initial proposal to build traffic portals on Parramatta Rd in Camperdown giving traffic access to and from the mainline tunnels met with strong opposition in Glebe and Forest Lodge, not the least because this would have put 20,000 extra vehicles

daily onto Broadway and City Rd and would have involved a threat to heritage sites along Arundel St. Late last year WestConnex announced that the portals would not be built and the mainline tunnels would be relocated further west away from Glebe, Forest Lodge, Camperdown and the RPA Hospital. The Environmental Impact Statement for Stage 3 is due to be released later this year.



WestConnex 'spaghetti junction' (image: m5westwidening.com.au)

Cycle Amenities in Glebe and Forest Lodge

The City of Sydney's 10 year plan *Cycle Strategy and Action Plan 2007-2017* to build connected cycleways through all its precincts has run its course and the City is now reviewing what progress was made. Later this year the City will release a revised plan to improve the amenities that have been built and will consult with the community. As part of this process we have lodged a submission

with the City seeking an improvement to the cycle amenities in Glebe and Forest Lodge. Our concern is that cycle amenities in our suburb are for the most part rudimentary and need improving. We are particularly concerned about the shared pedestrian / cycle path running along the Blackwattle Bay foreshore which exposes both pedestrians and cyclists to potential injury. We asked that separated cycleways be built in Glebe and Forest Lodge which would better protect cyclists from traffic and would take the pressure off the Blackwattle Bay shared pedestrian/ cycle path. We asked that two separated cycleways be built, one running north to south giving access to the University of Sydney, UTS and Newtown and the other running east to west giving access to Pyrmont and the CBD. We also sought an improvement in cycle parking facilities.

Privatisation of Glebe and Forest Lodge Bus Services

The State Government recently announced that it will engage a private operator for Bus Region 6 which is currently operated by the State Transit Authority. This will affect over 200 bus services in the Inner West and South West of Sydney including the routes 431, 433 and 470 that service Glebe and Forest Lodge. We have made a submission to the Premier seeking an explanation for this proposal and expressing our concerns that services may be downgraded under a private operator, particularly at off peak times that will prove less profitable for the private sector to run. We have sought an assurance from the Premier that current services and timetables will be retained.

Murray Jewell

Convenor, Transport and Traffic subcommittee

STOP PRESS: UrbanGrowth consultation on Bays

UrbanGrowth NSW will be seeking feedback on draft principles that will inform the creation of a masterplan for the Bays Market District, including a rejuvenated Sydney Fish Market.

An online survey on the masterplan will be open on The Bays Precinct website www.thebayssydney.nsw.gov.au from the week commencing Monday, 31 July until Friday, 25 August 2017. The public can also register to attend one of two workshops to be held on Thursday, 10 August and Saturday, 12 August, 2017.

The masterplan will guide the transformation of the Bays Market District, and we want to hear from people of all ages and walks of life.

Located just two kilometres from Sydney's CBD, the Bays Market District comprises the waters of Blackwattle Bay and land along Bank Street, Pyrmont, including the Sydney Fish Market.

The district is one of eight destinations in the Bays Precinct Urban Transformation Program.

The masterplan will consider opportunities for public open space, community and recreational facilities as well as residential, employment and supporting maritime uses within the district.

We are committed to engaging with the community throughout the masterplanning process.

The NSW Government's vision for the Bays Market District is to rejuvenate the Sydney Fish Market and expand the fresh food offering, creating a world-class Bays Market District connected to the water; to provide compatible housing suitable to living on the edge of the CBD; and to seamlessly integrate the district with Wentworth Park.

Source: email from UrbanGrowth

For your calendar

Thursday 27 July, 6pm. *Public Meeting to discuss Childcare Proposal*, Record Reign Hall, St Johns Rd.
 Sunday 30 July, 10am. *Working bee in Orphan School Creek Park*, contact Judy Christie – 0437 693 372.
 Thursday 3 August, 7pm. *Thirsty Thursday: Himalayan Char Grill*, 41 Glebe Point Rd.
 Saturday 12 to Saturday 19 August. *Glebe Art Show*, Benledi and Glebe Library.
 Sunday 20 August, 11am-1pm. *Annual General Meeting*, Glebe Town Hall.
 Wednesday 23 August, 7pm. *Players in the Pub*. Upstairs, Toxteth Hotel.
 Thursday 7 September, 7pm. *Thirsty Thursday: Darbar*, 134 Glebe Point Rd.
 Sunday 24 September, 6:45am. *Spring Bird Survey*. Meet in Paddy Gray Reserve, Hereford St, contact Andrew Wood – 9660 6104.
 Friday 13 October, 6-8.30pm. *Sunset Soirée for Centipede*. Glebe Rowing Club.
 25 October to 25 November. *Annual Glebe Music Festival*, <http://www.glebemusicfestival.com/>.
 Saturday 4 November, 11am-1pm. *Researching Your House Online*. Glebe Town Hall.
 Sunday 12 November, 2.30-4pm. *Our House*. (details tbc).
 Sunday 3 December, 5.30-8pm. *Christmas Party*, Glebe Town Hall.
 Wednesday mornings from 8:30am. *Glebe Bushcare Group* meets near Jubilee Park, contact Sue Copeland – 9692 9161.



Glebe Society Inc. Established 1969

Management Committee

| | | | |
|---------------------|------------------------|--------------|--|
| President | Allan Hogan | 0411 607 813 | president@glebesociety.org.au |
| Vice President | John Gray | 02 9518 7252 | vicepresident@glebesociety.org.au |
| Past President | Ted McKeown | 02 9660 3917 | pastpresident@glebesociety.org.au |
| Secretary | Jude Paul | 0438 600 882 | secretary@glebesociety.org.au |
| Minutes Secretary | Rozzie Hecker | 0400 11 2610 | minutes@glebesociety.org.au |
| Treasurer | Jane Gatwood | 0488 118 355 | treasurer@glebesociety.org.au |
| Ordinary member | Carole Herriman | 02 9571 9092 | carole@glebesociety.org.au |
| Ordinary member | Diane Hutchinson | 0407 207 177 | diane@glebesociety.org.au |
| Ordinary member | Murray Jewell | 0405 921 945 | transport@glebesociety.org.au |
| Ordinary member | Margaret Cody | 02 9692 9384 | margaret@glebesociety.org.au |
| Bays & Foreshores | Lesley Lynch | 02 9660 5084 | bays@glebesociety.org.au |
| Blue Wrens | Andrew Wood | 02 9660 6104 | bluewrens@glebesociety.org.au |
| Communications | Virginia Simpson-Young | 0402 153 074 | communications@glebesociety.org.au |
| Community | Janice Challinor | 0401 505 657 | community@glebesociety.org.au |
| Environment | Asa Wahlquist | 02 9660 8261 | environment@glebesociety.org.au |
| Glebe Island Bridge | Murray Jewell | 0405 921 945 | transport@glebesociety.org.au |
| Heritage | Ted McKeown | 02 9660 3917 | heritage@glebesociety.org.au |
| Planning | Neil Macindoe | 02 9660 0208 | planning@glebesociety.org.au |
| Transport & Traffic | Murray Jewell | 0405 921 945 | transport@glebesociety.org.au |

Working Groups & Contacts

| | | | |
|------------------------|------------------------|--------------|--|
| Archivist | Lyn Milton | 02 9660 7930 | milton.lyn@gmail.com |
| <i>Bulletin</i> Editor | Virginia Simpson-Young | 0402 153 074 | editor@glebesociety.org.au |
| Events | Judy Vergison | 02 9692 9200 | events@glebesociety.org.au |
| History | Lyn Collingwood | 02 9660 5817 | lyncol1@optusnet.com.au |
| History of Glebe | Max Solling | 02 9660 1160 | |
| Webmaster | Andrew Botros | 0402 112 106 | webmaster@glebesociety.org.au |
| Website technical | Peter Thorogood | 0404 801 947 | support@glebesociety.org.au |
| Chief Twit | Allan Hogan | 0411 607 813 | twitter@glebesociety.org.au |

Highlights this Issue

| | |
|--|----|
| INVITATION TO THE GLEBE SOCIETY'S 48TH AGM | 1 |
| LETTERS TO THE EDITOR | 2 |
| THE DIRTY RED LINEAGE OF OUR VICE PRESIDENT, JOHN GRAY | 2 |
| REARVIEW WITH CARMEL VANNY (NÉE PYE) BY MARGARET CODY | 3 |
| THIS MONTH'S MYSTERY PHOTOGRAPH | 5 |
| AN EXCHANGE PLATFORM FOR GLEBE? BY JANICE CHALLINOR | 5 |
| GREENEST GREENGROCER – GLEBE'S GALLUZZOS | 7 |
| CONNECTED, CREATIVE GLEBE | 8 |
| 2016-2017 ANNUAL REPORTS | 10 |
| BLUE WREN SUBCOMMITTEE ANNUAL REPORT 2016-2017 | 11 |
| HERITAGE SUBCOMMITTEE ANNUAL REPORT 2016-2017 | 12 |
| TRANSPORT AND TRAFFIC SUBCOMMITTEE ANNUAL REPORT 2016-2017 | 13 |
| STOP PRESS: URBANGROWTH CONSULTATION ON BAYS | 14 |



PO Box 100 GLEBE NSW 2037

No.6 of 2017 (August)

Membership of the Glebe Society

- Individual member: \$45
- Joint (2 people, one address): \$55
- Household: \$60
- Concession (student or pensioner): \$20
- Institution or corporate: \$110

How to join

- Join online: complete the Membership Application on our website under 'Membership'
- Download a membership form from www.glebesociety.org.au; or
- Write to the Secretary at PO Box 100 Glebe 2037; or
- Email secretary@glebesociety.org.au



Glebe in the 1970s (image: City of Sydney Bernard Smith Collection)