

Bays Precinct Community Consultation Award: you are joking, aren't you?

The Glebe Society's Bays & Foreshores Convenor, Dr Lesley Lynch, responds to the news that UrbanGrowth NSW has won multiple awards for their community consultation on the Bays Precinct development.

A mix of community hilarity and outrage has greeted the startling news that UrbanGrowth NSW has won two (yes, two!) awards – 'Project of the Year' and 'Planning Award' – for their excellence in public consultation in the Bays Precinct Project. These awards were bestowed by the International Association for Public Participation Australasia (IAP2 Australasia):

<https://www.iap2.org.au/ccms.r?Pageid=6000&tenid=IAP2&DispMode=goto%7C10174>.

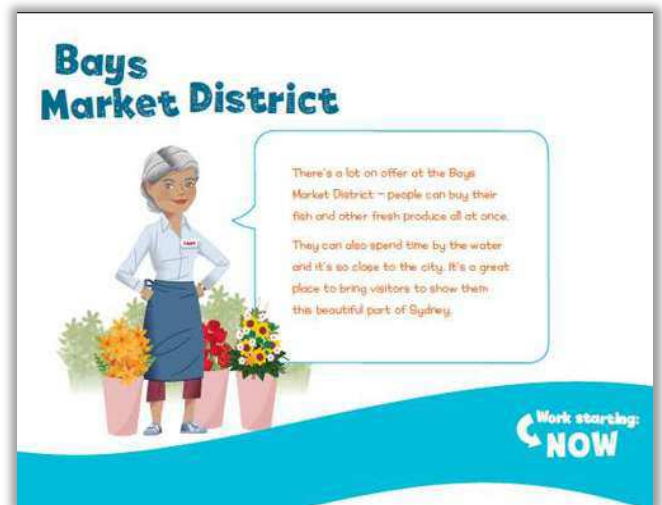
The immediate irony for members of the Bays Precinct Community Reference Group is that we are at this moment, *yet again*, engaged in extremely frustrating interactions with UrbanGrowth about their ongoing inability/refusal to provide meaningful participation or access to information or even to support our requests to set up focused work groups to allow us to provide informed views.

At this point in time, I consider UrbanGrowth's approach to the Community Reference Group to be pretty much a failed venture.

The few meetings we have had since our establishment in October last year have generally lacked substance and provided only superficial overviews of any developments. Our efforts to organise ourselves into sensible work groups around major aspects of the project were not supported. To date we have not been granted access to any of the 'technical studies' that were flagged as critical sources of information. We are not even certain that many of these have actually progressed. We have not been allowed any access to the one we know is at least in draft form – the all-important 'transport and mobility' study. We have not been able to have any sensible discussion about how WestConnex will impinge on the Bays transport planning and the future uses of the White Bay Power Station.

In the early days of the project – when community

enthusiasm was still abundant – groups and individuals worked at developing 'great ideas' and 'in-the-meantime' projects for the Bays and sent them to UrbanGrowth. The 'great ideas' were formally assessed and, we are told, have influenced the 'transformation plan'. The many ideas for action that could happen quickly as transitional or early projects, seem to have disappeared from the current agenda. But we have had no formal feedback.



Extract from the booklet, 'The Big Plan for the Bays Precinct, Sydney' from the 'Schools Hub'; part of UrbanGrowth's educational package for primary school students. (<https://thebayssydney.com.au/schools-hub/>)

We read newspaper reports about 'plans' for very intensive, high rise development around the Fish Markets (almost 2,760 residences) but note that this does not seem to be reflected in education department planning and wonder about the implications for transport in an already dreadfully congested area. We cannot get to have serious discussions about the place and relative priority of affordable housing in all this development.

But of course the Community Reference Group is not the only way UrbanGrowth NSW interacts with the community – perhaps the consultative ‘excellence’ has been elsewhere!

There were those fabulous Bays Precincts summits – one for the ‘international experts’ and one for ‘Sydneyiders’. The international experts’ summit was terrific in that experts shared fascinating ideas and experience about ways in which urban renewal could incorporate both economic priorities and the public good. The Sydneyiders summit was a great fun weekend and provided visitors with lots of interesting information about the history and potential of the Bays, and piles of yellow post-it stickers – and recording facilities – for them to offer their ideas. Which they did. There were very enjoyable ‘open days’ at the White Bay Power Station and Rozelle Bay. And there is also the website with a portal for the input of ideas.

I note the award blurb claims: ‘Over 30,000 people were involved in the public participation program, with almost 4,300 items of feedback or ideas submitted’. I guess every person who walked through the doors of the summit weekend or open day and every post-it sticker and portal input got counted.

One suspects that professional gloss, rhetoric and entertaining events may be the substance underpinning these two awards.

The refusal to have meaningful community consultation may not originate within UrbanGrowth. Likely it is captured – like other agencies – within the corrosive veil of secrecy that excludes the public from any of important information about

development in NSW – until it is all too late to exercise any influence.

We had high hopes for UrbanGrowth and the Bays Precinct – and they might still be our best bet for snatching some ‘public good’ outcomes from this mega urban renewal project – which is on publicly-owned harbour foreshores. But it is just a little hard from the perspective of a frustrated member of the Community Reference Group to take these awards seriously.

Lesley Lynch
Convenor Bays & Foreshores



‘Community consultation’ a la UrbanGrowth NSW. ‘Sydneyiders Summit’, Australian Technology Park, May 2015. (image: V. Simpson-Young)

No WestCONnex Portals Please!

Glebe and Forest Lodge residents attended a ‘Stop WestConnex’ meeting on Monday 24 October at Glebe Town Hall which was organised by the Coalition of Glebe Groups. Over 230 people heard addresses from Chris Standen, transport researcher from the University of Sydney, Dr Christine Cowie, medical specialist from University of NSW and Jan Wilson and Mark Openshaw, Glebe community advocates.

The meeting followed the information sessions held recently by WestCONnex about the planned M4-M5 Link. WestCONnex is planning road tunnels beneath Glebe and Forest Lodge linking up with the M4 at Annandale and the M5 at St Peters, a spaghetti junction road interchange at the Rozelle Goods Yards and traffic portals on Parramatta Rd somewhere in Camperdown around the footbridge. WestCONnex has indicated they are not yet committed to building the traffic portals.

The focus of the meeting was on these portals which according to WestCONnex’s own estimates will pour 20,000 extra vehicles a day into Broadway and City Rd doubling the present amount of traffic on these roads. Construction of the portals will be damaging for Glebe with the trees and possibly some houses in and around Arundel St under threat and the heritage listed wall running along Parramatta Rd also under threat. There will be the nightmare of traffic gridlock along Broadway and City Rd as well the undermining of the urban renewal that is now taking place in the southern CBD along Broadway and in Darling Harbour. The project will also impact on Sydney University, the Royal Prince Alfred Hospital and the highly sensitive Camperdown Cyclotron Medical Facility which is located in the zone of the proposed WestCONnex route. If the portals are built it is unlikely that light rail could then be built along Parramatta Rd, taking away a viable public

transport option for the suburbs along Parramatta Rd. There is also the folly of shunting traffic into the CBD and the inevitable question, where will this traffic go?

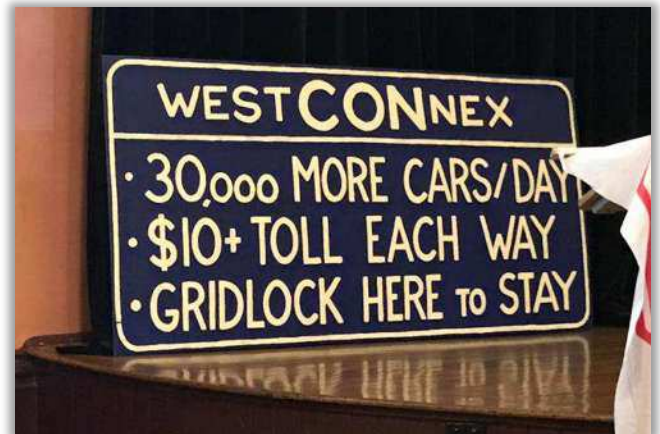
The meeting on Monday night heard that the portals can be stopped through community action and focused lobbying of our politicians. These strategies ultimately stopped the east west link in Melbourne. Relevantly the Strategic Business Case for WestCONnex does not support the portals being built. The main aims of WestCONnex is to relieve pressure on east/west major roads in Sydney (including Parramatta Rd), to improve access to the port and the airport and (once the Western Harbour Tunnel is built) to improve access between the north and south of Sydney. Building traffic portals on Parramatta Rd runs counter to all of these aims.

WestCONnex has indicated that their objective in building the portals is to take pressure off the Anzac Bridge for traffic using WestConnex and travelling between the west and north and east of Sydney. That pressure would in fact be reduced significantly once the Western Harbour Tunnel is built which the State Government say they are committed to do. Whatever traffic flow benefits might result from the portals, and these are uncertain, the cost and fallout from the portals would seem to far outweigh them. WestCONnex is

due to release the Design Reference for the M4-M5 Link before the end of this year, which will indicate whether the portals will be built and if so where they will be located.

The Facebook page on the Stop WestConnex Glebe/Forest Lodge website sets out the community action that is being proposed to stop the portals.

Murray Jewell
Convenor, Transport & Traffic



A sign at the 'Stop WestCONnex' meeting at Glebe Town Hall on Monday 24 October (image: Jan Wilson)

Planning Report, by Neil Macindoe

Opening of the Tramsheds and History of the Tramsheds and Harold Park

As we live nearby we are very conscious of the popularity of the Tramsheds and how many locals, as well as some from further afield, now use it for their shopping and eating. Generally parking is limited and expensive, and this encourages people to access the Sheds on foot or via public transport. Be warned that the restaurants are extremely popular, so unless you are prepared to take whatever is available it is a good idea to book ahead.

It was a condition of the Agreement between the City and Mirvac that Mirvac commission a history of the Tramsheds and Harold Park. It was written by professional historian Susan Marsden, with the assistance of Max Solling and a series of interviews with residents, including members of the Society. It was released to coincide with the opening of the Tramsheds. The Society will let you know when the History becomes more generally available.

25 Glebe Point Rd, 'Doughnut Time'

The Society objected to this proposal which, among other problems, included a neon advertising

sign covering the posted balcony. It has been refused by Council as detrimental to the Conservation Area and contrary to Council's controls. The subcommittee will continue to monitor the situation.



Doughnut Time, 25 Glebe Point Rd. (image: Alice Simpson-Young)

Central Sydney Planning Strategy

The City has put a lot of effort into a strategy to allow the CBD to grow without compromising its general character. The result is an increase in floor space for businesses so business remains the main function of the CBD. The City is concerned to retain the balance between business and residential uses.

Minor Changes to LEP 2012

The City has advertised some changes to the

current LEP, now four years old. In a few instances they may have some slight impact on Glebe, but they are mainly directed at the CBD and major projects. It broadens the areas where public art may be installed, makes possible demolition where there is an existing Development Control Plan, and clarifies existing non-residential uses in residential zones. The Society will keep watch to ensure there are no adverse impacts.

Neil Macindoe
Convenor, Planning

History & Heritage

'From the Terraces', by Liz Simpson-Booker: A heritage vacuum

Readers may be aware that a former Chair of the Heritage Council, Professor Lawrence Nield, recently asked 'If heritage is to be overridden by real estate issues, what's the point of having a Heritage Office, a Heritage Council and a Heritage Minister?' (ABC News posted 7 Oct 2016)

Professor Nield accused the Baird Government of having little respect for heritage and history. His comments were made specifically in relation to the Government's decision to go against the Heritage Council's recommendation to heritage list the brutalist apartment building in the Rocks and sell off the building which will almost certainly be demolished.

The Heritage Minister is not obliged to accept Heritage Council recommendations, but this flat denial of considered, expert opinion in favour of a blatant money grab, is highly disturbing. But what of the Heritage Council itself – has it gone to ground? Minutes of their monthly meetings usually appear on their website about a week after they are ratified by the subsequent meeting.

At its July 2016 meeting, the Heritage Council considered a number of matters of considerable and ongoing significance to us, including:

- White Bay Power Station
- WestConnex M4-M5 link
- Sydney University upcoming works
- Millers Point
- UrbanGrowth

No subsequent Heritage Council minutes have appeared on their website. At the time of writing, two sets of minutes have gone AWOL.

At such a critical time, it is important that information flows in a timely and transparent manner.

'If heritage is to be overridden by real estate issues, what's the point of having a Heritage Office, a Heritage Council and a Heritage Minister?'

Despite the inherent opacity of (all) minutes, the Heritage Council minutes nevertheless help, amongst other things, to keep volunteers working in heritage communities up to date with broader issues, areas of concern and current thinking. They reinforce to us that expert minds are being brought to bear on heritage issues in NSW. They provide tacit encouragement for us to keep pursuing good heritage outcomes in a current environment which seems relentlessly hostile to our state's precious heritage and history.

Liz Simpson-Booker
Convenor, Heritage

Postscript: Since writing the above, three sets of Heritage Council minutes have finally been posted on the web."

A correction: Our June issue (4/2016, p5, col.1) captioned shop fronts as being in Ross St. A reader has pointed out that they are in fact in St Johns Rd.



The Sirius building. (Image: coffee shop soulja)

Rearview: Interview with Dennis Hoolihan

My earliest memory of Glebe is coming around to collect money for victims of the floods in Maitland, in the 1950s, the year before I went to school. Then after that, the biggest memory is starting school in 1955 in Glebe, at St James Catholic Primary School. The classes were big, often in excess of 30, as they were in those days. I am still mates with five of those, boys and girls.

The street we lived in was Colbourne Ave, which, before the war was called Brougham St. We lived there until 1977. I remained home even when I was in the Air Force. I was in the RAAF from 1968-1977, and served in Vietnam with No. 2 squadron. The RAAF years were wonderful, and I still have friends with whom I served in Vietnam. That street has changed in that most of the houses have been renovated. It was working class then, and the street went straight through to Bridge Rd, which is now blocked off.

And transport in Glebe? I remember the trams running from Glebe into the city. Even before you started school you knew which tram to come home on, because there were so many trams coming from the city. And the Glebe Point tram not only had its name on the front but its symbol which was two red dots. Other trams had symbols as well, in different colours.

At Central Railway Station, Marcus Clarke's shop had a tower with a coloured revolving ball on top. Magic for a kid.

The changes I notice are greater traffic and the suburb becoming revitalised, renovated. There is a good mix of people but it is not as friendly as previously.

There were more people on Glebe Point Rd that I can remember. There were five butchers' shops just on Glebe Point Rd (and then it was referred to as Glebe Rd, not Glebe Point Rd even if that was its name).

Another change I recall was that when there was a wedding at St John's Church of England, as it was called then, not 'Anglican', the bells were rung. I haven't heard them for years.

The socio-economic mix has changed from nearly all working class to a real mixture. Most of the social housing was owned and run by the Church of England. Then Whitlam bought the estate and renovated the houses.

Many pubs have closed. I can remember at least four: *The Kentish Hotel*, *The University Hotel*, *The Currency Lass* and *The Excelsior*. And the restaurants have changed. There were only two Chinese takeaways, a grill or two, and fish and chip

shops – and that was it. I also remember the *Astor Theatre*, which became the *Valhalla* and is now converted to units and offices.

Colourful characters I recall include Monsignor Callaghan, then Parish Priest and Bea Miles who used to recite Shakespeare, charge you a penny to hear it, and never pay her fare. My mother used to be in fear that she would get on the tram we were on as she would immediately start interrogating you. For example 'What's his name?' pointing to a child; and 'Why did you call him or her that?' She was harmless but embarrassing.

Things I miss: I don't think Glebe is as safe as it used to be, to walk around at night. I would not walk through the laneways at night now, whereas previously it was a given. That probably applies to other suburbs as well.

Alcohol is more available. Most people used to drink beer or whisky, whereas they drink everything today and there are more places where you can purchase alcohol. On a Sunday you had to travel a long way if you wanted a drink.

The pubs were rougher too. My mother bought a good fridge at *The Friend in Hand* pub, with suspect origins! There were occasionally shootings and stabbings up there also.

Things I welcome include more choices in dining and all the cafés, and the renovated, classy hotels. The pubs are no longer swill houses.

I also welcome returning to be part of the City of Sydney. Since then the work they have accomplished in Glebe is remarkable.

Margaret Cody
Interviewer



Dennis Hoolihan (image: Margaret Cody)

James Henry Trammell: a US fugitive who settled in Glebe after escaping an Arkansas murder charge

A recent message on the Society's Facebook page from Erik Wright, a historian from Paragould Arkansas USA, drew our attention to the case of a James Henry Trammell who escaped a murder charge in Paragould before coming to the attention of the authorities in Glebe. Lyn Collingwood takes up the story:

James Henry Trammell aged 40 was arrested on 13 April 1922 and charged with maliciously setting fire to a house, part of the Church of England Home for Women on Avona Lane Glebe. Trammell was employed as a 'manager' there.

He was then charged with arson and a Coroner's Court inquiry held.

Evidence was given that he'd been employed as a laundryman until 31 March and lived in a house on the premises.

The Glebe Fire Brigade, called after 2am on Sunday 9 April, broke open the front door which was nailed shut with a board across it, and forced the kitchen door. There was a strong smell of kerosene and a near empty tin was found.

Trammell said he didn't know how the fire started as he was in Tamworth at the time with his wife, a sewing machine having been pawned to pay the fares. He didn't return until 11 April. He had kerosene in the house and benzene to clean clothes. The furniture was insured for £200 and he valued the lino at £150.

He was not convicted, the Coroner finding the act committed by person/s unknown.

Trammell turns up again aged 78 in 1945 when he was caught selling butter in the Livingstone Hotel

Petersham. An oyster seller of Fig St Pyrmont, he was charged with selling 1 cwt of butter, part of 252 cases stolen by a truck driver from Norco. Trammell was fined £5 for receiving plus £5 for selling it without coupons.

Trammell died at Campsie in 1966.

Lyn Collingwood
Historian

Primary sources: Sydney *Sun* 15 April 1922 p. 4; Sydney *Sun* 3 May 1922 p.2; *Canberra Times* 10 Feb 1945 p. 2; *Canberra Times* 20 Feb 1945 p. 4; *Wagga Wagga Daily Advertiser* 20 Feb 1945 p. 6.

For more on this story, go to:

<http://www.kait8.com/story/32501913/the-great-escapes-paragould-historian-uncovers-truth-about-100-year-old-murder-case>.



James Henry Trammell in 1911. (Source: Erik Wright)

'Who lived in your street?' By Lyn Collingwood: Alfred James Shearsby (1872-1962)

Alfred was born at *Leamington*, named after the Warwickshire birthplace of his father William, a tailor and robe maker. The cottage is now 130 Glebe Point Rd between Mitchell St and St Johns Rd, and not to be confused with other houses built on Glebe Point Rd: *Lymington* in the same area and a later *Lymington* on the Toxteth Estate.

Aged 21 William Shearsby had landed in Melbourne in 1855 aboard the *Ralph Waller* with his mother Elizabeth Barris Briley, stepfather John and half brother Edmund, having survived a near shipwreck when the migrant vessel struck an iceberg in the Southern Ocean. By 1859 William had moved to Sydney where at St James' Church

in the city he married Irish-born Margaret Chapman, a niece of Michael Nason Chapman, painter and paper hanger, Glebe MLA and Sydney Mayor. Margaret had arrived with her parents on the *Calcutta* in 1838.

The couple's first four children were born at Surry Hills and George St in the city: William Edward (1863-1939), Florence Marian (1865-1931), Edward Jasper Chapman (1867-1934), Margaret Mary (1868-1910) and Edith Victoria (1870-1955). Born at Leamington were: Alfred, Kate Charlotte (1874-1948) and Joseph John Nason (1877-1955). Sydney Cook died aged three months in 1876 and a premature son was stillborn in 1881. By 1903

William and his wife had left *Leamington*. They then lived with their daughters Kate and Edith at 35 Avona Ave and 208 Glebe Point Rd, and by time of their 50th wedding anniversary the four were at *Berylea*, 50 Ross St Forest Lodge. Here Margaret died aged 76 on 16 May 1913; her widower died aged 84 on 14 September 1919 at *Hazeldean*, Hereford St. They were buried in the Anglican section at Rookwood.

Alfred was educated at the overcrowded Glebe Public from 1879-84 when Charles Flashman was headmaster. In contrast to a fellow pupil who was handcuffed by his father to a desk every morning, Alfred was a keen student. He went on to Fort St, making the long trek to Observatory Hill on foot. After leaving school he joined the Australian Joint Stock Bank and was in 1899 posted to its branch at Yass, where he settled permanently. Both Alfred and his older brother Edward Jasper, who moved to Melbourne as an employee of the Union Bank, became skilled amateur artists, their usual subjects bushland scenes.

In 1903 Alfred left the bank. Five years later he married Ethel Grace Chambers at Wargeila, near Yass. Their daughter Grace Ethel was born in 1910. After she retired from teaching his unmarried sister Edith went to live with her brother in Yass.

In partnership with Yass businessman Charles Howard, Alfred founded Howard and Shearsby photographers, a firm which rescued and republished the work of earlier Yass photographers, recorded events such as the building of the Burrinjuck Dam and the founding of Canberra, and attempted to capture the image of every Yass recruit for the First World War. Alfred Shearsby was a keen philatelist, secretary of the Yass/Canberra/Jervis Bay Railway Decentralisation League, secretary of the Yass District Chamber of Commerce, and a supporter of the Yass Mechanics' Institute.

Alfred developed a passionate interest in geology after meeting Professor Edgeworth David and his students at *Euralie* outside Yass in 1900, an encounter which led to a lifelong association with Sydney University and museum geologists and palaeontologists. In 1906 his *Operculate Corals from NSW* was published in the *Geographical Magazine* and in 1912 *The Geology of the Yass District* appeared in the journal of the Australasian Association for the Advancement of Science. The A J Shearsby Prize for Geology was set up in 1958 for a top secondary school student.

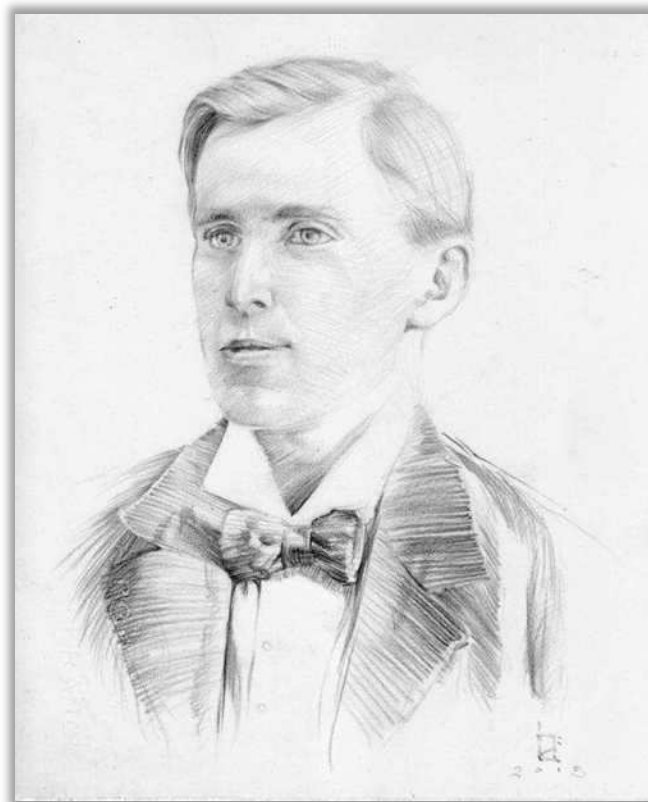
Glebe geologist Anton Crouch met Alfred in the mid 1950s: 'In those days geology students were a sturdy lot and, on a Friday night, I and a couple of friends hitched a ride on a goods train to do our own Yass excursion. We slept at the railway station and sought out Mr Shearsby on the Saturday. He

was quite old – I'd say late 70s. He was very proud of the fact that Edgeworth David had been a friend and he was happy to take us on a brief fossil-hunting walk to find some trilobites. Even then the sites had been thoroughly picked over and we found only a few tail fragments. He was a keen amateur palaeontologist – he identified two new species of the *Silurian coral Rhizophyllum* and has species of *Spongophyllum* and *Cyathophyllum* named after him. The geological feature "Shearsby's Wallpaper" is named after him. Near Yass, it is an outcrop of Lower Devonian limestone that is world famous for its assemblage of vast numbers of the fossil brachiopod *Spirifer* (*Spinella*) *yassensis*. The stratum was originally horizontal but is now sub-vertical due to tectonic activity. Hence the name "wallpaper" '.

Alfred Shearsby's story is planned for publication in a forthcoming book *A J Shearsby, Yass. Life and times of Alfred James Shearsby 1872-1962, historically important photographer, geologist & citizen* by local historians Peter R Bindon and Anthony J MacQuillan.

Lyn Collingwood
Historian

Sources: NSW cemetery records; NSW electoral rolls, NSW registry of births, deaths & marriages; newspaper entries retrieved through the NLA Trove website; personal information; Sands Directories.



Alfred Shearsby as a young man. (Sketched by Kim Nelson from a photograph)

Community Matters

Centipede's Sunset Soirée raises much-needed funds

CENTIPEDE



On the evening of Friday 21 October the Friends of Centipede again hosted the annual Sunset Soirée at the Glebe Rowing Club in Ferry Rd.

The evening was balmy, and the company of the sixty plus guests was congenial and enjoyable.

Emcee for the evening, Verity Firth, kept everyone engaged in the activities that interspersed the enjoyment of Ridz Mopur's delicious canapés, washed down with a bubbly or two, while swaying to the rhythms of Daniel and Phillip from *Edama Ruha*. There was a multi-prize raffle which, when drawn, gave the many lucky winners meal vouchers at several Glebe restaurants, books supplied by Leigh Sales, a red glass heart from the Glass Gallery and a voucher for a floral arrangement from Hayfever Flowers.

Jason Kazarnis, a personable wiz-auctioneer and now a regular at this event, persuaded five people to outbid all others to claim one of the auction items donated to this year's function. They included a year's GoGet membership, a photography package from Milk and Honey, two original artworks created especially for the event by local indigenous artists Aunty Kath Farrawell and Candace Trindall, and two tickets to *The Faith Healer* at the Belvoir. Additionally there was a silent auction with items from Cincotta Chemist, Fernwood Gym, Broadway, Stevie English Hair, Nature's Energy, and Taronga

Zoo being competed for. Friends of Centipede would like to thank all of its sponsors for their generosity in supporting Centipede in this way.

The highlight of the evening was a presentation by Snr Constable Renee Fortuna from Glebe Police, who described the program and progress of their youth initiatives at work in Glebe, that aim to encourage otherwise alienated youth to continue their education and aspire to bright futures. It is an amazing program and one that continues the important community building activities of Centipede, Treehouse at Glebe Public School, the school itself, and the Youthies. Our community is indeed blessed to have these support networks caring for us and our children.

After the fun and games which followed the talk and auctions the raffle draws took place. There was considerable support for the winner of the door prize, a meal at The Boathouse, by none other than our Ridz, our chef for the evening and a Centipede father. So, as people wandered off home after a very enjoyable and worthy evening out, Brian, the Centipede treasurer, indicated the event had raised almost \$6,000 for Centipede. With the support and involvement of parents and users of the Centipede service this year the Soirée has certainly become a community-wide event. I'd like to extend my personal thanks to everybody who contributed to its success.

Janice Challinor
Convenor, Community Development

Video of the Robyn Kemmis community event in Glebe

In addition to the formal Memorial Service for the late Robyn Kemmis that was held at the Sydney Town Hall in February, a local community event was also held in Glebe at the RJ Foley Rest Park on 1st May.

Members of the local community were invited to share their memories of our fellow Glebe Society member, a friend to many in Glebe, and Deputy Lord Mayor.

A video was made of the event by Phil Young, edited by Allan Hogan.

The video is now available for viewing online at the Society's YouTube channel:

<https://www.youtube.com/watch?v=gpiODEH2s3M>.



Nick Hespe and Kate Brennan speaking at the community picnic in honour of Robyn Kemmis (image: Phil Young)

Glebe Youth Service – Management Team Positions



The GYS Management Team works with the GYS team to set the organisation's strategy. It also manages the organisation's funding, finances, legal compliance and risks. We have an

opportunity for two people to join us.

We are looking for people who have a commitment to creating a more equal and empowered Glebe community, especially for young people. We are particularly interested if you have experience in one or more of the following:

- Strategic planning, ideally with community organisations.

- Increasing organisational sustainability through effective relationship building and networking.
- Experience in financial management – ideally as a Treasurer of a board.

For more information on the Glebe Youth Service, please visit www.glebeyouth.org.au.

If you are interested in shaping the next exciting period for the GYS, please send Christina an email by 17 November with:

- Your CV.
- A short (maximum 1 page) summary of what you would bring to the GYS Management Committee.

Greg Dwyer
Glebe Youth Service

Glebe, Naturally

News from the Blue Wrens

John Street Reserve

Kevin Simpson, Landscape Architect, *Design*, whose firm has recently completed the establishment of the habitat garden in John Street Reserve (see photo of blue wren themed bird bath), has summarised their work as follows:

John Street Reserve is a small pocket park located on the old factory footprint of the Abrams' Co-Operative Broom and Brush Company in Glebe. The factory closed in 1982 and Leichhardt Municipal Council created the original park shortly afterwards. Our improvement works completed in 2016 are the first major works to the reserve in over 30 years. Due to its industrial past the works included extensive soil testing and remediation in line with environmental standards.

More native plants and improvements to lighting, seating and accessibility were made. We also introduced information signs about the reserve's ecology and history.

*By creating diverse habitat in the reserve it will encourage native species to colonise, particularly the superb fairy-wren (*Malurus cyaneus*), commonly known as blue wren. Habitat areas are marked with protective fencing.*

If you look carefully, among native grasses and bushes behind the fencing you will see glimpses of sandstone and terracotta piping

that was salvaged when the reserve was built. These relics have been left to provide habitat for animals such as lizards where they can bask in sunlight or hide from predators.

As part of the City's urban ecology action plan, creating habitat pockets and corridors is vital in our efforts to increase native species numbers and maintain our unique biodiversity in the urban environment.

The extensive new plantings in the Reserve are being watered by local residents. There is, however, a continuing problem with owners not keeping their dogs leashed while in the Reserve and also not picking up their animal's faeces – residents will be writing to the City requesting that an additional dispenser for plastic bags used to pick-up faeces be installed at the northern entrance to the park as well as additional signage stating that dogs should be kept on a leash.

Recent bird sightings in Glebe's parks

In September, Jenna Reed Burns 'spotted a brush turkey (*Alectura lathami*) on my way to Glenmore meats via the road that runs beside the light rail (Railway St). Both I and my two dogs could not believe our eyes – it was in full breeding plumage (with bright yellow wattle and red neck band). Amazing that it's warm enough in Sydney to have brush turkeys, but worrying as they do gardens a lot of damage.'

Robert Hannan also saw a brush turkey in Ernest Pederson Park in Ferry Rd and reported that a masked lapwing (*Vanellus miles*) hatched in William Carlton Gardens on 10 October.



Blue wren themed bird bath in recently completed habitat garden in John Street Reserve. The adjacent inscription reads 'Whatever the bird is, is perfect in the bird ... Whatever the bird does, is right for the bird to do. Judith Wright 1915-2000.'

News from Bushcare groups

The Friends of Orphan School Creek Bushcare Group held a working bee to remove weeds and to plant 25 tube stock on Sunday 9 October. A seed collection day will be held from 9am to 11am on Sunday 27 November and all members and friends are welcome to attend (please telephone Judy Christie [0437 693 372] if you are coming).

The Ferry Road Bushcare Group (Ernest Pederson Park, William Carlton Gardens and Quarry Lane) had weeding days, which included removal of *Celtis australis* ('hackberry') seedlings, on 10 and 16 September and 8 October, and 50 *Hibbertia scandens* ('snake vine') were planted; 100 tube stock of *Themeda triandra* ('Kangaroo grass') have been purchased for future planting.

A *Ficus obliqua* ('Moreton Bay Fig') in the park at the western entrance to the light rail tunnel in Victoria Rd has died. The City will be asked to prune the tree so that it can be retained as a "stag" to provide habitats for insects, birds and other animals.

Andrew Wood
Convenor, Blue Wrens

Creative Glebe

27th Annual Glebe Music Festival

Friday 21 October to Sunday 20 November 2016; www.glebemusicfestival.com

- Saturday 5 Nov. 3pm Glebe Town Hall: Sydney Antiphony. Tickets \$15/\$10.
- Friday 11 Nov. 7pm Glebe Town Hall: Deborah Humble (mezzo-soprano), Chris Tonkin (baritone), viola, and piano (John Martin) in a program including Brahms, Schumann and Wagner. Tickets \$20/\$15.
- Saturday 12 Nov. 3pm, Record Reign Hall (cnr St John's Rd and Derwent St). Free entry: Alex Palmer is a composer, arranger and performer born in Sydney and educated across the world. He studied music at the University of Cambridge, UK and Berklee College of Music, USA, and now works as a freelance musician. After a pioneering performance of looped and layered music at the Spectrum Now Festival in the Domain in 2015, Alex uses a range of instruments to create his signature sound. As a cellist, singer, guitarist, pianist and flautist, the possibilities are endless.
- Sunday 20 Nov. 3.30pm Great Hall, University of Sydney, free entry: Concert for St Cecilia's Day. Amy Johansen (organ) and Josie and the Emeralds. Proceeded by carillon in the

quadrangle at 2pm, optional tour of the carillon at 2.45pm and afternoon tea in the ante-room at 3pm.



Alex Palmer (image: <https://ajepalmer.com/>)

Insights into the mind of Bernard Smith, with his biographer, Sheridan Palmer

In the July edition of the *Bulletin* (No 5/2016, p.4), we reported on the release of two new books on the legacy of Bernard Smith.

Sheridan Palmer, who wrote one of those books, the biography, *Hegel's Owl: The Life of Bernard Smith*, will be speaking at Gleebooks on Monday 31 October.

The talk 'will look at some of Smith's celebrated and contentious qualities that made him one of the most original and brilliant cultural historians of the twentieth century, a man who fearlessly helped steer Australia's art and cultural identity to where it stands today'.

When: Monday 31 October, 6pm for 6.30pm.

Where: upstairs at Gleebooks.

Cost: \$12/\$9 concession, Gleeclub members free.

Bookings:

<https://gleebooks.worldsecuresystems.com/BookingRetrieve.aspx?ID=267322> or phone 02 9660 2333.



Sheridan Palmer, author of 'Hegel's Owl: The Life of Bernard Smith'.

(image: <http://www.powerpublications.com.au/>)

Reminder

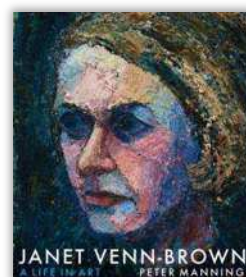
Launch of Peter Manning's *Janet Venn-Brown: a life in art*

This launch takes place at Gleebooks on 3 November at 6pm for a 6.30pm start.

Both Peter and Janet will be speaking and answering questions.

For bookings:

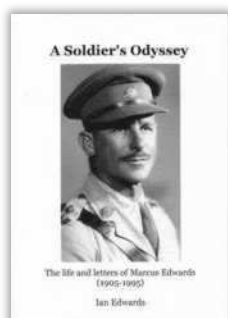
<http://www.gleebooks.com.au/BookingRetrieve.aspx?ID=269778>



New book by Peter Manning (image:

Error! Hyperlink reference not valid.)

Book Review: 'A Soldier's Odyssey: the life and letters of Marcus Edwards (1905-1995)', by Ian Edwards



A long term Glebe Society member, Ian Edwards, had embarked on a project about his father and three uncles when his cousin, Christine, discovered and transcribed a long letter which her father (Ian's uncle), Marcus, wrote to his wife on his way home from England after the Second World War.

As a result, the family project was put aside for work on the Marcus material. Further correspondence with Marcus' family and his diaries were discovered and transcribed by Christine.

Ian has placed these letters in both the family context and their historic background.

While being the only one of his family not to go to university, Marcus displays in his letters – and also in his poetry – a talent for writing; and he reveals himself as an interesting character, reflective of the values of the time and of his Presbyterian family background ... and with a gift for describing and analysing events.

Marcus was married to well-known pianist and composer Miriam Hyde. He himself played the violin, so they shared musical interests.

He enrolled with the Australian Army and joined the 2/1 Field Regiment, rising to the rank of

Bombardier in 1940. His war experience was in Palestine, North Africa, Greece and Crete, where he was taken prisoner, to spend the remainder of the War in a German prison camp. His letters bring to life vividly his experience of the war both in action and as a POW, with shrewd comments on the broader political situation and later on the experience as a prisoner. He is perceptive about the inter-personal stresses that develop in a group living in close proximity over an extended period.

Ian's decision to make his uncle's writings more widely available is well justified.

Copies of the book are available at Gleebooks (\$16).

Jeanette Knox

Landscapes of Reg Mombassa

A new book has been released that features the distinctive work of local legend, Reg Mombassa (aka Chris O'Doherty).

The book is titled *The Landscapes of Reg*

Mombassa:

Antipodean Scenery: Views from the eyes of a car; it's now available in bookshops, including from Gleebooks where it was recently launched.



Events

Upcoming Glebe Society event: 'Smartphone 101' session



Have you considered coming along to the Glebe Society's smartphone education evening? If you've got an iPhone, iPad or an Android phone (such as a Samsung Galaxy, HTC etc), and would like to get more out of it, you're sure to benefit from this event.

When: 7pm, Thursday 24 November.

Where: *Benledi*, 186 Glebe Point Rd.

Cost: \$15 including refreshments.

Bookings and information: If you'd like to come but have not already booked, you will find the booking form in last month's *Bulletin*. You can also book via www.glebesociety.eventbrite.com, by email to communications@glebesociety.org.au, or by phone on 0402 153 074.

Phil Young and Virginia Simpson-Young
Communications subcommittee

Christmas Gathering

Join us in the elegant main hall of the Glebe Town Hall for our Christmas Gathering. This wonderfully restored building was built in 1880 and is a beautiful example of the Victorian free classical style with its elegant rooms. The Glebe Town Hall has historically played host to social and civic events from wartime balls and evening concerts to debating clubs and political meetings.

Where: Main Hall Glebe Town, 160 St Johns Rd Glebe (1st floor lift access).

When: Sunday 11 December 2016, 5-9pm.

Cost: \$55 per person.

Select from a delicious cocktail menu from the renowned Yuga Flowers and Café in Glebe with gourmet cheeses, seafood with wines, beers and soft fruity punch.

Bookings for the night are essential and close on Friday 3 December. You can book using the flyer in this *Bulletin*, by direct deposit to the Glebe Society or online at www.glebesociety.eventbrite.com.

The annual Glebe Society raffle will be drawn on the night, with fabulous prizes which include two tickets to the wonderful Lord Mayor's NYE party. Tickets will be available at the Glebe St Fair, using the flyer in the December *Bulletin*, from Committee members and at the event.

We look forward to seeing you there!

Judy Vergison, Events Coordinator



Glebe Voices

Next *Glebe Voices* – please put this date in your diary!

Where: Yuga Café St Johns Rd Glebe (between Forest and Lodge Sts Glebe)

When: Tuesday November 29 at 6pm

Speaker – Dr Garner Clancey, Senior Lecturer in Criminology at the University of Sydney Law School. Dr Clancey's topic is: **Crime, Community and Collective Impact in Glebe.**

Garner will focus on Glebe and will talk about significant declines that have occurred in various crime categories in our area. He will consider the particular dynamics in Glebe that might have contributed to these falls and will mention some trends that might in the future impact on crime in the area. Drawing on recent Glebe-based research, the role of community and community-based organisations will also be discussed.

Before joining the Sydney Law School in 2011 Garner worked as a crime prevention consultant and also in criminal justice.

He is associated with several tertiary institutions in Australia and the UK and is currently the Vice President of the Australian Crime Prevention Council.

This event is being hosted by Yuga Café, and although entry is free, attendees are encouraged to order from the choice of light meals and beverages available to support our hosting café.

Carole Herriman



Dr Garner Clancey (image supplied by Dr Clancey)

Thirsty Thursdays

Glebe Society members and friends are invited to meet in restaurants in and around Glebe, usually on the first Thursday of each month, to eat and talk with other people who live in Glebe.



Christine Bates chooses the restaurants and menus. We try to pick places where we can share dishes, and have eight or so people at each table.

Our November dinner is on the same evening as the launch of Peter Manning's *Janet Venn-Brown: a life in art*, 6pm at Gleebooks. The venues are close together, so our dinner will be booked for 7.30 that evening.

Put these details in your diary now:

- On Thursday 3 November at **7.30pm** we will meet at *Otto Noorba*, the new Turkish Restaurant at 79 Glebe Point Rd.
- On Thursday 1 December at 7pm we will share a meal at *Darbar*, the Indian restaurant at 134 Glebe Point Rd.
- And on Thursday 5 January at 7pm we will continue the tradition of going to *The Nags Head*, 162 St Johns Rd (corner Lodge St).

Please email or ring Edwina on 9660 7066 by 6pm on the Wednesday before to let us know if you are coming, or if you are likely to be late.

Edwina Doe and Christine Bates

Players in the Pub: a special edition!

THE MAYORAL PROCESSION: odds and sods from the City's past; an illustrated history of Sydney's civic leaders. (In case you missed it when staged in Trickett's Ballroom -- or want to see it again!). Presented by Lyn Collingwood, Kim Knuckey & Alice Livingstone

When: 7pm Wednesday 16 November

Where: Upstairs Toxteth Hotel, cnr Glebe Point Rd/Ferry Rd Glebe

Cost: Free admission. Donation box; \$20 meal + drink specials. The kitchen is open from 5pm.

Good Neighbourhood BBQ

The City of Sydney and NSW Police are hosting a Good Neighbourhood BBQ in Glebe on Sunday 6 November.

The get-together will include *Feature Creatures* mobile reptile show, children's activities, a free barbecue, live music and information about local safety.

When: Sunday 6 November 2016 from 11am to 2pm.

Where: *Elephant Park* (soon to be officially named *Robyn Kemmis Park*), 5 Glebe St Glebe

For more information:

<https://whatson.cityofsydney.nsw.gov.au/events/good-neighbourhood-bbq-glebe-2>



(image: City of Sydney)

Get In the Loop: Knitting Circle @ Glebe Library

If you're looking to meet new people, come along to the Library's knitting circle – it's a great opportunity to share skills in a welcoming environment. You can work on your own project or knit for a cause like the annual *Wrap with Love* project, which donates warm knitted squares to communities in need.

Knitters of all levels are welcome. You are asked to bring your own wool and needles along, although the Library has limited materials available for loan.

When: 11am-1pm, Fridays 4 & 18 November; 2 & 16 December

Where: Glebe Library.

Bookings not required.



Exhibition: Encástica Contemporánea by Randal Arvilla

This exhibition runs from 25 October to 6 November at the Glass Artists Gallery

Artist Talk: 2pm Saturday 29 October

Encástica Contemporánea will present the latest encaustic work of Randal Arvilla from 25 October – 6 November, curated by Susannah Smith.

Randal Arvilla is a Costa Rican Australian painter and sculptor.

Randal will describe his process and the history of encaustic technique at the Artist Talk on 29 October. Arvilla will discuss the wide-ranging influences of his Costa Rican heritage, his family and experiences of loss, his interest in typography and design, and encounters with the work of Jasper Johns and the American Abstract Expressionists.



Artwork by Randal Arvilla, on exhibition at the Glass Artists Gallery.

For Your Calendar

21 October - 20 November. *27th Annual Glebe Music Festival*. Various locations.
 Monday 31 October, 6pm for 6.30pm. Sheridan Palmer on Bernard Smith, upstairs Gleebooks.
 Thursday 3 November, 6.30pm. Book launch, *Peter Manning's Janet Venn-Brown: a life in art*. Gleebooks.
 Thursday 3 November, 7.30pm. Thirsty Thursday: *Otto Noorba*, 79 Glebe Point Rd.
 Wednesday 16 November, 7pm. Players in the Pub: The Mayoral Procession. Upstairs Toxteth Hotel.
 Sunday 20 Nov, 10am. *Glebe Street Fair 2016*, Glebe Point Rd.
 Thursday 24 November, 7pm. Glebe Society Event: 'Get more out of your Smartphone 101'. *Benledi*.
 Sunday 27 November 2016, 9am. *Seed Collection Day*, Friends of Orphan School Creek Bushcare Group.
 Tuesday 29 November, 6pm. *Glebe Voices: Crime, Community and Collective Impact in Glebe*. Yuga café.
 Thursday 1 December, 7pm. Thirsty Thursday: *Darbar*, 134 Glebe Point Rd.
 Sunday 6 November 2016, 11am to 2pm. *Good neighbourhood BBQ*, Elephant Park.
 Sunday 11 December, 5-9pm. *Glebe Society Christmas Gathering*. Glebe Town Hall.
 Thursday 5 January, 7pm. Thirsty Thursday: *The Nag's Head*, 162 St Johns Rd (corner Lodge St).

Recurring Events

Tuesdays & Fridays, 10am to 2pm. *Have A Chat Café*. Old Fire Station.
 Tuesdays, 10.30am - 1.30pm. *Life Drawing at the Tocky*, Toxteth Hotel, upstairs.
 Wednesday morns, 8.30am. *Glebe Bushcare Group*. nr Jubilee Park, contact bluewrens@glebesociety.org.au
 Thursdays 5.30-6.30pm; *Glebe Community Singers*. Glebe Public School Hall, Derwent St entrance.
 First and third Friday of the month, 10am. *OM:NI*, Old Fire Station.

The Glebe Society Inc. Established 1969

President	Allan Hogan	02 9552 6413	president@glebesociety.org.au
Vice President	John Gray	02 9518 7252	vicepresident@glebesociety.org.au
Past President	Ted McKeown	02 9660 3917	pastpresident@glebesociety.org.au
Secretary	Jude Paul	0438 600 882	secretary@glebesociety.org.au
Minutes Secretary	Rozzie Hecker	0400 11 2610	minutes@glebesociety.org.au
Treasurer	Jane Gatwood	0488 118 355	treasurer@glebesociety.org.au
Ordinary member	Carole Herriman	02 9571 9092	carole@glebesociety.org.au
Ordinary member	Diane Hutchinson	0407 207 177	diane@glebesociety.org.au
Ordinary member	Scott Calvert	0422 297 924	communications@glebesociety.org.au
Ordinary member	Murray Jewell	0405 921 945	transport@glebesociety.org.au
Ordinary member	Margaret Cody	02 9696 9384	margaret@glebesociety.org.au
Bays & Foreshores	Lesley Lynch	02 9660 5084	bays@glebesociety.org.au
Blue Wrens	Andrew Wood	02 9660 6104	bluewrens@glebesociety.org.au
Communications	Virginia Simpson-Young	0402 153 074	communications@glebesociety.org.au
Community	Janice Challinor	0401 505 657	community@glebesociety.org.au
Environment	Asa Wahlquist	02 9660 8261	environment@glebesociety.org.au
Heritage	Liz Simpson-Booker	02 9518 6186	heritage@glebesociety.org.au
Planning	Neil Macindoe	02 9660 0208	planning@glebesociety.org.au
Transport & Traffic	Murray Jewell	0405 921 945	transport@glebesociety.org.au
Glebe Island Bridge	Murray Jewell	0405 921 945	GIB@glebesociety.org.au

Working Groups & Contacts

Archivist	Lyn Milton	02 9660 7930	milton.lyn@gmail.com
Bulletin Editor	Virginia Simpson-Young	0402 153 074	editor@glebesociety.org.au
Events	Judy Vergison	02 9692 9200	events@glebesociety.org.au
History	Lyn Collingwood	02 9660 5817	lyncol1@optusnet.com.au
History of Glebe	Max Solling	02 9660 1160	
Webmaster	Phil Young	02 9692 9583	webmaster@glebesociety.org.au
Website technical	Peter Thorogood		support@glebesociety.org.au
Chief Tweeters	Allan Hogan & Scott Calvert	02 9552 6413	twitter@glebesociety.org.au

Highlights this Issue

BAYS PRECINCT COMMUNITY CONSULTATION AWARD: YOU ARE JOKING, AREN'T YOU?	1
NO WESTCONNEX PORTALS PLEASE!	2
PLANNING REPORT, BY NEIL MACINDOE	3
'FROM THE TERRACES', BY LIZ SIMPSON-BOOKER: A HERITAGE VACUUM	4
REARVIEW: INTERVIEW WITH DENNIS HOOLIHAN	5
JAMES HENRY TRAMMELL: A US FUGITIVE WHO SETTLED IN GLEBE AFTER ESCAPING AN ARKANSAS MURDER CHARGE	6
'WHO LIVED IN YOUR STREET?' BY LYN COLLINGWOOD: ALFRED JAMES SHEARSBY (1872-1962)	6
VIDEO OF THE ROBYN KEMMIS COMMUNITY EVENT IN GLEBE	8
27TH ANNUAL GLEBE MUSIC FESTIVAL.....	10
LANDSCAPES OF REG MOMBASSA	12
UPCOMING GLEBE SOCIETY EVENT: 'SMARTPHONE 101' SESSION	12
CHRISTMAS GATHERING.....	12
GLEBE VOICES	13
THIRSTY THURSDAYS AND PLAYERS IN THE PUB: A SPECIAL EDITION!!	13



PO Box 100
Glebe NSW 2037

No.9 of 2016 (November 2016)

Membership of the Glebe Society

- Individual member: \$45
- Joint (2 people, one address): \$55
- Household: \$60
- Concession (student or pensioner): \$20
- Institution or corporate: \$110

How to join

- Join online: complete the Membership Application on our website under 'Membership'
- Download a membership form from www.glebesociety.org.au; or
- Write to the Secretary at PO Box 100 Glebe 2037; or
- Email secretary@glebesociety.org.au



The beautiful greyhound – what will be their fate given the NSW government's racing ban reversal? (image: Pixabay)