

Glebe Public School's 150th birthday party

On 3 November 2008, Glebe celebrated an important event - Glebe Public School's Sesquicentenary. There was a full day of celebrations, starting at 7.30am with breakfast at Centipede and followed by a special School Assembly, the Lord Mayor's launch of the new school fence (see page 4), party games, tours of classrooms and much more.

The Glebe Society was pleased to support the Principal, Vicki Pogulis, who hosted the evening event for 'friends of the Glebe Public School'. This event, with funding from the University of Sydney, brought together past students and staff, as well as current parents, carers and community members to celebrate the local partnerships that support the school, and to reflect on the school's rich history. As such, it provided the Glebe Society with an opportunity to strengthen its links with the wider Glebe community.

It was a fun evening. Past students came from far and near, some from as far as Queensland. Invitations were sent out to many former students and the number who attended exceeded all expectations. The large school assembly hall was filled to capacity on the warm evening and the buzz of past students meeting up with their former classmates certainly added to the party atmosphere. Kites designed by Peter Travis, a local artist living in Glebe, were hung from the ceiling rafters and provided a colorful decoration, adding a bright feel to an otherwise utilitarian school hall.

The highlight of the evening was a theatrical revue written by Lyn Collingwood and staged with the help of three professional actors. This revue was based on material sourced from the NSW State Archives and the



Lyn Collingwood and her revue team. Photo Phil Young.



The crowded School Assembly Hall, decorated with Peter Travis's kites. Photo: Phil Young

Mitchell Library about the early years of the School and included some amusing anecdotes about past students and parents. With introductions by Lyn, the group read accounts of some of the now extraordinary events that occurred at Glebe Public School during its history. One example was of a boy whose father chained him to the school desk each day so that he would stay at school. Another story was of the teacher who sought leave from school as there was an outbreak of typhoid in her house. Another was a complaint about the noise level from the factory next to the school, which reminded everyone of traffic noise from Glebe Point Road.

Lyn's session ended with former students telling the audience of some of their memories from their school years. However one ex-student was interrupted by a member of the audience who called out 'Excuse me for interrupting, but I think I taught you at this school many years ago'. He had indeed taught him, and another old friendship was re-established, as happened with many other ex-students who attended the evening.

The informative display about the School's past and present, for all to view on the walls of the Assembly Hall, was mounted thanks to the efforts of a team of Glebe Society members who drew on information from various

Continued on next page...

Glebe Society's 2008

Christmas Party

**Yuga Café and Floral Design
172 St John's Road**

Friday 12 December, 6 - 8pm

See page 9 and the flyer.

Members of the Glebe Society know about Lyn Collingwood's interest in local history. We have been reading her articles 'Who lived in your street?' in the Glebe Society Bulletin for some time now. The sesquicentenary celebration introduced her to a bigger audience.

Reading about history is one thing, but seeing and hearing it come to life on stage added greatly to our pleasure. All members of the audience, former pupils, staff and friends of the school alike, thoroughly enjoyed the performance by Lyn and her three helpers.

- Edwina Doe, Glebe Society

... continued from previous page

sources including Max Solling's research on the history of Glebe. As part of the display, stories of some notable past students were included and more than a few people were surprised to learn that this list included such people as Frank Hurley, the famous Antarctic expeditioner and official photographer of World Wars I and II; Sir Robert Askin, former NSW Premier; Les Tanner, well known political cartoonist with *The Bulletin* and *The Age*; Lew Hoad, former Australian tennis Champion; and Bob Lay, the runner who represented Australia at the 1964 Olympic Games and reached the semi-finals of the 100m, his best race.

The City of Sydney Council kindly loaned their wonderful Glebe historical photo collection. The photos we displayed from this collection sparked memories of living in Glebe and one group of past students was noticed standing in front of the photo of the *Astor Theatre* (now known as the *Val-halla*) recalling their visits there on a Saturday afternoon.

We were especially delighted to be able to collaborate with the Wireless House Installation Project in the recording of Frank Galluzzo's stories of his childhood in Glebe. It was a thrill for Frank and his family to be able to share his memories of growing up in Glebe. An extract of the recording was displayed which included Frank's memories of his schooldays at Glebe Public School (see page 4).

The evening was very enjoyable and our thanks go to the team of helpers who decorated the hall, prepared and

served food, greeted the many guests, prepared and served food, served on the bar, and helped in the clean-up after the event.

- Katharine Vernon

I just wanted to thank everyone involved in the 150th year birthday celebrations and let you know what a wonderful time my sister and I had yesterday. We caught up with a few old friends and found a few new ones. It was great to hear the old stories and see the old photos, the 100th year celebration photo was great to see, for we are in that photo. We very much enjoyed the 'history of the school' presentation, what colourful pupils Glebe Public had (and still have I'm sure). Please thank the presenters for us again, what fun ...

- Email from Caroline, past student

School Principal says 'thanks'

Dear Liz

The school would like to thank the Glebe Society for its generous support of our Sesquicentenary Celebrations. We appreciate the good spirit and the hard work that went into our special day, it is so gratifying to see the community come together for a common cause.

Glebe Public School would also like to thank the Glebe Society for the donation of the blinds for the Assembly Hall. They make a wonderful contribution to the school, and will serve us well for many years to come.

We would also like to thank the Glebe Society for organising the Trivia Night to raise funds for the blinds. Those of us who attended on behalf of the school had a great time.

All of us at the school feel that the celebrations were a great success, and helped to build even stronger links with the community. These strong community links have a very positive impact on student learning. I am sure our students, staff and parents/ community both past and present will remember Monday 3 November as a wonderful day.

Warm regards

Vicki Pogulis, Principal
10 November 2008

Congratulations to all contributors

What was particularly satisfying about the Glebe Public School 150 year celebration from my point of view, was that it was successful on so many fronts.

The historical presentation by Lyn Collingwood and her colleagues kept the audience of well over 200 completely enthralled and adding their own whoops of amazement.

The ex-students and teachers had space and opportunity to meet up, comparing photographs and stories.

The storyboards were beautifully presented and engrossing. The space looked magnificent with Peter Travis's kites. And the food and drink catered for the unexpected hordes.

We owe all this to the talent, skill and persistence of Jan Wilson, who initiated and guided the concept; Katharine Vernon whose organisational and interpersonal skills brought it together; Tessa Copland, Glenda Woodhouse and Phil Young, who researched documents for the history and put together the storyboards; Lyn Collingwood and her colleagues, whose talent in historical research and theatrical presentation had the audience spellbound; the team from Newtown Flicks who filmed the event; Peter Travis for his generous contribution of the spectacular kites; Dorothy Davis and her team for keeping up the constant supply of food and drink; Andrew Craig for his role as MC and all the generous people who provided the smiling faces passing around food and drink.

**- Jan Macindoe
President**

The Sesquicentenary was a moving occasion and it was fascinating to hear from former students, community representatives, Glebe residents of long standing and associates of the school. It was a pleasure to attend and I thoroughly enjoyed myself ...

**Letter to the school from Associate
Professor Robyn Ewing, Dean,
Faculty of Education and Social
Work, University of Sydney**

Planning Matters

Backlash Against Planning Changes

As predicted, there was a backlash at the local government elections on 13 September against the changes to planning and heritage legislation previously outlined in the *Bulletin*. In the City of Sydney, ALP representation was reduced from three to a rump of one. The State opposition has announced its intention to repeal Section 3A, that currently gives the Minister for Planning power to call in and determine 'state significant' development, and to hold a public enquiry into planning legislation. The Society would support these actions, though in themselves they do not guarantee better planning processes.

Harold Park to move to Menangle

The Trotting Club voted overwhelmingly on 26 October to move. The Society has been anticipating this move for a long time, and there is a report on our discussions with the University of Sydney about the site in *Bulletin 7/2008*. The Society will now approach the City Council to ensure a consultative process and the best outcome, for the Tramsheds as well as the paceway. These discussions will form part of the ongoing consultation about the Glebe Urban Design Study and the new City Town Plan, which is likely to be in place before the track is vacated in two years' time.

Durham Court, 417 Glebe Point Road

The amended application for this controversial overdevelopment has been withdrawn. Given how similar the amendment was to the original proposal, this is a good result for residents and the Society.

Hellenic Herald building, 1-9 Glebe Point Road

Commissioner Bly of the Land and Environment Court held a hearing on site on 6 November. Derek Barton and I attended, and I restated the Society's long-held view that the building was an eyesore, and the pergola and lift-shaft should be demolished and the facade changed to harmonise with the existing heritage streetscape. We gave it our best shot and the City is very supportive, but the situation is made much more difficult by some

unwise decisions of Leichhardt Council before it lost Glebe to the City. Here's hoping!

61-3 Hereford Street

This proposal for six townhouses was refused by Council (see *Bulletin 8/2008*). The applicant has now appealed. Fortunately the Society was joined by a number of residents in its objection, so did not have to fight the good fight alone, as was the case with 1-9 Glebe Point Road above. I believe Council has a strong case for at least reducing the scale of the proposal.

9-11 Leichhardt Street

There is a proposal to demolish this Federation house and replace it with a modern two storey structure. The Society is concerned because the house is a contributory item in an area where a great deal of damage has already been done and more is proposed, namely the overdevelopment of the nearby Durham Court. There are also a number of Heritage Items nearby.

The City has organised an independent engineer's report on the soundness of the building, and this may be available before the *Bulletin* goes to press. However this is only one aspect of the proposal, and the Society is seeking the advice of various heritage gurus as well.

The Abbey, 156-60 Bridge Road

It seems approval of the amended application is imminent, and work has begun on clearing rubbish from *Reussdale*, which will be the first building to be restored. There are construction huts on the site.

70-72 Bellevue Street

On 16 October a concerned neighbour contacted the Society about this terrace on a double block, constructed in stone quarried from the site by William Harden in 1894. It was occupied mainly by one family, and the occupant has recently died, leaving the house in largely original condition and filled with memorabilia (and a great deal of junk) including family and workplace documents and photographs. The President, Phil Young and I visited the site on 18 October and Phil took photos. We referred the holder of the documents to Max

Solling who is currently assessing the collection.

It is not uncommon for houses to have been built from stone excavated from the site. There are a number of others, mainly in Forest Lodge. The Bellevue Street house is not listed in any book or collection on Glebe. Some, but not all, stone houses are currently on the Schedule of Heritage Items. One solution may be to make an inventory of stone dwellings to give them a special status, especially when they are not identified elsewhere. Sometimes the stone has been painted or covered over, or is otherwise concealed.

- Neil Macindoe

Glebe Point Road open for business

The upgrade of Glebe Point Road has been a very important construction that was requested by the community and supported by City of Sydney. Contrary to perception of some, the project is on time. The major phase was completed in time for the Glebe Street Fair. It has been a collaborative effort between community, Council and GMW Construction. Throughout the whole project, regular meetings have been held to keep businesses and the community informed about time lines and allow opportunities for people to voice their concerns.

Perception of some in the community was that the task was merely window-dressing and that new paving was all that had to be done. Beneath the road surface, there existed aging rusting pipes, inadequate water mains, poor drainage systems, buried tram tracks and a very poor substructure. These factors were compounded by the fact that in some sections of Glebe Point Road the Road was 600mm higher than the adjacent footpath. Much planning, consultation and thought took place before construction began. As Glebe Point Road is a major road, agencies such as the RTA, Sydney Buses, Energy Australia, Sydney Water, external contractors and property owners all had to be consulted

Continued on next page...

... continued from previous page

and works coordinated accordingly. There are some further minor works to be carried out and these will continue in to 2009. The whole length of Glebe Point Road from Broadway to Bridge Road will require sheeting to provide a finished surface. This work will be done in December and January. Practical completion will be in February, however work will continue through the following year to complete minor defects.

The fountain at Jubilee Place is currently being restored and will be reinstated once paving is completed. A security camera in Derby Place will be operational in December. Its capacity will enable views as far as Broadway, Mitchell Street and Francis Street. The City of Sydney will install decorative lighting to highlight places of significance. These include University Hall, St Johns Church and the Old Fire Station. This is also part of the Glebe Point Road upgrade. The City of Sydney, working with Glebe Chamber of Commerce, has plans and activities to assist with the revitalisation of commerce in Glebe Point Road.

Urban myths abounded in the community – ‘the project could have been done differently’, ‘it could have been much faster’, ‘it was behind schedule’ etc. What astounded me was the number of people who suddenly became experts in engineering, traffic management, construction work, urban design and project management.

Whilst this work has been a major project and at times inconvenient, our 19th century streetscape had to be upgraded to suit 21st century needs. For far too many years Glebe Point Road has suffered neglect. We have had the services of Rob Mueck, City of Sydney Project Manager, who has worked closely with GMW and the community. In addition, Grant Donohue, GMW Construction Community Liaison Officer, has been on the streets every day, providing information and assistance to all.

Now that we have reclaimed our space, we need to support our local businesses that have experienced difficulties over the past year. Glebe is a village and we own it.

- Jan Wilson

Frank Galluzzo remembers his days at Glebe Public School

Frank Galluzzo is the patriarch of the family that runs the greengrocer's shop that is Glebe's oldest business. Julia Burns and Jan Wilson recorded a conversation with Frank and his family at his home on Friday 31 October 2008. Here is an extract from Jan's report of the conversation.

Frank Galluzzo was born in 1926 in Calabrese, Italy and he arrived in Australia with his mother on 10 October 1934.

Frank started school at age eight years after a nine month stay in the Camperdown Children's Hospital whilst he was recovering from an illness he contracted in Italy. Frank spoke no English when he arrived in Sydney and he learnt to speak English while he was in hospital. He recalled that he used to speak to a man in Italian and his reply was always ‘*me no understand*’. Frank thought that that was his name.

By the time Frank Galluzzo started School at Glebe Public his English was quite good, but as he said ‘*not perfect*’. Frank went straight into 3rd class when he finally commenced his schooling at Glebe Public. He recalls that his first teacher was Mr McGuigan. ‘*He was a lovely fellow! He was good*’. Then there was a Mr Hirst, ‘*he was a bold man!*’

Mathematics was his favourite subject, particularly Mental Arithmetic. ‘*I was a wizard*’. He passed all his



Frank Galluzzo talking about his schooldays. Photo: Jan Wilson

subjects, as he said ‘*they were not very severe*’. Frank tried to do his best at school, however he did not mix with the Australian boys much as he did not understand the culture. He got teased at school because he took sandwiches from home made with schnitzel.

He spent his time with another Italian family and his friends also included Rex Conran, Thommo and John Arndell. John still keeps in touch with Frank.

He recalls that ‘*the teachers were nice*’. He got the cane when he was in 4th and 5th class for ‘*playing up, being bold, making fun of the teachers, doing things he shouldn't have been doing!*’

Look out for further extracts of Frank's story in future *Bulletins*.

The launch of *Skippedy Skip*

The crowd of school Sesquicentenary celebrators on Monday 3 November moved down to the front of the school at 12 noon to see the Lord Mayor, Clover Moore, launch *Skippedy Skip*, the public art work school fence. Artist Nuha Saad, School Principal Vicki Pogulis, past and present school students and staff and an enthusiastic collection of locals and Council staff were in attendance.

It was a relaxed and happy occasion with just a few key speakers and an extra burst of enthusiasm from the children when they were given sets of coloured pencils as a memento of the day.

Even those closely involved with the production of *Skippedy Skip* were thrilled with the final outcome. It has become a beacon among school fences, showing what is possible.

The positive significance of this artwork cannot be overestimated. The children and teaching staff now work within a colourful artwork with a joyful ambiance. It lifts the spirits of those within and those who pass by.

Many thanks to those who nurtured the vision to take it to completion - Nuha Saad, Glenn Wallace, Michael Goldberg, Jan McCulloch and others. Also thanks to those who organised the launch, including Katharine Vernon and Jan Wilson

- Susan Ingram

Celebrating 40 years in 2009

This is the fourth in a series of specially commissioned articles by people who have played a part in the success of the Glebe Society, or who have observed it from the outside. John Buckingham campaigned tirelessly for the creation of Bicentennial Park. He joined the Glebe Society in 1973. He was Secretary 1981-2, Parks and Open Spaces Convenor 1981-3, Bicentennial Park Convenor 1984-95 and President 2001-2. He was awarded a much-deserved Life Membership of the Glebe Society in 1989.

Forty Years on the Waterfront

When Bob Carr came to one of the park functions in 1988 during the development of Bicentennial Park Stage 1, he likened our campaign for waterfront open space to the Wars of the Roses - Bob's a history, not a movie, buff! He was, no doubt, conscious of the intrigue, conspiracy, murder and mayhem conducted along the way to our gaining this wonderful park. If you appreciate these qualities in your drama, then the campaign for the Bicentennial Park is right for you. If you want spontaneity as a part of your drama, then the campaign for Blackwattle Bay Park is more your style. But if the drawn out slug is more your liking, then the waterfront walkway is right up your street. These three projects will be the subject of this article. Our entire waterfront is too big a project for this article (and this writer). Each and every site around the bays has a story, but their stories are best told by others.

Looking back over the Glebe Society's 40 years (I'm fudging a little here as I can claim only a mere 36 of involvement) it doesn't seem to have been so difficult. Even if the total project is not quite finished at this stage we have, after all, been enjoying two of our major gains, Bicentennial Park and Blackwattle Bay Park for 20 and 25 years respectively, but it all seemed so difficult back then. And it is worth reminding ourselves that at the formation of the Glebe Society 40 years ago, there was only one waterfront public open space in Glebe - tiny Pope Paul VI park at the bottom of Glebe Point Road.

I've avoided researching the documentation in our archives in preparing this article - memory beats accuracy every time. Anyway, I'm not quite sure the written word would tell the real story. Notice the plaques sited in the parks tell an accurate

history, but they don't necessarily tell the real story.

Certainly, Nick Greiner was Premier and Leichhardt Council's personnel was as stated at the laying of the plaque, but these aren't the personalities who created Bicentennial Park Stage 1. Greiner was significant in our gaining Bicentennial Park Stage 2 but he just happened to be Premier when the plaque was laid for Stage 1. And while a couple of the personnel listed for Council had been great supporters of our campaign, unfortunately some listed were actively opposed to the campaign for the parks. Without dwelling on this, my point is just that the written history doesn't necessarily tell the real story. I intend to.

Some of the Real People

Alan Robertson, one of our Life Members, hasn't been around Glebe for a long time now but the value of the work he did when he lived in Glebe is incalculable. When I was saddled with the role of the Glebe Society's convenor of parks and open space, I assumed that I would have to begin some sort of audit of what we had and what we could possibly get. Not so! Alan arrived at my house one evening armed with lists. Lists of titles to properties suitable for addition to our stock of open space; lists of leases on the properties and their duration; lists of other fledgeling community organisations with interests similar to ours; lists of contacts who might be able to help further our cause. Most important of all, he came armed with a hand-drawn map of the foreshore of our bays clearly establishing the potential for waterfront open space. Despite the chaos created by the immediacy of the proposed division of Glebe by the expressway, our forefathers had the vision to look beyond the immediate risk to our suburb and develop a

vision for the future. We are indebted to Alan and the others for making us more than just a community group reacting to a succession of crises.

Tony Larkum has always been. It was he who badgered me into making myself available for the management committee 36 years ago. It was he who badgered me into becoming secretary quite soon after. It was he who was president of the Society during the time much of the spade work was being done for Bicentennial Park and Blackwattle Bay Park. It is he who even now is our Bays and Foreshores convenor. He just does the simple things that matter. I well remember Tony when Blackwattle Bay Park was just rubble intended for the development of four-storey blocks of units. The developer had title to the land. We had somehow got the notion that it should be park. It was fenced off, but Tony, and the locals, led by Eric Gidney, convinced us that it really was our park by planting trees on the site. I still recollect Tony watering these pathetic plants, not to mention tending his mangrove plants down the front. But it was enough to convince us it was our park. And wasn't it Tony who led our campaign against the dry boat storage just a year ago?

Nick O'Neill doesn't live in Glebe. Indeed he hails from Balmain, but nobody has made a more effective contribution to our waterfront than Nick. He knew of our vision for waterfront open space when all the local groups similar to ours formed the 'Four-shores Committee' to lobby for open space where previous waterfront industrial sites were vacant or were being used for non-waterfront industrial purposes. It was our good fortune that Nick became Deputy Mayor and Convenor of the Parks and Open Space Committee on the

Continued on next page...

... continued from previous page

wonderful Evan Jones Leichhardt Council of the early '80s. It was Nick who saw the opportunity of linking our vision with the millions of dollars that would be sloshing around for Australia's Bicentenary Celebrations. Nick contracted Sydney's pre-eminent landscape architect Bruce Mackenzie, in consultation with community representatives, to produce draft plans which we then, under Nick's leadership, carted around to anyone who mattered. Nick had retired from Council well before the park reached fruition, but his contribution was paramount. And I should add his role in achieving Blackwattle Bay Park was no less significant.

I suspect **Jack Ferguson** doesn't appear in the documentation recording contributors to our waterfront environment. He was Deputy Premier in Neville Wran's government, but his great work was done for us in his role as Minister for Ports where one of his responsibilities was managing the government's waterfront land assets including those owned by the government on Rozelle and Blackwattle Bays. He was the only politician who seemed to understand that goods being brought to waterfront sites by truck, stored, and then taken away again by truck did not constitute a waterfront industry. He would always listen to our arguments, our pleadings, our bleatings, nod sagely, say little, do little. But the little he did ensured the future of the Bicentennial Park and the waterfront walk. And what were these little things of such consequence? He ensured that no long-term leases were granted over the sites that became Bicentennial Park, and he handed to Leichhardt Council care and control over myriad tiny, useless but vital waterfront pieces of land that ensured the continuity of the waterfront walkway once the major sites could be secured.

Three Waterfront Campaigns

The campaign for Bicentennial Park Stage 1 (the Glebe side) lasted 20 years. The campaign for Stage 2 (the Annandale side) was to take a little longer. And while we worked very closely with the Annandale Association, now defunct, and later the Save Rozelle Bay Campaign throughout, it's best we stick to Stage 1 here.

At the genesis of the Glebe Society, Federal Road continued from Glebe Point Road straight through what is now the centre of Bicentennial Park over Johnston Creek Canal, by what was then the road bridge, to Minogue Crescent. Between Federal Road and Rozelle Bay there were unused/misused (previously waterfront industrial) sites. At the bridge there was the long-since-abandoned Purr Pull petrol storage site. From there to Pope Paul VI Park there were sites that in an earlier era had been served by lighters and had been legitimate waterfront timber millers: raw product in by water; finished product out by water. By 1969 some of these sites were abandoned. Others were used as timber storage or as non-waterfront-industrial timber workshops - in by truck, out by truck. From its inception, the Glebe Society has had a policy supporting legitimate small-scale waterfront industry in our bays, but these sites had ceased to function within that policy.

During the first fifteen years of our campaign we had no formalised plan for the potential park. We had vague ideas of what it should look like, but our emphasis was on trying to have the politicians recognise the logic of our arguments - these sites were not



being used for their zoned purpose, so they should be handed over for open space. And after all, we added, there had been a halcyon period before the threat of World War II when there had been public access to most of these sites including the earlier incarnation of the Police Boys Club with its tennis courts and the University Rowing Club right in the centre of the area we were seeking.

It was the coming of the Evan Jones/Nick O'Neill council, the approaching

Bicentenary and real plans to take to the politicians (see Bruce Mackenzie's plan next page) that gave us our boost. Suddenly we felt we were getting somewhere. No longer did we feel the politicians were just being polite listening to us. Now they were actively interested.

There were more trials and tribulations along the way: the state government's attempt to offer Stage 1 if Stage 2 were to become a marina; squatters taking over some of the buildings after the decision had been taken by the government to develop the park and asbestos discovered prior to demolition.

Although Bicentennial Park is not finished - the fountain from the original plan was deemed temporarily expendable in the interests of the budget (and replaced by four flagpoles!) - it remains the jewel in the crown. Let's hope its ambience is not lost by what is about to take place opposite, and let's hope the fountain completes it before too long. 2009 marks 20 years since the completion of Bicentennial Park (it was opened unfinished in 1988). Perhaps the fountain could mark the celebration.

The campaign for Blackwattle Bay Park, officially opened in August 1983, is my favourite. The campaign for Bicentennial Park was long, drawn out and full of intrigue and political conspiracy, but it lacked a big climax on the way to its conclusion. Blackwattle Bay Park (and the rescue

Buildings demolished in Federal Road c August 1988. Pictures provided by the author, photographer unknown.



of *Bellevue*), by contrast, suddenly happened. It too had been part of our founding fathers' plans, but the campaign for it had to follow a different route from Bicentennial Park

because the potential park site here did not involve politicians.

When the massive site, bordered by Blackwattle Bay, Cook Street, Leichhardt and Oxley Streets and the older multi-storey developments on Cook and Leichhardt Streets, was bulldozed to make way for a new development, locals like Eric Gidney (no longer of Glebe), Chris Hosking and Bob Armstrong (two old stagers) kept a close eye on any activities on the site. They worked closely with Tony Larkum's Glebe Society Management Committee invariably having their representative already on the committee make regular reports.

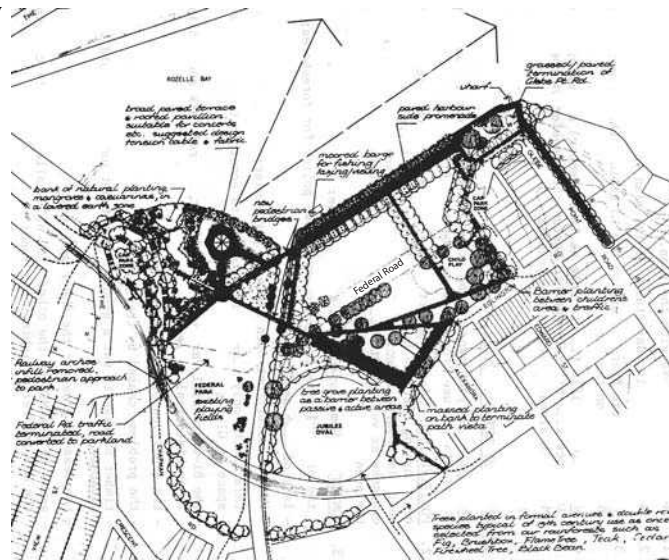
A report of great significance advised when the site was cyclone-wired into two areas: the area away from the water, Parkes Developments' Stage 1 of the development; and the waterfront area, their final stage. The locals and the Glebe Society saw their opportunity - turn the waterfront area into a quasi-park. Like all successful campaigns, viable ideas and plans were offered as an alternative to those intended by the developer. Simple landscape plans were drawn (the eventual professional ones by Stuart Pittendrigh for Parkes Developments and Leichhardt Council were infinitely better); Chris Hosking drew up plans for a viable use of *Bellevue*; and Tony Larkum and some cohorts somehow penetrated the fencing, planted trees on the site and watered them. We actually thought the site was ours! Not an unreasonable expectation, given that at this stage Pope Paul VI Park remained our sole waterfront open space.

Herein follow the reasons why I love this park so much. The next report of great significance came a year or so later. There was no time to consult at formal meetings. The message went around by telephone, 'The cyclone fence has been removed and there are bulldozers on the site!' As was inevitable, the work was to begin on a weekday. Receiving the message in many circumstances were the wives at home looking after the babies. I'm proud to say Deanne heeded the call, gathered the kids into the car, drove onto the site where the bulldozers

were poised to join the others and, sadly, ripped the sump out of my beautiful Mini.

Ah! Those were the days - environmentally conscious unions; the influence of Jack Mundy (recently made a Life Member of The Glebe Society); local activists who didn't realise they were asking for the impossible...

In short, the bulldozer drivers shut down their machines and contacted their union chiefs. No further work



took place. A couple of days later a meeting took place with the unions, the developer and Leichhardt Council in attendance, with the Glebe Society and local representatives as observers. The resolution was quick: the waterfront site would be developed as a park by Parkes Developments to a plan approved by Leichhardt Council and would then be handed to Leichhardt Council and *Bellevue* would be preserved (but not fully restored) by the developer at a cost of \$25,000. The developer could then continue with the rest of the development unimpeded. The only thing missing from the perfect scenario was the developer's failure to preserve *Bellevue*. Instead, he continued with his policy of demolition by neglect. Fortunately, a little later Leichhardt Council arranged for the Heritage Council to spend \$30,000 on that preservation/holding operation.

Again, Glebe owes a big thank-you to the Evan Jones Council and particularly to Nick O'Neill. Again he involved us in the planning for the park and ensured it became a most attractive waterfront open space.

The Foreshore Walk is all but complete. The section in front of the high school, Pyrmont Bridge Road Wharf, the Fish Markets and the area towards Pyrmont remain to be sorted. But let's not get ahead of ourselves. Let's look at what we have and how it came about. Before I get too rigid about sites, it's worth noting the boost that came with our move to the City of Sydney Council. That's not to say nothing had been achieved by Leichhardt Council. Plenty had, but the resources of the City of Sydney have ensured it has all happened more quickly.

The accelerated pace began under Lucy Turnbull, who came on our waterfront walk early in her short stint as mayor. She recognised the need to complete the transfer of the Anchorage waterfront site quickly, and the need to restore *Bellevue* which, by now, despite the holding operation 25 years ago, was in a desperate state of disrepair. The next council, under Clover Moore, has really got on with the job and sees our foreshore walk as just a part of the much

grander scheme to create a foreshore walk right around that part of the harbour's southern shore contained within City of Sydney Council's borders.

Two of the major parts of the walk, Bicentennial Park and Blackwattle Bay Park, have already been covered here, but the acquisition of some of the other significant areas now get a mention.

The acquisition of the land in front of 501 Glebe Point Road, now *Pavilions*, had an enormously long gestation. This, like all the other sites that were to become a part of the foreshore walk, was identified and tagged by our founding fathers at an early stage. Forty years ago the entire site was occupied by a series of large warehouse-style buildings, each containing wonderful timbers in their frames but with little else to recommend them. Most of the walls were brick, including all of those visible from Glebe Point Road, but once inside there was a fair smattering of corrugated iron and fibro as well. The site was much higher at Glebe Point Road than at the waterfront, but

Continued on next page...

... continued from previous page

the height differentiation was not taken up by a general slope but rather by natural rock platforms. An architect's dream!

At this stage the major building was used to receive logs (by now brought in by truck) from which plywood was manufactured. The plywood was taken by forklift down Federal Road and stored, then taken out by truck. Not a legitimate use of a waterfront industrial site!

By the late '70s, a new incarnation of Parkes Developments, the same developer who had built so many of the units in Glebe, acquired this site and applied to Leichhardt Council for it to be rezoned. His initial application was based on a huge number of small units occupying the entire site. He was advised immediately that unless he was willing to cede a substantial piece of waterfront land to Council, and unless he reduced the number of units, he would not succeed in his rezoning application. He indicated quite early a willingness to cede the waterfront, but despite many on-site meetings with Council and Glebe Society representatives, still kept coming up with plans for around 68 units. We appeared to be getting nowhere. Then suddenly, with no further discussion, he made a rezoning application to Council which included in the 'envelope' the ceding of the waterfront and 31 units over the rest of the site. The site was rezoned with great alacrity.

But that was thirty years ago. The developer had got his rezoning based on his 'envelope' plan. The sketch drawings for the buildings were interesting but impractical. They were to be two-storey terrace-style at the Glebe Point Road level, then multi-storey unit and townhouse style at the lower level. This developer, falling on hard times, sold the building site on. The next owner submitted a formal development application and building application and received approval, but he too subsequently experienced difficulties and put his development plans on hold. He leased out various parts of the buildings as 'art studios' to keep the wolf from the door, then when the real estate climate improved he ejected the tenants and sold the site on to the developer who built what is now *Pavilions*.

But none of this mattered greatly. We

had the waterfront and thus the next stepping stone along our foreshore walk.

The *Anchorage* next door to *Pavilions* provided the next stepping stone. Forty years ago there was still a disused/derelict house at the top level with an equally disused/derelict tennis court fronting Glebe Point Road. At the waterfront were the remains of a Victorian/Federation harbour pool. The entire site at the upper level was surrounded by a new, exceptionally tall, paling fence. By the early '70s approval for the *Anchorage* had been granted and demolition began around 1974.

The site comprised two clear levels separated by a sheer cliff. No attempt was made to build on the lower level and the waterfront remained for the exclusive use of the occupants of the *Anchorage* with access provided by a suicidally steep steel ladder down the cliff face. It really wasn't of much value to the proprietors.

The Body Corporate was approached consistently from its inception to ask them to consider selling the waterfront to Leichhardt Council. The decision would have to be unanimous on the part of all owners and always we got the answer back that just one owner refused. The *status quo* continued for 25 years before someone from Leichhardt Council, more persuasive than we or Council had ever been, managed to get a positive response. The conclusion of the deal still dragged until Glebe's transfer to the City of Sydney Council resulted in the deal being consummated with great urgency.

Anybody who is still reading this deserves a rest by now. I'm getting tired just thinking about it all. At this stage I'd like to make a quick reference to a few more of the sites and call it quits, but with the hope that others more qualified than I might tell the stories of these sites.

The next sites along the path before we reach Blackwattle Bay Park were referred to earlier and had come to Leichhardt Council as surplus to the government's ports needs. The exception here is the Harbour Lighterage site (now *Bridgewater*) which proved to be a saga settled in the Land and Environment Court. Here an aberration dating to Harbour Lighterage's use of the site involving

ownership into deep water favoured the developer. We did not get what we wanted but the result is better than we might have expected. The next site after Blackwattle Bay Park, on the southern side of Cook Street, was also settled in the Land and Environment Court. We were well prepared, expecting to gain a substantial strip along the waterfront but gaining a miserly strip. It is the one near-blot on the foreshore walk. Thankfully, it is followed by the old Fletchers' Container Storage site and Council's storage site, now combined as the Australand development, where we gained a waterfront area commensurate with our deserts. The High School site too is a story on its own. While we don't have complete free and open access, the alternative would have excluded us from the site whereas, as public land, Council has been able to negotiate access along the waterfront. That section of the walk is scheduled for completion in 2009.

- John Buckingham

Glebe Public School excursion

Glebe Public School Year 6 students recently went on an excursion to Sovereign Hill in Ballarat, Victoria. Sovereign Hill is an outdoor museum that recreates life on the goldfields and the Eureka Stockade and brings to life aspects of the 1800s that have contributed to the development of democracy in Australia.

The students were able to attend the camp in part due to the generosity of Glebe Society members who gave donations. As a result, all Year 6 pupils were able to attend the 'end of year' excursion. For these students it has been their only experience of an intensive excursion and an opportunity to have an amazing educational and life experience. The excursion complemented the students' learning and understanding of the study of gold in their *Science and Human Society and its Environment* lessons this term.

The Principal, Vicki Pogulis, came to the November Management Meeting to personally thank those members who donated money for the excursion.

Ongoing support of Glebe Public School by the Glebe Society is important, as it is an acknowledgment of the school's historical and educational importance in the community.

- Jan Wilson

Glebe News

PLEASE JOIN US AT
**THE GLEBE SOCIETY'S 2008
CHRISTMAS PARTY**

**AT YUGA CAFÉ AND FLORAL DESIGN
172 ST JOHN'S ROAD, GLEBE**

**FRIDAY 12 DECEMBER
FROM 6 – 8PM**



oysters
canapés
champagne
Christmas cheer
raffles
auctions
great prizes

RSVP FRIDAY 5 DECEMBER
Booking form on the enclosed flyer

The 19th Annual Glebe Music Festival - a report from Bangkok

The 19th Annual Glebe Music Festival opened with a string quartet concert by Four Fetching Females from Manchester, UK, otherwise known as The Albion Quartet. There could have been few complaints about the luscious rendition of the Ravel quartet in F major. Sunday afternoon 9 November witnessed 150 people attend the Vaughan Williams/Messiaen concert at the Great Hall - in absolute stillness for *The Lark Ascending* played by Thomas Talmacs and David Miller and in absolute concentration for the Occasional Address by one of Australia's greatest living composers, Nigel Butterley.

The Italian concert pianist Marco Rapetti explored both classical and romantic symbolism and representation of Greek mythology in piano music at Margaretta Cottage, with fascinating explanations about each piece. A huge audience appeared on Sunday afternoon 16 November at the same venue to hear him, along with Nan Heo (violin) and Matisha Panagoda (cello) perform the exuberant Dumky Trio by Dvorak and the stark Shostakovich E minor trio, followed by encores to restore equilibrium. There was all-round approval for the savoury and sweet food from Yael's Cakes of Distinction. It should not go without mentioning that the Glebe Music Festival staged a pop concert this year (and a Nepalese rock concert last year). More to follow on the remaining concerts!

Two innocuous-looking boxes were ushered into the St Scholastica's Chapel between rain showers, Sunday afternoon 23 November, for an all-Bach concert featuring some of Sydney's best-known musicians. The Concerto for Two Harpsichords in C major BWV 1028 was far from duelling harpsichords - more like Baroque Splendour, an animated conversation, counterpoint at its pinnacle.

- David McIntosh

Forest Lodge School celebrates

Forest Lodge Public School's 125th anniversary Community Day, held on 9 November, was marked by opening speeches from the NSW Minister for Education, The Hon Verity Firth and the City of Sydney Deputy Lord Mayor, Marcelle Hoff.

The day was a fantastic success and attracted widespread interest from the local community, past and present friends of the school, local businesses and politicians. It was great to see so many past students and teachers at the event. Plenty of reminiscing was done and many friendships rekindled.

For keen historians, Forest Lodge's commemorative book, *Forest Lodge Public School 125 years*, was officially launched and sold out of copies on the day. Further copies of this outstanding record of the school's history are available at gleebooks or via the bookstore's website.

- Cameron Tomes
Parent, Forest Lodge School

Christmas Party Raffle

Raffle prizes include restaurant dinners (Glebe Point Diner, Thu Thuy Vietnamese restaurant, the Nag's Head and others), cooking classes, wine, a voucher for Aboriginal art, a Christmas ham and more!

Tickets can be bought when you return the booking form enclosed in this *Bulletin*, or on the night. Advance purchase tickets will be delivered to you at *Yuga*; if you cannot attend the party we will mail your tickets to you.

Glebe Point Road banners

It is good to see the new smart poles in Glebe Point Road put to good use with a succession of topical banners provided by the City of Sydney Council.

And it was especially good that the Lord Mayor, Clover Moore, presented one of the 150th Birthday banners to Vicki Pogulis.



Photo courtesy City of Sydney

... and decorations

The City will install star pole decorations and Christmas banners along Glebe Point Road this Christmas. The festive decorations "will complement the major road and streetscape works and the City invites residents and shoppers to enjoy the beautified retail precinct".

News and Notes

Thirsty Thursdays

Members and friends are invited to meet for dinner in Glebe on the first Thursday of each month at 7pm, to eat and talk with other people who live in Glebe. We visit a different restaurant each month, varying cuisines. Put these dates in your diary now.

On **Thursday 4 December** we will visit *Café Otto*, 79 Glebe Point Road.

We will meet on **Thursday 8 January** in the Greek restaurant at *The Excelsior Hotel*, 101 Bridge Road, Glebe. I have checked and they assure me that they will be open.

On **Thursday 5 February** we will share Lebanese dishes at *Almustafa Restaurant*, 23 Glebe Point Road.

The numbers coming to these dinners are growing, so please email me or ring me on 9660 7066 by the Tuesday before the dinner to let us know that you are coming.

Welcome to New Members

The following people were accepted as members of the Glebe Society at the November Management Committee meeting:

- Berenice Buckley
- Anthony Gardiner
- Roelof Smilde

We look forward to seeing them at future Glebe Society functions.

City U3A holds inaugural meeting

The new U3A for the City of Sydney local government area (see page 5, *Bulletin* 8/2008) held its inaugural meeting at the Sydney Mechanics School of Arts on 8 November and the management committee is now working on a course program to begin in 2009. Glebe Society member Neil Macindoe was elected chair of the management committee and Ted McKeown is secretary. For more information browse to www.cityu3a-sydney.u3anet.org.au

St Helens Community Centre Program Planning Session

When: Tuesday, 9 December 2008

Where: St Helens Community Centre (184 Glebe Point Road, Glebe)

Time: 10am - 12noon (morning tea and lunch provided)

We hope to talk about the activity program at St Helens Community Centre and see how we can better meet the needs of the older people in the community by filling in the gaps. We will be conducting a short survey with the members of the community and other service providers to get an idea of their needs and this will also be discussed at the meeting.

For more information please call Jessica Swan on 9298 3050 or email jeswan@cityofsydney.nsw.gov.au.

A very useful Christmas Card



This Glebe 2009 calendar is a greeting card, DL size, featuring twelve colour photos of Glebe. The special price to Glebe Society Members, is \$4.

Contact Lisa Campano on 9660 2968 or email lisacampano@netscapes.net.au

Bulletins by email

If you would like to receive your *Bulletin* by email instead of snail mail, please email editor@glebesociety.org.au

Our Local Member of Parliament

State Member for Balmain, Hon. Verity Firth MP.

Office address: 112a Glebe Point Road, Glebe 2037.

Senior Electorate Officer: ph 9660 7586, fax 9660 6112, email balmain@parliament.nsw.gov.au

City of Sydney Councillors

Lord Mayor: Clover Moore MP

Councillors:

Phillip Black
Meredith Burgmann
Irene Doutney
Chris Harris
Marcelle Hoff
Robert Kok
Shayne Mallard
John McInerney
Di Tornai

For enquiries: Please contact the City of Sydney on 9265 9333.



Forest Lodge Public School

Home of The Glebe Society Archives

Phone 9660 3530



For your diary ...

Thursday 4 December, 7pm – Thirsty Thursday - *Café Otto*, 79 Glebe Point Road.

Wednesday 10 December, 7.30pm – Management Committee Meeting – The Old Fire Station, 115 Mitchell Street.

Friday 12 December, 6-8 pm – Glebe Society Christmas Party - Yuga Café, 172 St Johns Road.

Thursday 25 December – **HAVE A HAPPY CHRISTMAS**

Thursday 1 January – **AND AN INTERESTING NEW YEAR**

Thursday 8 January, 7pm – Thirsty Thursday – the Greek restaurant at *The Excelsior Hotel*, 101 Bridge Road.

Thursday 5 February, 7pm – Thirsty Thursday *Almustafa Restaurant*, 23 Glebe Point Road.

Wednesday 11 February, 7.30pm – Management Committee Meeting – The Old Fire Station, 115 Mitchell Street.

VISIT OUR WEBSITE – www.glebesociety.org.au

The *Bulletin* team is having a rest until the end of February. Meanwhile, the website will be updated whenever there is any urgent news for Members.

If you haven't visited the website lately, do have a look. It is being revamped under by a team led by Vicky Marquis and technical guru Peter Thorogood, and is full of information about the Glebe Society.

Contacting

The Glebe Society

Mail

All correspondence should be addressed to:

The Glebe Society Inc
PO Box 100, Glebe NSW 2037

Website

The Society has a growing website (www.glebesociety.org.au) for the information of members and anyone with an interest in Glebe.

The website will only flourish if members use the site. Send contributions or comments to webmaster@glebesociety.org.au

The Bulletin

We are glad to publish letters or articles on any matters of interest to Glebe, any topic raised in the *Bulletin*, or any issues relating to the Glebe Society. Write to the address above or email editor@glebesociety.org.au

Disclaimer

Views expressed in this *Bulletin* are not necessarily those of The Glebe Society Inc.

Bulletin deadline

The next edition of the *Bulletin* will be published at the end of February.

The deadline for contributions is **Wednesday 18 February**.

The Glebe Society Inc

Established 1969

Management Committee:

President	Jan Macindoe	9660 0208
Vice-president	Bruce Davis	9660 7873
Immediate Past President	Bob Armstrong	9660 4189
Secretary	Liz Simpson-Booker	9518 6186
Treasurer	Bruce Davis	9660 7873

Committee Members:

Dorothy Davis	9660 7873	Dorothy Hoddinott	9692 0071
Lesley Lynch	9660 5084	Jan Wilson	9660 2698

Sub-committee Convenors:

All sub-committee convenors are *ex officio* members of the Management Committee

Arts, Culture and Media	Sue Ingram	9692 8534
Bays and Foreshores	Tony Larkum	9660 7030
Wentworth Park	Anne Fraser	9660 7560

The Environment	Mavis McCarthy	9660 5119
Fortieth Year Celebrations	Lyn Collingwood	heritage@ glebesociety.org.au

Infrastructure Defect Reporting	Margaret Sheppard	9660 4121
Membership	Cheryl & Bryan Herden	9660 7371
Planning	Neil Macindoe	9660 0208
Transport and Traffic	Jan Wilson	9660 2698

Other Contacts:

Archivist	Lyn Milton	9660 7930
Blackwattle Cove Coalition (BCC)	Anne Fraser	9660 7560
Bulletin Editor	Edwina Doe	9660 7066
Event Coordination	Dorothy Davis	9660 7873
History of Glebe	Max Solling	9660 1160
History of the Glebe Society	Jeanette Knox	9660 7781
Liaison with CoGG	Bruce Davis	9660 7873
Liaison with FLAG	Jan Wilson	9660 2698
Website	Vicky Marquis	9552 2592

In this issue

- Glebe Public School sesquicentenary – pages 1 - 2
- Planning Matters - page 3
- Celebrating 40 years of the Glebe Society - page 5 - 8
- Glebe News – page 9

Don't forget the Glebe Society Christmas party on Friday, 12 December. Booking and raffle ticket order form enclosed in this Bulletin.



The GLEBE SOCIETY Inc
PO Box 100 Glebe 2037



POSTAGE
PAID

Membership of the Glebe Society

Individual member	\$45
Joint (2 people, one address)	\$55
Household (more than 2 adults and/or children, one address)	\$60
Concession (student or pensioner)	\$20
Institution or corporate	\$110

Download a Membership Form from our website (www.glebesociety.org.au/AboutTGSI/Membership/Membership_application.pdf).

Or write to PO Box 100, Glebe, 2037 or phone the Secretary, Liz Simpson-Booker, on 9518 6186.

If you have a matter that you would like to discuss with the Management Committee, please phone the Secretary.

Community Contacts

Manager-Neighbourhood Services Centre: Glebe, Forest Lodge, Camperdown, Ultimo & Pyrmont: Nick Hespe.

Email: nhespe@cityofsydney.nsw.gov.au

Glebe Town Hall Office: 9298 3190 8.30am-5.30pm Mon- Fri

Sydney City Council Customer Service

Telephone (24 hours): 9265 9333

email: council@cityofsydney.nsw.gov.au

website: www.cityofsydney.nsw.gov.au

Glebe Point Road upgrade contact (24 hrs): Grant Donohue 0414 687 101, grant_donohue@gmwurban.com.au

Dumped Shopping trolleys: Trolley Tracker 1800 641 497

Waterway Garbage: NSW Maritime response - 9563 8592