

# Glebe Society Bulletin

10/2007 November/December

## Meet the Candidates

### Local focus for Federal campaign



Residents meet the candidates at Forest Lodge primary school. Photo Bruce Davis

We can now offer congratulations to Tanya Plibersek, the successful Labor candidate for the Federal seat of Sydney. For the first time Tanya will represent the seat as a member of the government, and quite probably as a minister.

On 14 November Tanya and three other candidates – Jenny Leong (Greens), Mayo Materazzo (Democrats), and Jane Ward (Independent) – addressed an audience of at least 50 people gathered at Forest Lodge Primary School for the Meet the Candidates event organised by The Glebe Society. In the first half of the meeting they addressed questions that had been provided by the Society, focusing on issues with a special impact on our electorate: policies for sustainable cities, affordable housing, treatment of asylum seekers, and hospitals. In the second half of the meeting, candidates responded to a wide range of questions put by the audience.

If you would like to find out what Tanya Plibersek, or any of the other candidates, had to say, a recording of their initial address is available on the Glebe Society's website ([www.glebesociety.org.au/](http://www.glebesociety.org.au/)) thanks to technical know-how and dedicated effort by Bruce Davis. Notes on the main points made by speakers during question time are also available.

- Jan Macindoe

See "What Tanya said" at Meet the Candidates on page 7

### Glebe Society's Christmas Twilight Party

Book now for the Christmas Twilight Party to be held at *Lyndhurst*, Darghan Street, Glebe (eastern side of Glebe overlooking the city skyline and Wentworth Park), a Regency villa built in the 1830s, with beautiful interiors, verandahs and gardens.

*Lyndhurst*, a former headquarters of the Historic Houses Trust, is lent to us for our Christmas Party by owner Tim Eustace. This is a wonderful opportunity to meet friends for a Christmas drink and to enjoy this heritage house and champagne, oysters and delicious festive season food.

At the Christmas Twilight Party, a wonderful array of items donated by Glebe individuals and businesses will be auctioned, some by "silent" auction. The Glebe Society Great 2007 Christmas Raffle will also be drawn.

See page 9 for full details of the items to be auctioned and raffle prizes.

**Where:** *Lyndhurst*, Darghan Street, Glebe

**When:** Friday 14 December, 5.30-7.30pm

**Party tickets:** \$35/\$30 concession

RSVP by Wednesday 5 December (for catering purposes). See the enclosed flyer, and more information on page 9.

## Council meets Society on local traffic plan

*Chris Hallam has provided this summary of the meeting on the Glebe Local Area Traffic Management plan on 22 October 2007. See page 7 of the October/November Bulletin for the background to this matter.*

### Present:

Sydney City Council: Victor Franco, Graham McCabe, Richard Campbell

The Glebe Society: Chris Hallam, Jan Macindoe, Neil Macindoe

### Agenda

1. Chris Hallam thanked Council for their efforts in improving Glebe, with the Glebe Point Road Upgrade and the LATM Study.

2. Pedestrian traffic signals in Glebe Point Road at Glebe Public School: Society has previously expressed concerns about the signal option, and relied on the comment in the LATM report that this option was no longer being pursued, while final confirmation remains with Mukesh Mulhotra from Council. Council officers believe that the LATM consultants were informed of this change.

3. LATM Item 14 (i): Some concerns were expressed by Glebe Society members about signals at Bay/Kelly, to replace the roundabout. Graham McCabe explained that this option related to the need for safe cyclist facilities. There are issues with pedestrian safety with International Grammar School. All agreed that the broader issues should be reviewed at this location.

4. Consistency of Glebe Point Road Upgrade treatments: Chris Hallam requested that all Marked Foot Crossings along Glebe Point Road be treated in the same manner, with raised threshold treatments, as proposed at Wigram Road, Toxteth Road and Leichhardt Street. Consistency in treatments will "read" better for driver expectation and will provide repeated physical reminders to drivers that the street has a 40 km/

hr limit. All agreed that consistency in these treatments was desirable.

5. Francis Street: The Glebe Society has made repeated suggestions that Francis Street should be continuously one-way eastbound, from Glebe Point Road to Bay Street. Historically, it would appear that the Walker Corporation, the previous owners of the Broadway Shopping Centre, lobbied to retain the two-way section at the western end, allowing drivers leaving the Broadway parking areas to travel to Glebe Point Road (GPR) and then turn right at Broadway/ Parramatta Road. However, GPR south of Mitchell Street is currently carrying daily traffic flows of about 12,300 vpd, with two-way peak hour flows of about 950 veh/hr. RTA "Road Design Guide" recommends for Collector Roads on non-residential streets, maximum daily flows of 10,000 vpd. Environmental capacity performance measures for a residential collector street are a maximum of 500 veh/hr. The main contributor to the level of traffic in GPR south of Francis Street is the left turn out of Francis Street, which was 203 veh/hr for the Saturday midday peak, with equivalent left turn flows at Cowper and Mitchell Streets of 66 and 27 veh/hr respectively in the same period.

6. It was accepted that all implications of a one-way restriction should be assessed:

- additional traffic entering Broadway at Bay Street and Mountain Street
- reduced traffic entering Broadway at GPR (probably a more critical intersection than either of the above, in signal operational terms)
- pedestrian safety benefits of reducing traffic in Francis Street, when the Saturday midday pedestrian flow across the Francis Street Marked Foot Crossing was about 660 peds/hr.
- safety and amenity benefits in Glebe Point Road.

7. GPR/Mitchell Street: Glebe Society has recommended a Shared Zone in Mitchell Street on the eastern side. Intersection has had 12 accidents in 5 years, including 3 accidents with pedestrians. Current daily traffic flow is 882 vpd, south of Wentworth Street. Traffic Authority Traffic Facilities Guide recommends a maximum of 300 vpd for Shared Zones. However this is for zones in purely residential streets, and is based on European practice. Chris Hallam considers that Council should be proactive on this issue and not just reactive. While some opposition from the RTA might be found with Shared Zones in streets with flows in excess of 300 vpd, the problem is more the lack of satisfactory guidelines on the subject, particularly for streets in non-residential areas. With its interests in the Inner City, Glebe Society consider that Council should take an active role in developing guidelines for Shared Zones, and implementing them in a wide range of locations, not just residential streets.

8. Pedestrian safety in Arundel Street-Seamer Street-Catherine Street-Lodge Street: Glebe Society has submitted that more work on pedestrian connections from the University (Footbridge Theatre) overbridge into Glebe should be undertaken, including Shared Zone options. Part of the recommendation to Council by the officers was to follow up with this issue. All agreed that this should be followed up. Any guidelines developed by Council on Shared Zones would assist. Cyclist issues also need to be considered.

9. Glebe Society thanked Council officers for their attendance and looked forward to the next stages in improvements to traffic and pedestrian safety and amenity in Glebe.

- Chris Hallam  
The Glebe Society Transport &  
Traffic Co-ordinator

# *A reminder of when we manned the barricades*

*I was looking through my 30 year old issue of NATION REVIEW recently, as you do. This was the issue that was taken over by women and which reported on the Women's Electoral Lobby's survey of candidates before another memorable election – the one that Gough Whitlam won.*

*I also noticed this article about Glebe, which might stir the memory of some of our "older" members.*

**- Edwina Doe**

## **Rocky road for DMR**

**by Patsi Dunn**

The anti expressway movement in the Sydney suburb of Glebe has gathered momentum in the past few months. Local residents, appalled by the Department of Main Roads (DMR) vandalism in the Darghan/Darling Street area, are beginning to realise the serious threat that the two expressways pose for Glebe.

Many of the houses at this location have come under DMR possession, and the heavy authoritarian heel of the DMR boot has already crushed a large number of them, making it a dangerous playground for children. There seems to be no other way of interpreting this action by the DMR except to scare the remaining residents into moving out. One alderman of the Leichhardt council estimates that the DMR will not require the area for construction for at least another five years!

At the beginning of August a number of young people from the counter cultural group ACT (Alternative Community Telephone – 698 2652) moved into an empty house in Darling Street, which they repaired and cleaned. On August 18, at the instigation of the DMR, the police arrested them under the Summary Offences Act and charged them with trespass. On the same day, DMR workers stepped in, and with characteristic fervour, tore off the roof, and smashed the windows and floorboards.

The four squatters appeared in Glebe Court on September 7 with a barrister from the Builders Laborers Federa-

tion. The BLF had bailed them out three weeks earlier. A number of Glebe residents showed up at the court to support the squatters. They came in response to a leaflet prepared and distributed jointly by the Glebe Anti Expressway Action Group and the Leichhardt Council Anti Urban Radial Expressway Committee.

What followed in the courtroom was an anticlimax. Expecting police to prosecute, the DMR official found himself caught with his pants down - he had come along unescorted by counsel. The case was postponed until November 27 – unusual considering that charges are usually dismissed in such circumstances,

An anti expressway rally and march was held in Glebe on Saturday, August 19, the result of weeks of planning by the Glebe anti expressway activists (who comprise mainly residents) and the Leichhardt anti expressway committee. Beginning with speakers at the rally in Foley Park, the march proceeded along the main road of Glebe led by a bagpiper and horse and finished up in Darling Lane a few blocks away.

Two events of major importance occurred on that day. Firstly, at the rally in the morning, Jack Munday conveyed the support of the BLF in imposing a black ban on all further demolition work in Glebe connected with the expressway. Secondly, and more importantly, the people of Glebe took action into their own hands when they marched onto DMR owned land. Throughout the afternoon they cleared away the surface debris on two vacant sites, preparatory to converting it into an adventure playground for the children of Glebe.

Working bees have continued every weekend since. Already climbing structures have been erected, while the swimming pool, flying fox and rope swings are well under way.

The DMR, perhaps put on the defensive by adverse publicity in the media, has finally publicly acknowledged the existence of the playground. In a long and tentatively worded letter to the Leichhardt council they reluctantly gave their blessing to the playground but suggested that it be moved to new

## **Glebe Music Festival**

Thanks are due to several people for the success of the 18<sup>th</sup> Glebe Music Festival, including:

- David Miller and Caroline Henbest of the Conservatorium of Music - five ensembles from the Conservatorium performed at the Glebe Society Concert in the Great Hall of Sydney University.
- The International Development Law Organisation and the Attorney General's Department, who allowed us to have a concert at The Old Court House.
- The Sisters of the Good Samaritan, who allowed us to use their wonderful chapel. There cannot be a more perfect acoustic in Sydney than that of the Chapel of St Scholastica's at Glebe.
- The Glebe Society and the Council of the City of Sydney, for their generous support and sponsorship, the latter in the form of a Council Grant.

An apology is in order to all those who arrived at the Nepalese concert expecting Nepalese music and heard a rock concert instead. Anyone feeling short-changed by this concert is most welcome to come free to any concert of their choice in 2008.

**- David McIntosh**

sites every couple of years as the expressway advances. Local residents have their own ideas about this, and dismissed the letter as a bit of bureaucratic nonsense.

At the same time however, the DMR has ignored the BLF black ban and employed non union labour to work on houses in the area. Unnerved by the concentrate attention of fifty pairs of eyes, the private contractor turned to police for assistance against the residents gathered nearby. At present they are negotiating to end their contract with the DMR. A representative from the BLF last week extracted a promise from the DMR that no further demolition work would be carried out by private demolishers.

**NATION REVIEW, October 14-20, 1972.**

# Reporter takes walk along the “Dock of the bay”

*Kylie Davis finds seafood, sandstone and stunning scenery in the shadow of her weekly commute.*

...For the past year I've watched the transformation of Blackwattle Bay and the Glebe shore from the 504 bus, as it grinds its way across the Anzac Bridge. The City of Sydney has spent \$15 million on the last of its harbour-side land in order to connect the parks and open spaces into a single walkway. Paths have been built, gardens replanted and the magnificent 19<sup>th</sup>-century mansion *Bellevue* has been given a \$1.32 million restoration as part of the work.

Each day I've traced the progress until one day on the 504 it dawns on me you could probably walk all the way from Annandale to the Sydney Fish Markets.

So, on a humid weekend with an American guest in tow, we drive the few short kilometres to Blackwattle Crescent (*sic*) in Annandale. We have a simple mission: an appetite-stimulating walk to the fish markets, where we will lunch before a stroll home to justify the feast...

... There are families picnicking in the rotundas and on blankets, but not so many that it's overcrowded. Dogs yap and socialise along the canal; part of the park is a leash-free zone.

The gobsmacking moment is the view of the Anzac Bridge; its cables give the appearance of being inside a piano. The bridge has a scale from the bay walk that cannot be appreciated from any other angle. It looks majestic, a grand and fitting sibling to the Sydney Harbour Bridge.

The walk stretches along a sandstone boulevard edging the park and then twists its way along the harbour, past luxury apartments juxtaposed with remnants of Blackwattle Bay's industrial heritage, with glimpses of grand heritage homes...

...The walk ends at the [old] Glebe Rowers' Club, home to The Good Food Guide's one hatted restaurant *The Boathouse*. Close by is another significant marker: the Walter Burley Griffin incinerator that was once part of the council works but is now surrounded by multimillion dollar townhouses.

Here the path ends but you can divert around Glebe High School to reach Pyrmont Bridge Road, where it gets so ugly. The busy road keeps pedestrians hugging the tight footpath next to the cement works. The smell of rubbish, cement and tar on a hot day is “fragrant” but short-lived...



The foreshore walk at Glebe Point. Photo: Bruce Davis

**From *The Sydney Morning Herald* Travel Section, November 24-25, 2007**

## Grant for Wireless House?



**Letter  
to the  
Editor**

Dear Glebe Society,

I am not sure if you have seen this - but the Wireless House on D H Foley park is one of nine sites in Sydney that has been nominated for a preservation grant in an initiative between American Express and the National Trust.

But to ensure it receives a grant, we need to ensure it gets the most votes. People can vote each day (only once) for their chosen site - and if they have stories or picture they can be added to the site to entice others. Go to [www.sydneypartnersinpreservation.com.au](http://www.sydneypartnersinpreservation.com.au).

Can you please pass this on to your members - I am a resident in Glebe and would love to see our little slice of the world be awarded a grant.

**Luisa Megale**



Artist's impression of how the Wireless House will look in the future.

### *To vote or not to vote: the Glebe Society's response*

When this email was forwarded to members of the Management Committee, several people expressed a dislike of American Express's marketing ploys. We consulted Cr Robyn Kemmis, who assured us that Council has allocated sufficient funding for the wireless house project; whether the Society supported the AMEX initiative was a matter for the Society. Neil Macindoe comments that this is one of those cases where we should go along with the National Trust, even if we have reservations about the method. The Trust's efforts were crucial in saving the Wireless House and we are all greatly in their debt.

Members can vote by visiting the website, [www.sydneypartnersinpreservation.com.au](http://www.sydneypartnersinpreservation.com.au).

Also, members of the public will be invited to inspect the Wireless House from 11am to 1pm on Sunday, 2 December. The Trust will forward details to us closer to the date, but all the nominated sites will be open for inspection at that time. It will be splendid publicity for Glebe.

# Planning Matters

## A Toast to Clover...

Good news for residents this month is that pubs will not be allowed to extend their trading hours on Sundays, or to trade on Christmas Day and Good Friday.

Also good news is that the pubs and clubs' monopoly on service of liquor will come to an abrupt end. Under pressure from Lord Mayor Clover More and the general public the NSW government has introduced a Bill to allow bars and cafes to obtain a licence to serve liquor for \$500. This brings NSW into line with Victoria and also Europe. Some details are still to be released, but apparently the licence application will be made at the same time as the Development Application, when residents will be consulted.

It is likely the eventual proliferation of smaller venues in the CBD (as has occurred in Melbourne) will impact on inner city pubs such as those in Glebe. Catering for the unsatisfied demand of the CBD has led to some aggressive expansion, and a number of inner city pubs have lost even more of their old neighbourhood cosiness.

We are still waiting for details of another reform to allow small-scale performance of live music. We will continue to watch for any adverse impacts the relaxation of controls may bring.

## ...and a toast to Marianne

Marianne von Knobelsdorff hasn't wasted any time in her stay in Sydney. Not long after she arrived she wanted to know who made the unique cast bronze seats in Glebe Point Road (it was Guido Gouverneur, master blacksmith at the Australian Technology Park). Apparently one of these artworks, commissioned by the Glebe Point Road Project, had lost an arm. Thanks to Marianne it has now been restored.

Marianne also pushed me to lobby to have the crane on the Waterfront Walk restored. As a result, a brief for its restoration was announced at the Community Forum. The crane was used for removing scrap metal as part

of the Stride's Yard shipbreaking operation. Stride's was purchased by the Department of Planning for incorporation into the Glebe Waterfront Walk in the 1980s.

## More News from the Community Forum

The application for 222 student beds at the University Motor Inn site, 25 Arundel Street, has been withdrawn. Also, a proposal to erect a steel cylinder on Glebe Point Road to display posters has been deferred following protest from the Society.

There is good news about two linking pathways. The concerns Blackwattle Secondary College had about separation of the boardwalk linking Glebe Waterfront Walk to the head of Blackwattle Bay have been resolved. However, the boardwalk is not funded for completion until 2008. Also, the final design of the Larkin Street extension of the Orphan School Creek corridor has been decided. This extension of parkland will link the Glebe Foreshore Walk to within a short block of Parramatta Road.

## Discussion Paper on Planning Laws

The Planning sub-committee will respond to the discussion paper on planning laws released by the Planning Minister, Frank Sartor, on 28 November by the due date in February 2008.

The Minister claims planning approvals need to be speeded up. This is certainly not the case with the City, where applications are dealt with in a timely fashion.

Moreover, an adequate process is more important than speed. The Minister proposes extending the role of private certifiers, although in the past their performance has been grossly and notoriously deficient.

The Minister also proposes an independent commission for handling "state significant development". The Society has always taken the view that local authorities are the best for determining development in their area. If, however, it can be demonstrated a proposal cannot be dealt with locally, it would certainly be better for it to be handled by an independent commission than by the Minister.

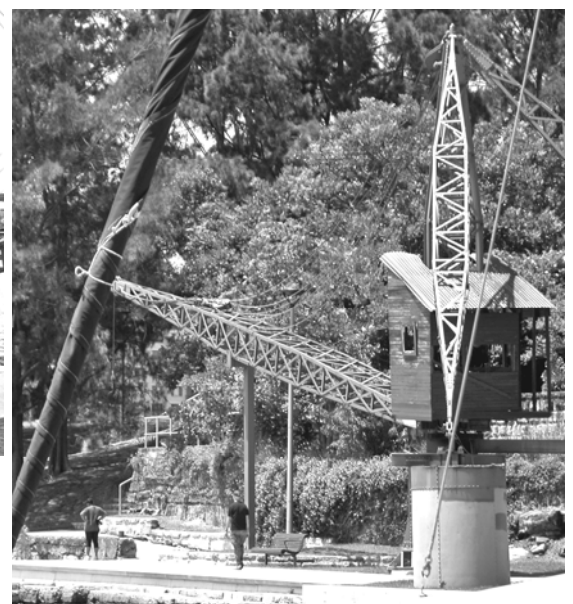
## Silky Oak, 88 Wigram Road

The Society is asking the City to investigate ways of saving this mature tree, currently in full bloom. It is affected by the court-approved townhouse development next to Cliff Terrace reported in the October Bulletin.

- Neil Macindoe



**Right:** the crane that served Strides timber yard is a prominent feature of the foreshore walk. **Above:** a closer view of the results of neglect and vandalism.



Photos: Bruce Davis

## Book review

# *Grandeur and Grit—a history of Glebe*

reviewed by Robert Darroch

Max Solling has written a superb history of the neighbourhood that has been his home for almost half a century. It sets a new standard in its genre, and stands as a benchmark against which all future local histories should be gauged.

I speak with some knowledge on this, for I myself have strong connections with Glebe. My mother grew to adulthood in Glebe, and my wife and I moved to Glebe in 1968, and helped found the Glebe Society.

I was vice-president to Bernard Smith, our Society's first president, and stood next to him on the corner of Bell and Boyce streets when he coined the name Federation for an architectural style he "discovered" in Glebe. The first Federation house he identified was *Montana*, on the opposite corner.

A few months after we moved in, we began plotting to form a preservation society in Glebe, following the example of the Paddington Society and Balmain Association. Max, already active in the local community, had lived in Glebe for eight years, and was an early recruit to the cause.

We held at least one of our initial meetings in his "digs" in Glebe Point Road. He was, I recall, studying geography at Sydney University, where he had obtained a law degree, and was working daytime for the Maritime Services Board. This book is a splendid testimony of his life-long commitment to the urban geography of Glebe.

Max has seen Glebe transformed from an inner-city slum pre-1968 to what it is today – one of Sydney's most sought-after inner suburbs, still substantially intact, and well on the way to being returned to its pre-1900 grandeur, when two of its three parts were highly-desirable places to live.

Before I read Max's book, I was under the impression that I had a good picture of the sort of place Glebe was, prior to 1968. But Max has produced what can only be described as a treasure-trove of fact and detail, almost all of which is new to me.

If only I had been aware then of what Max has revealed of Glebe's story, how much more would I have appreciated the richness of the people, precincts, buildings, and culture of the area we chose for our first home. Fortunately, present-day Glebites can remedy this lack by reading Max's book, and thus better relish the place they are lucky enough to live in.

The story of Glebe is a story of contrasts. Like Gaul, it is divided into three parts: the "working-class" area between Parramatta Road and St Johns Road, the middle-class area between St Johns Road and Toxteth Road, and the better-off area of the Toxteth estate and Glebe Point (and, earlier, the waterfront-mansion area around Blackwattle Bay).

Max chronicles how these three precincts – the legacy of early development, church ownership\* and later sub-division – interacted. He interweaves personal and cultural history with the story of buildings and institutions. This is very much a social history, too.

The main title of his book – *Grandeur and Grit* – hints at the heart-rending stories of poverty and inequality that characterised much of Glebe after 1900, when large areas of it slid into slum-like degradation.

His stark portrait of Glebe's working-class, Labor-voting, significantly-Catholic environment is, however, relieved with details of their valiant efforts to make life as pleasant as possible in their circumstances: their street culture, their sports and past-times, their pub life, their extended families and community spirit – their grit, in fact.

There are harrowing passages that bring that grim era vividly into focus – like his story of the midwives in the St Phillip's estate, part of whose role was to take away unwanted babies and store them in fruit boxes until they starved to death, and the sweat-houses set up in abandoned mansions

---

\*Originally what became "Glebe" was "The Glebe", which comprised 400 acres set aside by Governor Phillip on the orders of the Home Government, and the farming of which was expected to support the colony's first Anglican minister, the Rev Richard Johnson, but which was later sold off or converted to cheap housing. Other adjacent areas, such as the Toxteth estate, were given to prominent citizens by way of land grant or sale, thus, as Max explains, creating the suburb's split character.

by the churches to exploit and provide dubious refuge for those who fell out of the net of family and community.

For me, Max's chronicle of the politics of the area is of special interest. Pre-1900, it had been a conservative bastion, lorded over by George Wigram Allen, owner of Toxteth House and the surrounding Toxteth estate, whose successors were slum-landlords. But after 1910 it turned Labor, with a strong Catholic tint.

When we ourselves moved in, the local political boss was "Doc" Foley, then president of the Glebe Point branch of the Labor Party. However, his power was being challenged by Les McMahon, a right-winger and deputy Mayor of Leichhardt, who later became the local MHR.

What I did not know, until I read Max's book, was that "the Doc" had been a strong supporter of Jack Lang, and that Glebe had been in the 1930s and 40s a Lang bailiwick, and thus a stronghold of the left. I recall now that my mother had been very praising of Lang and Jock Garden and their "good work" in Glebe during the Depression.

Yet, by 1968, the Doc's grip on Glebe was slipping, and around the housing estates above Wentworth Park graffiti had broken out declaring "Doc Foley Wears Lace Underpants" – never a good sign, politically. Max is particularly informative about what happened post-Doc and post-Les, when politics in Glebe again drifted leftwards. However, I wonder if Max is right in the naming of Foley Park – when we arrived, I'm pretty sure it was still Hereford Park. But he knows more about it than I do.

An indication of the relevance of Max's book is the way it directs new light on familiar things. For example, the house where my mother grew up in Forest Lodge – 129 Wigram Road – is still there. But when, in 1968, we moved into 24 Toxteth Road, my god-mother came to visit us. When she saw where our house was, she remarked that when she met my mother she was living further down the road in what she identified as a respectable Italianate villa, just up from Harold Park. At the time, I didn't think much about it.

But Max's book has suddenly exposed a bit of family history I was not fully aware of. He points out that the streets between St Johns Road and Toxteth Road were occupied, in the

1930s, by the better-off shopkeepers and other middle-class residents who had remained in Glebe, and who tended to colonise that middle precinct.

And now I recall that my mother indeed had been previously married to a local Glebe Road chemist (I suspect it was Mr Jurd), and so must have moved up in the world from a slum-like dwelling in Forest Lodge to the middle-class area of the Toxteth estate – and our street.

Thank you, Max, for that insight. I hope your handsome, well-illustrated and deeply-researched book sells like hot cakes. It deserves to.

**Grandeur and Grit—a history of Glebe** by Max Solling. Published by Halstead Press, 293 pages. Available to Glebe Society members at the special price of \$42.95.

\* \* \* \* \*

**Bernard Smith, the Society's first president has congratulated Max.**

**He wrote (in part):** *Thank you so much for that wonderful book you've written on the history of Glebe. I was very, very sorry that I could not come to the launch because of my age. I find it best not to travel by air, or any other way for that matter.*

## The Candidates: What Tanya said

An audio recording of Tanya Plibersek's response to questions posed by the Society at the Meet the Candidates evening is available on the Society's website. Below are some key points. As Ms Plibersek is now a senior member of the governing party and may become a Minister, you may wish to take a closer look at what she said.

**Sustainable cities:** With Labor's first 100 days it will set up an independent, stand-alone, body to be called Infrastructure Australia that will decide on infrastructure priorities for Australia – for example public transport. It will determine where Federal government investment should be partnered with State and local government investment.

**Sustainability:** Labor will work with the States to establish a sustainability charter to make sure decisions are socially, economically and environmentally sustainable, and will set key national sustainability targets. An independent commissioner will monitor performance against these targets

**Public transport:** Part of Infrastructure Australia Fund can be used for expanding public transport. Labor also sees the Federal government taking on a much larger role for freight transport, unclogging our existing streets like Pyrmont Bridge Road and rail lines by moving heavy freight to dedicated freight corridors.

**Affordable housing:** Ms Plibersek referred to the success of the City West Housing Project as a model for providing affordable housing. "Over my dead body will anything happen to the Glebe Estate," she said.

**Asylum seekers:** Labor will end temporary protection visas and only issue permanent visas.



Photo:  
Bruce Davis

## Un-sizzle summer for our local Superb Fairy-wrens

Outdoors in Glebe can be trying for all creatures in summer. While you and I might collapse under a tall leafy tree with a good book and a G&T or an icy beer, think of our local Superb Fairy-wrens and other little birds. They aren't likely to join us! Big trees are the home territory of big (fierce, predatory) birds. But we can help small birds survive and enjoy the summer with a few simple actions (or inactions).

First, we can let parts of our gardens grow quite "untidy". Fairy-wrens and other little birds like shady thickets, long grass and leaf litter. They will be provided with protection from predators, with shade and insects to eat. And we'll be minimising insect pests in other parts of our gardens!

Next, we can provide them with water – in a bird bath or shallow bowl, preferably rough inside, placed near shrubs so they can quickly retreat to safety but can still see if predators are approaching. A hanging bird bath can work well. We should be sure bird baths are not near

windows. So, that's a good Christmas present idea for a Glebe local!

Then, if we are inspired to work in the garden we can make it more Fairy-wren friendly by cutting off and disposing of small fruits on plants like lilly pillies (they make good jam!) cotoneasters and privets (still looking for a use for these!). Small fruits attract big predatory birds such as Currawongs.

And, importantly, we should keep pets indoors, particularly around dawn and dusk. Feeding pets indoors is important, too, as pet food will attract predatory birds. A bell on a cat's collar is NOT sufficient protection for small birds.

And we should never provide food handouts for ANY birds.

We can also productively while away pleasant idle summer hours planning to make our gardens into Fairy-wren habitats in the autumn. For information and inspiration contact [www.birdsinbackyards.net/spaces/designing-a-garden.cfm](http://www.birdsinbackyards.net/spaces/designing-a-garden.cfm).

And while you relax in your garden, keep a look out for Fairy-wrens, reporting your sightings to [glebe.wrens@gmail.com](mailto:glebe.wrens@gmail.com) or David Mander Jones on 9552 4172.

The Superb Fairy-wren Project is continuing over the summer season. The Consultant's report on the status of Superb Fairy-wrens in Glebe will be released early in the New Year. It will contain recommendations for increasing their habitat in order to entice small birds back again into Glebe. In early autumn an information package will be made available to residents and there will be a planting day to enhance the local environment for Superb Fairy-wrens. It is anticipated that the City of Sydney, and other public land managers such as light rail, will also become involved. Details of these events will be provided in later issues of the Bulletin.

- Jan Craney  
Blue Wrens Sub-committee



# Glebe News

## Champagne High Tea at *The Retreat*



Photos:  
Bruce  
Davis

In the splendid setting of the private garden of John Williams's home, *The Retreat*, overlooking the stunning water feature of Rozelle, Blackwattle and Johnstons Bays, members of the Glebe Society and friends indulged in champagne and delicious finger food. It was a warm, sunny afternoon, Sunday 4 November.

In this setting, John generously offered his expertise in commenting on the origins and likely value of favourite treasures participants chose to bring to the occasion. Twenty such items were identified and valued. The most outstanding item was judged to



be a Georg Jensen sterling silver (1925) bowl, on a waisted stand, a modern piece, designed as a sauce tureen (photo at left).

The photographs on this page demon-

strate the great interest in John's commentaries, for the owners of the treasures and for the onlookers.

Significant interest was also shown in the consumption of the drinks – champagne, white wine and soft drinks, and a wide range of delicate finger food –

chicken, smoked salmon and cucumber sandwiches, a variety of tartlets, cheeses and dips, as well as little cakes. Dorothy Davis and her team of helpers, including Katherine, Lydia, Susie and Fay, are to be congratulated, as well as Andrew and Phil for managing the bar, and general security provided by Brian, Neil and Martin.

Importantly, this event would not have been possible without the willing generosity of our host, John Williams. John's boudoir grand piano by Bechstein, circa.1920, with an electric reproducing action, was playing during our visit, and added another dimension of enjoyment to the afternoon.

The Retreat was built in 1854-6. John has lived there for just over two years, and in that time has won, for two consecutive years, the City of Sydney prize for the most outstanding garden visible from the street.

- Margaret Sheppard

## Glebe School camp

Members will recall that the Society assisted a pupil from the Glebe Public School to attend a school camp at Dubbo recently. We have received the following letter of thanks from the school.

Dear Glebe Society Members,

On behalf of myself, Year 6 students and Glebe Public

School, I would like to thank you for your generous donations that assisted us in making our Year 6 camp a reality.



The camp was highly educational and allowed us to enrich and consolidate the content we have been covering in the classroom as well as providing experiences and memories that will last a lifetime.

All of this would not have been possible without your kindness and generosity.

Many thanks,

**Bryce Walker**, Year 6 Teacher  
**Vicki Pogulis**, Principal

20 November 2007

## Thank you to The Glebe Society Members

I personally wish to thank the members who generously donated to Glebe Public School in order that all the pupils from Year 6 could attend the camp at Dubbo. For these children this has been once in a lifetime for them. I believe the value of such an activity makes a major contribution to both their social and educational development. Without your financial support many of these children would not have been able to attend.

Jan Wilson, Glebe Society Representative,  
**FLAG (Forest Lodge and Glebe)**

Some comments by students who attended the camp are published on the following page.



# Get your glad rags out for the Glebe Society's Christmas twilight party

The Glebe Society's annual Christmas party will be held at Lyndhurst on 14 December.

Details of the prizes and items up for auction, and the names of the generous donors, who are mostly businesses located in Glebe and Forest Lodge, are published on this page.

Raffle prizes include a gift voucher for \$500 from Broadway Shopping Centre, vouchers for dining at Glebe's top restaurants; a case of wine; books and local craft; and a pub dinner.

Raffle tickets cost \$5 each, or a sheet of five tickets for \$20. One sheet of five tickets is included with this *Bulletin* for you to purchase in advance if you like.

Include the payment for Raffle Tickets when you pay for the Christmas Twilight Party. Send in the stubs (the left hand side of the page) with your Christmas Party Booking form.

## Stories from the Glebe School Year 6 camp

Our favourite part of our camp was going to Stuart Town and staying at the farm. We loved staying at Fred and Flo's house. **Taleah and Mary**

I loved gold panning at the Bathurst goldfields. It was great! **Bryce, Courtney, Kahu and Sarah**

I enjoyed going to Dubbo West Public School. We played games and made new friends. They were really nice to us. **Barinya**

Our favourite part was on the bus. We all sang songs and had the music up really loud. It was fun. **Mimi and Amelia**

My favourite part was telling stories around the camp fire. **Linda and Nhi**

We loved seeing the monkeys at Dubbo zoo. We also liked going to old Dubbo goal. It was a bit scary. **Jacob, George and Josh**

I liked making the damper and mud bricks. **Jasmine**

It was funny when I fell in the fish pond. **Glen**

If you have already paid for the Party, send a cheque for tickets to The Glebe Society, PO Box 100, Glebe.

Phone Jeanette Knox (9660 7781) or Jan Wilson (9660 2698) for more tickets. If a message machine answers, please leave your name and phone number.

Buy more tickets at the Glebe Society Christmas Twilight Drinks at Lyndhurst, on 14 December! The Raffle will be drawn at the Christmas Party.

Results will be published in the *Sydney Morning Herald* Public Notices on Wednesday 19 December and *Bulletin* 1/2008.



## Raffle Prizes

### 1st Prize

- Gift Voucher for \$500 donated by the **Broadway Shopping Centre**

### Other Prizes

#### *Dining at Glebe's Top Restaurants*

- Voucher for \$250: **Boathouse at Blackwattle Bay**
- Three course dinner for two: **Glebe Point Diner**
- Voucher for \$150: **Restaurant Atelier**
- Degustation dinner for two: **a'Mews**

#### *Eats and Drinks*

- Mixed Christmas wine dozen: **Glebe Liquor**
- Dinner for two, value \$100: **Harold Park Hotel**

#### *Books and Crafts*

- Book *The Gardens of China* by Peter Valder donated by **Florilegium**
- Handcrafted ceramic pot: **Clayworkers Cooperative**



## Auction items

- Two tickets to New Year's Eve party at the Sydney Opera House: **The Lord Mayor of Sydney**
- Day's sailing in **James Craig** Windjammer series (April-Sept 2008): **Sydney Heritage Fleet**
- Flight over Sydney for one: **Heli-Tours**
- Two day midweek stay at Leura cottage (*A Touch of Zen*): **Anne Fraser**
- Night at Wentworth Park greyhounds with dinner for four: **Wentworth Park Sporting Complex Trust**
- Introductory Floral Design course (Japanese): **Yuga Floral Design and Café**
- Tour of Parliament House and lunch hosted by our local Member of Parliament: **Hon. Verity Firth MP**
- Blue Wren bottle of wine and glasses: **Alison and Ted McKewon**
- Other items donated by **Ruby Star Traders, Orient House and Michael's Flowers**.



## Lucky door prizes

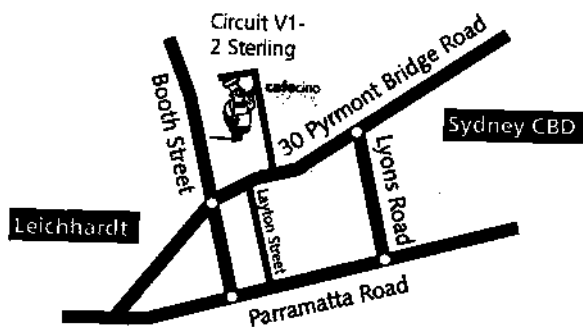
- Dinner for two, with bottle of wine **La Cucina Calabrese**
- Christmas leg of ham and turkey **Glenmore Meat Co**

# News and Notes

## Thirsty Thursdays

Members and friends are invited to meet for dinner in Glebe on the first Thursday of each month, to eat and talk with other people who live in Glebe.

For the last Thirsty Thursday of 2007, on 6 December, we will explore the City Quarter Village, on the site of the old Children's Hospital, and eat at *La Cucina Calabrese*, which is reached by a paved walkway in front of the swimming pool and gym. The restaurant is fully licensed or BYO (\$2 per person per bottle, so perhaps we don't share bottles).



We will start next year by sharing Lebanese dishes at *Almustafa*, 23 Glebe Point Road, on Thursday 3 January.

On 7 February we will go to *The Spicy Sichuan Restaurant*, at 1-9 Glebe Point Road.

## Interested in playing around French style?

Join other members playing pétanque (boules) on the foreshore of Blackwattle Bay (outside the 501 Glebe Point Road flats where the Blackwattle Canteen was many moons ago).

No previous experience or equipment required, only a bottle of wine and some nibbles.

We play every first and third Tuesday from 6 pm – next game 4 December. Phone or email Susie Cleary for more details (ph. 9660-4189, [susiecleary@ozemail.com.au](mailto:susiecleary@ozemail.com.au)).



Gary Hosie shows the Lord Mayor how it's done at the opening of the foreshore pétanque piste.

## Saturday Kids' Club at New Theatre

Glebe Society member Lyn Collingwood has been producing the Saturday Kids' Club at New Theatre throughout 2007.

Featuring the acoustic band Loosely Woven, magicians, storytellers, prizes and a reel-to-reel cartoon, the show appeals to children aged 4 -10 and their families. Birthday children are made a special fuss of.

The last Kids' Club, on Saturday 15 December, celebrates Sagittarians and will also be a special Christmas event.

All tickets \$12. Bookings 9519 3403. Start time 11am. New Theatre 542 King Street Newtown. Buses 370 and 422 pass the door.

## Bulletins by email

If you would like to receive your *Bulletin* by email instead of snail mail, please email [editor@glebesociety.org.au](mailto:editor@glebesociety.org.au)

## Our Local Member of Parliament

State Member for Balmain, Hon. Verity Firth MLA

Office address: 112a Glebe Point Road, Glebe 2037.

Senior Electorate Officer: Christina Harlamb, ph 9660 7586, fax 9660 6112, email

[christina.harlamb@parliament.nsw.gov.au](mailto:christina.harlamb@parliament.nsw.gov.au)

## City of Sydney Councillors

**Lord Mayor:** Clover Moore MP

**Councillors:**

Phillip Black  
Hon Verity Firth MP  
Chris Harris  
Marcelle Hoff  
Robyn Kemmis  
Michael Lee  
Shayne Mallard  
John McInerney  
Tony Pooley



**For enquiries:** Please contact the City of Sydney on 9265 9333.

## Forest Lodge Public School

*Home of The Glebe Society Archives*

Phone 9660 3530



# For your diary ...

**Sunday 2 December**, 11am – 1pm – public inspection of the Wireless House in Foley Park. All welcome.

**Tuesday 4 December**, 6pm – Pétanque, on the foreshore of Blackwattle Bay – see page 10. All welcome.

**Thursday 6 December**, 7pm - Thirsty Thursday - *La Cucina Calabrese*, the City Quarter Village (old Children's Hospital site).

**Wednesday 12 December**, 7.30pm - Glebe Society Management Committee Meeting - The Old Fire Station, 115 Mitchell Street.

**Friday 14 December**, 5.30 - 7.30pm - Glebe Society Christmas Party Drinks - *Lyndhurst*, Darghan Street.

**Tuesday 18 December**, 6pm – Pétanque, on the foreshore of Blackwattle Bay – see page 10. All welcome.

## 2008

**Thursday 3 January**, 7pm – Thirsty Thursday – *Almustafa*, 23 Glebe Point Road.

**Tuesday 15 January**, 6pm – Pétanque, on the foreshore of Blackwattle Bay – see page 10. All welcome.

**Thursday 7 February**, 7pm – Thirsty Thursday – *The Spicy Sichuan Restaurant*, 1-9 Glebe Point Road.

**Wednesday 13 February**, 7.30pm - Glebe Society Management Committee Meeting - The Old Fire Station, 115 Mitchell Street.

**Thursday 6 March**, 7pm – Thirsty Thursday – venue to be announced.

**Wednesday 12 March**, 7.30pm - Glebe Society Management Committee Meeting - The Old Fire Station, 115 Mitchell Street.

## Contacting

### The Glebe Society

#### Mail

All correspondence should be addressed to:

The Glebe Society Inc  
PO Box 100, Glebe NSW 2037

#### Website

The Society has a growing website ([www.glebesociety.org.au](http://www.glebesociety.org.au)) for the information of members and anyone with an interest in Glebe.

The website will only flourish if members use the site. Send contributions or comments to [webmaster@glebesociety.org.au](mailto:webmaster@glebesociety.org.au)

#### The Bulletin

We are glad to publish letters or articles on any matters of interest to Glebe, any topic raised in the *Bulletin*, or any issues relating to the Glebe Society. Write to the address above or email [editor@glebesociety.org.au](mailto:editor@glebesociety.org.au)

#### Disclaimer

Views expressed in this *Bulletin* are not necessarily those of the Glebe Society Inc.

#### Bulletin deadline

The next edition of the *Bulletin* will be published at the end of February. The deadline for contributions is **20 February 2008**.

## The Glebe Society Inc

Established 1969

#### Management Committee:

President	Jan Macindoe	9660 0208
Vice-president	Bruce Davis	9660 7873
Immediate Past President	Bob Armstrong	9660 4189
Secretary	Liz Simpson-Booker	9518 6186
Treasurer	Bruce Davis	9660 7873

**Committee Members:** Dorothy Davis 9660 7873 Simon Fraser 9660 7560  
Jan Wilson 9660 2698

#### Sub-committee Convenors:

All sub-committee convenors are *ex officio* members of the Management Committee

Arts, Culture and Media	Sue Ingram	9692 8534
Bays and Foreshores	Tony Larkum	9660 7030
Wentworth Park	Anne Fraser	9660 7560
Blue Wrens	David Mander Jones	9552 4172
Environment and Open Spaces	Andrew Craig	9566 1746
Glebe against Global Warming	Bill McCarthy	9660 5119
Heritage	Dianne Gray	0417 434 814
Infrastructure Defect Reporting	Margaret Sheppard	9660 4121
Membership	Cheryl & Bryan Herden	9660 7371
Planning	Neil Macindoe	9660 0208
Transport and Traffic	Chris Hallam	9660 3670

#### Adopt-a-Park Contacts:

**Foley Park:** Bobbie Burke (9692 0343) **Kirsova:** Fay & David Mander Jones  
**Paddy Gray Park:** John Gray

#### Other Contacts:

Archivist	Lyn Milton	9660 7930
Blackwattle Cove Coalition (BCC)	Anne Fraser	9660 7560
Bulletin Editor	Edwina Doe	9660 7066
Event Coordination	Dorothy Davis	9660 7873
History of Glebe	Max Solling	9660 1160
History of the Glebe Society	Jeanette Knox	9660 7781
Liaison with CityRags	Bob Armstrong	9660 4189
Liaison with CoGG	Bruce Davis	9660 7873
Liaison with FLAG	Jan Wilson	9660 2698
Publicity	Sue Ingram	9692 8534
Website	Cynthia Jones	9660 2451

# In this issue

- Federal Election - pages 1 and 7
- Our Christmas Party – pages 1 and 9
- Traffic – pages 2 -3
- Planning matters – page 5
- Review of Max Solling's book – page 6
- Glebe News – pages 8 - 9

The GLEBE SOCIETY Inc  
PO Box 100 Glebe 2037



POSTAGE  
PAID

## Membership of the Glebe Society

<b>Individual</b> member	<b>\$45</b>
<b>Joint</b> (2 people, one address)	<b>\$55</b>
<b>Household</b> (more than 2 adults and/or children, one address)	<b>\$60</b>
<b>Concession</b> (student or pensioner)	<b>\$20</b>
<b>Institution or corporate</b>	<b>\$110</b>

Download a Membership Form from our website ([www.glebesociety.org.au/AboutTGSI/Membership/Membership\\_application.pdf](http://www.glebesociety.org.au/AboutTGSI/Membership/Membership_application.pdf)).

Or write to PO Box 100, Glebe, 2037 or phone the Secretary, Liz Simpson-Booker, on 9518 6186.

If you have a matter that you would like to discuss with the Management Committee, please phone the Secretary.

## Community Contacts

**Manager-Neighbourhood Services Centre:** Glebe, Forest Lodge, Camperdown, Ultimo & Pyrmont: Nick Hespe.

**Email:** [nhespe@cityofsydney.nsw.gov.au](mailto:nhespe@cityofsydney.nsw.gov.au)

**Glebe Town Hall Office:** 9298 3190 8.30am-5.30pm Mon- Fri

**Sydney City Council Customer Service**

**Telephone (24 hours):** 9265 9333

**email:** [council@cityofsydney.nsw.gov.au](mailto:council@cityofsydney.nsw.gov.au)

**website:** [www.cityofsydney.nsw.gov.au](http://www.cityofsydney.nsw.gov.au)

**Glebe Point Road upgrade contact (24 hrs):** Grant Donohue 0414 687 101, [grant\\_donohue@gmwurban.com.au](mailto:grant_donohue@gmwurban.com.au)

**Dumped Shopping trolleys:** Trolley Tracker 1800 641 497

**Waterway Garbage:** NSW Maritime response - 9563 8592