



# Glebe Society Bulletin

6/2006 July/August

## Glebe Point Road Revitalisation

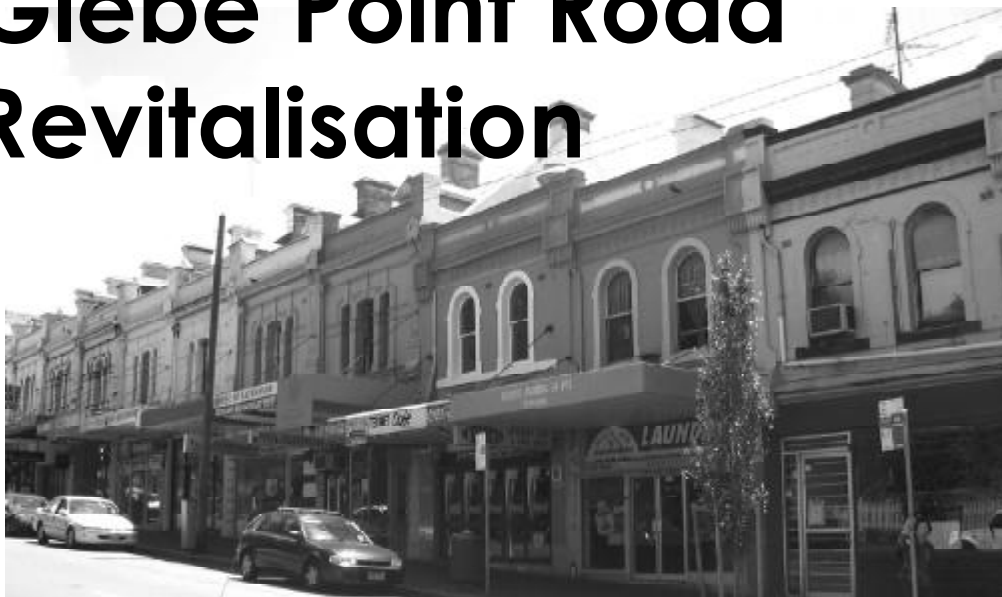


Photo courtesy of the City of Sydney Council

The City of Sydney Council has allocated \$12 million for the physical works which will be the first stage in the revitalisation project. This will dovetail with the Foley Park upgrade and the City's broader social programs and marketing initiatives to build on the unique character of Glebe.

A very well attended public meeting was held in the Glebe Town Hall on Wednesday 28 June. The meeting was opened by Lord Mayor Clover Moore and the details of the City's proposal were outlined by Maren Perry.

The project aims to implement urban design improvements to provide a more vibrant, active and safe public domain that will reinforce Glebe Point Road as the 'main street' for Glebe.

Planned improvements include:

- traffic calming
- pedestrian safety
- cycle access
- new footpaths
- safety and security upgrades
- undergrounding of overhead cables
- public art

Since this meeting, the Glebe Society Management Committee and the Coalition of Glebe Groups (CoGG) have held a series of meetings to formulate a response to the proposals. See pages 2-4 for a summary of the CoGG response and other Glebe Point Road articles.

The Glebe Society invites members, friends and relatives to a pre-release screening of Al Gore's amazing film about Climate Change,

### AN INCONVENIENT TRUTH

at 6.30pm on Tuesday, 5 September at the Palace Cinema, Norton Street. See the enclosed booking form.

*YOU HAVE BEEN  
WARMED!*

#### 2006 AGM

The 37th Annual General Meeting of The Glebe Society Incorporated will be held at 11am on Sunday, 27 August, 2006 at *Benledi*, 186 Glebe Point Road, Glebe (next door to Glebe Library). See page 5 for full details.

# Glebe Point Road Revitalisation

## CoGG proposes a different way ahead for Glebe Point Road upgrade

The Coalition of Glebe Groups\*, in which the Glebe Society is major player, has proposed an adventurous alternative to the City Council's upgrade scheme for Glebe Point Road.

The City Council has budgeted \$12m for the upgrade. Major features include the undergrounding of power cables from Broadway to Wigram Road, "smart poles" that combine improved street lighting and several different services in one pole, widening of footpaths and new paving about as far as Hereford Street, improvements to street engineering and redesign of intersections designed to calm traffic flow. They have also budgeted for new street furniture, landscaping with new plantings, introduction of public art, and many other smaller improvements.

While CoGG generally supports the works proposed by the Council planning team, it commented:

"However, there is a vitally important and fundamental issue that CoGG believes the concept design does not adequately address. This issue is the overwhelming need to make Glebe Point Road a much more pedestrian-friendly environment and markedly reduce the impact of motor vehicles on the commercial areas...

"CoGG believes that the City's proposed upgrade is a once in a generation opportunity to transform [parts of Glebe Point Road] from traffic-dominated commercial strips into true pedestrian-friendly villages...

"CoGG ... compliments the concept design to the extent that it will make GPR look much better. However CoGG submits that looking better is not enough – the fundamental task must be to make Glebe Point Road work much better as a people-friendly, village environment."

CoGG proposes that parts of Glebe Point

Road (and later Forest Lodge) should be converted to "shared zones" where traffic and pedestrians use the same pavement at the same time. Shared zones already exist in Australian cities although most are located in lightly trafficked residential streets. However European cities have successfully implemented shared zones in business districts.

The three nodes identified in Glebe Point Road are:

- southern corner of Derwent Lane to the southern corner of Francis Street (at Glebe Primary School);
- northern side of St Johns Road to the southern side of Bridge Road (at Foley Park); and
- from the steps leading to "Benledi" to the northern side of Ferry Road.

CoGG proposes that the first shared zone be at the primary school node and that the traffic lights proposed for this site not proceed. CoGG recognises that special measures might be required to ensure that schoolchildren can cross Glebe Point Road safely. "We anticipate that a technical solution, other than traffic lights,

should be available to solve this," the submission says.

CoGG proposes that time be allowed to digest the experience of the first zone before the later shared zones are established.

The submission suggests there is an opportunity to integrate the upgrading of Minogue Reserve with the design of the primary school shared zone, and that access to Glebe Point Road from Francis Street be reviewed.

CoGG also suggests other possible ways of making Glebe Point Road more pedestrian friendly:

- Limit vehicular access to Glebe Point Road from Broadway to St John's Road to buses, approved residents, delivery and trade vehicles, and bicycles, with other traffic entering Glebe from Parramatta Road via Derwent Street and exiting via Ross Street. This would be associated with extensive footpath widening, reduced speed limits, revised parking arrangements in surrounding streets and other improvements in Glebe Point Road.



Main shopping street in Parma, northern Italy. Pedestrians mingle with slow moving buses and bicycles. Photo: Andrew Craig

\* COGG is a permanent committee consisting of two representatives from each of the Glebe Chamber of Commerce, the Glebe Society, the Glebe Point Residents' Group and the Glebe Residents Action Group. The current chair is Bruce Davis.

# Glebe Point Road Revitalisation



Cambridge Town Centre. Pedestrians share the road with cars, buses and bicycles.  
Photo: Andrew Craig

- Should a light rail line be installed on Broadway/Parramatta Road, a variation on this idea could be explored. This would involve making Glebe Point Road a shared zone from Broadway to Bridge Road and establishment of a continuously operating, two-direction light rail branch line along the full length of Glebe Point Road. Vehicle access to Glebe Point Road would be limited, and the street would be reconstructed on one level eliminating footpaths and gutters.

Other points included in CoGG's response include:

- The development of a long-term parking strategy for Glebe that takes into account the extra traffic likely to result from the revitalisation of business in Glebe Point Road despite measures to encourage the use of public transport. This should be done in parallel with design of the Glebe Point Road upgrade.
- Undergrounding of overhead cables be extended to Toxteth Road, and to Glebe Point in the medium term.
- Improved provisions for bicycles.
- Establishing a demonstration area where the public can view proposed

finishes and examples of street furniture.

- That the detailed design be the subject of later consultation and review once the concept design is accepted.
- Council should establish a comprehensive education program to inform affected people about upgrade works and council should appoint designated liaison officers.

## The thinking behind "pedestrian friendly Glebe"

The following extract from the CoGG response to the City of Sydney Council proposals explains the thinking behind the decision to advocate a more "pedestrian friendly" Glebe Point Road.

"In 2003 a Glebe community workshop proposed the following 'essence of Glebe':

"Glebe is a unique historic village known for its celebration of the arts. A diverse population mix of academics, artists, professionals, local business people and public housing tenants defines this uniqueness. Glebe is known widely for

the exciting and enriching experiences people enjoy when they visit. Local residents, business people and visitors love to live, socialise and involve themselves in the Glebe community.

"Community workshops and consultations suggest that most community members want the future of Glebe to unfold as a further accentuation, concentration and extension of this essence. This future particularly includes commercial and retail areas with vitality, to attract more visitors and cause both residents and visitors to linger. However, the desired increased vitality should not be at the expense of Glebe's character, culture, heritage value and position as a unique village in the City of Sydney.

"This response submits that the main aim of the proposed improvements in Glebe Point Rd should be to attract more people to Glebe Point Road and encourage them to linger over slow food, relax, meet their friends and absorb the artistic and sensory experiences in their own time.

"On this basis, the key activities the new infrastructure should encourage are:

- Walking up, down and across the road with as much freedom and safety as practicable
- Standing and talking to friends, acquaintances and others as people meet casually
- Sitting, talking and reading in coffee shops, restaurants and the street with opportunity to observe others and soak up the artistic life around them

"Essential to this desire is slowness. We want Glebe to be an oasis of relaxation, friendliness and community interaction that attracts both visitors and locals because of this ambience. The greatest threat to this ambience is the volume and speed of vehicular traffic in Glebe Point Road and the presence of parked cars in places that currently conflict with pedestrians' interests.

"While there are many criteria to be considered, this response contends that the above criteria are by far the most important to be considered in a critique of the design concepts for the upgrading of Glebe Point Road".

# Glebe Point Road Revitalisation

## Some detailed suggestions for Glebe Point Road

The CoGG submission contains several suggestions for consideration by the City Council planners. It is expected that many issues such as these will be covered in later community consultations.

### Operation of Glebe Point Road (GPR)

- Improve the clarity of bus route and timetable information so that visitors can understand and access public transport more easily.
- Outdoor seating – approval made easy with a less expensive rate.
- Interpretive signage – City to help establish a self-guided heritage walk
- Directional signage – to GPR from foreshore, to Ross Street and St Johns Road from Sydney University
- Features for children and family friendliness in GPR
- Review provision and location of public toilets
- Review ashtrays and garbage bins
- Detailed design to consider extension of shop awnings for wet weather
- Banners along GPR and flagpoles
- Outdoor games, eg chess, hopscotch, etc
- Designated busking places
- Areas for outdoor music

### Public Art

Detailed design to incorporate and integrate with plans for public art

### Lighting

Safety – Increase lighting at hot spots and closed circuit TV (CCTV)

*There is an article about the Jubilee Fountain by Kate Sullivan on page 7 of The Glebe, Thursday 20 July.*

*John Williams, a Glebe resident, wants the fountain to be repaired and turned on. He would like to kick-start a fund for its rejuvenation.*

## Take a look at the Jubilee Fountain



The Jubilee Fountain.  
Photo: Rod Holtham

The Jubilee Fountain, at the corner of Glebe Point Road and Parramatta Road, is one of a few commemorative fountains located at roadway intersections in Sydney. The cultural significance of the Fountain site is as a place of commemoration of Municipal Government at The Glebe, which, in 1859, was one of the first local government areas established in NSW.

The site contains a city boundary stone which is of historic significance, and is one of the few remaining such markers which were originally placed to mark the limits of the Town of Sydney in the 1830s. Also on the site is the Dave Sands Memorial, an item of social significance recording an expression of care and interest by the Glebe community concerning the people, events and identity of the place.

In 1989 a committee of the Glebe Society, known as “The Glebe Point Road Project”, retained noted Glebe architectural historian Craig Burton as consultant in the work of conserving and promoting the Jubilee Fountain. We were assisted in this by the National Estates Grants Program (1990/1991) on recommendation of the Heritage Council of NSW. In 1992 Mr. Burton’s final

report and recommendations were received.

Leichhardt Council, with support from the Department of Planning, undertook some of the recommended work which was unveiled in 1997 by the then Governor of NSW, The Hon Gordon Samuels.

However, the result is much less than the concept put forward by Mr. Burton, and the overall idea is considerably marred by the café on the corner covering much of the space which was intended for public use with a plastic marquee. We bring the particular matter of the Jubilee Fountain (and the work already done by Craig Burton) to the City Council’s attention. This is timely especially as local action plans are well under way for the revitalisation of Glebe Point Road, and the Fountain – which was erected in 1909 to celebrate the Jubilee of the Municipality of The Glebe – will mark its sesquicentenary in 2009.

Glen Wallace (City of Sydney Project Officer), Maren Parry (Glebe Point Road Design Manager), and Eva Rodriguez Riestra (Public Art) met with us to discuss the Fountain and its significance at the “gateway” to Glebe, and were glad to receive a copy of Mr Burton’s detailed report, recommendations and drawings. An undertaking was given to look into the matter of the use of public space by whichever café proprietor currently holds the lease of the café/restaurant. We think that the space surrounding the Fountain should be returned to the public if, and when, the lease allows.

**- Bobbie Burke and Ian Jones**



The café on the corner detracts from the fountain.  
Photo: Rod Holtham

# Climate Change and the Glebe Society

Six founder members of the Glebe Society's Climate Change Sub-committee held their first meeting on Thursday 6 July. A broad ranging discussion on global warming and what the Glebe Society might be able to do about it was undertaken. It was unanimously agreed that the Society should take an active interest in the problem and encourage all its members to become involved both individually and as a community in minimizing its effects.

Two major areas of activity were proposed:

1. **Educational activities** to inform and energize individuals and the community to undertake specific energy reduction activity. Such activity involves minimizing unnecessary electricity usage and lowering motor vehicle emission by walking, bicycle riding and use of public transport where possible. A specific list of activities will be developed and promulgated through the *Bulletin* in the coming

months. Where possible, these activities should be undertaken with collaboration of other environmental groups, particularly the nearby Balmain Rozelle group.

At a more general level, discussion took place on the encouragement of regulating authorities, such as the state government and the City Council, to implement specific building restrictions demanding energy-efficient buildings and water storage. Subsidies for energy-efficient appliances and water tanks should be encouraged.

The first educational activity is a pre-release screening of the Al Gore Film "*An Inconvenient Truth*". This will be held on Tuesday 5 September at the Palace Cinema, Norton Street, Leichhardt. See the enclosed flyer for further details.

2. **Specific political activity** to generate a major effort to control greenhouse gas release from coal-fired plants and motor

vehicles. Specifically, the Glebe Society would question State and Federal election candidates regarding their commitment to solving the global warming problem. It was noted that the local State member, Sandra Nori, would not be standing for state parliament so it was important for the Glebe Society to meet with all potential candidates to determine their commitment to this issue. It was agreed that discussion of nuclear power would be deferred at the present time. Other issues discussed were an environmental fair, biofuels and possible web sites which could be of use in developing policies.

All Glebe Society members are welcome to join the sub-committee. Please contact Bill McCarthy at [billmcca@bigpond.net.au](mailto:billmcca@bigpond.net.au) for more information. A timetable for regular meetings will be developed at our next meeting.

- Bill McCarthy

## The Glebe Society Incorporated 37th Annual General Meeting

### Notice of meeting

Notice is given that the Annual General Meeting of The Glebe Society Incorporated will be held at 11am on Sunday, 27 August, 2006 at *Benledi*, (next door to Glebe Library) at 186 Glebe Point Road, Glebe. Office bearers of the Society and other members of the Management Committee will be elected at the AGM. Nomination forms are available from the Glebe Society Website ([www.glebesociety.org.au](http://www.glebesociety.org.au)) or by writing to PO Box 100, Glebe 2037. Members are encouraged to consider the benefits of active participation in the Society. Nominations close on Friday 18 August 2006.



### Invitation

All members of the Society are invited to the AGM. Only **financial members** are entitled to vote.

### Agenda

1. Present
2. Apologies
3. Confirmation of the minutes of the 36th AGM held on 28 August 2005.
4. President's report
5. Subcommittee reports. Reports will be published in the Society's Bulletin. However Chairmen and Convenors will be present to provide updates and/or answer questions.
6. Treasurer's report. Motion: That the Balance Sheet as at 30 June 2006, the TGSi Income and Expenditure Statement for the year ended 30 June 2006 be received.
7. Election of Office Bearers
8. Close of meeting.

...oooOOOooo...

### Guest Speaker

We are delighted that **Professor Ann Brewer** has accepted our invitation to speak to members, following the conclusion of the formal meeting agenda. The title of her talk is "The University of Sydney's Place in the 21st Century"

Professor Brewer is the Deputy Vice-Chancellor (Infrastructure) at the University of Sydney and is responsible for Capability (staffing), Information & Communications Technology as well as Campus Property and Services – in other words, "People, Processes and Place". She is therefore responsible for the Max Factor building, and perhaps other Glebe buildings, becoming a part of the University of Sydney campus.

**Refreshments will be served at the conclusion of Professor Brewer's talk.**



## Draft Urban Design Study

The Society's response to the Study ran to six pages, so here is a brief summary of the major points:

1. The quality of the research is very high. The issue is how it should be used.
2. There were a number of errors and omissions, and also some odd proposals. These should be corrected or removed.
3. There should be a list of detracting buildings and a scale for dealing with them
4. The revival of corner shops is unlikely.
5. There needs to be a glossary, in which terms such as "commercial" are defined.
6. Business uses are supported where they will not impact adversely on residents.
7. Controls for height and density are supported, but should be applied so lower figures are the norm.
8. Controls that reflect the actual situation in Glebe are supported.
9. The general goal of maintaining the existing character of Glebe is supported.
10. Heritage controls should be spelt out for inclusion in the LEP.
11. Additional controls could be considered for the LEP.
12. Posted awnings and balconies need controls.
13. "Significant site" controls should be improved.
14. There is a strong argument to retain a single Glebe Conservation Area.

## Rooftop Motel, 146-8 Glebe Point Road

As mentioned in previous *Bulletins* all Glebe motels are under pressure because of cut-price offers by City hotels. All of them have tried to convert to self-contained dwellings, but none have actually done so.

Another possibility is to go downmarket, and the Rooftop has applied to become a 156-bed backpackers' hostel. However, this is of course a non-conforming use (as is its present use) and recent legislative changes (April *Bulletin*, page 4) mean it is

no longer possible to change from one non-conforming use to another without approval.

The committee debated the proposal on 12 July and has asked Council to reject the application, but suggests a much lower density, with a commercial component on the ground floor, and possibly on the first floor as well, would be of greater benefit to Glebe Point Road (provided the trees are retained and the façade remodelled).

## Open Space Update

In the 1970s the Society drew up a scheme to secure continuous public access to the entire Glebe foreshore and the water-courses that connected the waterfront to the interior. This plan looked like a vast inverted irregular "U" with one arm stretching along Johnstons Creek and then the Orphan School Creek, the base formed by the Glebe peninsula, and the other arm Wentworth Park (originally a swamp fed by Wattle Creek).

It is hard to believe in 2006 that until 1979 the only public access to the waterfront was a small reserve at the end of Glebe Point Road. Max Solling's presentation at St Scholastica's on 5 April showed us how totally industrial that foreshore had become.

One great advantage of the plan was to enable the Society to campaign for access to whichever site became available, like fitting together the pieces of a jigsaw puzzle. Even if a site was isolated it would always be possible to link it to another site eventually, or to an existing small park or easement. This is the strategy The Society pursued for thirty years, and its spectacular success is now plain for all to see.

## Early Successes

In 1979 the Society had its first great success with the creation of Blackwattle Bay Park, still the only park whose commemorative plaque acknowledges The Society's role. That success spurred John Buckingham to try for the big one. My role was to ensure the proposed Bicentennial Park remained at the top of the list of the Leichhardt Bicentennial Committee (April *Bulletin*, 1984) and I spent four years on that committee so that

when John launched his final campaign, the money and the commitment were there.

## Current Works

More recently we have seen the City Council zealously continuing the plan with the acquisition of the Anchorage site, and now the reconstruction and linking of the entire waterfront so poorly supervised and engineered by Leichhardt, the impending restoration of Bellevue and, by next year, access along the high school foreshore to the head of the Bay.

## Orphan School Creek Corridor

Meanwhile, in this *Bulletin*, another part of the original scheme, Orphan School Creek, joins the long list of achievements. Congratulations to Roberta Johnston and her team, who formed FRROGS to turn the corridor into regenerated bushland (September *Bulletin* 1996, when FRROGS was a Society sub-committee). The Society is indebted to FRROGS for pursuing what they could not have imagined would be such a lengthy and complex campaign.

Its length was less of a surprise to me since it originated in my Presidency (September *Bulletin* 1984, but mooted the previous year) and I have been pursuing the matter, and supporting FROGS, ever since. The late 80s were particularly difficult, and I can recall the then Leichhardt Town Clerk, Tony Woodward, apologising to me on my election to Council for his shameful neglect, which had prolonged our efforts by at least five years.

## State Rail Authority Land, Federal Park

The City Council has also voted to acquire the land adjacent to the Light Rail viaduct in Federal Park, Annandale. This land was also identified by the Society and the long-defunct Annandale Association at the same time as Orphan School Creek, but Leichhardt failed to follow it up. It will give much better access to the foreshore, especially for residents of North Annandale.

- Neil Macindoe

# A vision for the future of Blackwattle Cove

The Blackwattle Cove Coalition (BCC)\* is putting the finishing touches to a vision and “wish list” for the Blackwattle Cove area.

These documents will form the basis of BCC’s negotiations with State and local government authorities responsible for the area. Meetings in August are scheduled with the “stakeholders group” (a number of State authorities and the City Council), and NSW Maritime’s strategic planning group.

BCC’s vision statement is unusual in that it does not follow the pattern used by the average management consultant. Entitled *Blackwattle Cove 201X - Constructive Dreaming*, it is a series of scenarios involving three families who visit Blackwattle Cove on a sunny Sunday afternoon 10 to 15 years in the future. It describes the routes they take from their homes, and what they see and do along their way. The preamble says: “This is a tale about a future which, with commitment and hard work, may become a reality.”

The second document which is being finalised is an eight-page list of the actions that will be needed to make the vision come true. The preamble reads: “A century ago Blackwattle Bay was a busy maritime precinct and Wentworth Park was a Sydney showpiece. Over the years the demographics of the area changed and the appearance of the area changed with the changing population. Eventually Pyrmont, Ultimo and Glebe became slums and after greyhound racing was introduced in the 1930s Wentworth Park lost its character as a people’s park. The area was neglected and became a wasteland.

“In 2005 residents groups in Pyrmont, Ultimo and Glebe joined together to form an organisation, the *Blackwattle Cove Coalition* (BCC), which set about reversing this decline. The members of these groups recognised that the Blackwattle Cove precinct had the potential to be a great asset, both locally and to Greater Sydney, if only State and local government authorities could be encouraged to work together to restore the area. They recognised that the incorporation of the whole precinct into the City of Sydney

presented a platform for cohesive redevelopment that had not existed for many years...

“This document puts flesh on the ethereal dream [of the vision statement]. It lists in detail a wide range of actions that we believe need to be taken quickly and, longer term, more ambitious projects that we recognise may not be achieved for some years.”

Major projects on the list include:

- Blackwattle Bay wharves (adequate public access and alignment of buildings to maximise views from Wentworth Park).
- Bank Street, Pyrmont (foreshore walk completed from Fish Market to Anzac Bridge; public purchase of 1 Bank Street and establishing a park and sporting facilities near the approach to the old Glebe Island Bridge).
- Fish Market (development and implementation of a viable upgrade plan).
- Wentworth Park (an extensive range of activities, including adoption by Council of a master plan for the park using the 1990 plan as a basis, vastly improved

public access to the section currently occupied by the greyhound racing track, general improvements to the northern and southern areas administered by the City Council and eventual reintegration of the three sections of the park including demolition of the grandstand and relocation of greyhound racing).

- Pedestrian use (easier and safer access to Wentworth Park from all quarters, including overhead walkways).
- Bridge Road (complete or partial lowering of the road to allow direct access from the park to the waterfront).
- Bridge Road concrete batch plant site (possible home for the Sydney Heritage Fleet when the batch plant relocates).

- Bruce Davis

*\*The BCC is a coalition of resident and business groups in the Glebe, Pyrmont and Ultimo areas that is committed to reviving the fortunes of the area surrounding Wentworth Park and the foreshores of Blackwattle Bay. The current convenor is Anne Fraser.*



Wentworth Park as it is today. Photo: Bruce Davis

## Glebe Conservation Area Study

In our review of this draft report the Heritage Sub-committee found many anomalies and extremely poor editing. We were also disappointed that listed buildings in Glebe Point Road only were addressed. There was no mention of the other listed buildings that exist throughout Glebe, and no acknowledgement of the likely existence of many other significant buildings worthy of listing. However we have been advised (by John Poulton, Heritage Architect, City Council), that the priority was to identify conservation areas

and streets of significance, which it did, so as to inform the Urban Design/Planning Control Study currently underway. John also advised that studies to establish further listings will be carried out over future years.

The committee early last year produced a photographic study of much of Glebe’s building stock worthy of consideration for listing, and presented it to Council. It looks like we will have to try harder.

- David Mander Jones



## Update on Crown Land in Forest Lodge

The campaign to save the 675m<sup>2</sup> of tree covered land at the rear of 77 Hereford Street (now known as 9 Alfred Road) has reached a confusing state. This is due to responses we have recently received from the Lord Mayor of Sydney and the Department of Lands which seem to be contradictory.

The Department of Lands wrote, on behalf of the Minister for Lands, with the welcome news that it had withdrawn the land from current sale while it further investigates options for ongoing protection of the tree covered landscape that dominates this site. The Department advised that it has also had further discussions with the City of Sydney Council to explore opportunities that may enable Council to gain management of the site and it understood that Council is currently considering these matters. The Department advised that, in the interim, the management of the land would remain with the Owners' Corporation under its current licence arrangement.

The Lord Mayor wrote that the acting CEO of the City of Sydney Council had met with the Department of Lands, but that the Department did not accept Council's proposal, the exact nature of which the letter does not specify. The letter also states that the Department is negotiating a new licence arrangement with the Owners of 77 Hereford Street. This seems to be a misunderstanding because the continuation of the current licence arrangement between the Department of Lands and the Owners' Corporation is an interim arrangement only, not a long term solution, and this is confirmed in the Department's letter. The Owners' Corporation supports a long term solution for preservation of the land for public open space.

The forestlodgetrees community group is currently working to clarify the situation and is encouraging both parties to get together in order to reach a solution to save the land as public open space in perpetuity.

See our blog at <http://forestlodgetrees.blogspot.com> for more information as it comes to hand. We can be contacted at [forestlodgetrees@yahoo.com.au](mailto:forestlodgetrees@yahoo.com.au).

- Mary Pollard

## A Win for the Blue Wrens?

The City of Sydney Council recently announced they have reached an agreement with the Fundraising Trust of Westmead Children's Hospital to purchase the Wood Street land at Forest Lodge. The 5000 m<sup>2</sup> parcel of land sits adjacent to and above the gully line at Forest Lodge and also abuts Hereford Street. The land will provide additional public open space for the local community, reinstating the children's playground while increasing habitat areas with buffer zones adjacent to the Gully.

The Gully part of the green web corridor leading to Rozelle Bay has been neglected for a long time. In 1925 the creek was diverted into Sydney Water pipes about 6 metres underground and the banks of the Gully were formed with demolition fill from the hospital site, including ash from the hospital chimney. Soon after, children played cricket within its grassy banks, while in the depression a herd of nanny goats grazed in the fenced-off Gully, providing milk for sick babies and infants at the Children's Hospital. In the late 1970s a local resident planted the coral trees, a remnant of an old domestic orchard still survived in one corner of the Gully, and great copses of lantana covered the sunny embankments. From 1994 working bees were organized to clean up weeds and rubbish in the Gully and to declare our interest in the Gully which had become a dense leafy tangle with a tall upper canopy and shrubby middle canopy of exotic weed species. Occasional dumped stolen cars were another feature of the Gully until bollards were erected in the mid 1990s.

The Gully was a haven for little birds like the Superb Blue Wrens and tiny darting Silver Eyes, who flitted around the area. The first local working bee I organized provided a great lesson in the need to get expert advice before cleaning up an area, even if it is entirely made up of exotic weed species. At sunset, proudly surveying our handiwork after the end of a long day of clearing weeds and hacking away at the lantana on Hereford Street, I was horrified to see a small family of Blue Wrens fly in to nest in what was left of the

lantana. Luckily we had not had time to haul it away for rubbish removal. FRROGS formalized itself as a group in 1996 and conducted bird surveys which firmly established the Gully's importance as habitat for small and other native birds, both local and migratory. The National Trust wrote a revegetation strategy based on that bird survey, and we subsequently inspired the developer of the hospital site to adopt our philosophy and work with us to turn the Gully into a biodiverse habitat for small and other native birds and fauna. With the Council boundary change the project has had significant support from City of Sydney Council, which shares our vision for the Gully primarily through Councilor Robyn Kemmis. Our local State Member, Sandra Nori, delegated to us



Linda Volsic, whose ongoing support has also been crucial in securing the Wood Street lands as open space.

We look forward to 2008, the estimated completion date for the revegetated Gully and the Wood Street lands. In the meantime we have work to do. We have grave concerns for the very fragile population of Blue Wrens left in Glebe. Once these small birds are gone from an area they are lost for ever. Blue wrens and other small birds in the urban environment now often rely on rail corridors, cliff faces industrial sites and other neglected areas that provide dense habitat for nesting and safe passage to forage and move safely through. Lack of suitable habitat puts them at risk from predators such as currawongs and other carnivorous birds. Do you have some in or near your garden? Do you see your garden as a potential habitat? Would you like to help protect the Blue Wrens of this area? Choose dense prickly native shrubs for a corner of your garden and you may just hold the key to their survival.

- Roberta Johnston, FRROGS





## Historic photos of Toxteth House come home

Early in July the Society received an email from Mr Peter Ford of Plymouth, England. It read:

"The following photographs have come to light in an old album which was compiled by a Lt. Frederick RN of HMS DART which was based in Sydney during 1892 - yes 1892 - and who spent some time with the Allen family at Toxteth Park House. If they are of any interest or use to your society or other local archive I would be happy to send them to you.

"Toxteth Park House

- View of Bamboo Arch Driveway
- View of House from Garden
- View of House from adjacent 'Strathmore'
- Side View of House through tree
- Family Group on verandah (place mat)
- Family Group on verandah (place mat)
- Allen family daughters with friends (2 views)
- Nine internal/external misc views

"Photographs generally good condition although on quite thin paper and of various sizes and inscribed with comment/ names on back ..."

Needless to say, the Society promptly responded that it would very much like to have the photographs and they have since arrived. Given the recent demise of the fig tree in front of Toxteth House it is interesting that some of the photographs show aspects of the garden only a few years after the fig was planted.

Because we do not have appropriate facilities to store such old pictures, we have spoken to the State Library which holds a collection of Allen family photographs and the City of Sydney which also received photographs from Mr Ford. Our photos will be placed in one of these collections on the condition that the Society can reproduce them as it wishes.

Three of the photos, together with the captions referred to by Mr Ford, are reproduced on this page.

- Bruce Davis



**Above:** A distant front view of Toxteth, taken from the roof of a house called Strathmore where the Allens moved to live some years ago before Toxteth was built.

**Below right:** Side view of Toxteth when the oaks were bare of leaves. It was under these lovely oaks that we spent Christmas afternoon diving into the pecan [?] pie etc.

**Below:** Part of the verandah in front of drawing room at Toxteth with family group. (The various people are identified on the back of the photo.)



## Prize winners at Glebe Art Show

A large throng of people attended the opening of the 2006 Glebe Art Show in the Glebe Branch Library on Friday evening, 30 June. Almost 180 items, in oils, water colour and other mediums were displayed on the walls of the Benledi Room, in the corridor, in the Library itself, and in the upstairs rooms of the building. The display remained open until Sunday, 9 July.

Sydney Lord Mayor Clover Moore opened the exhibition and presented the following prizes:

First prize (\$3000), donated by the City of Sydney Council, to **Paul Procee** for "Head of Boy 2006" (oil on copper).

Works on paper prize (\$1000), donated by the Ancient Briton Hotel, to **Mark Ward** for "No Ticket No Laundry - Beijing Art Academy".

Photographic prize (\$1000), donated by the Art Show Committee, to **Julia Hush** for "Water Colours".

People's Choice (\$250), donated by the Haven Inn, to **Donna Keuk** for "Bird's Eye View".

Both Mark and Paul have exhibited in the Art Show for nine years. Paul has had works in various Archibald competitions. Paul and Julia are both Glebe "locals".

In addition, Dr Libby Hindmarsh, on behalf of the Hindmarsh Family, presented the prize for a Glebe Resident between the ages of 18 and 30 years to **Grace Hari** for "Decadent Still Life".

Congratulations to organisers Robin Lawrence and Chris Newton, and their helpers on a most successful event.

- Jeanette Knox

# News and Notes

## Thirsty Thursdays

All members are invited to meet for dinner in Glebe on the first Thursday of each month, to eat and talk with other people who live in Glebe.

The next Thirsty Thursday is at *La Tavolaccia* Garden Restaurant, 355 Glebe Point Road (near the Toxteth Hotel) on 3 August at 7pm. There is no need to book, so just turn up and BYO wine. Put Thursday 7 September in your diary too.

## Welcome to New Members

Prue and Michael Williams, the new owners of the *Valhalla*, were accepted as a member at the July Management Committee meeting. We look forward to seeing them at future Glebe Society functions.

## Are you entitled to vote at the AGM?

Was there a membership renewal form in your *Bulletin* 5/2006? Have you returned it yet? If not, you won't be able to vote at the AGM. See the notice on page 5.

## Survey of Glebe Society Members' Interests

We thank the many members who have sent in their completed questionnaires. Have you returned your questionnaire yet? There is still time.

## PHOENIX RISING ... from the ashes

The Glebe Walter Burley Griffin Incinerator Revisited - Sunday 24 September from 11.30am, in the park on the bay between Ferry Road and Forsyth Street

Come and bring a picnic lunch! See the enclosed flyer for further details.

## Glebe Gardens - 1820-2010

July and August are quiet times in gardens, time to think of the bigger picture whilst pruning and sweeping the leaves.

Ornamental or environmental? Can both these objectives be achieved in our small inner city gardens?

Water tanks and worm farms, do they have a part to play in our outdoor areas?

Only four months to go before questions like these will be addressed at The Glebe Gardens Forum from 7-9pm on Wednesday 15 November.

## Teapot Show

Inner City Clayworkers Gallery will host the popular Teapot Show from 28 July to 3 September.

More than 100 teapots are expected to be displayed during the show.

The Gallery is located on the corner of St Johns Road and Darghan Street, Glebe. Gallery hours are 10.30am to 6pm, Wednesday to Sunday.

## Glebe Music Festival

The dates for the 17th Annual Glebe Music Festival are Friday 10 November to Sunday 3 December 2006. The theme is "The Glebe Music Festival goes to the Opera".

## OMNI

This organisation won't endow you with any godlike attributes of omnipotence or omniscience or transport you as in an omnibus but if you are a male aged fifty years or more it could be just what you are looking for.

The acronym stands for Older Men: New Ideas and the local groups provide an opportunity for men who have left the work force to meet and discuss topics of mutual interest, particularly those related to the problems of aging.

The Leichhardt group meets at 9.30am on the second and fourth Fridays of every month at the St Helen's community centre at 184 Glebe Point Road, next to the Glebe Library. For any further information please ring me on 9660 3240 or Bill Bloodworth on 9660 7964.

- Ian Edwards

## Science and the Law: A Day in Court

Take part in *National Science Week* locally. UTS Moot Court, Law Faculty, Haymarket - Monday 14 August, 10 am - midday

Find out about forensic science by participating in a hypothetical murder trial. Entry free, but bookings are essential. For more information browse to [www.tallpoppies.net.au](http://www.tallpoppies.net.au)

## City of Sydney Councillors

### Lord Mayor

Clover Moore MLA

### Councillors

Phillip Black  
Verity Firth  
Chris Harris  
Marcelle Hoff  
Robyn Kemmis  
Michael Lee  
Shayne Mallard  
John McInerney  
Tony Pooley



Phone the Town Hall, 1300 651 301, for contact details.

## Forest Lodge Public School

Home of The Glebe  
Society Archives



Phone 9660 3530

# For your diary ...

**Thursday 3 August**, 7pm - Thirsty Thursday - Dinner at *La Tavolaccia*, 355 Glebe Point Road.

**Wednesday 9 August**, 7.30pm - Glebe Society Management Committee Meeting - The Old Fire Station, 115 Mitchell Street. All members welcome.

**Sunday 27 August, 11am - The Glebe Society's 37<sup>th</sup> AGM - Benledi**, 186 Glebe Point Road.

**Tuesday 5 September**, 6.30 - 8.30pm - An Inconvenient Truth - The Palace Cinema, Norton Street, Leichhardt. See the enclosed booking form.

**Thursday 7 September**, 7pm - Thirsty Thursday - Dinner at *La Tavolaccia*, 355 Glebe Point Road.

**Wednesday 13 September**, 7.30pm - Glebe Society Management Committee Meeting - The Old Fire Station, 115 Mitchell Street. All members welcome.

**Sunday 24 September**, 11.30am - 2pm - Phoenix Rising - from the Ashes - the Glebe Walter Burley Griffin Incinerator, corner Forsyth and Taylor Streets. See the enclosed flyer.

**3 October – 22 October** - Art & About 2006.

**Friday 10 November to Sunday 3 December** - Glebe Music Festival.

**Wednesday 15 November**, 7 - 9pm - Glebe Gardens, 1820-2010, at Glebe Rowing Club, at the end of Ferry Road.

**Sunday 19 November** - Glebe Street Fair.

## Contacting The Glebe Society

### Mail

All correspondence should be addressed to:

The Glebe Society Inc  
PO Box 100, Glebe NSW 2037

### Website

The Society has a growing website ([www.glebesociety.org.au](http://www.glebesociety.org.au)) for the information of members and anyone with an interest in Glebe.

The website will only flourish if members use the site. Send contributions or comments to [webmaster@glebesociety.org.au](mailto:webmaster@glebesociety.org.au)

### The Bulletin

We are glad to publish letters or articles on any matters of interest to Glebe, any topic raised in the *Bulletin*, or any issues relating to the Glebe Society. Write to the address above or email [editor@glebesociety.org.au](mailto:editor@glebesociety.org.au)

### Disclaimer

Views expressed in this *Bulletin* are not necessarily those of the Glebe Society Inc.

### Bulletin Deadline

The next edition of the *Bulletin* will be published in August. The deadline for contributions is **Wednesday 16 August**.

## The Glebe Society Inc

Established 1969

### Management Committee:

President	Bob Armstrong	9660 4189
Vice-president	Bruce Davis	9660 7873
Immediate Past President	Andrew Craig	9566 1746
Secretary	Liz Simpson-Booker	9518 6186
Treasurer	Bruce Davis	9660 7873

<b>Committee Members:</b>	Anne Fraser 9660 7560	John Gray 9518 7253
	Bill McCarthy 9660 5119	Jan Wilson 9660 2698

### Sub-committee Convenors:

All sub-committee convenors are *ex officio* members of the Management Committee

Arts, Culture and Media	Sue Ingram	9692 8534
Bays and Foreshores	Tony Larkum	9660 7030
Wentworth Park	Anne Fraser	9660 7560
Climate Change	Bill McCarthy	9660 5119
Environment and Open Spaces	Bill McCarthy	9660 5119
Heritage	David Mander Jones	9552 4172

Infrastructure Defect Reporting	Margaret Sheppard	9660 4121
Membership	Cheryl Herden	9660 7371
Planning	Neil Macindoe	9660 0208
Transport and Traffic	Chris Hallam	9660 3670

### Adopt-a-Park Contacts:

**Foley Park:** Bobbie Burke (9692 0343) **Kirsova:** Fay & David Mander Jones  
**Paddy Gray Park:** John Gray

### Other Contacts:

Archivist	Lyn Milton	9660 7930
Blackwattle Cove Coalition (BCC)	Anne Fraser	9660 7560
Bulletin Editor	Edwina Doe	9660 7066
History of Glebe	Max Solling	9660 1160
History of the Glebe Society	Jeanette Knox	9660 7781
Liaison with CityRags	Bob Armstrong	9660 4189
Liaison with CoGG	Bob Armstrong	9660 4189
Liaison with FLAG	Jan Wilson	9660 2698
Publicity	Sue Ingram	9692 8534
Social events	Jeanette Knox	9660 7781
Website	Cynthia Jones	9660 2451

# In this issue

- I Glebe Point Road Revitalisation - p1-4
- I Climate Change and the Glebe Society - p5
- I Annual General Meeting Notice - p5
- I Planning Matters - p6
- I Blackwattle Cove - p7
- I Two Forest Lodge stories - p8
- I Glebe Matters - p9

The GLEBE  
PO Box 100



SOCIETY Inc  
Glebe 2037

POSTAGE  
PAID

## Membership of the Glebe Society

Individual member	\$45
<b>Joint</b> (2 people, one address)	\$55
<b>Household</b> (more than 2 adults and/or children, one address)	\$60
<b>Concession</b> (student or pensioner)	\$20
Business or institution	\$110

Download a Membership Form from our website ([http://www.glebesociety.org.au/AboutTGSI/Membership/Membership\\_application.pdf](http://www.glebesociety.org.au/AboutTGSI/Membership/Membership_application.pdf)).

Or write to PO Box 100, Glebe, 2037 or phone the Secretary, Liz Simpson-Booker, on 9518 6186.

If you have a matter that you would like to discuss with the Management Committee, please phone the Secretary.

## Community Contacts

**Manager-Neighbourhood Services Centre ;** Glebe, Forest Lodge, Camperdown, Ultimo & Pyrmont: Baharak Sahebekhtiari, Phone: 9298 3191, Mob: 0417 426 201

**Email:** [bsahebekhtiari@cityofsydney.nsw.gov.au](mailto:bsahebekhtiari@cityofsydney.nsw.gov.au)

**Glebe Town Hall Office:** 9298 3190 8.30am-5.30pm Mon- Fri

**Sydney City Council Customer Service**

**Telephone (24 hours):** 9265-9333

**email:** [council@cityofsydney.nsw.gov.au](mailto:council@cityofsydney.nsw.gov.au)

**website:** [www.cityofsydney.nsw.gov.au](http://www.cityofsydney.nsw.gov.au)

**Dumped Shopping trolleys:** Bi-Lo - 9281 4511. Most other major stores - 1800 641497. Pacific Services - 0500 847 000 or [trolleys@pacificservices.com.au](mailto:trolleys@pacificservices.com.au).

**Aircraft noise:** 1800 802 584