



Glebe Society Bulletin

8/2000 September/October

What do we want for Glebe?

The Glebe Society is preparing a 'shopping list' which will form a basis of discussion with our suitors when and if Lord Mayor Frank Sartor's 'grab for Glebe' proceeds.

As reported in the April/May edition of the *Bulletin*, the Society proposes, in association with the Chamber of Commerce, to host a community forum to discuss the issues raised by Cr Sartor's proposal that the boundaries of the City Council be expanded to take in several surrounding suburbs.

The shopping list will include a wide range of matters which residents believe are important for responsive and representative local government in Glebe, and proposals for new or improved facilities for the suburb.

A draft list was circulated at a recent meeting of the Management Committee, and the Committee decided to invite more input from members. The list will continue to evolve over the next few months as

suggestions are received. Our aim is to have a well researched document ready for public discussion as soon as we know how the State Government intends to respond to Cr Sartor's proposal.

The list below contains a selection of the ideas that have been received to date; it is illustrative only and will be extensively edited and expanded before it is finalised.

This is a brainstorming exercise, and ideas can be as imaginative and as expensive as you like, provided they improve life in Glebe and are relevant to the responsibilities of our local government council.

It's rumoured that the City Council has tens of millions of dollars in its coffers, so maybe Cr Sartor would be willing to spend some money on Glebe? Even cash strapped Leichhardt is likely to be responsive when its borders are under threat.

Bruce Davis

Can you add to this list?

FORM OF LOCAL GOVERNMENT

- Glebe should be represented by two councillors who are resident in Glebe, and who are elected exclusively by Glebe residents.
- Meetings of council and its committees should be open to the public.

AMENITIES

- There should be public access to the foreshore from Bicentennial Park to Blackwattle Bay.
- *Bellevue* should be restored as a community art gallery and coffee shop with daytime only opening hours.
- Glebe Town Hall should be renovated as a cultural and arts centre, with facilities available for rental to craftspeople.

YOUTH

- Establish a permanent youth worker at the Forsyth Auditorium.

PLANNING

- Council planning policies and decisions should be aggressive in protecting the heritage character of the suburb.

... continued p2

The Changing Face of Glebe

Next to Glenmore Meats in Wentworth Park Road is a rather dilapidated, dirty and forbidding three-storey brick factory known as the Brelco Building. In this building, for the last twenty-odd years, John McColl and friends have been training Glebe youth in the pugilistic arts. Glebe has a long history of boxing: Tom Laming's Golden Gloves Gym, at 49 Glebe Point Road, now the multi-award winning Gleebooks, is commemorated with a pair of golden boxing gloves set in the pavement by The Glebe Point Road Streetscape Committee. Dave Sands, an indigenous boxing champion, is remembered with an engraved stone tablet near the Jubilee Fountain (also revamped by the Streetscape Committee).

The image of the punch-drunk boxer, together with more recent insights of medical science, have brought fisticuffs into disrepute, but it has a proud history as self-defence, and a means whereby poor boys could better themselves. The discipline and training McColl offers his young charges, together with the confidence skill brings, plus the need to blow off surplus energy and aggression, outweigh possible disadvantages from taking it up as a career. There has been a broad consensus for many years that McColl's Gym fulfils a useful, even an irreplaceable, social role, and should be retained.

In the meantime, the building itself has increased in importance. Some years ago, a friend of my sister approached me with valuable

information about what appeared to be a building ripe for demolition. It was his father who had built it, using a steel truss construction previously unknown, resulting in the unusual curved roof. He brought to me as well a mass of information, including a whole volume of photographs about the engineering inventions first manufactured here, including innovative pumps and the first automated petrol bowlers manufactured in Australia. I put him in touch with the Local Studies Librarian at Leichhardt Council, and moved to have the building heritage listed.

The Department of Housing has now found a developer who will conserve the building, converting it to residential use and providing a comprehensive set of facilities over two levels that will enable McColl's Gym to relocate in the building once it has been refurbished. There are seventeen one-bedroom and thirteen two-bedroom units, with parking located in an excavated basement.

The Society has written supporting retention and recycling of the building, and especially provision for McColl's Gym, and suggesting the impressive spandrels on the Wentworth Park Road elevation be retained and a full interpretation of the building be posted in a publicly accessible foyer. Once the building has been properly cleaned and reglazed, it will lose its forbidding aspect and take its place as one of the most significant former industrial buildings of Glebe.

HELPI

A member has suggested that, because of the demanding nature of planning, I could use some help. So here goes! Would anyone interested in going to Leichhardt Council meetings please ring me on 9660. 0208. They are usually more entertaining than the telly!

Neil Macindoe

... continued from p1

PARKS

- Wentworth Park should be upgraded, and developed to meet the needs of Ultimo/Pymont and Glebe's growing resident population. The dog racing track should be relocated to an area closer to the homes of patrons of the sport, and the feasibility of re-routing Bridge Road underground to enable the extension of the park to the foreshore should be investigated.

TRANSPORT

- Council should encourage better integration of the light rail with other public transport, including extension of light rail to Circular Quay.

LITTER

- Improve litter and garbage collection along Glebe Point Road.
- Conduct regular clean-ups of streets and lanes.

HERITAGE

- Develop a proposal for the restoration and reopening of the old Glebe Island Bridge as part of a tourist precinct linking the Fishmarkets and the Sydney Heritage Fleet at Rozelle Bay.

COMMUNITY FACILITIES

- Build a fully accessible and staffed neighbourhood centre at the rear of St Helens Community Centre.

Please send your suggestions to the Secretary:

The Glebe Society Inc, PO Box 100, GLEBE 2037

-or e-mail to ebooker@mail.usyd.edu.au

The President's report 1999/00

When I first started making notes for this report, I was preoccupied by all the things that I had failed to achieve. It was only when I leafed back through the Bulletins that I realised how much had happened since our last AGM. This does not excuse me or the Management Committee in general for our lack of progress on some things: it simply drives home the truth of the old saying "so much to do, so little time."

I would like to spend a few minutes on some issues which I feel were particularly important.

Our treasurers for the past couple of years have regularly pointed out that the Society's income was not keeping up with its spending. Our main expense is the *Bulletin*, and the Management Committee was not willing to reduce its size or frequency because we see it as our public face to the Society's membership and the broader community (we distribute 60+ copies to other community groups, the media etc.) Consequently we had to raise more money to keep the Society afloat.

Our income is from two sources: membership subscriptions (including some generous donations) and fund raising functions.

Our social functions are a lot of fun, and this year the light rail trip and the dinner raised about \$2000 which will keep the Bulletin's presses rolling for a while. We will probably have some other small functions soon. However we must keep these activities in perspective: they are a means to the Society's main ends, not an end in themselves.

As you know, the Management Committee decided to increase the cost of membership subscriptions this year. This was not something we wanted to do, but given the fact that we had been forced to transfer funds from our reserves to cover the day-to-day expenses of the Society, we concluded that we had no other course open to us.

Memberships were also a cause for concern because there was a perception that although we were attracting some new members, we were not always successful in holding

existing members. We have now redesigned our membership database and hopefully our renewals system will work better this year. This, along with several initiatives to attract new members, should ensure a gradual increase in income from subscriptions. The new database will also give us a better insight into the makeup of the Society's membership.

I'm delighted that Gail Pratt and Patrick McNeice have agreed to take on the maintenance of the membership database and the treasurership of the Society. Hopefully administrative matters will not take up so much time in future, and we will be able to concentrate on other more exciting issues.

There are two other matters:

You will recall that we had a 'Meet the Councillors' evening here at Benledi last year, and while this went well enough, and while the mayor, Máire Sheehan, attended a management committee meeting earlier in the year, we are losing touch with what is going on in Leichhardt Council. We need to give this matter some thought,

I am also concerned about our ability to attract and hold younger people, both in the Society in general and in the Management Committee. As Jenna Reed Burns, Winsome Byrne and others point out, it is very difficult to meet the demands of a full-on, full-time job and still contribute in a meaningful way to the Society. I suspect that the pressures of the modern workplace mean that many community groups are deprived of the skills and the different perspective that younger professionals have to offer. This in turn will make these groups less relevant, and therefore less likely to attract new members - a vicious circle. If we don't do something, groups like The Glebe Society run the risk of becoming the preserve of retired and semi-retired people. If we are perceived as a group which is not representative of the broader community, our standing and

influence will be diminished, and we will be less likely to achieve our objectives.

I flagged this matter last year, but unfortunately we only got as far as drawing up an interesting list of new initiatives. I aim to try to make some progress next year, and would be grateful for any help members might be prepared to offer.

In conclusion, I would like to thank the members of the Management Committee for their support and hard work during the year. In particular I should mention those Committee members and convenors who are retiring -

- Ted McKeown, who has agreed to stay on as our public officer;
- Jenna, who, I am sure, will continue to clean up Glebe in a non-official capacity;
- Ian Edwards, who will continue to help with delivering papers for the Management Committee and despatch of the Bulletin; and
- Winsome who has only been involved as convenor of the Environment sub-committee for a short time, and who I hope may find time to get involved again at some time in the future when her life is less hectic.

My thanks also to two members who have passed the baton to others, but who will remain members of the Management Committee -

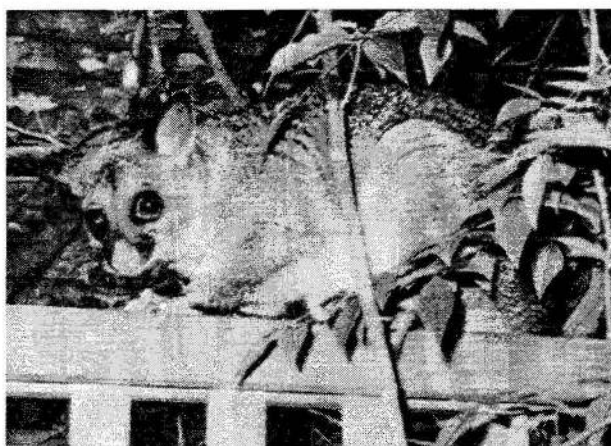
- Jeanette Knox is standing down as our Traffic and Transport convenor after 16 years, but has agreed to take on the vacant position of vice-President, at least for the time being, and
- Alan Hunt, who managed to get the Society's books audited in time for this meeting.

In particular I would like to thank our Secretary, Liz Simpson-Booker, who kept me and the Society on the straight and narrow with the utmost efficiency and tact over the past year.

Bruce Davis

[Bruce has edited his Report to the Annual General Meeting for publication. Minutes of the meeting are available from the Secretary.]

Letters to the Editor



Dear Glebe Society

We thought that the FROGGs people might be interested to know that this possum was being chased by noisy currawongs down and across St Johns Road (Forest Lodge)

two weeks ago, until he finally made it to safety in our side garden.

We wondered if he was a refugee from the old Children's Hospital site.

By the way, we haven't seen any blue wrens lately, although we used to see them regularly. Has anyone in Glebe seen any recently?

Yours sincerely,

Helen Randerson and Ward Oliver

Dear Madam

Under sustained pressure from Walker Corporation and South Sydney Council, the RTA finally overruled Leichhardt Council and opened Francis Street to two-way traffic in July.

This was the most recent element of a struggle which has spanned over two years. Nearby businesses and residents originally campaigned to have Francis Street closed altogether at the intersection with Glebe Point Road, then accepted a compromise to allow a lane of one-way traffic.

Within a week of the re-opening, a truck had run into the awning of the building at the intersection (Badde Manors Café). A week later a second truck did the same thing and increased the damage. Council erected some water-filled barriers and these were also hit by a truck. Finally, two concrete and steel bollards were installed. These are also regularly hit by trucks – however so far they seem to be protecting the building.

It is virtually impossible for a large truck to safely negotiate the sharp left turn from Francis Street to Glebe Point Road. They do so illegally, ignoring signs prohibiting them from entering the intersection.

A progress meeting to assess the effects of the opening of Francis Street to two-way traffic was called by the RTA and Sandra Nori in August. The RTA acknowledged the danger posed by trucks, and presented their preliminary traffic measurements. These show (as predicted by earlier studies) that allowing traffic to exit from Francis Street into Glebe Point Road has a minimal effect on traffic problems in Bay and Mountain Streets in Ultimo. This had been the main concern of South Sydney Council and the reason for opening Francis Street to two-way traffic.

Despite this and despite representations made by the Mayor of Leichhardt to the Minister, the 'trial' opening of Francis Street is to continue until after Christmas (peak shopping time for the Broadway Centre).

We just hope that Badde Manors will still be standing.

Robert Sebes, Proprietor, Badde Manors Café.



Our new Traffic Convenor, Steve Stewart, will report in the next *Bulletin*. Meanwhile, Neil Macindoe has drawn attention to the following Letter to the Editor of the *SMH* from George Paxinos, a former President of the Light Rail Association, which appeared in August:

"Extending the Pyrmont light rail line to Lilyfield is welcome, but it should continue along the old goods line to Leichhardt, the domestic terminal and Botany. It should then extend along Anzac Parade to the CBD through the unused St. James tunnels (under Hyde Park) with direct cross-platform connections with heavy rail, providing tracked transport to the University of NSW, Randwick Racecourse, Centennial Park and Fox Studios."

Meet Nick Dyer, Glebe Ward Councillor

We thought it would be interesting to talk to each of the four Councillors who represent the Glebe Ward on Leichhardt Council. Below are some views from Nick Dyer; an interview with Councillor Chris Windsor will be published later this year.

Nick Dyer, one of the four Glebe Ward Councillors, was elected to LMC last year. He comes originally from Canberra and has always been interested in politics. He joined the Liberal Party about five years ago and stood for election to local government because he was "curious to see how it worked" and to see if he would, at some stage, like a career in politics. Though the three Liberal Councillors on LMC caucus on major issues, they generally vote independently, and not as a group.

In Nick's view, the most important issue for LMC is its financial situation, and, as no group has the majority on Council, "it's government by committee and there is a lack of desire to do anything about it". Finance is an area that gets a lot of consideration among the Liberals on Council, and one on which they generally see eye-to-eye.

"We need to deal with the deficit which would be very tough to do because cutting spending would cause some pain." The areas to cut, he said, would need to be decided by Council's Finance Committee which has met only once since the election of this Council in September 1999. "The easy way to handle the debt is to increase the revenue, because this brings less criticism than cutting spending – but you can't keep increasing revenue for ever. With a \$17m debt, and additional borrowing each year (\$1.8m in 2000), Council repays its debt at a rate of \$400,000 p.a; and it will be 21 years before we're in the clear.

"Council should only spend as much money as it earns in rates and other income. This year we have to meet all the borrowings of previous Councils *and* the interest bill which is about \$1.7m a year. If previous Councils had taken a 'no-debt' position, we would have an extra \$1.7m to spend each year."

Nick is very much in favour of the ward system which operates in the Leichhardt Municipality. It lessens the work load and allows Councillors to give more attention to individual matters. "It is unrealistic and unfair to applicants to expect Councillors to get a grip on 27 separate issues (as happened at a recent meeting of the full Council) and when you deal with matters at 11.30pm, everyone is tired, cranky, and wanting to get the meeting finished – it leads to inconsistent decision-making."

He identifies the major issues for the Glebe Ward as "crime and rubbish". While he was unaware of the Mayor's Inter-Agency meetings on crime, he felt that something radical is needed to deal with the rubbish and litter problem because what is currently being done is not working, and is costing a lot of money. As one option he suggested that "Council collect the wheelie bins but *not* pick up the dumped rubbish in the lanes, handing the responsibility back to the residents with a corresponding reduction in rates."

While he agreed that Council's job is to provide services for residents and that rubbish is certainly a local government issue, he reiterated "Council should only spend what it earns."

Looking at the viability of business on Glebe Point Road, he felt there was bound to be "some dislocation when something like The Broadway Shopping Centre moves in, and eventually the tone of Glebe Point Road will change and evolve. If the demand is there the shops will come – I'm a bit of a believer in the market sorting these things out. The worse thing that could happen is for some government to get involved".

Regarding development applications, Nick said that unlike a lot of Councillors he "starts with a position of approval and needs to be convinced otherwise." He agreed that Glebe as a 'Conservation Area' needs to be preserved, but has no objection to modern architecture on a new site, and no problem with the sympathetic alteration of the façade of a building. As an example he cited two properties at 105-107 St. John's Road which were originally two-storey houses and have been converted to three-storey without, in his opinion, degrading the streetscape.

Nick enjoys being on Council and would like to see it "set the agenda rather than merely respond to issues". The most satisfying thing for him to date was to have his new assessment procedure for development applications accepted, though it has not yet been implemented. The most difficult aspect of being a Councillor was that "every decision you make upsets someone, depending on which side of the fence they're on."

Nick thought the way in which the Lord Mayor is lobbying to take-over certain inner city areas was "bizarre"; however, he thinks that to "tap into that [City Council] rate base might not be such a bad idea for Glebe."

He is available to talk with residents by appointment – he can be contacted on 9552. 4714. He does not have a regular meeting time and place, and is mostly consulted by people disgruntled with planning decisions.

Nick is a (recently) single 35 year-old builder who has lived in Glebe for 12 years. One of his pastimes is mountaineering, and he is attempting to climb The Seven Summits – the seven highest peaks on the seven continents of the globe – and has just returned from climbing Mount Elbrus, the highest mountain (at 18,500 ft) in Europe.

He only saw the last episode of *Grass Roots* on ABC TV, and thought it "somewhat over the top", nevertheless he enjoyed it and commented that "Council staff think it's *very* funny".

Bobbie Burke

The Heritage Fleet

THREAT TO ROZELLE BAY SITE?

According to waterfront sources there is a strong push, behind the scenes, to move the Sydney HERITAGE FLEET out of its present Rozelle Bay site.

TGSI understands that the release of the Master Plan for Rozelle and Blackwattle Bays will follow quickly after the Olympics. Although there is clear opinion, in at least one government agency, that the parameters for the Master Plan were too narrow and a new process should be undertaken. For example, the old Glebe Island Bridge was outside the Master Plan area for Blackwattle and Rozelle Bays.

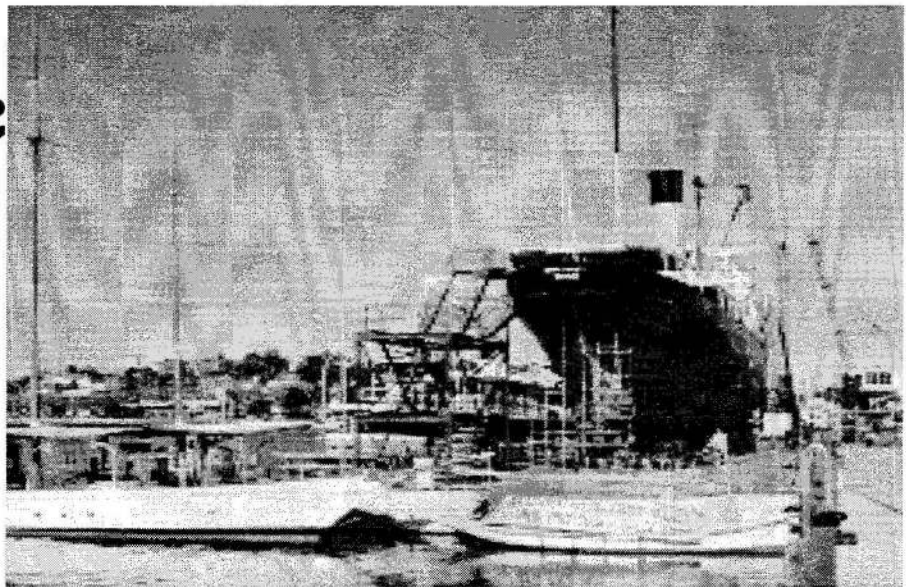
To revisit the Master Plan would be consistent with the Government's initiative, "Sharing Sydney Harbour", which was released on Tuesday 12 September. Minister for Urban Affairs and Planning, Dr Refshauge, presented it as a framework for future harbourside development. A key element was his pledge to protect waterfront sites for desirable and necessary activities that do not have the financial resources to compete with commercial ventures.

"Sharing Sydney Harbour" pursues four themes;

- the natural harbour - promoting a healthy sustainable environment on land and water;
- urban harbour - a high quality urban environment;
- working harbour - a prosperous, working waterfront and an effective transport corridor;
- people's harbour - a culturally rich, accessible, active place for people.

Two public meetings to consider the bays Master Plan (Glebe 1998 and Annandale 1999) expressed great support for the Sydney HERITAGE FLEET to remain at Rozelle Bay.

However, the Waterways Authority is said to be actively working for the FLEET to be moved out. Re-building the Rozelle Bay wharf cost at least \$15-million



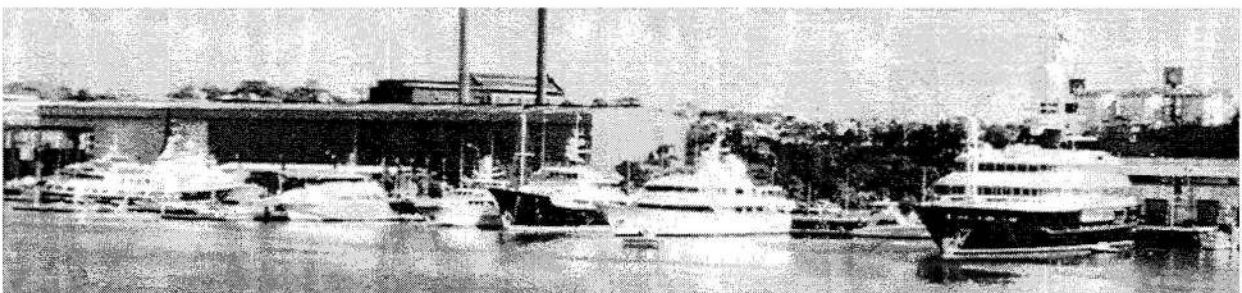
The HERITAGE FLEET (20/9/2000) – its vessels jammed into minimal wharf space to make way for the 'Super Yachts', a move that cost the volunteer group about \$80,000 and months of wasted effort. The new Rozelle Bay wharf is a perfect height and design for a permanent home for the FLEET's steamer base and workshops.

– money that was to be largely recovered from fees paid by a fleet of 'super yachts' coming for the Olympic Games.

The reality has been a disappointing take-up of the marina space. But TGSI believes this is no excuse to push the HERITAGE FLEET aside in the search for a high-bidding user to get back some of the cost. If the FLEET was given permanent tenancy of 200 metres of the new wharf, it would be a State contribution of less than one year's Federal funding of The National Maritime Museum.

Given secure tenure of such an area the Sydney HERITAGE FLEET could fulfil its mission to: "acquire, conserve, restore and operate heritage vessels with a significant maritime background: and to acquire and conserve related maritime artefacts for the benefit of all Australians". It would have space to demonstrate the trade skills of vessel restoration and display many items of marine machinery now held unseen in storage in various parts of Sydney. This would create the kind of 'touchy feely' exhibition that people enjoy and help support the HERITAGE FLEET.

TGSI put forward the suggestion in its submission to the Draft Master Plan for Rozelle and Blackwattle Bays, that such a facility, coupled with operation of the Glebe Island Bridge, would be the basis of a heritage precinct to add to the tourist attractions of 'the harbour city'.



While the flags said 'Sydney Welcomes the World' not many people came by boat to the Rozelle Bay 'Super Yacht' Marina. Our picture shows six of ten berths occupied on 20/9/2000. Seventeen additional spaces were still vacant.

The heritage precinct would fulfil three of the four stated themes of "Sharing Sydney Harbour" - natural harbour by maintaining the sheltered area of waterway of Rozelle Bay; working harbour by providing the space needed for vessel restoration; and people's harbour by offering public access to the historic vessels and exhibits.

Establishment of a permanent home for the Sydney HERITAGE FLEET would bring an end to thirty five years of the organisation's forced wandering around a variety of Sydney Harbour sites. Constant enforced shifting has squandered the very precious commodities of tens of thousands of hours of volunteer time and tens of thousands of dollars of hard earned fund raising. The worth of such a home is best illustrated by examination of the *James Craig*, now nearing completion. All the heavy hull restoration was achieved in a period of stability of tenure of the organisation's working site in Rozelle Bay. The vessel was there long enough for the street beside the work site to be named 'James Craig Rd'.

GUEST SPEAKERS

Addressing TGSI September Management Committee meeting HERITAGE FLEET CEO, John Smith, said there are always offers from commercial bodies with waterside locations to provide wharf space for finished craft such as the *Lady Hopetoun*. But their interest disappears when asked whereabouts on the wharf the truckload of bunker coal can be dumped - a dark side to the most elegant steamers. Because the HERITAGE FLEET places great store on accurate restoration, coal fired ships must be fired by coal.

John told the meeting that while the FLEET would be happy to make its home in Rozelle Bay, it was his task to follow up every possible opportunity to achieve the holy grail of a base with security of tenure.

Another possible site for the FLEET is the former Army graving dock at Woolwich. A site still tied in negotiation between Federal and State Governments that, at best, will take some years to resolve.

The meeting was also addressed by Mal Hiley, the Chairman of the Sydney Harbour Maritime Forum. His face would be known to members who attended the previously-mentioned public meetings where he spoke on behalf of the waterfront contractors based around Rozelle Bay. Many of these organisations are in almost as difficult a situation as the Sydney HERITAGE FLEET - operating from working sites with no guarantee of tenure and few other possibilities for relocation.

At both of the public meetings there was support for the contractors, despite the acknowledged untidiness of their sites. The Society accepted the attitude of the public forum and will support retention of the contractors at sites scattered about the western end of Rozelle Bay.

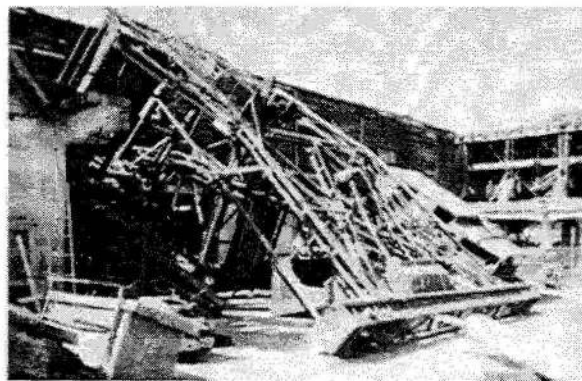
THE ORIGINAL SUBMISSION

Members will recall that TGSI identified seven key issues in its submission to the Department of Urban Affairs and Planning in response to the Draft Plan:

1. Blackwattle and Rozelle Bays must not be made "places of last resort" for industries now housed in other harbour sites where they have some opposition from local communities.
2. A suitable site must be quarantined from bidding to provide a permanent home for the HERITAGE FLEET's workshops and steamers.

3. The Glebe Society believes the potential exists to create a Heritage Precinct based on Glebe Island Bridge and the HERITAGE FLEET.
4. Strict noise and emission controls must be enforced on new industries and port roads.
5. When the 'super yachts' have gone, vessels berthed in Rozelle Bay should lie alongside wharves to minimise the loss of water area.
6. Rowing regatta courses must be designated. Blackwattle and Rozelle bays have more than a century of rowing club history.
7. Home unit developments will soon increase the immediate area's population by thousands of people. They will need greater recreational facilities, including water space.

The fate of the coal discharge plant



Gas torch butchery - demolition, *not* dismantling. TGSI is assured the discharge gantry will be re-erected.

There has been considerable membership concern expressed over the fate of the coal discharge plant next to the Fish Market.

TGSI has been assured the gantry's removal is only temporary. A departmental answer, through Sandra Nori's office, was emphatic that the gantry will be reassembled and retained. However, the contractor who took it down has hacked it to pieces with oxyacetylene cutting torches. The rebuilding task will be much more difficult and, therefore, far more costly.

The official response

"Following two detailed structural engineering reports, one in association with the Conservation Management Plan for the Coal Bins and Associated Structures, the Authority decided it had no choice but to temporarily dismantle the gantry crane. Both reports advised that the crane was a significant risk in danger of partial or complete collapse and posed a threat to the public and other heritage fabric on the site. Despite an inspection program earlier this year, loose sections of the crane continued to fall and posed a danger to nearby pedestrians and vessels. The crane has therefore been cut into manageable sections and safely stored on site and will be reassembled and returned to its original position when the coal bins are repaired and refurbished as planned for in the draft Master Plan."

Collin Hills

[With thanks to Chris Korgemetz for the photographs.]



from the Editor's Desk

OPEN AIR CINEMA IN BICENTENNIAL PARK

The Glebe Society received a copy of the proposal from Big Space Productions to operate an outdoor cinema six evenings a week in Bicentennial Park this summer from 1 December to 18 February. The application was advertised in the local press, and Council sent notification to some 240 owners and occupants of properties likely to be affected.

The Committee decided not to make a formal submission on behalf of the Society because we believe there is quite a wide divergence of opinion in the community. If the proposal does go ahead we would be in a better position to make some informed comment.

We advise members that Council will receive submissions on the proposal up until the application goes to a full Council meeting for decision – this is likely to be either the meeting scheduled for 19 October or 23 November.

The Activity Application can be viewed at Council Chambers.

FATE OF GLEBE POINT ROAD BUS SERVICES

On 6 August we wrote to NSW Transport Minister Carl Scully regarding the GPR bus services [see *Bulletin* 7/2000, p1]. On 15 August the Minister's office replied as follows:

"Mr Scully is having the matters raised in your representation examined and a response will be provided as soon as possible."

As of 22 September, no reply has been received.

ANNUAL DINNER

The Society held its Annual Fundraising Dinner at Colors Restaurant on August 13 and about 40 people enjoyed a convivial night together in what were once the cellars of the historic UNIVERSITY HALL.

Dorothy Bottrell from the Glebe Youth Service gave a short talk about the services provided to the young people of Glebe and the Society is seeking ways in which it can be involved [see **GYS** →].

The most colourful part of the evening was the auctioning of dinner vouchers by President, Bruce Davis, who wielded a (sort of) gavel with much gusto. Bill McCarthy was the successful bidder for a Darling Mills Restaurant voucher and Ted McKeown bid highest for a Toxteth Hotel meal voucher.

Many thanks to:

Sara Adey of
DARLING MILLS
and Shaughn
Murphy of the
TOXTETH HOTEL



for their generous donations.

Raffle prizes were also kindly donated by GLEEBOOKS, HOYTS ON BROADWAY and TONI'S DELI – the Society gratefully acknowledges the continuing generosity of all sponsors. Cynthia Jones

PSUEDO-PUBLIC SPACES?

THE 'MALLING' OF AUSTRALIA

Shopping malls "have no clocks and you can't tell whether it's day or night. They're designed to promote impulse buying, and once inside it's never easy to find your way out. They're pseudo-public spaces where behaviour is tightly controlled. But for many they've become the centre of community life."

This month THE COMFORT ZONE on ABC Radio National explored the architecture and social meaning of the shopping mall. Transcripts are available from the ABC Web site:

<http://www.abc.net.au/rn/czone/>

GYS GLEBE YOUTH SERVICE

is looking for some new volunteers to assist with cooking at Drop-in.

We provide a meal for the young people each day and need some help with it. If you could assist one or more days per week, from 3 – 5pm, it would be much appreciated.

Some days we do sandwiches and fruit or hotdogs, but most days we do a meal – for instance, stir-fry, shepherd's pie, pasta, etc.

PREREQUISITE :

a good sense of humour!

If you can help, please contact the Co-ordinator, Dorothy Bottrell on 9552. 2873.

RECYCLED CORKS

Some of us can't relinquish the habit of collecting wine bottle corks. We collected them when our good friend the late John Hoddinott co-ordinated the large Glebe collection on his and Dorothy's front verandah. What will we do with our bags of corks now? The Body Shops will take them at the Grand Walk, Queen Victoria Building and Shop 202, Mid City Centre, Pitt Street Mall. Another collection point is the Girl Guide Shop at 1 Buckingham Street, Surry Hills.

AMNESTY INTERNATIONAL GLEBE

The July fund-raising performance, 'Voices for Freedom', at Glebe's Salvation Army Hall was a sell-out. Amnesty International Glebe group was delighted at the performance's success, raising well over \$2,000 for its campaign on behalf of Radhia Nasraoui, a Tunisian lawyer persecuted by authorities in her own country because of her human rights work.

Alison McKeown

ERRATA

In *Bulletin* 6/2000 (p7) we reported on the Glebe Diggers' Memorial, referring to an Anzac Day dawn speech by 'Major M.J. Mitchell'; the report should have read 'Major M.J. Miller'.

Graffiti Art and DJ Workshop

Around 30 young people from the Leichhardt Municipality will be participating in a Graffiti Art and DJ workshop at Glebe High School during the September school holidays. This is an initiative of Leichhardt Council which aims to inspire our young people to look at creative avenues for future employment, by giving young people an opportunity to get some hands-on experience in mixing beats and in designing a graffiti piece.

Jo and Anthony (two local boys who are great graffiti artists) are coming down with a supply of cans and panels to teach the tricks to aerosol. Together the group of young people will design and paint a mural based on input from all attending the Workshop. Jo and Anthony teach respect for the art and discourage young people from senselessly defacing property. This pro-active attitude to the graffiti problem is just one of the new graffiti solutions employed by Council.

The same day Luke Harland, a respected DJ from Surry Hills, will be coming down to play a 'Hard House and Trance' set. After he has tantalised everybody's ear drums he will take on students and demonstrate the technique of 'turntablism', 'beat mixing' and 'scratching'. Luke has played at parties, and clubs such as the Palladium, Chemistry and Pangea. He will talk about the promotion side to the music industry, how to go about organising dance nights, and the best avenues to take when trying to get your music recognised.

All in all, the day will be filled with great music, great art, and a bunch of great young people. It's sure to be a big success. For more information ring me at Leichhardt Council on 9367. 9279.

Fiona Poole, Youth Activities Officer, LMC

ATTENTION: Music Lovers, Historians, Musicologists

Included in this *Bulletin* in the flyer for this year's Glebe Music Festival. The Director, David McIntosh, is currently exploring ways in which the 2001 Festival might reflect the Centenary of Federation celebrations planned for next year. Some of the possibilities include:

- a concert of music that would have been played in 1901;
- a concert of music by composers alive in 1901;
- a concert of music by composers born in 1901;
- a concert performed in Glebe in 1901;
- a concert of music by composers linked in some way from 1901 to 2001.

David is interested in canvassing views from Glebe Society members. If you have any thoughts on the above or other suggestions, you could talk with him during this year's Festival, send an email to: <mcintosh@glebemusicfestival.com> or write to:

Dr E David G McIntosh
93 Regent's Park Road
London NW1 8UR UK

Notes from the Management Committee meeting held 13 September

2000/01 COMMUNITY PROJECT

The Committee has decided to support the Glebe Youth Service over the next 12 months. This support will take various forms. In the first instance, part of the proceeds of our recent fundraising dinner (\$200) will be donated to the Service. We have also asked GYS to think about practical ways in which the local community can be involved [see p9].



RE-ELECTION OF LEICHHARDT MAYOR

President Bruce Davis will be sending congratulatory letters to Máire Sheehan on her re-election as Mayor and to Jaimie Parker on his election as Deputy Mayor.

LEICHHARDT LODGE

This historic property in Leichhardt Street (next to Margaretta Cottage) was sold recently and we understand that the new owners plan to renovate the building and live there themselves. The property is not currently included on the Leichhardt Council Heritage Listing and President Bruce Davis has written to the Mayor in this regard.

We are aware of a number of discrepancies between the above List and the Heritage Council Register and will be working to resolve these.

GUEST SPEAKERS - see pp6-7


SUBSCRIPTION RENEWALS

The Committee has worked hard this financial year to implement good practice in the matter of subscription renewal follow-up.

The suggestion has been made on numerous occasions that the Society should adopt a billing system other than one where subscriptions universally fall due on 1 July each year. Suggestions include 12 months from the date of joining or a 1 Jan-31 Dec billing year. The current system is a requirement of the Society's Constitution and while it is possible to change the Constitution, the Committee has not been persuaded that there is sufficient justification for a change.

Notice Board

Passionate Themes in Music and Poetry

 The Friends of Benledi and Glebe Library invite members and friends to the world première of an performance by Jack Glatzer, acclaimed international violin virtuoso, whose playing the *SMH* called "... quite incredibly breathtaking ..."

Jack will explore analogies and relationships between music and poetry through examples of shared rhythm, form, imagery and expression. Among the featured poets will be e.e. cummings, William Carlos Williams, Coleridge, while composers will include Tartini, Telemann, Bartok and Albeniz.

Bookings: phone Allison on 9660. 7869 - cost \$20/\$15, includes a welcoming glass of champagne.

Friday 13 October at 8.00 pm



LOCAL ARTIST'S EXHIBITION

Glebe Society members and friends are invited to the opening of the 33rd Independent Exhibition of paintings and drawings by Society member and local artist,

John Ogburn, at the **Harrington Street Gallery, 7 Meagher St Chippendale.**

At 2pm John will give a short talk on his approach to painting during the year.

Gallery hours are 10am - 4pm Tuesday to Sunday.

Opening from 10 am, Sunday 15 October to 12 November



MORE ART EXHIBITIONS at the Glebe Library

Justin Parker

Oil and watercolour paintings, and drawings.

Opening on Wednesday 11 October 6.30pm. All invited.

Gold coin donation.

6 - 21 October

Angela Tay

Angela, a local artist, will be presenting drawings and paintings that vary from realistic to abstract, utilising the traditional Chinese painting medium of brush, ink, water and xuan paper or silk.

Official opening date not yet finalised, watch for news at the Library.

23 October - 17 November

AND a Halloween storytime

"Ghastly Ghosts and Whacko Witches". Suitable for school age children this event will involve film, craft and stories.

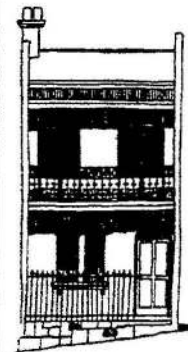
Thursday 26 October, at 4pm

HOUSE HISTORY SEMINAR

Do you want to know when your house was built? Do you want to find out more about the history of your house?

Come along to a House History Seminar at Glebe Library.

Cost - \$16.50 per person.



Bookings are essential.

Ring Margaret at Leichhardt Library on 9367. 9266 by Monday 2 October - at least ten people are needed to make the seminar viable.

**Wednesday
4 October 2000, 6-8pm**

GET INVOLVED IN THE COMMUNITY!

Volunteer cooks wanted

GYS

- with a good sense of humour -
two hours a week
see p8