

## in this issue:

- notice of Annual General Meeting, p1
- book now for annual dinner at 'Colors', p2
- Glebe Week 2000, p5
- [www.datadiction.com.au](http://www.datadiction.com.au), p6
- the Glebe Diggers' Memorial, p7
- have you renewed your subscription? p9

The GLEBE  
Box 100 PO



SOCIETY Inc  
Glebe 2037

POSTAGE  
PAID

The Librarian - Ms Margaret Whittaker  
Glebe Library  
Glebe Point Road  
Glebe NSW 2037

ID:214

... as from 1 July 2000 (including GST)

### MEMBERSHIP OF THE GLEBE SOCIETY INC.

Ordinary	\$40
Concession:	
Student/Pensioner	\$20
Institution	\$100

Write to Box 100 PO Glebe 2037 or phone the Secretary,  
Liz Simpson-Booker, on 9518.6186

If you have a matter that you would like to bring to discuss  
with the Management Committee, please ring the Secretary  
and arrange to come to a meeting.

### CARE FOR THE COMMUNITY

#### Report:

- dumped trolleys 1800 641. 497
- dumped litter 9560. 6169
- dumped cars 9367. 9222
- aircraft noise 9582. 1850

#### COPY DEADLINE for the next issue:

Wednesday 9 August

#### Please send to

PO Box 100 Glebe  
32 Lombard Street, or  
<bobbie@cga.com.au>



# Glebe Society Bulletin

6/2000 July/August 2000

LEICHHARDT MUNICIPAL LIBRARY  
L343503

For Reference

## FROM THE PRESIDENT

They say travel broadens the mind; it also can confirm existing views. Several weeks travel in Italy and Germany confirmed for me the economic value of heritage, and the dangers of over-exploiting the asset.

I have pleasant memories acquired during several off-season visits to Florence, but they were almost destroyed a couple of weeks ago when I wandered the city's streets for a few hours between trains. The number of tourists in summer overwhelms the city's marvellous heritage sites and diminishes them for all. For several months each year, Florence ceases to be a city and becomes a heritage theme park.

I also visited a small German town with many picturesque houses dating to the 16<sup>th</sup> and 17<sup>th</sup> centuries. The locals, with an eye to the main chance, are selling off their old houses to stockbrokers and investment bankers from Frankfurt who are renovating them as weekenders. The town's physical heritage is being preserved, but what will become of its way of life?

On the other hand, several Italian hill towns we visited demonstrate how ancient neighbourhoods and buildings can retain their historic character while being part of modern and thriving cities.

Of course nothing is perfect: despite access restrictions, traffic is mad and exacerbated by the angry din of two-stroke motor scooters. But towns like Orvieto, Perugia and Todi have shown some initiative in tackling the problem by building parking stations outside the city walls linked to the *centro storico* by escalators or funicular railway.

## Annual General Meeting

NOTICE IS HEREBY GIVEN that the Annual General Meeting of The Glebe Society Incorporated will be held at 2 pm on Sunday 27 August at Benledi, next to the Glebe Library at 186 Glebe Point Road.

The agenda and annual reports will be published in the next *Bulletin* which will be posted to members on 18 August. Copy deadline for this next issue is therefore Wednesday 9 August.

Office-bearers of the Society and other members of the Management Committee will be elected at the AGM.

A nomination form is enclosed and all forms must be returned by 20 August.

On conclusion of the formalities, everyone is invited to the traditional after-meeting drinks at our house (79 Ferry Road – only a short walk down the hill). Please note that the meeting will be held in the afternoon, starting at 2 pm, rather than in the morning as in previous years.

Bruce Davis

While these cities make quite a lot of money from their heritage through tourism, they are also vibrant, working towns, not urban museums like Venice.

While The Glebe Society supports various tourism initiatives capitalising on Glebe's built heritage and proximity to the city, let's ensure that Glebe remains an interesting and rewarding place to live.

Bruce Davis



# Traffic Matters



## FRANCIS STREET

The RTA has gone ahead, as it planned, and Francis Street was opened in early July for left hand turns both in and out of Glebe Point Road.

As anticipated in the last *Bulletin*, a small group (Roger Mackell and myself) met at very short notice with Phil Margison, from the RTA, in Sandra Nori's office on the evening of 27 June.

Representatives from South Sydney and Leichhardt Councils were unfortunately not able to attend.

We were still not able to pin the RTA down to specific measures of what would be regarded as 'success' or 'failure' in the trial. However, the RTA has identified the intersections which it will be monitoring, both for traffic counts and queues. This monitoring is to be carried out on Thursdays and Saturdays. The first counts were to be taken prior to the installation of

trial street furniture, specifically an island designed to force left-hand turns and prevent right-hand attempts. Later counts will be held in August, after the new system has been operating for about a month, with time to 'settle down', in October after the Olympics, and finally in December, in the lead up to Christmas. The overall trial is to be a six-month one.

Concurrently work is being done to modify the signal cycles at Bay Street, to improve traffic flow from the Broadway Shopping Centre carpark. The Centre is also making some internal modifications to the carpark to improve the exit flow. Further along Bay Street, a blister is to be installed at Wentworth Street to reinforce the no-left-hand turn ban there.

Sandra Nori's office agreed to our request to monitor air pollution

and has approached the EPA, asking them to measure pollution levels, particularly as regards Minogue Reserve. They will also ask the STA for feedback about any delays experienced by bus drivers along Glebe Point Road.

We were assured that Sandra has received a promise from Carl Scully, Minister for Transport, that if the results of the trial prove to be disadvantageous to the local community Francis Street will revert to the previous left-turn-in-only situation.

It is proposed that the same group meet in mid-August to discuss interim results of the trial.

## BUSES

The Editor's Desk last month noted the implementation of the new bus route No. 449 between Pyrmont/Ultimo and Broadway. Some readers will also have seen either the flyers distributed by the Port Jackson Branch of the Communist Party or the reports in the July *Village Voice* warning that bus services through Glebe are to be cut in order to increase patronage of the new Light Rail extension. We have been in contact with Sandra Nori's office in an endeavour to confirm (or refute) this allegation. Her office will advise us as soon as they have managed to clarify the situation with the Minister's officers.

We trust that this does prove to be a 'furphy', since the bus routes and the Light Rail routes serve different catchments, and the degree of patronage of the present bus services would hardly seem to warrant cutting or eliminating them. They must surely be profitable!

Jeanette Knox

# Inner West Light Rail

## CONSULTATIVE COMMITTEE MEETING - 20 JULY 2000

This was the last formal meeting of the community consultative committee for this project. It is intended to hold a follow up meeting, on the first or second Thursday of November in case any issues emerge after running the system. The timing of this meeting will allow time for the system to settle in and for the Olympic frivolities to subside. The date will be confirmed a few weeks prior to the meeting and advertised in the local press.

Numbers attending the meeting remain low at about 20, as the various concerns raised by the community are resolved.

## STATUS OF WORK:

Civil work is now essentially complete and ABB Engineering Construction are attending to minor matters such as paint and concrete chips that happened during construction. Some work continues on the government radio rebroadcasting system, which is part of the emergency system for the tunnel. The TV monitors at the stations will be installed over the next month. Some work is being carried out to complete landscaping at the Jubilee Park, Wentworth Park, and Lilyfield stations. ABB site sheds should be removed at the end of August.

The light rail is now operating all its services through to Catherine Street, Lilyfield, although no passengers are carried past Wentworth Park. This is to allow the drivers to get used to the new track and to allow staff familiarisation with the operating systems. It is also part of the safety testing process required by the licensing authorities.

Leichhardt Municipal Council is also attending to some matters on the streets adjacent to the Glebe and Rozelle Bay stations. In particular, the detail of set down areas and shelters is yet to be finalised and adjustment to the parking signs at the stations is also yet to be completed.

The only major outstanding matter is the boardwalk at the Jubilee Park station. Construction of this will involve disturbing a contaminated site and also poses a threat to Energy Australia's ageing 33 KV cables. The Consortium is still seeking a solution to this issue but it is unlikely that this will be completed by the scheduled opening date of 13 August.

Signage is up at the stations and the 'way finding' signs are to be erected around the adjacent streets over the

*continued on p4...*

## SOCIETY CELEBRATES THE HISTORIC OPENING - 15 JULY

On Saturday 15 July, 2000 almost 200 members and friends of The Glebe Society were guests of Metro Light Rail as they travelled on a specially rostered tram for a trip on the soon-to-be-opened Western extension of the line from Wentworth Park to Catherine Street, Lilyfield.

Two guests of the Society were included in the passenger list, namely Dr John Geroft (a former Society member) and Robert Young, who prepared a proposal over 20 years ago which detailed the conversion of part of the

Metropolitan Goods Line from its diminishing importance and usage as a freight line to one supporting a light rail commuter service for the inner western suburbs through which it passed. It was over that section of this line from Glebe Tunnel to the Catherine Street overbridge that the tram travelled. Present

members of Leichhardt Council, including the Mayor, Máire Sheehan and the previous incumbent, Chris Kruden also shared in the experience.

After the signing of indemnities, the tram left Glebe Station at 10.45 am and proceeded at 'touring speed' (20 kph) through the Glebe Tunnel to Jubilee Park, Rozelle Bay and the new terminus below the Catherine Street overbridge. At each station, most travellers disembarked to view the facilities.

The return journey was at 'line speed' (55kph) to the Jubilee Park station, where at least 140 passengers entered the 740 metre long Glebe tunnel for a walk below Glebe Point Road, back to Glebe Station. The day ended on time (12 noon) due in no small part to the professionalism and attention to detail of the running and marketing staff of Metro Light Rail. Some members then enjoyed lunch at the nearby Kauri Hotel. Some of the funds raised on the day will be allocated to the design and promotion of the THREE BRIDGES WALK [see *Bulletin* 3/2000 p7].

Passenger services on the new line will officially commence on Sunday, 13 August, 2000, and Metro Light Rail will take the opportunity to promote the service as widely as possible. My thanks go to all those involved in making the day such a success, and to Steve Stewart in particular, who initiated the original approach to M.L.R.

Philip Vergison

[The Society also acknowledges the many years of work promoting the light rail extension put in by Andrew Wood, Bruce Davis and the late John Hoddinott.]

## The Glebe Society's Annual Fund-raising Dinner

Our Annual Dinner is fast approaching...  
Join us at the end of Glebe Week in the cellars of

COLORS RESTAURANT

AT THE HISTORIC 'UNIVERSITY HALL'

2 GLEBE POINT ROAD

SUNDAY 13 AUGUST AT 6.00PM

\$35pp includes three courses, coffee, GST & corkage

Optional cash bar/house wines/BYO

Numbers limited

RSVP by 3 August to Cynthia Jones 9660. 2451

next month. Diagrams are available to show where these are to be located. They are the same dimensions as standard Council road signs but will be in the Consortium's distinctive two-tone blue colour scheme.

There are some trees to be planted to provide sight screening for residents of Pritchard Street. These should be in place by the end of August.

The sub-group of residents surrounding the Glebe stop has had most of its issues addressed although there is still some concern about light spill. The light for the pedestrian crossing will remain on during night hours and it was suggested that these lights could be dimmed if the rail is not operating. The Company will look in to this but it is unlikely that they will fully address the issue before the opening date. Some houses in this area have been fitted with window screens and latticework on fences. Lighting will be the subject of a further meeting with this group.

Trevor Townson from Department

of Transport outlined the Department's ongoing maintenance regime for the corridor. Under a complicated leasing arrangement with SRA, they are now the custodians of the corridor outside the immediate area required to operate the rail. He acknowledged that DoT are novices at this kind of activity. However they have a small budget available and he indicated that the standard of the corridor should gradually improve over the next two years. (By comparison SRA have essentially neglected the corridor for some time.) There is a plan being developed which includes gradual opening up of the viaduct arches adjacent to the Crescent and possible development of public space in the area between the Crescent and the viaduct. Alternatively this might be sold off. More immediately there are some fencing issues that will be resolved now.

#### PARKING:

The impact on parking continues to be a major concern for residents. Leichhardt Council has completed a before survey to ascertain the

demand for parking before the system commences. This survey shows that, during the day, parking is not a major problem in the areas around the stations except in the vicinity of the Glebe stop. Curiously, the survey stopped at 6:00 - 8:00 pm and is only representative of weekdays. I have concerns that the impact on evening and weekend parking will not be measured and have raised this with Council's officers. DoT is also undertaking to pursue this issue with Council. The report on Council's survey is being made available to the public on Council's web site <[www.mycommunity.com.au/leichhardt/](http://www.mycommunity.com.au/leichhardt/)>

Survey notwithstanding, in the event that a problem emerges, Council will approach residents prior to implementing a resident parking scheme. This appears to be the most likely panacea. It should be noted that ORTA is intending to implement a resident parking scheme in Glebe for the duration of the Olympics and this might be a good time for residents to develop their views about the acceptability of such a system. Other traffic issues can be raised with Sophie Handley at Council.

#### OTHER ISSUES:

Further down the track DoT will investigate the possibility of integrating bus services with the light rail. This is especially relevant for the 445 service.

The park at the bottom of Palmerston Avenue (Sarah Penington Reserve) remains closed to the public while Council digests the geotechnical assessment.

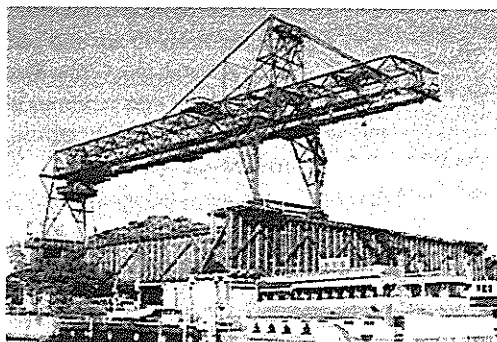
Leichhardt Council has assessed the provisions for disabled access and is satisfied that its criteria are met. These will be integrated within the wider disabled access plan.

The system is to open on Sunday 13 August and will involve an opening ceremony with various dignitaries and celebrations and entertainment in Jubilee Park.\*

Steve Stewart

\* see Notice Board

## The Coal Unloader on Blackwattle Bay



It appears that Sydney Waterways has let a contract for the removal of the gantry from the Blackwattle Bay coal (un)loader, which is in a state of serious deterioration.

Our Bays and Foreshores Convenor spoke to the lessee of that part of the waterfront, John Gittens, who said that the gantry, when removed, will be stored on site where we will be able to keep an eye on it. He is also hopeful that it will be stored in such a way that it can be resurrected. We understand that the removal will take place within the next two weeks.

The Society will be seeking confirmation, and an assurance that this isn't some clandestine destruction of the heritage-listed gantry.

Sydney Waterways are soon to forward the Bays Precinct Master Plan to Department of Urban Affairs and Planning. We look forward to receiving an advance copy. Once the Master Plan is approved there is an intention to let a contract for adaptive reuse of the item.

There will be a more detailed report in the next *Bulletin*.

## Glebe Week 2000

"what an amazing place!"

Friday 4 August to Sunday 13 August

As always, there are many events, including the Glebe Youth Service Film Night and BBQ, happenings at St. Helen's Community Centre, several talks by Max Solling, and our own annual dinner at Colors Restaurant (see p2).

There will, of course, be the (annual?) Pub Crawl covering eleven Glebe pubs conducted over two Saturdays by Gay Kalnins, secretary of the Glebe Chamber of Commerce.

In a piece published in an earlier *Bulletin*, Max Solling noted that in the early days of Glebe "the pub remained very much a masculine republic in a male-dominated society, [though] women were among the well-known licencees of Glebe pubs." As examples he listed the following:

Margaret Onan - VICTORIA INN, Bay Street,  
Elizabeth Saunders - CENTENNIAL HOTEL (later the Harold Park), Ross Street  
Margaret Smyth - THE BRITISH LION, St. Johns Rd. & Forest St.  
Annie Brennan - THE IMPERIAL, 106 Glebe Street  
Margaret and Kathleen Toohey - THE CURRENCY LASS, Glebe Rd. & Mitchell St.  
Anne Egerton - THE FOREST LODGE, Arundel & Forest Sts.  
Mary Gee and Kate Dinan - THE EXCELSIOR, 101 Bridge Road  
Mary Hanratty and Elizabeth O'Brien - THE GLEBE TAVERN, Greek St and Franklin Place  
Mrs. R. Mulholland - THE KAURI, 2 Bridge Road  
Mary Tye - THE KENTISH, 67 Broadway  
Mrs. A. Walters - THE SYDNEY, 35 Glebe Street\*



If you haven't received a detailed Glebe Week flyer in your letterbox copies will soon be available at the Glebe Library

\* A much longer piece by Max entitled 'The Pubs of Glebe' can be found in *Leichhardt Historical Journal*, No. 6, September 1975, copies of which are held in the Glebe Library.

## Tramsheds for Artists!

At the opening of the Glebe Art Show on 7 July, Mayor Máire Sheehan asked residents to support Leichhardt Council in its efforts to purchase and develop the Tramsheds into a major studio and gallery complex for the greater city of Sydney and NSW, as part of its cultural planning and development program. [See also *Bulletin* 5/2000, p4.]

Leichhardt Council has shown considerable vision and commitment - it is now time for the Ministry for the Arts, the NSW Premier's Department and the State Treasury to match that commitment and show some leadership to ensure the Tramshed proposal is supported by the Government.

The relevant government ministers to contact are:

The Hon. Sandra Nori, MP  
Minister for Tourism and Small Business  
Phone: (02) 9228 5055  
Fax: (02) 9228 4544

The Hon. R.J. Carr, MP.  
Premier and Minister for the Arts  
Phone: (02) 9228 5239 Fax: (02) 9228 3935  
[bob.carr@www.nsw.gov.au](mailto:bob.carr@www.nsw.gov.au)

The Hon. R.J. Debus, MP  
Minister assisting the Minister for the Arts  
Phone: (02) 9995 6500  
Fax: (02) 9281 1115

Local ALP Branches could also be contacted, and of course, our Mayor, Máire Sheehan and Councillors across the whole municipality - email to [leichhardt@lmc.nsw.gov.au](mailto:leichhardt@lmc.nsw.gov.au)

Chris Watson

<www.datadiction.com.au>



## LINCS: Community to Community

Leichhardt Council has collaborated with 14 other local Councils in the Sydney metropolitan area by participating in LINCS, an anagram for LOCAL INFORMATION NETWORK FOR COMMUNITY SERVICES.

LINCS is a database accessible via the Internet, providing information about services, activities, organisations and facilities in the member communities – already there are over 627 listings for Leichhardt Municipality alone, including The Glebe Society. Specifically included in this database are disability and health information services.

The 24-hour on-line service is continually updated (whenever information is provided) under the supervision of Council's Local Studies Librarian, Margaret Penson, who can be reached either by telephone on 9367. 9266 or email <leiclib@leichhardt.nsw.gov.au>.

LINCS is user-friendly and can be found at either <www.datadiction.com.au> or at Council's somewhat more cumbersome website

<www.mycommunity.com.au/leichhardt/index.html>; Internet access is free of charge at libraries in this municipality.

There are easy pull-down menus and subject headings, supported by many map sites so that services can easily be located. Those of us not completely comfortable with web-browsing can resort to the floppy-disc or hard-copy format (printed free of charge at local libraries), though of course these latter formats would require users to refresh their version regularly if they wish to remain up-to-date on community matters.

LINCS is the first co-operative, consistently indexed utility enabling councils to disperse information about their local services and facilities across a large geographic area.

Further information is available from Margaret Penson or from Data Diction, phone: 9499-3133; fax: 9499-3266; email: <support@datadiction.com.au>; web site: <http://www.datadiction.com.au>

Cynthia Jones

for example - A request for 'Law and Justice' nearest to 'Glebe' produces:

Search for: Law and Justice Nearest to: Glebe

Try Also: Abuse · Adoption · Appeals and Tribunals · Celebrants · Civil Liberties · Community Justice Centres · Complaints Procedures · Consumer Protection · Copyright · Divorce · Family Law · Guardianship · Human Rights · Justices of the Peace · Law Enforcement · Law Reform · Legal Aid · Legal Services · Mediation · Ombudsman · Organ Donation · Power of Attorney · Protective Commissioner · Reconciliation · Strata Titles · Tenancy · Trustees · Wills ·

and the first organisation listed is:

NSW Council for Civil Liberties

149 St. John's Road, Glebe NSW 2037

Postal Address: PO Box 201, Glebe NSW 2037

Phone: 02 9660 7582 Fax: 02 9566 4162 Email Web Site

Has a consultative role & also provides advice/referral for those who have suffered civil liberty violations by government or police. All complaints/submissions for comment by NSW CCL must be in writing. Office not open to public.

Area Served: State-wide Hours: M TU W 9-5; TH 9-noon Fees: N Contact: Executive Secretary

Disabled Access: No

Advocacy; Civil Liberties; Peak Body;

remember - Internet access is free of charge at libraries in this municipality.

## The Glebe Diggers' Memorial

"From bustling Glebe Point Rd the memorial looks like a decaying monument. The angel at the front had its head chopped off about 18 months ago by vandals and busts of a digger and a sailor on either side have been stolen. But inside the structure, a bronze nurse overlooks the names of the fighters just as she has every day since the anti-conscriptionist architect William Martin built it in 1921." *The Glebe*, 13 February 1991

The Diggers' Memorial in Foley Park is dedicated to the 174 citizens of Glebe area who died in The Great War. The foundation stone was laid by Lord Forster, the Governor-General in June 1921, who returned on Anzac Day 1922 to formally open the Memorial.

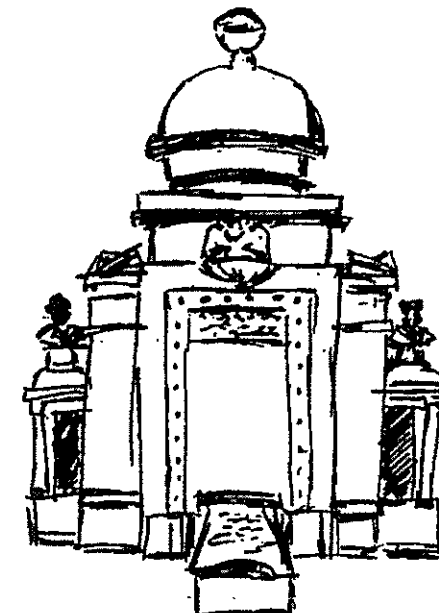
In 1991 The Glebe Society set up a sub-committee (Max Solling, Rev. Hugh Scott and Dr. Bill Nelson were members) to restore the Memorial. The restoration work was necessary firstly because it had deteriorated due to weathering of the sandstone and marble, and secondly because of acts of vandalism which had removed the busts of the Sailor and the Digger, smashed the top portion of the Angel, and covered in graffiti the interior marble name plates of those killed.

The National Trust of Australia (NSW) Glebe Diggers' Memorial Restoration Appeal was launched on 17 October 1992, by the Mayor of Leichhardt (Alderman Larry Hand).

Substantial donations were received from Leichhardt Municipal Council, The Glebe Society, the Glebe Chamber of Commerce, the Commonwealth Dept. of Veterans Affairs, the 55/53 Australian Infantry Battalion Association (the 'Mice of Moresby'), and the Leichhardt-Lilyfield RSL sub-Branch. Mrs Ann Disher of St. John's Village, whose husband served in World War I, also contributed significantly.

In 1994 Glebe marked Heritage Week with an Anzac Day dawn service at the partially restored memorial – the first held there in

living memory. *Bulletin* 4/94 reported: "A soft autumn mist hung around the red and white marble monument and shrouded the dark looming figs and the pale peak of St. Johns Church." A piper from the University Regiment played and the Regiment's Major M.J. Mitchell spoke. [His speech is published in full in *Bulletin* 5/94.]



"To leave the monument defaced is a continuing slight to the memory of these men and their families whom they left behind."

Stalwarts present at every memorial service held (at 7.30 am) on Anzac Day since 1994 are World War II diggers of the 55/53 Battalion who, after having breakfast in Glebe, go on to the march in the city. This year's service was conducted by the new rector of St. John's Bishopthorpe, Rev. Martin Hunnibunn.

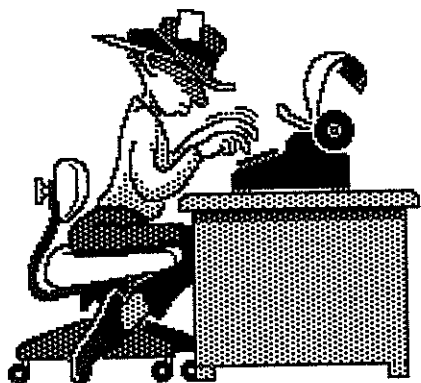
The total work undertaken included a painstaking search for original material to base the restoration soundly, the constant search for donors, appointment of restoration architects Brian McDonald (1<sup>st</sup> stage) and Craig Burton (2<sup>nd</sup> stage), and the commissioning of a restoration contractor, The Traditional Stonemasonry Co.Pty.Ltd., which held the mould of the Digger, the Sailor and the Angel.

Photographic likenesses of the missing and damaged items were obtained from the Archives of the Sydney City Council, and the NSW Department of Planning assisted with advice, encouragement and major financial support by way of two grants under the NSW Heritage Assistance Programme totalling \$19,800, without which the project could not have been undertaken. The balance of \$22,880 was contributed by the local community.

The restoration was completed in December 1997 at a total cost of \$42,680.

In 1999 the slouch hat of the Digger was damaged and Kris Krawczyk, a sculptor from The Traditional Stonemasonry Co.Pty.Ltd. has undertaken to do this work in August without any charge; he had hoped to do the work earlier but was unable to do so because of commitments at Sydney University.

[The above information was taken from reports written by Max Solling and Bill Nelson published in earlier issues of the *Bulletin*. Thanks to our Archivist, and Max, who has kindly brought the information up to date.]



## from the Editor's Desk

### HELP NEEDED!

Our Treasurer, Alan Hunt, is not standing for re-election at this year's AGM, and nominations for this position are needed.

Also, in an attempt to simplify the Society's administration, we are developing a database which covers both our membership details and records, and income and expenditure. While it is still at the testing stage, the omens so far are quite positive.

When we switch over from the present system we will also need someone with a computer who is willing to key in the necessary data on a regular basis. This will involve only a couple of hours work in most months, and will require no special computer skills.

Both these jobs are vital to the smooth running of the Society, so if you can help please contact Bruce Davis or Liz Simpson-Booker.

**FAREWELL**  
to Doreen  
Strachan,  
long time  
member, who  
passed away  
last month.

Our  
sympathies to  
Tony, Sue  
and the  
family.



## 2RPH RADIO FOR THE PRINT HANDICAPPED - GLEBE'S NEW RADIO STATION

One of Sydney's Special Purpose Community Radio Stations has moved to Glebe. The broadcaster is 2RPH - Radio for the Print Handicapped - which provides 24 hour a day service for the visually impaired and others who cannot read for themselves, such as people who cannot handle or understand printed material. It is of great benefit to hospital patients and residents of retirement complexes and nursing homes.

Each day of the year since 1983, 2RPH's volunteers have been reading all national and major Sydney metropolitan newspapers, plus the suburban press. The readings not only cover the news columns, but also include featured articles, background pieces, reviews, editorials and letters to the editor. Throughout each week programs are broadcast devoted to leading national and many international magazines. Other programs cover special interest topics such as computers, finance, the law, travel, health and music, and there are daily book readings, including publications for children.

To provide this continuous reading service requires the services of more than 200 unpaid volunteers. The station is operated by a non-profit co-operative and relies for its income from some government funding, membership subscriptions, donations, grants and sponsor announcements.

The custom-built complex for 2RPH has been built in the St. Helen's Community Centre, 184 Glebe Point Road. It contains one broadcasting and two recording studios, dubbing suite, production and volunteer facilities.

The new facilities will be officially opened by the station's patron, the Governor of NSW Mr. Gordon Samuels, on Saturday 19 August at 3pm. Tom Crozier, Station Manager, would like to extend an invitation through the *Bulletin* to the people of Glebe to attend the opening.

Grahame Bunyan



### SUNDAY 13TH AUGUST, 2000

For the first time in its 11-year history, Clean Up Australia is holding a second clean up on Sunday 13 August, across Sydney. This second clean up will target specific areas of Sydney which will be on show to the rest of the world during the Olympics, and it is important for all of us to lend a hand and clean up our local environments.

No sites have been registered for Glebe, but below are details for three sites in Rozelle and Pyrmont. The information below has come from Meredyth Stitt, the Sydney Coordinator for Clean Up Australia, phone: 9552. 6177 fax: 9552. 4468 email: <meredyth@cleanup.com.au>

**CRESCENT ST AND SURROUNDING STREETS - 0900 to 1700**

Meeting Point: 17 The Crescent, Rozelle

Phone: Susan Phillips 9818 3508 or 9818 3508

**PYRMONT/DARLING HARBOUR - 0900 to 1300**

Cross Streets: Pirrama Rd and Harris St, Pyrmont

Meeting Point: Pyrmont Point Park

Phone: Glenn Hoddy 8765 1960 or email <ghoddy@collex.com.au>

**PYRMONT BRIDGE RD - 1100 to 1200**

Meeting Point: 2, Units 9 and 10 Pyrmont Bridge Rd, Pyrmont

Phone: Liz Evans 8586 0109 or email <liz@esprit.com.au>

Information can also be obtained on 1800 024 890, and on website  
<www.cleanup.com.au>

### SUBSCRIPTION RENEWALS

This month your *Bulletin* label will indicate your current membership status with the Society.

If the label shows "June 2000", according to our records you have *not* yet renewed. A renewal form was enclosed with last month's *Bulletin* and we would be very glad if you would send your cheque or credit card details to PO Box 100, Glebe.

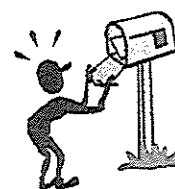
### NEW TOWN PLAN DELAYED

Leichhardt Council will have to re-exhibit its new Town Plan because changes that were made after the previous exhibition period make it vulnerable to legal challenge. While The Society is concerned about any further delay, it is clearly important that the document should stand up in court.

The re-exhibition period is from 26 July to 23 August, and submissions will be received until Friday 25 August.

### THE FORSYTH AUDITORIUM AT THE BROADWAY CENTRE

will be closed for Olympic fencing training from 26 August until 27 September. Additional temporary facilities will be built on the asphalted area of Minogue Reserve, and access to the site will be restricted for athletes' security.



Dear Editor,

### GRAFFITI! WHAT IS THE REAL ISSUE?

*Graffiti* (Macquarie English Dictionary 1999) words or drawings written on surfaces of walls, buildings, billboards, footpaths etc. derived from the Latin *graffio* a scratch and from the Greek *graphein*, mark, draw, write etc.

I believe it is common knowledge that graffiti is not a 21st century phenomenon and that it has always been part of the social fabric of most societies. It is a medium by which anyone can express themselves. It can be art, social commentary, political expression or vandalism. It is the latter which seems to cause the most emotive outpourings from people. If it is vandalism which concerns our community the most, perhaps we need to look for the cause, rather than patch up the problem. There is no doubt that vandalistic graffiti attracts more graffiti, however if we choose to live in a community, I believe we have a collective responsibility to remove such unwanted efforts in our public spaces. Not just look after our own property.

I don't think the debate is of much value about the issue of whether graffiti is art or not art, as each individual has a different opinion, appreciation and understanding of the meaning of 'art'. Given that graffiti is a form of social expression it is important then to give appropriate space and recognition to those people who wish to make their statements. Before people judge others, perhaps it might be useful to reflect on one's own life. Ask - Did I ever write/draw on a school desk? Deface library books? Carve initials on public trees?

Keith Haring, an American artist whose work is exhibited in the Museum of Modern Art in New York and has travelled the world, brought the importance of street art to the fore in the 1980s. He was responsible for empowering the move of art from gallery walls into the space of the community. His initial work started as subway art in New York. He drew on black panels on the trains. His social commentary was seen by thousands of commuters each week and the "power and potential" of his work became a reality.

Let us find the space for our Glebe artists to continue to explore their creativity, make their statements, satisfy their desire to be recognised, without judgement and condemnation, in designated public places.

Jan Wilson

## Notes from the Management Committee meeting held 12 July



### COUNCIL AMALGAMATIONS

The Management Committee noted that a South Sydney residents' group called 'Rejoin the City' was lobbying for the return of Kings Cross, Potts Point, Woolloomooloo, Darlinghurst and East Sydney to the City of Sydney (SMH 5 July 2000). The Minister for Local Government, Mr Woods, is yet to make a decision about a review of boundaries.

The point was made that an amalgamation between Leichhardt and South Sydney Councils would make more sense than a merger between either or both of the former with the City Council.

### FINANCIAL RECORDS

The new database system will permit more accurate budgeting through better differentiation of membership categories and allow more timely follow-up of renewals.

### MEMBERSHIP DRIVE

Over 200 membership application forms and Bulletins have been letterboxed over the last few weeks. This program will continue for the next 12 months in order to lift the profile and membership of the Society in the area. Our thanks to Cynthia Jones and Ian Edwards for assistance with this program.

As part of the membership initiative, the membership application form has been updated and expanded.

Society membership brochures are currently displayed in the Glebe Library, the Glebe Neighbourhood Centre and a number of real estate agents in the area. If you have any suggestions regarding other sites, please contact Liz Simpson-Booker on 9518. 6186.



# Notice Board

**Help Needed!**

← see page 8

## CHILDREN'S BOOK WEEK

21 - 26 August

- **Children's Book Week Competition**  
Entry forms available at Leichhardt, Balmain and Glebe Libraries.  
Entries close 14 August 2000  
There are three categories - for children aged:

0 - 6  
7 - 9  
10 - 13



- **Special Storytime**  
*The Edge of Tomorrow*  
Thursday 24 August at 4 pm

## The Sydney 2000 Teapot Show 28 July - 27 August

For a display of some of the most original and eccentric teapots you're ever likely to see!!!



The Inner City Clayworkers' Gallery  
Cnr St John's Road and Darghan St  
Open seven days from 10.30am - 6 pm  
Opening 6pm Friday 28 July

## FALLS PREVENTION RESEARCH PROJECT

This free programme runs for 7 sessions with a follow-up occupational therapy home visit.

Venues at Glebe, Waterloo and Balmain.

Transport is provided, if needed.

If you are elderly and interested in preventing falls ring Lindy Clemson for more details: 9351. 9272

## GLEBE WALKING TOUR

Maureen Fry will guide a walking tour of Glebe for the Friends of Benledi and Glebe Library, exploring the area north of Wigram Road, including part of the Toxteth Estate.

Devonshire Tea will be served afterwards at Benledi.

The walk will take  
1 1/2 - 2 hours.

Cost: \$12/10

For bookings, phone Ros  
Wheeler on 9660. 7430

**Sunday 13 August**

## LAUNCH OF THE INNER WEST LIGHT RAIL EXTENSION

Festivity and fun in  
Jubilee Park.

Market-style family day  
with 40+ stalls, local  
food, arts  
and crafts,



live bands  
and official opening by  
NSW Premier Bob Carr.

**Sunday 13 August 10 am**

**Internet access  
is free of charge  
at libraries in  
this municipality.**

## For Your Diary ...

Wednesday	26 July
Friday	28 July
Friday	4 August
Wednesday	9 August
Sunday	13 August
Sunday	13 August
Sunday	13 August
Sunday	13 August
Saturday	19 August
Monday	21 August
Sunday	27 August

### ADVANCE NOTICE

Sunday 3 September

New Town Plan to be re-exhibited until 25 August, see p9  
Opening of The Sydney 2000 Teapot Show,  
6pm at Inner City Clayworkers Gallery, see Notice Board  
Glebe Week to Sunday 13 August, see p5  
for full details see flyers in Glebe Library.  
Glebe Society Management Committee Meeting  
7.30 pm Toxteth Hotel Meeting Room. All welcome  
Launch of Inner West Light Rail Extension  
10am Jubilee Park, see Notice Board  
Walking Tour of Glebe and Devonshire Tea  
1.30 pm from Benledi, see Notice Board  
Clean Up Australia Day, see p8  
Glebe Society Annual Fundraising Dinner, see p2  
Official Opening Radio Station 2RPH, see p8  
Children's Book Week to 25 August  
3pm, St. Helen's Community Centre, see Notice Board  
Glebe Society Annual General Meeting  
2 pm at Benledi, 186 Glebe Point Road, see p1

FROGGs Olympic Landcare Glebe Planting Day  
Jubilee Oval, contact Roberta Johnston, 9552. 3248

## The Glebe Society Inc

### MANAGEMENT COMMITTEE

President	Bruce Davis	9660. 7873
Vice-President	Jennifer Reed Burns	9692. 9369
Immediate Past President	Russell Stewart	9660. 8324
Secretary	Liz Simpson-Booker	9518. 6186
Treasurer	Alan Hunt	9660. 2407
Committee Members:		
Andrew Craig	9566. 1746	Ian Edwards (bh) 9660. 3240
Cynthia Jones	9660. 2451	Ted McKeown 9660. 3917
	Marianne von Knobelsdorff	9692. 0916

### SUB-COMMITTEE CONVENORS

All convenors are *ex officio* members of the Management Committee

BAYS AND FORESHORES	Collin Hills	9660. 8608
ENVIRONMENT	Winsome Byrne	9552. 2278
- including Noise Pollution	Andrew Craig	9566. 1746
FROGGs	Roberta Johnston	9552. 3248
PLANNING	Neil Macindoe	9660. 0208
TRANSPORT AND TRAFFIC	Jeanette Knox	9660. 7781
- including Light Rail	Steve Stewart	9660. 5845

### PROJECT TEAMS

Centenary of Federation	Liz Simpson-Booker	9518. 6186
Clean Up Glebe	Jennifer Reed Burns	9692. 9369
Conserving Glebe Heritage	Jan Wilson	9660. 2698
Foreshore Walk and Cycle Way	Judy Vergison	9692. 9200
New Initiatives	Ilze Frank	9571. 8495

### CONTACTS

Archivist	Lyn Milton	9660. 7930
Historian	Max Solling	9660. 1160
Membership List	John Sleeman	9692. 9507
Bulletin Editor	Bobbie Burke	9692. 0343
Assistant Editor		
and New Members Contact	Cynthia Jones	9660. 2451

We are glad to publish  
letters or articles:

on any matters of  
interest to Glebe

on any topic raised  
in the *Bulletin*, or

on any issues  
relating to The  
Glebe Society.

All correspondence should  
be addressed to:

The Glebe Society Inc  
Box 100 PO  
Glebe 2037

### DISCLAIMER

Views expressed in this  
Bulletin are not  
necessarily those of  
The Glebe Society Inc.