

in this issue:

- The City Council eyes Glebe, p1
- The battle for Francis and Glebe Streets, p2
- Clean up Australia - **Clean up Glebe** p3
- "Our Sporting Heritage" the Glebe programme, p8
- Glebe's Son - Edmund Barton, p9
- St Helen's Community Centre on Glebe Point Road, p10

The GLEBE
Box 100 PO



SOCIETY Inc
Glebe 2037

POSTAGE
PAID

The Librarian - Ms Margaret Whittaker
Glebe Library
Glebe Point Road
Glebe NSW 2037

MEMBERSHIP OF THE GLEBE SOCIETY INC.

Ordinary	\$30
Concession:	
Student/Pensioner	\$15
Institution	\$30

Write to Box 100 PO Glebe 2037
or phone Liz Simpson-Booker on 9518.6186

If you have a matter that you would like to bring to discuss with the Management Committee, please ring the Secretary, Liz Simpson-Booker on 9518. 6186, and arrange to come to a meeting.

DEADLINE

Copy for the next issue of
the Bulletin is

**Tuesday
14 March**

Please send to

PO Box 100 Glebe,
152 Bridge Glebe 2037, or
cynthiajones@ozemail.com.au



Society Bulletin

1/2000 February/March

Glebe

LEICHHARDT MUNICIPAL LIBRARY



L343486

For Reference

Not to be taken

eyes Glebe

The City Council

The Lord Mayor of Sydney, Cr Frank Sartor, has begun a campaign to amalgamate several inner city areas with the City Council. In particular he has targeted the Glebe ward of Leichhardt Council. The following information from stories in the *Sydney Morning Herald* between 15-17 February is republished below to inform members of what is in the wind.

Cr Sartor promised that if the City Council gained control of Glebe it would remove greyhound racing from Wentworth Park and restore it as a public park.

Not surprisingly, the mayors of the councils concerned, including Leichhardt's Maire Sheehan, have condemned Cr Sartor's move. The Minister for Local Government said

We invite members to send us their comments so that the Management Committee can prepare a statement which the Society will send to both Leichhardt Council and the City Council.

Cr Sartor envisages only six or eight councils in greater Sydney, with the City Council taking in the current municipalities of South Sydney, Woollahra, Waverley, Botany and parts of Leichhardt. He believes the current boundaries of the City of Sydney "gerrymandered by the Greiner Liberal Government in 1988", are artificial and inappropriate. Glebe, he says, "belongs with the city".

The City Council is polling residents in "various suburbs" to gauge their views on amalgamations and reviewing the implications of bringing suburbs such as Kings Cross, Woolloomooloo, East Sydney and Darlinghurst under Sydney City Council control. Cr Sartor claims the polls were initiated in response to strong resident submissions seeking a realignment of the City of Sydney's boundaries "because residents want the higher level of servicing and facilities the city can offer".

The Lord Mayor is quoted as saying: "The truth is that councils like Leichhardt are struggling financially, and we actually can often help those communities enormously."

The following day he said: "The critical issue here is what is in the best interests of the people and who would serve them best."

the proposal will not be examined until after the current round of voluntary council amalgamations is completed later this year.

As Cr Sartor points out, the views of local residents are important. We invite members to send us their comments so that the Management Committee can prepare a statement which the Society will send to both Leichhardt Council and the City Council.

mail: PO Box 100, Glebe

fax: Bruce Davis 9518. 9775

email:

<brucedavis@onaustralia.com.au>

Bruce Davis

LET'S HAVE YOUR EMAIL ADDRESS

Repeating our earlier request for your email address to include on a mailing list we are compiling for the purpose of getting information out quickly (e.g. our Clean Up Australia Day undertaking) and to canvass members' views on relevant matters (e.g. the proposed City Council take-over). We will ensure your address does not appear on group messages.

Please send to:

<brucedavis@onaustralia.com.au>

Hands off our streets!

THE BATTLE FOR FRANCIS AND GLEBE STREETS

There was drama aplenty on Glebe Point Road the week before Christmas when the Walker Corporation, owner of the Broadway Shopping Centre in the old Grace Brothers buildings on Broadway, played cowboy developer. In the time proven manner of Sydney developers, Walker Corporation tried on their own bat to remove barricades in Francis and Glebe Streets put there by Leichhardt Council 20 months ago – after extensive community consultation and traffic studies – to protect local streets around the Broadway Centre from the traffic that this massive development generates.

They tried first on Friday 17 December in the mid-afternoon while Leichhardt Council staff were at their Christmas party. Local business people, their customers and Glebe residents had to sit on the barricades at Francis Street to stop the Corporation's truck craning them up and taking them away. Again in time proven manner Glebe police threatened to arrest the protestors, taking the developer's side. Eventually when a furious Leichhardt Mayor and Traffic Officer arrived there was a verbal deal done. Nothing would happen until Leichhardt Council had been consulted! So we broke up.

But the next morning Walker Corporation was at it again! In a well organized dawn raid,

commanded by their senior traffic consultant Ross Nettle, they had taken away Council's traffic signs in Francis Street and brought in new ones. A truck from Blacktown City Council was busy marking the new lanes on Leichhardt Council's street at 7.30 am when local business people and residents started to arrive. But they were only just starting to remove the barricades. They got one onto the truck despite my protests, but I sat on the next one and said I wanted to speak to the police and the Council. The same police as on

Friday afternoon turned up promptly, but had no memory of the previous evening's deal. They said they would have to arrest us if we didn't move as they had received a fax from the RTA authorising the work. Unfortunately they couldn't show it to us as it was locked up at the station(?).

We had grown to three by then (David Gaunt, Neil Macindoe and myself) and when we refused to move, they tried to arrest us, but we won the ensuing scuffle as we were three (solid enough!) and they were two. They went for reinforcements, so did we, and by the time they were six or seven we were twenty or thirty. Again residents and locals, and Glebe Society people, responded with alacrity to protect their suburb.

The Mayor, Maire Sheehan, arrived quickly, but police wouldn't listen to her, the sergeant in charge was going to arrest us all, using further force if necessary. We contacted our local MP, Sandra Nori, and she intervened with a few pertinent phone calls – to whom we don't know. The result was that after a long stand-off the police went away and Walker Corporation gave up, the barricades stayed in place, until further consultation with Council! This time it was put in writing by the RTA.

Walker Corporation tried on their own bat to remove barricades in Francis and Glebe Streets put there by Leichhardt Council 20 months ago ...

We were told that at a meeting between the Council, Walker Corporation and the RTA on 23 December, the RTA disapproved of the developer's behaviour and opened a new process over the matter. Meanwhile there are serious questions of legality to be asked about the behaviour of Walker Corporation, and whether they were acting in collusion with the RTA or not.

Locals who shop at the development should consider whether they wish to continue to do so, as Walker

Corporation, while outwardly smiling and saying it wants to be a good local citizen has, on the matter of Francis and Glebe Streets (where the collective community view has been strongly in support of Council's protective traffic measures) refused to take on board local feelings and has continued over three years of consultation to bully and intimidate to get its way.

We have won a fragile tactical victory. But Glebe Point Road, Minogue Reserve and the whole residential area around Glebe Street are still at risk. Please help us win the next round by writing or faxing to:

Minister for Roads
Carl Scully MP
Parliament House
Sydney 2000
fax: 9228 4633

Member for Port Jackson
Sandra Nori MP
Parliament House
Sydney 2000
fax: 9228 4544

A petition in both Gleebooks shops collected some 400 signatures (of Glebe residents only) and was sent to the Minister for Roads; the only response to date was a letter dated 31 January advising that the RTA, Walker Corporation and Leichhardt Council are discussing the matter "with a view to reaching a suitable resolution by February 2000." To date we have heard no more, and were not encouraged by the last

paragraph of the Minister's letter which said that the Glebe community "will be given an

opportunity for community input at an appropriate time."

Roger Mackell

[The crunch may come at the Council's Traffic Committee meeting attended by the RTA on 25 February (too late for this *Bulletin*); discussion at the last Management Committee meeting included the suggestion that copies of letters to the MPs on this matter should be sent to the RTA. Ed.]

A Report from the Project Team to Clean Up Glebe

This year CLEAN UP AUSTRALIA DAY is Sunday 5th March and The Glebe Society would like to encourage all residents to help rid our suburb of litter. The Society has registered a site in Pyrmont Bridge Rd, near the corner of Talfourd Lane. Its members and volunteers will be tackling the surrounding streets and back lanes from 10am - 2pm. For more information contact the site convenor, Jenna Reed Burns on 9692. 9369.

Two other sites have been earmarked for Glebe: Minogue Reserve, cnr Francis St and Glebe Point Rd, and Bicentennial Park at the end of Glebe Point Rd. For more information, please contact either Clean Up Australia on 1800 024 890 or the site convenors for these areas — Cyrus Brooks, ph 9692. 3308 (for Minogue Reserve); and John Handley, ph 9338. 6760 (for Bicentennial Park).

Volunteers can turn up to any of the three sites on the day and fill in a registration form, then grab a bag and fill it with rubbish. Only a limited number of gloves will be available on the day, so please bring a pair with you. You should also wear a pair of sturdy shoes, slap on some sunscreen and wear a hat.

The Clean Up Glebe Project Team would like to encourage all residents to make an ongoing effort to keep our suburb clean. If residents actively looked after their street front, back lane and local park, and reported dumped rubbish to the Waste Service Inspector (Ian McCann, 9560 .6169; 0408 112 036), the impact on the suburb would be enormous. Research shows that people are less likely to litter or graffiti places which are kept clean, than those where litter and graffiti have been allowed to accumulate.

In other litter-related news, late last year the committee wrote to both Pioneer Concrete and the Sydney Fish Market asking both organisations to clean up their street frontages on Pyrmont Bridge Rd. Because of Christmas holidays, things

have moved slowly, however the planter box which runs along the street frontage of the Pioneer site has now been completely replanted and mulched - a great improvement.

The Sydney Fishmarketing Authority has not been as motivated regarding the small strip of wasteland which runs along Pyrmont Bridge Rd between the main entrance to their property and the disused coal loader. The area, bounded by a rusting cyclone mesh fence on one side and the water on the other, remains an eyesore, and is home to several large castor oil trees and accumulated rubbish. Although the effort to improve it would not be great (and would impact positively on the Fish Market by beautifying its main entrance), no action has yet been taken because of disputed ownership.

According to the Fish Markets, the land is not theirs, but could be owned by Sydney City Council or Sydney Water. In either case, Fish Market staff claim that they are unable to touch it. The Glebe Society has left messages with both the City Council and Sydney Water and is waiting for their responses. Meanwhile, Hurstville Council has recently responded to our inquiry regarding its very prominent anti-littering signs. This council has taken a very firm

stand against littering, with the employment of two local government law enforcement officers who target littering and other minor offences, and work closely with local police. Eight large signs featuring the anti-littering message STOW IT, DON'T THROW IT and information regarding on-the-spot fines were recently erected at the entrances to the council area.

In August of last year when the Clean Up Glebe Project Team met with Leichhardt Council officers, they asked if anti-littering signs could be erected throughout our suburb. The suggestion was met with positively, but since then the issue of cost appears to have prevented any signs being made or erected. In the next few weeks the Team intends to meet with the local Chamber of Commerce, and will again raise the matter of the signs, along with other measures aimed at reducing the amount of litter which is dumped in Glebe. This will include asking all real estate agents in the area to fully inform new residents and tenants of the correct way to dispose of rubbish, and shopkeepers to be responsible for the litter that their businesses generate.

Jenna Reed Burns



SUNDAY 5 MARCH

Clean up  Day

The Glebe Society has registered a site in Pyrmont Bridge Road, near the corner of Talfourd Lane, and will be tackling the surrounding streets and back lanes from 10am until 2pm.

VOLUNTEERS NEEDED

For more information contact the site convenor, Jenna Reed Burns on 9692 9369

The Early Battle for Glebe

A foundation member of The Glebe Society reflects on the early days

The Inner West was not a hot item in the first years of the Glebe Society. The State Government was determined to restart a policy of 'slum clearance' that was interrupted by the war. The inner city waterfront was to be given over to massive port development that was to be served by an extensive system of expressways radiating from the centre. Mementos of our embarrassing convict past (for example 'The Rocks') were to be obliterated and we were to become a modern 20th century city (maybe even get our own Olympics™ one day).

When The Glebe Society started there were few allies to be found in local, State or Federal politics. The press readily applied the labels of 'Commies', 'Reds' and 'Rent-a-crowd' to resident action. The *Open Road* magazine (NRMA) accused those opposed to inner city expressways as "...having blood on their hands". Many residents expressed the view that "you can't stop progress, you know" while having their own lives shattered by forced eviction, or their local environment rendered uninhabitable.

The very existence of Glebe was under threat. We were shown a proposal for the complete demolition of the churchland (half of Glebe) and the area to be given over to a combination of light-industrial, commercial and high-rise residential use. There were two expressways under way. The North-Western was small compared to the Western Expressway which was to come through Glebe from the side of Grace Bros and up Glebe Point Road. Container depots, cement silos and other ship-to-truck related industries were setting up because the North-Western Expressway was going to enable the removal of the old Glebe Island Bridge and allow lots of heavy shipping into Blackwattle Bay.

While these proposals were going ahead Glebe was being glutted with the worst type of three storey walk-up unit development, anything then being considered better than the 'slums' they replaced. I think the underlying feeling in The Glebe Society was that the juggernaut was just too big to stop. This did not stop many letters being written and requests that the damage be minimised (that the North-Western be tunnelled under the Toxteth Estate rather than open cut).

Our little house in Cardigan Street suddenly came into the path of one of the expressways which was diverted to miss a proposed grandstand at the Wentworth Park dog track. We began to experience the tactics of the DMR of emptying houses and smashing the roof tiles and toilets (to prevent squatting) or removing the odd house in the middle of a terrace to make the adjoining houses dangerous. I saw two elderly people die from worry about what was going to happen to them. The shelled

houses and empty sites were becoming rubbish dumps and beset with vandal-lit fires and rats became a problem. We felt we were in a war zone.

The Glebe Society had on hand members who were town planners, architects, economists and from other disciplines that could be called upon to analyse what was going on. It also had a very healthy membership helped by the fact that it was involved in many local activities and was not just a resident action group.

Because the majority of members lived in the Toxteth Estate (area around Toxteth Rd), some of us (in the war zone) felt that too much effort was being put into flower shows and morning teas while the rest of Glebe was crumbling. As it turned out it was the diversity of the Society that allowed for a much larger involvement of the community than if we were just a bunch of dedicated protestors. The *Bulletin* allowed us to communicate ideas (I used to imagine that the *Bulletin* writers and deliverers were the true core of the Society). We were winning allies but losing the battle.

One problem was that gentle folk do not find it easy to march in a demonstration or lie in front of a bulldozer or do things that might jeopardise their jobs, land them in jail, bring ridicule upon them or even physically cause them harm. But more radical action was the only remaining avenue.

There was at the time a rising tide of consciousness about what we were doing to our cities. The Whitlam Government had come into power and Neville Wran was standing in the wings in New South Wales.

The Glebe Society, with Kate and Bernard Smith at the front, marched several times through Glebe and finally, in Fig Street Ultimo, sat down in front of the

bulldozers to successfully halt the construction of the North-Western Expressway.

The battles for Glebe were really a holding pattern till the rationale for the old design for Sydney was realised as being futile. Container shipping and heavy industry have been moving away from the centre. A larger Glebe Island bridge has been built instead of the North-Western (which was planned to make a destructive loop through Glebe, Annandale and Lilyfield and join onto Victoria Road at White Bay, just so large ships could get into Blackwattle Bay). The Rocks, rather than being the shame of Sydney, is now a major tourist attraction. The 'slums' of Sydney have become desirable places to live (probably too desirable). We still make mistakes with road building (as in East Sydney) but we are more conscious of the effects of giving too much to moving cars.

Albert Mispel

The Glebe Society Bulletin

NEW INITIATIVES PROJECT TEAM FORMED



Something I couldn't help noticing at our 30th birthday Christmas party at *Lyndhurst* was the age of the original members who spoke to us – not much older than me, and in one case much younger!

This tells me two things:

- the Glebe Society was founded by young people, and
- as the Society has aged, so has its membership.

There is nothing surprising about this, and it's not the end of the world. As the melee in Francis Street late last year demonstrated [see p2], there are plenty of members ready to take to the barricades when necessary. Nevertheless, now we are '30-something', there is a danger that the

From the President

Society might lose touch with the age group which provided many of its founding members.

One of the issues which we discussed during our strategic planning process was the need for the Society to reach out to other groups. While we have links with Leichhardt Council, the Chamber of Commerce and other associations, and the *Bulletin* is widely distributed throughout Glebe, there are many individuals who don't have the opportunity to interact with us under our current program of activities, or don't want to know about us because of perceived socio-economic differences. Others say we are irrelevant to their personal ambitions and the modern world.

If these perceptions are wrong (and I believe they are), it is up to us to demonstrate that the Society is actively involved in issues which affect everyone in Glebe, whether they live on the Point or on the Estate; whether they are '30-something' or somewhat more mature.

To widen the Society's influence and membership, the Management Committee decided at its first meeting for the year to establish a New Initiatives Project Team which will be led by one of our newer members (and a newcomer to Glebe), Ilze Frank.

The aim is to develop new activities and campaigns which will encourage more people to take an interest in our work and eventually become members.

The project team's task is to think 'outside the box' and bring forward some original proposals for consideration by the Management Committee. Ideas which have been kicked around already range from a heritage pub crawl to a Glebe Society Web site, and a campaign to establish a new home for artists in Glebe when Blackwattle Studios close.

While Glebe is not in crisis as it was in 1969, there are some black clouds on the horizon, such as the City Council's bid to absorb Glebe [see p1].

If we hope to be half as successful as Bernard Smith and the founding members of the Society in preserving and improving the quality of life in Glebe, we need to broaden our membership base and grow our numbers.

I hope that in the new millennium, the Society will not only reinforce its role as a guardian of the environment, but also emerge as dynamic leader in Glebe affairs – a source of new ideas with the 'clout' necessary to get our ideas implemented.

Bruce Davis

Neighbourhood action at the blunt end of Glebe

Neighbours living around The Broadway Centre got together recently to help improve the local streets. Council has already greatly improved the lighting in Franklyn Street and the landscaping, and is investigating introduction of an alcohol-free zone in Minogue Reserve and surrounding streets.

Council has also been greatly supportive of the residents, the Glebe Point Road Streetscape Committee and the Chamber's resolutions in the ongoing battle to keep Francis Street one way [see p2] and to maintain the traffic barricades in Glebe Street. Council proposes a permanent closure of Glebe St with landscaping allowing for emergency vehicle access. Have you seen kids playing handball around the street barricades in the new, quieter Glebe Street and the cricket matches in Cowper Street? Our streets are now being used as they should be!

Residents are approaching Council about the ongoing 24-hour noise from our neighbour, The Broadway Centre. The Centre's rooftop fans and chillers for air conditioning, including the Hoyts, Bi-Lo and other mechanical plant, are all now powering away; full bore, battling the summer heat for the benefit of shoppers and cinema goers. This is all happening well outside Environment Protection Authority guidelines and at the expense of residents' sleep and lifestyles.

Working bees for a cleanup, replanting of some kerb growth and removal of graffiti are also all part of the plan, which is the project of an informal group of residents, community representatives, business people and agency representatives working to improve the local amenity.

**WATCH OUT FOR STREET BARBEQUES –
THE INAUGURAL ONE MAY BE ON
CLEAN UP AUSTRALIA DAY SUNDAY 5 MARCH!**

Andrew Craig

An Interpretative Walk at Tranby College Glebe



At a ceremony held during an Open House Day on 20 November last year, Tranby Aboriginal College launched an Interpretative Walk in the College grounds at 13 Mansfield Street, Glebe. The Walk was sponsored by The Australia Foundation for Culture and Humanities and consists of stone and marble tablets arranged in the courtyard containing historical information on the Glebe area, home of the Cadigal ancestors, and Tranby. The event was opened by Kevin Tory, Tranby Chairman; Community Elder Auntie Sylvia Scott, who works at grass roots level in Redfern and Waterloo (and has been on Tranby's Management Committee for four years) welcomed the guests and said that she knew the "ancestors were watching". Julie Cracknell (architect of the new buildings) spoke the words of Executive Adviser Kevin Cook, who was too

ill to attend, and Jack Beetson, Tranby's Executive Director, in officially launching the Walk, acknowledged "the enormous role Tranby has played in the Aboriginal history of this country".

Jeremy Wright, representing the Australia Foundation, applauded the achievements at Tranby over its 40 year history and told guests about the Foundation's recent work to raise corporate funds for indigenous projects. While the Foundation is no longer dispensing Government funding, it is successfully encouraging commitments from business, such as:

QANTAS – supports the Bangarra Dance Theatre, especially with their overseas travel.

RIO TINTO – supports the Australian Indigenous Cultural Network in their collaboration with the Pitjantjatjara Council to develop a Model Digital Archiving Program. This will assist communities to electronically record their cultural heritage materials using an innovative multimedia database as a model that could apply around Australia.

DELOITTE TOUCHE TOHMATSU – also supports the Australian Indigenous Cultural Network to expand their work from the model developed with the Pitjantjatjara Council to a feasible program that up to 50 Australian communities can access and use. Deloitte are proposing a national mentoring program to assist the communities' use of information technology to archive and access their culture and history.

THE DEPARTMENT OF IMMIGRATION AND MULTICULTURAL AFFAIRS – sponsors the Koorie Heritage Trust to establish a permanent exhibition of Aboriginal artifacts and cultural items in the centre of Melbourne. This project will contribute to the Department's 'Living in Harmony' program encouraging multicultural harmony throughout Australia.

Jeremy said that the Foundation will continue its active involvement in Tranby; it will also continue to encourage the welcome and growing interest the corporate world is showing in indigenous activities. (More information can be found at their website www.afch.org.au)

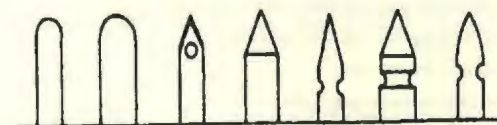
Readers may not know that individuals can be involved in the work of the College by joining the **FRIENDS OF TRANBY** – information is on the membership form enclosed with this *Bulletin*.

Tranby was recently the subject of an article entitled 'Continuity, conservation and contemporary values' in the National Trust Quarterly magazine *Reflections*, October 1999-January 2000 (which we may feature in a future issue). If you would like to see the Interpretative Walk and the new buildings, just phone the Programme Director, Yvonne Jackson. Visitors are always welcome at Tranby.

Bobbie Burke

The Glebe Society Bulletin

The Changing Face of Glebe



Variety of design in pickets and poles

COMMUNITY INTEREST PARAMOUNT IN HAROLD PARK DEVELOPMENT

"Community interest rather than the maximisation of financial returns to the Harness Racing Club", must be the guiding principle for assessment of the present proposals for redevelopment

of Harold Park, according to a community submission to Council.

The Glebe Society helped to draft the submission which was prepared following a public meeting arranged by local MP, Sandra Nori, at the Glebe Town Hall late last year. The preamble to the submission states:

"While residents of Glebe and Annandale accept that the paceway is a facility of State-wide significance, this is no excuse for the disregard of local interests which has characterised relationships between the club and the community in the past. Understandings reached with the club at the time of the last major upgrading of facilities have not been honoured, and in particular the matter of the hockey club is yet to be resolved. Despite an undertaking to become involved in discussions with the community, the club has failed to do so.

"The rationale for the current proposal is clear from the club's 1999 annual report in which the chairman writes: 'Realising that the club is situated on very valuable property at Harold Park, it was necessary to maximise the financial return of this asset and the club sought other ventures which could provide the club premium financial return'. The core function of this site is the conduct of trotting and pacing meetings for the enjoyment of the public. This proposal dramatically changes the profile of this facility to the detriment of the local community.

"As with many property development proposals, the desire to maximise profit puts the developer at odds with

the public interest. In this case the situation is exacerbated by the fact that the proposal impacts on a heritage building and will result in the permanent alienation of land until recently under the direct control of the State Government.

"We reject the plans as an attempt by a small group to maximise financial gain at the expense of the local community."

The submission also includes detailed comment on many aspects of the proposal, including traffic, parking, noise, the conversion of the old tramsheds to a health club, and the proposal for a hotel and new stables on the site. Neil Macindoe has also made a submission to Council on behalf of the Society.

NEW PLANS FOR BELLEVUE

Leichhardt Council has asked the Society to support a bid for Commonwealth funds to restore Bellevue, the historic house in Blackwattle Bay Park which has been derelict for years. The Council hopes it may obtain a grant which will enable Bellevue to be developed for community use, including a gallery for local artists and a café. The Society will be offered a room for its archives if the bid is successful.

The Council had hoped that Bellevue might be restored using private money, but this plan has fallen through. While the current option is unlikely to see the house redeveloped to its former glory [see *Bulletin* 2/99, p8] it is a great improvement on the present impasse.

I told Bruce Lay, Council's Heritage Architect, that we would be concerned about any plan which would generate significant additional traffic in Leichhardt Street. Bruce said he did not expect traffic would be a problem as the facilities proposed were for local people and he anticipated most would walk to Bellevue.

Bruce Davis

LAUNCH FOR PUBLIC ART PROGRAM

The three completed components of the Glebe Public Art program were officially launched on Saturday 13 February by the Mayor Mairé Sheehan. The art works were the **TILE PROJECT**, with handmade tiles from community workshops by artist Bronwyn Kemp on the Post Office corner, the **CAST BRONZE AND JARRAH SEATS** along Glebe Point Road by Eveleigh workshop artists Wendy and Guido Gouverneur, and the **BOXING GLOVES** in front of Gleebooks, by artist Ian Lisser Sproule.

A small crowd of well wishers came together and walked Glebe Point Road followed by a pleasant morning tea at Darling Mills – complete with local musician Claude Woodward and his baby Baby Grand.

Other news includes the announcement by our local MP Sandra Nori, Minister for Tourism, of Stage 2 funding for Leichhardt Council's Tourism Strategy. Stage 2 money will help promote the heritage and cultural character of Glebe to visitors, and will be accompanied by photographs taken during Stage 1.

THE LEICHHARDT TOWN PLAN

Although there has been a lot of publicity about the proposed new Leichhardt Town Plan, it would not have a major impact on Glebe. Only one major development site remains – Fletchers, and this is delayed by complex land swaps. The Town Plan is directed mainly at the suburb of Leichhardt, where lots are relatively large and can be combined for multi-dwelling development. There are some large lots in Glebe, mainly in the strip between St Johns Road and Wigram Lane, and these need to be watched: but most are relatively small. Of course, preserving Leichhardt is still a worthy cause, and The Society has a long tradition of supporting its friends and neighbours, so it is still worth a fight.

At this stage, the Town Plan appears to have been signed off by the Department, and now requires the Minister's approval only. However, the part that would be most helpful to Glebe is the one they are thinking of dropping: the restriction on expansion of private dwellings.

The battle to reform the Land and Environment Court would also benefit Glebe. Many good decisions of Council have been overturned on appeal, and Council sometimes decides not to fight proposals with little merit because of the Court's lack of support.

The current range of applications is a severe test for the new Council. We should not hesitate to provide guidance.

Neil Macindoe

February/March 2000

"Our Sporting Heritage" 1 - 9 April

With seven events, Glebe is well represented in the National Trust's Heritage Festival 2000 Programme (and four of those events feature local historian, AFL supporter and undefeated boxer, Max Solling). Things are planned in NSW from Aberglasslyn to Woodford, featuring Australian sporting heroes, venues and achievements.
The full programme can be found on <www.nsw.nationaltrust.org.au>

SATURDAY 1 APRIL from 2 - 4 pm GLEBE'S SPORTING STARS WALKING TOUR

Meeting at the Bronze Boxing Gloves, outside Gleebooks, 49 Glebe Point Road.
Max Solling will guide you through the suburb of sporting stars. Discover their identities, their sporting achievements, where they lived and played.
Arranged by the Glebe Chamber of Commerce.
Cost: \$5 - light refreshments at the end of the tour.
Phone: 9522. 1546

SUNDAY 2 APRIL at 10 am GLEBE'S SPORTING HISTORY WALK

Meet at cnr. Glebe Point Road and Wigram Road
The Glebe we know is changing. Discover the remarkable waterside suburb and its sporting heritage with Max Solling. Learn how boxing, trotting, hockey and rowing evolved. There is plenty of walking involved, so bring drinking water. Maximum group size of 25. Bookings essential.
Arranged by the Total Environment Centre Inc.
Cost: \$25/\$20 - a delicious lunch is included.
Phone: 9299. 5599

MONDAY 3 APRIL from 6 - 8 pm ORAL HISTORIES OF SPORT IN GLEBE

at Glebe Library, 186 Glebe Point Road
Come along and tell your sporting story and share your sporting experiences with others. An exhibition will be held at the library incorporating "Our Sporting Heritage".
Arranged by Leichhardt Municipal Library
Phone: 9367. 9266, Margaret Penson

TUESDAY 4 APRIL 6 for 6.30pm RACISM IN SPORT: PANEL DISCUSSION

at Gleebooks, 49 Glebe Point Road
At the time of printing it is anticipated that the launch of *One-Eyed: A View of Australian Sport*, by Douglas Booth and Colin Tatz will precede the panel discussion led by George Bracken, Aboriginal Liaison Officer at Glebe Police Station, and Colin Tatz, (also author of *Black Diamonds*) on the experience of indigenous Australians in boxing, hockey, rugby league and AFL. Details will be confirmed in the next *Bulletin*.
Arranged by The Glebe Society. Bookings essential.
Cost: \$6/\$4
Phone: 9660. 2333

WEDNESDAY 5 APRIL from 3 - 6 pm RACISM IN SPORT: INDIGENOUS AUSTRALIANS

at Tranby Aboriginal College, 13 Mansfield Street
The struggle for training, recognition and acceptance in the wider community. There will be guest speakers, film and informal talks with indigenous sporting heroes.
Arranged by Tranby Aboriginal College.
Phone: 9660. 3444, Yvonne Jackson

THURSDAY 6 APRIL at 7.30 pm THE GAMES PEOPLE PLAY

at the Community Room, Benledi, 186 Glebe Point Rd
Max Solling will talk about the games people played in Glebe, both traditional and not so traditional, from the mid 1800s to recent times.
Arranged by the Friends of Benledi and Glebe Library
Cost: \$7.50 - includes light refreshments
Phone: 9660. 7430

SUNDAY 9 APRIL from 2 - 4 pm GLEBE'S SPORTING STARS - WALLS OF FAME TOUR

at the Toxteth Hotel, 345 Glebe Point Road, tour the walls of Glebe's famous sporting stars with Max Solling. Meet the stars and listen to their stories. Entertainment by renowned busker John Dengate.
Arranged by Glebe Chamber of Commerce
Cost: \$5
Phone: 9552. 1546

Each year the National Trust of Australia (NSW) brings together community, cultural, business and other organisations throughout the State as part of an Australia-wide celebration of heritage.

The first Heritage Festival was held in 1981, and as Sydney is preparing for Olympics 2000 the theme this year is:

"Our Sporting Heritage".

Glebe's Son - the Father of the Nation



Sir Edmund Barton, Australia's first Prime Minister, was born in Glebe on 18 January 1849. He was the second of eleven children of William and Mary Louisa Barton. Barton's biographer, John Reynolds, describes Sydney at the time of his birth as "an energetic, bustling, self-seeking community, with little thought for anything but money-making and the cruder forms of amusement."¹

Edmund Barton was educated at the 'Model School in Fort's Street', Sydney Grammar School and Sydney University.² He was a brilliant student and graduated with first class honours in classics. He was admitted to the Bar at the age of 23 and entered the NSW Parliament at 30.

They included:

- free trade vs protectionism (Barton favoured free trade between the States but his Protectionist Party sought protection against cheap imported goods until local industries could become well-established)
- education (Barton supported state-controlled, free, non-religious and compulsory education)
- land ownership and control (Barton supported the wide and rational distribution of the land rather than siding with the larger land owners and squattocracy).

He was knighted in 1902 and served as Prime Minister until

RT HON SIR EDMUND BARTON - QUICK FACTS

Born:	18 January 1849 at Glebe, NSW
Married:	Jane (Jean) Mason Ross in 1877 They had six children, one of whom (Wilfred) became the first Rhodes Scholar from NSW ⁴ Sir Edmund was a member of the Protectionist Party. His electorate was Hunter, NSW. He was Prime Minister from 1 January 1901 to 24 September 1903, and Senior Puisne Judge of the High Court of Australia, 1903-1920.
Died:	7 January 1920 at Medlow Bath, NSW.

During Barton's 20-year political career in NSW, he was Attorney-General in two administrations, Speaker in the Legislative Assembly as well as Acting Premier and Leader of the Opposition for short periods. In the early 1890s, Barton turned from state affairs to join the push for federation of the States to become the Commonwealth (Barton's term) of Australia. He is said to have made three hundred speeches in three years in support of Federation.³

Barton was commissioned as Prime Minister on 1 January 1901. The issues which dominated his term in office may sound surprisingly familiar.

24 September 1902. In 1903 he was appointed a Senior Puisne Judge of the High Court of Australia and served until 1920. At the time of his death on 7 January 1920 he was described as "Australia's Noblest Son".

The *Sydney Morning Herald* obituary read:

"Barton saw Australia's destiny and worked for it; he had a gift of political foresight denied to many more astute politicians. His work will last as long as Australia remains a nation, and therein he has made for himself a monument more lasting than Bronze and more precious than Gold."

THE CENTENARY OF FEDERATION JANUARY 2001

Glebe has a special focus for the Centenary of Federation celebrations to be held in January 2001, given that it is the birth place of Australia's first Prime Minister, Edmund Barton. (For further background on the Centenary of Federation, you could consult the website at www.centenary.gov.au)
The Society's Management Committee has formed a Project Team to look at ways in which the Centenary of Federation can be commemorated and/or celebrated by the Glebe community. Interested members are invited to join: please contact me on 9518. 6186.

Liz Simpson-Booker

¹ Reynolds, John. *Edmund Barton: Prime Minister of Australia 1901-1903*, Bookman Press, 1999.

² *Australia's Prime Ministers*, AGPS, Canberra 1994.

³ Barnard, Marjorie. *A History of Australia*, Angus and Robertson, 1980.

⁴ Norman, L.G. *Historical notes on The Glebe*, Council of the City of Sydney, 1960.



from the Editor's Desk

Dear Editor

Glebe now has shopping trolleys abandoned everywhere thanks to The Broadway Shopping Mall where no attempt is made to discourage this. There are no signs to tell people not to take the trolleys away, and the security staff do nothing to discourage it. The mall seems content to wait till someone rings the Trolley Tracker telephone number [1800 - 641. 497] to report abandoned trolleys and then, eventually, collect them. The trolleys - mostly from Coles and Bi-Lo - are an eyesore and a hazard to traffic: both automotive and pedestrian.

Unlike Leichhardt Market Town where there are signs posted at the mall advising people not to remove the trolleys from the grounds and where there are bollards placed closely together to make it difficult for customers to do so, the managers of Broadway seem content to let people wheel them away for later collection or just dumped in the tiny public park near Glebe Point Road where the pedestrian ramp from the shopping centre comes down - and where there is no trolley bay provided.

I have recently written to the Council about this and wonder if anyone else would like to do the same. Perhaps a scrap metal dealer would be interested in this situation.

Yours sincerely,
Duncan Ball



Dear Editor,

Given the high-incidence of graffiti in Glebe, I was somewhat surprised by the lack of response to Ena Fovthis' story in *Bulletin* 9/99. One would have thought that you would be flooded with comments. Not so. Interestingly, there also seems to have been no response from the Society's Clean Up Glebe Project Team, whose brief, I believe, covers graffiti. Does this mean we are learning to live with it? Or is the Great Australian Apathy alive and well in Glebe.

Ms.Fovthis' story was a poignant piece and showed us that self-styled graffiti artists are human, as is shown by their camaraderie with the late Reg Mavin, yet they show no similar concern for the property they deface, nor the cost to Council and ratepayers, such as his mother. Ms. Fovthis also commented that perhaps this graffiti stage was a passing phase in her son's life. This may be so, but if every teenager in Glebe goes through this same stage, then we will never see a reduction in the level of graffiti in our community.

Yours truly,

Ms N.O. Moore

CONGRATULATIONS! LUCY and HILLIER



The Society's St. Scholastica's College Modern History Prize 1999 was awarded to Year 12 student Lucy

Watchirs Smith for both 3 unit and 2 unit Modern History.

The Society's Glebe High School History Prize was awarded to Year 12 student Hillier Mackell.

The inaugural Hoddinott Poetry Prize will be awarded to a Glebe High student this year.

Both of Glebe's secondary school students fared well in the 1999 HSC examination; the Glebe Primary School was also very proud of the results their students achieved in the Maths Competition run by the University of NSW, where students were awarded two distinctions and four credits.

CONGRATULATIONS TO ALL!

St Helen's Community Centre 184 Glebe Point Road

The Victorian Italianate style house, 'St. Helen's', at 184 Glebe Point Road, has recently been completely refurbished for use by Leichhardt Council as St. Helen's Community Centre. Judy Wingfield, Council's Project Officer for this work, advised that all services, which will be predominantly for older or disabled people, will be in full operation by the end of February.

A very large amount of money has been spent on restoration and renovation, including almost \$500,000 from HACC (Home and Community Care, which is run by the State Government's Department of Ageing and Disability); Council has contributed substantially from funds from its s94 Community Services Plan.

The front section of the house ('St. Helen's'), was built in 1902, the back section was built in the 1950s. The new paintwork is based on colour scrapings of the original colour scheme of the house. Plans are to make the garden part of parkland for public use.

The Centre co-ordinator is Paul Carson, who has been LMC Aged and Food Services Co-ordinator for many years. Council services which will operate from the Centre include: home maintenance; meals on wheels; daily centre-based meals for aged or disabled people; and a daily activities programme. The Leichhardt Council community bus will also be based there.

Council has let space in St. Helen's to four tenants, the Physical Disability Council of NSW, Recreation and Peer Support (for young people with disabilities); Community Transport, and 2RPH - Radio for the Print Handicapped. The Mayor of Leichhardt will officially open the St. Helen's Community Centre on 29 March 2000.

Inner West Light Rail Progress

Construction is now 20% complete and on target for the first test trams to run in July. Weed removal is complete and the old asbestos cable conduits have also been removed. The second platform at Wentworth Park is nearly finished and work in earnest is about to start on the Glebe platforms.

Fare structures are still being finalised and at this stage there will not be a ticket sharing procedure. Noise and vibration compliance testing will be carried out as part of the commissioning of the project.

PARKING

Leichhardt Council is advancing the design of the base line parking surveys and has given an assurance that it is amenable to further meetings after the rail is opened to discuss parking issues. Parking problems adjacent to the stations is clearly a major concern for many. The prerogative of residents to annex public streets for their own parking can best be resolved by local area parking permit schemes and this will be the probable solution to any problems. However the approach is to wait and see what happens.

LANDSCAPING

Landscaper *Biodesign's* brief is limited to the soft (non structural) areas around the platforms and within the rail reserve only. The general design principles have an emphasis on promoting local species, increasing local biodiversity and low maintenance. Impact on water quality and providing a habitat for local fauna are also high on the list. Attention will be given to security issues.

Their design is for a structured landscape rather than an ad hoc bush landscape - sketches can be made available to interested parties. *Biodesign* is working with the Rozelle Community Nursery for availability of local species and plant stocks. There is an intention to 'brand' the Glebe station with either black wattles or perhaps paper bark trees. Feedback was asked for.

COMMUNITY INPUT

It is intended that each station should have a shelter at the adjacent roadway where people may wait to be picked up. There was some concern that these shelters might attract undesirables and the siting of these is to be further discussed with residents.

The access to the proposed Jubilee station has been relocated following input from adjoining residents. There is concern about an incident of trespassers entering the tunnel, and the consortium will tighten site security.

The Department of Transport is the custodian of the rail reserve and appears receptive to community input as to what to do with some small parts of the reserve that will not be required for the rail. People with ideas to offer should contact Trevor Townson at the Department of Transport (phone 9268. 2800) or myself.

The input of residents is resulting in several small but nonetheless significant and worthwhile refinements to the scheme. Everyone is welcome to attend meetings - the next is scheduled for 6:30 pm, 2 March 1999 at Benledi.

Steve Stewart

NEWS FROM ST. JOHN'S

We welcome the Rev Martin Hunnybun, who has been appointed Rector of St Johns and will commence duties after a service of induction on Thursday 13 April, 2000 commencing at 8pm. All are welcome.

St. John's Youth Worker, Andrew Talbot, works extensively in the local Glebe Schools and the community, including youth groups for various ages on Friday afternoons. For further details ring 9660. 1818.

Notes from the Management Committee meeting held 9 February



WELCOME

Society members Duncan Ball and Bob Day attended the February meeting to pursue concerns regarding trolley pollution and traffic respectively. Any member is welcome to attend Management Committee meetings.

NEW FOOTPATHS

Council is to be congratulated on its renewal and remediation of several stretches of footpath in Glebe Point Road. It is understood that Council is aware of persistent poplar shoots affecting the new work and has the matter in hand.

THE BROADWAY CENTRE

The Management Committee plans to invite representatives of the Walker Corporation to its April meeting to discuss concerns about a number of issues including trolley pollution, noise and traffic. More details in the next *Bulletin*.

WAR MEMORIAL

The Memorial that stands in Foley Park has been vandalised again. Repairs are under way. If you have any suggestions on how to make the memorial vandal-proof, we would like to hear from you.

LITTER

Litter, particularly in Glebe Point Road, is an on-going problem. The State Government has recently announced tougher penalties for littering. Further information about the proposal is being sought from the relevant department. Vice-President Jenna Reed Burns is also reviewing Hurstville Council's initiatives on littering [see Clean Up Glebe report, p3].

Notice Board

At the Glebe Library Art Exhibition



INTO THE NEW AGE: Reflections on a life of living

20 March-14 April

An exhibition of 30 art works in various formats by octagenarian Dr Leslie V Barnett

Works will be for sale and range in price from \$55-\$195, with a percentage of the profits donated to the library. Refreshments will be served. Gold coin donation.

Official Opening, Monday 27 March from 6.30 p.m.

Richard Zimler Lunch time talk

2 March at 1.00 pm

Author Richard Zimler is an American expatriate who lives in Porto, Portugal. His first novel, *The Last Kabbalist of Lisbon* was an international best seller. His latest work is *The Angelic Darkness*.

RSVP to Margaret Whittaker 9367. 9262 for both events

Internet training for beginners

Every Monday at 12 midday

The one hour course covers the basics to get you started on the Internet. \$15/session - maximum of three people in a class.

To book call 9367. 9262

GLEBE PRECINCT MEETINGS

Precinct 12 - Forest Lodge:

Contact - Anthony Nicholson: 9660. 4393

Precinct 13 - Glebe Point:

Contact - Christine Newton: 9660. 8349

Combined Meeting Precincts 12 and 13
Toxteth Hotel Meeting Room
1st Wednesday each month - 7.00 pm

Precinct 14 - Glebe:

Contact: Peter Wright: 9566.2018

Last Monday each month

Mitchell St Community Hall - 7.30 pm
(just off Glebe Point Road)

The next issue of the *Bulletin* will be produced by Cynthia Jones, and copy can be sent to her at 152 Bridge Road, or ccynthiajones@ozemail.com.au

WALK AGAINST WANT

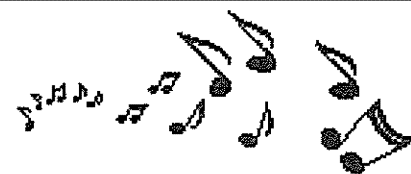
WE'RE ON THE MAP!

Community Aid Abroad (CAA) is an Australian subsidiary of Oxfam, founded in 1942 as a committee for famine relief. It has since expanded its activities to include more general assistance to disadvantaged communities to help them help themselves.

CAA organises Walk Against Want all over Australia every year to raise funds. I don't know what we've done to deserve the honour, but this year's Sydney walk will start at 10 am on Sunday 19 March from Victoria Park, go past the Great Hall of the University of Sydney, over the footbridge and through Glebe.

If you wish to participate you can obtain a sponsor book by ringing 1800 034 034. I hope to see some of you on the day.

Ian Edwards



Friends of Benledi and Glebe Library
invite you to a talk on -

Three Periods of Music

7.30 pm at Benledi
Monday 13 March

Judith Loughlin, Glebe resident and lecturer in music at Wesley Seniors' College will talk about the three periods of music - the baroque, the classic and the romantic.

Light refreshments will be served. All welcome. Cost: \$5.

OOPS!

In an article about Glebe's street trees in *Bulletin* 10/99, we paraphrased a comment which we wrongly attributed to Scarlett O'Hara. It was, of course, Rhett Butler who said "Frankly, my dear, I don't give a damn!" [Ed.]

For Your Diary ...

Thursday	2 March	Lunch hour talk by author Richard Zimler 1 pm at Glebe Library, see Notice Board
Thursday	2 March	Light Rail Consultative Committee meeting 6.30 at Benledi - all interested parties welcome, see p11.
Sunday	5 March	Clean up Australia Day 10 - 2 pm, see p3
Wednesday	8 March	Management Committee meeting 7.30 pm Toxteth Hotel Meeting Room - all welcome
Monday	13 March	Three Periods of Music - talk by Judith Loughlin 7.30 pm at Benledi - see Notice Board
Sunday	19 March	Walk Against Want - see Notice Board
Wednesday	22 March	Seniors' Week: 'A New Age' - events/displays at Glebe Library Glebe High School Open Night 5.30 - 7pm starting in the Library - all welcome
Monday	27 March	Official Opening 'Into the New Age' Art Exhibition 6.30 pm at Glebe Library, see Notice Board
Wednesday	29 March	St. Helen's Community Centre Grand Opening 11 - 2.30pm 184 Glebe Point Road, see p10

ADVANCE NOTICE

Sunday	1 - 9 April	National Trust Heritage Festival - details p9
	16 April	Innominata Choir performance 3.00pm St. Scholastica's Chapel - details in next <i>Bulletin</i>

The Glebe Society Inc

MANAGEMENT COMMITTEE

President	Bruce Davis	9660. 7873
Vice-President	Jennifer Reed Burns	9692. 9369
Immediate Past President	Russell Stewart	9660. 8324
Secretary	Liz Simpson-Booker	9518. 6186
Treasurer	Alan Hunt	9660. 2407

Committee Members:

Marianne von Knobelsdorff	9692. 0916	
Andrew Craig	9566. 1746	Ian Edwards (bh) 9660. 3240
Cynthia Jones	9660. 2451	Ted McKeown 9660. 3917

SUB-COMMITTEE CONVENORS

All convenors are *ex officio* members of the Management Committee

BAYS AND FORESHORES	Collin Hills	9660. 8608
ENVIRONMENT	Christine Whittemore	9660. 7969
- including Noise Pollution	Andrew Craig	9566. 1746
FRROGS	Roberta Johnston	9552. 3248
PLANNING	Neil Macindoe	9660. 0208
TRANSPORT AND TRAFFIC	Jeanette Knox	9660. 7781
- including Light Rail	Steve Stewart	9660. 5845

PROJECT TEAMS

Centenary of Federation	Liz Simpson-Booker	9518. 6186
Clean Up Glebe	Jennifer Reed Burns	9692. 9369
Conserving Glebe Heritage	Christine Whittemore	9660. 7969
Foreshore Walk and Cycle Way	Judy Vergison	9692. 9200
New Initiatives	Ilze Frank	9571. 8495

CONTACTS

Archivist	Lyn Milton	9660. 7930
Historian	Max Solling	9660. 1160
Membership List	John Sleeman	9692. 9507
Bulletin Editor	Bobbie Burke	9692. 0343
Assistant Editor and New Members Contact	Cynthia Jones	9660. 2451

We are glad to publish
letters or articles:

on any matters of
interest to Glebe

on any topic raised
in the *Bulletin*, or

on any issues
relating to The
Glebe Society.

All correspondence should
be addressed to:

The Glebe Society Inc
Box 100 PO
Glebe 2037

DISCLAIMER

Views expressed in this
Bulletin are not
necessarily those of
The Glebe Society Inc.