



The

GLEBE SOCIETY

Bulletin

October/November 1998

A publication of THE GLEBE SOCIETY Inc Box 100 Post Office Glebe NSW 2037 Australia
Print Post Approved - No. 234093/000 10 No. 9 of 1998

MAPPING OUR HISTORY

The Glebe Society Inc has applied for a grant under the Federation Community Projects Program. This Program is funded by the Commonwealth Government which has allocated \$29.6 million from the Federation Fund (established in 1997) for small community driven projects to commemorate the Centenary of Federation and benefit communities across the country. The Society has requested a grant of \$85,000 for a project titled "Celebrating Glebe - Mapping Our History". Successful applicants will be advised in February/March 1999.

The project will produce a series of two-dimensional coloured maps which celebrate the social history of Glebe, from Aboriginal settlement to the present day, and will include:

- **SOCIAL ACTIVISM**
the anti-apartheid movement, women's liberation movement, the Council for Civil Liberties, etc
- **ABORIGINAL COMMUNITIES**
original and contemporary inhabitants, e.g. Tranby Aboriginal Co-operative College, the National Aboriginal and Islander Dance Theatre etc
- **HERITAGE AND TOWN PLANNING**
the Glebe Estate, the 1970s green bans, historic buildings such as Bellevue, Lyndhurst, etc
- **SPORTING PERSONALITIES AND VENUES**
Wentworth Park, Harold Park, boxing gymnasiums, Lew Hoad, Dave Sands, etc

Other areas include trade union, religious, commercial and political history.

A major map will be displayed in the Glebe Library and Leichhardt Council Chambers; smaller maps will be available for purchase by local businesses, residents and tourists.

The project will also produce an Educational Resource Kit which will emphasise the contemporary history of Glebe and the key role that the area and many of its residents have played in shaping Australia's social history. The Kit could be used by teachers, librarians, Glebe tour leaders and local historians. It will include reference notes, student activity booklets, audio tapes and walking tour maps.

The concept is based on the Common Ground Parish Maps produced in the United Kingdom. The Society has received letters supporting its grant application from Tranby Aboriginal Co-operative College, the Glebe Chamber of Commerce, Glebe Primary School, Friends of Benledi and the Glebe Library, FRROGs, and our local members of State Parliament.

We propose to involve the local community in developing the map to ensure that it represents the people and places which are important to all of us. If our application is successful, the project will commence in July 1999 and be completed in time for Glebe Week in September 2000.

Judy Vergison

IMPORTANT DATES

• **COMMUNITY GARDEN INFORMATION DAY**

Sunday, 1 November - see p5

• **MINOGUE RESERVE**

Draft Management Plan
(see green liftout, including response form)
Comments due Friday 13 November

• **ORPHAN SCHOOL CREEK GULLY INSPECTION**

Sunday, 15 November - see p3

HIGHLIGHTS

from the GLEBE SOCIETY MANAGEMENT COMMITTEE MEETING



All correspondence to Society contact people should be sent c/- The Glebe Society Inc PO Box 100 Glebe 2037

Traffic

Residents of Ferry Road have expressed concern about this road being made 'one-way', as it will encourage speeding. They would prefer it to remain a 'two-way' system, and hope the traffic planners will heed their concerns.

Concern was also expressed regarding the proposal for diagonal bus and car parking on the corner of Avenue and Arcadia Roads (for St. Scholastica's College). To keep buses out of residential streets, it was thought more appropriate to use the Maxwell Road entrance. This might also encourage Council to plant trees and clean up the graffiti in Maxwell Road, which has become an eyesore.

Glebe Cricket Club

We have been very concerned that Sydney City Council took no heed of the Landscape Plan which has been in place for Wentworth Park for many years - in fact, their officers did not even know of its existence! Permission was given by them to Leichhardt Council for cricket nets to be erected in the Park on the corner of Bridge Road, an area which had been set aside in the Plan for passive recreation.

The Mayor, Frank Sartor, has told us that no work will begin on the Landscape Plan until after the Olympics because of lack of money (although \$12 million was found to develop the City Bowling Club area as a park at the top of William Street long after our Plan was prepared!).

The Society received a letter from a young cricketer's mother regarding cricket nets in Wentworth Park (see p7). We endorse the need of adequate sporting facilities which have optimal rates of usage. It is appreciated that the youth of Glebe have specific requirements for active recreation, and that active and passive recreation needs must be balanced.

Federation Community Projects Program

A report on our application for a grant under this Program is on page 1. If we are successful our project will make us appreciative of the rich diversity there is in our suburb, and aware of the history of its different communities.

Library Painting

The long painting of Glebe Point Road by artist Cheng Jih Li (and donated by him to the community) is now being mounted on wood by the framers, and will soon be hung in the Glebe Library.

The Glebe Society Banner

We now have a large and highly decorative banner for use at functions - if you come to the Christmas gathering at the Library on Sunday 6 December you will see it displayed.

The Former Children's Hospital Site

See separate report, p6; also from FRROGs, p3.

FROM THE PRESIDENT

As I sit down to write this my mind is full of the death, at 6.30 last Sunday morning, of the youngest daughter of dear friends of ours. She was cycling at Castle Hill. It was in the news. A car came from the other side of the road and killed her. From that instant spread a wave of unquenchable pain - her family, her husband, friends. Cycling was part of her triathlon fitness training.

A few seconds earlier or later - one of those times where, against all the odds, the worst happens.

It is a reminder of how much the well-being and safety of all of us is in the hands of others - not only driving, but in control of disease, availability of gas, water one can drink, prevention of crime... on it goes.

Equally it is community organisations like The Glebe Society which can help put up a fight to protect people like cyclists by promoting cycleways. The Society's origins are linked to the movement to stop freeways from being built through the middle of the community.

We can lead the way in a new push for people on foot and bicycle to be encouraged, supported and protected. That seems to me to be in the interests of healthier ways of living, by encouraging all of us to do more to promote our own fitness and health, to help develop a less polluted environment, and to reduce the pressure on scarce energy resources.

A fine young person has been lost, and you can't get away from that. Let us hope it will make us think a lot harder about what it *really* takes to protect the people out there, especially our young, in the unequal battle against the motor car.



Russell Stewart

COMMUNITY CONSULTATION IS ALIVE AND WELL!

The development of the old Royal Alexandra Children's Hospital site is, as expected, going to have a huge impact on the Orphan School Creek Gully. Before the site was sold, FRROGs (through its role on the working party for the rezoning of the site) campaigned successfully for a 10 metre reserve with a 12 metre buffer zone adjacent. This land is now owned by the developer, Sterling Estates, who is currently drawing up plans for the 7 hectare site including the section of the Gully designated as a reserve and under South Sydney City Council (SSCC) jurisdiction. The whole of the Gully was listed as a heritage item in the conservation report for the rezoning of the site.

The whole of the Gully is owned by a number of stakeholders including Leichhardt Council, who are still trying to negotiate a land swap with the new Children's Hospital who own a parcel of land at the edge of the Gully. FRROGs have been acting in an advisory capacity and have attended a number of meetings with Sterling to achieve the best possible outcome for the Gully. Our data and research affirm the significance of the Gully as habitat, and Sterling share our view that the line of trees is an asset. With this in mind we are negotiating a contract engaging our own consultants, the National Trust, to co-ordinate and manage revegetation strategy, working in partnership and paid for by Sterling Estates.

However, the results of soil testing, and subsequent E.P.A. guidelines may require that the Gully land owned by Sterling is bulldozed, with the soil remediated on site, and the banks then put back in place. This outcome is a result of years of irresponsible dumping of waste products, partially burnt ash and other products contained in the land fill which make up the banks of the Gully.

In the absence of a viable alternative, FRROGs will support this proposal. This may seem an extreme position to adopt, but FRROGs take a pragmatic viewpoint which considers the long term future of the native birds and other inhabitants of the Gully. The short term impact on the native species in the Gully will cause substantial disturbance. FRROGs and the National Trust will assist Sterling to provide a model of rehabilitation, through staged management, applying strategies which aim to minimise the loss of species in the short term, and goals which aim to replicate a bushland setting providing habitat and resource for native birds and species under pressure in the urban environment.

In this case Sterling will be able to achieve the complete revegetation of the Gully land in a shorter time, having eradicated the comprehensive source of weeds, in new soil specially formulated to suit native species. They propose a concept which, though in early stages of planning, is worthy of careful consideration, and FRROGs are working with them to try and achieve its success. This involves co-ordinating all the stakeholders of the Gully and dedicating all the land of the Gully as one which would be managed and maintained by the National Trust, a trust fund set up to ensure its ongoing maintenance, and the revegetation of the whole of the Gully achieved with the considerable financial support and resources of Sterling Estates.

This option has obvious advantages for them by achieving the landscaping of the Gully in time to assist the sale of their residential development, as well as establish green credentials which they hope will act to

offset two provisions they want passed by the SSCC. One is the car-parking code requirement - which would leave the development short of approx. 350 car spaces. They want the SSCC to adopt Leichhardt Council's car ratio per dwelling formula. Given the problems we have already in this area with car parking, I believe that this is a reasonable request, and one that the local community may wish to address in submissions to SSCC regarding the development.

The second provision refers to a 15 storey tower building planned for the corner of Booth St. and Pyrmont Bridge Rd. This building will exceed the height limit by three storeys. Sterling prefer this

planning option, which allows 10,000 sq metres of open space on site as well assisting the retention of a historic precinct. FRROGs believes the trade-off for height, allowing generous open space on site, will minimise the impact of some 2000 new residents on the surrounding parkland and the Gully.

If you are interested in seeing the Orphan School Creek Gully and finding out how it will be affected by the planned development, or if you would like to become familiar with the scope of the concept plan for the whole Gully...

meet me at the bottom end of Hereford Street on Sunday 15 November at 10.00 am and I will be happy to walk you through the Gully.

Roberta Johnston



LOCAL AREA TRAFFIC MANAGEMENT: GLEBE

I have made a submission on behalf of the Society about the Local Area Traffic Management proposal for Glebe. I hope individual members of the Society have been able to look at the plans while they were on exhibition and that they have also sent in comments.



While agreeing with most of the suggestions in the LATM, the Society has commented on several points:

(2) We had previously suggested that a roundabout be considered at the intersection of St John's Road and Wentworth Park Road; we have asked that this still be looked at.

(4) We do not support the installation of a roundabout at the intersection of Glebe Point Road and Wigram Road. This is currently quite a safe crossing as regards reported accidents and the slowness for vehicles is, we believe, a discouragement for additional cars to use this route instead of remaining on the arterial roads. A roundabout also could take land from the open space beside the Library.

(6) We agree with most of the proposals for Wigram Road, but have queried the lifting of the left-hand turn prohibitions in the morning peak hours. In association with proposals for one-way traffic in Forsyth Street and Ferry Road, we fear this could revive earlier problems (which the no left-hand turns were designed to solve) of through traffic filtering through residential streets to bypass the Wigram Road/Glebe Point Road intersection. We are aware, however, that people travelling to work at St. Scholastica's College and the Hilda Booler Kindergarten find the restriction inconvenient.

We also suggested further traffic calming in Wigram Road to discourage speeding in off-peak hours and late at night.

(10) We reiterated our request for some kind of treatment (raised platform, bus cushion, paving) to mark the entry into a residential area at the Wigram Road/Crescent intersection.

(26) We do not support the proposal for angled parking for buses/buses and cars in Avenue Road. We are aware that residents do not like the plan, which seems excessive for solving the problems St. Scholastica's seem to have. We have suggested making greater use of the Maxwell Road entrance for bus set-down and pick-up, together with improvements (tree-planting, graffiti clean up), and making this a shared traffic zone. This could leave Avenue Road free and safer for parents bringing children to school. Some traffic calming devices could also be installed.

TRAFFIC REDUCTION KIT

Council has written to the Society, following publication of the Society's Draft Strategic Plan (see Bulletin 6/98) which includes reduction in traffic and improvement of traffic management. Council is seeking interest from neighbourhoods in Glebe to participate in a trial of the David Engwicht Traffic Reduction Kit. This kit seeks community-based solutions to traffic problems, and has been tried in Brisbane, apparently with some success. Essentially, the aim is to get a group of neighbours to work together on a problem in their immediate area.

If you would like to look at the information package which Council has supplied, or to have more details, please phone me after 31 October on 9660. 7781. Alternatively, if there is a problem that you and your neighbours are already concerned about, you could contact Council's Traffic Planner direct - David Trebilcock, phone 9367. 9216.

Jeanette Knox

FROM GLEBE TO THE AIRPORT

You may have noticed that there is a new public bus route in Glebe, supplied by Sydney Buses, No 352.

It is a mini-bus, with 23 seats, and in the usual green and gold colours of buses plying to and from Mascot.

It runs from Glebe Point, via Darling Harbour hotels, to the domestic and international airport terminals.

There are about thirty trips a day, every day of the week, from 5 am. to 11 pm, and even though it is not mentioned on the timetables (yet), I have discovered that the trip takes about 35 and 40 minutes respectively.

For one or two people it is much cheaper than a taxi. Timetables are displayed at several stops in Glebe Point Road.

John Hoddinott

GLEBE GETS A COMMUNITY GARDEN

A group of Glebe residents concerned about the use of various parks and open spaces in the area, has been meeting for five years to negotiate the use of an open space as a Glebe Community Garden. They were first offered a plot by the Department of Housing in Derwent Street, but this had to be rejected because of the toxicity of the soil; an opportunity then arose to use the open space adjoining the Parish Hall (also known as Record Reign Hall) in St. John's Road, and a licensed agreement with the Anglican Church has now been signed giving the group an initial period of one year to develop its ideas.



The concept of a community garden for Glebe was initiated by Jeannie Townsend, an Aboriginal woman on a work experience placement at the Glebe Neighbourhood Centre, and Valerie Joy, the Centre's Co-ordinator. The area will become a community organic garden operating one afternoon each week, and will contain an open lawn area for Church community use, native plantings, a raised vegetable garden, space for composting and a worm farm.

Work in the garden will be done by volunteers, with financial assistance from the NSW Department of Urban Affairs and Planning under its Tenant and Community

Initiative Programme (\$5000); the NSW Department of Housing and Boama Housing Association (\$500) and Leichhardt Municipal Council (\$1000). The Garden will be called "Kirawhan", an Aboriginal word meaning "place of flowers". Kirawhan is the name of an Aboriginal girl who lives with her family in Derwent Street, and local children have made mosaic tiles which will form part of the site decoration.

Practical assistance is coming from The Glebe Neighbourhood Centre which has donated a Lilly Pilly tree, and offered continuing support; Leichhardt Council will make available a machine for preliminary preparation of the land, including removal of unwanted plant material and trees (subject to approval of the Tree Preservation Officer), and a chipper to chip wood waste; Bio Design, a soil consultancy group, provided a profile of the site along with a list of species indigenous to the area and suitable to the soil; Green Life, a commercial organisation, has offered to provide mulch, compost and other soil improvers, and Rozelle Native Nursery group have offered help with seedlings of native plants.

There have been some staging delays, and the Group is designing a logo and planning an official launch of the Garden later this year. However, an Information Day will be held on the site (in the Parish Hall if it's wet) on Sunday, 1 November, from 4 - 6 pm. Everyone is invited to come and inspect the site, ask questions and make suggestions. Practical offers of help would be very welcome.

The Group is now established as The Glebe Community Garden Inc (with 12 core members) and meets on the site at 3 pm every Sunday - if you would like to attend, please confirm meeting time with the Secretary, Elizabeth Rooney, on 9566. 2561.

Bobbie Burke

THE 8TH GLEBE MUSIC FESTIVAL

There will be two musical events this year:

A Concert by the Innominata Choir
Sunday 13 December at 4 pm
St. Scholastica's Chapel
1 Avenue Road Glebe Tickets: \$5

A Harpsichord Recital by Erin Helyard
Saturday 19 December at 8 pm
Margaretta Cottage
6 Leichhardt Street Glebe Tickets: \$10

Drinks, cake and coffee will be served
(donation appreciated)

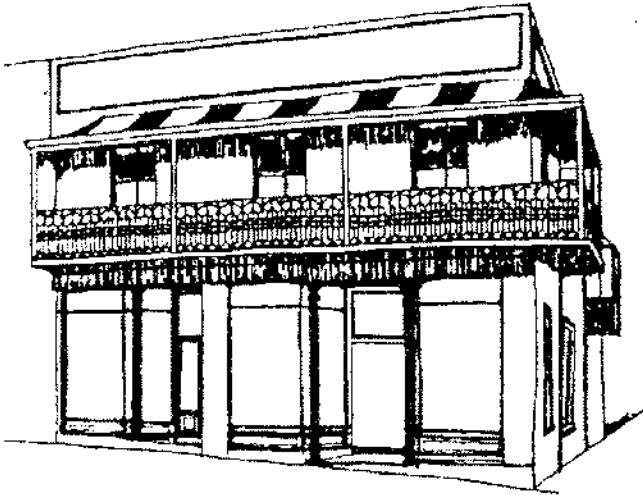
A booking form will be included
with the next Bulletin

Don't forget our Christmas Gathering

Sunday 6 December 5 - 7 pm
on the lawns at Benedi/Glebe Library
Details are in the last Bulletin.

"An Information Day
will be held on the site
(in the Parish Hall if it's wet)
on Sunday, 1 November
from 4 - 6 pm."

THE CHANGING FACE OF GLEBE



Fascination House: 115-119 Glebe Point Road
Leichhardt Council convened a well-attended public meeting at Glebe Town Hall, chaired by Cr Neil Macindoe in regard to the D.A. for the proposed redevelopment of this site on the corner of Mitchell Street. The corner property is Fascination House, the former Department of Housing Office. The D.A. requests that the current shop frontages be retained, and that the area behind on ground level become a tavern, with some food facilities.

The first floor would be turned into a dining room for the tavern, and separately next door, a medical practice. I was able to ascertain at the meeting that the lack of disabled access to the first floor usage would probably run counter to Council's policies concerning access for disabled people. The plans for an underground parking space from Mitchell Street appears to have risen from 11 to 13 spaces. There were several Aboriginal mothers at the meeting who were concerned about the proposal, and the possibility of it containing gambling facilities in the future.

I pointed out at the meeting that between the lodgement of the D.A. with Council and the date of the meeting, the State Government had proposed new licensing legislation to permit any restaurant or cafe to serve alcohol without a meal, if a one-off payment of \$15,000 is made. The legislation still has to be passed by Parliament, and we will have to wait to see how many eating places in Glebe take up the offer, but it must raise the question of whether it is necessary to have another alcohol outlet in Glebe.

Other Developments

Still no news concerning the Hamilton/The Abbey/Reussdale site, 156-160 Bridge Road, nor of the John Fletcher's site between Forsyth Street and Ferry Road, nor of the 461-465 Glebe Point Road site. I will try to have some information about Bidura, in Glebe Point Road, and the Royal College of Nursing site in Hereford Street in the next Bulletin.

John Hoddinott

Report from the Secretary on the Former Children's Hospital Site:

Over an hour of the October Management Committee meeting was spent by representatives of the developer, Sterling Estates, in a presentation of ideas and progress to date on redevelopment of the former Children's Hospital site. Sterling is working under the discipline of an existing Local Environment Plan (LEP) and Development Control Plan (DCP), with two significant differences - maximum height of buildings and provision for car parking.

The DCP was prepared by the previous owners of the site who had not considered the issue of retaining heritage buildings. The main Administration Block of the old Hospital is required heritage retention, however the developers consider that three other buildings could be retained, for both heritage and recycling reasons. The DCP requires a very dense development, with little open space, and by retaining these buildings, open space is sacrificed. Sterling Estates are proposing 27% of the site be given to public open space, with a suggested dedication to Council of 10,000 sq. metres along Orphan School Creek Gully, which would include a cycle way, a bush road, and two public walking trails ultimately connecting with the planned walkway to Blackwattle Bay.

They are also required by Council to put a 15 metre wide road through the planned residential development, with access from both ends of the site. In order to provide all of this public space, they need to exceed the height restrictions of Council's DCP. Their Master Plan indicates that the buildings which would exceed the height limits (including one at 15 storeys) would be along Booth Street, and the south side of the development, and would be little effected by overshadowing.

Sterling also want to provide more car parking spaces. Their planned 800 dwellings (a mix of low, middle and high price range) include terrace houses, apartments, retail, commercial and home/office style developments, and they estimate that 1086 car spaces would better accommodate both residents and visitors. They indicated that pressure from residents of Leichhardt Council might assist them on this matter, as it is in Leichhardt Council territory that problems from lack of parking space would be felt. They estimate that there would be 50% less traffic flow from the new residential development than there was when the site operated as a Children's Hospital.

The Master Plan will be available for inspection by the public at the South Sydney City Council Chambers early in November (for a period of 14 days); we understand that the Plan will also be available at the Glebe Library. Residents are encourage to comment. Enquiries can be made to SSC Council Planner Phoebe Ikladios, ph: 9300. 4301. [see also FRROGs viewpoint, p3. Ed.]

Christine Stewart

Letter to the Editor

Dear Editor,

I am writing in response to the comments made in the Glebe Society Bulletin [8/98] opposing the provision of cricket nets in Wentworth Park. I disagree with the position taken by the Society, as I believe the situation is more complicated than the paragraph in the Bulletin suggests.

Over the past few years, Glebe Cricket Club has made strong and determined efforts to build up junior cricket teams for Glebe youth. It now has 5 junior teams. The teams include many children from the Glebe Estate, with the club often waiving fees for those who cannot afford them.

The major problems the cricket club faces in providing opportunities for youth to play cricket in Glebe are the lack of a home ground for its junior teams and a lack of practice nets in Glebe.

The only nets in the area are those at Glebe High School, which are in very high demand. Although Glebe Cricket Club books the nets for exclusive use at particular times, the reality is that, as the nets are the only practice area available in Glebe, other members of the community come to use them as well. The combination of adults and children sharing practice facilities means that children are often crowded out, with dangerous situations arising. As well, the nets are in a secluded area, which needs to be cleared regularly of broken glass and syringes.

It was because of these concerns and the shortage of cricket nets in Glebe that the Glebe Cricket Club approached the Walker Corporation for funding for additional nets, to be located at Wentworth Park. The area that the cricket club suggests is between the greyhound park and the railway line. It is currently used for soccer and touch football in winter and has had cricket pitches located on it in the past.

Judy Vergison (Convenor of Wentworth Park sub-Committee) reports that there was a meeting in the Park on 19 October. All parties have now agreed to locating the cricket nets in the centre section adjacent to the bessa block wall, and this recommendation will be put to the Leichhardt Council meeting on 27 October for approval.

Regarding the Glebe Cricket Club's use of Jubilee Park, Councillor Macindoe recommends that the Club talk directly to Council's Chief Engineer, Mr. Peter Head. Ed.

While Glebe High School makes its nets available to the community, it charges community groups. While I am not sure of the exact amount, I understand last year the charge to Glebe Cricket Club was several hundred dollars, i.e. more than a nominal fee. This cost has to be covered through annual fees paid by members, with the club juggling finances to ensure that cricket is an affordable sport for all youth in Glebe. Provision of nets for a lower or no fee would make this task much easier.

I understand the Glebe Society's concern about the alienation of passive recreation areas. However, we live in a suburb in which recreational facilities for adults abound, but in which there are relatively few safe recreational outlets suited to the needs of young people to mix in groups.

While adults and young children like passive recreational space, youth tend to enjoy skateboard ramps, areas of bitumen where they can roller blade, and places to practice sport. These are activities which are often noisy and require facilities that impinge on other uses of parks. However, if we do not provide safe recreational facilities for youth to meet in groups, we should not be surprised if they create their own, less safe, forms of getting together.

For these reasons, I believe that the proposal to erect cricket nets for youth in a public park in Glebe should be supported, subject of course to placement of the nets being carefully planned.

I would also like to draw the Glebe Society's attention to another related issue, which is the lack of a home ground for junior cricket. Although Glebe has a cricket field in Jubilee Park, this is actually leased to a club based in Marrickville, which, not surprisingly, does nothing for youth in this area. Representations to Leichhardt Council by the Glebe Cricket Club to lease the oval have failed. I believe that this is a short-sighted decision by Leichhardt Council, in the loss of an opportunity to build a sense of community and a belonging by local youth.

I was pleased to see the Glebe Society's support for Glebe Youth Centre, but I feel that Glebe Cricket Club as a local, voluntary organisation also deserves support in its efforts to provide safe recreational activities for Glebe youth.

I have written this from the standpoint of a parent who has spent the last 3 years driving my child outside the municipality to play cricket, with growing frustration that the facilities our rates help pay for are not available for local children to use. ... I write as an individual and do not represent the Glebe Cricket Club.

Yours sincerely,
Genny Kang



We welcome your letters on any
matters relating to Glebe. Ed.

Notice Board

SUNDAY LUNCH



12.30 Sunday
8 November at
The Swish Brasserie
Shop 3,
131 Glebe Point Road

BYO, credit cards accepted.
Look forward to seeing you there.
Ian Edwards, ph: 9660. 3240

ANGLICAN CHURCH CALENDAR: 1999

Copies of the 1999 Anglican
Church Calendar are available at
a cost of \$10.

Order forms, together
with a sample page of
the calendar, are on the table at
the back of St. Johns Church.



**THE SOCIAL HISTORY OF
THE GLEBE TOWN HALL**
Our local historian, Max Solling will be
speaking on this topic at

The Glebe Town Hall
on Wednesday
11 November
from 7 - 8.30 pm

This event is part of the Inaugural Glebe
Summer Festival, hosted by
The Glebe Neighbourhood Centre

JOURNEYS OF LIGHT

9 - 30 November at the Glebe Library

An exhibition of photographs by
Leslie Barnet FRPS, EFIAP, AIAP
and accompanying poems by
Ken Stone, Lecturer in Creative Arts at
the University of Western Sydney

Dr Barnet and Dr Stone will talk about their work
at the Official opening in Benledi
7.30 pm Monday 9 November
Exhibition viewing 7 - 7.30 pm

Light refreshments will be served.
All welcome.

RSVP to Library Administration
ph: 9367. 9262 by 6 November

WOULD YOU LIKE TO BE PART OF THE WORK OF THE GLEBE YOUTH SERVICE?

We hold regular meetings for prospective volunteers
and the next one will be held on -

9 November from 4- 4.30 pm

at our 51 Glebe Point Road office.

The aim of these meetings is to invite interested people
to come and ask questions about the work we do, and
to consider if they would like to become part of our
volunteer programme. Volunteers can participate in
a number of ways - office/administration work, cooking
and food preparation, assistance with activities, etc.

We'd love to see you.

More information from
Simon Owen, Youth Worker, ph: 9552. 2873

AT THE GLEBE LIBRARY ...

- 1) Teddy Bears Picnic at Pre-school Storytime
Tuesday 3 November at 11 am
Bring your Teddy !
- 2) Happy Hour for School Kids
Thursday 26 November at 4 pm
Videos and free popcorn

DISCLAIMER

Individual views expressed in this
Bulletin are not necessarily those of
The Glebe Society Inc.

For Your Diary ...

Sunday	1 November	Glebe Community Garden Information Day 4 - 6 pm Parish Hall Garden, St. John's Road, see article p5
Tuesday	3 November	Melbourne Cup Lunch at Benledi 1.00 pm at Benledi - see Notice Board last Bulletin
Saturday	7 November	Glebe Big Bike Day 10 am Bicentennial Park - see last Bulletin, p8
Sunday	8 November	Society Lunch - all welcome 12.30 - Swish Brasserie, see Notice Board
Monday	9 November	Journeys of Light: Opening of Exhibition 7 pm at Benledi - see Notice Board
Monday	9 November	Glebe Youth Service - Volunteers Meeting 4 - 4.30 pm - 51 Glebe Point Road, see Notice Board
Wednesday	11 November	Glebe Society Management Committee Meeting 7.30 - Toxteth Hotel Meeting Room
Wednesday	11 November	Social History of The Glebe Town Hall - Max Solling 7 pm - Glebe Town Hall, see Notice Board
Friday	13 November	Minogue Reserve Management Plan Responses due - see green lift out
Sunday	15 November	Walk through Orphan School Creek Gully with FRROGS 10 am - meet at end of Hereford Street, see article p3
Sunday	15 November	Come and Sing Faure's Requiem St. Scholastica's Chapel Glebe - see Notice Board last Bulletin
Sunday	15 November	Glebe Street Fair Organised by the Glebe Chamber of Commerce
Tuesday	17 November deadline Bulletin copy
Sunday	22 November	FRROGS Bird watching at Orphan School Creek Gully 8.30 am - meet at the end of Foss Street
Tuesday	24 November	Leichhardt Council Meeting 7.00 - Council Chambers
[ADVANCE NOTICE]		
Sunday	6 December	Christmas Picnic at Benledi and Library grounds 5 - 7pm, see last Bulletin
Sunday	13 December	8th Glebe Music Festival
Saturday	19 December	See notice p5

The Glebe Society Inc

MANAGEMENT COMMITTEE

President

Russell Stewart phone: 9660. 8324
fax: 9660. 6582

Senior Vice-President

Jennifer Reed Burns 9692. 9369

Junior Vice-President

Cynthia Jones 9660. 2451

Immediate Past President

Mavis McCarthy 9660. 5119

Secretary

Christine Stewart 9660. 8324

Treasurer

Penny Haskins 9566. 4450

John Cody 9692. 9384

Ted McKeown 9660. 3917

Christine Newton 9660. 8349

Marianne von Knobelsdorff 9692. 0916

Andrew Wood 9660. 2194

SUB-COMMITTEE CONVENORS

All convenors are *ex-officio* members
of the Management Committee

Aircraft Alison McKeown 9660. 3917

Bays and Foreshores Jan Edwards
(BI) 9660. 3240

Environment Christine Whittemore 9660. 7969

FRROGS Roberta Johnston 9552. 3248

Light Rail Bruce Davis 9660. 7873

Planning John Hoddinott phone: 9692. 0071
fax: 9518. 9218

Traffic Jeanette Knox 9660. 7781

Wentworth Park Judy Vergison 9692. 9200

CONTACTS:

Archivist Lyn Milton 9660. 7930

Historian Max Solling 9660. 1160

Membership List John Sleeman 9692. 9507

Bulletin Editor Bobbie Burke 9692. 0343

Assistant Editor and

New Members Cynthia Jones 9660. 2451

Membership of THE GLEBE SOCIETY
INC.

Ordinary	\$30
Concession:	
Student/Pensioner	\$15
Institution	\$30

Write to Box 100 PO Glebe 2037
or phone Jeanette Knox 9660. 7781

If you have a matter that you would
like to discuss with the Management
Committee, please ring the Secretary,
Christine Stewart on 9660. 8324, and
arrange to come to a meeting.

DEADLINE

for copy for the
last issue of
the Bulletin
for 1998 is
Tuesday
17 November

Please send to
Box 100 PO,
Glebe,
or 32 Lombard
Street Glebe

in this issue

- the FRROGs' view of the residential development on the old Children's Hospital site, p 3
- a community garden for Glebe, p5
- your opinion sought on the draft Management Plan for Minogue Reserve - see green liftout

Print Post Approved - No. 234093/000 10

Postage
Paid

Ms Edwina Doe
224 Bridge Road
Glebe NSW 2037



The **GLEBE SOCIETY** Inc

Box 100 Post Office
Glebe 2037

The Glebe Library,
cnr Wigram and Glebe Point Rds.
is open as follows:

Monday and Wednesday

9.30 am - 8.00 pm

Tuesday, Thursday and Friday

9.30 am - 5.30 pm

Saturday

9.00 am - 12 noon

Phone: 9367. 9262

Fax: 9518. 9483

GLEBE PRECINCT MEETINGS

Precinct 12 - Forest Lodge:

Contact - Anthony Nicholson: 9660. 4393

Precinct 13 - Glebe Point:

Contact - Christine Newton: 9660. 8349

Combined Meeting Precincts 12 and 13

Toxteth Hotel Meeting Room

1st Wednesday each month - 7 pm

Precinct 14 - Glebe:

Contact: Peter Wright: 9566.2018

Meets 4th Sunday each month

Glebe Neighbourhood Centre - 10.00 am

DRAFT PLAN OF MANAGEMENT FOR MINOGUE RESERVE

D.M. Taylor Landscape Architects Pty.Ltd. have prepared a draft Master Plan of Management for Minogue Reserve. The Plan is on display on noticeboards in the Reserve and the Glebe Library and at Leichhardt Municipal Council Chambers until 11 November. Available for perusal at the Library and Council Chambers is the architects' 28 page report (plus appendices) which includes sections on the background and history of the Reserve, objectives

From the City Archives:

" That as recommended by the Health and Recreations Committee, and subject to the land not being zoned for other than industrial purposes, approval be given as a charge to the Capital Account, to the purchase from Sands & McDougall Pty.Ltd., in the sum of \$5,250, of land situated at the corner of Francis Street and Franklin Street, Glebe ... for the purpose of the establishment thereon of a Rest Area and Children's Playground ..."

2457/49

" That as a mark of appreciation of the services rendered to this Council by Alderman Minogue, M.H.R., for a period of twelve (12) years and of his work and interest in obtaining the area of land at the corner of Francis and Franklin Streets, Glebe, for the establishment thereon of a Rest Area and Children's Playground, such area be named 'Minogue Reserve'. "

2457/49

and performance targets, which form the basis of their management plan.

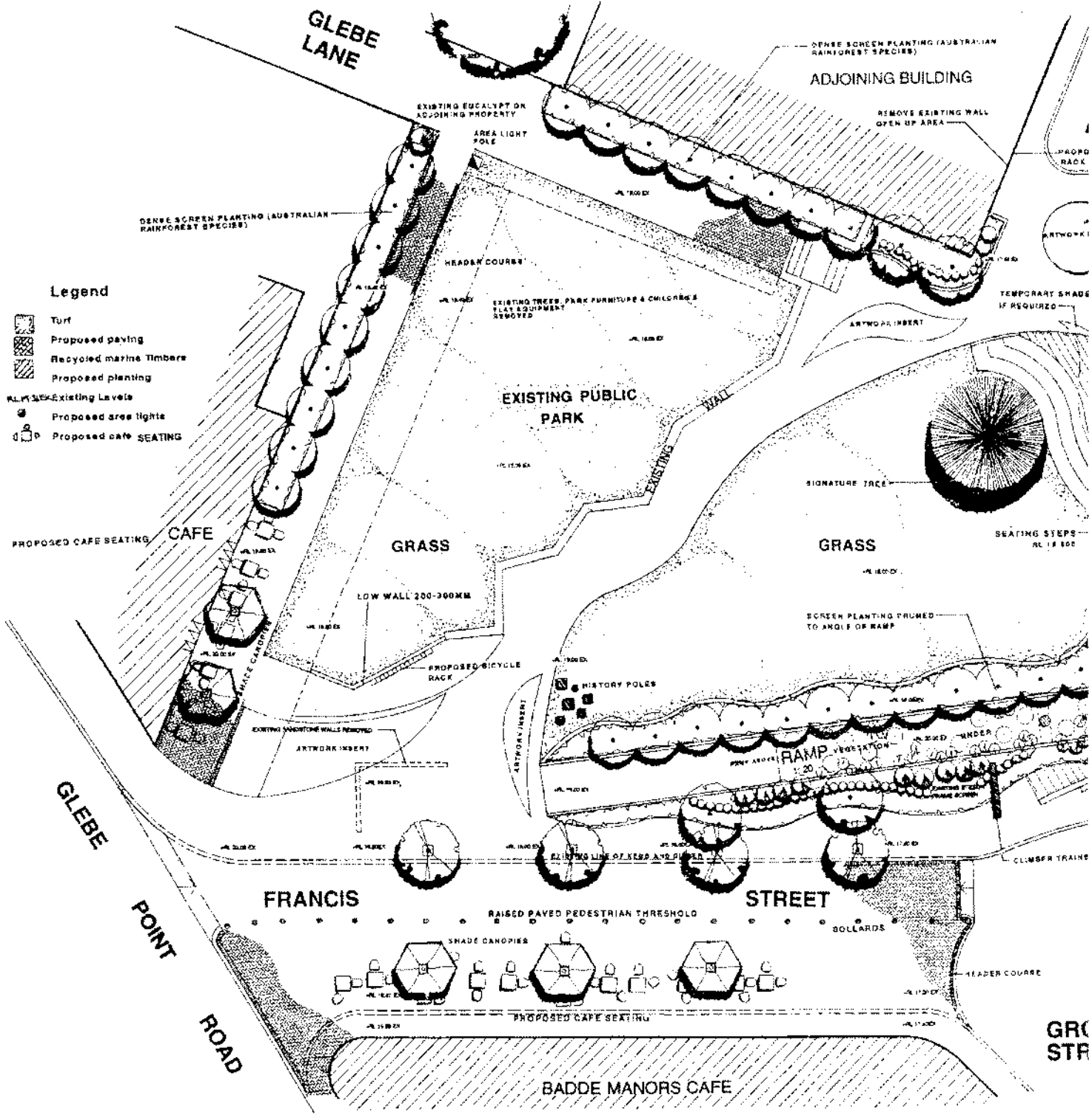
Eight significant issues have been addressed in the report, listing the concerns expressed by the community and the recommendations made by the architect. Community feedback forms, asking for comments on each of these issues, are also available at the Library and Council Chambers. The forms should be returned to the Engineering Department, L.M.C., Box 45, PO Leichhardt 2040 by 13 November. Further enquiries can be made to Council officers Vince Cusumano or Vince Caccavo on 9367. 9006. Because the Society has taken a particular interest in the fate of Minogue Reserve, we have included the Plan of Management and the feedback form (pp2-4 of this lift-out) with this Bulletin, and encourage members to respond.

Under the Action Plan in the report (pp24-25) the following work is to be completed by December 1998 -

- planting of dense screening shrubs to base of ramp and trimming to height of the ramp.
- planting of shrubs and fencing the area under the ramp
- provision of screening shrubs on grade areas immediately adjacent to the ramp
- painting of the ramp
- removal of the asphalt terraces
- reinstatement of the turf areas
- removal of existing jacarandas and olea adjacent to cafe
- rationalisation (removal) of furniture in the Reserve
- new planting to be made to end of open space

Some history of the Reserve as reconstructed by the City of Sydney Archivist for D.M. Taylor reveals that there may have been stables and sheds on the land prior to 1859; in 1860 there were two houses, gardens and sheds. By 1868 there were four cottages, and by 1879 there was a shop at the western end adjoined by four cottages - the properties were owned at this time by 'John Howard'. In 1890 a brush factory appeared on the western end of the site (then owned by 'Mrs. Wyld') adjoined by three cottages. By 1921 ownership passed to Lamson Paragon, with Improved Capital Value of one property of £1400, and the remaining three at £333 each. It appears that in 1924 the land was vacant, and Sands and McDougall Pty.Ltd. took over as owners in 1925; records show that the land was still vacant when resumed by the Sydney City Council in 1951 at a cost of £5,250.

The final Plan of Management will be released at the end of November 1998, and any further community consultation meetings required will be advertised through a letter drop organised by Leichhardt Council.

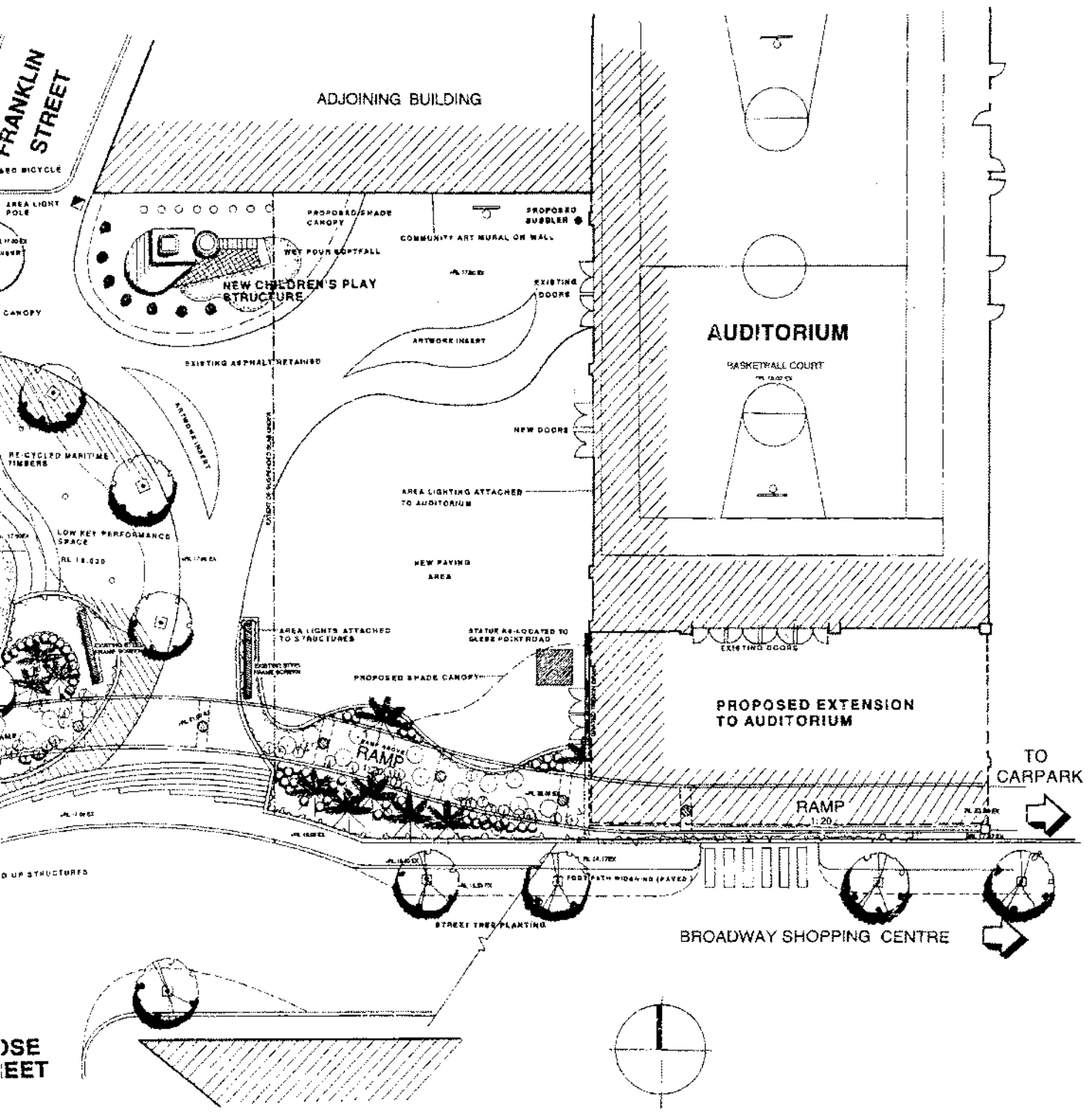


Legend

- Turf
- Proposed paving
- Recycled marine timbers
- Proposed planting
- Existing Levels
- Proposed area lights
- Proposed cafe seating

Prepared for Leichhardt Council

Minogue
Plan of



Reserve
 Management

D M Taylor Landscape Architects Pty Ltd
 Telephone: 9290 2133 Facsimile: 9290 1839
 Email: DMTAYLOR@bigpond.com

Minogue Reserve

Plan of Management

Public Exhibition

The Draft Plan of Management is on Public Exhibition until the 11th of November 1998

Your input is valuable to us .

The plan of management addresses the following issues. Please indicate your comments regarding these issues :

1. Open Space

2. Links / Amenity.....

3. Security / Lighting.....

4. Recreational opportunities
& constraints for Auditorium.....

5. Artwork.....

6 Disabled access ramp to Broadway shopping centre.....

7 Noise.....

8.Maintenance.....

9.Other comments.....

.....

.....

Thankyou for your participation for any further enquiries please contact
Vince Cusumano or Vince Caccavo, Engineering department, Leichhardt Council,
Telephone: 9367 9006