

THE GLEBE SOCIETY BULLETIN

Box 100, Glebe 2037

No. 8 OF 1984

OCTOBER

MANAGEMENT COMMITTEE MEETING - SEPTEMBER

Liaison with other organisations:

- The Society will renew its membership of the Sydney Harbour and Foreshores Committee.
- We will also renew our membership of the National Trust.
- We will send a delegate to the Royal Australian Historical Society, 5-7 October.

Traffic matters:

Several traffic problems were discussed at the meeting:

- the Secretary will write to Janice Crosio, Minister for Natural Resources, regarding the closure of the Canal Road off Federal Road. Copies of the letter will be sent to Pat Hills and Ald. Brian Thompson.
- the traffic sub-committee will be asked to investigate the lights at Glebe Point Road/Wigram Road and Taylor Street/Pymont Bridge Road.
- the Secretary will write to the Department of Main Roads requesting a change in the timing of the lights at Glebe Point Road/Pymont Bridge Road to facilitate a better flow of traffic at the intersection.
- Alison McKeown reported on a meeting at the Forest Lodge Primary School regarding the hazards to children and older pedestrians caused by the lights at Ross Street/Bridge Road.

Honorary Park Rangers:

Leichhardt Council is still looking for Honorary Park Rangers. If you would like to wear an official badge, ring the Council (see December '83 Bulletin for further details).



Heritage Council Listing?

The Heritage Council is investigating lower Glebe Point Road for its suitability for listing and therefore protection from destruction.

(Reports elsewhere in the Bulletin cover other matters raised at the meeting).

NEW GLEBE ISLAND BRIDGE

Officials of the MSB and the DMR have agreed that the height of the new Glebe Island Bridge, due for construction about 1988, will be high enough to allow access to ships already using the bays, but not high enough for larger ships.

The Society believes it may be possible to reduce the height of the bridge even further, depending on the outcome of the review of future Port needs referred to in last month's Bulletin.

IS THIS YOUR LAST BULLETIN?

It is, if you haven't renewed your membership. Pay up and you'll be put back on the list.

glebe food fair

BACKGROUND TO THE FOOD FAIR

The organisation of the first Glebe Food Fair was compressed into such a brief period that it was not possible to keep members informed. Here is a summary of what happened and the Society's role in it.

About seven weeks before Carnivale a group of Glebe restaurateurs, led by Lorrishka and Michael Fischer of the Rostihaus, met to discuss the possibility of holding a Food Fair on the last weekend of Carnivale - and to form a committee to organise it. Although they had left themselves very little time, the State Carnivale Committee approved the activity.

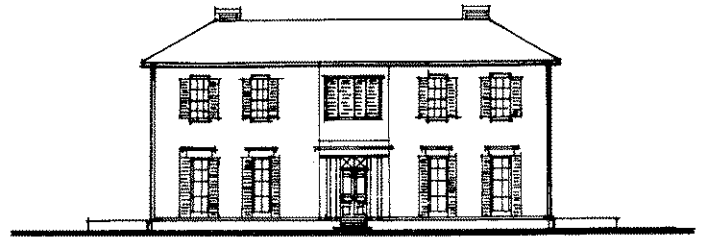
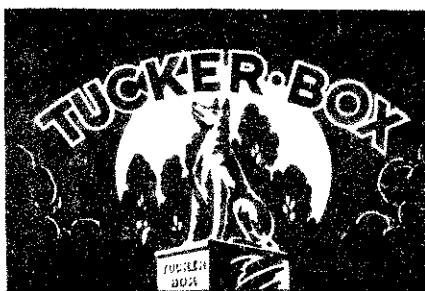
After some discussion the restaurateurs decided to ask the Society to send representatives to the Food Fair Committee and Maureen Colman and Penny Priest attended subsequent meetings. They reported favourably and requested the Society to liaise with Council to gain support for the Fair and arrange the closure of a section of Glebe Point Road.

The Mayor and Ald. Thompson gave their active support, and the Municipal Engineer arranged the necessary meetings with the police, DMR and UTA, and provided ordinance inspectors, barriers and additional garbage services.

The Society also provided, through its friends and contacts, a variety of other assistance, as well as two information stalls and a selection of posters, maps and literature. The Society also thanks St. John's Church, Juliet Richters and Tom Fletcher for their contribution to the success of the Fair.

It is estimated that at least 5,000 people attended the Fair, on Saturday 22nd November, which was a perfect Spring day.

The restaurateurs who participated intend to form a Glebe Restaurant Society at their first meeting following the Fair. Our President and Treasurer will attend and report in the next Bulletin.



LYNDHURST OPEN FOR HOUSE INSPECTION

The Historic Houses Trust has agreed to open Lyndhurst for the 7th Glebe Society House Inspection on November 4th, and is keen for as many Glebe residents as possible to see the progress made in restoring the interior. Unfortunately, although the staircase is now completed, work on the upper storey has been delayed and it will not be open this year.

The NSW College of Nursing has generously offered both Kerribree and the recently restored Hereford House, where all House Inspection tickets will be sold.

Other highlights of the Open Day include the house of Ian Evans, whose many books on Australian homes have publicised the architecture of Glebe so widely. Dr & Mrs Rivett have offered two particularly unusual and spectacular terraces, and Bill and Sally Nelson their beautifully preserved bungalow. Ted and Alison McKeown will open their cottage, which is a mine of information for potential restorers, as is the terrace of Dennis McManus.

At this stage it is not certain whether the Sze Yup Temple and the Courthouse will be available, but St John's Church will be open in the afternoon, and will include an organ recital.

PROGRESS AT BLACKWATTLE BAY PARK - Betty Wright

While I was walking my dog at the Park, I was pleased to see that the electric barbeque is almost finished. It has a double hotplate and is situated in the grass below the home units.

I couldn't see any sign of the toilets, which will be essential when people spend the day in the park with their friends.



YOUR HOME SECURITY CHECKLIST

1. Make sure your house or street number is clearly visible to the street so that Emergency services can identify the location quickly
2. Make sure that trees and shrubs are trimmed away from doors and windows to prevent concealment by intruders and allows neighbours and the police to check on the premises during your absence
3. Install good quality deadlocks to all perimeter doors, have a peephole or security door fitted to the front door so that you may identify callers to your home
4. Install key operated locks on all windows and vulnerable windows may be protected by having steel security grilles fitted
5. Consider having your external lighting connected to a timer to activate the lighting automatically during your absence
6. Don't leave tools and ladders outside the home as they may be used to gain entry to your home
7. Don't leave spare keys under doormats or other conspicuous places. Leave a spare key with trusted friends or neighbours
8. If for any reason you think your home has been illegally entered don't go in, go to a neighbour's home and notify the Police. Remember the intruder may be still on the premises....
9. Mark all items of value in the home by engraving or using a similar technique with the name and licence number....
10. Record descriptions and perhaps photograph all items of value such as coin, art, stamp collections and jewellery. On the rear of the photographs write a description of the article and keep this record and photographs in a place of safe custody, e.g. Bank....

(Provided by the Police Crime Prevention Section for NEIGHBOUR WATCH)

THE PRIEST FAMILY HAS MOVED

John and Penny Priest and their two young daughters have moved to Birchgrove. Their contribution to the Society over the past few years has been invaluable and we shall miss them. Penny will continue to work at St. James' School, and this will provide contact with the area. We wish them happiness in their new home.



Support the theatre in our own neighbourhood. Forth-coming attractions are:

"LOOT" - A play by Joe Orton
Wed 3rd Oct - Sat 3rd Nov.

"THE CONSUL" - An opera by Gian Carlo Menotti
Wed 14th - Sat 17th Nov.

"LADIES, LIFE & LOVE" - a one woman musical performed by Myra de Groot
Wed 21st Nov - Sat 8th Dec.

For further information ring 692 0964.

VISIT TO DEMETER BAKERY - SUNDAY 21st OCTOBER 11 am - 2 pm

Bookings are coming in thick and fast for the visit to the Bakery at 65 Derwent Street, so don't miss out. Please ring Edwina on 660 7066 (H) or 929 9848 (W) by Monday, 15th October.

Cost: \$5 adult. \$2.50 Pensioners and children.



ANY SAILORS IN THE SOCIETY?

The ferry Barogoola and the steel hull of the sailing ship James Craig are both in Rozelle Bay. An article about these ships would be most welcome for the Bulletin. If you are familiar with their history, please ring the Editor,

BULLETIN DISTRIBUTOR NEEDED

If you would like to distribute the Bulletin each month in the Forest Lodge area, please ring Neil Macindoe - 660 0208.

SORRY THE BULLETIN IS LATE

Your Editor was smitten by a particularly nasty virus which caused several days in bed doing absolutely nothing!

***Glebe is a great
place to live -
let's keep
Glebe clean!***

PEOPLE TO CONTACT FOR AREAS OF SPECIAL INTEREST:

Bi-centennial Park -
John Buckingham - 660 7780

Blackwattle Bay Park -
Bob Armstrong - 660 4189

Harold & Wentworth Parks -
Gideon Rutherford - 692 0239

Jubilee Park -
Tony Larkum - 660 7030

History Group -
Alan Hunt - 660 2407

Planning -
Alan Robertson - 660 6149

Traffic -
Jeanette Knox - 660 7781

The Committee is anxious to form groups to cover other interest areas. If you are willing to help form a sub-committee on any matter concerning The Glebe contact Neil Macindoe (660 0208).

FOR YOUR DIARY:

Full details elsewhere in Bulletin

MONDAY, 15th OCTOBER - 2.30 p.m.
Monday Group meeting.

MONDAY, 15th OCTOBER - 7.30 p.m.
Committee Meeting, 156 Wigram Rd.

SUNDAY, 21st OCTOBER
Closing date for November Bulletin
224 Bridge Rd., near Ross St.

SUNDAY, 21st OCTOBER - 11 a.m. -
2 p.m. Visit to Demeter Bakery,
65 Derwent Street.

SUNDAY, 4th NOVEMBER
House Inspections, 10 am - 1 pm
and 2 pm - 5 pm.

SATURDAY, 10th NOVEMBER
Foley Park Fair/Glebe Society
Garage Sale.

MONDAY, 19th NOVEMBER
Monday Group meeting - details
later.

MANAGEMENT COMMITTEE:

<u>President</u>	:	<u>Neil Macindoe</u> 660 0208 (H)
<u>Senior Vice Pres.</u>	:	<u>Edwina Doe</u> 660 7066 (H) 929 9848 (W)
<u>Junior Vice Pres.</u>	:	<u>Eileen Lacey</u> 692 0173 (H)
<u>Treasurer</u>	:	<u>Mike Curtis</u> 692 9416 (H)
<u>Secretary</u>	:	<u>Chris Barry</u> 660 6115 (H)
<u>Committee</u>	:	<u>Ted McKeown</u> 660 3917
	:	<u>Alan Hunt</u> 660 2407 (H)
	:	<u>Andrew Birtchnall</u> 660 5178 (H)
<u>Bulletin Editor</u>	:	<u>Edwina Doe</u>
<u>Distributor</u>	:	<u>Neil Macindoe</u>
<u>New Members' Rep.</u>	:	<u>Betty Wright</u> 660 1875 (H)

Membership of the Glebe Society costs \$8 per year (individual membership). For information ring Betty Wright on 660 1875.