

# THE GLEBE SOCIETY BULLETIN

Box 100, Glebe 2037

4/1982

## PARKS

### LOCAL ENVIRONMENT PLAN – OPEN SPACE

It was reported in Bulletin 2 1982 that Council intends to develop a Local Environment Plan (LEP) on Open Space. As our proposals were outlined to members in Bulletins 9 and 10, 1981, we won't detail them again here, but will outline some progress and some problems.

Our proposals came before Council's Trees and Open Space Committee on 15th April. This Committee recommended to Council that the areas we indicated "be marked as desirable open space on the Draft Local Environment Plan on Open Space". Council accepted this recommendation at its meeting on 20th April, 1982.

Mr Bruce Lay, the Council's Senior Architect Planner has the responsibility of integrating our proposals with the proposals of other wards as they are presented, then of translating all these proposals onto the Draft Local Environment Plan on Open Space. When the Draft Plan is complete, it will be displayed publicly and a response will be invited from the public.

The Bi-Centennial Park and Blackwattle Bay Park are important inclusions in our proposals and continue to dominate our attention as far as Open Space is concerned. They both present us with peculiar problems.

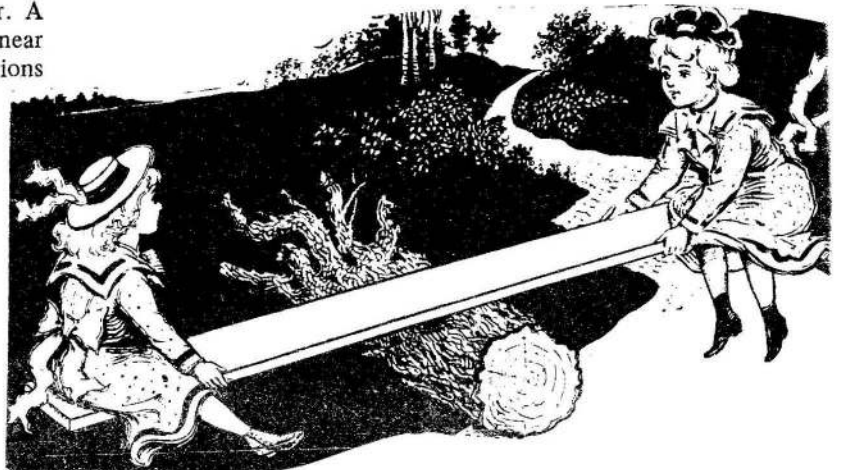
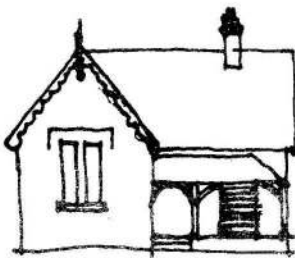
The Bi-Centennial Park cannot reach fruition, of course, unless the Maritime Services Board relinquishes its hold on the land between Rozelle Bay and Federal Road. Negotiations/discussions have been taking place between Mr Ferguson (Deputy Premier and Minister for Ports) and M.S.B. officials on the one hand, and Ald Nick O'Neill (Deputy Mayor and Convenor of Council's Trees and Open Space Committee) on the other. A further (and final) meeting is to take place in the near future. A full report will be made on these negotiations at their conclusion.

Funding for the project is sought from the Bi-Centennial Authority. As the response to the plan from the Authority's representatives has been so positive, we do not anticipate difficulties here.

In Blackwattle Bay Park planting and paving have been completed around Venetia and the southern section on the park extending to Cook Street where work is in progress on a cul de sac. Stone is being supplied by the Council for the retaining wall for the cut at the centre of the park. When this is finished mounding and planting will be extended to restrict access from the Units' parking area. It is expected that the contractor's work will be completed within three weeks. This includes grading and planting of the small block in Oxley Street. A maintenance period of twelve weeks will then follow before the developers hand over the park to Leichhardt Council.

The landscape architect has expressed his satisfaction with the quality of the plants and the techniques of planting and maintenance. A survey has indicated that the slopes are as planned. In the next bulletin it is hoped to report on a site meeting where representatives of the Glebe Society will be given an opportunity to discuss the park with the landscape architect and Council officers.

John Buckingham  
Bob Armstrong



## WINE BOTTLING

The next wine bottling will be at 2.30 p.m. at Tony and Hilary Larkum's, 17 Alexandra Rd (660 7030) on Saturday 12th July. We are giving plenty of notice to allow everyone to get their order in and to accumulate enough washed empty bottles. The wine will be ordered on the 1st July (ring 660 7030).

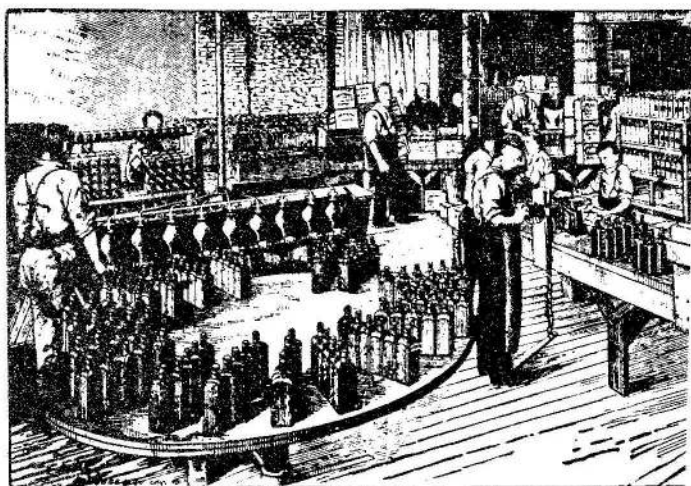
For those who have not taken part before it is worth outlining the procedure and to point out that this is an opportunity to obtain some very good wines (red and white) very cheaply. The price will be \$1.10 per bottle (orders generally fall in the range of 6 to 60 bottles).

The wine is obtained from Saltrams in 20L wine kegs. The current Saltrams dry white is a blend of Barossa and Lindsay Point grapes and containing Clare Riesling, Tokay and Semillon varieties. It is described as young, fresh, well balanced and with a crisp acid finish — ready for drinking now. The dry red is a 2-year old blend, predominantly Cabernet Sauvignon, from the Lindsay Point vineyards. It is described as a young fresh full flavoured wine with a trim tannin finish ready for drinking after only moderate bottle-ageing.

On the bottling day (17th July) all you need to bring is yourself and your washed bottles. Corks, labels caps and wine are all covered by the cost. Bottles should be washed in hot soapy fat-free water (removal of old labels is optional). On the day the bottles are sterilised by sodium metabisulphite before filling.

Although the red and white wine is usually good for immediate drinking both improve with bottle ageing. Many people have reported that they are still drinking reds bottled 5-7 years ago which are in excellent condition and comparable to commercial wines 5 to 10 times more expensive.

Tony Larkum



**1st July** — Last day to order wine (660 7030) for wine bottling on 17th July.

**17th July** — Wine Bottling at Tony and Hilary Larkum's, 17 Alexandra Rd (660 7030) at 2.30 p.m. Remember to order wines by 1st July.



## WHAT THE MANAGEMENT COMMITTEE DID

### Blackwattle Bay Park

Council is considering holding an official opening for the park, when the three month period for initial maintenance is over. The Committee decided to write to Council suggesting a meeting to plan the opening, and to seek reassurance that the Park will be inspected to ensure its conformity to the original plans.

### Glebe Society Membership Drive

John Hoddinott has drawn up a new pamphlet setting out The Glebe Society's aims and achievements. Subscriptions fall due in July, and the pamphlet will be used to attract new members.

### Asphalt Batching Plant

Plans have been presented to Council to establish an asphalt batching plant at the end of Wattle Street near Blackwattle Bay. The Glebe Society will oppose the development before Council.



## NEW LOOK BULLETIN

For the much improved appearance of this month's Bulletin we must thank Helen Deller, who has generously offered to typeset the Bulletin in this attractive style!

In this Bulletin we conclude Max Solling's article on WILLIAM BARDSLEY (1856-1929).

Bardsley's enthusiasm for sport was infectious and a number of his pupils were to demonstrate outstanding skills in regulated games that were to earn them parochial fame and, for the most skilful, recognition in the international sporting arena. His eldest son, Warren, became one of Australia's greatest batsmen, visiting England on four occasions (1909, 1912, 1921 and 1926) and three times scoring more than 2,000 runs on tour. He was the first man to make a century in each innings of a Test.

In 1912 it was a matter of great pride at Forest Lodge when three old boys, Bardsley, Tibby Cotter and all-rounder Charlie Kelleway played in Test matches together. Other notable old boys were Antarctic explorer, Douglas Mawson and Sir Bertram Stevens, Premier of New South Wales from 1932-1939.

A young David Kernohan on graduating in 1919 from kindergarten, run by the formidable Miss Heffernan, was greeted by an unblinking headmaster, "I hope you're not going to give us as much trouble as your father or uncle, Kernohan". Many small boys and girls experienced this remarkable greeting.

Ray, the youngest of Bardsley's children, wrote the following story about his father:

*Perhaps I may relate one of Dad's many efforts to help me through life. We attended St. Andrew's Cathedral, St. Mary's Cathedral, Presbyterian Church Broadway, Synagogue, Glebe Joss House, Pitt Street Congregational, Christian Scientists, Methodist Church opposite our house in Toxteth Road. At the end of these expeditions he said, "I know you were often very restless and bored with church services and now I can tell you that I was bored with some of it. But, at least, you will be able to make up your own mind about religion, because for a very long time I have been unable to fathom it all out.*

## HISTORY

*"To me", he said, "religion means always trying to do the right thing. In fact, in all your actions keep the spirit of fair play uppermost in your mind and don't forget that is how you should play your cricket which, when played properly is a soul saver and should keep you out of trouble for all your life."*

Bill Bardsley became a legend in his own lifetime. A dominating figure at Forest Lodge for thirty-nine years, remembered with affection by countless children who passed through his hands, he was a teacher who sought to impress upon his classes the importance of clear speech and the use of plain words. Bardsley actively involved himself in community affairs, was treasurer of the Glebe District Cricket Club from 1911 to 1922 (and a life member), a long-term treasurer of the local Rugby Union Club and a delegate to the Metropolitan Rugby Union.

At the end of 1921 the old headmaster reached the retirement age of sixty-five. The school was his whole life. He planted the large camphor laurels, peppers and Moreton Bay figs, which shaded the grounds, in 1883. To leave it all was a bitter blow to him. Hundreds attended a testimonial dinner at Glebe Town Hall in 1922, chaired by Mayor Percy Lucas to farewell Bill Bardsley. Bill and Rachael lived for a number of years at 18 Toxteth Road, at 1 Mansfield Street from 1908 to 1916 and in 1917 they moved to Strathfield.

"The Boss" suffered a stroke in 1923 and was confined to a wheelchair until his death on 15 June 1929 aged seventy-two years. Rachael Bardsley survived her husband and died on 13 April 1945.

Those who came under the spell of Bill Bardsley hoped that he went to some Valhalla where there were endless cricket matches.



## HEALTH CRAFT PROGRAMME

at Glebe Neighbourhood Centre

Are you over 50 and in reasonable health?

and interested in:

Understanding your body and  
and how it works

enhancing your health

through good nutrition, relaxation  
and exercise

avoiding accidents

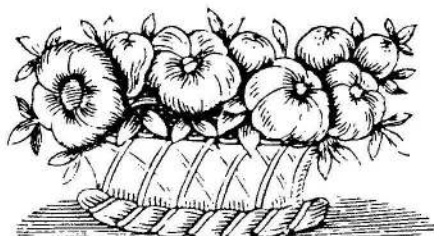
staying independent

getting more out of your life

*The staff of Glebe Community Care Centre will be  
running the Health Craft Programme, starting  
Monday 31st May (late starters 7th June).*

It consists of 13 weekly two-hour sessions.

*For more information  
ring Glebe Community Care Centre  
660 5455  
ask for Sue Crooks or Maggie Nelson*



## MANAGEMENT COMMITTEE

President	Maureen Colman	660 2302
Senior Vice Pres.	Bob Armstrong	660 4189
Junior Vice Pres.	Doris Sharpe	660 6636
Secretary	John Buckingham	660 7780
Treasurer	Gideon Rutherford	660 0239
Committee	Bill Nelson	660 0038
	Neville Holmes	692 0247
	Betty Wright	660 1875
	Diana Sharpe	660 4392
New Members Rep.	Michael Hough	660 7232
Bulletin editor	Jan Macindoe	660 0208
Bulletin distrib.	Doris Sharpe	660 6636



## For your diary

**Friday, 28th May, 7 p.m.**

Wine tasting, presented by Mr John Walker of Rhine-castle Wines, at Sydney College of the Arts, Glebe Point Road (opp. Max Factor building). Cost: \$7.00 Pensioners: \$2.00

**Sunday, 13th June, 11-1**

Coffee morning at the home of Rita Ramsden, 171 Arundel St, Forest Lodge. Why not drop in briefly for a cup of wine or coffee, and meet other members? New members always welcome.

**Monday, 21st June, 2-15 p.m.**

The Monday Group meets for afternoon tea at the home of Pat Moore, 12 Alexandra Road, For information, contact Vi Hicks, 660 3894.

**Thursday, 1st July**

Last day to order wine for wine bottling on 17th July. Ring 660 7030.

**Saturday, 17th July, 2.30 p.m.**

Wine bottling at Tony and Hilary Larkum's, 17 Alexandra Road. Remember to order wine by 1st July. (660 7030).