

The Glebe
Society

BULLETIN

No. 6 of 1975. (JUL-AUG)

P.O. Box 100, Glebe, 2037. Phone 660-0026.

SIXTH ANNUAL GENERAL MEETING

The 1975 Annual General Meeting of the Glebe Society will be held at the Glebe Town Hall on Wednesday, 20th August, commencing at 8.00 p.m. It will be proposed that the following reports be taken as read.

President's Report

Since the last Annual General Meeting the membership of the Society has increased from 320 to 360 ; and our active involvement in community affairs has been maintained.

During the year we continued actively to oppose the construction of expressways through Glebe. Many members took a leading part in the opposition to the demolition of houses in Fig Street, Ultimo by the Department of Main Roads for the North-Western Expressway; and have been active in the Anti-Urban Radial Expressway Committee. We have supported the campaign for better public transport in New South Wales. The Society's second Monograph, A North-Western Railway by John Gerofi and (secretary) Jim Coombs is an important practical contribution to the public transport discussion.

We have continued an active interest in planning. In concert with the Annandale Association and the Balmain Association we made representations to the State Planning and Environment Commission, in order to prevent the recall from the Commission of the Leichhardt Outline Plan, fully approved by the previous Council (1971-4) for re-consideration by the present Council. The Society was disappointed to note that the new Council, shortly after coming to office in September 1974, disbanded the Council's Planning Committee and Social Welfare Committee, dismissed its Deputy Town Planner, Penny Pike (who had played a crucial role in the development of the Outline Plan), and curtailed the 'open council' facilities for discussion and debate, so successfully pioneered as an experiment in community involvement by the

previous Council. The Society has sought to co-operate whenever possible with the new Council in the pursuit of its constitutional objectives. It has supported Alderman Cawley, for example, in his opposition to the sale of residential property owned by the City Council in Glebe. The sale would decrease the stock of low-income housing in the area.

The Society made successful representations to the National Trust to have Glebe classified as a conservation area (the fourth area in Sydney to be so classified). A list of public buildings in Glebe has been submitted to the Historic Buildings Committee of the Trust for consideration for classification.

The Society has given careful consideration to its role in social welfare activities. A Directory of welfare organisations was published in the February Bulletin. It was resolved that in view of the large number of welfare bodies active in Glebe the Society should not set up its own welfare committee but co-operate with existing bodies where help was sought and needed. Members of the Society have been active during the year in the Glebe Community Care Centre, the Australian Assistance Plan, the Elsie Women's Refuge Centre, the Good Neighbour Council and other community projects.

The Society has been concerned about the low standard of local journalism prevailing in Glebe. It has therefore given attention to proposals for the development of an inner-city radio and video-access centre and a community newspaper. It has supported the move for the development of a Community Resources Centre at 112 Glebe Road which will, among other things, seek to improve the media resources available to the local community.

The Society has maintained an active interest in social amenity and environmental problems. It has opposed the dominance of the Wentworth Park Trust by courting interests and is campaigning for the return of the Park to its originally gazetted purpose as free parkland for the recreation

enjoyment of all.

have advocated the use of Hudson's timber on Blackwattle Bay as a site for a new secondary school, and opposed (without success) use of the site for container storage. We stated a successful objection to a proposed expropriation of property in Allen Street by the South Wales Department of Education; we persuaded the Leichhardt Council on the dangers of 'k-killer' as a defoliant, and drawn attention to the illegality of the parking of semi-trailers in residential areas.

The Society noted with amazement the attempt made by some ageing members of the local branch of the Labor Party (in contravention of the policy of the Labor Party on community involvement) to expel Labor Party members from being members of the Glebe Society. We are pleased to record that the attempt has been unsuccessful.

In conclusion it must be noted that since the Society was established in 1969 many new bodies have been established in Glebe with objectives related to those of the Glebe Society. It is interesting to note that the Society has nevertheless continued to attract membership in the new situation while co-operating actively with many of the new bodies such as the Glebe Estate Project Office, the Glebe Community Care Centre, the Woolley Centre, and the Media and Resources Centre.

Finally, I should like to place on record the Society's thanks to Eric Sandblom for his many years of active involvement with the aims and objectives of the Society, both as a member and as a former alderman of the Leichhardt Council. We wish him a full recovery from his recent illness.

Bernard Smith.

WELFARE

NEW APPOINTMENTS AND NEW FACES IN GLEBE

The Glebe Estate (formerly the Church Lands in Shophorpe, St. Phillips, etc. - now owned by the Federal Department of Urban and Regional Development). We are particularly pleased to warmly congratulate one of our members, David Ng, upon his appointment as Project Manager of the Estate. As overall director he is making a big contribution for general redevelopment and provision of services in the area. David has a long association with community projects in Glebe; in addition to his formal professional qualifications, he brings a warmth and sincerity to his new role which will no doubt ensure its success. He is appointed as Nita McRea, as Community Development Officer; her job involves direct contact with tenants and she deals with any problems of residents and applicants.

Resources Centre - a citizen participation project, instigated by Glebe residents. It now operates from premises, courtesy of the Glebe Estate, at

112 Glebe Point Road. The Centre is currently looking for sources of funding for its various activities. It is likely that the Woolley Centre will also operate from this site in future.

(3) Australian Assistance Plan - The Glebe-Annandale Working Group meets on the third Tuesday of each month at 18 Glebe Point Road at 8 p.m. - all welcome! Delegates attend Inner-City Region and Leichhardt Sub-Region meetings. The groups are actively involved in developing a network of welfare facilities, and have already employed some full-time professional staff: - Scott Aden is Community Development Officer for the Leichhardt sub-region. He can be contacted at 21A Ross St., Glebe, ph.660-6620. Among his duties he distributes a monthly calendar of local events which is a good way to keep in touch with the Glebe scene. Also appointed via A.A.P. groups is Mauro Di Nicola, Project Officer (Migrant Liaison); he can be contacted via Scott Aden, should members have any queries about ethnic groups.

(4) Leichhardt Council has renewed the contract of employment of Marjorie Bull as Council Social Worker. In addition, a professional Child Care Worker, Colin Simpson, is employed full-time.

(5) Glebe Community Care Centre - the Centre continues to provide a full range of welfare and paramedical services for local residents. Recently appointed is a special Community Worker, Colleen Bourke. She has completed a survey, funded by the National Health and Medical Research Council, to define health and welfare needs in Glebe and Forest Lodge. The survey is based on a 3% sample of households. Copies are available from the Centre. Another survey, funded by the Poverty Commission, was made to evaluate the functioning of the Centre, to see in what ways the Centre helps to alleviate poverty in our Community. Copies of this latter survey are not yet available.

The Glebe Society's Role in Social Welfare.

As convenor I did not call any meetings; when I talked to other members about the subject I found them interested, but reluctant to attend formal meetings or make any regular commitment of time. There is some confusion about our role - the Society is not equipped to deal with individual personal problems; indeed, this is unnecessary when so many qualified staff are employed full-time to meet such needs (e.g., Social Workers at the Care Centre). Glebe is now very well served by a range of welfare agencies. Our chief role lies in supporting these agencies where possible, and in participating in relevant decisions (e.g., attendance at A.A.P. meetings).

It is important that the Society keep abreast of current welfare developments. This can be a demanding task in view of the proliferation of agencies and citizen groups now operating in Glebe. How best we should maintain liaison is a matter for the new Management Committee to decide.

Julia McConnochie.

Gardening Report

After a period of inactivity, the gardening group met at the beginning of December and discussed plans for the coming year. Monthly meetings commenced in February, and consisted of visits to the gardens of some of our members, to some gardens of members of the Addington Garden Club and to two public reserves. In all, there were seven meetings and a total of 5 members attended one or more of them. At a meeting of the management committee after the end of year under review it was decided that the society affiliate with the Garden Club of Australia and it would not be out of place here to make a few comments. The Garden Club of Australia is an affiliation of some 62 garden clubs in Australia, the great majority being in N.S.W. Its objects are set out in a quarterly magazine and are as follows:

1. Friendship through gardens.
2. To co-ordinate the interests of the garden Clubs of the continent and to bring them into closer relationships of mutual helpfulness by association, correspondence and conference.
3. To aid in the protection and conservation of our natural resources.
4. To encourage civic beauty and roadside development.
5. To study the fine art of gardening in all its aspects.
6. To co-operate with other agencies furthering the interests of horticulture and conservation.

Theo. Ahlston.

PLANNING REPORT

There has been some notable progress on a number of issues, but the pace was slightly more relaxed than in previous years. Vigilance is still necessary on a number of fronts. The main items for the year are summarised below:

The Outline Plan

The outline plan is still with the State Planning & Environment Commission. Leichhardt Council issued a report earlier this year on the changes proposed. The general consensus of opinion amongst the various Societies and people interested was against any change. The Society should take an interest in the outcome of this matter and progress.

Glebe Conservation Area

The National Trust classified Glebe as a Conservation Area last November. The listing was

based on work done over two years by members of the Society, headed by Tony Strachan. This is a significant event in the attempt to preserve Glebe in an architectural, historical and social context. The Society should now double its efforts in providing guideline literature and information to members and the community for the proper restoration of buildings in Glebe.

3. The Glebe Estate

The Bishopthorpe and St. Phillips areas are now owned by the Australian Government. Work on the estate is proceeding at an excellent pace with good management in all fields. Within economic restraints restoration is being carried out faithfully.

The Glebe Project Board also established a Design Review Committee made up of experts and interested members of the community to guide it in its restoration programme. The Society should be pleased that Tony Strachan and Bernard Smith are members of this committee. Mr. Athol Munday, Mr. David Young and the staff of the project office are to be congratulated for their sincere efforts in ensuring that the project will be a success.

4. Expressways (Freeways)

The threat of the North Western Expressway is still with us. As most members are aware, the demonstrations in Fig Street have brought the issue to a head. There is still no clear resolution on the issue from the State and Federal Governments. Several members are very active on the expressway committees. Alan Sorrensen has taken the initiative in this issue. Along with others, he has done tremendous work in this field. Continuing moral, physical and financial support is very necessary to resolve this problem. It can be said that there is increasing public support and understanding for the re-examination of the wider implications of expressways (or freeways, as the DMR now prefers to call them.)

5. Glebe Point Proposals

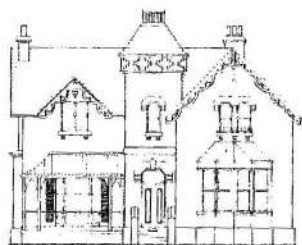
Parkes Developments have started demolishing in this area. Since the Council's Planning Subcommittee was disbanded there is little knowledge of the progress in this project. There are several significant buildings in the area, mainly in Leichhardt Street, that are slated for demolition. Since Glebe is now a Conservation Area, the Society should press the National Trust to impress on the developers the importance of this area and encourage them to preserve as many of the existing buildings as possible and design their new structures with some sympathy for scale and character of the existing area.

6. Planning Forum.

The planning forum held a very successful meeting at the Glebe Town Hall. This was organised by Albert Mispel and Dennis McManus. It was well attended and several important issues were raised. A full report of the meeting was published in the June issue of the Bulletin.

The Leichhardt Planning Forum.

A committee was made up of interested members of the public and held a very successful meeting at the Balmain Town Hall. It was chaired by Mr. Peter Webber of the State Planning and Environment Commission. A number of well known planners spoke at this meeting. The main point of discussion was public involvement in the planning process, and the methods by which an evolving type of planning scheme could be formulated. The meeting was attended by several members from the Society.



In conclusion, there has been progress on all fronts. Although with a change of Council there has been a slowdown in some areas, the planning committee and the Society should keep working towards resolution of these issues. Comment, criticism, new proposals and ideas should be presented constantly to encourage debate so that issues are kept alive and publicly acceptable solutions are found for them.

P.V. Perumal.

Environment Report

The newly-formed Environment Sub-Committee has been looking into areas of local environmental concern. There are many ways in which our environment is adversely affected - by air pollution, industrial pollution, chemical wastes, noise and other kinds of pollution. The Sub-committee is collecting evidence on these various types of pollution and is looking into ways of taking effective action. Plans are being put to monitor the fallout of solid materials in the locality and to organise an inspection by the Council of the Glebe shoreline.

Tony Larkum.

SOCIAL ACTIVITIES

This year our group has held a number of functions to bring the members of the Society together in a relaxed casual atmosphere.

The coffee mornings have continued, so that once a month, after the bustle of Saturday morning shopping, we can relax over a cup of coffee and a chat. As well a group of enthusiastic ladies has been meeting together on Monday afternoons at a discussion/crochet group and has provided help in the two Market Days held by the Community Centre.

Our first main activity for the year was the Ferry Trip to Clifton Gardens (November, 1974). About fifty members enjoyed a sunny cruise around the harbour, followed by a picnic lunch and swim. A number of children from Bidura and Royleston were taken out for the day.

The weather was on our side again for the '74 Christmas Party held at the Fowlers'. Over 100 members turned up, and enjoyed a home cooked dinner and dancing under a marquee. Quite a memorable evening.

Our 'welcome to new members' was conducted by Max Solling who took forty people on a 'Grand Tour of Glebe'. All enjoyed seeing the area and the interesting commentary of Max.

A number of people joined in a Theatre Party to see 'Black Comedy' at the Genesian Theatre (where one of our Glebites was starring). Others enjoyed a Wine Bottling at the Larkums (where a great amount of tasting was also done during the afternoon).

Our last party, to wind up the year, was held at the Larkums on June 20th, '75, to commemorate the Glebe Society Birthday. Guests arrived in a variety of disguises including an original mousketeer, a real cossack and an Elizabethan gentleman and his family. Supper was served.

All in all, a successful year, thanks to everyone who joined in and supported the social activities.

We regret that Hilary's year in U.S. and the arrival of Pickles no.2 will mean that we have to resign the posts for 1975-76.

Perhaps our new plan of a different person to organise each of the following activities, thus spreading the work, will get some volunteers. (Ring 660-4924)

Monthly	<u>Coffee Mornings</u>	Dorothy Perkins
Nov., '75	<u>Ferry Trip</u>	?
Dec., '75	<u>Christmas Party</u>	?
June, '76	<u>Birthday Party</u>	?
	<u>Welcome to New Members</u>	
	- 2 evenings	?

Thanking you.

Hilary Larkum & Kathy Pickles.

HISTORY

In conformity with long-established tradition (his, not ours), there is no written report from the Convenor of the History Group. However, it is usually worth going to the A.G.M. just to hear Max Solling's oral summing up of the year's historical events. This year should be no exception.

FOR YOUR DIARY

Wednesday, 20th August, Glebe Town Hall,
8.00 p.m. The Glebe Society's Annual
General Meeting.

Saturday, 6th September. Coffee Morning at Louise
and Peter Worsley's, 9 Boyce Street.
10.30 a.m. - 12.30 p.m. Refreshments 20¢

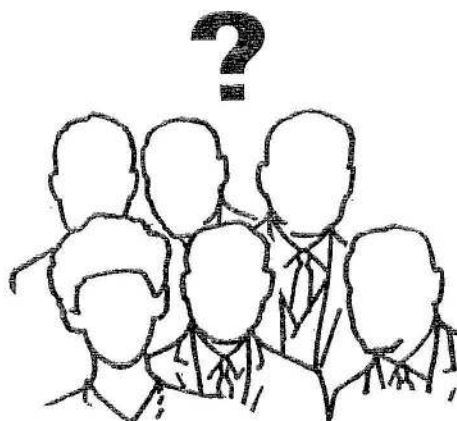
Saturday, 6th September. 2.00 p.m. The Gardening
Group will be hosts to the Paddington Garden
Club when visits will be made to some of
our members' gardens. Phone Jean or Theo
Ahlston on 660-1083 for details.

Saturday, 4th October. Coffee morning at
Maureen and Adrian Coleman's, 48 Boyce
Street. Perhaps you know the coffee morning
arrangements by heart - 10.30 a.m. - 12.30
p.m. - tea and coffee just 20¢! :

Early September, Tony Larkum is arranging a
wine-bottling. Please ring Tony (660-7030) for
details.

The next editor of the Bulletin will be Joey Rowden
and we welcome her with open arms. In future,
all copy should be sent to:-

Joey Rowden,
4 Leichhardt Avenue,
Glebe Point, 2037. 660-5704.



The following nominations have been received in
accordance with the Constitution for the positions
to be filled on the Management Committee for
1975-1976.

President:

Jeanette Knox

Senior Vice-President:

Allan Sorrenson

Junior Vice-President:

Ralph Kaye

Secretary:

Jim Coomba

Treasurer:

Ted McKeown

Committee:

D. Perkins

E. Sandblom

J. Potter

G. Johns

As no nominations have been received
for the position of Auditor, these
will be accepted from the floor at the
A.G.M.

Wednesday, 27th August, 8.00 p.m. The Glebe
Society play reading group will gather at
the home of Marion and Randall Jones, 27
Mansfield Street, to read Ken Waterhouse's
play "Billy Liar". We shall be very pleased
to see you there. Enquiries to Marion at
660 4072.

GLEBE LIBRARY

The Glebe Branch of Leichhardt Municipal Library is located at 191 Bridge Road. It offers on loan to adults fiction and non-fiction books, news magazines, pamphlets, garden and home decorating magazines, science magazines, etc. Inter-library loans can be arranged, books can be requested from Leichhardt, and readers can have books reserved for them if they are out on loan.

Atlases, almanacks and encyclopaedias are available for use at the library.

A home-bound readers service operates from Leichhardt Library. Forms requesting a librarian to bring books of interest to peoples' homes are

available from Leichhardt and Glebe libraries.

Glebe branch has an attractive children's library

book department, and the staff runs "story time" on Wednesday afternoons at 3.30 p.m.

Residents in the Leichhardt Municipality may join the library free of charge. Workers in the area may join on a reciprocal basis if they can show that they are members of their local libraries.

Four books and two magazines may be borrowed for up to three weeks - books can be renewed by phone. Children may borrow four books and two magazines if they are accompanied by adults, or two books and two magazines if they are unaccompanied.

Library hours are: Monday, Wednesday, Friday:
11.00 a.m. - 9 p.m.; Tuesday, Thursday, 11.00am
- 5 p.m.; Saturday, 9.30 a.m. - 12.00 noon.


The library's phone number is 660-4672.

Alison McKeown.

OCIETY - Statement of Income and Expenditure for the twelve months ended June 30th, 1975.

<p>ns - Household 345.00 Individual 258.00 Pensioner 12.00 Student <u>4.50</u></p> <p>st 57.99 us Sales, etc. 33.10 om Wine Bottling, May 1975 43.50 om Birthday Party, July 1974 6.50 rom sales of copies of "The tural Character of The Glebe, - donated by Bernard and Kate</p> <p style="text-align: right;"><u>865.30</u></p> <p>ie 1 625.89 iture 1 288.99</p> <p>* year transferred to Accumulated Funds <u>\$336.90</u></p>	<p>Expenditure:</p> <p>Donations, Subscriptions, etc. - Royal Australian Historical Society 12.50 Leichhardt Planning Forum 50.24 Royal Horticultural Society 4.20 Civic Design Association 10.00 Elsie - The Womens Refuge 50.00 Glebe Community Care Centre 25.00 Anti-Expressway Committee 50.00 Woolley Centre <u>2.00</u></p> <p>Bulletin - Printing 356.31 Envelopes 109.22 Postage 69.97 Secretarial, etc. <u>101.20</u></p> <p>Postages, etc Welcomes to new members 0 Crochet Group 0.00 Planning Meetings (2) 72.38 Ferry Trip 1.00 Annual General Meeting 17.50 Garden Competition and Flower Show 49.04 Printing Monograph No.2 40.30 Christmas Party 124.00</p> <p>Total expenditure <u>1 204.96</u></p>
<p>Accumulated Funds 1.7.74 562.97 plus Surplus for year <u>336.90</u> Total <u>899.87</u></p> <p>Represented by: Savings Investment a/c 715.94 Current a/c (less unrepresented cheques) 165.42 Cash in hand 118.11</p> <p style="text-align: right;"><u>899.47</u></p>	<p>nts reflect the position of the city in a true and</p>

ints reflect the
position of the
city in a true and

r.  Verden Vorkran
Hon. Auditor.

Allen, Richard
(1900-1901).