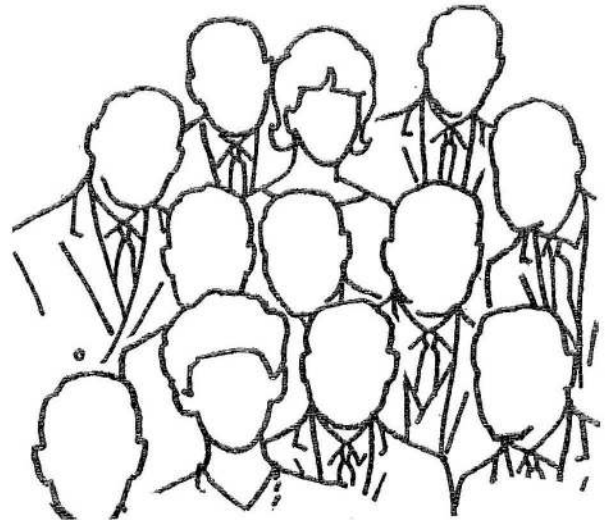


THE GLEBE SOCIETY BULLETIN

NEW FACES OF '73? ANNUAL GENERAL MEETING



The 1973 Annual General Meeting of The Glebe Society will be held at the Glebe Town Hall on Wednesday 15th August 1973 at 8.00 p.m.

At this meeting you will be voting for a new Management Committee for the next 12 months. Nomination for election to a position on the Management Committee is open to all members and it is critical that more nominations are received than last year when all members were elected unopposed.

That this happened may be interpreted as an expression of confidence in your Management but apathy on the part of members would be the more likely factor. Although the more immediate threats (such as high-rise buildings) are not the worry they were before the last Local Government election, Glebe is still threatened on all sides by container wharves, cement plants, freeways, trucks and all things that will destroy our "quiet enjoyment" of our suburb.

The present Management Committee, while happy in the service, have no desire to serve a 23 year stint. Let's have a lively election this year.

At the meeting the following members of the Management Committee are to be elected;

- president
- senior vice-president
- junior vice-president
- secretary
- treasurer
- 4 other committee members

Nominations for positions on the management committee must comply with Clause 10 of the Constitution. This means they must be signed by the nominated person (with occupation and address) and two proposers, and must reach the Secretary at least 14 days before the annual general meeting - in this case, 1st August 1973.

Only positions for which no nominations have been received in advance will be open to nominations from the floor at the annual general meeting.

THE GLEBE SOCIETY, P.O. Box 100, Glebe, 2037.

Phone 660 3529 or 660 6149

Annual Subscriptions: Ordinary \$2; Family \$3; Student 50¢; Pensioner 50¢

MEMBERS PLEASE NOTE: A RED CIRCLE HERE MEANS YOUR SUBSCRIPTION IS NOW DUE.

MEMBERSHIP FORM

I wish to (commence membership of the Glebe Society.
(renew

NAME:

PHONE:

ADDRESS:

I enclose cheque/postal note/cash for.....for my annual subscription as an ordinary/family/student/pensioner member.

PLANNING IN LEICHHARDT MUNICIPALITY

This is the fourth in a series of articles dealing with the community participation in planning now taking place in Leichhardt.

PRECINCT MEETING

All nineteen of these throughout the municipality have now been held and the Planning Co-ordinator, Miss Penny Pike issued an interim report.

1,200 people attended the meetings, 216 of these in Glebe, and apart from participating in the meetings filled in a questionnaire.

Most people said they lived in Leichhardt Municipality because of its central location, making it convenient to work, the city, other parts of Sydney and other urban services such as transport, shops and education.

Apart from the usual popular complaints about lack of an efficient garbage collection and dirty streets, most residents put more trees and parkland as the two features they would most like to see improved in the future.

Traffic and noise were also disliked whilst the residential flat buildings which have been built in recent times met with considerable disfavour.

Dealing particularly with Glebe, people were dead against expressways - much more so than people elsewhere in the municipality. Glebe people are keen to see the historical character and scale kept - which ties in exactly with the response to the recent Glebe Society circular on "A Conservation Area for The Glebe"? (About which more in a later article). The most frequent comment in the questionnaire concerning the future of the area was "no high-rise".

It is not possible to deal with the many particular issues raised at each meeting, but we hope to publish details of particular ones from time to time in the Bulletin and discuss, for instance, all the issues raised in a particular case - say a street closure.

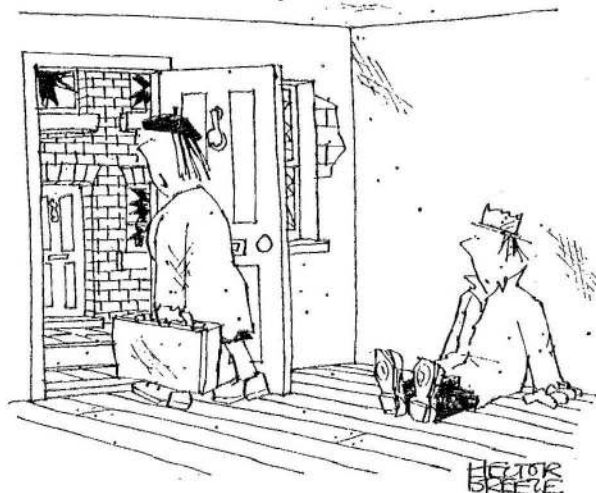
WHAT HAPPENS NOW ?

Certain issues have been recommended to council for immediate action, particularly issues relating to traffic management, tree planting and many street closures.

Shortly a public exhibition will go on display. This will be at the same time as larger meetings are called throughout the municipality.

See you at the one for Glebe.

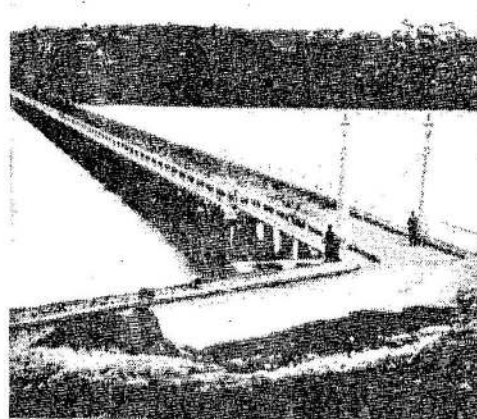
ACS



"And another thing, I'm fed up with waiting for this to become a fashionable district!"

CLAUSE 10 OF THE GLEBE SOCIETY CONSTITUTION

Any two members of the society may nominate another member for election to the management committee. Such nominations shall be signed by the two proposers and shall bear the written consent of the nominated member and shall be posted or delivered to reach the Secretary at least fourteen days before the annual general meeting except in the case of the first annual general meeting for which nominations will be accepted up till the time of election. The nomination shall include the address and occupation of the member. Notice shall be sent to each member before the annual general meeting of the names of the members correctly nominated. If insufficient nominations are received those nominations shall be declared elected and nominations for the vacant positions shall be called for at the annual general meeting.



Glebe Island Bridge, 1870.

Constructed in 1850, mostly of Tasmanian blackbutt timber, it was originally known as Blackbutt Bridge. The toll is 1/2d for pedestrians, 3d or 4d for horses or vehicles. The swing span, hand-operated by winch.



Theatre Parties

Our Theatre Party to the Royal Shakespeare Company's production of "A Midsummer Night's Dream" is a sell out with a group of over 70 members attending.

- * The next Theatre Party is to the Nimrod Theatre to see "A Hard God" written by Peter Kenna (who wrote "The Slaughter of St. Theresa's Day") and directed by John Bell. The play is centered around an Irish family settling down in Australia. Bookings, at \$1.50 per seat, should be lodged with Albert Renshaw, unit 14, "Ellan-gowan", Mary Street, Glebe - or ring him (during working hours) on 259 0454.

* on Tuesday, August 21st,

The Glebe Information and Referral Service has re-opened in the Glebe Community Care Centre (Balmain Annexe), 2a Hereford Street, Glebe, at the following times:

Tuesday evening: 7 p.m. - 9 p.m.
Thursday evening: 7 p.m. - 9 p.m.
Saturday morning: 11 a.m. - 12.30 p.m.

The service is staffed by volunteer workers from the Glebe area, who have undergone a training programme. Mr. David Maxwell, Area Director, Leichhardt Community Clinic, Department of Health is the Chairman of the Committee and Miss Anne Collier, Social Worker of the Glebe Community Care Centre is the Supervisor of the Service.

The Service aims to provide information and referral for people concerning social welfare agencies, community resources and personal problems. There are so many different agencies, both government and private providing help, that people find it difficult to know just where to start.

If you would like further information regarding this service you could contact:

Miss Anne Collier 660 7486/7791
Mrs. Elizabeth Hindmarsh: 660 6835
Mrs. Noeline Raymond: 660 6871 (after 4pm)

GARDEN GROUP

The next meeting of the Garden Group will be on Sunday 22nd July. We will be visiting the Stony Range Flora Reserve, a native garden owned by Warringah Shire Council and operated by the Society for Growing Australian Plants. A wide range of natives are on display and growing in natural areas and there are plants for sale.

Meet outside the gate in Pittwater Road Brookvale at 10.00 a.m.. If you can offer transport or need a lift please contact Andrea Robertson on 660 6149.

The August meeting will be held in a Glebe garden with the usual discussion and plants for sale. More details next Bulletin.

FOR YOUR DIARY

SATURDAY 24th NOVEMBER:

Note your diary for the date of the Annual Ferry trip. More details nearer the time.

TUESDAY 7th AUGUST:

SOCIAL ACTIVITIES GROUP meeting at Sylvia Ingall's, 9 Alexandra Road at 8 pm. All welcome.

SATURDAY 4th AUGUST

Coffee chez le President, 12 Lodge Street
10.30 am. - 12.30 (20c)

PLAY READING

We may possibly have a convenor for a play-reading group. Anyone interested please let Jeanette Knox know as soon as possible (660 7781)

RESIDENT ORNITHOLOGIST

Apart from the good old sparrows and pigeons on your list of Glebe's bird life, perhaps the gulls, starlings and bulbuls shouldn't be forgotten either. Also spotted turtle dove, and we're pretty sure we saw a pair of crimson rosellas earlier in the year.



Mrs Likel Shaw, has a grant from the Council for the Arts to set up a Silk-Screen Printing Work Shop in Ultimo Public School. This is held on Thursdays from 3.00 p.m. to 5.00 p.m.. The Council of the Arts has offered a small salary to a part-time assistant to Mrs Shaw. Interested people should write to Box 100, Glebe (the envelope marked "Attention Miss D. Perkins" or Phone 660 7623.

MEMBERSHIP

welcome to new members

Rick Cermak	Mrs L.J. Reuss
Karen McManus	Penny Ferguson
Mr & Mrs H. Raymond	Peter Stanbury
Frank Navin	Paul Petit



Les Tanner's Glebe

The following is from an article written for the Melbourne "Age" newspaper in late 1971 by Les Tanner, the cartoonist and author.

"..... I used to live in a Sydney suburb called The Glebe. Now a Glebe is a grant of land given by the Government to the Church. In this case it was the Church of England, and it was the original Glebe granted in the colony of NSW (which used to include everything from Queensland to Victoria - cop that, you Melbourne swine).

Somehow or other an enclave of Catholics gained a foothold (it used to be Cardinal Sir Norman Gilroy's diocese when he was a simple priest) and battle lines were soon drawn. The Catholics held the town council and the privileges thereof, the Protts owned the land, including most of the pubs (most ecumenical, considering most of the religious fights were held on C. of E. territory with a Masonic barman crying "fair play")

The children took turns outside each other's church chanting "Catholic, Catholic, (read Protestant) ring the bell, while the Protestant (read Catholic) goes to hell". About as original as strangulation. We couldn't do much with the Presbyterians or the Methodists as the Methodists were a mystery unto themselves and the Presbyterians had the Boys Brigade who believed in physical fitness and were likely to pursue hecklers, bagpipes skirling, and thump them.

There was a joss house. A small single-fronted ordinary house which had to be approached from the back to glimpse Oriental splendour and white slaves. We never found a white slave, drugged to mindless horrors of opium and the degradation confronting her. We did find the occasional retired market gardener who would wearily shout, "Buzz off, you kids, before I call the cops" (the only Chinese I ever learned).

So it was back to Protts and Tykes. The Church of England minister was a man of great frustration. Here he was in Australia's most historic parish and who was he preaching to? Us scruffs! He had the kind of vocal delivery which suggested that if the eyes were the windows to the soul then the rest of the house was closed for the season, except for the nostrils which were the ventilators of his spirit.

His climacteric came when on some anniversary or other the Governor of NSW visited the church. His Lordship sat in encrimsoned splendor (face and jacket), glittering like a brass foundry. The Reverend took for his text, "In my Father's house are many mansions" (the implication being no doubt, that in one of them they could sit down and have a nice cup of tea together).

His Lordship, sensing danger, waited for the plate to come around and with infinite grace dropped into it A WHOLE TEN SHILLING NOTE, rose to his feet and with vice-regal dignity got himself and his aides out of there before you could say Dunkirk.

The Catholics, being of the Irish persuasion, kept up a pretty tight front and played housie-housie on Friday nights and sold raffle tickets to each other. My father's family were rabid anti-Catholics as a matter of tradition and when he married my mother (a very nominal Catholic) the heavens rent and relations cooled around them.

I lost interest in religion. What was I - an anti-Catholic or anti-Protestant agnostic? I also lost interest in that until a couple of years ago I happened to look up my forebears. The first Tanner arrived here in 1845. He married and produced four sons. They were all Catholics and regular communicants. "

MISCELLANY

As Marie Webb will be away next year, Eve Goulay will be running our annual Flower Show. We look forward to the guidance of her knowledge and enthusiasm.

The Glebe Society is losing two of its most active and best liked members who are leaving the area.

Firstly, Geoff Page, who lent his expert engineering knowledge and experience to guide us through the complexities of that beast called "planning". If ever a hand was needed to build an adventure playground or other hard physical project, Geoff was always the first there in the morning and the last to leave at night. I doubt there will ever be a replacement for Geoff and Glebe is the poorer.

Vernon Winley is our other loss. When Vernon took over the Publications sub-committee a couple of years ago, the Bulletin was a sometimes thing much in need of the life Vernon was to breath into it. Not only did he ensure we got a Bulletin out nearly every month but encouraged the branching out into Monograph and other publications which have enhanced the Society's reputation throughout Sydney. If this issue is way out of date it is because we need a team of active people to replace Vernon (please ring 660,5996.....help).