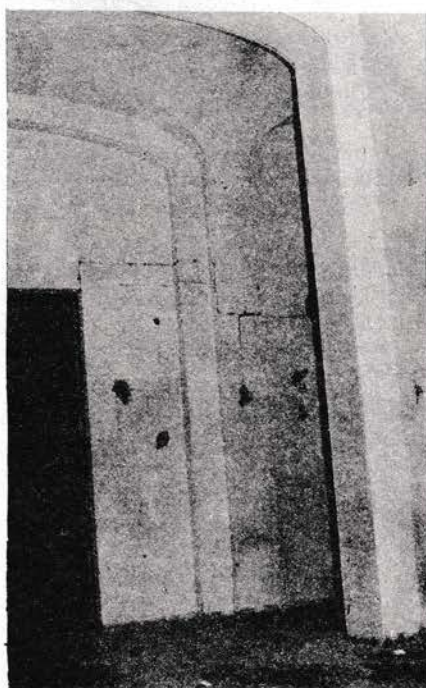
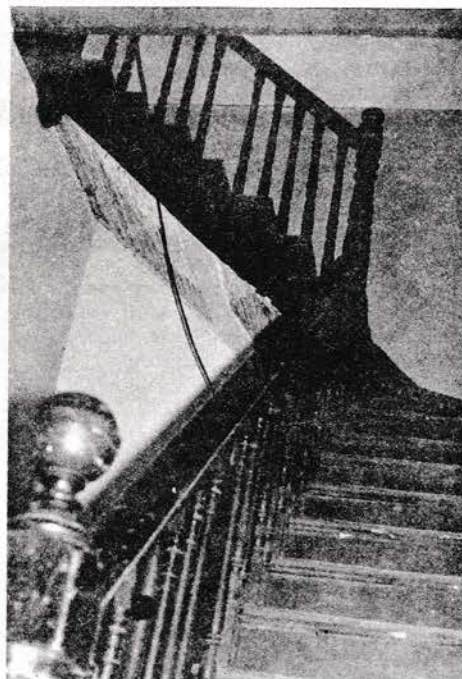
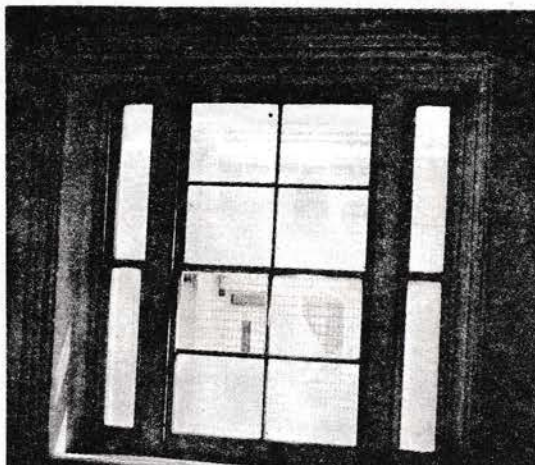


# THE GLEBE SOCIETY BULLETIN

MEMBERS  
PLEASE WATCH THIS  
SPACE; a cross  
means your sub. is  
due this month.  
Please post to  
The Treasurer  
P.O. Box 100,  
Glebe 2037.

No. 3 of 1972. Box 100, P.O., Glebe, 2037. Enquiries: 6605996 or 6606485.



1  
2 3  
4

In Bulletin No. 9 of 1971 we published a photograph of Lyndhurst in its prime - a picture which has since appeared in many other journals in this state. We bring you now four photographs of the interior of Lyndhurst in refutation of Mr. Morton's allegations that it is not worthy of restoration. 1. A window with its original architraves. 2. An interior arch with vaulted ceiling. 3. A side stairway. 4. A part of the cellars.



# EDITORIAL

1972 is a federal election year. The Glebe Society, of course, is not a political party and cannot endorse particular candidates. But it has the duty to raise issues connected with urban living that vitally affect the people of our community. And it has the further duty to ask what policies on these matters are proposed by the various parties contesting the election.

So set out below are some comments and questions which the Glebe Society Management Committee feels are important. We now want the views of other members, via letters to the Bulletin. In later issues we hope to be able to print a statement from each of the major political parties on the questions raised below and in the letters we expect to receive from you.

- . The Role of Local Government: what is the future of local government in this era of conferences to review the constitutional structure of Australia? Are we to get a true 3-tier system of federal/state/local administrations with a more equitable distribution of powers and responsibilities? Or change to a 2-tier system? Or Keep the present 2-and-a-bit-tier system where local government is the over-worked but ill-financed poor relation? What do parties intend to do about the situation where, in the last few years, federal debts have decreased, state debts have about doubled, while local government debts have risen nine-fold?
- . Education: what is the attitude to commonwealth aid to inner city schools to redress the balance of inequities in facilities and opportunities? While Glebe has some pre-school and child-minding centres, they are still inadequate; and primary and secondary schools struggle on against policies of helping the rich to get richer while the poor become poorer. On the tertiary level is there a need for federal money to help provide student accommodation close to universities?
- . Aborigines: what little federal activity under the newly-won powers to help Aborigines seems to be concentrated in the outback - but what is being done to assist Aborigines in the metropolises? Is there not a need for intelligent and sensitively-run programmes to help the more recently urbanised people to integrate (not assimilate) into the community in whatever way they want?
- . Migrants: is enough being done about teaching English, both to children and to adults? There also seems to be a need for some more comprehensive service to help migrants get to know the available social services, local facilities and day-to-day procedures.
- . Urban Planning: what support will the commonwealth give the states for properly integrated town planning such as the siting of container terminals away from the most congested residential areas?
- . Transport Systems: commonwealth grants for roads and expressways are made on a large scale; commonwealth loans for railways are much smaller and of course involve huge interest payments. What studies and set of priorities have decreed this imbalance? Does federal government prefer to see people using private rather than public transport?
- . Decentralisation: is it desirable to take the pressure of population growth off Sydney and allow improvement in the quality of urban life? What policies are proposed to achieve this effectively? What about federal incentives for removal of industries to towns?
- . Pollution: are air and water pollution purely state responsibilities? Is not noise pollution from aircraft a federal matter?
- . Foreshores: can federal money be made available for returning the harbour foreshores to the use of the people - west of the bridge as well as east?
- . History: where is a national policy on the preservation and restoration of historic and important buildings, by federal acquisition if necessary? What happens when the state is the demolisher?

---

## MONTHLY MEETINGS

The first Glebe Society Monthly Meeting for 1972 was an open forum discussion. Views were expressed on topics ranging from street tree planting to the State Government's new Local Government Appeals Tribunal. The issue receiving most attention was the need for a viable alternative transport system to the present expressway scheme. Some of the ideas first aired at this meeting have since received wide publicity through adoption by Leichhardt Council, and are being published as the Glebe Society's first Monograph.

The second Monthly Meeting, on February 9th, was devoted completely to expressways, with the Anti-Expressway Committee leading discussion on expressways in general, those proposed for Sydney in particular, alternative schemes, and proposed local action (which reached its first climax in the following Saturday's demonstration).

The third Monthly Meeting was held on March 8th and comprised a fascinating, illustrated talk by Max Solling, "The Crowded Years - Aspects of Life in Glebe from 1861 to 1891".

The April Monthly Meeting on 12th April will be the first meeting of the Social Involvement and Study Group, and on 10th May the Parks and Gardens Sub-Committee have arranged for Mr. Conley to give an informal talk and answer questions on gardening.

Attendance at each of the first 3 meetings has been about 20. Where are all those other clamorous voices who pressed so hard last year for a regular meeting of the Society to improve its sense of community? Is it that we should be serving coffee? or gin? or what?

Vernon Winley.



## WE ARE NOT PROSCRIBED

Last month the Glebe Society received a letter from Mr. P.B. Westerway, General Secretary of the N.S.W. Branch of the Australian Labour Party, asking that his letter to The Glebe (reprinted below) be drawn to the attention of our members. Assuming that "Glebe Association" refers to the Glebe Society, it is thus apparent that our members are not 'automatically liable to expulsion from the A.L.P.

"Sir,

Your story on the front page of the issue dated January 27, 1972, is wrong in almost every detail, including the headline: "A.L.P. staggers Rank and File with Witch-hunt."

To take only the most glaring inaccuracies:

1. The Australian Labor Party does not have rules "appear" in its Rule Book. Rule G.10, to which your story refers, is Rule 184 of the previous Rule book, word for word.
2. Neither this Rule, nor the resolution concerning it by our Administrative Committee, could possibly lead to "the expulsion of thousands of rank and file members." The resolution simply read:
  - (a) The Associations referred to do not fall within Rule G.10, but people who belong to organisations which sponsor candidates who oppose Labor candidates in Municipal or Parliamentary elections make themselves automatically liable to expulsion from the Party.
  - (b) The Rules Revision Committee be requested to recommend to State Congress a draft of an amendment of Rule G.10 widened to cover all organisations that sponsor candidates who oppose Labor candidates in Municipal or Parliamentary elections.'

Could you please inform the writer, and your readers, how a resolution that the Glebe Association, The Annandale Association, and the Balmain Association do not come under a rule which has been in the Rule Book for years can possibly be interpreted as a "witch-hunt"?

P.B. Westerway,  
General Secretary."

Letter to the Editor:

### PIONEER CONCRETE PLANT

Dear Sir,

Have you been down to the proposed site for the above during morning and afternoon peak hour traffic? There is a continuous stream of cars and trucks passing along Bridge Road near the Kauri Hotel at these times. For this reason I consider that the Department of Transport should bar the proposed development, which would aggravate the already hazardous conditions of traffic.

I.F. DARROCH,  
5 Sheehy Street.

## MEET MANAGEMENT

MARIE WEBB came to Glebe almost three years ago from leafy suburbia. She joined the Glebe Society at its inception and has enjoyed the outgoing friendliness of its members. As Convenor of the Parks and Gardens Sub-Committee she enjoys gardens with plants arranged in happy associations of colour and foliage. She would like to see more and more "corner-store" parks and is enthusiastically supporting the tree surveys and recommended tree plantings for the streets and parks of Glebe. She has an innate respect for all things living and is unhappy about the current practice of lopping street trees.

VERNON WINLEY: First got to know a little of Glebe as a student ten or so years ago; returned here to live, with wife and two children, two and a half years ago, after a sojourn in Fiji and another in Cremorne.

Originally joined the Glebe Society to buy its 1969 Christmas cards, but the whole family has since become embroiled in many of its other activities. Currently convenor of the Publications Sub-Committee, which largely means chasing things up for the Bulletin.

Born and bred a country boy, he really prefers city life, but would like a few more trees around. It seems many years since neither he nor Virginia were doing some university course or other (but never both at the same time - someone has to wash the dishes).

Interested in most things and issues - but mostly in people: and Glebe seems to be especially well endowed with a wide cross-section of them, but yet to have a much more developed sense of community than most parts of Sydney.

---

## MEMBERSHIP

Welcome to the following new members:

Mrs. J. Hart  
Mr. George Mackinolty  
Mr. Christopher Percival  
Mr. Allan Sorrensen  
Miss L. Knock  
Mrs. Sylvia Cross  
Dr. Patricia Spencer  
Miss E.M.C. de Borst  
Mrs. Pat Christesen  
Miss Margaret S. Bettison  
Miss Susan L. Petry  
Mr. & Mrs. R.D. Morrison  
Mr. & Mrs. John & Miss Ann Mackinolty  
Miss Sue Thomas  
Mr. Ian Wolfe  
Mr. & Mrs. L.J. Lacey  
Mr. & Mrs. M.S. Flynn  
Miss Audrey Grivas  
Miss Deidre Nairn  
Miss Beverley Purkis  
Mr. Eugene Newman  
Mrs. Josephine Collins  
Mrs. Christine Stevens



## TOTAL ENVIRONMENT CENTRE

Probably members have seen publicity about the recent formation of the Total Environment Centre, with prominent architect and environmentalist, Mr. Milo Dunphy, as its Director.

The T.E.C. was formed in response to the sense of alarm that is spreading through Australia at the damage being done to our continent and way of life by ill-directed development. Its aims, broadly, are to obtain, co-ordinate and publicise expert information on the environment, what is happening to mar it, and what can be done to halt such deterioration - and then to organise and help individuals and groups striving to care for the preservation and improvement of our environment.

We in Glebe must enthusiastically welcome the advent of the T.E.C. in its role of strengthening existing bodies that are fighting for conservation and against pollution, for sensibly planned development and against urban congestion and ugliness. In particular it is an independent and prestigious body that can help to alert people to potential blights to urban life and to mobilize public opinion to correct them before it is too late.

The T.E.C. urgently needs two things: offers of the services of people with expertise in fields likely to be useful in the work of the T.E.C., and financial donations. To give either of these, or obtain further information about the T.E.C., contact Tony Strachan (660.3374) who is one of the Trustees.

## FOR YOUR DIARY

Saturday, 8th April: SAVE LYNDHURST COMMITTEE EMERGENCY FUND RAISING PARTY. \$1 per head and B.Y.O.G. 8 p.m. at the Potters', 8 Gottenham Street.

Wednesday, 12th April: MONTHLY MEETING takes the form of a meeting on social involvement and action in Glebe - at Glebe Town Hall in the Old Council Chambers (walk in the front door and continue through and turn left under the stairs). At the moment a lot of social research is going on in the Glebe area, and opportunities are opening up for our own social involvement. At the April 12th meeting speakers will discuss the social character of the Glebe area, outline research which is currently being conducted, and opportunities for social involvement. So if you're interested in knowing more about the social character of Glebe or particularly in becoming involved in social action yourself... then please come - 7.30 p.m.

Thursday, 13th April: SOCIAL ACTIVITIES GROUP MEETING at the Colmans', 48 Boyce Street, at 8 p.m. All welcome.

Saturday, 15th April: "BACK TO LYNDHURST" NIGHT. (For details see Miscellany.)

Sunday, 23rd April: VISIT TO OLD GOVERNMENT HOUSE, PARRAMATTA. Party to assemble at the gate at 10.30 a.m. This National Trust property has recently been restored and is well worth a visit. Charge for admission, 80c. Children under 14, 25c. One child admitted free with each adult. If you would like a lift to Parramatta or if you have room to spare in your car, please ring Maureen Colman, 660.4824.

## MISCELLANY

When work commenced on the Sydney Opera House there were development sites suitable for car parks in the Circular Quay East, Macquarie Street Wedge.

The State Government watched the wedge slowly fill up with huge office buildings till now, when it has decided a car park will be needed and the only place to put it will be parkland. Give a fig for Sydney!

The Save Lyndhurst Committee has extended an invitation to Glebe Society members to attend the "Back to Lyndhurst" night at Lyndhurst on Saturday, 15th April, at 8.00 p.m., carriages at 10.00 p.m. Dress: black tie or period. Contribution: \$5 per double. Note that this invitation is for members of the Society and specially invited guests only. Phone 660.1604 or 660.7041.

The plans for the Moore Park Olympic complex are to be deplored. They represent a further attempt to break down the parkland/private home buffer around our city.

Anti-expressway buttons are available through the Society. Cost 20c. Phone 660.5996.

A small group in California have dedicated themselves to the preservation of odd hillsides, wandering creekbeds and such. They call themselves SWAP (Small Wilderness Area Preserves). What would they have thought of the change of zoning of the Lombard Street parkland reserve to Industrial (in the middle of a residential area) because it was not level enough?

If you know of a potential new member please let us know so that we can drop a complimentary copy of the Bulletin in their letterbox. Phone 660.5996 or 660.3529.

Lip-service? The Department of Decentralisation and Development have their offices in Macquarie Street, Sydney.

The inaugural meeting of the Chippendale Society was held in Darlington School Hall at 8 p.m. on Wednesday, 1st March, 1972. A constitution was considered and adopted and elections held. The meeting was addressed by Alderman Andrew Briger of the City Council and Sam Conl representing the Glebe Society. The Deputy Mayor of South Sydney was also present and spoke briefly. We have the Chippendale Society's support against the proposed expressway system and wish them every strength and success.

Saturday, 6th May: COFFEE MORNING at the Tzannes', 14 Avenue Road.

Wednesday, 10th May: MONTHLY MEETING at Glebe Town Hall organised by the Parks and Gardens Sub-Committee with Mr. P.G. Conley of the Royal Horticultural Society to speak and answer questions.



# For People Who Care About Music

The Music Broadcasting Society of NSW is for people who believe that existing broadcast music programmes are inadequate. Its principle aim is to establish a listener-owned co-operative broadcasting station devoted exclusively to serious music programmes. As the recent government enquiry into Frequency Modulation broadcasting indicated, there is considerable demand for the improvement of existing services.

## WHY AN INDEPENDENT SERIOUS MUSIC STATION?

Classical music is broadcast for an average of 6½ hours or less out of the 150 hours which Sydney's radio stations broadcast each day: that is, less than 5% of all broadcast time. An independent music station would improve this situation and, in addition, would provide a choice of programmes where at present there is none.

## IS SUCH A MUSIC STATION POSSIBLE?

Specialist stations of this type operate successfully overseas, supported entirely by member-subscribers who receive a detailed monthly programme guide. The stations themselves carry no advertisements, and few programme announcements. Subscription costs are no more than those for the average top-class magazine.

## WHAT IS THE MUSIC BROADCASTING SOCIETY DOING?

- o By surveys, and by attracting a large membership, it aims to show the authorities that there is substantial support for the idea of an independent music station.
- o In cooperation with similar organisations in other states, it is seeking a licence to broadcast, and a special frequency allocation.
- o It is setting up the framework of an organisation to run the station when a licence becomes available.
- o It is supporting the campaign to introduce Frequency Modulation broadcasting to Australia, because of the higher quality and freedom from interference inherent in that system.

## WHY JOIN?

In joining, you are showing the authorities that you want more music to be made available to the public, and you are helping the Society make a positive attempt to bring this about. Membership of this Society places you under no obligation to become a shareholder when the station commences broadcasting. Make your voice heard by joining NOW.

.....  
To: MUSIC BROADCASTING SOCIETY OF NSW  
Box 176, The Union, Sydney University, Sydney 2006

- ☐ I would like more information about the Society.
- ☐ Please find enclosed the sum of \$ ..... (at \$1.00 per membership) for the following (attach list if necessary):

NAME	ADDRESS
.....	.....
.....	.....

*A stamped address envelope for reply would be appreciated.*