

16 August 2024

Council of Sydney

[dasubmissions@cityofsydney.nsw.gov.au](mailto:dasubmissions@cityofsydney.nsw.gov.au)

Attention Lauren Collard

Re: DD/2024/509 1-7 Bellevue Street, Glebe

Dear Ms Collard

The building is a Contributory item in the Lyndhurst Heritage Conservation Area. It was built by the Roman Catholic Church in 1899 and dedicated to St Ita who was born in Ireland in 470. St Ita is said to have *excelled in the 'Six Gifts' of Irish womanhood - wisdom, purity, beauty, music, sweet speech, embroidery.*

It was a multi-purpose building being used for Mass on Sundays and as a school on weekdays.

The application states that *window frames are timber sash which do not appear to be original as no stained glass remains.* As it was primarily a school and needed good natural light, the windows in the body of the building were probably always clear glass and they may have always been sash windows in order to facilitate cross ventilation. The sanctuary, where the altar was located was at the end of the building abutting number 11 Bellevue Street. This may have had two stained glass windows which were removed before the church sold the property in 1991. This may account for why the two window openings at the sanctuary end of the building have been bricked up.

The Glebe Society makes the recommendations set out below in respect of the application.

### **Roof**

Originally the roof was slate. The concrete tiles are obtrusive. The proposal is to replace them with Colorbond standing seamed metal roofing. It is claimed that this would *be more sympathetic to the slate and corrugated metal roofs of the neighbouring properties.* It is not sympathetic and would be more obtrusive than the concrete tiles. The ideal would be to replace the concrete tiles with slate but if expense precludes this the roof should be replaced with galvanised corrugated steel roofing which is the contemporary equivalent of late 19<sup>th</sup> century galvanised corrugated iron.

Figure 1 below shows the roofing materials of the five houses facing the former St Ita's Church/School in Bellevue Street. Number four retains its original slate roof, number two (which was built as a pair with number four) has had its slate roof replaced with concrete tiles. number six is galvanised corrugated steel and numbers eight and ten are Colorbond corrugated steel. There is no seamed metal roofing here or in the neighbouring properties. Galvanised corrugated steel is preferred to Colorbond corrugated steel because it resembles a traditional material widely used in Glebe and does not fade as Colorbond roofing does. If colorbond corrugated steel is used it the colour selected should be as close as possible to the

colour of galvanised corrugated steel. This would be in accordance with the recommendation in the Lyndhurst Heritage Conservation Area Inventory Report to *encourage the recovery of the original character during renovations and building upgrade.*

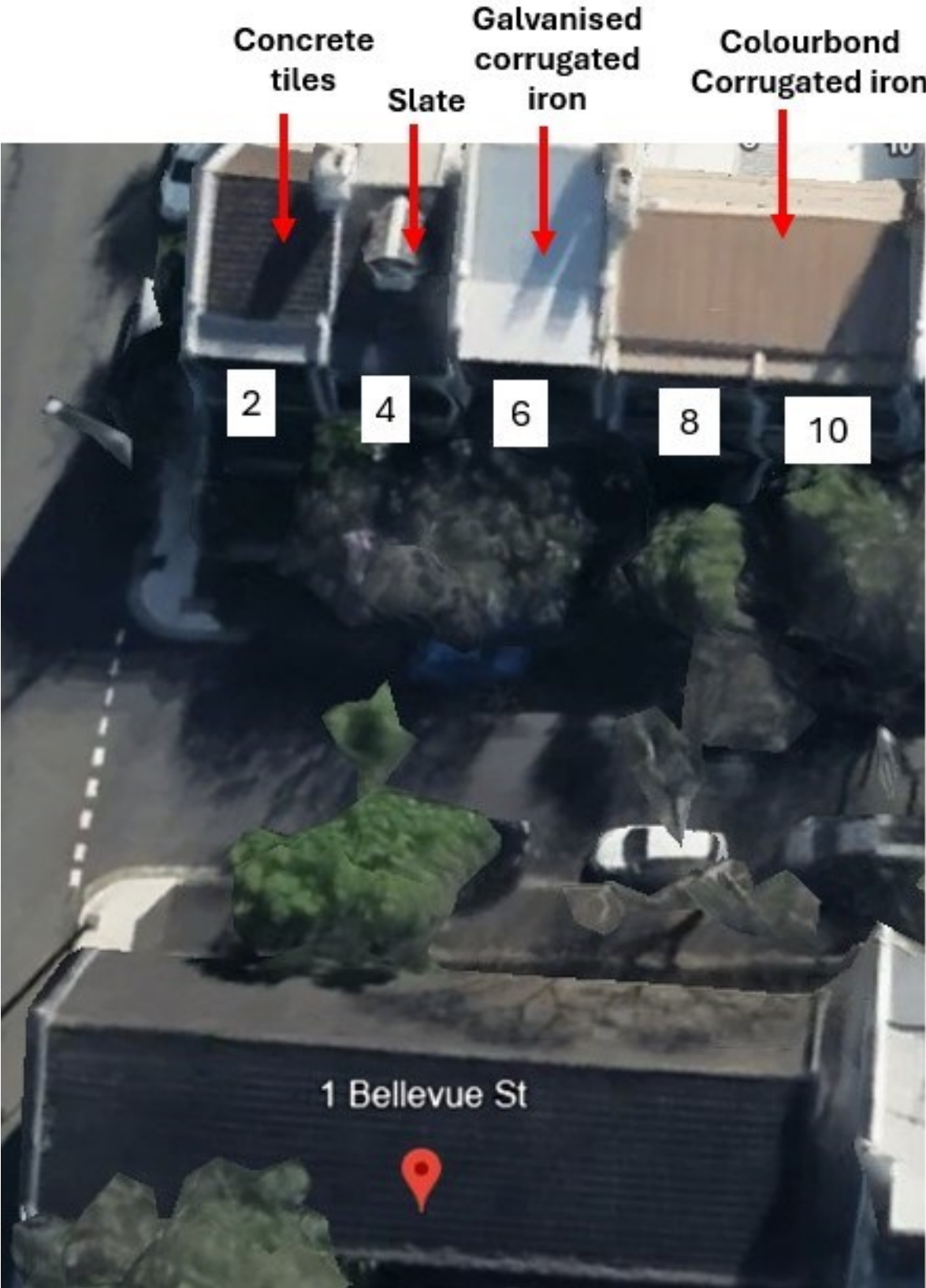


Figure 1 A survey of the roofing materials of the houses across the road from 1 -7 Bellevue Street.

### The Door D2

The proposal involves removing an original door with its decorative hinges and removing the original transom with its three glazing bars. This is contrary to the claim in the HIS that *no demolition of external fabric is proposed*. These elements are important and should all be retained.



Figure 2 Door D2 is an original door which retains its elaborate Gothic revival hinges. The transom window above is also original

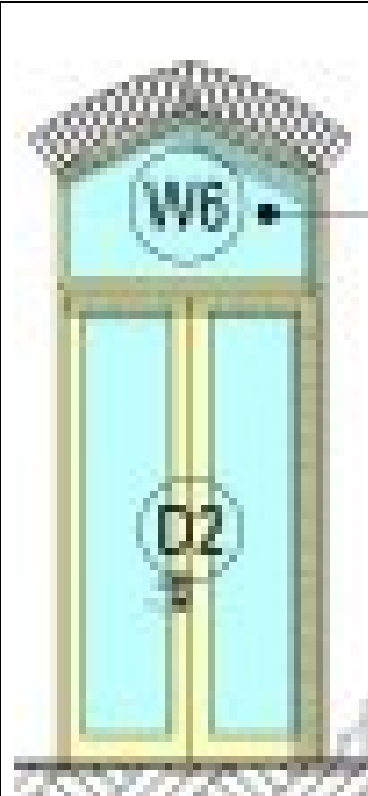


Figure 3 The proposal is to remove both the transom, the door and the hinges



Figure 4 A detail of one of the original hinges

### The Roof Structure

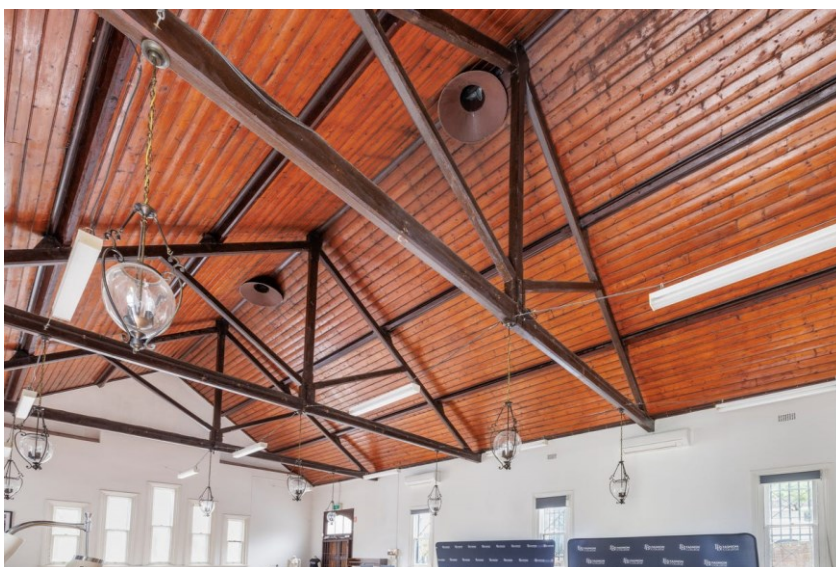


Figure 5 The original roof is very intact. The linings appear to be Baltic pine





*Figure 6 The roof in the existing mezzanine*

It is important to retain the existing roof, for its materials and structure and for the original volume of the space to continue to be legible.

### **The Porch**



*Figure 7 The proposed porch and ramp*

The proposed porch presents as a very dominant element on the eastern façade. It also draws attention to the ramp and collectively they are very incongruous.

If the porch was deleted the ramp would be less prominent. The eastern elevation is visible from the public domain as it adjoins a park.

## **Recommendation**

The Society recommends that:

1. Galvanised corrugated steel be used for the roof, or Colorbond corrugated steel of a colour which is similar to that of galvanised corrugated steel roofing, rather than the proposed colour bond standing seamed metal roofing
2. The existing door at D2 , its decorative gothic revival hinges and the transom above it to be retained
3. The porch on the eastern elevation be deleted

Duncan Leys

President