



03/2026
May 2026
ISSN 1836599X

We acknowledge the Wangal and Gadigal people of the Eora nation as the traditional owners of Glebe and Forest Lodge and pay our respects to elders past and present.

From The Acting President

By *Duncan Leys*

As I'm sure members appreciate, The Glebe Society is an outstanding example of a long-running, effective and highly credible community organisation. We can all be proud of The Society's contribution to our Glebe today. The Society's work is undertaken by volunteers and I want to thank the many members who organise our Walks and Talks programs and other events. Participation in these programs illustrates how much they are appreciated.

In two recent talks, one on Glebe's Pubs and the other on the Glebe Town Hall (the People's Place) we set out to encourage non-Glebe Society Members to attend and we were successful.

Here's my call to you today – we need more volunteers. We have in mind another 3 to 5 talks which we want to put on in the same format, encouraging non-members and members to meet in a social setting and to entice new people to join the Society. Ultimately we might find a few who want to volunteer to help run the Society.

We share many challenges in Glebe and Forest Lodge in common with our neighbours in Pyrmont and Ultimo, along with other City of Sydney suburbs and council areas across The Inner West generally. These issues include: greater housing density; more affordable and public housing; better and more accessible public transport access; and provision of more green space to meet projected population growth. Addressing these issues involves greater collaboration between various groups and with the NSW Government and the City Council.

Help is needed to undertake research and write submissions to put our community's interests to government, argue proposals and protest when we are being ignored or our views are not being taken seriously.

Of interest to the Inner West and a pointer to relevant issues is the report commissioned and published by the NSW Government on the future of the Bays West Precinct. There is the [full report](#) which provides a comprehensive overview and a [summary report](#), shorter and to the point, which contains details such as a tentative commitment to restoration of the old Glebe Island Bridge, made possible by exporting commercial enterprise to White Bay, though how the New Fish Market ferry will be handled is not explained.



Bays West artist's impression. NSW Government web site.

An artist's impression of the Bays West Precinct site shows many of the main features. Absent from the impression would appear to be substantial public access to the foreshore & very limited greenspace on the foreshore.

If you can volunteer in any way, please contact me. I would be very grateful for some new faces to help our team continue the good work.

Best regards
Duncan Leys ●

Also in this issue:

From the President	1
Fascination House	2
News From the Blue Wrens	3
Walks and talks	4

Who lived in your street?

Fascination House 115-117 Glebe Point Road

By Lyn Collingwood

What's happening with Fascination House has been fascinating Glebe locals for decades. Why does the landmark building on the corner of Miller Street and Glebe Point Road remain forlornly empty? Facebook followers surmise its private owner has no interest in or need for finding a tenant. While the property's present state is a mystery, its history is not. The structure, which probably sits on an underground watercourse, has been a grocery, pawnshop, antique store and government offices.

EDWARD CARR FORTESCUE

A grocer who sometimes hyphenated his last names, Edward Fortescue was the building's first occupant. Born in London c. 1834, the son of John Fortescue and Louisa Lucy née Carr, Edward was living in Glebe with his wife Ann by 1858.

Faced with bankruptcy in the 1860s, Edward Fortescue had an emergency sale of his shop fittings and grocery stock (his creditors included prominent Glebe wholesaler John Bardsley) but was allowed by the Insolvency Court to keep his furniture. He looked for buyers of his anti-polluting baking oven: Fortescue's Patent Smoke-Consuming Furnace. In response to an anonymous letter threatening to attack him at night, Fortescue warned in a press notice that he always travelled 'prepared'.

By 1866 Fortescue had moved the address of his home and grocery from Mitchell Street to the main road. The corner building was numbered 93 Glebe Road until 1898 when the address was fixed at 115. Here, Fortescue & Son sold groceries, colonial wine, pipes and tobacco.

SCHAMES (SHAMUS) MORRIS

A prominent member of the Sydney Jewish community, Shamus Morris was a founder and president of the Hebrew Relief Society. In 1912 he established S Morris & Sons stationers at number 115, replaced by S Morris & Son fancy goods the following year. During their short tenancy, the family lived on the premises.

WILLIAM COWEN

The next occupiers of number 115 traded in the building for four decades. An English immigrant

who gave his profession as 'financier', William Cowen opened his pawnbroking shop there in 1914. Over time, the business changed names: Cohen's Pawn Office, Mont de Pieté, Wentworth Loan Office. Long-term neighbours at number 117 were confectioners and pastrycooks.

FASCINATION HOUSE

The building was named Fascination House by the late 1960s when it was occupied by an antique dealer who was also a craftsman carpenter. Numbers 115-117 Glebe Point Road subsequently became the headquarters of the Commonwealth Glebe Project and a NSW Department of Housing office where tenants paid their rent. After the site went into private ownership, 35 formal objections were lodged in 1998 in response to a proposal to convert it into a hotel with an underground carpark. The Development Application was refused.



115 Glebe Point Road at far right, 1953. Image: City of Sydney Archives

Sources: City of Sydney Archives; Glebe Society *Bulletin* 4/1986, 10/1998, 3/2018; National Archives of Australia; NSW cemetery records; NSW electoral rolls; NSW Registry of Births, Deaths and Marriages; Sands *Directories*; thegristfamily.org; Trove website.

Read Lyn Collingwood's [full article](#) on our website. ●

News from the Blue Wren Subcommittee

More blue wren sightings in Glebe!

By Judy Christie and Andrew Wood

Judy Christie, organiser of the Society's annual spring bird survey and leader of the Orphan School Creek bushcare volunteers, reported on the 29 March: 'This afternoon about 4pm on a lovely sunny afternoon I saw a male and female Superb Fairy-wren in the Federal Park mangroves in Rozelle Bay. They were there for some time then flew west to a patch of lantana and presumably moved around the foreshore of Rozelle Bay towards the wetlands of Rozelle Bay Parklands where they have been seen regularly. It's the time of year when young birds disperse so worth looking out for them on sunny days this autumn.'

These are classic stepping stone movements for wrens which have been absent from Glebe for most of the last 10-15 years. As the Society's submission to the City suggested ([Proposed Updates to the 2014 Urban Ecology Strategic Action Plan](#)) more mangroves in particular, could create more habitat stepping stones.

Professor Dieter Hochuli from the School of Life and Environmental Sciences at the University of Sydney commented: 'That's a wonderful observation to support the creation of small habitat plots to help make the urban matrix more navigable for a lot of urban fauna. It will be interesting to see if the Rozelle Parklands might be the source. It's becoming increasingly urgent to look beyond boundaries for different local government areas to manage the landscape effectively.'

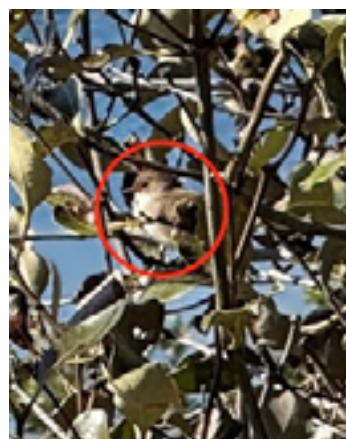
It is more than 20 years since mangrove seeds collected from Olympic Park were planted by the City on the foreshore of Federal Park. We certainly did not expect that such a now well-established waterfront site could provide a safe habitat for wrens.

Then, further wrens were seen at low tide by other members of the Orphan School Creek bushcare group on the 4th (Kim Hague-Smith; 3 wrens) and 9th April (Caroline Lipovsky; 4 wrens) – probably it is the low tide that brings the birds to the mangroves as they were not seen at high tide.

The President has written to the Lord Mayor ([President's letter](#)) saying that 'The City can take credit for its foresight in re-establishing the mangroves in Rozelle Bay. Restoring biodiversity sites in the middle of a large city is time consuming and complex – we congratulate the City of Sydney on such a successful outcome!' ●



A non-breeding male wren at low tide in the Federal Park mangroves in Rozelle Bay (photo: Caroline Lipovsky)



A non-breeding male wren in the mangroves (photo: Judy Christie)



A wren feeding in the grass adjacent to the mangroves (photo: Kim Hague-Smith)

Glebe Society Talks and Walks coming up



Explore Waverley Cemetery

Thursday 21 May

9.15 am–12.45 pm

Led by Max Solling

Bus from Old Fire Station on Mitchell Street

Bookings: <https://explore-waverley-cemetery.eventbrite.com.au>



Join us in exploring one of Sydney's oldest, most beautiful and most historic locations – Waverley Cemetery. Heritage-listed and poised on the cliff-tops at Bronte, this Victorian and Edwardian gem is sited in one of Sydney's most striking locations, the cliffs between Tamarama and Clovelly, overlooking the glittering Pacific Ocean.

Guided by the always-expertly-informed Max Solling, we'll visit the final resting places of many prominent Australians including Henry Lawson, Dorothea Mackellar, Fanny Durack, Victor Trumper, Henry Kendall, Carla Zampatti and others, many of whom have a surprising link to Glebe. The cemetery is also famed for its imposing memorial of the 1798 Irish Rebellion, noting that tragic history from Michael Dwyer to Bobby Sands.

A bus has been arranged that will leave from and return to the Old Fire Station on Mitchell Street.

NOTE 1: parts of the cemetery are fairly steep and quite uneven (some sealed roadways, mostly uneven grassy paths). Please wear appropriate walking shoes and bring water, sunblock and a hat.

NOTE 2: this event will go ahead only if we have enough attendees (15) to cover the cost of the bus etc. The Walks Team looks forward to having you join us!

Tour the Sydney Heritage Fleet (SHF) Shipyard on Rozelle Bay



The Kanangra at the Sydney Heritage Fleet shipyard (image: SHFleet)

Sunday 21 June

10 am - 12pm

Led by Alex Byrne, Sydney Heritage Fleet volunteer
Meeting place: SHF Shipyard, Gate 4/13 James Craig Road, Rozelle

Bookings: <https://tour-heritage-shipyard.eventbrite.com.au>

This tour organised for the Glebe Society takes us through the Fleet's extensive maintenance and restoration facilities, looks at the Fleet's other vessels, then goes on board the ferry Kanangra to hear her history and view the restoration currently underway. Kanangra was built in Mort Bay in 1912 and carried nearly 1000 passengers mostly on the City to Mosman and Cremorne route from 1912 to 1987. Kanangra's superstructure is timber drawn from the lumber yards which used to surround Rozelle and Blackwattle Bays. This is an opportunity to view at first hand the history of this part of the working harbour, and the work of the SHF's many hundreds of volunteers in preserving and restoring our maritime heritage.

Requirements:

Closed-toe shoes

Sufficiently mobile to walk around the Shipyard and to climb steep stairs onto *Kanangra*.

Cost: \$25 (Glebe Society members, \$35 non-Glebe Society members).

Note: Cost covers contribution to Sydney Heritage Fleet which charges for its tours to "Keep the Fleet Afloat"

Mystery Photo

By Wayne Carveth

April 2026 Solution



The April Mystery photo was of the war memorial in Foley Park close to the completion of the restoration propelled by Max Solling, (the late) Dr Bill Nelson and others and completed by The City of Sydney Council. The photo, taken by Ted McKeown, shows Bill Nelson observing a woman planting rosemary at the memorial in 2014.

Lyn Collingwood reminded me that Glebe has two war memorials, the other more modest First World War Memorial for servicemen being in the grounds of Glebe Public School accessible from the footpath in Derwent St. There are around 300 names engraved, presumably of former students of the Glebe Superior Public School.

This month's mystery photo



When and where is this and what is the significance of the graffiti?

Please send your suggestions to history@glebesociety.org.au with 'Mystery Photo' in the subject line.

This month's In Focus photo competition

By Mary Regan



Reflections of the past 2 by Stephen Foster

This month's winner is Stephen Foster's 'Reflections of the Past 2', showcasing as a band across the middle the distinctive roofline of the Tramsheds, clouds above and below, amid the lushness of the greenery. Congratulations Stephen and thanks for sending your photo.

We are very keen to see entries from more people. The prize for the photograph judged the overall winner for the year is two free tickets for one of next year's Glebe Society Guided Walks or a Glebe Talks event. The winning photograph will be published in the first edition of the *Bulletin* next year.

The closing date to be featured in next month's Bulletin is Friday 15 May.

Send your photos in at any time to photo-comp@glebesociety.org.au.

To make sure your entry has a chance to be featured, make sure it is a high-resolution image, with all details as clear as possible.

You can check out the rules on our website: <https://glebesociety.org.au/in-focus-photo-comp-rules/>



Fishing in the bay by Caroline Lipovsky

GLEBE EATS

By Karen Ginn

In the past the Glebe Society has organised monthly events at Glebe and Forest Lodge restaurants to promote community and to support local restaurants. And perhaps now is the time to reinvigorate this activity.

You and your friends are invited to the first 'Glebe Eats' event, to be held on **Tuesday June 30** at **Lahore2Delhi**, 131 Glebe Point Road, Glebe, beginning at 6pm. There will be a set menu, designed to be shared, at a price of \$50 per head, to be paid in cash on the day. The menu will include vegetarian and non-vegetarian options and you can bring your own beer, wine and soft drinks. Soft drinks will also be available for purchase at the restaurant at additional cost.

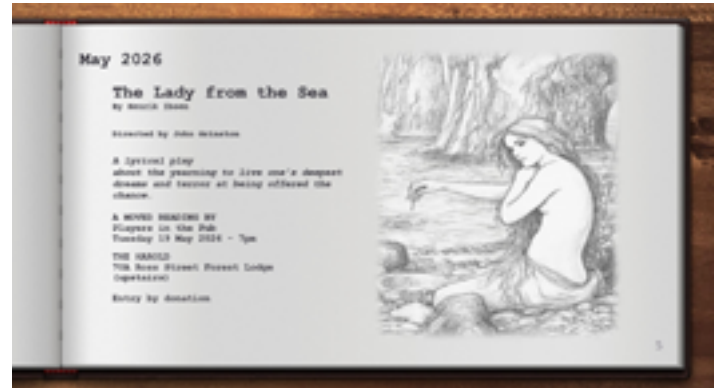
Please RSVP to glebeeats@glebesociety.org.au by Sunday June 21 so the restaurant can be advised of the number of people who will be attending. As the maximum number that can be accommodated is 30 people, book early so you are not disappointed. Members and non-members are welcome.

Upcoming dinners have also been planned for the last Tuesday of each month – the next ones are on Tuesday 28 July at Thai on Wok, 94 Glebe Point Road and Tuesday 25 August at Otto Noorba, 79 Glebe Point Road. Details of these will be advertised in the *Bulletin*.



Players in the Pub

From Lyn Collingwood



The Lady from the Sea

By Henrik Ibsen

Directed by John Grinston

A lyrical play about the yearning to live one's deepest dreams and terror at being offered the chance.

A Moved Reading by Players in the Pub

Tuesday 19th May, 7pm

THE HAROLD,
70A Ross Street, Forest Lodge
(Upstairs)

Entry by donation

This year's Glebe Music Festival in November

By David McIntosh, Director



Image: supplied

This year's 37th Annual Glebe Music Festival will run from 6 to 22 November 2026 with a series of six concerts at several venues in Glebe. For details see www.glebemusicfestival.com

The first concert will feature Ermanno Brignolo on solo guitar. He describes it as 'A musical journey through the notes I played and wrote for my daughter while she spent her first month of life in the intensive care unit.'

Book through [TryBooking](https://www.trybooking.com) or tickets will be available at the door. Full price \$20, concessions \$10 (includes food/drinks).

Friday 6 November, 6pm

Gleebooks, 49 Glebe Point Road

The programme will include:
Ermanno Brignolo (1981)
From 'Impressions from Grace'

Agustín Barrios Mangoré (1885–1944)
La Catedral

Mario Castelnuovo-Tedesco (1895–1968)
From "Platero y yo", op 190

Johann Sebastian Bach (1685–1750)
Chaconne from "Partita n. 2" BWV1004

For your calendar

May		
15	Friday May	Deadline for photo competition for June <i>Bulletin</i>
16	Saturday May	Annual Glebe Book Sale, <i>Benledi, 186 Glebe Point Road</i>
19	Tuesday May	Players in the Pub, <i>The Harold, Wigram Road</i> 7pm
19	Tuesday May	Deadline for contributions to June <i>Bulletin</i>
21	Thursday May	Guided Walk: Explore <i>Waverley Cemetery</i> 9:15am
June		
21	Sunday June	Guided Tour: Sydney Heritage Fleet Shipyard, <i>Rozelle Bay</i> 10am
30	Tuesday June	Glebe Eats, <i>Lahore2Delhi, 131 Glebe Point Road</i>
July		
23	Friday July	Special Glebe Music Festival Concert, <i>Margaretta Cottage, 6 Leichhardt Street</i> 7pm
November		
6 - 22	Friday Sunday	37th Annual Glebe Music Festival, <i>various venues</i>

Management Committee

See our website for details on how to contact the Management Committee, subcommittee convenors and other contacts.

glebesociety.org.au

Membership

To join or renew, please

- ▶ complete the [Membership Form](#) on our website, or
- ▶ contact the Secretary on secretary@glebesociety.org.au
- ▶ choose Individual, Joint, Household, Concession or Corporate membership

The Glebe Society Inc, PO Box 100, Glebe NSW 2037

Community Pantry Donation Drive

From Duncan Leys and Hamish Lewis (for Kobi Shetty)

The office of Kobi Shetty MP, Member for Balmain, runs a pantry of essential items for people in need. Increasing demand for this service means that we are on the lookout for any donations that can support the pantry.

Some popular items include rice, pasta, tinned soups, peanut butter and coffee, but we can accept a variety of non-perishable products or toiletries, so long as they are still in date.

If you are able to make a donation, you can find our office at 201-205 Glebe Point Road.

Thanks for looking out for people in our community doing it tough.

JOIN US FOR OUR

COMMUNITY PANTRY DONATION DRIVE

Drop off donations at Kobi Shetty's office, 205 Glebe Point Rd, Glebe

All donations go to Kobi Shetty MP's free community pantry, supporting local people doing it tough.

Authorised and Printed by Kobi Shetty MP using parliamentary entitlements. Printed April 2026 on 100% recycled paper



Book Glebe Society events through our [Eventbrite](#) page

Views expressed in this Bulletin are not necessarily those of the Glebe Society Inc. Articles and photos submitted for any of the Glebe Society's publications, including the website and Bulletin, may also be used in the Glebe Society's other publications unless otherwise agreed.