

THE ORIGINAL ROAD SHOW (Rpt.)

A few months ago The Glebe Society and similar groups throughout Australia sent telegrams to members of the Federal Senate urging their support for the Roads Grant Act (1974) which would give the Government some determination in the construction of freeways in inner-urban areas.

The Roads Grant Act was heavily amended before being passed on 17th September 1974 but the clauses relating to urban freeways were approved by the Opposition and control given to Canberra.

Eight days after the passing of this Act, Sir Charles Cutler gave orders to the D.M.R. to move into Fig Street Ultimo with bulldozers, chains and police to pull down buildings in the path of the North-Western Expressway - a project specifically condemned by the Australian Government in the Bureau of Roads Report of 1974.

This was no ordinary demolition. The methods of demolition were against all safety regulations. The timing was obviously spurred by Canberra's new powers and to provoke a State/Federal conflict. It was also an attack on the Builders' Labourers' Union who have a Green Ban on the Expressway and have plenty of other worries to distract them at this time.

There had not been any large protest meetings or demonstrations against the North-Western Expressway for some time and it was probably thought that the issue had "cooled". The reason for the apparent quietness on the issue was because of the support our arguments were gaining from both transportation experts and politicians. We really thought that it was only a matter of time before the expressway was stopped. All over bar the shouting - but the shouting had to come -.

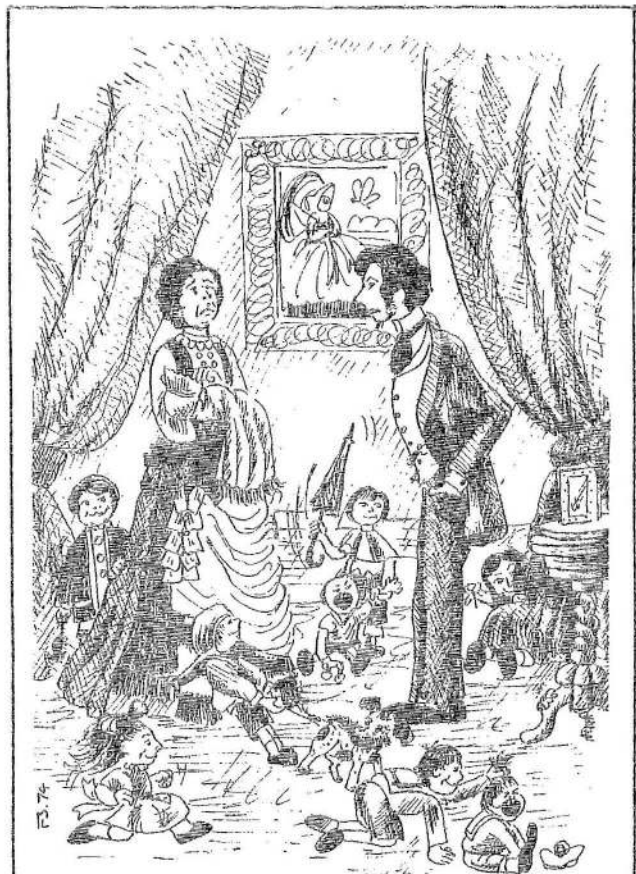
The Glebe Society's attendance on the site was quite pleasing but much credit must go to the Inner Sydney Resident Action Groups (I.S.R.A.G.) and in particular Mark Harris for his level-headed control of the demonstrations. We must also thank those people who had the moral and physical courage to actually resist the demolition.

We should not dismiss the unpleasantness of Monday 30th September as "adventurism". If it were not for these people, we would probably be still watching the buildings fall - and in Glebe as well as Ultimo -.

We hope and pray we do not have to have

a repeat performance of the "Fig Street Fiasco" in Glebe but we are confident that all members of The Glebe Society realize the necessity of the Ultimo action and will show as courageous a resistance if the bulldozers arrive on our own doorsteps.

Albert Mispel.



Wife of freeway planner (who has just presented husband with ninth child): "This house is far too congested. I'm fed up with forever tripping over children."

Freeway planner (with air of infallibility common to his profession): "Worry no more my dear. The problem is easily solved. I shall have the hallways widened."

Valete

Over the three years of the last Leichhardt Council, the Glebe Society saw many of its original aims either fulfilled or brought close to fulfilment. The very fact of being able to work with Council instead of against it not only made for an enormously more pleasant atmosphere, but also assisted greatly in the generation and implementation of ideas. Whereas formerly Glebe was, in effect, zoned for progressive demolition, it now has an effective conservation zoning based on the latest town planning ideas.

Glebe generally owes much to the two very dedicated and hard working outgoing Aldermen, David Young and Eric Sandblom, and they deserve the warmest possible thanks of this Society.

Tony Strachan



Salvete

As members will know the recent Municipal Elections saw a change in the composition of Leichhardt Council and of the Glebe Ward Aldermen. Our new aldermen are the endorsed Labor Party team, Ivor Cawley and George Millard. Both have a long association with the area, although neither has previously been on council. Both are members of the Glebe North Branch of the ALP and Ivor Cawley has been its Secretary for some years. He is involved in a wide range of activities in Glebe; for example he is on the Board of the Homeopathic Hospital.

We welcome them and look forward to co-operation with them on matters of concern to citizens of Glebe, whether it be in vocal opposition to the North-Western Expressway or in studied consideration of plans for development of the Glebe.

Jim Coombs.

SOCIAL CLUB OR SOCIAL CONSCIENCE?

In the last year the question of our social role, and our commitment to the overall well-being of the people of the Glebe has been an issue that has exercised the minds of our Management Committee. We could see that our wine and cheese parties were not fully meeting a role of social concern. Two members of the Society, Secretary Alan Robertson and Kathy Mispel were already on the Committee of the Woolley Centre, an after school and holiday leisure centre (creative) for the children of the area. The Centre was launched in a shop front location during the last year.

In the meantime a number of members had become involved with the obvious plight of the children in the Child Welfare hostels in the Glebe, Bidura (infants and girls) with the Depot behind and Royleston (boys) both fronting on the lower end of Glebe Point Road. These children are withdrawn from all normal contact with society through very little, and generally no, fault of their own. Anything that anyone could do to establish contact with them - by taking them out, especially, could only be to the good. At Bidura as much loving care as can be given is essential, as the staff there have as much as they can do to keep the place running and help is clearly needed. So a number of members have gone into the home at weekends to play with the little children (Julia McConnochie 660.7605, Alison McKeown 660.3917 and Patsy Kennedy 660.6162 and Ros Jackson would all welcome help).

Plainly this situation is not to be tolerated, however worthy our motives. It is the State's responsibility to care for these children, and sufficient qualified caring staff should be available to do the job. The Child Welfare Act as it stands is almost Dickensian in its content - the longest Section is on punishment! Reform is needed. After much pressure the Minister for Youth and Community Services announced a review of the Act. The Glebe Society made one, written by Julia McConnochie and Jim Coombs. We now await the first proposals of the Committee of review.



THE COMMUNITY SCHOOL IN GLEBE

LETTER TO THE EDITOR

The Education Department has recently been seeking the community's views on its involvement in schools. And yet its proposals amount largely to shifting some administrative burdens from the Department to the proposed school Boards.

The Glebe Society feels that this Community involvement should mean that the local community and the school - parents, friends and their children and teachers - should come into closer contact. The highly centralised system of education seems to withdraw all truly local content from the life at school. As a means of changing this the Society has made a start by having the co-convenor of the History Group speak with the children at Forest Lodge Public School.

This is just a start. We await ideas from anyone who can spare time at the two schools to give the children an understanding of their own local culture. We are anxious to hear from anyone with ideas (ring Jim Coombs 660.0026).

What about a greyhound trainer?



Sir,

Timber Discharge-Blackwattle Bay

The Australian Chamber of Shipping recently published a report on congestion in the port of Sydney undertaken in conjunction with the Cargo Movement Co-ordination Committee which was formed last July to advise on port development.

It may be of interest to members to know that one of the problems studied by the Chamber was the discharge of timber, the import of which is expected to increase in the near future.

Part of the Committee's recommendation was that "a suitable area for timber/wood discharge should be provided in the port where timber can be discharged direct to a wharf...."

It went on to recommend that the site for the provision of timber discharging berths direct to shore should be Blackwattle Bay, thus necessitating a decision on the future of the Glebe Island bridge.

I feel the Glebe Society should be aware of this move, not because of timber vessels in the Bay but because of problems associated with huge timber transports in the narrow streets.

Hopefully the Chamber's recommendation will not be acted upon, but perhaps this could be monitored by the Society.

Alyson Witts, (Miss)

P.S. I have a copy of the Chamber's Report should this be required for reference.

THE GLEBE SOCIETY, P.O. BOX 100, GLEBE, 2037. Phone 660 0026

Annual Subscriptions: Ordinary \$2; Household \$3; Student 50c; Pensioner 50c.

MEMBERS PLEASE NOTE: A RED CIRCLE HERE MEANS YOUR SUBSCRIPTION IS NOW DUE.

MEMBERSHIP FORM

I wish to (commence (renew) membership of the Glebe Society.

NAME

PHONE

ADDRESS

I enclose cheque/postal note/cash for for my annual subscription as an ordinary/household/student/pensioner member.

FOR YOUR DIARY

Sunday, 20th October, 8 p.m. "ART AND THE COMMUNITY". A lecture will be given by Maurice Shaw, Architecture lecturer and force behind the "ZUZZA BWOOGA" at Glebe primary school. Maurice worked in New York, U.S.A., among underprivileged groups using community art projects. He will show slides of his work and discuss the WOOLLEY CENTRE.

Wednesday, 23rd October, G.A.S., (which is not the NAKED ENCOUNTER GROUP), otherwise known as the Glebe Amateur Society, will be reading "The Fire Raisers" by Max Frish at 42 Toxteth Road. We begin promptly at 8 p.m. If you want to see how really amateurishly a play can be read then make sure you turn up. And, anyhow, what sort of a landlord would allow his tenant to store 44 gallon drums of fuel in the attic?

Sunday, 27th October, 8 p.m. A chamber music evening at Grahame Budd's, 5 Allen Street. Maurice Shaw (wearing his other hat as a member of a professional chamber music group) has arranged this, and it is hoped donations will be received for the Woolley Centre. Please bring your own cushion.

Saturday, 2nd November, 10.30 a.m. Last month's arrangement for the Wargenau's was postponed to this new date. Come and discuss Glebe's current crisis at No. 1, 75 St. Johns Road - St. John's Village - from 10.30-12.30; coffee and biscuits 20¢.

Saturday, 9th November, 11.30 a.m.-5 p.m. FERRY TRIP FERRY TRIP (see details elsewhere in this Bulletin).

Wednesday, 13th November, 8 p.m. The History Group meets at 23 Avenue Road, and the topic is Glebe in the Depression years.

Saturday, 7th December. A merry Christmas party is planned, to be held at the Fowlers'. Note the date in your diary.

WEEKLY

Mondays, 10.30 a.m. Crochet group meets. Ring Kate Smith for details (660.1824)

Sundays, 9.00 a.m. Tennis at Pidcock Street, Camperdown Courts. Ring Max Solling (Wk: 2.0545 ext. 306 or home: 660.1160) if you would like to play.

MISCELLANY

It is expected that the Glebe Society submission to the National Trust will shortly be presented. Evidence will include material from Bernard & Kate Smith's book and the Townscape map which was the subject of a planning meeting of the Society recently.

Anything to declare?

The Editor of the Glebe Society Bulletin is Ted McKeown. Would all copy be directed to him at 10 Albert Street; phone 660-3917.

CONTEMPLATING RENOVATIONS ?

Contact the Society's Committee for comment and advice:-

Tony Strachan - 660.3374 or
519.3393 (Bus.)

Alan Robertson- 660.6149 or
2.0512 (Bus.)



A FERRY TRIP

The annual aquatic event - the ferry trip - will leave Glebe Rowing Club at 11.30 a.m. on Saturday, 9th November. Tickets are \$2.00 adult, \$1.00 child, 50¢ pensioner, \$5.00 for a family ticket.

We are hoping to take some children from "Bidura" and "Royleston", so if you are interested in looking after a child for the afternoon do let us know. It would mean providing lunch for the child, and tickets are free in their case.

DO ORDER YOUR TICKETS NOW. Ring Hillary Larkum 660.7030 or Kathy Pickles 660.4924 and reserve your seats.

The ferry is lots of fun so come along.