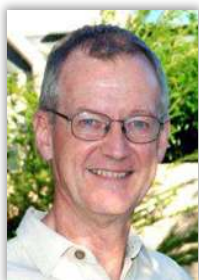


Invitation to the Glebe Society's 46th Annual General Meeting

**Sunday 30 Aug 2015 11am–1pm
Glebe Town Hall**

All members of the Society, and especially new members, are cordially invited to attend the Annual General Meeting of the Society at Glebe Town Hall, St Johns Rd Glebe on Sunday 30 August at 11am.

In addition to the usual business activities of the AGM, we are pleased to announce that there will be an address by Ms Monica Barone, Chief Executive Officer of City of Sydney. There are a number of issues that she may cover that would be of relevance to attendees, including council amalgamations and the challenges of maintaining heritage protection in an era of straitened finances. We are very fortunate to have Ms Barone attend our AGM, and I look forward to her address.



Note that in the previous Bulletin we stated that the AGM starts at 2pm – this is incorrect. It starts at 11am.

*Are you considering nominating
for the Glebe Society
Management Committee?
Please do!*

Office bearers of the Society and other members of the Management Committee will be elected at the AGM and members are warmly encouraged to consider the benefits of active involvement in your Society. The positions open for election are President, Vice-President Treasurer and Secretary, as well as five other member positions. Nominations will close on 23 August.

Please get in touch with me (president@glebesociety.org.au) to discuss your interest in joining the Management Committee and to learn more about what is involved. We will be happy to provide information about the Management Committee and our very active subcommittees, which are open to any member to join. A nomination form is available on our website at <http://www.glebesociety.org.au/wordpress/wp-content/uploads/GS-committee-nomination-form-2015.pdf>

Ted McKeown,
President

Agenda for AGM

1. Welcome and acknowledgement of country
2. Apologies
3. Minutes of 2014 Annual General Meeting for confirmation
4. Treasurer's report for 2014-2015
5. Subcommittee reports (including questions on reports already published)
6. President's report
7. Election of Management Committee for 2015-2016
8. Guest speaker, Ms Monica Barone
9. Close of meeting & refreshments

Community Matters

Community Notes by Janice Challinor

'The Dirty Red Digger'

On a wet and windy Saturday 4 July a small audience enjoyed this amazing pastiche performance at the Glebe Town Hall. The Griffyn Ensemble, Canberra's premier Chamber Music Group, under the artistic direction of composer, anthropologist and mandolinist Michael Sollis, told their story in music, song, archival film, contemporary videotaping and recitation. It combined the 'unlikely bedfellows' of music, football, history and social politics to explore what was happening in Australia during WWI, and compare pressures facing Australians, both then and now.

The title comes from the name of the first Rugby League club formed in Australia in 1908. This Glebe club was known as the *Dirty Reds*, therefore it was fitting to have the ensemble's Sydney performance take place in Glebe. 'Team Griffyn' included Susan Ellis, soprano, Kiri Sollis, flute, Chris Stone, violin, Laura Tanata, Harp, Holly Downes, double bass and was lead by Michael Sollis who wrote, or sourced and arranged, all the music. The performance included WWI era pieces such as *What do you think of the Kaiser?* Chas. Vaud (1915), *Rest Soldiers Rest* by Arthur Morley (1916), *Daddy's in the Firing Line* by Chas. Ridgeway and Roger Cameron (1916), *Pearls and Savages* by Frank Hurley and Emanuel Aarons (1921), *Is 'E an Aussie?* by Flotsam and Jetsam (1930) and more recent works like *Green Fields of France* by Eric Bogle (1976), and Michael Sollis's own compositions *Heartbeat*, *Origins of Football*, *The Digger's London Leave*, and *Conscription*.

This performance was a fitting adjunct to the many WWI commemoration events taking place in Glebe this year, and for many heritage-minded Glebites, an experience unfortunately missed.

NAIDOC Week in Glebe

'*We all stand on Sacred Ground*' was the theme of this year's NAIDOC celebrations which took place on the ancestral homelands of the Gadigal people of the Eora nation from 5 to 12 July. The week of events began with a Sunday social gathering, church service and BBQ at St John's Anglican Church where the unveiling of the Scarred Tree plaque in the grounds was a fitting way to pay respects to Elders past and present. It was followed by a dinner, film and discussion night at the Glebe Town Hall on Monday 6 July. The chosen film, *BabaKiueria*, a classic mockumentary on the colonisation of Australia led to some lively discussion. On the Wednesday, NAIDOC hosted

an Elders Lunch at the recently dedicated Aboriginal Cultural Space at Glebe TownHall, while Thursday saw a women's craft and pamper day take place there, followed by a '*Talking Country*' workshop led by Heather Goodall and local Elders on the Friday. On Saturday the *Corroboree* took place at the Glebe Youth Service, showcasing some very talented young performers. A very cold and windy Family Day at Glebe Public School, and the Aboriginal History Tour on Sunday 12 July rounded off the week's activities, with the tour featuring some recently rediscovered information concerning Aboriginal trade unionists from Glebe.

NAIDOC in Glebe has grown to encompass a full week of activities over the last few years and has, in the process, become a great opportunity for all of Glebe to celebrate together. It is a very inclusive event. Estimates of crowd numbers at the major events such as the *Corroboree* and Family Day were around 300 to 400.

At the July committee meeting the Glebe Society considered becoming a sponsor of the 2016 NAIDOC week in Glebe. This could include advertising NAIDOC events through the Glebe Society website, as well as some limited monetary support for printing the week's program. The Glebe Society's involvement could also provide an opportunity for sharing information such as the upcoming discussion on the *Recognition* debate being planned by some NAIDOC committee members and local Elders at the Glebe Town Hall later this year.



Chilly winds couldn't deter people at the smoking ceremony and sacred fire. (Image: Janice Challinor)

Friends of Centipede

The sole purpose of this *Friends* group, commenced under the auspices of the Glebe Society, is to raise much-needed additional funding

for *Centipede*. As most *Bulletin* readers will already be aware *Centipede* is a not-for-profit Before and After School Care Centre that also provides breakfasts and dinner, educational programs and holiday activities for children aged 5-8 years who attend Glebe Public School. Most of these children (70%) come from the Glebe Public Housing estate, including many from disadvantaged homes where total dependency on Centrelink for income means fees are often beyond their family's reach, yet *Centipede* doesn't turn people away. It is built on the very real understanding that early childhood support can lead to improved learning outcomes and greater autonomy in later years.

The long serving and much respected manager of *Centipede*, Kim Payne, is leaving this year. All those who'd like to farewell him as he heads off to New Zealand to pursue a new career are invited to gather at the Harold Park Hotel at 6.30pm on the evening of Friday, 7 August to do so. A replacement manager is currently being sought.

Additionally this year the annual 'thank-you to Friends of *Centipede*' *Sunset Soiree* will take place at the Glebe Rowing Club on Friday 9 October. Please put it in your diary now. It promises to be a pleasant and enjoyable evening, during which the draw for a major Raffle prize, a hand-made queen size quilt donated by an award winning quilter, will take place.

Your assistance in selling raffle tickets prior to the event would be most welcome, as would any help you may be able to offer in preparing for the *Soiree*. Please contact me by email, community@glebesociety.org.au or mobile 0401 505 657 to purchase tickets, take a book or two to sell or to offer assistance in preparing for the event. Open arms await you!

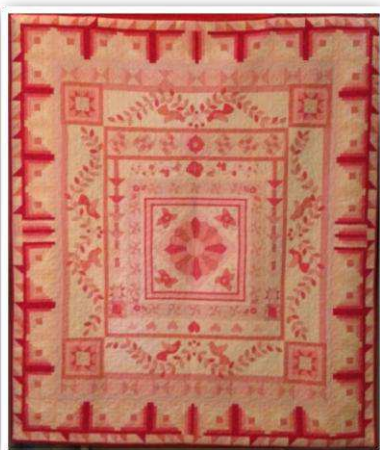
Janice Challinor
Community Development Convenor

Raffle for 'Centipede' at Glebe Public School

This **Hand-made Queen-size Quilt** by Ellie Edgar, an award winning quilter from Port Macquarie, is **valued at \$2800**.

The raffle will be drawn on 9 October 2015 at Centipede's '*Sunset Soiree*', Glebe Rowing Club, Ferry Rd, Glebe.

Tickets cost \$2 each



To purchase tickets or to take a booklet of 20 to sell please contact Janice Challinor on community@glebesociety.org.au

All raffle proceeds will go to **CENTIPEDE at GLEBE PUBLIC SCHOOL**, which supports children aged 5 - 8 years, most of whom come from disadvantaged backgrounds, with before and after school care, breakfast, dinner and holiday programs.



FRIENDS OF CENTIPEDE has been supported by the Glebe Society since 2004

The Naming of Dave Sands Lane

On Sunday 26 July a large number of people gathered at 27 Broughton St, Glebe for a ceremony to celebrate a well-known Australian sportsman. The champion boxer, Dave Sands was

honoured when the nearby lane was named in his memory.

Dave Sands, whose original family name was Ritchie, was born on 4 February 1926 at

Burntbridge, Kempsey. He was the fifth child of George Ritchie, a timber cutter and rodeo rider of mixed Aboriginal and European descent, and his Aboriginal wife Mabel, née Russell. He and his five brothers all became boxers, following in the footsteps of their father and their maternal great uncle, Bailey Russell, a noted bare-knuckle fighter.

Dave was a very successful boxer, becoming the Empire Middleweight Champion. He moved to Sydney to further his career and spent considerable time in Glebe, training at the Golden Gloves Gym (Lamings Gymnasium) located on Glebe Point Rd. A plaque, erected on the 80th anniversary of his birth on the corner of Glebe Point Rd and Parramatta Rd is easily located.

Unfortunately Dave Sands was killed in an automobile accident in 1952 and didn't get the opportunity to contest the Olympic title. If you would like further information on this great Australian please use these links: <http://adb.anu.edu.au/biography/sands-david-dave-11611>; <http://www.deadlyvibe.com.au/2007/11/david-sands/>.

His grandson Chad Ritchie, together with Fiona Smith, the NAIDOC chairperson, was largely instrumental in organising the lane naming event, at which Dave's three children, Lillian Manton, Dave Ritchie and Donna Hickey were in attendance. A smoking ceremony was an integral

part of the event, and amongst the speakers who eulogised Dave Sands and his contribution to Glebe was well known Glebe resident and Deputy Lord Mayor of Sydney, Robyn Kemmis. It was a fitting tribute to Sands and his importance to the whole Glebe community.

Janice Challinor
Convenor, Community



Australian boxer Dave Sands with his manager, Tom Maguire, Sydney, ca. 1950 (Image: National Library of Australia)

Liz Rooney – a tribute

Elizabeth Mary Rooney was the first secretary of the Glebe Community Gardens. Liz and Jean Sankey, who passed away a few years ago, worked tirelessly to find a site for a community garden.

On first impression Liz might have appeared fey and 'other worldly', but not so. The archives of her first endeavours reveal a sharp mind and an ability to negotiate with bureaucrats to secure grants from Council and assets from the local businesses. It is an interesting read to see the correspondence tossed between Liz and various government bodies. Determined and convinced of purpose to involve the local children, mainly indigenous, in a garden project, Liz finally found a site belonging to St Johns Anglican Church, beside Record Reign Hall.

Paul Angell became the treasurer and speaks highly of Liz and her connection to the garden. For Paul she was invaluable in resolving disputes between the old guard and the new. That groundwork can be seen today in that our garden is one of the few in which there is no fighting and with a deep appreciation of its foundations.

Paul made the comment that he and Liz did not always agree. She was passionate about native plants and also had ideas which were not as simple as first thought. The Rose arch was one and had to be had at all costs. Liz didn't realise all the approvals and architectural designs required to satisfy the Church and the Council. Liz again was determined and Paul had no choice but to install it.

Joe Mannix OAM, aka The Blind Bishop, was a member of the garden during this early period. With Liz and Paul, he organised the memorial plaques we have in the garden today. Like Paul, Joe had a very deep affection for Liz.

In the community, Liz was involved in the Glebe Youth Centre, the school and the mural to commemorate Elsie's Refuge.

Derwent St and other local centres are bereft now that she is no longer with us. It feels that the community is deeply wounded and the scars will take a long time to heal. She leaves behind a loving family and the Glebe Community Garden sends them our condolences. Vale Lizzie.

Margaret Teague

Report on the New Members' night

New members were warmly welcomed to the Glebe Society at the Harold Park Hotel on July 22, a chilly evening. Introductions and reconnections were made over drinks, then eating and more drinking around tables where the challenges began!

An intriguing list of statements about the Bays Precinct – true and false – challenged everyone to pick the lies. The many veterans of Glebe demonstrated an incredible depth of knowledge about the history, local characters, changes over the centuries, and future plans for this area on our doorstep. Some new members seemed astounded at this level of detailed knowledge displayed, and the enthusiasm for challenging all comers to verify diverse facts and figures. Others of us just sat back and enjoyed a drink while taking in the spectacle.

Lorel Adams

Events Coordinator



*Hard at work on the 'Bays Precinct: Believe it or Not!' Task
(image:Laurel Adams)*

Planning Report

Commonwealth Bank, 201-5 Glebe Point Rd

As previously reported, the representations of the Society have been successful, and the revamped building on this site is again proposed to house a Commonwealth Bank, employing six people. There will also be ATMs. However, this time the bank will be smaller, and there will be four dwellings on the upper floor.

Harold Park

1A The Crescent (Tramsheds): A number of businesses (mainly cafés and restaurants) have been approved for the Tramsheds, but outdoor seating has been approved for a trial period only, during which any complaints will be monitored. At the end of this period a new application will be considered. The Society will discuss with Mirvac the need for continuing consultation.

Precinct 5: Following representations from the Society and a request from Council planners, Mirvac amended this last block fronting The Crescent to increase solar access and cross-ventilation for a number of apartments, with further conditions imposed by Council. The proposal is also required to address the parkland along Johnstons Creek. All Mirvac buildings have now been approved.

The final building on the Harold Park site will be for 50 affordable housing units on a 5000 square metre site near Wigram Rd. This site will not be developed by Mirvac, but will be handed over to the City, who will arrange for a community housing organisation to supervise the project.

Federal Park Childcare

This attractive 80 place centre, designed by Perumal Pedavoli (Peru Perumal is a former Glebe Society president and planning convenor) has been approved with improved pedestrian access and a detailed landscape plan of native plantings.



The location of the proposed childcare centre on the Crescent in Federal Park. (Image: City of Sydney: <http://sydneyyoursay.com.au/childcare>)

10 Bridge Rd

This proposal for a five storey residential development in the small industrial belt opposite Blackwattle Secondary College has been withdrawn.

Durham Court, 417 Glebe Point Rd

This application for 12 townhouses has been re-notified, but as far as I am aware the only changes are those related to shoring up boundaries for the benefit of neighbours.

Neil Macindoe
Planning Convenor

History & Heritage

Rearview: Interview with Elizabeth Fletcher

Rearview is a project undertaken by the Heritage Subcommittee, with the purpose of capturing the memories of long-term residents of Glebe. We realise it is important to record and archive this precious social history. For this occasional series, various residents will be interviewed, and short articles published in the Glebe Society Bulletin.

This month, Margaret Cody chats with Elizabeth Fletcher.

Elizabeth and John Fletcher lived in Glebe for 42 years, since 1973. Before that, Elizabeth was a student at St Scholastica's Boarding School in the 1950s. Elizabeth's earliest adult memory of Glebe is of a suburb full of boarding houses and ramshackle buildings.

Her best memory is of the Angelus bell ringing at noon and dusk at St Scholastica's convent. The street where she lived then, Toxteth Rd, is the street where she lives now, in a house which was built in 1894. In 1994 she gave her house a 100 year birthday party with cake, 100 candles, and a jazz band. Changes in the street include 'posher' houses and emptier streets, because everyone is at work paying for their posh houses. There are fewer boarding houses and fewer interesting people.

What she misses is the absence of horses from Harold Park exercising in the local streets and park. She used to scoop up their manure for her garden and misses that!

Changes include greater wealth in Glebe and fewer poor people. Houses that were once decaying dumps have now been gentrified and cost two million dollars. There are fewer students because there are fewer boarding or shared houses.

Elizabeth recalls some colourful characters: 'my husband used to volunteer with the St Vincent de Paul Society and look after homeless people. He found a man sleeping in a local park, took him to get some clean clothes from the St Vincent de Paul depot, brought him home for breakfast and then took him to his own home. Checking his food supply, my husband opened the fridge and found it completely full of beer, but no food. There was also a very large, tall woman known as 'The Amazon', who with her very small partner produced a very small baby. One day she mounted the local bus, holding the baby, her head almost touching the ceiling of the bus, and declared: "Which of you b....'s is going to give me a seat?". Never have so many men moved so fast to offer a seat.'

What Elizabeth misses most is the former rose garden down in Jubilee Park near Hilda Booter Kindergarten. She also misses the experience of a full church on a Sunday morning. The things she welcomes are central heating, especially in an old house with high ceilings, and neighbours she has known for a long time.

Margaret Cody



Who lived in your street? William Pell Sharpley (1898 - 1992)

In 1952 self-styled 'Wandering Poet' William Pell was staying at 109 St Johns Rd when he penned his six-stanza 'At Sunset on the Nullarbor', expressing a mixture of admiration and nostalgia at Trans-Australian Railway's move to new technology:

*Today the Diesel takes the track,
She's swift and up-to-date,
But in my mind is carried back
Along the line dead straight
The thoughts that linger of the past,
The Memory and the Dream
Of when I made the journey last,
And came this way by steam.*

By 1959 Pell had moved to Rooty Hill to be closer to his employment as a Water Board labourer working on the construction of the Warragamba Dam. To mark its opening he penned another salute to the modern age:

*So when you turn the water on
Just pause a while to think
Of how the project was begun
So you could have a drink
And how you have that extra power
In your electric lights
That comes to you at any hour
From Warragamba's heights.*

William Pell and his brother Leonard Pell (ca 1901-83) arrived in WA in 1908 aboard the *Persic* with their parents Glasgow-born Anne née Bryson (1870-1921) and Dublin-born William Pell Sharpley (1861-1925) who had married in Croydon England in 1895. They lived near Albany at Torbay Junction before settling at Grassmere where William senior took up farming. Trained as an analytical chemist, he returned to England during the First World War to help manufacture munitions. Back in Australia he was a member of the Torbay-Grassmere Drainage Board and took an active interest in politics before his death on 27 December 1925.

During the 1930s William junior lived in Gippsland Victoria before moving to rural NSW then Sydney. He travelled around England and the Continent, married in Scotland, and by 1963 was in Brisbane. He died aged 94 on 13 August 1992 at Bridgeman Downs. His verse appears to have been published only in newspapers.

Number 109 St Johns Rd was number 31 until ca 1905 when the road subsumed Denman St. The two-storey house (five rooms plus kitchen with basement entry) dates from ca 1896. Its first occupants were accountant Aubrey James Vickers (1849-1914), his wife Maggie Susan (1849-1938) and their daughters Margaret Elizabeth, Mabel Louise and Alice Maud. Aubrey was born on 16 January 1849, the fifth son of Belle Isle Jamaica sugar plantation owner Benjamin Vickers and Elizabeth née Shilleto. Benjamin died in 1877, his widow in the mid-1880s; by which time Aubrey had migrated to Australia with his wife and eldest daughter and settled in Glebe where Mabel and Alice were born in 1881 and 1885 respectively. Elizabeth Vickers divided her estate among seven of her children, making no provision for Aubrey, the plantation passing to his eldest brother. However, Maggie and her two younger daughters were bequeathed £300 by another of Aubrey's brothers in 1923.

Aubrey Vickers died on 2 July 1914, and his widow at Cremorne on 25 October 1938. Both were buried in Waverley Cemetery. Margaret, who married George Thomas Flood in 1900, died in 1956 at Chatswood. Mabel and Alice, an artiste, died unmarried in 1959 and 1970 respectively.

After Aubrey's death the family's effects, including a horse and cart, were put up for sale and the house advertised for rent. Occupants of 109 St Johns Rd in the interwar period included seaman William Francis Lister; joiner Andrew Allan Foote;

Cecelia and Edmund Gale, labourer; and Florence Margaret and Henry George Lewis Bridgland, ambulance driver. During the 1930s it was the home of caretaker Edwin Chapman Henderson and his family.

When Glebe Society member Ian Edwards bought the house in 1969 it was one of hundreds in Glebe slated for demolition by the Department of Main Roads to be replaced by expressways. Back then Glebe wasn't a café society (there were a couple of Chinese eateries and that was about it) but there were plenty of shops selling basics at Forest Lodge and near neighbour 103 St Johns Rd was still the old-fashioned family grocery it had been since 1896. Its last owners were Dorothy Ann and Reginald Alfred Harris who allowed customers to run up big tabs. Dot sliced cold meat by hand, climbed the high ladder to fetch stock from the shelves and provided free babysitting (including jelly babies) while Reg leaned on the counter, gossiping with locals taking a rest on the Arnott's courtesy chair.

Lyn Collingwood

Sources: *Albany Advertiser* 6.1.1926; *Nepean Times* 28.4.1960; NSW cemetery records; NSW electoral rolls; NSW online registry of births, deaths, marriages; personal knowledge; Q cemetery records; Q electoral rolls; *Sands Directories*; Vic. electoral rolls; WA online registry of births, deaths, marriages; *West Australian* various issues including 12.1.1926.



109 St Johns Rd, once home to 'Wandering Poet' William Pell (image: Phil Young)

Welcome new members: Edward Hanna, Stuart Heldon, Diane Hutchinson, Christine Jeffress, David Lewis, Ana Moleman, Sijmen Moleman, Tracey McCann, Leanne O'Reilly, Hannah Robinson, Patrick Tegart, Alex Tyrrell and Jean Williams.

Callan Park: Compassion and Conflict in the Asylum

Friends of Callan Park and Oral History NSW are launching the publication *Callan Park: Compassion and Conflict in the Asylum* on Saturday 1 August 2-4 pm at Sydney College of the Arts.

Following the recent exhibition of the same name for the National Trust's Heritage Festival, such was the interest and curiosity about the stories of the people who were patients at Callan Park – or lived on site or worked its wards – that Friends of Callan Park decided to publish the exhibition panels together with linking pages which set the context.

Professor Paula Hamilton will launch *Callan Park: Compassion and Conflict in the Asylum*. Professor

Hamilton is President of the Oral History NSW, recently retired from UTS and a local resident who has been a great supporter of the local community, particularly with her engagement through oral history.

I do hope you might be able to attend this day. The book will be available – \$10 (or a copy can be mailed out \$15 including P&P). If you are able to attend it would be helpful if you could RSVP to focp.admin@gmail.com

Roslyn Burge

Glebe, Naturally

News from the Blue Wren Subcommittee by Andrew Wood

Sophie Golding, Urban Ecology Coordinator, City of Sydney attended our meeting on 30 June 2015 and we congratulated her on her excellent presentation on the results of the Society's 2013 and 2014 spring bird surveys to the Regional Landcare Bushcare Forum on 15 May 2015 at the Royal Botanic Gardens. Sophie reported that the City is planning to facilitate and organise events in the local government area during October 2015 to enhance the awareness of birds, and to promote bird surveys and events to help children learn about the City's birds. This year's survey in Glebe will be held on Sunday 27 September. The City will again provide data sheets for recording the numbers of each bird species seen and will analyse the results. On the same day all Society members will be invited to identify and count birds in their own gardens and complete a data sheet.

Sophie also reported that the establishment of the new park adjacent to the Harold Park development was close to the planting stage. Ferns and grasses are naturally regenerating on the park land near the terrace houses at the southern end of the site. The privets and *Celtis*, already part of the new park (especially on the top of the cliff face), still need to be progressively removed.

For the past three weeks in a shop window at 26 Ross St, Judy Christie from the *Friends of Orphan School Creek Bushcare Group* organised a photographic and native plant display about the Creek (see photo). It included historical photographs of the park dating back to the time in 1926 when the creek was relocated in buried storm water pipes. We also invited other local residents to join the Group. The planned working bee in the park on Sunday 21 June 2015 was cancelled as the City had not completed the necessary

preparatory work. The latest working bee was held on National Tree Day, Sunday 26 July 2015.



Display in shop window in Ross St of seeds collected from native plants in Orphan School Creek by the Friends of Orphan School Creek Bushcare Group. The seeds are germinated by the Group and the seedlings planted in the park during the monthly working bees. (Photograph by BRANCH3D).

The *Glebe Bushcare Group* continues to collect litter in the Federal Park area, and stakes and lids have been placed to help protect recent native plantings. The City is proposing to provide the Rozelle Bay Community Native Nursery with alternative accommodation in Chapman Rd near the Pet-O building. The Group continues to meet each Wednesday at 8.30am.

On Monday 15 June, Helen Randerson, Judy Christie and Jeanette Knox met onsite with Joel Johnson, Manager, Parks Trees and Aquatic Facilities and Sophie Golding from the City of Sydney to discuss future plantings in the *Town Hall Garden*. It appeared that 'heritage' has been the sticking point in the plans for future planting in the Garden i.e. the reason the grass has remained at

the front, rather than following through on the approved DA provisions. The original DA, approved by the City in June 2010, was to establish a small-bird-friendly native habitat garden on the sunny grassed area in the front of Hall. Joel and Sophie both seemed surprised that Glebe Town Hall had been planted with choice shrubs when it was opened in 1880, and they asked to be sent the Town and Country Journal article from 1880. The City also agreed to contact Peter Tonkin, who was the heritage architect for Glebe Town Hall's refurbishment – Peter has a great native garden himself and he should be supportive. They were given a copy of the DA provisions, which they didn't seem to have seen, and a list of 'Blue-wren friendly' native plants. Judy also gave them a copy of the 13-14 June *Sydney Morning Herald Spectrum* article about good new native hedging plants. We walked around the whole site, and discussed the need for appropriate maintenance and coordination, considering the Town Hall's proximity to Jarocin Ave where wrens have recently been seen.

Sophie Golding reported at our Subcommittee's meeting that the City had made no final decisions

regarding native plantings in the garden. It was agreed that there should be no difficulty in establishing a volunteer bushcare group to assist with the future maintenance of the Garden.

The Glebe Palmerston and Surrounds Landcare Group met on 20 June 2015 and six members were inducted by Rae Broadfoot, Community Gardens and Volunteer Coordinator, City of Sydney. Topics covered included emergency and evacuation procedures for the site, hazard and incident reporting procedures, first aid and injury reporting, and personal protective equipment. The Group will be working on the Upper and Lower Palmerston Ave zones as well as the William Carlton and Quarry St gardens. The Group has decided to apply for a grant from the City to provide funds for a toolbox, first aid kit, tongs, hose, tap, brightly-coloured vests, and signs to indicate who we are, to be put out whilst we are working. A meeting was held on 18 July to draft the grant application.

Andrew Wood
Convenor, Blue Wrens

Subcommittee reports for the AGM

In this Bulletin, we bring you the Annual reports of four of our subcommittees. The remaining four will be included in the next Bulletin.

Planning Subcommittee Annual Report 2014-15

The last year has been dominated by big issues and matters of policy rather than specific development proposals, although there are always plenty of minor ones to keep a Planning Convenor on his toes.

Many years ago the Society wisely decided to give the Bays and Foreshores their own subcommittee. There are good reasons for this. While Glebe itself is within the City of Sydney, most of the Bays Precinct is not. Development in Glebe itself is controlled by the 2012 Local Environment Plan and its associated documents. Exactly who controls the development of the Bays is a moot point: it seems to be whoever the State Government thinks will raise most money for it at any particular time. Indeed, it is the main concern of the Bays and Foreshores subcommittee, and the other residents' groups who have banded together with it, that there is no overall plan for the Bays, and therefore no means by which proposals can be properly assessed. If we are lucky, proposals will go to the Planning and Assessment Commission. The appointment of the developer-dominated Urban Growth to come up with proposals for the Bays is both an opportunity and a concern.

As Planning convenor I happily attended the weekend event (I hesitate to call it consultation) organised by Urban Growth at the Technology Park, and it was indeed a very smooth, even glamorous, public

relations exercise. What older person can resist being asked one's opinion by fresh-faced and enthusiastic young people, who clearly believe the community's views are going to be recorded and taken to heart? Unfortunately, older people are also likely to remember previous occasions when the community's views were also asked for, but then ignored. This indeed was the theme of the Bays Precinct panel discussion at the University of Sydney where I represented the Society in Lesley Lynch's absence in November 2014.

R.J. Williams Lodge and Bidura

To return to matters within my portfolio, there are some major Glebe sites where there is some controversy. The Uniting Church decided not to keep R.J. Williams Lodge as an aged care hostel. Members are probably aware that the building was originally a motel, and was never particularly well suited for aged care use. However, the Church has proposed it be adapted for affordable housing, and this aroused sufficient concern for the Society to call a public meeting. The views expressed were conveyed to Council, and hopefully will influence the assessment.

The sale of *Bidura* also raised public concern, though for different reasons. *Bidura* is an even more sensitive site with a much longer history. Built by Edmund

Blacket as his home while he was building the University of Sydney, it spent most of its existence as a care home for State Wards, and as such it continues to attract a lot of interest from its former inmates. The buildings fronting Glebe Point Rd are Heritage Items and protected, but the concrete 1980 Brutalist building at the rear has always been controversial, and is proposed to be replaced by housing, though it has been leased back to the State for at least two years.

Large scale redevelopments always make nearby residents uneasy, and it is not difficult to understand why. Construction is always disruptive, and we will need to watch any new proposal for this site closely.

Harold Park

As the largest development in Glebe, this is also being closely watched. Roughly half the buildings are complete or nearing completion, and all the others are under construction, except for the affordable housing, which has been handed over to the City by Mirvac. Construction will also begin soon on the 3.8 hectare park, also due to be transferred to the City.

The Tramsheds building, which is the major Heritage Item on the site, is currently having its roof replaced, before being transformed into a shopping, dining and community precinct. My best guess is that this won't be complete until April, 2016.

In the meantime, local residents are keeping a close eye on illegal parking and reporting it to Council, who generally send out rangers promptly. The Society has requested an increase in public transport to cope with the increase in commuters, and this appears to be happening. The extension of the Light Rail to the Quay is still three years away.

The Abbey, 156 Bridge Rd and University Motel, 25 Arundel St.

Hamilton, the cottage demolished on the *Abbey* site, has been rebuilt over underground parking, and the site will soon be finished, presumably with the Montessori preschool proposed for the old church.

Work on the replacement for University Motel, an Urbanest student hostel, is well under way and will be complete before the end of the year. So far as I am aware, the other Urbanest hostels nearby in Wattle and Cleveland Sts have been uncontroversial.

Perhaps the most trying aspect of planning is the propensity of some developers to make successive applications for a site, even though their proposals are clearly unpopular with residents and are usually rejected by Council. Presumably they hope to get their applications approved by a process of attrition, rather than through merit. The most outstanding example is Durham Court, 417 Glebe Point Rd, but there are others. It is often difficult to contain our exasperation, but it is important for us to support each other and stick to our guns in order to achieve the best outcome.

The Big Picture

As predicted, the State Government is trying to circumvent the will of the people using existing powers rather than accept the amendments to its planning legislation. This battle is far from over, as the continuing disputes over coal mining proposals shows. Both the State and Federal Governments seem unable to accept the increasingly urgent need to phase out fossil fuels. This is but one aspect of their reluctance to return planning powers to the people, and to prepare for a sustainable future.

Neil Macindoe
Convenor, Planning

Heritage Subcommittee Annual Report 2014-2015

The heritage environment in NSW remains tenuous at best. Growth projects are being touted as 'transformative' but at what cost? A significant number of communities are already expressing alarm about potential impacts on their local heritage, for example:

- in Parramatta – concerns about proposals which could impact precious *convict heritage*,
- in Haberfield – concerns about WestConnex carving up the *world's first garden suburb*,
- in Pyrmont – concerns about the future of the heritage-listed Powerhouse Museum building, and
- in Millers Point – concerns not only about the sell-off of government-owned heritage housing but also instances already emerging of new purchasers undertaking unauthorised alterations to these heritage properties.

The Glebe Society shares the continuing concerns of the National Trust that a declaration by the government of a 'State Significant Development' (the

lure of big \$\$\$) has the potential to switch off Heritage protections.

In the wake of all this, the Heritage Subcommittee nervously greeted the announcement by the Government that it would sell the heritage-listed *Bidura*, the former home of architect Edmund Blacket. However, the new owners have since indicated their intention to retain *Bidura House* and Ballroom and redevelop the rear of this large site. It is to be hoped that, as the site falls away at the rear, any new structure will not compete with, or overshadow, 'Mr Blacket's House'. The Subcommittee has worked to disseminate to members a range of information to ensure that they are fully aware of the building's complex history, its heritage, its contribution to the Glebe Point Rd streetscape and our sense of place.

We also established a separate website (<http://www.glebeislandbridge.com>) to promote a public conversation about the potential re-use of the Glebe Island Bridge, a heritage-listed public asset which currently stands idle. A re-activated bridge

could provide pedestrians and cyclists with a safe, level and picturesque conduit to and from the city whilst also providing managed maritime access to the bays. The Glebe Society has written to the Heritage Minister expressing concern about the current condition of the bridge and the need for a heritage conservation plan to be formulated and speedily implemented.

Still on bridges, we are planning an event later in the year to celebrate the 20 years since the opening of the Anzac Bridge. At our suggestion, Glebe Library organised an evening conversation last April with Alan Somerville, the sculptor of the iconic Anzac Statues which stand on the western end of the Bridge.

The Subcommittee's involvement in the World War I commemorations included:

- arranging for the Glebe Society to donate a *Pinus halepensis* (Lone Pine) sapling to the University of Sydney in memory of the Glebe diggers who were connected with the University either as students, researchers or support staff.
- tracking the restoration of the Diggers Memorial; the cross and diadem have now been installed. Still outstanding is the installation of a replacement for the unsympathetic chain-wire gate: hopefully this will occur before Remembrance Day this year.
- supporting the planned Glebe Town Hall Anzac Centenary exhibition by providing 199 hand-knitted poppies, each representing a Glebe man who fell in the Great War.

- coordinating the annual Remembrance Day service at the Diggers Memorial.

We have used the *Bulletin* to:

- highlight, discuss and comment on various aspects of Glebe's built environment (*From the Terraces*).
- tease out recollections from long-standing members of the Glebe community (*Rearview*).

We also responded to a request to provide a revised text for the Early Architects Walk, suitable for audio presentation.

We are grateful to Peter Thorogood who took up the technical challenges of creating the Glebe Island Bridge website and who has also further refined access to the heritage sections of the Glebe Society website.

Thanks also to Rod Holtham whose work in documenting the contribution of Glebe men and women to WWI has been of considerable assistance.

Dr Vanessa Witton resigned from the Subcommittee due to pressure of work. We shall greatly miss her expertise.

I am most grateful to Subcommittee members Lydia Bushell, Margaret Cody, Ros Jehne, Anne Owens, Erica Robinson and Meg Wallace who have so willingly contributed ideas and energy to heritage matters over the last 12 months.

Liz Simpson-Booker
Convenor, Heritage

Blue Wren Subcommittee Annual Report 2014-15

Are there any blue wrens in Glebe? The answer over the past year is 'sometimes'. During our second annual spring bird survey on Sunday 26 October 2014, local residents in Jarocin Ave reported that blue wrens, both male and female, are seen in their garden from time to time – they are probably flying there from the Sydney University. During the lecture given to the Society on 7 May by Dr Holly Parsons (Program Manager for *Birds in Backyards*), a question was raised as to the possibility of reintroducing blue wrens to Glebe. Dr Parsons advised that this could be difficult as the birds are not an endangered species and, as we know, they are present locally at sites on the campus of the University and on the harbour foreshore at Pyrmont. Thus, the return of wrens to Glebe is dependent upon the establishment of habitat corridors linking Glebe to adjacent populations.

The refurbishment of John Street Reserve (approved site for a biodiversity demonstration and blue wren habitat garden) by the City continued with the construction of a new retaining wall along its western boundary. On 15 June, members of the Subcommittee met on site with Joel Johnson,

Manager Parks Trees and Aquatic Facilities and Sophie Golding, Urban Ecology Coordinator, from the City to discuss future plantings in the Town Hall Garden. The City has now agreed to review the plan for plantings for 'blue-wren friendly' native plants in the gardens at the front of the Hall. The Reserve and Town Hall gardens will form part of an important blue wren corridor which will eventually link Glebe to the wren populations at the University of Sydney.

Over the past year, the Subcommittee has acted as a coordinator and facilitator for the various bushcare groups in our suburb. The *Glebe Bushcare Group* continued to meet each Wednesday morning and centred its activities on the parklands adjacent to Chapman Rd. After the Society wrote letters to the City, restricted parking signs were installed in Chapman Rd in order to solve the problem of campers staying for days in the parklands and damaging the Group's native plantings, and also to request that a site in Chapman Rd continue to be provided for the Rozelle Bay Community Native Nursery.

The bi-monthly working bees conducted by the *Friends of Orphan School Creek Bushcare Group* continued – in November 2014, the volunteers collected seeds from the native flora in the Park; the seeds were germinated and the seedlings planted in the Park or in local private gardens. A joint planting day with the City of Sydney was held on 18 April 2015 during which 200 native tube stocks were planted on the banks at the northern entrance to the park. To publicise the work of the Group and invite local residents to join them, a photographic and native plant display was organised during June in a shop window in Ross St. It also included historical photographs of the park dating back to the time in 1926 when the creek was relocated in buried storm water pipes.

The formation of *The Glebe Palmerston and Surrounds Landcare Group* followed an onsite meeting near the Glebe Light Rail Stop on Tuesday, 30 September 2014 between local residents and Melanie Flanigan and David Mackney from Operators of Sydney Light Rail, Transdev, and Rae Broadfoot

who is Community Gardens and Volunteer Coordinator at City of Sydney. The Group's volunteers now have an active program for native plantings in seven of Glebe's pocket parks.

The Subcommittee has 16 members and 10 or more usually attend our monthly meetings. Members of the Society with an interest in biodiversity and the care of our suburb's parks are always welcome to join the Subcommittee. For your diary, the Society's third spring bird survey will commence at 6.45am on Sunday 27 September 2015. As in past surveys, we will meet in Paddy Gray Reserve and the City will provide data sheets for recording the numbers of each bird species seen and will analyse the results. On the same day the Subcommittee will be encouraging all Society members to identify and count birds in their own gardens. Please see final arrangements in future *Bulletins*.

Andrew Wood
Convenor, Blue Wrens

Environment Subcommittee Annual Report 2014-15

In 2014-15 the Environment Subcommittee participated in the city-wide 'Garage Sale Trail' and took part in consultation and feedback processes on two of the City's major sustainability policies.

We established a collaborative team with the Glebe Justice Centre to participate in the 'Garage Sale Trail', whose aim is 'to promote reuse, reduce waste to landfill and enable new neighbourly connections'. Our Garage Sale event was able to use the Glebe Justice Centre premises in St Johns Rd and, in addition to the reuse and recycling of a substantial number of household items, raised \$350 for Centipede after-school care.

The City of Sydney has developed an interrelated range of policies and Master Plans that collectively aim to achieve the City's goal of 70% reduction in

greenhouse gas emissions by 2030. The Environment Subcommittee feels that it is important for the Glebe Society to support the City's efforts by participating in the consultation process, providing feedback from the community perspective, and promoting awareness of these initiatives with Glebe Society members. During the past year the subcommittee engaged with the Advanced Waste Treatment and Energy Efficiency Master Plans, with a member attending workshops on the Advanced Waste Treatment Master Plan, and developing submissions on both Master Plans, as well as providing an overview of these complex initiatives through the Bulletin.

Jan Macindoe
Convenor, Environment

Creative Glebe, Social Glebe

New book by the Glebe Society's first secretary, Sandra Darroch

A science-fiction short-story of the '60s was called *The Subways of Tarzoo*. It conjured up a picture of an alien world whose entire surface was covered with giant harps whose function was to harness the energy of the wind to generate the electricity its inhabitants needed to survive. But as their energy requirements increased, they were forced to move underground to give their vibrating harps greater space to exploit the wind.

This apocalyptic image came to mind as I read a piece in *Crikey* this week by one of my favourite journalists, Guy Rundle (though he commentates, rather than reports). His piece was headed *The End Of The Capitalist Society*, and it excoriated the

Abbott Government (Guy is an unreconstructed *soixante huitre*) for undermining the RET, the Renewable Energy Target.

In particular he lambasted the Coalition for criticising wind-farms. He depicted Tony as a latter-day Don Quixote, tilting at wind-turbines which, far from being the blight on the landscape the Coalition is making out, were quite beautiful.

As the poet might have written:

*I wandered lonely as a cloud
That floats on high o'er vales and hills,
When all at once I saw a crowd,
A host, of golden wind-turbines*

Rundle went on: 'Turbines are elegant. Compared to pylons marching across the landscape – which attract no criticism – and open-cut mines, they're aesthetic masterpieces.'

Yet the main point of his excellent piece is that renewable-energy sources are undermining capitalism, and will – along with other things like free open-source software – eventually force it underground, to eke out a precarious existence after the new form of socialism takes over the planet.

Though that may be a bit over-the-top – the Gnomes of Zurich and their mates are more resilient than he would like to think – what he says has a kernel of truth in it. For capitalism – like democracy – is under siege from booming *dirigist* economies like China and new low-energy technology that doesn't need a share-market to flourish.

Rundle's pejorative message was that cheaper energy from solar, wind, and other 'renewable' sources – augmented by emerging battery-bulk-storage technologies – spell the end of the dominance of 'Big Power' ('Big Coal', 'Big Oil', 'Big Gas', and Big Everything-Else). (And that is not to talk about the energy-elephant that is not even allowed into the room – nuclear power.)

There is no question that energy costs are falling (contrary to what your power bills tell you). The cost of generating, transmitting, and retailing electricity has been dropping for years – indeed decades.

As my wife Sandra (Jobson) Darroch's new book on electricity (*Power for the People – An Uncensored Story of Electricity in Australia 1770-2015*) shows, ever since governments, State and Federal, got their sticky fingers on the power-stations, the 'poles-and-wires', and the electricity retailers – the three elements of the energy-supply chain – they have refused to pass on these savings, and instead have ripped off the consumer unconscionably and outrageously. (And that is not to go into – which she in fact does – the chronic corruption that has bedevilled the electricity industry in Sydney and NSW since 1904, when the lights were first turned on.)

The NSW State Government in particular has stripped billions out of a fundamentally efficient and profitable industry to cover its deficits and budget shortfalls, and to finance its pet projects. To mix animal metaphors, successive governments, both Labor and Coalition, have fleeced a cash cow to bankroll their pork barrelling.

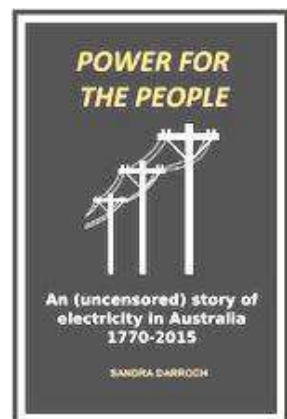
Yet this is coming to an end. The cow is drying up, while the pig has wised up... which is where Rundle's dystopian end-of-capitalism vision clicks in. So let me quote him again:

'the advanced areas of the world – such as northern Europe and China – are well on the road to post-capitalism... soon people will be itching to convert to self-funding solar and half-a-dozen other new technologies, and will eventually resent the obstruction of things that will improve their lives. As these technologies challenge the basis of capital itself, so too will they challenge the fundamental divisions of class. If Labor doesn't get ahead of this, the Greens will – and in a decade this broad, high-tech working-middle class will become their class, and Richard Di Natale's forecast of a 20% vote will look modest in retrospect. Labor in the 21st century is on the way to following the fate of the British Liberal Party in the 20th – a once-mighty progressive force, reduced in a short passage of time to a rump, victim of a refusal to tackle the contradictions inherent in its programme.'

Strong stuff! Yet, as Sandra reveals in her book, much of these matters is already out of our hands. In their desperate bid to squeeze out some last minute milk, they sold off not only the farm, but the cow too. Most of Australia's energy sector is now owned by American and Chinese interests. Who, for example, do you think owns Energy Australia, your friendly local electricity supplier? The Hong-Kong-based China Light and Power Inc, run by an Indian-Jewish clan, the Kadoorie family.

FOOTNOTE: Sandra hereby invites you to the launch of her book, *Power for the People*, at Gleebooks, 49 Glebe Point Rd, at 6pm on Wednesday 12 August. It will be launched by Peter Baldwin, former Social Services Minister in the Hawke Government, and an electrical engineer by profession. RSVP by email to <http://www.gleebooks.com.au/BookingRetrieve.aspx?ID=226565>. If you would like to join us for dinner afterwards locally, tell Sandra at sjd@cybersydney.com.au.

Rob Darroch



Sandra Darroch and her new book, *Power for the People* (image: Gleebooks)

26th Annual Glebe Music Festival

The Czech Philharmonic Children's Choir features in the 26th Annual Glebe Music Festival, to be held in Sydney 6 to 22 November 2015. The Choir was founded in 1932 and has performed in the Carnegie Hall, La Scala Milan, the Tchaikovsky Concert Hall Moscow and many other international venues: <http://www.kuhnata.cz/en/>

On Sunday 8 November at 3.30pm they will perform a free concert with organ at the Great Hall, University of Sydney. Friday 13 at 7pm and repeated Saturday 14 at 3pm, they will perform a different program from the Great Hall concert, at the Glebe Town Hall, 160 St Johns Rd, Glebe (tickets \$20, concessions \$15).

Choirmaster Petr Louzensky will conduct the Czech Philharmonic Children's Choir in Czech and World Vocal Masterpieces by Jan Vodňanský, Tomáš Luis da Vittoria, Giovanni Pierluigi da

Palestrina, Josef Mysliveček, Jan Antonín Koželuh, Jan Novák, Ivan Kurz, Benjamin Britten, Mozart, Brahms, Dvořák, Tchaikovsky, Josu Elberdin, Otmara Máchy and Zdeňka Lukáše.

Artistic Director of the Glebe Music Festival Dr E. David McIntosh AM is hosting the tour in collaboration with the Glebe Society and with the support of the City of Sydney. Further details are available at www.glebemusicfestival.com.

David McIntosh

One of our members is looking for a good furniture restorer. If you know of one (or are one!), please email David at mcintosh@glebemusicfestival.com.

Players in the Pub

Next in our popular series of playreadings at the Roxbury Hotel St Johns Rd/ Forest St Forest Lodge:

Mrs Warren's Profession

by George Bernard Shaw, directed by Linda Beattie; with Peter Callan, Lyn Collingwood, Eli Gallagher, Chris Lewis, Jodine Muir, Alan Walker

Date: Monday 17 August @ 7pm. The kitchen opens @ 5 pm. Please place your food orders early. We always start on time!. Free admission. Donations bucket. *Lyn Collingwood*

Thirsty Thursdays

Glebe Society members and friends are invited to meet in restaurants in and around Glebe, usually on the first Thursday of each month, to eat and talk with other people who live in Glebe.

We try to choose restaurants where we can share dishes, and have six to eight people at each table. Put these details in your diary now:

- On Thursday 6 August at 7pm we will go to *Aghora* Greek Restaurant, 94 Glebe Point Rd.
- On Thursday 3 September at 7pm we will go to *Almustafa* Lebanese Restaurant, 23 Glebe Point Rd.
- And on Thursday 1 October we will go to the *Himalayan Char Grill*, 41 Glebe Point Rd.

Please email thirstythursday@glebesociety.org.au or ring me on 9660 7066 by the Wednesday before the dinner to let me know if you are coming, or if you are likely to be late. *Edwina Doe*

Archway Theatre Company

The Archway Theatre Company is nestled in one of the archways underneath the viaduct near the playground in Bicentennial Park (on the Annandale side).

The next production is *A Sunday Morning in the South & Bronze* by Georgia Douglas Johnson, adapted & directed by Rachel Jordan. It runs from 28 August to 13 September. Tickets are only \$20!

For more information and to book, go to: <http://www.archway1theatre.com/>

As well as a theatre, the archway boasts a lovely little 'hole in the wall' coffee shop. See photo to the right. *Virginia Simpson-Young*



Café at Archway Theatre Company (image: V. Simpson-Young)

For Your Calendar

Sat 1 August 2-4 pm, *Callan Park Compassion and Conflict in The Asylum*, Sydney College of the Arts.
 Thurs 6 August, 7pm. *Thirsty Thursday* Aghora Greek Restaurant, 94 Glebe Point Rd.
 Fri 7 August, 6.30pm, *Farewell to Kim Payne*, manager of Centipede, Harold Park Hotel.
 Weds 12 August, 7pm. *Management Committee meeting*, Glebe Town Hall.
 Sun 30 August, 11am. *Glebe Society AGM*, Glebe Town Hall.
 Thurs 3 September, 7pm. *Thirsty Thursday*, Almustafa Lebanese Restaurant, 23 Glebe Point Rd.
 Weds 9 September, 7pm. *Management Committee meeting*, Glebe Town Hall.
 Sun 27 September, *Spring Bird Survey*. Full details in future Bulletins.
 Thurs 1 October, *Thirsty Thursday*, Himalayan Char Grill, 41 Glebe Point Rd.
 5 - 25 October. *WW1 exhibition & talks*, Glebe Town Hall.
 Weds 7 October, 7pm. *Management Committee meeting*, Glebe Town Hall.
 Fri 9 October, 7pm, *Centipede Soiree*, Glebe Rowing Club.
 Tues 17 November, 6pm, talk by John Symonds: *The Anzac Bridge 20 years on, Benledi*.
 Wed morns, 8.30am. *Glebe Bushcare Group* meets nr Jubilee Park. Contact Sue Copeland: 9692 9161

Book for Glebe Society Events on the Society's Eventbrite page:

<https://www.eventbrite.com.au/d/australia--sydney/glebe-society/>



The Glebe Society Inc

Established 1969

Management Committee

| | | | |
|---------------------|--------------------|--------------|-----------------------------------|
| President | Ted McKeown | 02 9660 3917 | president@glebesociety.org.au |
| Vice President | Murray Jewell | 0405 921 945 | vicepresident@glebesociety.org.au |
| Past President | John Gray | 02 9518 7253 | pastpresident@glebesociety.org.au |
| Secretary | Carole Herriman | 02 9571 9092 | secretary@glebesociety.org.au |
| Minutes Secretary | Rosalind Hecker | 02 9660 7056 | minutes@glebesociety.org.au |
| Treasurer | Jeannie Foyle | | treasurer@glebesociety.org.au |
| | Lorel Adams | 02 9571 1113 | lorel@glebesociety.org.au |
| | Chris Blair | 0414 550 382 | chris@glebesociety.org.au |
| | Jock Keene | 02 9571 4078 | jock@glebesociety.org.au |
| | Meg Wallace | 0414 695 623 | meg@glebesociety.org.au |
| Bays & Foreshores | Lesley Lynch | 02 9660 5084 | bays@glebesociety.org.au |
| Blue Wrens | Andrew Wood | 02 9660 6104 | bluewrens@glebesociety.org.au |
| Communications | Bill Simpson-Young | 0411 871 214 | bill@glebesociety.org.au |
| Community | Janice Challinor | 0401 505 657 | community@glebesociety.org.au |
| Environment | Jan Macindoe | 02 9660 0208 | environment@glebesociety.org.au |
| Heritage | Liz Simpson-Booker | 02 9518 6186 | heritage@glebesociety.org.au |
| Planning | Neil Macindoe | 02 9660 0208 | planning@glebesociety.org.au |
| Transport & Traffic | Murray Jewell | 0405 921 945 | transport@glebesociety.org.au |

Working Groups & Contacts

| | | | |
|------------------|------------------------|--------------|-------------------------------|
| Archivist | Lyn Milton | 02 9660 7930 | milton.lyn@gmail.com |
| Bulletin Editor | Virginia Simpson-Young | 0402 153 074 | editor@glebesociety.org.au |
| Events | Lorel Adams | 0458 365 456 | events@glebesociety.org.au |
| History | Lyn Collingwood | 02 9660 5817 | lynco11@optusnet.com.au |
| History of Glebe | Max Solling | 02 9660 1160 | |
| Website | Phil Young | 02 9692 9583 | webmaster@glebesociety.org.au |
| Chief Tweeter | Scott Calvert | | twitter@glebesociety.org.au |

Highlights this issue

| | |
|--|----|
| Invitation to the Glebe Society's 46th Annual General Meeting | 1 |
| Community Notes by Janice Challinor..... | 2 |
| The Naming of Dave Sands Lane | 3 |
| Liz Rooney – a tribute | 4 |
| Report on the New Members' night | 5 |
| Planning Report..... | 5 |
| Rearview: Interview with Elizabeth Fletcher..... | 6 |
| Who lived in your street? William Pell Sharpley (1898 - 1992)..... | 6 |
| News from the Blue Wren Subcommittee by Andrew Wood..... | 8 |
| Subcommittee reports for the AGM..... | 9 |
| New book by the Glebe Society's first secretary, Sandra Darroch..... | 12 |
| 26th Annual Glebe Music Festival | 14 |
| Players in the Pub | 14 |
| Thirsty Thursdays | 14 |
| Archway Theatre Company..... | 14 |



PO Box 100
Glebe NSW 2037

No.6 of 2015 (August)

Membership of the Glebe Society

- Individual member: \$45
- Joint (2 people, one address): \$55
- Household: \$60
- Concession (student or pensioner): \$20
- Institution or corporate: \$110

How to join

- Join online: complete the Membership Application on our website under 'Membership'
- Download a membership form from www.glebesociety.org.au; or
- Write to the Secretary at PO Box 100 Glebe 2037; or
- Email secretary@glebesociety.org.au



Right: R1 Class tram about to turn into Ross St from St Johns Rd, circa 1958 (image: Steve Terrill, Flickr)