

# Glebe

# Society Bulletin

3/2008 April/May

## Forget the Olympics! Join in "The Games" at Wentworth Park

Sunday, 18 May, will mark a new beginning for Wentworth Park. For years this former treasure has been neglected, but now it is coming back to life and is ready once again to take its rightful place as one of Sydney's great parks.

The Community Games Day organised by the Blackwattle Cove Coalition (BCC) is designed to attract residents from the suburbs surrounding the park, and draw attention to its great potential.

The day will be a combination of family fun and historical displays and talks. The games celebrate the colourful history of the park as a sporting venue and run the gamut from gumboot throwing, egg and spoon races and a giant tug-o'-war, to a centenary of Rugby League match re-enactment

Another feature of the day is a competition that gives residents the chance to have their

### Anzac Day 2008

## Stories of the boys from Forest Lodge

*The showers that dampened the dawn service at Martin Place had cleared by the time the small crowd gathered at the war memorial on Glebe Point Road to mark Anzac Day 2008.*

*The service was conducted by the minister of the Glebe Community Church, Pastor Julie Brackenreg, who led a surprisingly robust rendition of 'Our God our help in ages past before, as has become customary, Max Solling delivered the address. Liz Simpson-Booker laid a wreath on behalf of the Glebe Society, piper Rob McLean played the lament, then we retired to St John's for a cuppa.*

*What was different about this year's service was the stories Max was able to tell, courtesy of research by Rodney Hammett, about individual soldiers from Forest Lodge who died in the First World War. Max's address is reproduced below.*

This morning I would like to share with you some thoughts about some of the people whose names are inscribed on the memorial's marble nameplate. Some 792 Glebe residents enlisted in the AIF between 1914 and 1918

New Wentworth Park entrance plaza.  
Photo: Bruce Davis

say about the future of the park. The best entries will win great prizes.

The Glebe Society is a founding member of BCC and many members, particularly Anne Fraser, have been involved in organising the day. BCC, which was established in 2006, is made up of a wide range of community groups from Glebe, Ultimo and Pyrmont.

**More Games Day stories on page 4**

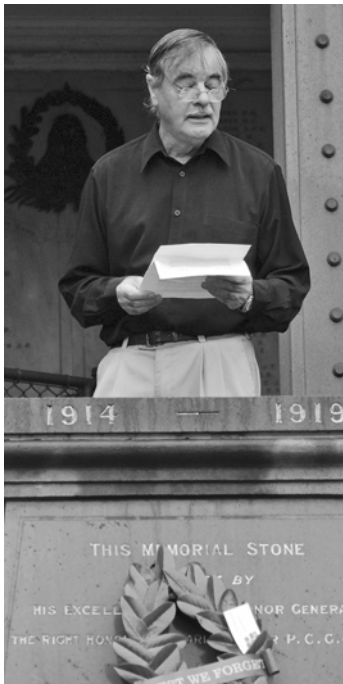
and sailed off to foreign theatres of war. A deliberate and systematic effort was made in Glebe after the war to record the names of all these people on a brass honour board in the foyer of the town hall, and then, in common with hundreds of places throughout the country, there was a steely determination to create a collective resting place for all its residents who died in the war, a tangible presence for local mourners separated from their dead in Gallipoli, France and the Middle East. Local people donated £2,500 for this granite and marble mausoleum opened on Anzac Day 1922.

Rodney Hammett has built up a detailed data base of the 174 people whose names are inscribed here, listing their rank, battalion, date and place of enlistment, age, service number, date and place of birth, occupation, address, number of siblings, and date of death.

This morning I would like to focus on some of these citizen soldiers who gave their address as Forest Lodge. The 20 names here

Continued on next page

"Our built heritage—How safe is it?" Book now for function on 4 June on the enclosed form.



**Left:** Max Solling delivers the address at the 2008 Glebe Anzac Day service.

**Above:** Faces along Glebe Point Road. Photos: Bruce Davis

brother George was severely wounded at Gallipoli and repatriated to Australia early in 1916 and demobilised. George then re-enlisted and served in France in 1917 and 1918.

Captain William McDonald of the 4th Battalion returned to his regiment in France in 1916 and was killed in action at Mouquet Farm on 16 August 1916, aged 36 years. The widow's pension Helen received, about ten shillings a week, was only one quarter of the average weekly wage, a level of benefit less than that paid in Britain and France. Helen continued to live at Glebe, and resided at Minerva Flats, Mansfield Street in 1967. Death or incapacitation of breadwinners, whose families often lived from week to week, inflicted great deprivation on their dependants. The war, contemporary doctors concluded, created conditions for an increased incidence of



Liz Simpson-Booker lays the Glebe Society wreath. Photo: Bruce Davis

from Forest Lodge reflect a wide range of occupations - wool wash labourer, tie cutter, deck hand, tinsmith, milkman, process engraver, enamel iron-sign maker, coal elevator attendant, sailmaker, railway ganger, butcher, barber, printer, labourer and farm labourer.

The youngest from Forest Lodge to volunteer for overseas service was Private Ivan Carter who lived with his parents at 8 Junction Street with brother Alexander. A clerk, he was only 17 when he enlisted on 26 July 1915, claiming to be 18 years of age; Ivan sailed from Sydney in the *Port Lincoln* on 13 October 1915 with trainguard Andrew Forbes who lived just across the street at 21 Lodge Street. The troop ship sailed via the Suez Canal, and Ivan Carter joined troops camped in Egypt. A stretcher bearer with the 45th Battalion he travelled to France where he was killed in action near Villers Bretonneux on 8 August 1916.

Captain William McDonald, at 34 years of age, was the eldest Forest Lodge resident to enlist. He was a reservist in the NSW Scottish Rifles, when he served in the Boer War, and before the 1914-18 war lived with wife Helen, and daughters Grace and Joyce at 124 Hereford Street. He enlisted in August 1914 and was part of the AIF landing at Gallipoli on 25 April 1915. Wounded at Lone Pine in August 1915, where he was mentioned in dispatches, McDonald was hospitalised on Malta, and then went for rest and recovery in England. His

stress and psychological breakdown, and returned men suffered higher rates of employment disruption, suicide, vagrancy and marital instability than ordinary Australians. Men with chronic injuries and sometimes mental instability suffered social and psychological problems, afflictions that placed a disproportionate burden on families, leading to divorce and separation.

In this time of trial and tragedy, a great outpouring of grief was reflected in a proliferation of *memoriams* published in the *Sydney Morning Herald* on the death at Gallipoli of 19 year old Percy Gibbs, the only child of Percy and Nellie Gibbs. Percy Gibbs, a process engraver, lived with his parents at 16 Charles Street, Forest Lodge and enlisted in Glebe on 24 August 1914. A member of the first Field Artillery Brigade, gunner Gibbs waded ashore at the Gallipoli landing and was killed on 2 June 1915. His distressed father wrote to the Defence Department:

"I am informed that my beloved son Gunner P.L.Gibbs (No 282) second Battery, 1st Division has been killed in action. Will you please tell me if the dreadful news is quite true? His mother and I cling to the hope that there may be a mistake and that our only child and only treasure in life is still alive. Please excuse this very unconventional note to a business department but I cannot write in a formal way just now. Yours truly, P.Gibbs" In July 1915 Mr Gibbs indicated he had received letters from Percy's friends in his brigade, Lieutenant Selmes, Sapper Patterson and Gunner Horan, "acquainting me with my son's death".

Grief remained with people as they attempted to rebuild an internal and external world without those to whom they had been so fundamentally attached. The private loss through the letters and diaries of Glebe and Forest Lodge mothers, fathers, widows, relatives and friends contributes to our

Continued on next page

Glebe Society Bulletin

# Captain James Francis Hurley, OBE



Captain Frank Hurley, 1918

With Anzac Day just past it is timely to remember a Son of Glebe who made a significant contribution in the First World War. Born James Francis Hurley to mother Margaret and father Edward at Glebe on 15 October 1885, he was known as Frank and attended the Glebe Public School. He left school at the ripe old age of 13 and shot through to Lithgow where he worked in a steel mill, returning home when he was about 15 years old. He then studied at the local technical school and attended science lectures at Sydney University. He was quite interested in photography and showed a flair that few possessed, purchasing a Kodak box camera for fifteen shillings when he was about 20 years old. He joined Harry Cave in his postcard business and was quickly recognised for his technical skills. Frank also went to great lengths and took extreme risks to always secure the best shot. He won many amateur and pro-

fessional awards. At the age of just 25 he held an exhibition of his work and was noticed by the famous explorer Douglas Mawson, who twelve months later invited him to be the official photographer on the Australian Antarctic Expedition. Hurley's reputation grew and after several other great adventures he joined Sir Ernest Shackleton in 1914, returning to the Antarctic and produced his most famous still photographs of the Ship *Endurance* being slowly destroyed by the pack ice and the heroic struggle of the Shackleton group.

In August 1917 Frank was approached by the AIF to become one of the official war photographers. He accepted the post and was subsequently made an honorary Captain. He worked on the western front at both Ypres and Passchendaele with Charles Bean, the official War Correspondent and was known by many soldiers as the 'mad photographer' because of the terrible risks he took. The war deeply affected Frank Hurley but his fascination with the battlefields and a driving desire to secure the best visual shots resulted in dramatic images, particularly during the Passchendaele Campaign in 1917, his most famous picture being *Morning at Passchendaele*. He always tried to produce results that

would capture the public imagination and he quite often used composites, which were simply the printing of several negatives images onto the one print. Charles Bean, being a journalist striving for reporting accuracy, argued with Hurley over this technique but he refused to give up the practice. Frank Hurley also spent time with the troops in Palestine, where he took many shots of the Australian Light Horse and also the Australian Flying Corps in its infancy. After the War he returned to London where he held an



Frank Hurley's most famous picture, *Morning at Passchendaele*.

exhibition of Australian War Photography. During the Second World War Frank Hurley returned to the Middle East as a war photographer for the AIF and was awarded an OBE in 1941. He remained in the Middle East until 1946.

Frank Hurley returned home and continued to travel in Australia and take photographs. He published several books of his photographs of Australian landscapes. He was one of the most influential photojournalists in Australia and inspired documentary film making between the two world wars. He died in 1962 but will always be remembered as a person who took great risks to enable everyone to enjoy visual experiences not usually possible. The National Library in Canberra has several thousand Hurley photographs and also diaries he kept dating from 1912 to 1962.

- Rod Holtham

Continued from previous page

## Anzac Day 2008

understanding how people came to terms with the deaths of friends and family. Clearly the magnitude of Glebe's contribution to the war effort, as nearly 800 of its residents sailed overseas, placed a heavy strain for years on the social fabric of Glebe.

The war was hardest on the mothers of soldiers. Ernest Welling was killed in action on 20 July 1916. Two years after his death Mrs Welling from Wi-

gram Road sent this *in memoriam* to the *Sydney Morning Herald*:

Oh the anguish of the mother  
Oh the bitter tears she shed  
When she heard her boy was missing  
And she wondered "Is he dead?"  
Oh the weeks and months of torture  
Oh the agony and pain  
And she wept and prayed and wondered  
Would he come to her again  
"Killed in Action" came still later  
Oh the awful truth is bare.

# Keep Sunday, 18 May, free for the Wentworth Park games day

From pristine harbour cove... to a foul, stinking eyesore... to a beautiful park and centre of sporting activities of every kind... to neglected undefined sorry space cut up into three areas by an ugly gaol-like wall. That is the story of our Wentworth Park! The history of the park is nothing if not colourful, and sporting activity has always featured strongly in this space.

Look around you and you will see that changes are afoot at last. This grand old park of amazing size (13 ha) is slowly regaining its beauty. It has a long way to go but the rebirth has started. Last year the Sydney City Council spent \$400,000 mulching, erecting playground equipment, physical fitness stations, new lighting, and pathways. The Wentworth Park Sporting Complex Trust, which is responsible for the central area of the park, pulled down the western side of the "gaol" wall and opened up views of the greyhound track and historic kennels—a great start to re-establishing the grandeur of the site.

And there is more to come! A feasibility study has found it is possible to remove the eastern wall, increase the width of the footpath along Wattle Street, and remove the infills of the viaduct arches. Keep watching Wentworth Park, things are changing!

So BCC wishes to celebrate this wonderful park, and for everyone to reacquaint themselves with the grand space that joins Ultimo, Glebe and Pyrmont. We want to encourage Council and State Government to give this wonderful Park adequate funds to maintain it and, with careful planning, to develop it and connect it to the foreshore.

## Program highlights

The program includes games for school children and a variety of "people's games", a race on the greyhound track for family dogs, history talks and displays, a giant tug-o'-war (everyone can join in), a mini-marathon, and soccer and rugby league matches. Every competitor will earn points for their suburb and, at the end of the end of the day, the winner will be presented with the GUP Cup.



Wentworth Park Sporting Complex Trust chair (and Glebe Society member) Susie Cleary displays the *Wentworth Park Mongrel Cup* that will be awarded to the fastest non-greyhound on the track at "The Games". Photo: Bruce Davis

## Enter the "Have your say" competition

Enter the "How I would like to see Wentworth Park 2020" competition and have your say! Entry forms are available on our website ([www.celebratewentworthpark.org.au](http://www.celebratewentworthpark.org.au)) and, on the day, from the information desk at the foot of the clock (semaphore) tower. Prizes include two Harbour Bridge Climb tickets and vouchers for hampers from the Fish Market.

BCC wishes to thank its sponsors:

Sydney City Council

Wentworth Park Sporting Complex Trust

Doltone House

Channel 10

Broadway Shopping Centre

Sydney Fish Market

Harbour Bridge Climb

# Large housing development for Ultimo

As this edition of the *Bulletin* went to press a major housing development located in an area between Wentworth Park and the Broadway Centre was jointly announced by the State Government and the City Council. The project will comprise "up to 700 new affordable, social and private housing units".

President **Jan Macindoe** writes: The Glebe Society welcomes the announcement by City of Sydney and State Government of a joint project for housing development in the area adjoining Wentworth Park and Bay Street. The City of Sydney is offering its depot site, and the State Government will contribute the adjoining site owned by Housing NSW which is currently three-storey flats dating from 1960. The proposal, about to enter the planning stage, promises to include comprehensive community consultation, and to provide individual options for accommodation of the current residents. This could be an exciting project for Glebe, bringing opportunities to implement more sustainable models of inner-city residential housing, and better social integration. We look forward to the more detailed proposals.

**Bruce Davis** writes: This development will result in many new families moving to an area already under-supplied with open space. Hopefully this decision will give added impetus to the upgrade of Wentworth Park.

## Glebians! Don't Let this Happen!



## Wentworth Park Games Day

Residents of Glebe/Forest Lodge wear RED and take part in the first ever Community Games

18 May, 11am- 4.30pm

Glebe/Forest Lodge vs Pyrmont/Ultimo for the GUP Cup!

Further information: [www.wentworthparkcelebration.org.au](http://www.wentworthparkcelebration.org.au)

# Expanded goals for 2008–2013

The strategic planning workshop held on 16 March, and reported on in the last *Bulletin*, identified a wide range of specific points related to the broader strategic goals. Tessa Copland and Jan Macindoe met after the workshop to sort these detailed comments and write them up under the appropriate goals. This expanded statement of our goals, when finalised, will form the centre of our Strategic Plan for 2008 – 2013.

Members are invited to amend or add to the points below. Please send your suggestions to:  
secretary@glebesociety.org.au

Subcommittees of the Society will identify particular actions for the coming year that will contribute to achieving these goals, and present them at the Glebe Society's AGM in August. A short version of our Strategic Plan (not including subcommittee actions) will be developed for public distribution.

## **Retain and strengthen our unique heritage as a substantially intact 19<sup>th</sup> century townscape and important urban conservation area.**

- Promote awareness of heritage buildings and the Conservation Areas, and the processes required for its preservation.
- Research history and heritage of the built environment to strengthen heritage controls within the town plan.
- Encourage the maintenance and restoration of heritage buildings by individuals, businesses and organisations.
- Commemorate significant buildings, people and events through informative plaques.

## **Lead the way on local initiatives in sustainability – energy, water, waste reduction and biodiversity.**

- Implement specific green initiatives and support sustainable energy and water-saving practices suitable for inner-city residents, businesses and organisations..
- Encourage initiatives to improve water quality in Rozelle and Blackwattle Bays.

- Support sustainable public and private gardens, and creation of habitat for biodiversity.
- Encourage community gardens and composting

## **Develop a new Town Plan that maintains and enhances the village character and ensures a high standard of new development.**

- Ensure community consultation for new planning instruments and new development, and that decisions are made at local level.
- Ensure the new Town Plan is inclusive, and consistent with conservation, transport and sustainability needs.
- Involve community in Tramsheds adaptive reuse.
- Lobby for a masterplan for Harold Park and Tramsheds together.
- Ensure any new development, such as Harold Park, is fully integrated, meets community needs and has adequate infrastructure.

## **Improve and extend public transport, encourage walking and cycling and minimise traffic on our streets.**

- Support the extension of light rail and integrated ticketing.
- Support facilities for cyclists, including dedicated routes, bike hire and secure stands.
- Adopt measures to discourage through-traffic in residential streets.
- Promote pedestrian routes with signage and maps.

## **Develop and extend open space linkage within Glebe and to adjoining communities, as well as developing opportunities for recreational green spaces.**

- Ensure completion of walkways to the Fish Markets and beyond, and along Orphan School Creek to Parramatta Road, and promote pedestrian traffic and recreation.
- Support facilities for community use of Wentworth Park, and encourage discussion of future of the Greyhound Track.
- Ensure small parks are maintained

and upgraded, with planting to attract birds.

## **Encourage diverse and prosperous commercial and business activity that enriches the experience of residents and visitors.**

- Preserve the village atmosphere, including diverse, small-scale businesses that cater to both locals and visitors.
- Encourage businesses to promote Glebe's heritage streetscape character.

## **Celebrate Glebe's diverse population and perspectives.**

- Support proposals for affordable housing.
- Continue to hold events that foster inclusiveness across social groups.
- Support local schools through mentoring, grants and involvement in community events.
- Work with government and non-government agencies to discourage anti-social behaviour and increase safety and security of residents and visitor.

## **Promote and enhance the intellectual and cultural life of Glebe for all age groups.**

- Increase venues and opportunities for lively discussion and debate, including use of libraries, bookshops, pubs, and council venues.
- Encourage use of parks in summer for outdoor cultural events.
- Encourage music events to appeal to different resident groups and ages.
- Support wi-fi hot-spots in public venues.
- Promote links with educational institutions.
- Support public art and special art events.
- Use the Society's website as a vibrant interactive resource for members and the community.

## **Extend support services, networks and facilities.**

- Support services that cater to the range of resident needs – baby health, family and youth services, support for the aged.

Continued on next page ...

# Planning Matters

## 63-5 Hereford Street, Forest Lodge

Last year this pair of terraces, one derelict, were auctioned by their owner, the NSW Department of Lands. The new owner has now put in an application to restore and extend the terraces and to build four new two-bedroom townhouses on the block at the rear, which extends all the way to Alfred Road and Minogue Crescent.

On Saturday, 29 March, Diane Gray, Heritage Convenor, the President and I met with local residents on site to discuss the proposal. As a result there are a number of issues we believe should be addressed. The quality of the application is generally poor. The site has difficult access from Alfred Road, which is really only a lane, and already an important pedestrian connection to Minogue Crescent, as well as providing access to adjacent townhouses.

There is a significant fig tree on the site, on the edge of the cliff, that helps to form a green canopy over Minogue Crescent. The proposed extensive excavation for underground parking is likely to affect its stability and that of the cliff itself, and possibly that of adjacent dwellings. The proposed fourth townhouse adjacent to Alfred Road exceeds the height limit and would be quite dominating viewed from the road (the residents sketched the elevation, superimposed on a photo, to show its impact in *The*

---

... continued from previous page

## Goals for 2008–2013

- Encourage innovative services for sharing, community self-help and collaboration.
- Lobby for continuing maintenance and support services for Department of Housing residents.

- Jan Macindoe, President

Don't forget - Members are invited to propose amendments or add to the points above. Please send your suggestions to:  
secretary@glebesociety.org.au

*Glebe* of 2 April). The proposal also exceeds the FSR for Glebe by 0.08. The extensions to the existing dwellings are very bulky. The Society suggests the proposal be redesigned and reduced by eliminating the most intrusive townhouse to limit the impact.

## Glebe Conservation Study

There is a copy of the Study now in Glebe Town Hall, and Liz Simpson-Booker, Diane Gray and myself are happy to lend our copies to any member who wants to read it at leisure.

## Proposed new planning laws

Following the White Paper issued last year, the State Government has now prepared draft bills that would give these proposals the force of law. Despite widespread criticism, including a submission from The Society, the bills reflect the White Paper very closely.

Moreover, The Society's greatest concern, the use of political donations to influence planning decisions, has not been effectively addressed. Indeed, more evidence emerges daily that development proposals have been allowed to proceed despite opposition, not only from the community, but from planning authorities as well. It is logical to draw the conclusion political influence is increasingly circumventing planning laws through donations from development and construction companies. The Society believes the proposed bills would entrench this corruption by vesting planning powers in bodies appointed by the Minister for Planning.

The Society also believes that while some reforms may be desirable, the existing laws protect the community far better than the proposed bills. Therefore we ask members to write to some of the key legislators asking them to oppose the bills and retain the existing Environmental Planning and Assessment Act. They have been selected because the government depends on their support to pass bills

in the Upper House. However, should you wish to write to our local member, Verity Firth, as well, or any other parliamentarian, please do so.

The key points to make are:

- Planning decisions should normally be made by local councils, not by officials appointed by the Minister for Planning.
- Public advertising of all substantial Development Applications in Conservation Areas like Glebe should continue to be required, and all public comment considered.
- Assessment of applications should continue to be made by suitably qualified council planning officers appointed for that purpose rather than private certifiers employed by developers.

Parliamentarians to write to are:

### Hon Roy Smith

roy.smith@parliament.nsw.gov.au  
Fax 9230 3009  
Phone 9230 2850

### Hon Robert Brown

robert.brown@parliament.nsw.gov.au  
Fax 9230 2613  
Phone 9230 3059

### Hon Gordon Moyes

gordon.moyes@parliament.nsw.gov.au  
Fax 9230 2132  
Phone 9230 3340

### Hon Fred Nile

F.Nile@parliament.nsw.gov.au  
Fax 9230 2098  
Phone 9230 2478

The Local Government Association (LGA) has also launched a website, [www.keepitlocal.org.au](http://www.keepitlocal.org.au), that makes it easy for you to send an email to

### Hon Verity Firth

balmain@parliament.nsw.gov.au  
Fax 9660 6112  
Phone 9660 7586

On the front page of the LGA website is a button to connect you to a ready-to-send email.

- Neil Macindoe  
Planning Convenor

## Who lived in your street?

# Migrants at 57 Hereford Street

by Lyn Collingwood

In January 1913 the British Immigration League officially opened its Receiving Depot and Labour Exchange on a large estate bordered by Hereford and Ross Streets, overlooking Forest Lodge. The first of its kind in Australia, the depot was a place where newly arrived British breadwinners and their families could stay while they were looking for work. It was planned to build bachelors' quarters when more money was available. The League, keen to attract skilled artisans and labourers for the expanding primary and secondary sectors, also matched registered employers with prospective employees. Especially welcome were men who had been in the military in India. By the time the depot was opened the League had brought over 7,000 men, women and children to Australia.

Behind an ivy-covered brick wall at 57 Hereford Street were stables and a well-established garden of magnolias, pepper trees and Norfolk Island pines. The League took possession of *Glenwood*, the existing ten-room stone house, and erected a separate service building with hot and cold baths and showers, a washhouse and laundry, pantries and storerooms, and a kitchen capable of cooking for 100 people. Quarters were set up for a resident matron, manager and steward, and an office and writing rooms were provided for the League. New gas fittings were installed. Architects Oakley and Middleton donated their services. Before the opening ceremony a number of immigrants had already moved in.

The project arose from an earlier private campaign to raise money to buy a modern battleship to present to 'The Mother Country' after stories began circulating about Japan's territorial ambitions and increased warship construction in Germany. When the Commonwealth decided to establish an Australian navy and it was realised

that the £100,000 donated (including £7,000 from the Australian Tobacco Company) was not enough to buy a ship, the Dreadnought Fund was put to other purposes. President of the British Immigration League Professor Anderson Stuart, Dean of Medicine at Sydney University, advocated his institution as the site for a naval college but £40,000 went towards its construction at Jervis Bay.

Other funds were allocated to the Dreadnought Farm at Pitt Town (Scheyville) where British city boys were given board and lodging while learning shearing, horse riding, cropping, dairying, butchering and farm equipment maintenance. They were then sent to work on rural properties, mostly dairy farms in northern New South Wales. The scheme was put on hold during World War 1 when the farm was used briefly to detain German citizens taken from boats moored in Sydney Harbour, but was revived in the 1920s.

Albert Augustus Dangar made one of the largest contributions to the Dreadnought Fund: a house and a separate block of land in Hereford Street which he valued in total at £5,000. The League sold the house, buying instead *Glenwood* adjacent to the vacant land to consolidate the property. Its site sits to the south of Walshe Avenue, formerly Hereford Lane. The NSW College of Nursing today occupies *Kerribree* at number 55.

Dangar was the key speaker at the opening. The audience applauded his homage to the British Empire and his disparaging comments on successive State governments which had failed to encourage immigrants, especially reservists from India, needed for the defence of Australia. What would happen if the Dominion was totally cut off from the protection of Great Britain, and an enemy's fleet of armoured cruisers was outside the



*Glenwood* at 57 Hereford Street was bought in 1912 by the British Immigration League to provide shelter and advice for 'worthy' job seekers from 'The Mother Country'. Ironically, Australians who died in World War One far outnumbered the immigrants who, it was hoped, came out to help defend us from external threats.

Heads? One day, perhaps, politicians would be 'running rickshaws for the Japs'.

In London the need for a receiving depot had long been urged. Misled by unscrupulous passage brokers, many people paid their own way to Sydney in the belief that they would be offered work immediately and had no need for landing money. Some found themselves stranded when their skills were needed in other places; others wandered the streets looking for accommodation. The League had hoped to find a site close to the wharves but Millers Point real estate proved too expensive. Dangar's offer was gratefully accepted.

The Glebe experiment was short-lived. During 1913 some 690 immigrants were processed, a drop in the number of applicants from the year before, probably because of a small-pox epidemic in Sydney. Visitors such as British politicians Sir Edgar Vincent and Leo Amery and the Reverend H C Martin (general secretary of the Royal Army Temperance Association in India) expressed admiration for the centre's work, made easier by government provision of half fare rail transport for its job seekers. However, the depot closed on the outbreak of war and the League withdrew to its city headquarters in O'Connell Street, confining its activities to 'propaganda'. In July 1915 what was

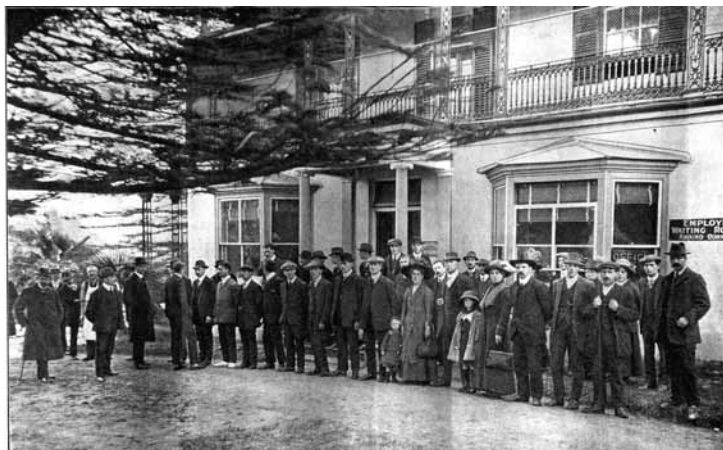
Continued on next page ...



... continued from previous page

now known as *Glynwood House (sic)* was offered rent free to the Department of Defence for use as a military hospital. By 1917 it was a Red Cross Convalescent Home, one of 25 in the State caring for wounded troops. By war's end the League had switched from private to public sector support – insisting that governments be solely responsible for the welfare of ex-service personnel.

From 1920 to 1923 the League ran a hostel at 57 Hereford Street. Its matron was Patricia Dennis. By 1925 the building had been converted into residential chambers. The longest occupant on the site was John Coady who ran a carrying business from stables fronting Ross Street from 1913 until at least 1931. Like so many fine stone buildings in Glebe, *Glenwood* fell victim to the demolisher.



Reverend H C Martin (left) at *Glenwood* in conversation with an ex serviceman whom he knew in India. By 1913 married men were encouraged to migrate with their families. Earlier, single men were seen as easier to place in employment. The tweed cap, said to be the hallmark of the British labouring class, is in evidence.

## Sustainability: Australia should take the lead

Ensuring that development is sustainable is the most serious problem facing Australia. If the world were like Norman Lindsay's magic pudding we could all cut and come again; we could all consume as much as we like for as long as we like. But, unfortunately, the planet is finite and its resources are finite. As Schumacher writes in *Small is Beautiful*: 'a business man would not consider a firm to have solved its problems of production and to have achieved viability if he saw that it was rapidly consuming its capital. How, then, could we overlook this vital fact when it comes to that very big firm, the economy of spaceship Earth?'

For development to be sustainable we need to ensure three conditions:

1. Rates of use of renewable resources do not exceed the rates at which the ecosystem is able to replace them. Australia's forests and fisheries are being depleted at an unsustainable rate.
2. Rates of consumption of non-renewable resources do not exceed the rates at which renewable substitutes are developed. Fossil fuels are not being made any more so there must come a time when they have all been consumed. We need to ensure that renewable sources of energy have been developed to take their place. We need to develop reliable, non-polluting, public transport.

3. Rates of pollution emission do not exceed the rates of the ecosystem's natural assimilative capacity. This applies especially to greenhouse gases.

A greater effort at recycling would help to conserve the Earth's resources but most changes involved in manufacturing processes are irreversible. White goods can be recycled as scrap metal but a better alternative would be extended producer responsibility legislation which would compel manufacturers to take back their products, thus discouraging built in obsolescence and dishonest advertising.

The problem of water shortages needs to be solved by reducing the waste of fresh water, which is simply allowed to flow back to the sea, and the recycling of grey water and sewage.

It is increasingly important that the generation of electricity should be from renewable and non-polluting resources. The mining of coal should be phased out in such a way as to cause the minimum disruption of the work force and take account of the atmospheric pollution caused by the burning of coal. Nuclear power may provide a relatively non-polluting stopgap but neither uranium, nor any other radioactive element, is a renewable resource.

The Australian economy has been greatly helped by the resources boom but we should be setting an example to the world. Pollution and climate

change take no account of national boundaries. We need to aim at zero population growth, and not, as did the previous government, encourage people to have children. It is the rich countries, like Australia, who have done most to damage the biosphere by wasteful and irresponsible activity and who therefore have a moral responsibility to take the lead in solving its problems.

- Ian Edwards

### *The Merry loaves of Windsor*

Heather Bentley will give another of her fascinating talks at the Glebe Library on **Saturday 3 May**, 1.30-2.45pm

She will talk about food of Shakespeare's time, and food mentioned by Shakespeare, which both illustrate social behaviour and enrich his plays. Discover what Falstaff and others were ingesting as they belched their appreciation: sweet potatoes, leek, fish, beaver tail, and sack, among many others. Heather will read Ben Jonson's invitation to supper with Shakespeare.

Bookings: 9298-3060, or email [askthelibrary@cityofsydney.nsw.gov.au](mailto:askthelibrary@cityofsydney.nsw.gov.au)



# Glebe News

## Street lights that brighten up our days

Having spent the last 15 years of my working life driving a taxi on the day shift in Sydney I have become used to getting out of bed early and after some problems arising from the late delivery of the *Sydney Morning Herald* I decided that, rather than having it delivered, I would walk to the news-agent's shop in Glebe Point Road and pick it up there.

Towards the end of January I noticed that some streetlights in St Johns Road between Ross Street and Glebe Point Road were still on after dawn when they were serving no useful purpose, as were lights in streets running off St Johns Road and in Ross Street between Bridge Road and St Johns Road. On Friday, 25 January, I brought this to the attention of Cr Robyn Kemmis who advised me to tell the manager of the Neighbourhood Services Centre, Nick Hespe. I did this at the earliest possible opportunity which, owing to the Australia Day public holiday, was Tuesday 29 January. On two subsequent occasions I reported the matter to two other members of the staff at the Neighbourhood Centre who rang Energy Australia in my presence. Mr Hespe also gave me a number to ring to complain to Energy Australia, which I did at least twice.

I had thought that it might help to complain to our local member of the State parliament but as I'm still waiting for a reply to a fax which I sent her in June last year (which I know was received at her office) I had second thoughts about that. As time dragged on and still nothing had been done, and also because she had recently been appointed Minister for the Environment, I thought that sending her a fax would at least do no harm. I did that on Monday 10 March and also spoke on that day to a woman in her office who assured me that she would forward my fax to the office of

the Environment Minister. Also on 10 March, after being given two wrong fax numbers, I sent a fax to Energy Australia and received a phone call later that day from one of their staff. Having still received no response from Verity Firth I sent her an email on 27 March with copies to Cr Kemmis and the three Greens MLCs.

If a problem arises with street lighting for which it is responsible, Energy Australia is legally obliged to fix it within 12 working days. If you type in Energy Australia in Google you will be told how environmentally friendly they are. One hesitates to accuse them of hypocrisy but at the very least they stand convicted of incompetence.

It is now 3.40pm on Monday 29 April. I have just returned from a short walk in St Johns Road in bright sunshine and the light in St Johns Road opposite Westmoreland Street is still on. I have no reason to believe that the problem is confined to my immediate neighbourhood so I suggest that if you have a similar problem you could report it by ringing Energy Australia on 1800 044 808. You may have more success than I had.

- Ian Edwards

## And another take on street lighting

Please contact the Secretary of the Glebe Society (snailmail PO Box 100 Glebe 2037, or email secretary@glebesociety.org.au) if you consider that the street lighting on the route you use—or, perhaps more important, would use if there was adequate street lighting—to walk home at night is inadequate.

- Margaret Sheppard  
Infrastructure convenor

## *Our built heritage – how safe is it?*

**A talk by the City of Sydney's heritage specialist, John Poulton**

John Poulton, heritage specialist for the City of Sydney, will discuss the future protection of our built heritage at a Glebe Society function on 4 June.

Proposed changes to NSW Planning laws have raised serious concerns about the protection of heritage buildings. As Glebe's identity is linked to its 19<sup>th</sup> century heritage streetscape and many individual heritage buildings, heritage protection for our suburb is of vital concern to Glebe residents.

John will discuss:

- what safeguards are in place for heritage items;
- what threats may exist; and
- what we need to do as a community to ensure that the heritage qualities of Glebe and Forest Lodge are not lost.

John will also comment on the status of a number of heritage buildings in Glebe, including *The Abbey*.

Join us for what should be a fascinating insight into Glebe's protected and threatened heritage and actions we should take!

Light refreshments will be served.

**Date:** Wednesday 4 June  
6.00pm – 7.30 pm

**Venue** (in Glebe): to be advised

**Cost:** \$10.00

*If you wish to attend, please complete the booking form enclosed with this Bulletin and return it **with payment** to PO Box 100, Glebe, 2037 before 30 May.*

# News and Notes

## Insensitivity on Glebe Point Road?

As you are probably aware, both the road and footpath on Glebe Point Road have been or are being dug up for the purpose of undergrounding electricity cables. The work is necessary for the purpose of improving capacity of supply. The work is the responsibility of Energy Australia. There will be no change to light poles or lighting until Stage 2 of the Glebe Point Road upgrade occurs north of Hereford Street. As a result of the work completed, inspection boxes have been installed at intervals in front of residential properties, although Glebe Point Road has just been gazetted as a Heritage Streetscape by the City of Sydney.



Photo: Jan Wilson

Whilst inspection access and junction points are necessary, it seems that the boxes have been placed insensitively and without respect for the character of the buildings and the streetscape. One example is the strip between Marlborough and Palmerston Streets, where there are four such boxes. As work continues to Leichhardt Street, more will appear. It is The Glebe Society's intention to lobby the authorities in order find a more sensitive solution. If you are or will be affected, your feedback would be appreciated.

Please forward your feedback including name, address and any comments to:

Jan Wilson (email: [janwil@bigpond.com](mailto:janwil@bigpond.com))

## Thirsty Thursdays

Members and friends are invited to meet for dinner in Glebe on the first Thursday of each month at 7pm, to eat and talk with other people who live in Glebe. We visit a different restaurant each month, usually alternating between Asian and European cuisines. Put these dates in your diary and come along.

On 1 May we will go back to an old favourite, the Italian restaurant *La Tavolaccia*, at 355 Glebe Point Road. There is no need to book.

The choice for Thursday 5 June is *Lien Vietnamese Malaysian Restaurant*, 331 Glebe Point Road. Please contact Cheryl or Bryan Herden on [herden@pacific.net.au](mailto:herden@pacific.net.au) or 9660 7371 by Wednesday 4 June if you would like to come.

On Thursday 3 July we will share an Indian meal at *Durbar*, on the corner of Glebe Point Road and St Johns Road.

Our April dinner was a victim of the Glebe Point Road upgrade, as the advertised restaurant, David Trees, was unexpectedly closed. I apologise to anyone who missed out.

- Edwina Doe

## May Bulletin

Bruce Davis will be looking after the next *Bulletin*. Please send any material for issue 4/2008 to [editor@glebesociety.org.au](mailto:editor@glebesociety.org.au) and not to Edwina's address.

## Welcome to new member

Carole Herriman was accepted as a member of the Glebe Society at the April Management Committee meeting.

We look forward to seeing her at future Glebe Society functions.

## Our Local Member of Parliament

State Member for Balmain, Hon. Verity Firth MP.

Office address: 112a Glebe Point Road, Glebe 2037.

Senior Electorate Officer: Christina Harlamb, ph 9660 7586, fax 9660 6112, email

[christina.harlamb@parliament.nsw.gov.au](mailto:christina.harlamb@parliament.nsw.gov.au)

## City of Sydney Councillors

**Lord Mayor:** Clover Moore MP

**Councillors:**

Phillip Black  
Hon Verity Firth MP  
Chris Harris  
Marcelle Hoff  
Robyn Kemmis  
Michael Lee  
Shayne Mallard  
John McInerney  
Tony Pooley



**For enquiries:** Please contact the City of Sydney on 9265 9333.

## Forest Lodge Public School

*Home of The Glebe Society Archives*

Phone 9660 3530



# For your diary ...

**Thursday 1 May**, 7pm – Thirsty Thursday – *La Tavolaccia*, 355 Glebe Point Road.

**Tuesday 13 May**, 10am – National Trust walking tour of Glebe, led by Carole McFadden. See the National Trust website for details.

**Wednesday 14 May**, 7.30pm – Glebe Society Management Committee Meeting – The Old Fire Station, 115 Mitchell Street.

**Sunday 18 May**, 11.00am-4:30pm – Wentworth Park Community Games Day. **See pages 1 and 4 for more information.**

**Wednesday 4 June**, 6-7.30pm – “Our built heritage – how safe is it?” – Talk by City Council heritage specialist John Poulton. Venue to be advised. See p.9 for more details.

**Thursday 5 June**, 7pm – Thirsty Thursday – *Lien Vietnamese Malaysian Restaurant*, 331 Glebe Point Road.

**Wednesday 11 June**, 7.30pm – Glebe Society Management Committee Meeting – The Old Fire Station, 115 Mitchell Street.

**Thursday 3 July**, 7pm – Thirsty Thursday – *Durbar* Indian restaurant, corner of Glebe Point Road and St Johns Road.

**Wednesday 9 July**, 7.30pm – Glebe Society Management Committee Meeting – The Old Fire Station, 115 Mitchell Street.

## Contacting

### The Glebe Society

#### Mail

All correspondence should be addressed to:

The Glebe Society Inc  
PO Box 100, Glebe NSW 2037

#### Website

The Society has a growing website ([www.glebesociety.org.au](http://www.glebesociety.org.au)) for the information of members and anyone with an interest in Glebe.

The website will only flourish if members use the site. Send contributions or comments to [webmaster@glebesociety.org.au](mailto:webmaster@glebesociety.org.au)

#### The Bulletin

We are glad to publish letters or articles on any matters of interest to Glebe, any topic raised in the *Bulletin*, or any issues relating to the Glebe Society. Write to the address above or email [editor@glebesociety.org.au](mailto:editor@glebesociety.org.au)

#### Disclaimer

Views expressed in this *Bulletin* are not necessarily those of the Glebe Society Inc.

#### Bulletin deadline

The next edition of the *Bulletin* will be published at the end of May.

The deadline for contributions is **21 May**.

## The Glebe Society Inc

Established 1969

#### Management Committee:

President	Jan Macindoe	9660 0208
Vice-president	Bruce Davis	9660 7873
Immediate Past President	Bob Armstrong	9660 4189
Secretary	Liz Simpson-Booker	9518 6186
Treasurer	Bruce Davis	9660 7873

**Committee Members:** Dorothy Davis 9660 7873 Simon Fraser 9660 7560  
Jan Wilson 9660 2698

#### Sub-committee Convenors:

All sub-committee convenors are *ex officio* members of the Management Committee

Arts, Culture and Media	Sue Ingram	9692 8534
Bays and Foreshores	Tony Larkum	9660 7030
Wentworth Park	Anne Fraser	9660 7560
Blue Wrens	David Mander Jones	9552 4172
Environment and Open Spaces	Andrew Craig	9566 1746
Glebe against Global Warming	Bill McCarthy	9660 5119
Heritage	Dianne Gray	0417 434 814
Infrastructure Defect Reporting	Margaret Sheppard	9660 4121
Membership	Cheryl & Bryan Herden	9660 7371
Planning	Neil Macindoe	9660 0208
Transport and Traffic	Chris Hallam	9660 3670

#### Adopt-a-Park Contacts:

**Foley Park:** Bobbie Burke (9692 0343) **Kirsova:** Fay & David Mander Jones  
**Paddy Gray Park:** John Gray

#### Other Contacts:

Archivist	Lyn Milton	9660 7930
Blackwattle Cove Coalition (BCC)	Anne Fraser	9660 7560
Bulletin Editor	Edwina Doe	9660 7066
Event Coordination	Dorothy Davis	9660 7873
History of Glebe	Max Solling	9660 1160
History of the Glebe Society	Jeanette Knox	9660 7781
Liaison with CityRags	Bob Armstrong	9660 4189
Liaison with CoGG	Bruce Davis	9660 7873
Liaison with FLAG	Jan Wilson	9660 2698
Publicity	Sue Ingram	9692 8534
Website	Vicky Marquis	9552 2592

## In this issue

- Forget the Olympics! Join in "The Games" at Wentworth Park on Sunday, 18 May—pages 1 and 4
- Anzac Day 2008: Stories of the boys from Forest Lodge—pages 1-2
- Expanded planning goals for 2008-2013—page 5
- Planning matters—page 6
- Who lived in your street?—pages 7-8
- Our built heritage: how safe is it?—page 9

The GLEBE SOCIETY Inc  
PO Box 100 Glebe 2037



POSTAGE  
PAID

### Membership of the Glebe Society

<b>Individual</b> member	<b>\$45</b>
<b>Joint</b> (2 people, one address)	<b>\$55</b>
<b>Household</b> (more than 2 adults and/or children, one address)	<b>\$60</b>
<b>Concession</b> (student or pensioner)	<b>\$20</b>
<b>Institution or corporate</b>	<b>\$110</b>

Download a Membership Form from our website ([www.glebesociety.org.au/AboutTGSI/Membership/Membership\\_application.pdf](http://www.glebesociety.org.au/AboutTGSI/Membership/Membership_application.pdf)).

Or write to PO Box 100, Glebe, 2037 or phone the Secretary, Liz Simpson-Booker, on 9518 6186.

If you have a matter that you would like to discuss with the Management Committee, please phone the Secretary.

### Community Contacts

**Manager-Neighbourhood Services Centre:** Glebe, Forest Lodge, Camperdown, Ultimo & Pyrmont: Nick Hespe.

**Email:** [nhespe@cityofsydney.nsw.gov.au](mailto:nhespe@cityofsydney.nsw.gov.au)

**Glebe Town Hall Office:** 9298 3190 8.30am-5.30pm Mon- Fri

**Sydney City Council Customer Service**

**Telephone (24 hours):** 9265 9333

**email:** [council@cityofsydney.nsw.gov.au](mailto:council@cityofsydney.nsw.gov.au)

**website:** [www.cityofsydney.nsw.gov.au](http://www.cityofsydney.nsw.gov.au)

**Glebe Point Road upgrade contact (24 hrs):** Grant Donohue 0414 687 101, [grant\\_donohue@gmwurban.com.au](mailto:grant_donohue@gmwurban.com.au)

**Dumped Shopping trolleys:** Trolley Tracker 1800 641 497

**Waterway Garbage:** NSW Maritime response - 9563 8592