



The Great Wake

Glebe Society members and friends gathered for The Great Wake on May 15 at Blackwattle Bay Park. The wake marked the sad loss of many trees in the park between the bay and several apartment blocks. Whereas those in these apartments had experienced filtered views of the bay the death of these trees now made the view stark and open.

Thirty or so gathered on a bleak autumn day, with grey clouds, and threats of rain. It was one of those days that promised winter. Nonetheless spirits were high as people met, chatted, drank and ate a superb barbecue organised by Kevin Treloar. John Gray called the meeting to order with a parody of Mark Antony's speech from *Julius Caesar*. He observed that Antony had equivocated over Caesar's guilt, which seemed appropriate in the current circumstances. He then read from *The Great Shame* by Tom Keneally. The author had apologised for not being able to attend and expressed his sympathy with Glebe's loss. Keneally's book gives a delightful insight into Irish wakes as they were, 'before the dead hand of the Church was upon them'. A dead wall was drawn between the corpse and the immediately bereaved and the rest, 'who got on with things'. Things included lascivious games which were described. Despite John's encouragement none of the audience took up his suggestion to commence these games in Blackwattle Bay Park, on this bleak day.



John Gray reads from *The Great Shame* by Tom Keneally.

Photo: Edwina Doe

Bob Armstrong then read from Michael Leunig's work, *A Common Prayer*, which had been provided by Liz Simpson-Booker. Among other things this text said: ... *Earth is our mother and nature's law is our father, our protector. ... Father do not forgive them for they know precisely what they do. Those destroyers of earth's beauty and goodness, those killers of nature, do not forgive them. Those poisoners. Do not forgive them.*

The Wake continued, with those attending signing the title page of Tom Keneally's book, which we will copy and send to Tom as thanks for his solidarity.

- John Gray

City of Sydney CEO meets with COGG

On Thursday 19 May, representatives of the Coalition of Glebe Groups (COGG)* (Andrew Craig, Glebe Resident Action Group; Susan Cleary, Glebe Point Residents Group; Peter Lean, Glebe Chamber of Commerce and Bob Armstrong, Glebe Society) met with Peter Seamer, CEO – City of Sydney. Robin Hobbs, Executive Manager, Chief Executive Office and Monica Barone, Director of Community Living, were also in attendance.

The hour went quickly. However, we covered a lot of ground, mainly because it was soon clear that Peter Seamer has an intimate knowledge of Glebe and a strong personal appreciation of its special place in the city. His description of the strengths and weaknesses of Glebe meshed with those voiced by the COGG Group at its previous meeting. The draft Charter for COGG was presented to Peter Seamer who indicated that such a coalition of Glebe groups would facilitate the consultative process on Council initiatives. However, because many members of the community do not have an affiliation with the member groups of COGG, other community

consultation will continue. A number of the issues from the recently developed 'Glebe and Forest Lodge Priorities for 2005 and Beyond' were discussed.

The commercial aspects of Glebe Point Road were canvassed broadly, noting both the positive aspects of clustering of businesses and the spread of some others along Glebe Point Road, St Johns Road and Ross Street. The Council has followed up the suggestion of an improved link between Glebe Point Road and the Broadway Shopping Centre via Minogue Park. However, the matter to be further addressed is the connecting land owned by the Broadway Centre. Crime and safety in the area were briefly discussed and it was acknowledged that greater cooperation was needed, on an ongoing basis, from Government Departments like DOCS.

The impact on traffic in Glebe with the imminent opening of the Cross City Tunnel

Continued on next page ...

* The draft COGG Charter is published on page 2

COGG starts its work

It's good to be able to report that the meeting on Thursday 19 May of COGG members, together with the facilitators employed by the Chamber of Commerce, cleared away most of the confusion as to where this process is heading.

The facilitator's task is to produce a 'strategic marketing plan for Glebe' for the Chamber. In doing this they are consulting with the other groups represented in COGG. The plan will be developed in stages. Under the Chamber's Memorandum of Understanding with the City Council, a 'positioning statement' needs to be developed by 30 June. Should this be regarded as satisfactory, it is hoped the Council will fund work on the development of implementation strategies.

The 'positioning statement' is intended to describe how Glebe should be positioned

in the marketplace. The workshop discussed aspects of Glebe that we thought would be relevant to three 'customer' groups – Glebe residents, visitors from elsewhere in Sydney and Australia, and international visitors, and came up with a number of ideas that eventually will be distilled into marketing slogans, logos etc.

It is important to understand that the process is aimed at developing a marketing tool and not a strategic plan. It has implications for Glebe Point Road revitalisation in particular and the Glebe Society in general. This said, the morning's meeting suggested that all groups represented in COGG share many common values and aspirations for Glebe, and the marketing plan will be developed against this background.

- Bruce Davis



Draft Charter of the Coalition of Glebe Groups (COGG)

Membership

A coalition of independent stakeholder groups, comprising the Presidents/ Chairpersons and Vice-Presidents (or their nominees) of:

- The Glebe Society
- The Glebe Chamber of Commerce
- The Glebe Community Action Group
- The Glebe Point Residents Group

It is intended that other community groups from Glebe and Forest Lodge should be able to tap into the coalition as the need arises or the issue demands.

Aim

To consult, from time to time to,

- identify priorities for Glebe informed by the various strategic plans,
- finalise proposals, and
- work with the City of Sydney and other authorities to bring about the implementation of these strategies.

Process

Chairing of meetings shall be by rotation amongst the Groups.

Decision making shall be by consensus.

Representations from COGG should be the outcome of unanimous agreement.

Administrative responsibilities shall be shared, based on discussion and resources.

(Draft dated 19 May 2005)

... Continued from previous page

(CCT) was raised and the Council will examine its own surveys and capacity to do further monitoring.

The allocation of funding in the new financial year was confirmed for the Foreshore Walkway and Bellevue (\$15m). Plans for the upgrading of Foley Park were considered to be progressing well.

The many problems associated with the activities of other authorities in and around the Rozelle and Blackwattle Bays were raised. The need for coordination in planning was agreed, a particular example being the planned uses of the southern end of Blackwattle Bay in relation to the Foreshore Walkway and any future upgrading of Wentworth Park. In this regard, Peter Seamer advised that

there is a new Trust to manage the affairs of Wentworth Park to which he has been appointed.

Currently, the Council is consulting with both business and community groups on the draft Business and Community Partnership Program (BCPP) which will provide for the funding of business initiatives. The Glebe Society will be represented at a BCPP forum, on a date to be announced. There are other funding programs available for community initiatives.

The Glebe priorities were well received, however it was recognised that there are many competing funding bids from the various City areas, and therefore we need to pursue actively our funding priorities.

- Bob Armstrong & Susan Cleary

Glebe Foreshore Update

An official update is to be issued by Council on progress on the Foreshore. However, unofficially we have been advised that the City is close to inviting public participation in the process to set the range of permissible uses for historic Bellevue. Future updates will advise details of this process.

Meanwhile:

a) work on the Anchorage site (Stage 2) will commence late 2005 following the release of the final detailed plans for comment.

b) work on Bellevue (Stage 3) will also commence late 2005. A DA for the refurbishment of the building is currently being assessed.

- Jenny Underwood

Unfiltered Tunnels Poison People

The Lane Cove Tunnel Action Group Inc has sent us the bright yellow stickers enclosed with this Bulletin. Please make good use of them.

Lane Cove isn't alone in being concerned about tunnels. Our own Cross City Tunnel will be open soon, so we must all be vigilant.

FLAG (Forest Lodge and Glebe Coordination Group)

This group was formed in 2004 to work as a communication link between all the various groups and agencies operating in Glebe/Forest Lodge.

FLAG (Forest Lodge and Glebe Coordination Group) was formed in 2004 and is a forum for improving communication between member groups. It will support and link current initiatives by:

Encouraging communication between community groups, business and government agencies in the local community

Promoting Glebe/Forest Lodge as a positive place to live and work

Supporting local initiatives by gathering skills, knowledge and expertise from all stakeholders.

FLAG is made up of residents from the local community, along with representatives from community services, local and state agencies.

Terms of Reference

To aid coordination of community initiatives

To facilitate cooperation between the sectors

To support and promote the work of stakeholders

To maximise opportunities to attract funds and resources to strengthen the community

To act as a consultative forum for plans and matters relating to Forest Lodge and Glebe

To increase local knowledge of community initiatives in Forest Lodge and Glebe

To support community action on major issues of concern for Forest Lodge and Glebe

One representative from each group attends the meetings, which are held bi-monthly.



Current members are:

City of Sydney
Department of Housing
Glebe Area Tenants Group
Glebe Chamber of Commerce
Glebe Child and Family Interagency
Glebe Community Action Group
Glebe Community Development Project
Glebe Faith Community
Glebe Point Residents Group
Glebe Police
Glebe Youth Service
Neighbourhood Tenant Representatives
The Glebe Society (representative is Jan Wilson)



Letter to the Editor

Dear Editor

Noela and Evan Whitton (April *Bulletin*, page 8) are not the only members concerned about aspects of The Society's Environment Policy. Several people have spoken to me about the appropriateness of The Society's stance on shopping trolleys.

While it is true we would all like to see them off the streets, there is some concern as to how this should be achieved. I think it is fair to say people who have cars, or who do not have cause to use the Broadway Centre, often have little appreciation of the difficulties of those less advantaged. I have often watched in amazement while residents of Glebe and other suburbs nearby, often elderly people, struggle to manoeuvre these ungainly carriers along the footpaths, often for considerable distances. I find these trolleys difficult enough within the supermarkets themselves, let alone in the streets!

Surely the best solution is to focus on appropriate alternatives, rather than simply banning their removal from the Centre (after allowing it for several years). One strategy would be to provide a cheap delivery service (perhaps available to pensioners at nominal cost)

Adequately promoted, this would obviate the need to remove the trolleys in most cases.

Another strategy is to provide a better trolley. When we need to do a lot of shopping without our car we use a folding, wire frame, four-wheeled trolley we bought at Paddy's Market for \$20 (the cost may have increased). These could be made available at cost from the supermarket (and fruit market) themselves, and at a reduced rate for pensioners. There are two sizes available: the larger one can hold at least as much as a fully-laden supermarket trolley, and both are much easier and lighter to handle.

Given the cost of collecting and replacing supermarket trolleys from surrounding suburbs, I think it likely the supermarkets, as well as their customers, would come out well ahead.

- Neil Macindoe

A trial of personal trolleys - are they the solution?

Jenny Underwood, our Glebe Place Manager, tells us that the Neighbourhood Service Centre is going to conduct a small trial of 20-25 domestic (personal) shopping trolleys, to test their potential for reducing the number of abandoned trolleys in Glebe.

Two different types of trolley will be trialled - two wheels and four wheels.

Jenny needs some volunteers; local residents who would find a personal trolley useful to get their shopping home. If too many people volunteer, names will be 'drawn out of a hat'.

Participating residents will be asked to provide feedback to Council after the eight week trial on the performance of the trials in regard to frequency of use, practicality, sturdiness etc.

Information will be supplied to the Waste Management Unit with recommendations as well as being used to evaluate the ongoing benefits of such a program in Glebe.

To volunteer, phone Jenny Underwood on 9298 3191.



Brelco Building, 48-64 Wentworth Park Road

This Art Deco industrial building next to Glenmore Meats was an engineering works built in the 1920s by the Sutton family. Like many commercial and industrial buildings in Glebe its significance was not noticed by the first researchers, who concentrated mainly on domestic and civic architecture.

Quite fortuitously John Sutton, son of the founder, is a friend of my sister Patricia, and when I contacted him over another matter he produced a mass of material related to the engineering works, mainly photographs, which were copied under a scheme then operated by Leichhardt Council. I believe these were transferred to the City along with other items of local history.

As a result I was then able to ask for this building to be listed as a Heritage Item. The design of its roof, in particular, is believed to be the first of its kind in Australia. The company made the first mechanical petrol bowlers. (These were later superseded by American-designed electrically operated ones, with which we are now familiar.)

Until recently the Brelco building was owned by the Department of Housing. In 2000 Leichhardt Council approved a residential conversion with 31 dwellings and 34 car spaces. In May this year the

current developer applied to demolish and reconstruct the west and north walls. The Society has written asking for as much as possible to be retained, and for the original forms to be respected.

Nag's Head Hotel, 162 St Johns Road

This is the latest Glebe pub to apply for an extension to its premises, in this case to expand its gaming room (poker machines) into the pizzeria next door. The proposal has attracted a lot of objections from nearby residents, and as on previous occasions The Society is supporting them.

Tramsheds, Harold Park

The Society has paid Ted McKeown considerable sums to undertake research on this important site, now proposed for residential development. Ted has done the research, partly into titles and partly into financial transactions and changes in legislation, with characteristic thoroughness and attention to detail. The Society has passed his research on to the City, and no doubt the City's lawyers will find it very valuable if and when the proposal goes to Court.

Coal Unloader, Bridge Road

There is some discussion about what to call this industrial structure, but I will stick to the one we are familiar with for

the time being. It was the site where coal was unloaded to supply the Pyrmont Powerhouse (now the Powerhouse Museum) that generated electricity for inner city trams.

Members of the Bays and Foreshores subcommittee met with representatives of the Sydney Harbour Foreshore Authority on Thursday, 12 May. The Planner, Shayne Watson, described a proposal for Stage 1 Development Application that reinstated the gantry removed without consent some years ago, and proposed a largely transparent structure within the wooden framework and projecting one storey above.

As a result The Society has written to SHFA asking for the structure to be made a Heritage Item, for it to be correctly restored, for the visual link between Wentworth Park and the foreshore to be retained, and for a substantial waterfront walk to be created.

Bicentennial Park

Today, as I was writing in the Park (a very attractive spot in the cooler months) I noticed a firm called McDermotts drilling and collecting soil samples, presumably for analysis. As if this were not entertainment enough, I was treated to the spectacle of a tree-climbing dog (it looked like a Labrador).

- Neil Macindoe.

Hartford House and its content for sale

My house is full of 'stuff', objects which I have found or bought during the last 30 years or so, including over 200 glass and ceramic electrical insulators. So when I read that the contents of *Hartford House*, 244 Glebe Point Road, including 'collectibles', were on view prior to their sale by auction, I just had to see them.

I am green with envy of the man who has collected so many interesting and beautiful objects, and kept them in such elegant surroundings. But I also feel sorry for him - how could he bear to sell them and move to a smaller house?

Hartford is a house on a grand scale, which appears to have its original

woodwork and fittings. The elegant furniture suits the house. Almost every room is lined with glass fronted cabinets filled with an eclectic display of cherished objects. The walls are hung with interesting paintings. The upstairs rooms house an amazing collection of model trains, in their original boxes.

Kate and Bernard Smith, in *The Architectural Character of Glebe* (first published in 1973 and reprinted with corrections in 1989) wrote this description of the house:

Hartford was built in 1899 for Dr Peter Magnus. It is now the Presbyterian Church Centre, Glebe. ... It has taken advantage of its corner position. An ample but rather squat turret is built into the south-eastern corner. It is of rusticated stone on the ground floor, with

wooden shingles above, and topped with a curved, conical roof of lead. This love of natural textures of different materials is very much a feature of the Federation style. There is a profusion of receding gables back from the Glebe Point Road entrance to the house. ... Oval windows (*oeil de boeuf*) open into the wide verandah. The use of shingles and rough-cast work within the gables is another feature of its Federation style.

Max Solling says that the Presbyterian Church bought the house when they abandoned the church, now *The Abbey*, in Bridge Road. They held services there until 1977.

We hope that *Hartford* continues to be loved and enjoyed by its future owners.

- Edwina Doe

'Plorn' Dickens (1852–1902)

By Lyn Collingwood

Staying at Toxteth Mansion in the late 1890s was Edward Bulwer Lytton Dickens, Charles Dickens' tenth and last child, who had settled in Australia some 30 years earlier. The 1898-1900 Glebe electoral rolls listed his occupation as 'gentleman', a job description which implied either inherited wealth or unemployment. In Edward's case it was the latter. Following his political defeat in the 1894 election – he had served two parliamentary terms as MLA for Wilcannia – he spent years looking for work, supported by his wife, a 'type-writer' in Martin Chambers, Moore Street (now Martin Place).

Edward's fellow lodgers included Isaac Drummond Smith, a draper, and William Wiley, a land valuer. Camillo Marina, an experienced hotelier, managed the property and James Taylor did the gardening. Edward may have used the new-fangled telephone to book his accommodation. Toxteth Mansion was an early subscriber: number 60 through the Glebe Exchange.

Each Twelfth Night Charles Dickens wrote and directed little plays in which his children performed. In one of these he heralded 'the first appearance on any stage of Mr Plornishmaroonigoonter, not yet 3'. The contraction of the name stuck. His favourite son was, according to Charles, 'a docile, amiable boy of fair abilities but sensitive and shy... a queer wayward fellow with an unformed character'. When Plorn embarked on his long journey to Australia his father gave him words of advice: 'Never take a mean advantage of anyone in any transaction and never be hard upon people who are in your power'. The separation was painful. 'He went away, poor dear fellow, as well as could possibly be expected. He was pale and had been crying. Just before the train started he cried a great deal, but not painfully. These are hard, hard things ... God bless him.'

What motivated a sensitive 16-year-old to leave a comfortable home for an uncertain future in a country which took two months to reach? His strong-willed father probably hoped it would be the

making of him. He himself had earned a living at a much earlier age, and thought that the 'freedom and wildness' of Australia would suit Plorn's temperament. The boy was unhappy at school; keen on the outdoors, especially riding; other brothers had joined the navy, the East India Company, Bengal Mounted Police and Canadian Mounties. Charles himself travelled widely and had planned a lecture tour of Australia. Most importantly, Plorn had a brother, seven years older, already there to meet him.

In 1865 Alfred D'Orsay Tennyson Dickens left England and a number of unpaid bills, arriving as an assisted immigrant on the *London*, with letters of introduction. In December 1868 Plorn landed in Melbourne on board the *Sussex*. He had sailed on his own and unassisted.

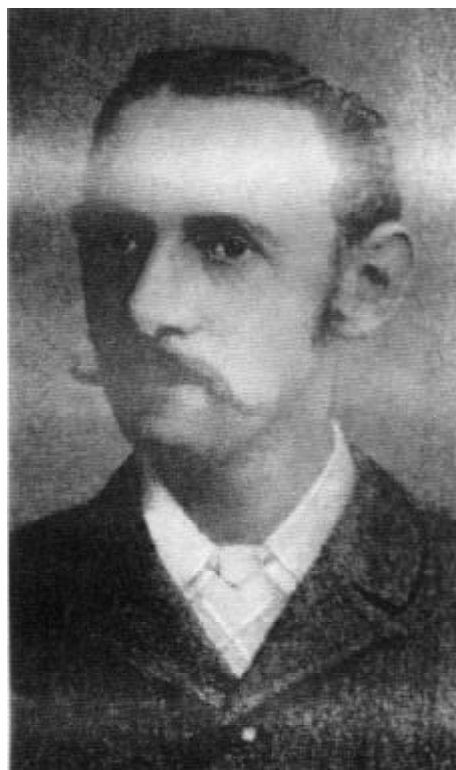
A job was already lined up for him. Still three months short of his 17th birthday, he took off for Eli Elwah near Hay but was back in Melbourne 10 days later, claiming the station manager was 'no gentleman'. His second placement, at Momba station near Wilcannia, was more successful. After the death of his father in 1870 Plorn's maternal aunt - Charles

left nothing to his wife from whom he had separated after 22 years of marriage - sent a regular allowance. By 1874 he was a JP, a part-owner of Yanda station, and manager of Mount Murchison station on the Darling River. He captained a cricket team, and raced his stud horses Greytail, Tam O'Shanter, Dusky Morn and Snowdrop. Women were in short supply on the Darling and Plorn contemplated going back to England to look for a bride, but he met and married Constance Desailly whose father owned Netallie station. They had no children.

Charles had worried about his son ('he always writes as if his present life were the be all and end all') and by the time of his marriage in 1880 things were beginning to unravel. Plorn sold his share in Yanda, mismanaged during a period of bad seasons, and resigned from Mount Murchison which was taken over by Elder Smith and merged with Momba. After temporary employment as a sheep inspector, he went to Collins Street, Melbourne, where he established E B L Dickens & Co., a stock and station agency. By 1883 he was back in Wilcannia, setting up a branch office there and leaving the city business to his brother Alfred. (Alfred ended up in the USA where he died in 1912.)

Despite continued drought, Plorn made some sales and became friendly with local squatters who were concerned about the 1884 Land Act which threatened to break up their holdings. He was elected honorary secretary of the Land Bill Opposition Society and in 1886 was appointed government inspector of runs in the Bourke district. He was also a member of the municipal council, the Licensing Board and the Moorabin Masonic Lodge. Nevertheless, he had money problems. Appeals to his aunt for more funds were usually denied; in 1884 his brother Henry sent him £800, a debt which was never repaid.

Financial relief came in March 1889 when he first represented Wilcannia in the NSW Legislative Assembly which had just voted an annual salary of £300 for its members. A Protectionist, Plorn in his maiden speech outlined his concerns.



'Plorn' Dickens

Continued on next page ...

... Continued from previous page

Like it or not, he said, every man, woman and child in his 'shamefully neglected' electorate was dependent on the squatting interest, the only industry in the area. The Land Act should be amended, especially taking into account bad seasons, the rabbit pest, and ever-increasing rents. Urban MLAs could not comprehend the hardship brought about by drought. In 1888, he noted, Wilcannia had some three inches of rain, less than Sydney averaged in a month. He also pushed for the extension of the railway line. Wilcannia was a port subject to the vagaries of the Darling and steamers were often stranded in the dried-up riverbed for weeks on end. Land transport from Broken Hill was expensive.

Before he reached the substance of his speech, Plorn touched on concerns of a more personal nature, a newspaper claim that he was elected 'on account of the great name I bear, and which I am proud of ... You cannot get two Charles Dickens in one generation. The article was a nasty attack on me – a young man without any trial, and the inference was that I was a fool. Well, whether I am a fool or not, I am only at the beginning of my political career, and I trust that I will prove to this House that I am not a fool.' Naively perhaps, he deplored the standard of debate in the chamber: 'I was rather surprised and disgusted to hear so many personalities indulged in. Hon. members on both sides raked up what had occurred four, or five, or six years ago...Let the past go.'

During parliamentary sessions Plorn stayed at a hotel in Gresham Street, going home during recesses. There was little he could do for his electorate. His entry into politics coincided with the second biggest economic depression in Australia's history compounded by drought. Unemployment was high as was industrial unrest, life savings were lost in bank crashes, and bankruptcies were rampant. From the 1892 miners' strike at Broken Hill a figure emerged who was to spell the end of Plorn's political career.

Jailed as a strikeleader and hailed as a working man's martyr, Richard Sleath stood for and won Wilcannia in 1894, a seat he then held for ten years. A quarryman, powerful in both physique and voice, Sleath dominated his opponent who argued for moderation and arbitration. Plorn was not helped either

by a long letter by 'X' published in the *Barrier Miner* which again attacked him for his famous connection: 'the most interesting thing about you is that you are the son of Charles Dickens ... some folks have been led to exclaim 'That Charles Dickens's son!' ... though your father was only 40 years old at the time of your birth, he had almost worn himself out. He spoke of himself as a 'dull blade' from which it was hard 'to grind out sparks'.

The next few years were restless ones for Constance and Plorn who spent time with her sister near Broken Hill and in Tasmania before moving to Glebe. In 1896 news came that both his sister Mary and Charles junior had died (other siblings Walter, Francis, Sydney and Dora were already dead). Plorn invested in shares and applied for positions as far afield as Western Australia. Letters of support failed to secure the post of Secretary to the Department for the Protection of Aborigines in that State.

In June 1900 he was appointed a conditional purchase inspector, visiting country properties from his home base at the Criterion Hotel, Moree, checking for such things as ringbarking and prickly pear. It was in the Criterion during a week when the daytime temperature range was 80 - 105 degrees that he died of consumption on 23 January 1902, leaving debts four times the value of his assets. He was 49. Constance, who had nursed him through his long illness, died in Melbourne in 1914. She was 54.

By 1852, the year of Plorn's birth and the publication of his masterpiece *Bleak House*, Charles Dickens was at the height of his powers. While he amassed a fortune, his children Plorn, Charley, Walter, Alfred and Sydney could have all been models for Mr Micawber. Nearly all the children were saddled with names acknowledging Charles' many literary friends. Plorn's godfather was Edward George Earle Bulwer Lytton, at one time secretary of state for the colonies but better known in Victorian times as a novelist and playwright. He became friendly with Dickens through amateur theatricals in which Dickens acted. Lytton, like Dickens, separated from his wife. Although Alfred stated that the children always loved their parents equally there is no doubt that the bitter break-up of Charles and Catherine Dickens affected their offspring, not least of all Plorn, then aged six.

- Lyn Collingwood

Owed to a Spell Checker

Eye halve a spelling checker, it came with my pea see.

It plainly marks four my review miss steaks eye kin knot sea.

Eye strike a key and type a word and weight for it two say,

Weather eye am wrong or rite; it shows me strait a weigh!

As soon as a mist ache is maid, it nose bee fore two long

And eye can put the air or rite; its rare lea ever wrong.

Eye have run this poem threw it. I am shore your pleased two no

Its letter perfect awl the weigh. My checker told me sew.

(This is John Gray's gift to his doctoral candidates)

Cats ...

The Cat Protection Society is offering a \$40 special for vaccination against feline enteritis and two types of cat flu. All fees include collection and return of your cat to your home. For information, contact the Cat Protection Society on 02 9519 7201.

... and dogs

The City is to be congratulated for making available at no cost POOch Pouches to encourage dog owners to pick up their dog's indiscretions when out on a walk. This, in turn, helps protect our waterways. Each zippered pouch contains ten plastic bags and a split ring to be attached to the handle of your dog lead. The pouch also provides you with a convenient storage spot for keys and loose change.

Glebe Society members, neighbours and friends in Glebe are reminded that the Glebe Neighbourhood Service Centre has plenty of City of Sydney POOch Pouches - and they are free.



Radio 2RPH, 1224 AM

Glebe is the home of a great variety of services and organisations. One of them is Radio for the Print Handicapped of NSW, which has been broadcasting in Sydney since April 1983 and from Glebe since May 2000.

There are more than 600,000 people in Sydney who can't see, handle or understand printed material. Without a radio reading service, they wouldn't be able to access a wide range of information of vital importance to them in their daily lives. 2RPH provides these people with the opportunity to know what's in the daily newspapers, or in magazines and books – and they can access all this information simply by switching on their radio.

The station operates from the St Helens Community Centre in Glebe Point Road, where three studios and a production suite are in operation from 6am to around 11pm each day. Volunteers prepare, produce and present all the programs. Items from the day's newspapers are read live. The major live reading sessions consist of the news, features and comment in the daily newspapers: *The Sydney Morning Herald*, *The Australian*, *The Daily Telegraph*, *The Australian Financial Review*, *The Sun Herald* and *The Sunday Telegraph*.

Some programs, including readings from magazines and other publications, are pre-recorded by volunteers. Many of these recorded programs are re-broadcast by RPH stations in all Australian capital cities and the Radio Reading Service in New Zealand. Other volunteers carry out office and reception tasks.

The station was originally intended for the vision impaired, elderly and infirm, but these days many English as a Second Language (ESL) teachers instruct their students to tune in and follow the printed word on air. Many people also listen to 1224 AM while they are driving.

- **Edwina Doe**

I must admit to a conflict of interests here - I am a volunteer at 2RPH. What other organisations do members know about?

Monster Book Sale

The Friends of *Benledi* and Glebe Library remind us that their Monster Book Sale will be held on Saturday 4 June, 9am - 4pm, at *Benledi*, 186 Glebe Point Road. Donations of books in good condition can be dropped off at 186 Glebe Point Road on Friday 3 June, between 9am and midday.

All funds raised go to the Glebe Library, so come along rain or shine and bring your friends.

There will be a collection box at the Book Sale for unwrapped birthday presents for disadvantaged children aged 5 to 12 who attend the Centipede out of school care. Please give generously.

The Glebe Art Show 2005

The aim of this art exhibition is to focus attention on artists living and working in the Glebe area, with support from Glebe businesses.

Prizes range from \$250 to \$3,000.

Works are to be delivered on Wednesday 29 June and will be on exhibition at *Benledi* from Saturday 2 July to Sunday 10 July.

The official opening will be on Friday 1 July at 6pm.

For more information contact Robin Lawrence on 9660 8036.

Cheese and Wine Tasting

A cheese and wine tasting will be held at the Glebe Rowers Club Boatshed on Friday 17 June, 7.30 - 10pm. A guest expert will talk about the wines on offer and how the unique characteristics have developed in those particular wines. Kevin Treloar, a caterer and cheese lover, will discuss the history, method and characteristics that make up the range of cheeses that will accompany the wines. The Glebe Rowers Club, at the end of Ferry Road, has magnificent views across the fish markets to city. It lends itself perfectly to such an evening. Cost is \$25/\$15. Please feel free to invite non-members to this Glebe Society gathering.

RSVP by 10 June - see booking form.

Foley Park Update

On 29 April, the Foley Park Working Group submitted its comments on the Council's draft Plan of Management for Foley Park.

The group has commented on each of the proposed 16 areas of change located on the Concept Master Plan and provided an overview of the draft Plan of Management.

The group is hoping for an opportunity to discuss their suggestions with the study team at Environmental Partnership.

For more details of the Submission, phone Bobbie Burke on 9692 0343 .

Reducing Through-Traffic in Glebe

A Public Forum

7.30pm, Wednesday, 8 June 2005

Glebe Town Hall, St Johns Road

Are you concerned about the amount of through-traffic in Glebe?

Do you know what the impact of the Cross City Tunnel will be?

How will the 'Broadway Streetscape Upgrade' impact Glebe?

Would you like to see Wentworth Park extended to the harbour?

Do you have any ideas about reducing through-traffic in Glebe?

Then join other concerned residents at a Public Forum.

Hear what local councillors have to say.

See what is planned for the Glebe area.

Speak to others about what you think.

For further information, contact Conrad Kerin on 9571 5550

News and Notes

Thirsty Thursdays

All members are invited to meet for dinner in Glebe on the first Thursday of each month, to meet and eat with other people who live in Glebe.

After trying out many of the hotels in Glebe, we have decided to explore the resaurants in Glebe. On Thursday 2 June we will meet at La Tavolaccia Garden Restaurant, 355 Glebe Point Road (near the Toxteth Hotel). Please ring me on 9660 7066 so I can book the right size table.

- Edwina Doe

Welcome to New Members

The following people were accepted at the May Management Committee meeting. We look forward to seeing them at future Glebe Society functions.

Carol Marra

Ken Yeh

Wanted:

A volunteer maths coach for a young person whose brother was the basketballer of the year. The family lives in Glebe.

He is a Year 10 student who is very keen and requires assistance with maths coaching. This would be voluntary assistance for a boy who is very keen to improve his education. Anyone who could help please contact Jan Wilson for further information

janwil@bigpond.com.au or 9660 2698 (H)

Wire Baskets

Following the installation of some new kitchen cupboards, I find myself with a surplus of wire storage baskets in racks. They are available free to a good home. Phone Jeanette for details on 9660 7781.

The Sargent Family

My name is Karlene Dimbrowsky and I am a member of the Hills District Historical Society.

I am currently researching for a book on the Sargents Family of Sargent's Pies Fame and was wondering if any of your members had any information that they would like to contribute on either the family or the business.

My contact details are:

Karlene Dimbrowsky

Sargent's Pies Research

PO Box 373

Castle Hill NSW 1765

garthowen@bigpond.com.au

Sydney Italian Festival - May 20 - June 20

Enjoy food & wine, film, design, art, culture & music, plus the 59th Anniversary of Italian National Day Celebrations on 29 May.

Celebrate all things Italian on Sunday, June 5 from 11 am to 5 pm at the site of Sydney's first little Italy in Stanley Street, East Sydney as part of the Primo Italiano event.

www.sydneyitalianfestival.com.au

City of Sydney Libraries

A new library catalogue, accessible at Glebe, Haymarket, Kings Cross, Town Hall and Ultimo libraries is also online at www.library.cityofsydney.nsw.gov.au. This means that you can now renew your loans online 24hours a day; check items you have borrowed; search the catalogue from home; reserve items online 24hours a day; make inter-library-loans from home; and limit searches to a specific collection, eg CDs, DVDs etc. and their location. This is a great new facility for residents. Look for the blue brochure when next in your library.

2005 City of Sydney Garden Competition

If you are a keen gardener, do your bit for Glebe and enter the City's Garden Competition. Entry forms are available from the Glebe Town Hall and the Library.

Entries close on Monday 15 August. Judging will commence on 23 August and continue for approximately three weeks. Prizes will be presented by Jamie Drurie at the launch breakfast of Sydney in Bloom in the Domain on Wednesday 21 September.

City of Sydney Councillors

Lord Mayor

Clover Moore MLA

Councillors

Philip Black

Verity Firth

Chris Harris

Marcelle Hoff

Robyn Kemmis

Michael Lee

Shayne Mallard

John McInerney

Tony Pooley

Phone the Town Hall, 1300 651 301, for contact details.



Forest Lodge Public School

Home of The Glebe
Society Archives



Principal: Mrs Elva Salter Phone 9660 3530

For your diary ...

Thursday 2 June, 7pm - 'Thirsty Thursday' - Dinner at La Tavolaccia, 355 Glebe Point Road.

Friday 3 June, 9am - 12 noon - Deliver your books to *Benledi* for the Book Fair.

Saturday 4 June, 9am - 4pm - Monster Book Sale at *Benledi*.

Wednesday 8 June, 7.30pm - Public Forum - Reducing Through-Traffic in Glebe - Glebe Town Hall, St Johns Road.

Wednesday 8 June, 7.30pm - Glebe Society Management Committee Meeting - The Old Fire Station, 115 Mitchell Street. All members welcome - come along after the Traffic meeting.

Friday 17 June, 7.30pm - Cheese and Wine Tasting - Glebe Rowers Club. See p7 and Booking Form.

Friday 1 July, 6pm - Official opening of the Glebe Art Show 2005, *Benledi*.

Saturday 2 to Sunday 10 July - Glebe Art Show Exhibition.

Wednesday 13 July, 7.30pm - Glebe Society Management Committee Meeting - The Old Fire Station, 115 Mitchell Street. All members welcome.

Contacting

The Glebe Society

Mail

All correspondence should be addressed to:

The Glebe Society Inc
PO Box 100, Glebe NSW 2037

Website

The Society has a growing website (www.glebesociety.org.au) for the information of members and anyone with an interest in Glebe.

The website will only flourish if members use the site. Send contributions or comments to webmaster@glebesociety.org.au

The Bulletin

We are glad to publish letters or articles on any matters of interest to Glebe, any topic raised in the *Bulletin*, or any issues relating to the Glebe Society. Write to the address above or email editor@glebesociety.org.au

Disclaimer

Views expressed in this *Bulletin* are not necessarily those of the Glebe Society Inc.

Bulletin Deadline

The next edition of the *Bulletin* will be published in June. The deadline for contributions is **Saturday 18 June**.

The Glebe Society Inc

Established 1969

Management Committee:

President	Bob Armstrong	9660 4189
Vice-president	Bruce Davis	9660 7873
Immediate Past President	Andrew Craig	9566 1746
Secretary	Liz Simpson-Booker	9518 6186
Treasurer	Bruce Davis	9660 7873

Committee Members:

John Buckingham	9660 7780	Sue Ingram	9692 8534
Tony Larkum	9660 7030	David Mander-Jones	9552 4172
Hilary Wise	9660 5848		

Sub-committee Convenors:

All sub-committee convenors are *ex officio* members of the Management Committee

Arts, Culture and Media	Sue Ingram	9692 8534
Bays and Foreshores	Mark Dent	9566 2511
Environment (Acting)	Asa Wahlquist	9660 8261
Glebe Point Road Revitalisation	Jan Wilson	9660 2698
Heritage	David Mander Jones	9552 4172
Infrastructure Defect Reporting	Margaret Sheppard	9660 4121
Membership	Kevin Treloar	9660 6720
Parks & Open Spaces		
Planning	Neil Macindoe	9660 0208
Transport and Traffic	Chris Hallam	9660 3670

Adopt-a-Park Contacts: *Kirsova* Fay & David Mander Jones
Foley Park Bobbie Burke (9692 0343)

Other Contacts:

Archivist	Lyn Milton	9660 7930
Bulletin Editor	Edwina Doe	9660 7066
Historian	Max Solling	9660 1160
History of the Glebe Society	Jeanette Knox	9660 7781
Liaison with CityRags	Bob Armstrong	9660 4189
Liaison with FLAG	Jan Wilson	9660 2698
Publicity	Sue Ingram	9692 8534
Social events	Jeanette Knox	9660 7781
Website	Cynthia Jones	9660 2451

In this issue

- I The Great Wake report - p1
- I COGG (Coalition of Glebe Groups) explained - p1 & p2
- I FLAG (Forest Lodge and Glebe coordination group) explained - p3
- I Shopping Trolleys - p3
- I Planning Matters - p4
- I Who Lived in Your Street? - p5
- I Cheese and Wine Party 17 June - p7
- I Glebe Matters - p8

The GLEBE
PO Box 100



SOCIETY Inc
Glebe 2037

POSTAGE
PAID

MEMBERSHIP OF THE GLEBE SOCIETY

Individual member	\$45
Joint (2 people, one address)	\$55
Household (more than 2 adults and/or children, one address)	\$60
Concession (student or pensioner)	\$20
Business or institution	\$110

Write to PO Box 100, Glebe, 2037 or phone the Secretary, Liz Simpson-Booker, on 9518 6186.

If you have a matter that you would like to discuss with the Management Committee, please phone the Secretary.

COMMUNITY CONTACTS

Place Manager, Glebe, Forest Lodge & Camperdown:

Jenny Underwood, 9298 3191 (direct), or 0414 617 048.

email: junderwood@cityofsydney.nsw.gov.au

Glebe Town Hall Office: 9298 3190, 8am-6pm

Mon -Fri

Sydney City Council Customer Service

Telephone (24 hours): 1300 651 301

email: council@cityofsydney.nsw.gov.au

website: www.cityofsydney.nsw.gov.au

Dumped Shopping trolleys: Bi-Lo - 9281 4511. Most other major stores - 1800 641497. Pacific Services - 0500 847 000 or trolleys@pacificservices.com.au.

Aircraft noise: 1800 802 584