



The

# GLEBE SOCIETY

Bulletin

September/October 1998

A publication of THE GLEBE SOCIETY Inc Box 100 Post Office Glebe NSW 2037 Australia  
Print Post Approved - No. 234093/000 10 No. 8 of 1998

## THE GLEBE SOCIETY INC

### MISSION STATEMENT

The Society's Mission statement, adopted at the AGM in August, states, among other things, the intention that the Society be more representative of the different communities in Glebe, and work to increase the sense of community spirit.

Glebe Week, arranged by the Chamber of Commerce, provided an opportunity to visit some of the diverse groups whose home is in Glebe.

On this page is some information concerning the activities of the Glebe Youth Service.

On page 4 we have an article on Glebe's Aboriginal community.

## THE GLEBE YOUTH SERVICE ...

### ... SUPPORTING AND LISTENING TO YOUNG PEOPLE!

The Glebe Youth Service (formerly the Glebe Youth Centre) provides programmes and services for young people who live in Glebe, go to school in Glebe, or frequent the Glebe area.

We provide a drop-in service four afternoons each week which incorporates a food programme, and 25 young people, on average, are provided with a meal each afternoon. We run gender-based group work programmes two evenings each week which include educational workshops, outings, arts activities, and physical recreation. We provide camps and run a school holiday programme. We also run one-off projects such as community art, photography and film-making workshops.

Over the last several years the Glebe Youth Service has run two crime prevention projects, and we are currently taking part in a research project on crime prevention. We also provide information, advocacy, referral and support services for young people on a range of issues, including health, housing, education, employment and training, income support, legal issues and family issues. Other agencies (such as Centrelink and employment services) outreach to our service.

The Service was established nine years ago, using Department of Housing premises at 51 Glebe Point Road. It has now successfully campaigned to permanently move the service to 84 Glebe Point Road. No. 84, however, needs a substantial upgrade which will cost \$300,000+, and this will be jointly funded by the Department of Housing and Leichhardt Municipal Council, with contributions also from The Broadway Shopping Centre.

Our own contribution is to be \$33,000, and with this in mind we launched a fundraising campaign at Darling Mills Restaurant in August with guest speaker Tom Uren.

We work closely with other agencies, government departments and the local community to develop appropriate responses to the problems that young people face. We were very appreciative of the \$500 donation presented by The Glebe Society, and hope that we might find ways of working together in the community.

For more information, you can call Colleen, Karen, Simon or Derek on 9552. 2873.

Colleen Dowd  
Glebe Youth Service

# HIGHLIGHTS

from the **GLEBE SOCIETY MANAGEMENT COMMITTEE MEETING**



## FROM THE PRESIDENT

The sun shone. The champagne flowed. Over 100 people came to enjoy the comfortable boat, generously provided at cost by Matilda Cruises for our excursion on Sunday morning, 13 September.

We shared Blackwattle Bay with some rowers - no doubt eyeing us warily, but our low speed seemed to generate no wash.

It doesn't take long to realise how many different activities go on around our bays - boat building, boat storage, concrete making, container storage; as well, they provide a location for fishing boats, recreational boats, parks, the Glebe High School, the Rowing Club, the Fish Markets and private residences.

The water is no doubt important as transport for many industrial activities. Cruisers come round to tie up at the Fish Markets for lunch.

Many people, particularly residents, want to be able to have views of the bays. Unfortunately, the blocks of units do not look attractive from the water. The problem is to find a fair balance among the different interests.

For example, for many people a ferry service would provide a relaxing and enjoyable way of getting to town. It would also provide an easy link, through Circular Quay, with ferries to other parts of the Harbour.

The Glebe Society has always supported the wishes of Sydney University Women's Rowing Club to use Blackwattle Bay for rowing early on weekday mornings and on weekends. This does not seem to preclude a ferry service (or, for that matter, other craft) abiding by rules designed to protect the rowers, or from using the Bay during the day, for example, when the rowers are not using it.

In my view, with mutual goodwill, it should be possible to find solutions to these issues which take account of the interests of everyone involved, including those of the people who live in Glebe, to be able to use and enjoy the bays and foreshores of our Harbour.



Russell Stewart

## Planning Day:

Project Teams are being formed to start working on the various issues identified in our Planning Days, see notice on p3 for details. Interestingly the two issues which drew the most response were:

Foreshore Walkway

Parklands and Open Spaces

Responders were most attracted to issues where they could be involved in 'Strategy' and 'Campaign Driving' because this is where we can make the most difference.

## Boat Day

This was a great success, as both Ian Edwards and Russell Stewart testify elsewhere in this Bulletin.

## Banner for the Glebe Society

Alison McKeown has found a firm which will make a banner for the Society at a cost of just over \$500. Colours will be maroon and gold.

## Glebe Press Clippings:

For many years Bev Horsborough kept a book of press clippings relating to Glebe. Maureen O'Connor has agreed to continue this project. The completed books are held by our archivist, Lyn Milton.

## Airport Minibus for Glebe:

We understand that there is a plan to have a minibus running between Glebe and Kingsford Smith Airport.

## Traffic Study:

Leichhardt Council has expressed their appreciation of our submissions to the Local Area Traffic Management Study. Residents are encouraged to make comments - see Noticeboard.

## Wentworth Park:

Roger Mackell from Gleebooks drew our attention to a plan by Leichhardt Council to put cricket nets into the area of Wentworth Park planned for passive recreation under the Draft Landscape Plan. Sydney City Council (Trustees for the Park) maintain they did not know of this move. After the Society raised objections, the Glebe High School agreed that the public can use their cricket nets - which is a highly satisfactory outcome.

A letter from the Lord Mayor of Sydney in the *SMH* (8/9/98) claimed that the reason the landscaping of the Park had been delayed was that the Park is used as a carpark by the greyhound people. If this is the only reason, then we encourage them to press ahead and landscape *around* the parking. We will write a letter to that effect.

## Glebe High School:

The Glebe Society was pleased to donate a cheque for \$75 for the school's Prize for Excellence.

All correspondence to Society contact people should be sent c/- The Glebe Society Inc PO Box 100 Glebe 2037

# GET INVOLVED IN ...

## COUNCIL DECISION-MAKING

In 1991 Leichhardt Council voted to establish a precinct committee system, as a means of involving residents in Council decision-making, and as a constant channel of information between Council and the community. The Municipality was divided into fourteen areas, or precincts, which corresponded as closely as possible with existing localities. Committees comprising residents were established within these precincts, and each committee elected a secretary and a chairperson.

A Precinct Co-ordinator was employed by Council to resource the Precinct Committees, and to ensure that information and ideas flowed between Council and the Committees.

The Precinct Committee system has evolved over the six or seven years it has been in existence. Some of the Committees have combined their meetings, some are thriving, and some have lost members. The Community Relations Officer now oversees Council interaction with the Committees which address a range of issues including building and development applications, open space and parks, traffic, foreshore use, and Council reports and projects.

Residents are encouraged to join their local Precinct Committee, residence is the only pre-requisite for voting rights. Details relating to the three Glebe Precincts are:

### **Precinct 12 - Forest Lodge:**

Contact - Anthony Nicholson: 9660. 4393

### **Precinct 13 - Glebe Point:**

Contact - Christine Newton: 9660. 8349

Combined Meeting Precincts 12 and 13

Meets 1st Wednesday each month

Toxteth Hotel Meeting Room - 7 pm

### **Precinct 14 - Glebe:**

Contact: Peter Wright: 9566.2018

Meets 4th Sunday each month

Glebe Neighbourhood Centre - 10.00 am

I am aware that there are genuine concerns among Glebe residents about crime rates and related problems, and Council's General Manager has been alerted. A working group has been formed within Council to look into this serious matter, and has reported to Council.

If you are interested in joining your local Precinct Committee, or if you are particularly concerned about the incidence of crime in Glebe, please contact me at Leichhardt Council - 9367. 9046.

Janet Martin  
Community Relations Officer  
Leichhardt Municipal Council

## COMMUNITY NETWORKING

Glebe is a fascinating and diverse place, and in this little corner of the city are a wide range of people working in the community. Yet, although we work in the same area, we often don't make connections with each other. We started to address this situation with the first Glebe Community Networking Expo. This meeting was held as part of Glebe Week 1998, and was designed simply to allow those of us working in the community to make personal contacts.

All participants agreed the first Expo was great! We had a range of people from education, health, youth services, churches, community support, the media, pre-schools, mental health - even The Glebe Society was there!

We hope that such a networking opportunity will occur twice a year - so if you work in Glebe and would like to meet others who do, please call me at The Salvation Army in Ross Street for more information: ph 9660. 8056.

Lyn Edge

## GLEBE SOCIETY PROJECT TEAMS

Preliminary meetings will be convened in October to discuss the setting up of Project Teams around the issues which attracted the most response from members.

If any of these projects arouse your interest, we would welcome your involvement. Just contact the person for information about date/time/place.

### **Foreshore Walk and Cycleway**

Ian Edwards 9660. 3240

### **Parks and Open Spaces**

Judy Vergison 9692. 9200

### **Conserving Glebe Heritage**

Jennifer Reed Burns 9692. 9369

### **Public Transport and Traffic**

Jeanette Knox 9660. 7781

### **Litter and Rubbish**

Judy Vergison 9692. 9200

## RENEWALS DUE

If there is an 'X' at the bottom of the address label on your Bulletin, it means that - according to our records - we have not yet received your renewal subscription to The Glebe Society Inc. A renewal form is enclosed; please return to:

PO Box 100 Glebe 2037.

## **" Tranby fills the gap that has left us by the wayside "**

**Bob Maza, former Assistant Director of Studies  
Tranby Aboriginal Co-operative College**

### **TRANBY ABORIGINAL CO-OPERATIVE COLLEGE 13 MANSFIELD STREET GLEBE**

The present site of the College at 13 Mansfield Street is a 19th century post-Regency house which was first known as 'Toxteth Cottage' and then later as 'Tranby', situated on the old site of the Toxteth Estate in Glebe. [The word 'Tranby' is an English place name with Scandinavian roots meaning 'crane'.] The property was basically in the hands of the Allen and Boyce Allen families until 1946. The house remained in domestic use until 1931 when it became a hostel for the University of Sydney, and was the home of the Reverend John Hope of Christ Church St Laurence. When it was sold in 1946, the Rev Hope, David McKillop, a barrister, and Colin Kirkpatrick, a physicist, bought the house as trustees for the 'Tranby Students Hostel' to be run as a charity.

In 1957, Rev Hope pledged Tranby to the Australian Board of Missions. Christian Community Co-operative (an Anglican body), "for use as a Training Centre for the development of Co-operative practices for Aborigines". The agreement stated that the Training Centre continue to be known as 'Tranby'.

The first director of the Co-operative was the Rev Alfred Clint, an Anglican Bush Brother. Alf Clint had been in New Guinea and Queensland assisting communities in setting up co-operatives, and in 1958 he established the Tranby Co-operative, and with a total of eight students, he created the first Aboriginal adult education institution.

A basic syllabus of skills-based training (carpentry, bricklaying, motor repairs, book-keeping, agriculture and plumbing) and the principles of co-operatives was introduced. The name 'Tranby Co-operative for Aborigines Ltd.' was registered in 1971.

Rev. Clint died in 1982 and the position of Administrator has been held since then by a former Tranby student, Kevin Cook. Student intake has increased from the original eight to 120 each year, and the emphasis has changed from trades skills to tertiary preparation. Funding, which traditionally had come from trade unions, church groups and individuals, is now available from both the Federal and State governments. In 1987, Nos. 11 and 11a Mansfield Street ('Minnamurra' and its adjoining building) were purchased to cater to the growing needs of the Co-operative.

Since 1958 Tranby has developed an outstanding reputation as a place of education for Aboriginal and Islander peoples and Tranby College is now well recognised as a place of Aboriginal heritage significance. A permanent Conservation Order was placed on 'Tranby' in 1979 under the NSW Heritage Act recognising the significance of its European heritage.

[The above information was taken principally from a booklet published in 1996 by the Friends of Tranby.]



Striving for Educational Excellence and Self Determination

### **TRANBY OPEN DAY - SEPTEMBER 1998**

During Glebe Week TRANBY ABORIGINAL CO-OPERATIVE COLLEGE held an Open Day. Visitors were welcomed by a staff member, invited to have tea and biscuits, shown videos explaining the background to the Co-operative College, and shown over the new buildings which house the classrooms, library, computer and common rooms.

We learnt that the Co-operative has two distinct sections: the COLLEGE itself, and the bookshop **BLACK BOOKS**.

TRANBY COLLEGE is the only educational institution in NSW that caters for Aboriginal and Islander mature age students, 60% of whom are from the country areas of NSW. Ages range from 18 to 60. Students at Tranby are eligible for Abstudy (a student allowance payable from the Commonwealth Government similar to Austudy). A subject entitled 'Aboriginal Studies' is an essential part of all courses. In 1998 courses available to students are: the Certificate of Adult Foundation Education, the Diploma of Development Studies - Aboriginal Communities, and the Diploma of National Indigenous Legal Studies. In 1999, an Advanced Diploma course will be offered in Applied Aboriginal Studies.

Support services offered to Tranby students include the canteen which provides lunch, hostel accommodation for full time students, bus service, excursions and field trips, and tutorial assistance.

The COLLEGE is considering reintroducing a course on Aboriginal history for non-indigenous people which would be run at Tranby in the evenings.

**" ... non-Aboriginals finding out  
about Aboriginal culture, and the  
Aboriginal struggle ...  
that's real reconciliation ! "**

**Jack Beetson, Executive Director**

TRANBY COLLEGE aims to encourage independence and boost the self esteem of its indigenous students, as well as train them for work in the wider community.

Yvonne de Vries is Director of Studies, phone 9660. 3444, fax 9660. 1924.

... continued on next page **BLACK BOOKS**

## TAKING SYDNEY BEYOND 2000

In August the Society responded to an invitation from the Lord Mayor of Sydney to review the blueprint for central Sydney. Judy Vergison, Christine Whittemore and Russell Stewart prepared the response, a general outline of which follows. Copies of the two page submission are available from the Society - phone Judy on 9692. 9200.

"The Glebe Society Inc takes a broader view than just the centre of Sydney, as the linking of public transport, pedestrian access, push bike access, public parks and safety have a key impact on encouraging residents and visitors in adjacent suburbs to use the city and add to its vitality.

Integration with adjoining areas require that these plans not be considered in isolation, particularly when funding decisions are being made. Obviously the implementation of any such plans will impact on the competing priorities for funding the wide range of Council projects.

In some areas, such as Wentworth Park, plans have been put forward and these are continually on hold with no decisions being made. The Society is aware of the issues behind these delays but the Society strongly believes that over 10 years is too long for no decision to be made. This needs to be addressed.

The upgrading of other city parks has been given priority and we now need to make it happen for Wentworth Park by 2002. Wentworth Park is a key access point to the city for residents and visitors alike and could be a garden entrance for the western city gateway.

There is a key issue with safety. It will be a major concern for people using the city if there is a perception that their safety is at risk. There is also a need to demonstrate a true commitment to environmentally friendly public transport alternatives which provide safe, convenient, comfortable and cost effective ways of moving around the city and to access adjacent suburbs.

There is perception that residents in adjacent suburbs find it easier to access the major shopping centres 15 minutes drive away rather than going to the city. The Glebe Society supports the current direction for the city Centre plans which provide for a multi-use city with a critical mass of residents, accessibility, valuing history and heritage with a vibrancy of activity."

We have received acknowledgement of our submission, and indicated that we would be glad of the opportunity to be involved in the next stage of the strategic planning.

...continued from page 4



### BLACK BOOKS

**" People can come into BLACK BOOKS and ask about anything to do with Aboriginal culture and find it a very welcoming experience. "**

**Chris Gordon**

BLACK BOOKS, at 11 Mansfield Street was set up in June 1982, and is the leading specialist distributor of books by, for and about Aboriginal and Torres Strait Islander people and issues. It is to date the only Aboriginal-owned and controlled distributor/retail outlet operating to meet the needs of individuals, schools, universities and libraries. It is closely associated with the Aboriginal Education Consultative Group which advises the NSW Minister for Education.

It is now compulsory within the curriculum of primary and secondary schools in NSW to contain Aboriginal perspectives, and BLACK BOOKS advises the Board of Studies on how this can be achieved.

The bookshop carries a wide range of books by both Aboriginal and Islander authors, as well as others, dealing with history (both pre-contact and post-invasion), regional studies, current issues, art, and books specially written for children. It also carries tapes, CDs, musical instruments, flags, knick-knacks, posters, jewellery, and clothing made in indigenous communities.

BLACK BOOKS is open to the public 9 - 5 Monday to Friday, and has a comprehensive catalogue and very helpful staff. Chris Gordon is in charge, phone 9660. 2396, fax 9660. 0120. If all this seems like an advertisement ... perhaps it is. Many of us in Glebe know very little about this Aboriginal enterprise in our community.

Bobbie Burke

#### BLACKWATTLE STUDIOS:

#### 461-465 GLEBE POINT ROAD

The tenants of Blackwattle Studios (150 creative people and businesses) are concerned that they may have to vacate the premises at 461-465 Glebe Point Road, as the owner has submitted a proposal to Leichhardt Council to redevelop the site as high density apartment towers. The tenants are facing a rental increase of between 15 - 30%, with guaranteed occupancy only until 30 June 1999.

With the support of the NSW Ministry for the Arts, they are looking for a solution from State and local Government bodies.

# THE CHANGING FACE OF GLEBE

## Former Children's Hospital site: Bridge Road, Camperdown

I have attended two public meetings concerning the development of this site. They were convened by the consultants, and present were representatives of the owner, Sterling Estates, the architectural firm hired by Sterling, planning staff from both South Sydney City Council (SSCC) and Leichhardt Council (LC), FRROGs, Precinct 14 (Forest Lodge, etc.) and the Society. I was wearing two hats at both meetings, representing (1) the Society, and (2) Sandra Nori on the Traffic Committees of SSCC and LC. I will leave the concerns of FRROGs and the Orphan Creek Gully and environs to Roberta Johnston [who we hope will report in the next Bulletin], and will address only the planning and traffic matters.

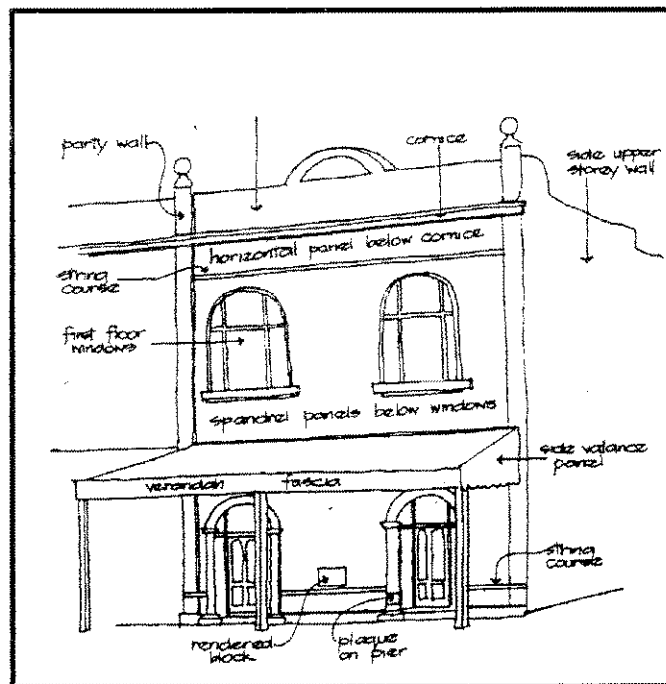
My impression is that there are likely to be up to 850 units/flats, and these will be much more grouped than the plan first presented. Details of the new plan (and I will be able to view the final submission presented to SSCC on 30 September) should be in the next Bulletin.

The current plan, certainly not yet fixed, includes a fair degree of open public space. The traffic flow plans seem OK. SSCC has a requirement of 0.8 car spaces per unit, which may be realistic. This figure is lower than LC's car parking requirements. Apart from a modest amount of above-ground parking, essentially for visitors, residential parking will be underground.

At the second meeting there was a proposal for a significant grading of building heights from the north (Orphan Creek Gully side), to the south, especially at the corner of Bridge Road and Booth Street. These proposals range from about 12 metres, say three storeys, to the possibility of up to a 20-storey 'landmark' tower on the corner.

The developers plan to keep almost all the Bridge Road frontage, including the large former out-patients' building, on the east (city) side, and the large trees on Bridge Road. The heritage order on the Administration building will of course be observed. Cr Neil Macindoe asked me to raise the possibility of using that latter space as a community centre, and including a small gallery. I made the point that as our meetings were held in the Benledi community room, the usefulness of such spaces was evident.

There will be a memorial to the staff, parents and the children who passed through the 80 or so years of the life of the Royal Alexandra Hospital for Children, including an acknowledgment of the children who died there. On this note, I have walked around the site twice, under the auspices of the Department of Health, and arranged by FRROGs, and there were some sad buildings there, especially the mortuary and the cancer wards.



I think that Leichhardt Council's planners are not in favour of such a high-rise development. To put it into perspective, the block of flats facing the hospital site, the Ernie O'Dea Court I think it is called, is about 12 storeys. LC has some influence over planning decisions in the general area, but no statutory control. In summary, there could be an increased population of up to 1,900 people, assuming 2.2 people per unit, plus about 650 cars.

I may be able to calculate later this year how many people have joined the 2037 postcode area, assuming the Children's Hospital site is included in the figure (even though it's postcode is 2050). My current guess is a 20% or more increase in Glebe's population over a matter of just a few years.

I have raised at every occasion the need for a thorough review of services to cope with the increased population, both for more buses - which could include a reinstatement of the 459 route in Bridge Road which could travel via the expressway to the city - and for shops to be located on the site itself. I will continue to pressure those responsible to review these matters, as I am sure will Sandra. Huge developments can arise in a relatively short time, but that speed should be matched by an equivalent change in general infrastructure to handle the pressure of increased population.

## Bidura: 357 Glebe Point Road

Tenders for 'Expressions of Interest' for the disposal of Bidura have closed. Of the seven, most were for possible residential usage, plus corporate company usage and back-packer usage. The final decision will be made in about a month, though nothing will happen until December 1999, giving time for the current users to relocate. I will try to discover the 'winner' soon.

... continued page 7

... continued from page 6

**Royal College of Nursing, 'Kerribree':  
53-55 Hereford Street**

In regard to the two buildings used by The Royal College of Nursing, on the corner of Hereford Street and Walsh Avenue, I have spoken to the person responsible for the potential sale who is also concerned with the Bidura sale. All potential buyers/developers are very aware of the heritage value of both these sites, and often bring along an architect when making an inspection. I am pretty happy about the future of both sites.

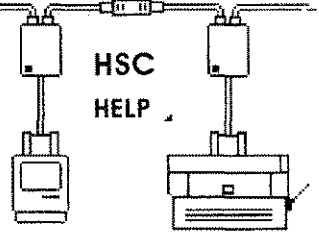
**Bridge Water Estate: Oxley Street**

The reason that the Bridge Water development in Oxley Street has the possibility of including a marina (see Bulletin 7/98) is that the title to the site included usage of some of the bay, as it was, of course, originally a lighterage (i.e. ship refuelling) area. I understand that if the small jetty there had been removed there would be no marina, according to Sydney Waterways (the old MSB). There will be space for only four berths, and they seem to be very expensive. Whether this practice of water usage should continue is, unfortunately, not up to us. I am still worried about the thin-end-of-wedge possibility that this may lead to a *de facto* request for a marina on every waterfront site in the area.

**115-119 Glebe Point Road**

I made a submission regarding the D.A. for the proposed redevelopment of 115-119 Glebe Point Road, on the corner of Mitchell Street. The corner property is Fascination House. The D.A. requests that the current shop frontages be retained, and that the area behind on ground level become a tavern, with some food facilities. The first floor would be turned into a dining room for the tavern, and next door, separately, a medical practice. Neither of these latter first floor uses include disabled access, as far as I could ascertain on viewing the plans at Council. There were plans for an underground parking space for 10-11 cars from Mitchell Street. More next Bulletin.

John Hoddinott



**FROM THE LIBRARY**

**HSC HELP**

Go to the top of the class using the latest in information technology!

Essential resources to help HSC students with their studies are available at Glebe Library, including HSC examination papers 1995-1997, the Australian Literary Database, and State Library Catalogue - all on CD ROM. And there is free 1-hour CD ROM training sessions held for upper primary and high school students throughout the year from 4-5 pm, and during school holidays (to 9 October) at arranged times.

Book at the Library - 9367. 9262.

# BLACKWATTLE TANGO

The weather on Sunday 13 September, fortunately for us, was perfect. Our president, who welcomed us on board the ferry, has given us his account of a very pleasant trip (p2) so there isn't very much to add.

Our local MP, Sandra Nori, promised us that she would be organising a second community meeting in connection with the Master Plan for Blackwattle and Rozelle Bays and that we would all be notified of the date. Contrary to the impression that may have been conveyed by an article in the local press only a 'preliminary draft' plan has so far been published and this has not yet been displayed for public comment.

The Mayor of Leichhardt, Cr Kris Cruden, promised the support of council in the construction of the necessary wharves for the proposed ferry service, which we support for the very good reason that public transport saves a great deal of the air pollution which is caused by motor vehicle exhaust emissions.

Unfortunately we hadn't enough time for commentary on aspects of the bays and foreshores which we may need to defend against encroachments under the SREP 26 Master Plan, although Philip Vergison gave us a brief history of the *James Craig*, now moored in Rozelle Bay.

We drank rather more champagne than was originally intended but this probably contributed not only to our enjoyment of the trip but the generous response to the raffle. First prize was a dinner for two, to the value of \$120, at Darling Mills, donated by Sara Adey. Other prizes were: a basket of fine wines donated by Shaughn Murphy, president of the Glebe Chamber of Commerce and proprietor of the Toxteth hotel; a copy of Bernard and Kate Smith's book *The Architectural Character of Glebe Sydney*, donated by The Glebe Society; cinema tickets donated by the Hoyts Broadway cinema and ferry tickets donated by Matilda Cruises. Our thanks are due to all these donors for their generosity.

The day was also a great success financially, raising well over five hundred dollars, mainly due to the extraordinary talents and hard work of Marianne von Knobelsdorff and a dedicated team of assistants. I'm sorry we had to limit the numbers but perhaps there will be another opportunity for those who missed out.

Ian Edwards



Leichhardt Bicycle Users Group - LBUG - with support from The Broadway Shopping Centre, Leichhardt Council, Wheels in Motion, and Inner City Cycles is hosting a Bike Day in Bicentennial Park, Glebe Point on Saturday 7 November.

The day is a chance for everyone who likes bikes to come down to the

scenic waterfront park for a day based around cycling. There will be races and events for children and teenagers, with some worthwhile prizes, including:

- two bicycles
- safety checks and maintenance advice by bike shop mechanics
- rides for adults and older children around Glebe

- including a ride over the Glebe Island Bridge Cycleway and a look at the Fish Markets and Pyrmont. Food and drinks will be provided free, or at a small cost, and community and bicycle groups will be setting up stalls.

If you've got a good bike, or a new or interesting style of bike (recumbents, suspension MTB, folding, etc.) bring it down and show it off! If you've got some spare bike bits and pieces to sell, come on down and set up a sale area.

In fact, if you've got any bicycling interests at all come and join in the day in the park. Bring some sunscreen and a hat and a bottle of water for the rides. The day starts at 10 am and will run till about 2.30 pm. There is parking at the end of Glebe Point Road, but we hope you will ride your bike down.

On Sunday 8 November there will be a 40 km Recovery Ride - a cafe cruise around the Inner West and lunch at the Rowing Club.

For further information, offers to volunteer on the day, or if you need a map giving bike routes from surrounding areas, ring me on 9810. 3706.

Bob Moore  
Convenor, Leichhardt Bike Group

Dear Editor,

I agree with Christine Stewart (*Letters, July/August Bulletin*) that Glebe would be a nicer place to live if there was less rubbish in public places. In my opinion there appear to be three ways to achieve this:

- 1) convince people not to place refuse in the streets and parks;
- 2) shift the problem of garbage removal to volunteers and/or private contractors;
- 3) provide the financial support for the Council to remove this rubbish.

The first approach of educating people to change their ways is a slow and difficult process. The rubbish in Glebe comes not only from residents, but also from many visitors from outside the suburb. A national campaign like 'Clean Up Australia' is helpful, as is a 'Clean Up Glebe' Day, but the 'message' doesn't seem to sink in for long.

The second approach embraces that of Ted Mack of North Sydney fame. His Council reduced the number of public rubbish receptacles and, presumably, people placed their lunch wrappings and the like in the garbage of their employers. Some people may even have taken their trash to adjacent municipalities, or the railway station. This approach moved the problem of trash removal to others and the North Sydney Council was falsely praised for this initiative.

Volunteers could play an important role (as suggested by Ms Stewart), however without an incentive the task of the rubbish in Glebe may overwhelm such groups.

The Leichhardt Council at present is responsible for rubbish removal, and uses rates and a garbage levy to fund this activity. Extra funds would support more street sweepers and more household collections. The writer is aware that a new system to reduce collections is presently being put in place; and it will be interesting to see its effect on our local environment. Either Council would have to divert funds from other activities or rates and charges will have to rise.

One interesting idea is to increase the garbage levy in Glebe to provide a cleaner environment, and allow volunteers to reduce their garbage levy in proportion to the number of hours they give to cleaning up Glebe. An honour system would keep the administrative cost low.

Yours faithfully  
Bill Cato



Your letters on any matters relating to Glebe are welcome. Ed.



On the  
first  
three  
Sundays  
In  
October

Christine Whitemore  
(Convenor of the Society's  
Environment sub-Committee)  
will be at the  
**Noora Cafe**  
between 11 am - 1 pm

[opposite the Glebe Library, next to the Park Pharmacy]

to talk about your ideas, comments, suggestions, etc. regarding issues affecting the environment in Glebe.

Members and friends are invited to join her for a cup of coffee and a chat on October 4, 11 or 18.



## St. John's Anglican Church

has two Bins where donations can be placed.

1) The Good Samaritan Bin situated in the Church car park - the Church welcomes donations of clothing and blankets.

2) The Tin Bin situated at the back of the Church where regular contributions of tinned food is greatly appreciated by Anglicare.

### SUNDAY LUNCH

The next lunch will be at  
Cafe Otto, 79 Glebe Point Road  
at 12.30 on Sunday 11 October

Come and join us.  
Ring Ian Edwards 9660. 3240



## Christmas Cake for All !

At The Glebe Society  
Christmas Gathering  
Sunday 6 December 5 - 7 pm  
on the lawns at  
Benledi/Glebe Library  
cnr. Wigram and Glebe Point Roads

Please bring your own food and drink; an alternative is that simple food will be available at a small cost.

If wet, the gathering will be held indoors at Benledi.

Hope to see you there !



### LOCAL AREA TRAFFIC MANAGEMENT STUDY



Copies of draft traffic management schemes are available as a newsletter for each suburb at the Glebe Library.

The Council invites all residents and local business people to look at the plans and comment. There is a standardised response form (reply paid) available.

Your comments must be received by Friday 16 October.

Inquiries:  
David Trebilcock,  
Transport Planner,  
9367. 9216



### DISCLAIMER

Individual views expressed in this Bulletin are not necessarily those of The Glebe Society Inc.

### CASUAL WORK WANTED

### CASUAL WORKERS WANTED

The Glebe Chamber of Commerce is putting together a directory of people living in Glebe who need casual workers, and people who want to do casual work - carpentry, labouring, hospitality, cleaning, maintenance, etc.

If you know of anyone (e.g. daughters, sons, students) who wants casual work of this sort, and if you need any such work done, let the Chamber know and they'll try to match supply with demand.

Phone Gay Kalnins - Chamber Secretary  
on 9552. 1546

# Notice Board

## CELEBRATING SOLIDARITY



Historic trade union posters from the collection of local resident Alban Gillezeau will be displayed at

**Glebe Library  
from 6 - 30  
October**

The exhibition will take a look at the union movement by reflecting on various campaign issues which have occupied unions both in Australia and overseas.

## THE FRIENDS OF BENLEDI AND GLEBE LIBRARY



invite you to a

**Melbourne Cup luncheon at Benledi  
on Tuesday, 3 November from 1.00 pm**

Come along and enjoy friendship, chicken and champagne and the thrill of the big race.

Bring your friends and neighbours and wear your best Spring bonnet - a prize will be awarded for the most glamorous hat!



**Cost \$20/person - RSVP Wednesday 28 October.  
to Marie 9552. 4227, or Ros 9660. 7430.**

## TWO REMINDERS FROM JOHN HODDINOTT:



Keep an eye out for the new electric bus under test on the 431 route. It is smaller than the other buses, is bright green and gold, and is very quiet and fast, and runs infrequently - as yet.

Wine corks can be left in the bottle shop of the Toxteth Hotel, or on my front verandah at 30 Wigram Road; I collect them for the Girl Guides Association of NSW, who make some money from their use, as well as saving a small amount in imports.



## Come and Sing Fauré's Requiem



**to be conducted by Philip Matthias on  
Sunday 15 November 1998 at  
The Chapel of St Scholastica's School,  
Avenue Road, Glebe.**

Rehearsal will commence at 2 pm sharp and participants should arrive by 1.45 pm.

The Workshop performance will commence at 4.15 pm.

**Cost \$5 (members of RSCM)  
and \$10 non-members**

If you would like to be part of the performance, please bring your own score (Novello preferred), some copies will be available for purchase.

**RSVP to Secretary 9552. 4473  
by 13 November**

**Enquires: Margaret Whittaker  
Glebe Library**

## GLEBE VOLLEYBALL CHALLENGE.



The Salvation Army is sponsoring a Volleyball Challenge on Saturday 24 October, from 10am - 3pm in Bicentennial Park (Stage 2)

Why not invite six of your friends and come along for a round robin day? There will be a BBQ lunch available, with free drinks and great prizes for the winning teams.

Cost \$40 per team, which includes insurance.  
This will be a great day -

so find a few friends and register a team.  
More information from Lyn Edge: 9660.8056.

## For Your Diary ...

Tuesday	6 - 30 October	<b>Celebrating Solidarity</b> - see Noticeboard p10 Historic Trade Union Poster Display at Glebe Library
Sunday	4 October	<b>Your thoughts on the Glebe Environment sought ...</b> 11 - 1 pm Noora Cafe, opp. Glebe Library. see notice p8
Sunday	11 Oct-8 Nov	<b>John Ogburn Exhibition of Paintings and Drawings</b> Harrington St Gallery, 17 Meagher St. Chippendale
Sunday	11 October	<b>FRROGs propagating seedlings for the Gully at Rozelle Bay</b> 9 - 12 Community Nursery, end of Chapman Rd. Annandale
Sunday	11 October	<b>Glebe Environment discussions...</b> (as 4 October)
Sunday	11 October	<b>Society Lunch - all welcome</b> 12.30 Cafe Otto, 79 Glebe Point Road
Wednesday	14 October	<b>Glebe Society Management Committee Meeting</b> 7.30 - Toxteth Hotel Meeting Room
Sunday	18 October	<b>Glebe Environment discussions...</b> (as 4 October)
Tuesday	20 October	<b>.... deadline Bulletin copy ....</b>
Saturday	24 October	<b>St. John's Anglican Church Spring Fete</b> 9 - 1 pm St. John's Hall, St. John's Road.
Saturday	24 October	<b>Glebe Volleyball Challenge</b> 10 - 3pm Bicentennial Park (Stage 2) - see Noticeboard p10
Sunday	25 October	<b>FRROGs Bird watching at Orphan School Creek Gully</b> 8.30 am - meet at the end of Foss Street
Tuesday	27 October	<b>Leichhardt Council Meeting</b> 7.00 - Council Chambers
<b>ADVANCE NOTICE</b>		
Tuesday	3 November	<b>Melbourne Cup Lunch at Benledi</b> 1.00 pm at Benledi - see Noticeboard p10
Saturday	7 November	<b>Glebe Big Bike Day</b> 10 am Bicentennial Park - see article p8
Sunday	15 November	<b>Come and Sing Fauré's Requiem</b> Chapel of St. Scholastica, Glebe - see Noticeboard p10
Sunday	6 December	<b>Christmas Picnic at Benledi and Library grounds</b> 5 - 7pm - see Noticeboard p9

## The Glebe Society Inc

### MANAGEMENT COMMITTEE

#### President

Russell Stewart phone: 9660. 8324  
fax: 9660. 6582

#### Senior Vice-President

Jennifer Reed Burns 9692. 9369

#### Junior Vice-President

Cynthia Jones 9660. 2451

#### Immediate Past President

Mavis McCarthy 9660. 5119

#### Secretary

Christine Stewart 9660. 8324

#### Treasurer

Penny Haskins 9566. 4450

John Cody 9692. 9384

Ted McKeown 9660. 3917

Christine Newton 9660. 8349

Marianne von Knobelsdorff 9692. 0916

Andrew Wood 9660. 2194

### SUB-COMMITTEE CONVENORS

All convenors are *ex-officio* members of the Management Committee

**Aircraft** Alison McKeown 9660. 3917

**Bays and Foreshores** Ian Edwards (BH) 9660. 3240

**Environment** Christine Whittemore 9660. 7969

**FRROGS** Roberta Johnston 9552. 3248

**Light Rail** Bruce Davis 9660. 7873

**Planning** John Hoddinott phone: 9692. 0071

fax: 9518. 9218

**Traffic** Jeanette Knox 9660. 7781

**Wentworth Park** Judy Vergison 9692. 9200

#### CONTACTS:

**Archivist** Lyn Milton 9660. 7930

**Historian** Max Solling 9560. 1160

**Membership List** John Sleeman 9692. 9507

**Bulletin Editor** Bobbie Burke 9692. 0343

**Assistant Editor and**

**New Members** Cynthia Jones 9660. 2451

Membership of THE GLEBE SOCIETY  
INC.

Ordinary	\$30
Concession:	
Student/Pensioner	\$15
Institution	\$30

Write to Box 100 PO Glebe 2037  
or phone Jeanette Knox 9660. 7781

If you have a matter that you would like to discuss with the Management Committee, please ring the Secretary, Christine Stewart on 9660. 8324, and arrange to come to a meeting.

**DEADLINE**

for copy for the next issue of The Glebe Society Bulletin is Tuesday 20 October.

Please send to Box 100 PO, Glebe, or 32 Lombard Street Glebe

**in this issue**

reports on:

- Glebe Youth Service
- Tranby Aboriginal College
- Glebe Big Bike Day

Print Post Approved - No. 234093/000 10

Postage  
Paid

Ms Edwina Doe  
224 Bridge Road  
Glebe NSW 2037



The **GLEBE SOCIETY** Inc

Box 100 Post Office  
Glebe 2037

**The Glebe Library,**  
cnr Wigram and Glebe Point  
Rds. is open as follows:

**Monday and Wednesday**

9.30 am - 8.00 pm

**Tuesday, Thursday and Friday**

9.30 am - 5.30 pm

**Saturday**

9.00 am - 12 noon

**Phone: 9367. 9262**

**Fax: 9518. 9483**