



THE GLEBE SOCIETY BULLETIN

PO BOX 100, GLEBE NSW 2037 AUSTRALIA

Registered by Australia Post - Publication No NGB 7483

NO 6 OF 1993

OCTOBER

Annual General Meeting - Reports

This edition of the Bulletin includes reports from the Annual General Meeting, held on Sunday 12 September. Other reports presented at the AGM were published in the August edition of the Bulletin.

PRESIDENT'S REPORT

On checking the minutes, I note that I was formally appointed by the management committee as President on 16 October 1991, the position having stood vacant since the annual general meeting on 21 July that year. So there is precedent for drafting a reluctant President following the AGM, and I hope the incoming committee is successful very soon. It is not such a bad job - the last two years seem to have passed in a flash!

Not that they have been uneventful years. We can't, of course, point to anything as dramatic (or traumatic) as the handover of the Church lands to the federal government or the stopping of the freeways. But it really is amazing to see what has been achieved in that time. Sometimes we failed; sometimes we lent our support to others and cannot claim full credit for a team success; but always we have been in there trying.

The price of liberty is eternal vigilance, and we have certainly tried to be vigilant.

I have mentioned teamwork. In this regard, I must pay tribute to our political representatives, Peter Baldwin, Sandra Nori and Neil Macindoe. Without exception, they have proved to be effective local representatives, friends of the Glebe Society, and friends of Glebe.

That is not to say it has been all plain sailing on the political front. To say the least, Senator Collins has been less than receptive to the views of affected residents in promoting the government's monstrous about face on the third runway, which will surely go down in history as one of the most ridiculous planning decisions of the century - eclipsed perhaps only by the state government's ludicrous decision to proceed with its engineer-driven high level bridge at Glebe Island. And Chris Stewart can testify to the political buck passing which has gone on in relation to Wentworth Park.

In my last annual report, I made the point that politics is the art of the possible, and we have had to accept some compromises. University Hall is a very obvious one, where only the facade is to be preserved, although on the positive side the original timber and iron verandahs are to be restored. The section which became unsafe and had to be demolished after the recent heavy rain is to be rebuilt to the original design under the supervision of a heritage

2

architect appointed by the Heritage Council. I am hopeful that in the not too far distant future University Hall will again be the impressive gateway to Glebe it once was.

Backpackers hostels are still proving a thorn in the flesh for residents living in their vicinity. The problem appears to be that young (and not so young) transients establish no connection with the area where they happen to be sleeping, and are quite thoughtless when it comes to local amenity. Even in YHA hostels, where alcohol is forbidden and a real effort is made to be good neighbours, the problem is becoming acute. I think this is likely to emerge as a major issue for 1994.

I have already mentioned the Heritage Council. Unfortunately, Reussdale now stands as a mute testimony to the status of the Heritage Council as a paper tiger if it lacks the political backing of the government of the day. Reussdale, one of the most significant buildings in Sydney, is clearly being demolished by neglect, and the government apparently lacks the guts to enforce its own legislation.

One of the problems with heritage legislation is that it fails to address the problem that historic buildings are inherently expensive to restore and maintain. The recent federal budget (Mark 1) recognised this problem, and set aside a small amount of money to redress it. It will be interesting to see whether this provision survives the Senate, and whether the Heritage Council will now have the intestinal fortitude to take action against the Reussdale owners of this world once this excuse for inactivity is removed.

I won't go over other significant issues which have been covered in the subcommittee reports - save two, because they are particularly significant.

The saga of the Pudding Shop and its flagrant disregard of the Local Government Act, Glebe's status as a conservation area and the recommendations of the Vines report on Glebe Point Road has been well chronicled in the Bulletin. Even in this case, where the property owners were caught red handed, the Land and Environment Court felt itself unable to do anything to force the restoration of this most significant shop front. It seems that the Land and Environment Court, in this area at least, has joined the Heritage Council in the realms of paper tigers. More than ever it is up to us to nip these outrages in the bud and, if necessary, force the Council and its officers to do their duty before it is too late.

The other significant issue is Glebe markets. Again, this saga has been well documented in the Bulletin and in the popular press. However, I am happy to report that now that the Port Jackson Cluster Director, Lyndsay Connors, is taking an active role in the debate, Glebe Public School is at last facing up to its responsibilities in the same way as any other Glebe citizen. The fight may not yet be over, but at least we can now look forward to a development application and the participation of the school in the appropriate planning processes.

Two of our own activities for the year deserve mention. The house inspection on 18 October 1992 made only \$636.00. But this was not for any lack of hard work and enthusiasm on the part of

Andrew Wood and his dedicated committee. We all shared their disappointment, but there is nothing much one can do about Sydney's weather in Spring - and this was not helped by the Hunters Hill Trust running a house inspection on the same day. We deserve better luck in 1994.

Our other significant activity was the public meeting on 7 August 1993. This attracted a considerable number of residents, many of whom have now applied for membership of the Society. The issues discussed did a lot to redress the unjustified perception that the Society's interests do not extend beyond Glebe Point and the waterfront.

That brings me to the end of my report, as well as to the end of my term as President. Thank you to all the members of the management committee and to the tireless convenors of the subcommittees. In particular, thank you and farewell to those committee members who have not sought re-election or reappointment today - Jenny Pockley, our new members' contact, and Jeremy Long, our Bulletin editor. I am happy to announce that Jan MacIndoe has agreed to take over from Jeremy as Bulletin editor.

And thank you to all of you in the Society who have, in your own ways, contributed to another successful year - 24 and counting!

Ted McKeown

Planning Report

The planning sub-committee has monitored and reviewed all matters concerned with planning in Glebe by both the Leichhardt Council and the State Government. This has involved all development and building proposals as well as strategic planning and the control of unauthorised uses. For a range of issues the Society has lobbied the Council to ensure that planning in Glebe is mindful of the heritage of the suburb as well as the amenity of its residents.

The majority of developments in Glebe over the past year have been relatively minor, ranging from house renovations to small scale residential development, with the major issue being the approval for the renovation and additions to University Hall.

Leichhardt Council is currently preparing a comprehensive plan for the municipality and papers are being prepared by the Council on all major issues. The issue paper on public open space and planning for open space has been released and a submission was made on behalf of the society. Other issue papers (on residential development, working in Leichhardt, transportation, and heritage etc) are expected to be released towards the end of the year.

The planning sub-committee has also been concerned to stop unauthorised uses within Glebe, particularly where such uses affect the amenity of local residents and where the suburb's heritage is destroyed. The use of 29 Cook Street for an auction rooms and the use of the Glebe Primary School at weekends for a market were two particular cases where the impact of the uses was considered an unfair impost on residents living in the locality.

An application is to be submitted to the council shortly for the markets at the school now that a local environmental plan has been made making the markets a permissible use within school grounds. 29 Cook Street (which was rezoned to permit residential development in 1992) is proposed to be redeveloped for 24 residential units, with Greenpeace occupying the factory on the site in the short term.

The destruction of the original facade of the Pudding Shop and its replacement with an unsympathetic facade without authorisation was also of great concern to members. The matter was ultimately taken to the Land and Environment Court where unfortunately it was determined that while the work undertaken was unauthorised the owners would not be required to reinstate the facade.

The major responsibilities for the planning sub-committee for the forthcoming year will be participation in the planning process for the new comprehensive plan for Leichhardt and the continued monitoring of development in Glebe to ensure that new development respects the heritage of Glebe maintaining and where possible improving residential amenity. Of particular and continuing concern will be the foreshore sites including Harbour Lighterage and 465 Glebe Point Road as well as Bellevue for which an appropriate use will have to be found.

Linda Nash

Planning Convenor

Kingsford Smith Airport & Glebe

You may have been following the issue involving Marrickville Council and the rezoning of a former industrial site to permit a big increase in residential use, reported in local newspapers. The site is in an area of 25 ANEF (aircraft noise exposure forecast.) A NSW Ministerial directive was discovered in section 117 of the E.P.& A. Act that disallows rezoning to residential use of increases in residential use. Residents worked hard to bring pressure on that council to react appropriately to the D.A. which was subsequently rejected.

Badgerys Creek International Airport conference will take place on 10th and 11th November, in Penrith - see details below. Registration will cost \$400.

Air quality in Sydney is being addressed by local government. The Local Government Air Quality Project is an initiative coming from the Regional Organisations of Councils covering most, if not all, of the Sydney plain. At the time of writing it is hoped that Dr Fred Bell will be able to attend a meeting of community organisations, on 19th October, called by the Regional Organisations of Councils to develop a briefing paper on the initiative. Dr Bell has worked on air quality issues stemming from Kingsford Smith Airport and the third runway.

Alison McKeown

Community Effort

THE campaign to fast-track Badgerys Creek International Airport comes from the grassroots - the community of Greater Western Sydney. Businesses and individuals from the region are volunteering to help by offering sponsorship funds, office equipment for its office in Penrith, and much-needed manpower to help make the conference a success.

This is very much a Greater Western Sydney effort. In addition to staging the conference, it is vital to plan ahead for the on-going work that will be required to achieve the objective of establishing an international airport at Badgerys Creek.

This work will include the preparation of feasibility and marketing plans, the drawing up of a business plan, discussions with potential investors, and the establishment of a full-time administrative support infrastructure to co-ordinate all these activities.

Such an effort will involve significant co-ordination and resources. It is this degree of support that the current BCIA operation is canvassing for. A registration form for the conference is enclosed, and if you'd like to offer sponsorship in any form, please contact the BCIA Conference Office at: Suite 5, Surveyor House Penrith, NSW 2750 Tel: 008-06 1996 or (047) 32 1334. Fax: (047) 32 1996.



1993 Bays and Foreshores Report

As I read over my earlier reports, I find a depressing "sameness" about them. No real progress is being made. We can't relax and enjoy our wonderful area. This year is no different:

things are being proposed that we don't want;

old arguments that we thought we'd won are resurrected;

developments going ahead against our wishes are realising our worst fears;

good developments are making no progress.....

To explain

Things being proposed... While no formal Development Application has been sighted, it is feared that proposals for the Harbour Lighterage site will include use of the wharf even for a residential development---such a development would be disasterous for Glebe Rowing Club.

Old arguments... Towards the end of 1991, the MSB proposed a marina for the northern shore of Rozelle Bay. Leichhardt Council called a public meeting to discuss the issue. The proposal was rejected. Essentially the same proposal is again being aired. Should we have to go through it all again?

Developments going ahead... Last year I wrote, "The ludicrously high Glebe Island Bridge is set to go ahead for the sake of one ship in the immediate future and none in the longer run. No doubt

other uses will be found for the bays to justify the height of the bridge." The marina proposal fits this prediction as does the other old chestnut that keeps returning to haunt us---that Blackwattle Bay will be used to moor charter/cruise vessels. But the real point to make here is about the bridge development itself. Does everyone agree that the obscenity is even worse than our worst fears?

Good developments.... The most obvious potentially good development is Bicentennial Park Stage 2, but despite the land being in Council's hands for over a year, the site remains unusable.

Quickies

Congratulations to the Cook Street locals for their sterling efforts regarding the inappropriate use of 29 Cook Street.

Hardies site (end of Glebe Point Road) is undergoing such a metamorphosis (without DAS, I gather) that I fear for our long term policy of linking our two great parks via the foreshore.

The rezoning of 29 Cook and Fletcher's gives us the potential for foreshore improvements in the mid (five year?) term.

The Sydney Maritime Museum already partially sited on Rozelle Bay (and at Darling Harbour where their future appears limited) may be interested in expanding their Rozelle Bay operations.

John Buckingham

Bays & Foreshores Convenor

Report from Council

For most of its history as a part of other Municipalities, The Glebe has either been neglected, or exploited for its resources and attractions with little return. Unfortunately, the present Council, despite some smooth talking, has continued the same pattern. Within the first 18 months of being elected, the Council has expropriated all Glebe's open space contributions to buy a derelict factory in Annandale, and one third of Glebe's parking contributions to buy another in Rozelle. Both of these purchases have become running sores for Council. Attempts to lease the Annandale site were unsuccessful for six months, and the only business to show an interest has paid little of the rent due. And to add insult to injury, the Rozelle site is empty and idle and deteriorating rapidly.

This year the Mayor and his supporters mounted a campaign to force Glebe to accept a huge Sunday market at Glebe Public School, which had been causing severe hardship to nearby residents and businesses for more than twelve months; and when the majority of Councillors and the Department of School Education refused this outrage, they attempted to foist the markets onto the area around Harold Park.

In resisting and publicising this exploitation the support of The Glebe Society has been crucial, but defence is only part of The Society's role. The Society is the conscience of the community. There are more representatives from The Glebe Society on Council's committees than from any other organisation. Sometimes the Council has adopted The Society's policies, and sometimes The Society leads the community by running its own campaigns.

However, it is important for members to realise how fragile are the defences that hold back disaster. University Hall and Reussdale are there to remind us of that fragility. Every decision of the Land and Environment Court for the last two years concerning Glebe has been unfavourable. Council's Open Space Strategy is ludicrously unfair to Glebe - only my last-minute intervention ensured Glebe sites were included for acquisition. I should also take credit for ensuring the Glebe-Annandale Development Team is the only one headed by a person trained in either planning or heritage issues.

Council's situation could easily deteriorate without further warning. Glebe's biggest problem, through traffic, can only be alleviated by a concerted campaign to take advantage of the opening of the new Glebe Island Bridge in 1996. We may be able to enlist the help of Annandale residents for part of this campaign, but it is mainly up to us.

Cr Neil Macindoe



TREES IN GLEBE POINT ROAD

Following the public meeting in August we wrote to Leichhardt Council about the possibility of bundling cables in Glebe Point Road to reduce the need for tree lopping and to improve the appearance of the road. Council has advised that they have already made an approach to Sydney Electricity, which is presently preparing a scheme for consideration. Despite subsidies which the Authority offers, the total cost is likely to be significant. Council will advise us further when they have more information and when they have assessed costs in relation to Council's budget as a whole.

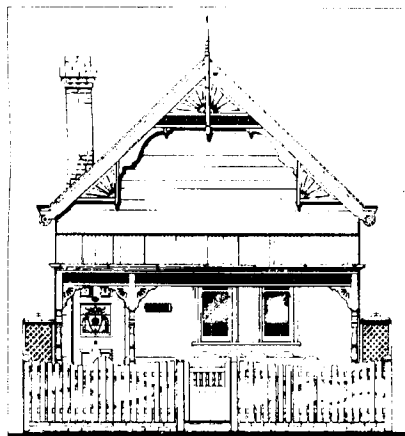
We also forwarded on to Council the petition about plans for the trees in Glebe Point Road, asking that proposals be put on display for public comment. The Council meeting of 7 September recommended that the petition be referred to the Chief Engineer for investigation. Council will advise when the matter comes before Council again.



Dining Out

At our last very enjoyable night out at The Glebe Terrace, it was decided that the next dining-out night should be at the Glebe Rowing Club at 6:30 pm on Wednesday the 20th of October.

According to Max Solling's recently published history of the club, *The Boatshed on Blackwattle Bay*, (available at Gleebooks for \$30) the club was founded in 1879 and has had a licensed dining room since 1963. The Glebe Society has held numerous functions there, but not usually in the evening, when the view of the city lights over the water can be quite spectacular. A table for eight has already been booked, but if you want to be sure of a place please ring Ian Edwards on 817 4329 as soon as possible.



Seven Experts to Participate in Old House Information Day

Seven experts on restoration will participate in an old house information day arranged by heritage writer Ian Evans.

The emphasis will be on providing economical solutions to the most important restoration problems. Subjects to be covered include rising damp, fences and traditional colour schemes, plaster conservation, decorative glass, traditional surface finishes, decorative plaster, ceramic tiles, gardens and garden design.

The event will take place at Ramsay Hall, St David's Uniting Church, 48 - 51 Dalhousie Street, Haberfield, on Sunday 7 November, commencing at 9:15 am and going through to 5:00 pm. Admission of \$45 includes lunch and morning and afternoon tea. For information and bookings ring 747 6751.

Glebe High School

7

The Parents & Citizens Association has organised a raffle to raise funds for the school. First prize offers the lucky winner two tickets to *Phantom of the Opera*, valued at \$150, and a fully autographed poster as a permanent reminder of a wonderful show. Second and third prizes offer to both prize-winners dinner, coffee and cake for two at *Le Chocoreve* in Glebe Point Road, and a double pass to the Valhalla Cinema. Fourth prize gives the winner a \$25 voucher at Riteway Supermarket, \$25 voucher at Musumeci Seafoods and \$20 voucher at Glenmore Meats. Fifth prize winner receives a liquor hamper, and sixth prize winner will have two introductory sailing lessons (adult or child) at Dobroyd Aquatic Club. The raffle will be drawn on 14 December, 1993.

If you would like to assist the school by purchasing tickets please ring Alison McKeown: 660 3917. Tickets are \$2 each. Booklets of ten tickets are available at \$20.

Monday Group

Last meeting for this year will be November 15. Meet for lunch at the British Lion, 182 St John's Rd, Glebe. There is no set menu, so each one will choose and pay for her own lunch.

Glebe Music Festival 1993

Three concerts will be held in early November at Margaretta Cottage and St Scholastica's Convent Chapel, and a donation will be made to the Children's Hospital from the proceeds.

Flute and keyboard recital, Sat 6 Nov, 8pm

Margaretta Cottage, 6 Leichhardt St, Glebe Pt

Tickets \$20 (concession \$10) includes Coffee and cake.

Musical Soiree, Sat 13 Nov, 8pm

Margaretta Cottage

Tickets \$40 (concession \$20) includes supper and drinks

**Innominata Choir and David McIntosh
Sunday 14 Nov, 5pm, St Scholastica's
Convent Chapel, 2 Avenue Rd, Glebe
Point**

Tickets at the door \$5 (concession \$2)

Tickets for the Margaretta Cottage concerts available from David McIntosh, 18A Cook St, Glebe Point,
Ph: 660 6780

For Your Diary

Wednesday 20 October - 6:30 pm - Dining Out -
Glebe Rowing Club, Ferry Road

Saturday 6 November - 8:00 pm - Flute and
keyboard recital at Margaretta Cottage

Wednesday 10 November - 7:30 pm - Committee
Meeting, Lyndhurst, Darghan Street. Also deadline
for Bulletin contributions.

Saturday 13 November - 8:00 pm - Musical Soiree
at Margaretta Cottage

Sunday 14 November - 5:00 pm - Innominata
Choir and David McIntosh at St Scholastica's
Convent Chapel

Monday 15 November - 12 noon - Last Monday
Group meeting for 1993. Meet at the British Lion,
182 St Johns Road.

THE GLEBE SOCIETY inc. Management Committee

President

Vacant

Senior Vice President

Marianne von Knobelsdorff 692 0916 (H)

Junior Vice President

Cynthia Jones 660 2451 (H)
692 3898 (W)

Immediate Past President

Ted McKeown 660 3917 (H)
391 3000 (W)

Secretary

Jeanette Knox 660 7781 (H)

Treasurer

Mavis McCarthy 660 5119 (H)

Committee

Edwina Doe 660 7066 (H)

Peter Strickland 660 7624 (H)

Christine Whittemore 660 7969 (H)

Contacts

Bulletin Editor Jan Macindoe 660 0208

Membership List Edwina Doe 660 7066

Publications Patricia Jackson 660 8849

Monday Group Sally Nelson 660 6138

Archivist Lyn Milton 660 7930

Convenors of Sub-committees

All convenors are ex-officio members of the
Management Committee

Aircraft

Alison McKeown 660 3917

Bays & Foreshores

John Buckingham 660 7780

Children & Glebe

Louise Schweikert 660 7205

Diggers Memorial

Bill Nelson 660 6138

Environment

Fiona Campbell 891 8284 (W)

Harold Park

Gideon Rutherford 692 0239

Light Rail

Andrew Wood 660 2194

Planning

Linda Nash 818 3095

Traffic

Jeanette Knox 660 7781

Wentworth Park

Christine Stewart 660 8324

Membership of The Glebe Society

Costs:

Ordinary \$25; additional household members \$5 each;

Student/Pensioner \$10;

Institution \$30

Write to P.O. Box 100, Glebe 2037, or ring Jeanette Knox on 660 7781.